

# HIGH SYSTEM RESERVOIR

AUGUST 2020

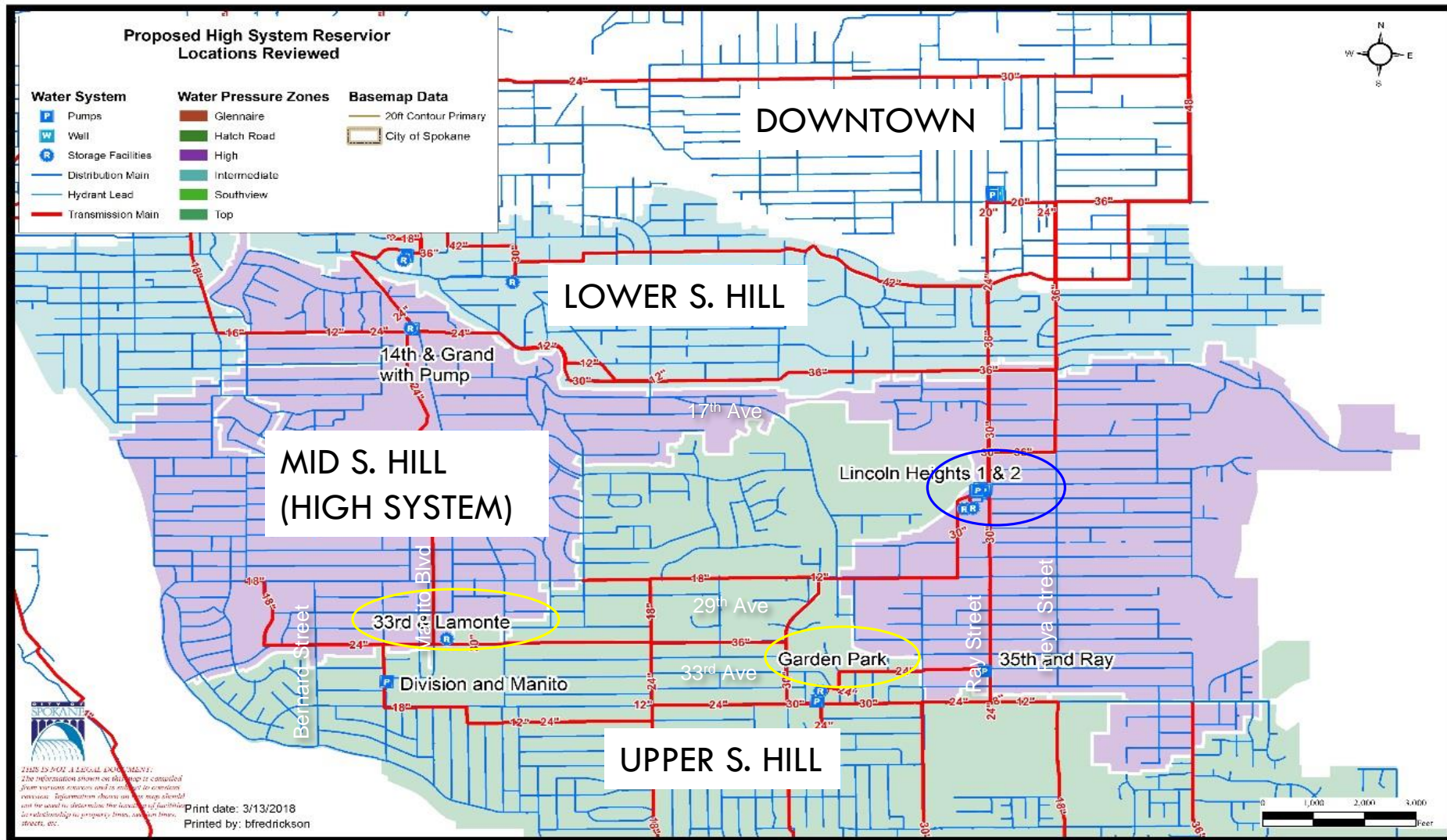


# PROJECT OBJECTIVES

A NEW RESERVOIR IS NEEDED IN THE HIGH SYSTEM PRESSURE ZONE:

- TO INCREASE SYSTEM RELIABILITY – FIRE FLOW & PEAK DEMAND SUPPLY DURING THE SUMMER
- TO MEET DEPARTMENT OF HEALTH STANDARDS.
- TO IMPROVE THE WATER SYSTEM OPERATIONS IN HIGH PRESSURE ZONE AND ABOVE.

# HIGH SYSTEM PRESSURE ZONE





# RESERVOIRS CURRENTLY SERVING THE HIGH SYSTEM PRESSURE ZONE

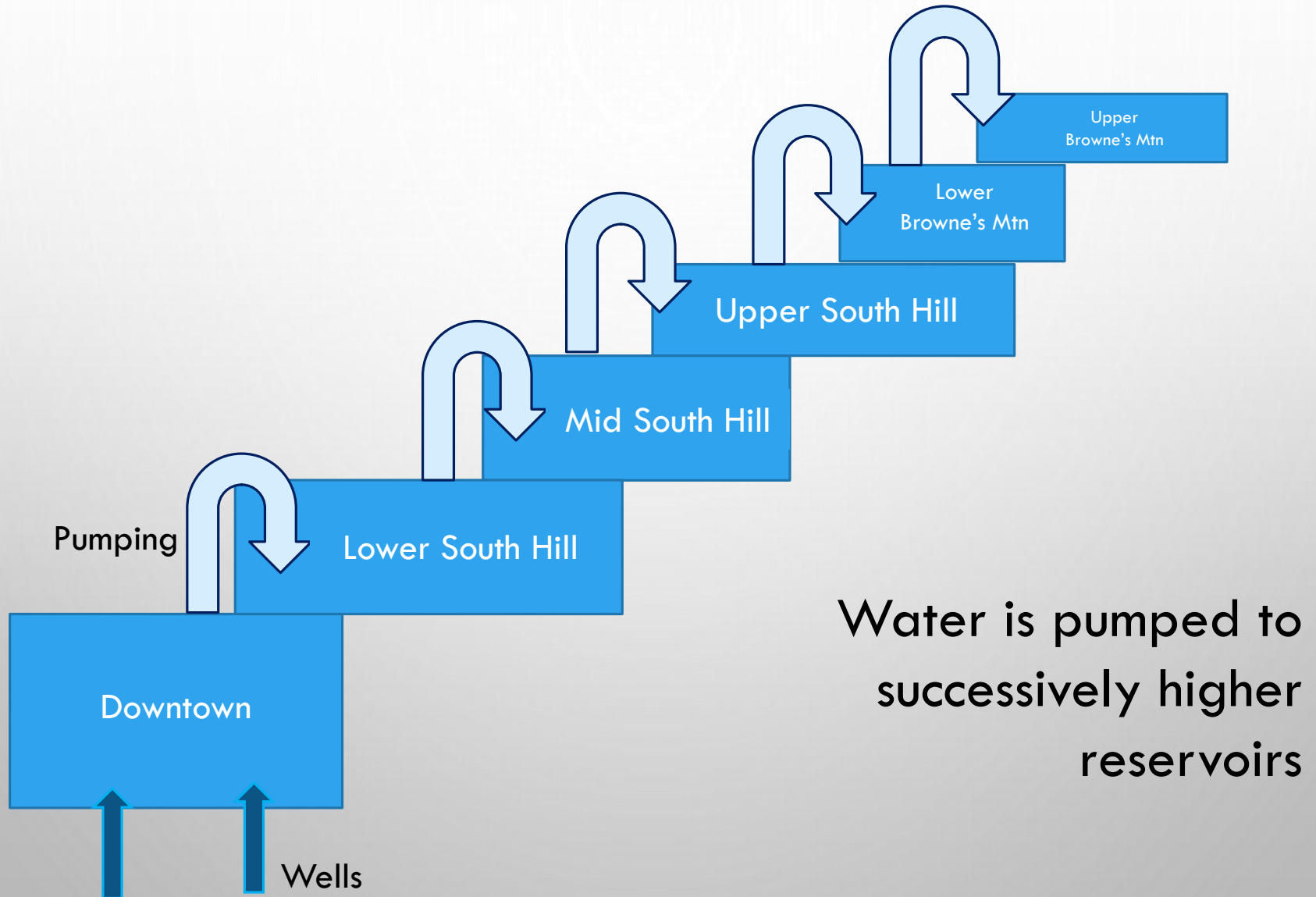


33<sup>rd</sup> & Lamonte  
125 feet tall near Sacajawea

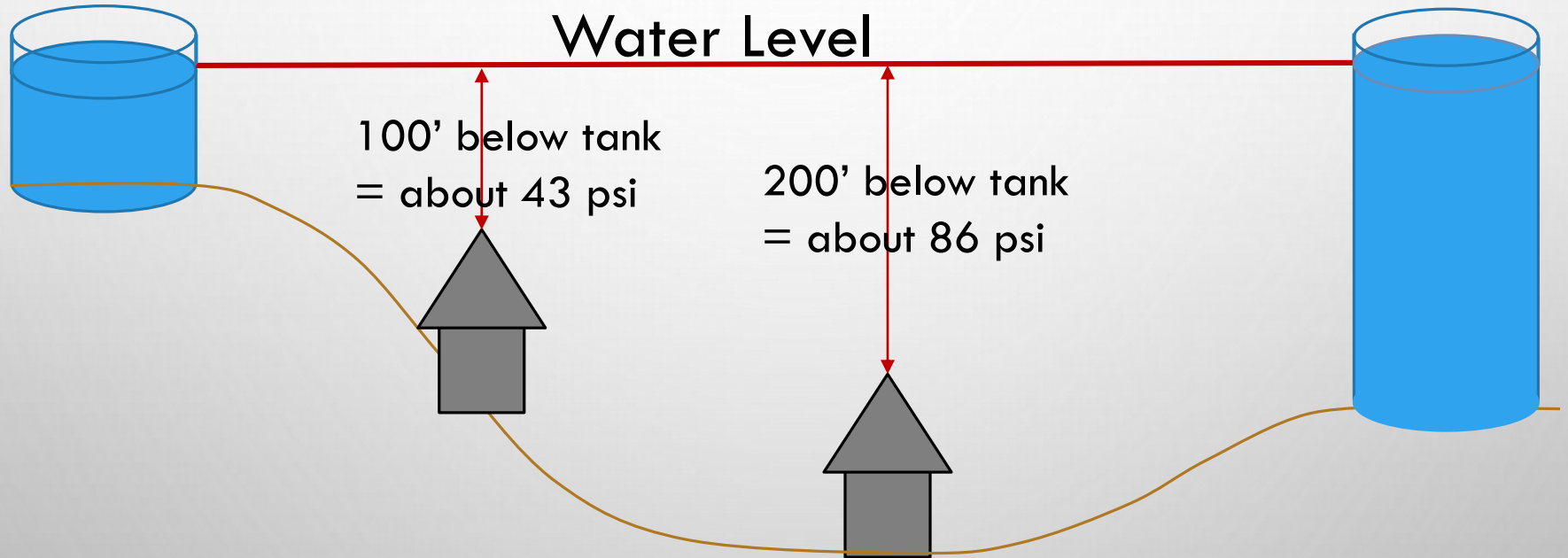


Garden Park at 37<sup>th</sup> Avenue near Stone Street  
75 feet tall

# WATER SYSTEM BASICS



# RESERVOIR ELEVATIONS AND PRESSURE



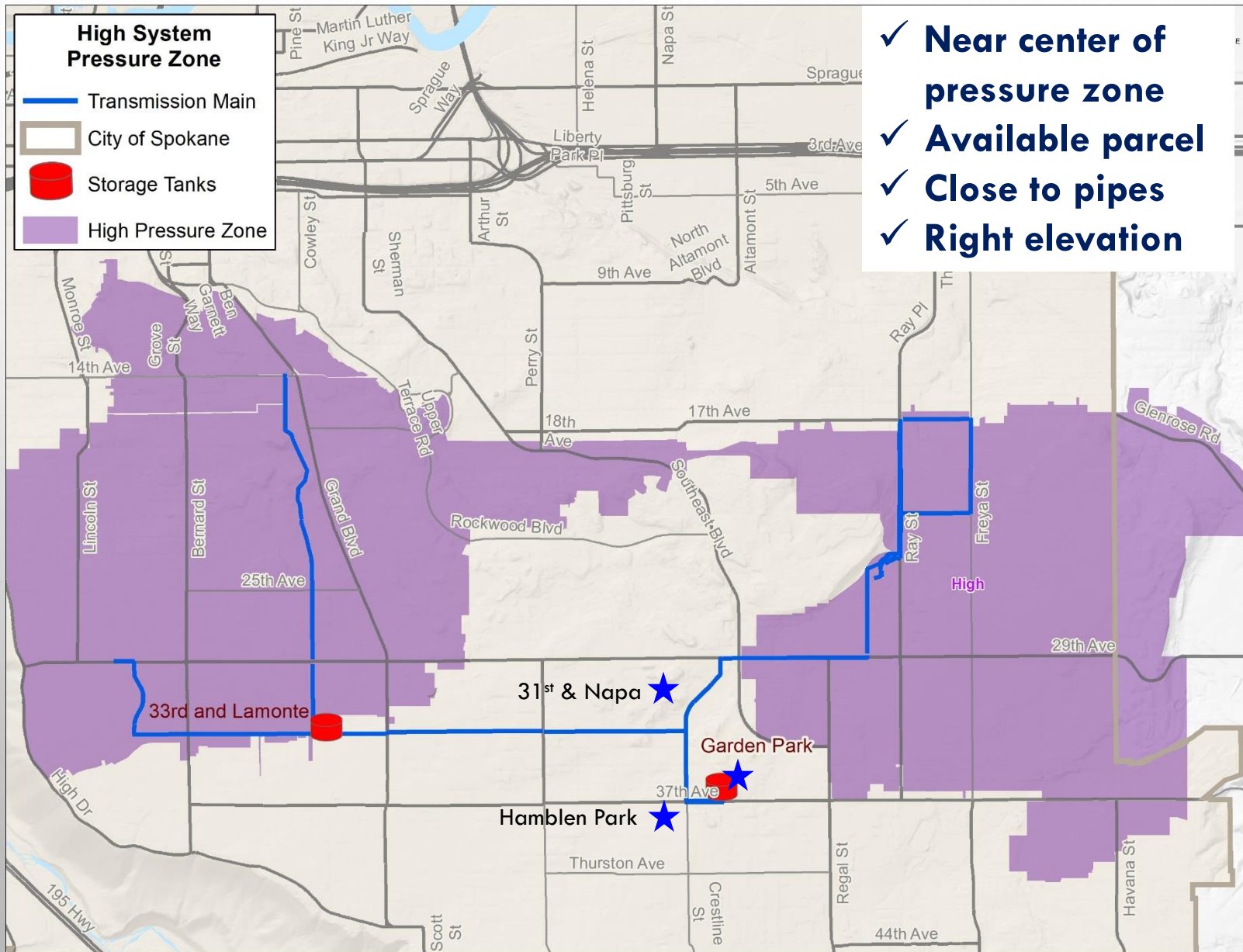
Homes and businesses must be  
between approx. 100' and 200'  
below tank water level

# LOCATION SELECTION CRITERIA

- AVAILABLE PROPERTY (NOT MUCH VACANT LAND ON SOUTH HILL) AND IDEALLY PUBLICLY OWNED
- CLOSE TO TRANSMISSION MAINS – WITHIN 5 OR 6 BLOCKS
- THE WATER LEVEL IN THE PROPOSED RESERVOIR MUST MATCH ELEVATION OF THE OTHER RESERVOIRS
- NEAR THE CENTER OF THE PRESSURE ZONE



# TRANSMISSION MAINS





# GARDEN PARK

320'



CONSTRUCTION AREA NEEDED:  
APPROX 225' X 225' (ROUGHLY FLAT)

37<sup>TH</sup> AVE.



# 31<sup>ST</sup> & NAPA

SAFEWAY

29<sup>TH</sup> AVE.

TOUCHMARK  
RETIREMENT  
HOME

SAFEWAY

POTENTIAL  
RESERVOIR SITE



SOUTHEAST BLVD



# 31<sup>ST</sup> & NAPA

TOUCHMARK

CITY  
OWNED  
LOT

140'

170'

CONSTRUCTION AREA NEEDED:  
APPROX 225' X 225' (ROUGHLY FLAT)





# HAMBLÉN PARK

37<sup>TH</sup> AVE.

625'

625'

Hamblen  
Park

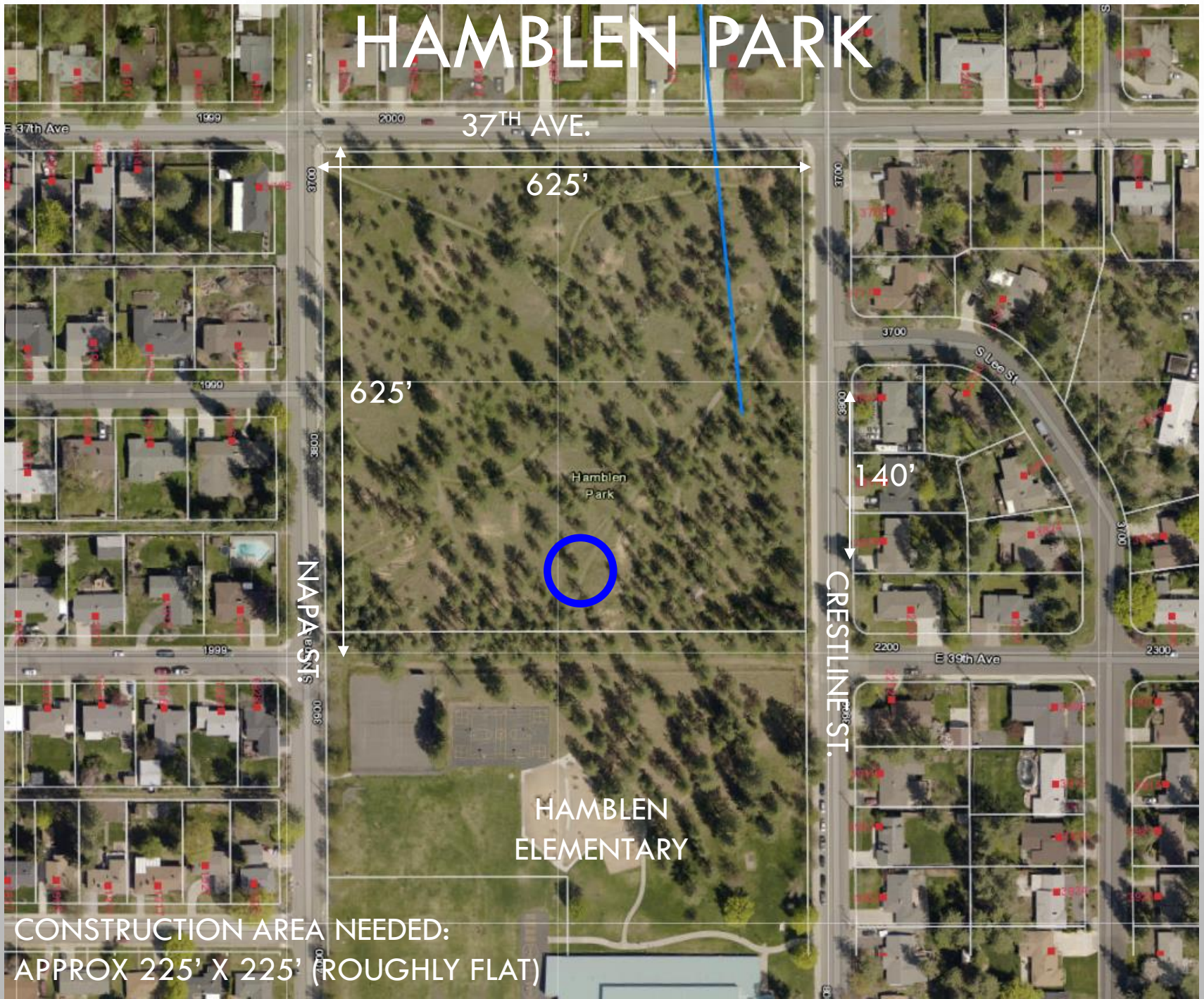
140'

CRESTLINE ST.

NAPA ST.

HAMBLÉN  
ELEMENTARY

CONSTRUCTION AREA NEEDED:  
APPROX 225' X 225' (ROUGHLY FLAT)

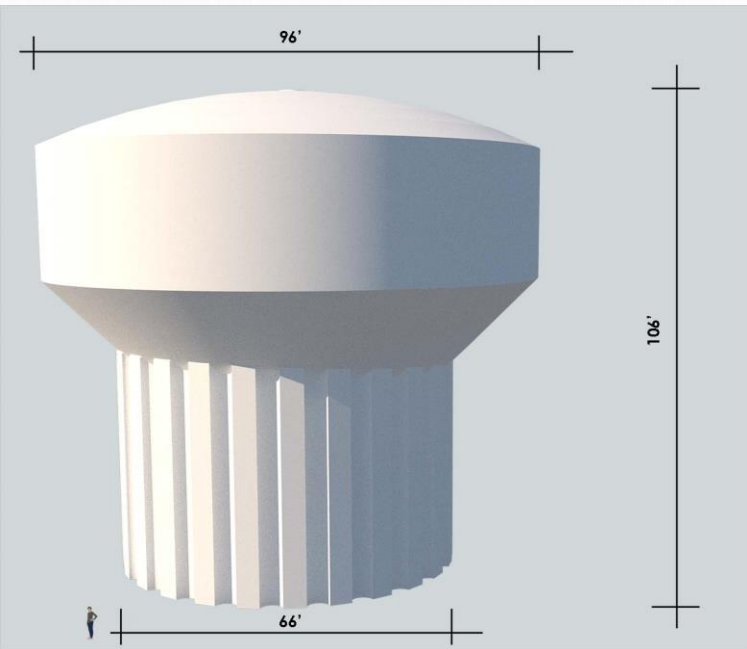




# RESERVOIR DIMENSIONS

- APPROX. 100' TALL (AT HAMBLÉN PARK – VARIES IN OTHER LOCATIONS)
- APPROX. 2 MILLION GALLON CAPACITY
- 50'-60' DIAMETER AT ITS BASE
- 100' TANK DIAMETER

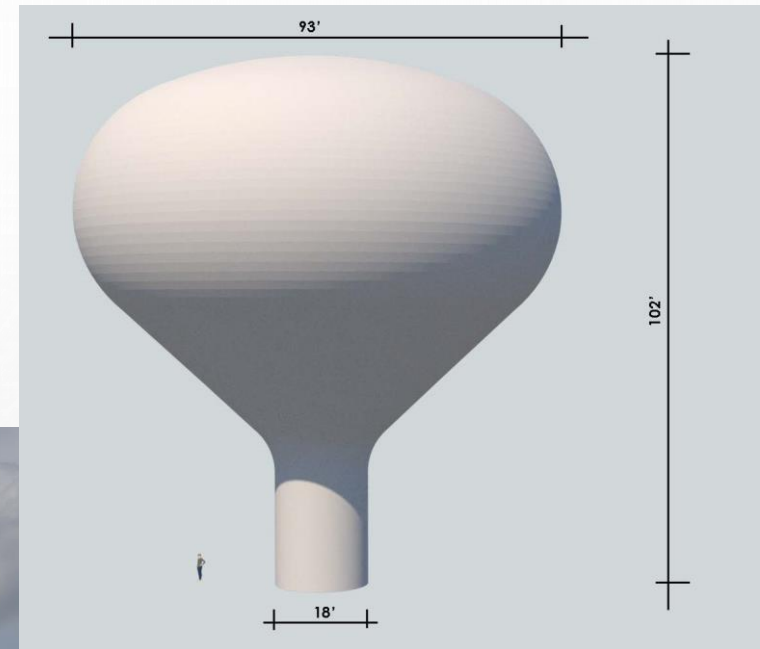
# AVAILABLE RESERVOIR TYPES



Hydropillar



Standpipe



Water spheroid



# HAMBLÉN PARK

37<sup>TH</sup> AVE.

625'

Hamblen  
Park

200'

200'

140'

NAPA ST.

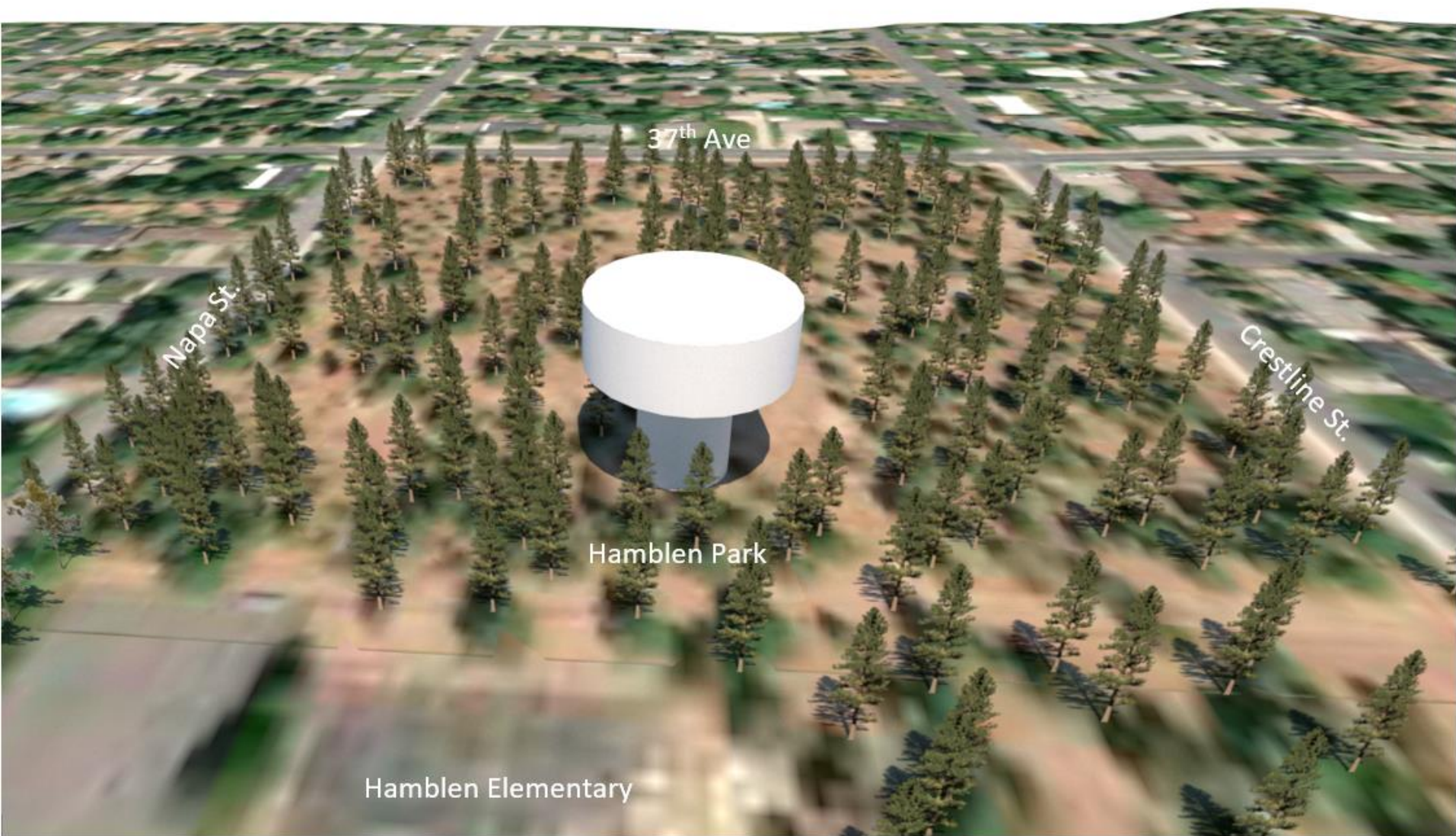
CRESTLINE ST.

HAMBLÉN  
ELEMENTARY

CONSTRUCTION AREA NEEDED:  
APPROX 225' X 225' (ROUGHLY FLAT)







37<sup>th</sup> Ave

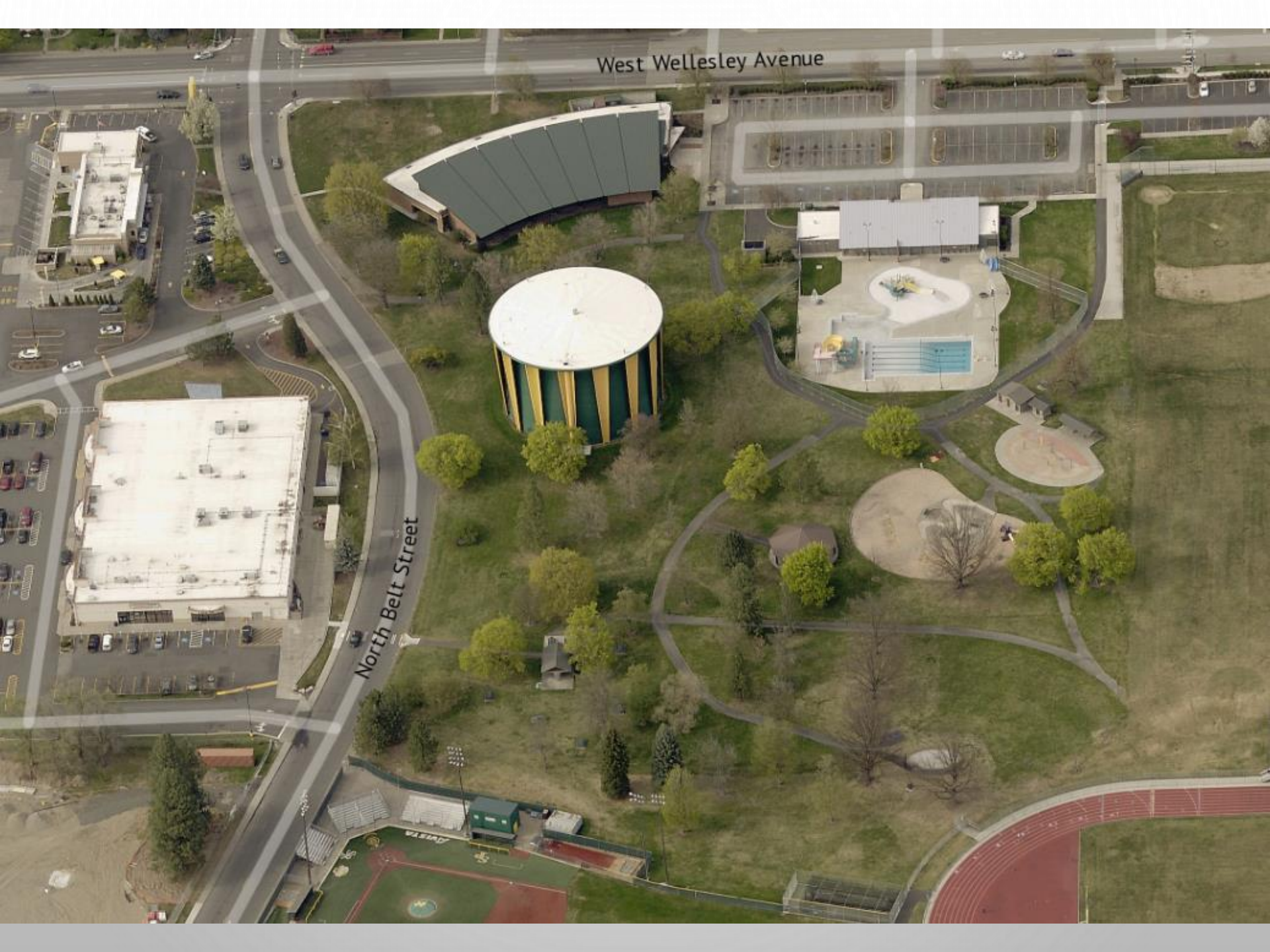
Napa St.

Crestline St.

Hamblen Park

Hamblen Elementary





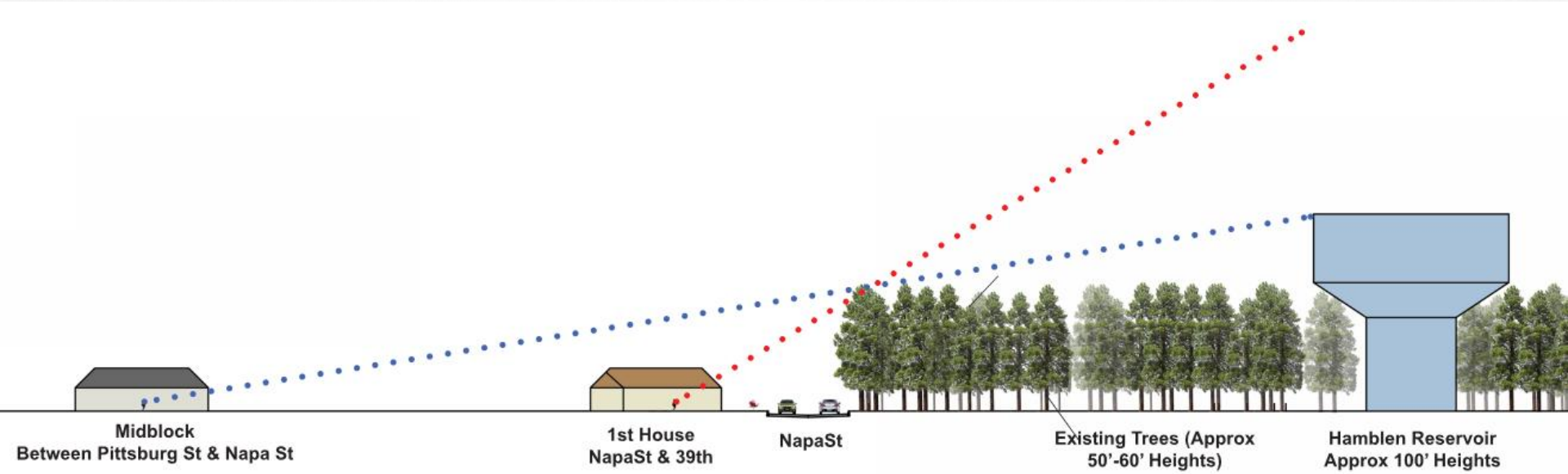
West Wellesley Avenue

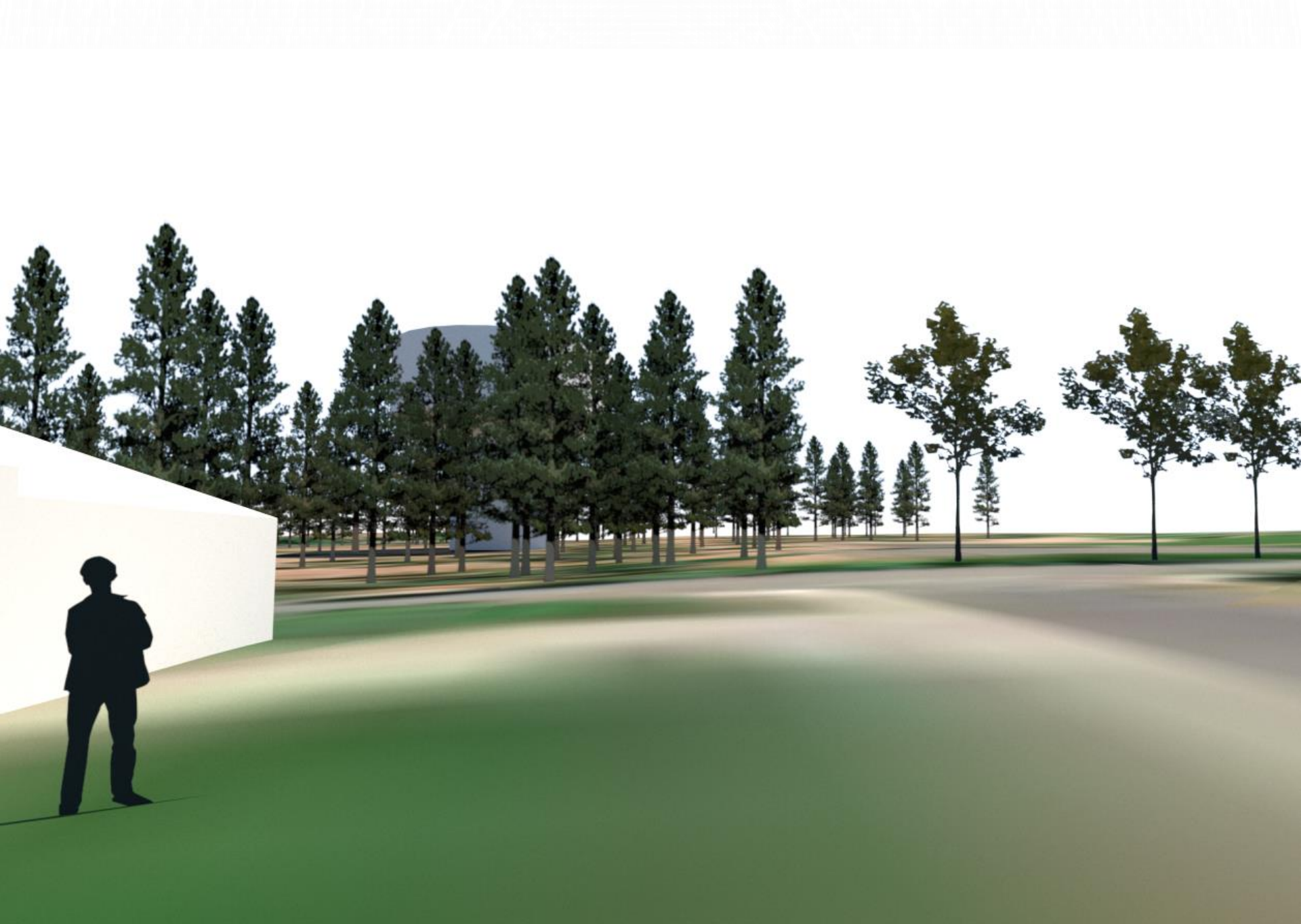
North Belt Street



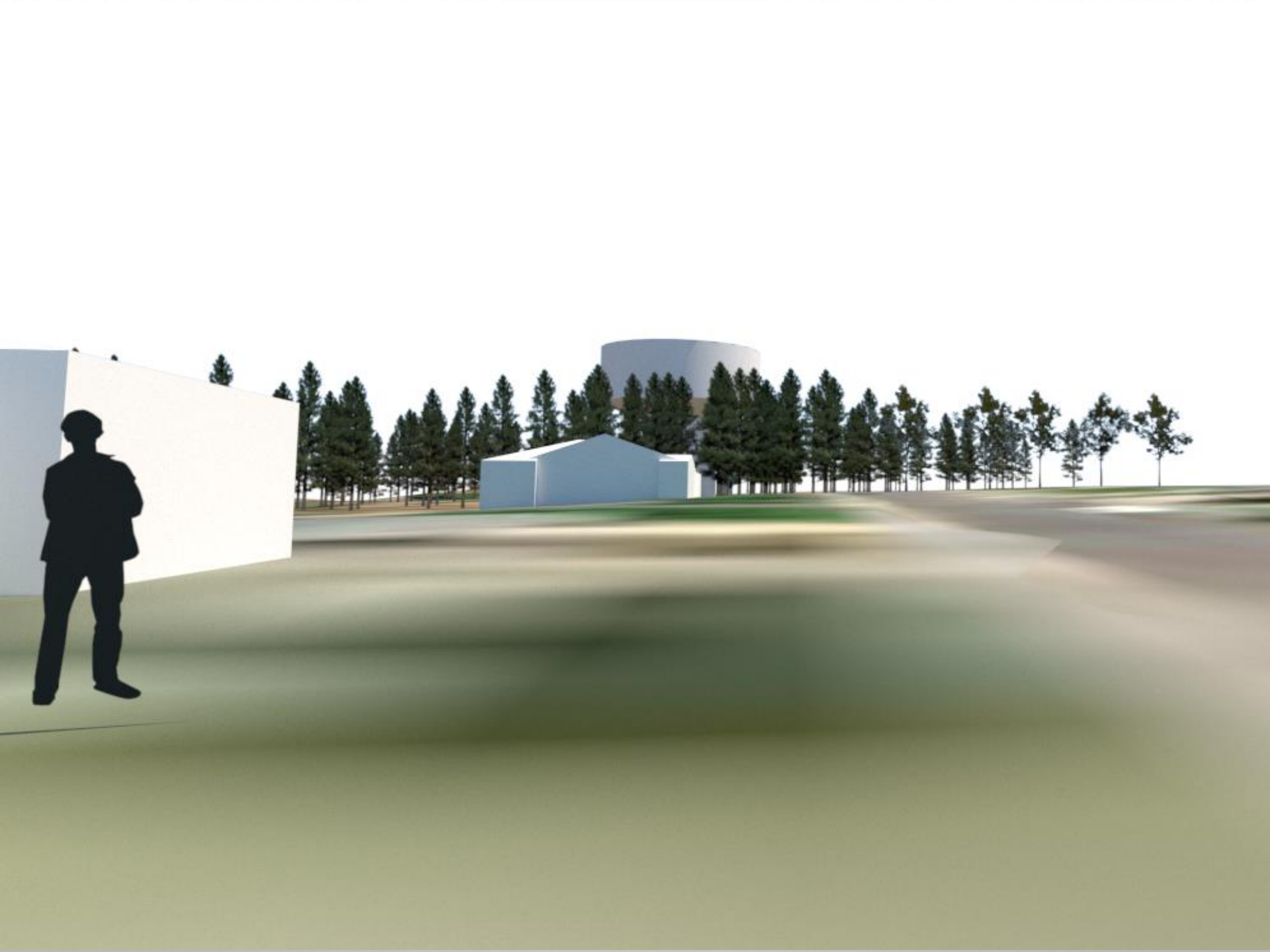












# MITIGATION MEASURES

- START WITH HAMBLÉN PARK, POSSIBLY INCLUDE OTHER PARKS
- THREE PARKS IN SOUTHGATE – HAMBLÉN, SOUTH COMPLEX, BEN BURR
- SOUTHGATE NEIGHBORHOOD PLAN – PARKS AND OPEN SPACE ELEMENT (2010)



## Hamblen Park - Concept

### Existing

Shelter  
Unimproved trail  
network

### Proposed

Improvements to trail network  
Signage for trail network  
Park signage  
Entrance landscaping  
for transition from  
urban area to  
conservation land  
Bike racks along bike route  
Restroom facilities

# PROJECT SCHEDULE & NEXT STEPS

- HOLD ANOTHER COMMUNITY MEETING  
ADVERTISED TO ALL RESIDENTS WITHIN A  
SEVERAL BLOCK RADIUS (LATE AUGUST)
- PERMITTING (FALL 2020)
- PROJECT DESIGN (FALL/WINTER 2020)
- CONSTRUCTION (2021-2022)



**QUESTIONS?**