

HATCH BRIDGE DECK REPLACEMENT

AUGUST 2020



HATCH BRIDGE

HWY 195

HATCH RD BRIDGE

HANGMAN
VALLEY RD



PROJECT OBJECTIVES

PRIMARY: REPLACE HATCH BRIDGE DECK

SECONDARY: ADDRESS CONGESTION AT HATCH
RD/HWY 195 INTERSECTION



South Hatch Road

Hatch Road

PRIMARY OBJECTIVE OVERVIEW

- BRIDGE ARCHES, ABUTMENTS AND STEEL DECK SUPPORT BEAMS REMAIN
- CONTAINMENT SYSTEM WILL BE INSTALLED TO CAPTURE DEBRIS
- ALL WORK IS ABOVE THE ORDINARY HIGH WATER MARK
- FULL BRIDGE CLOSURE FOR APPROX. 4 MONTH
- DETOUR AS SHOWN

SECONDARY OBJECTIVE OVERVIEW

- ADDRESS CONGESTION WITH TURNING LANE



HATCH BRIDGE

HWY 195



HATCH BRIDGE

HWY 195

100'



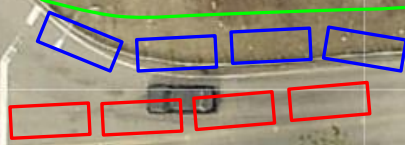
HATCH BRIDGE

HWY 195



HATCH BRIDGE

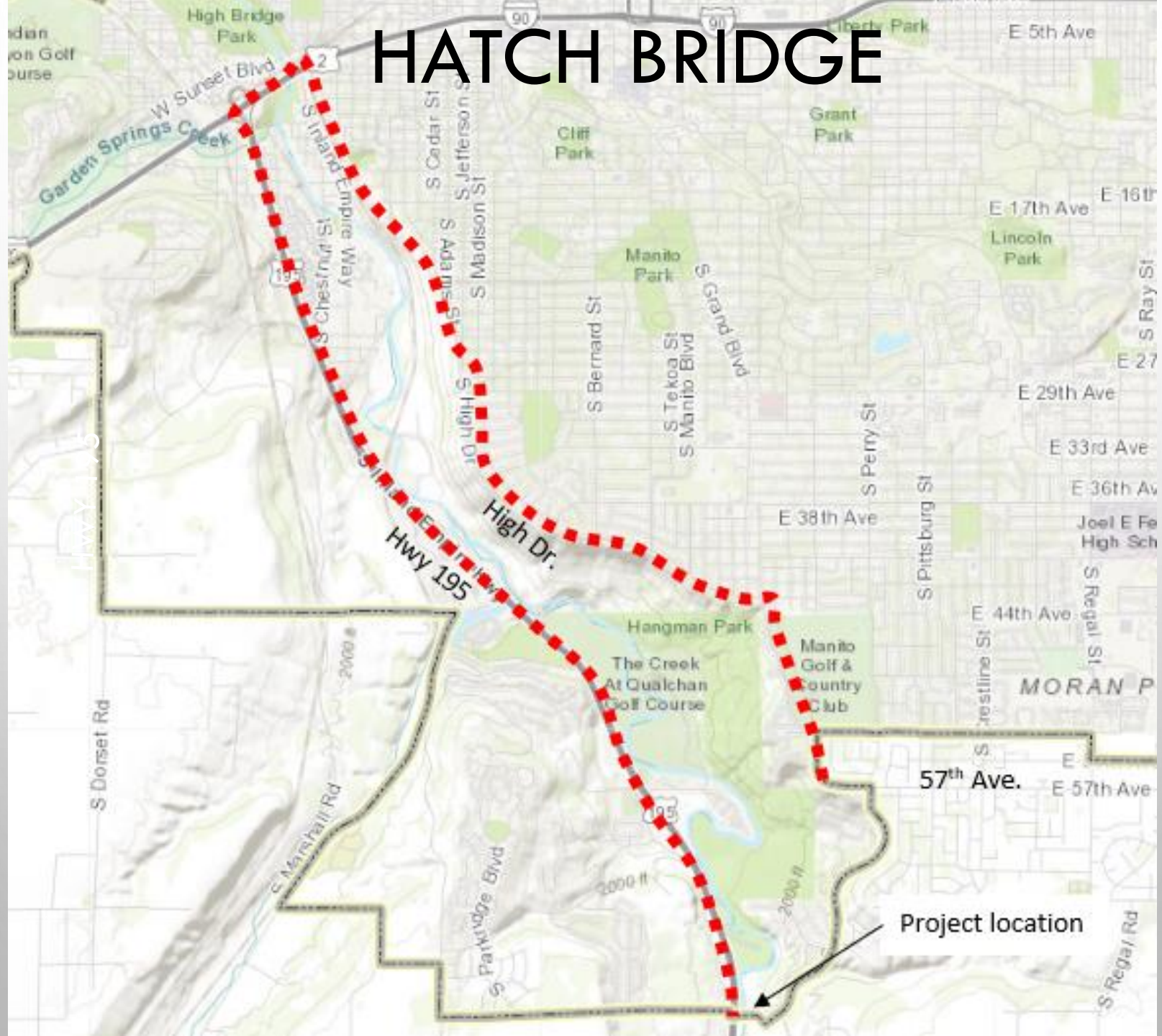
HWY 195



CONSTRUCTION IMPACTS

- FULL BRIDGE CLOSURE FOR APPROX. 4 MONTH
- DETOUR

HATCH BRIDGE



PROJECT SCHEDULE & NEXT STEPS

- PROJECT DESIGN & PERMITTING
(SUMMER/FALL 2020)
- HOLD ANOTHER COMMUNITY MEETING
(WINTER 2020-2021)
- CONSTRUCTION (SPRING-SUMMER 2021)