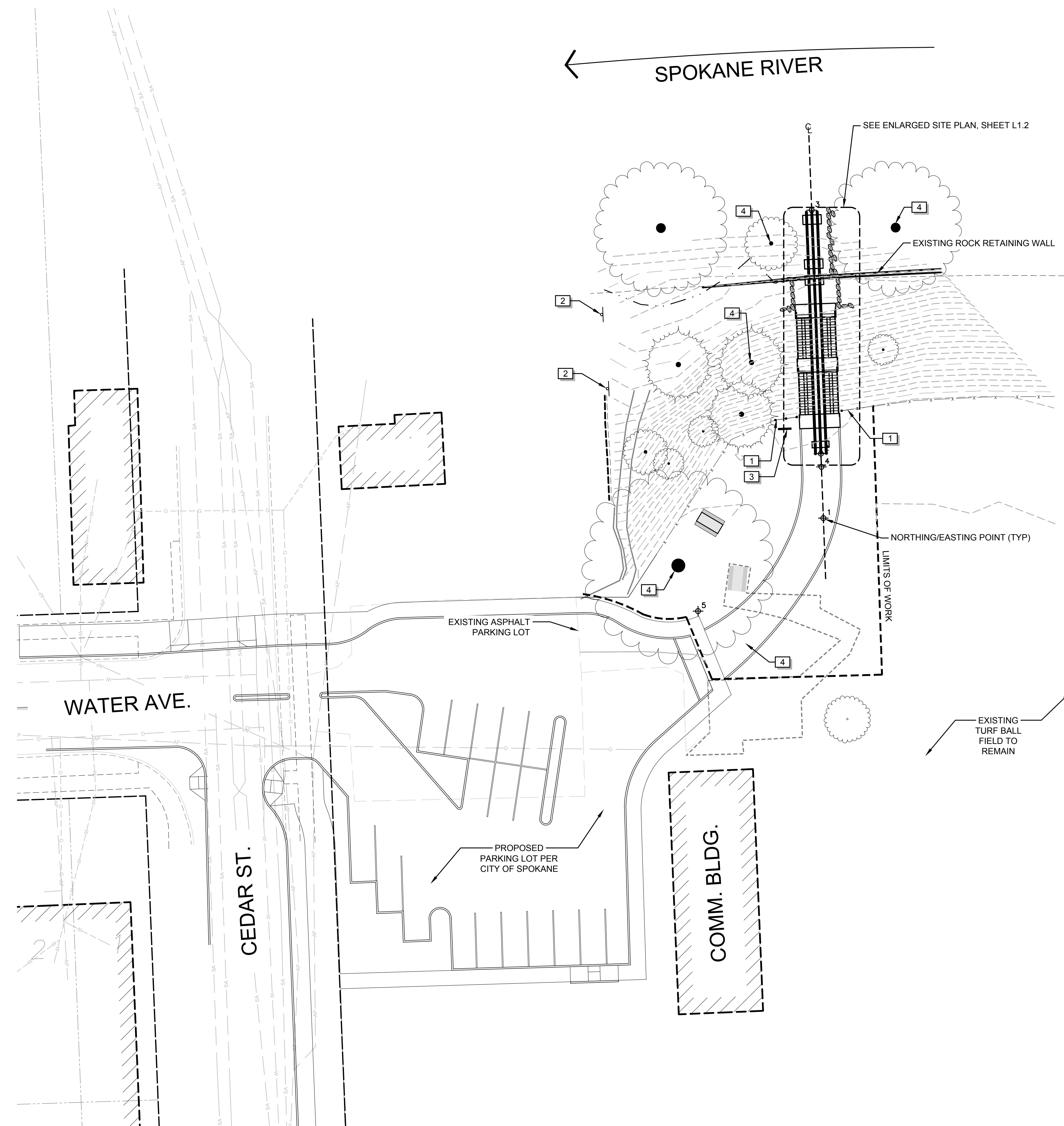


GLOVER FIELD RIVER ACCESS



REFERENCE NOTES SCHEDULE

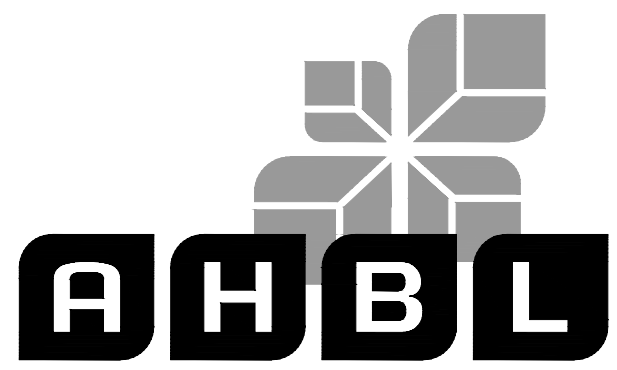
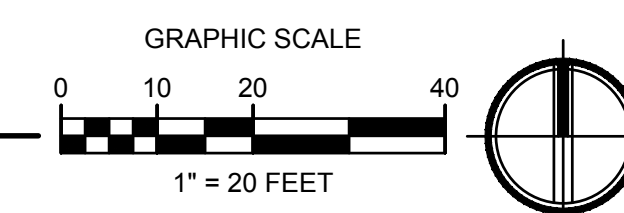
SYMBOL	DESCRIPTION	QTY	DETAIL
1	INSTALL NEW CHAINLINK FENCE	1/L2.2	
2	INSTALL "PRIVATE PROPERTY, KEEP OUT" SIGN		
3	INSTALL RIVER MAP SIGN. SIGN FRAME IS OFCI. MAP SIGN IS CFCI		
4	LIMB UP TREE PER LANDSCAPE ARCHITECT AND CITY URBAN FORESTER'S DIRECTION.		

NORTHING/EASTING POINT SCHEDULE

POINT	DESCRIPTION	NORTHING	EASTING
1	RAIL CENTERLINE	N 259197'-9 1/16"	E 2478294'-5 13/16"
2	RAIL END (SOUTH)	N 259218'-8 7/16"	E 2478293'-8 5/16"
3	RAIL END (NORTH)	N 259297'-9 13/16"	E 2478290'-8 7/16"
4	CENTERLINE INTERSECTION	N 259214'-5"	E 2478293'-10 1/4"
5	TRAILER ACCESS CENTERLINE	N 259167'-6 5/16"	E 2478253'-9 5/16"

NOTES

- ALL IMPROVEMENTS INDICATED IN THE "GLOVER FIELD MASTER PLAN" AREA ARE NOT IN CONTRACT AND SHOWN FOR COORDINATION AND PERMITTING PURPOSES ONLY.
- FOR ENLARGED RAIL SYSTEM PLAN, SEE SHEET L1.2
- FOR SITE DEMOLITION PLAN, SEE L1.1



TACOMA · SEATTLE · SPOKANE · TRI-CITIES
 2215 North 30th Street, Suite 300, Tacoma, WA 98403
 253.383.2422 TEL 253.383.2572 FAX www.ahbl.com WEB

Project Title:

GLOVER FIELD RIVER ACCESS

Client:
 Spokane Conservation District

210 N Havana St, Spokane, WA 99202

Lindsay Chutas
 509.535.7274

Job No.

2170258.40

Issue Set & Date:

PERMIT SET

02/16/18



02.16.2018

NOTICE
 ALLIZATION OF THE DOCUMENT SHALL INCLUDE THE PROFESSIONAL SEAL AND SIGNATURE. PUBLICATION OF THIS DOCUMENT DOES NOT CONSTITUTE THE ARCHITECT'S ASSUMPTION OF LIABILITY FOR THE PROJECT. THIS DOCUMENT IS FOR USE ONLY FOR THE PROJECT IDENTIFIED IN THE TITLE BLOCK AND IS NOT TO BE USED FOR REPAIR, REUSE, OR ADAPTION TO ANY OTHER PROJECT.

△	
△	
△	
△	
△	

Revisions:

Sheet Title:

OVERALL SITE PLAN

Designed by: CDA/DM/EF
 Drawn by: CDA/MW
 Checked by: DM/EF/JM

Sheet No.

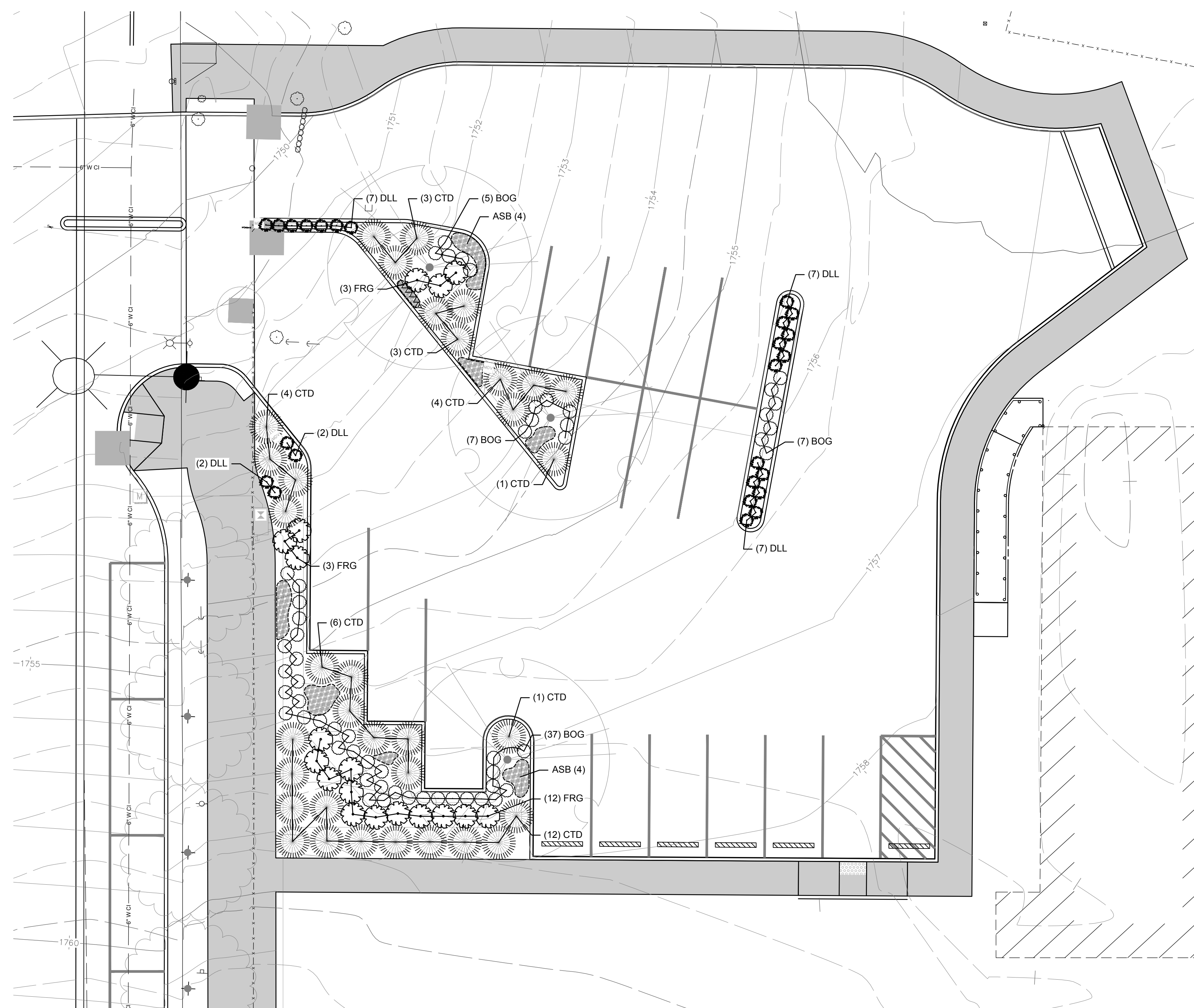
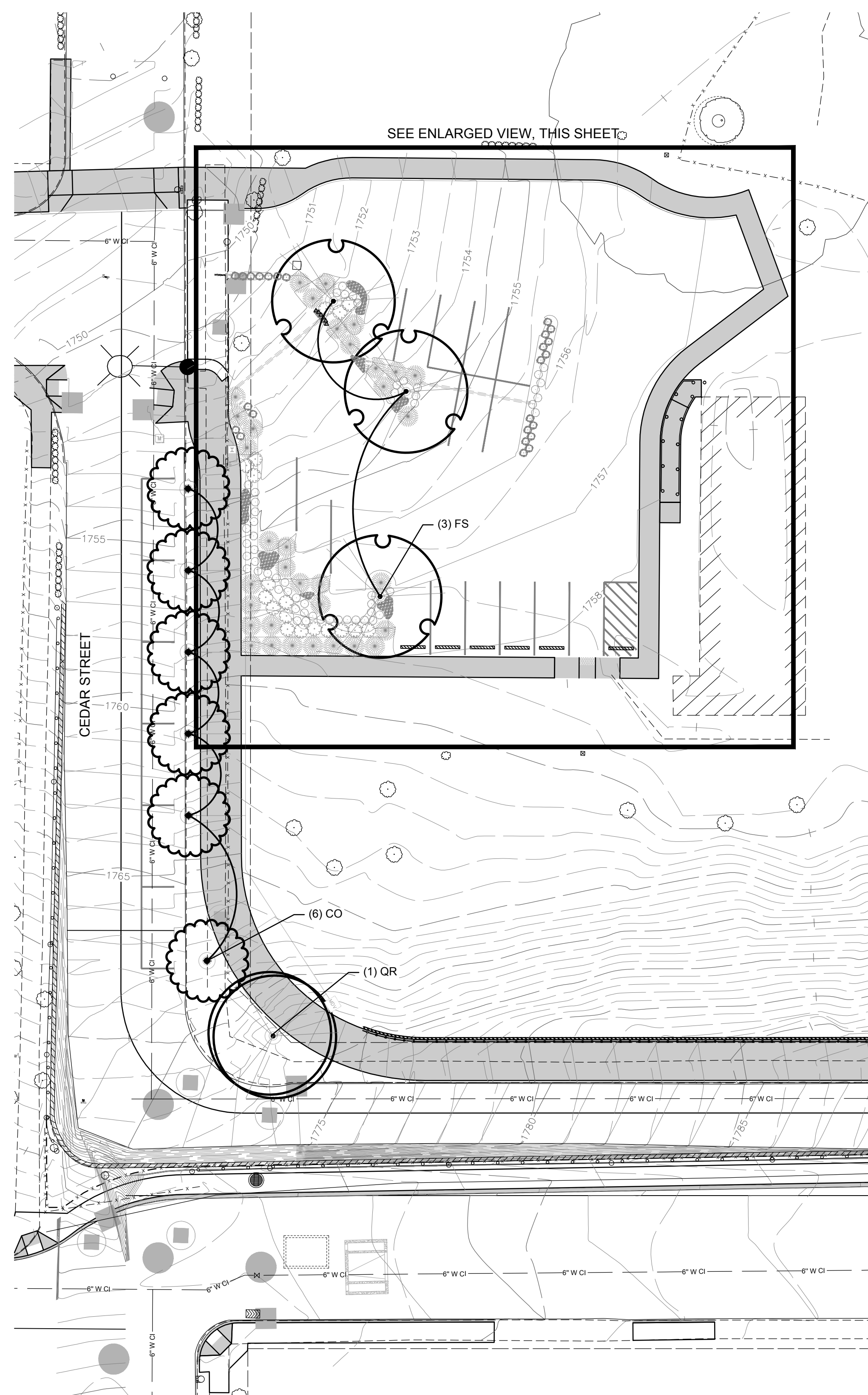
L1.0

2 of 11 Sheets



Know what's below.
 Call before you dig.

GENERAL NOTES:
1. SEE SHEET L-D1 FOR PLANTING DETAILS.



ENLARGED VIEW
SCALE: 1" = 10'



Plotted On: Nov. 17, 2017 - 11:00am

DATE	BY	PROJ	DESCRIPTION	DATE	BY	PROJ	E.F.N. U.S.N.	FROM	TO	COUNCIL	ACCEPT	DATE
			REVISIONS									
			AS BUILT									

NAVD88 = (OLD GDM ELEV.) (13.13)	AS OF: JANUARY, 2000 USE NORTH AMERICAN VERTICAL DATUM OF 1989 (NAVD88)
MARK LOCATION	MAIN & CEDAR - SW COR. 4.5' SSC, 14.0' WWC
NAVD88 ELEV.	1787.77
CBM NO.	2N 14W
NAVD88 DATUM	

CURRENT C.O.S. DESIGN STANDARDS ADOPTED FEB. 2007	CITY OF SPOKANE
BY: RIE	DATES: 11/20/17
REVISIONS:	
CHECKED: DAS	11/20/17
APPROVED: DAS	11/20/17

PROJECT NAME:	CSO BASIN 25 IMPROVEMENT - PHASE 1	
SEGMENT LIMITS:	PARKING LOT & CEDAR AVENUE	
PROJECT LIMITS:	ASH ST. TO MAIN AVE.	
TYPE OF IMPROVEMENT:	LANDSCAPE	
CITY PROJECT NUMBER:	2017177	CITY PLAN NUMBER: MAIN V(1)3
		18-25-42

CALL BEFORE YOU DIG 1-800-424-5555