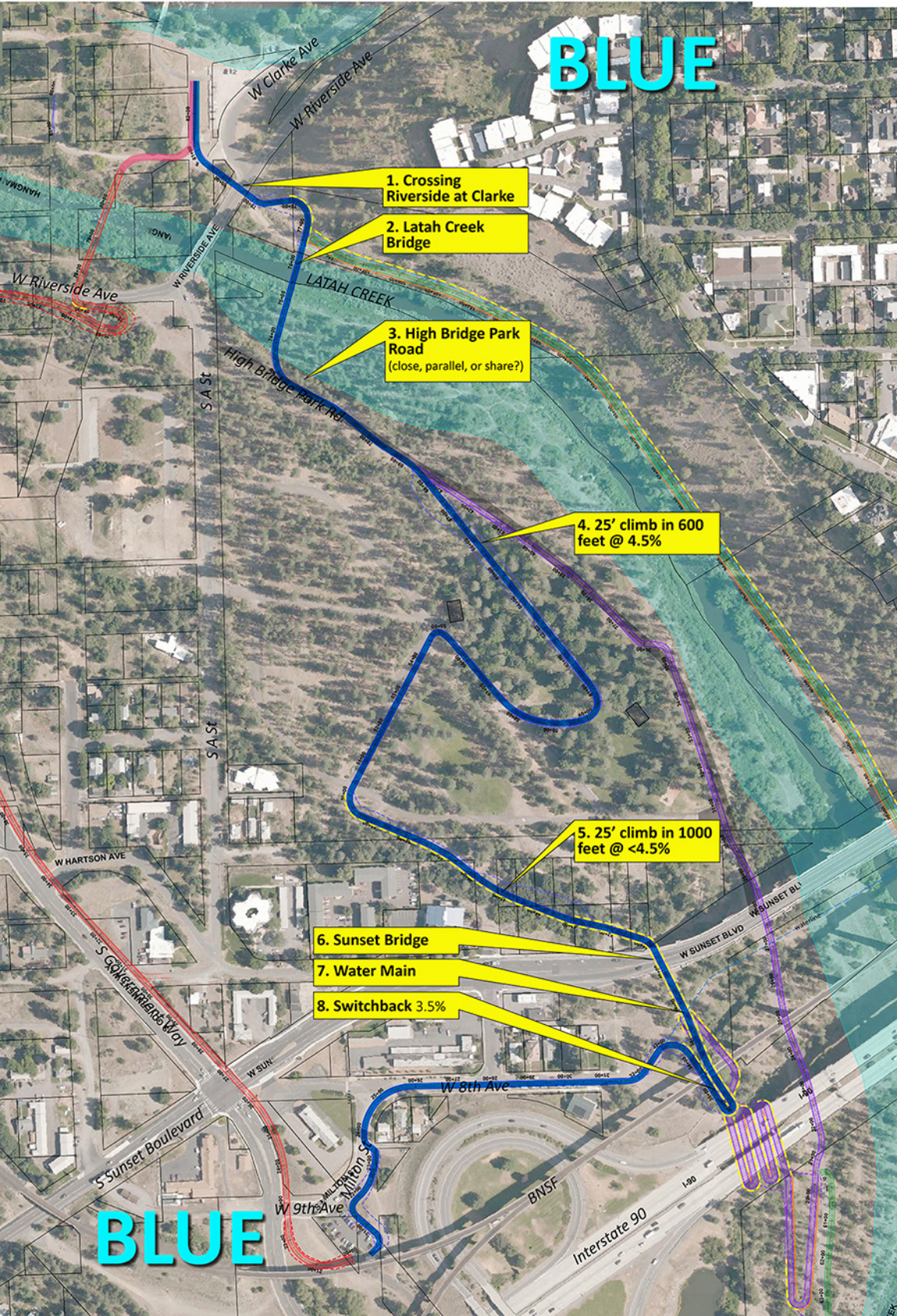


# BLUE



1. Crossing Riverside at Clarke

2. Latah Creek Bridge

3. High Bridge Park Road  
(close, parallel, or share?)

4. 25' climb in 600 feet @ 4.5%

5. 25' climb in 1000 feet @ <4.5%

6. Sunset Bridge

7. Water Main

8. Switchback 3.5%

# BLUE