

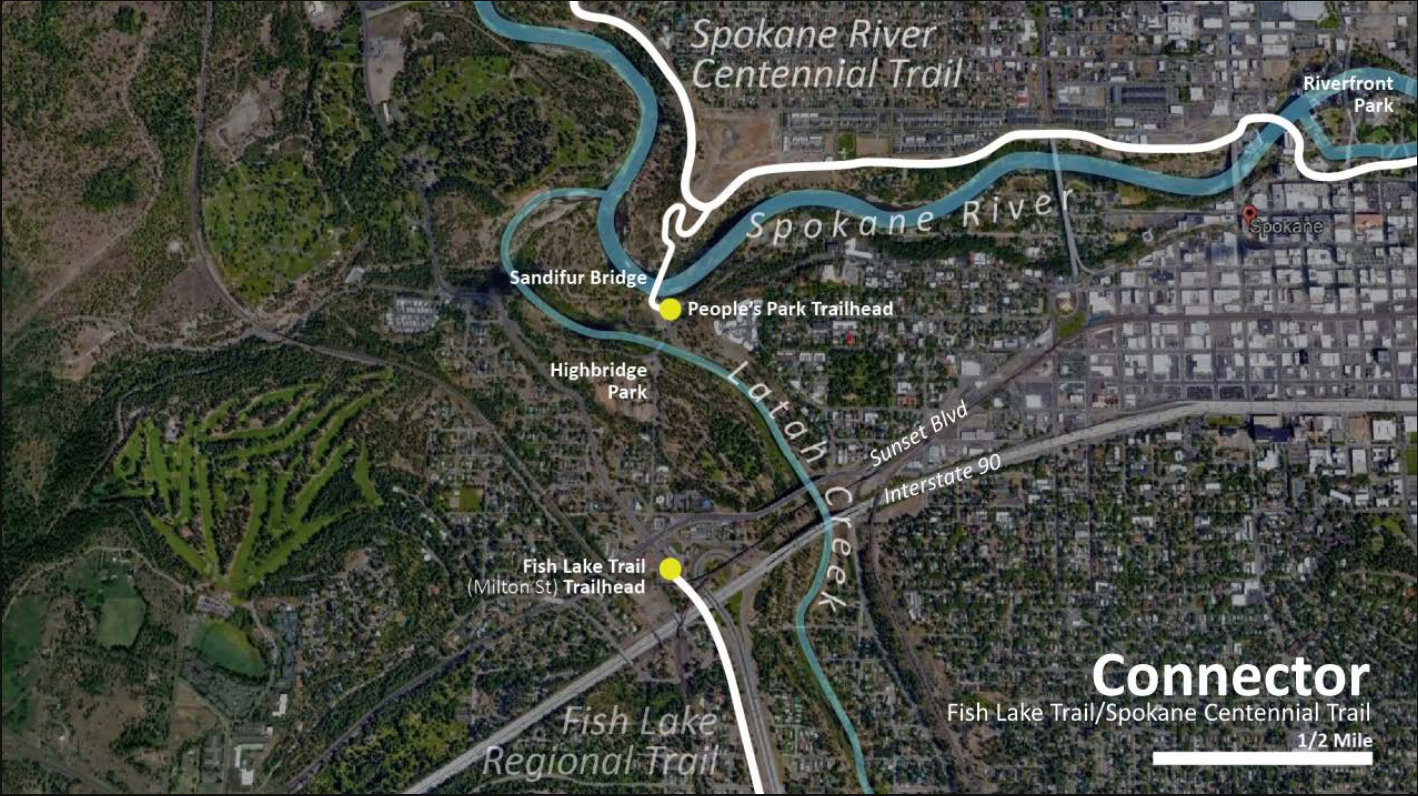
November 2, 2021

# Fish Lake Trail Connection Study Public Advisory Committee #4

# AGENDA

- Study Review and Status
- Review Public Involvement Feedback
- Evaluation of New Alternative
- Next Steps

# PROJECT OVERVIEW

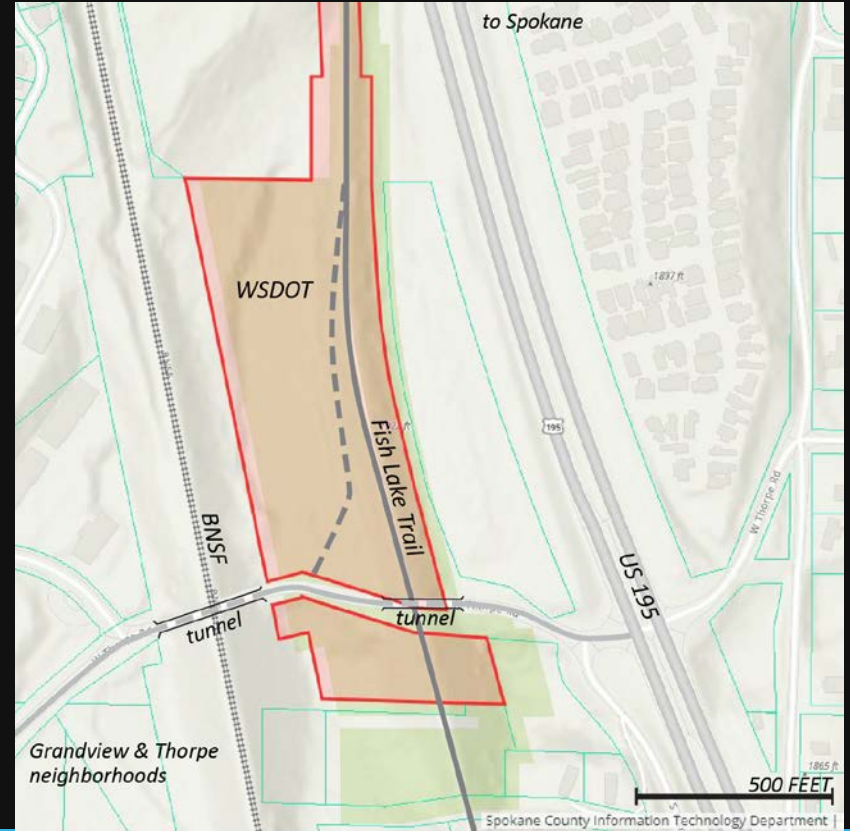


# PROJECT OVERVIEW

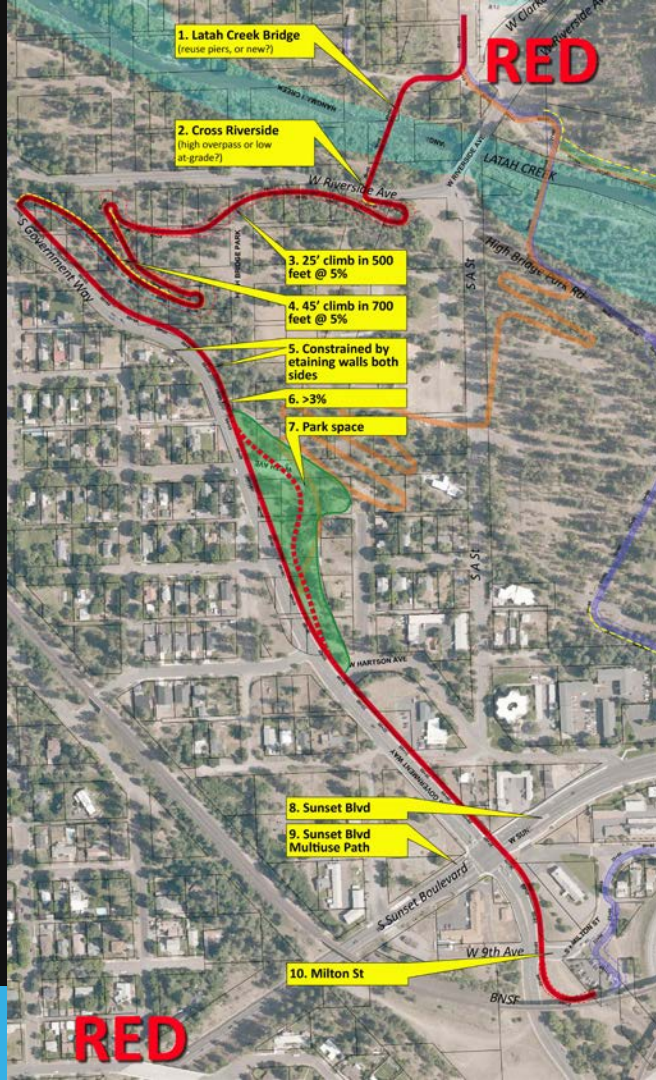




# THORPE ROAD CONNECTION

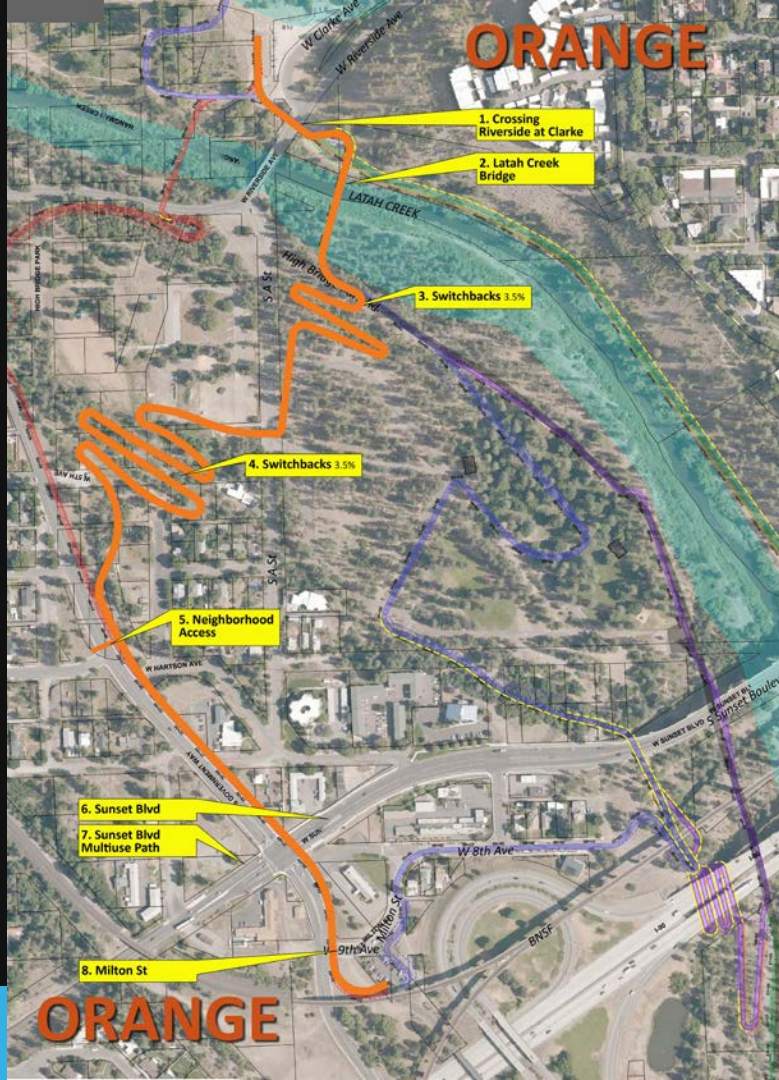


# RED

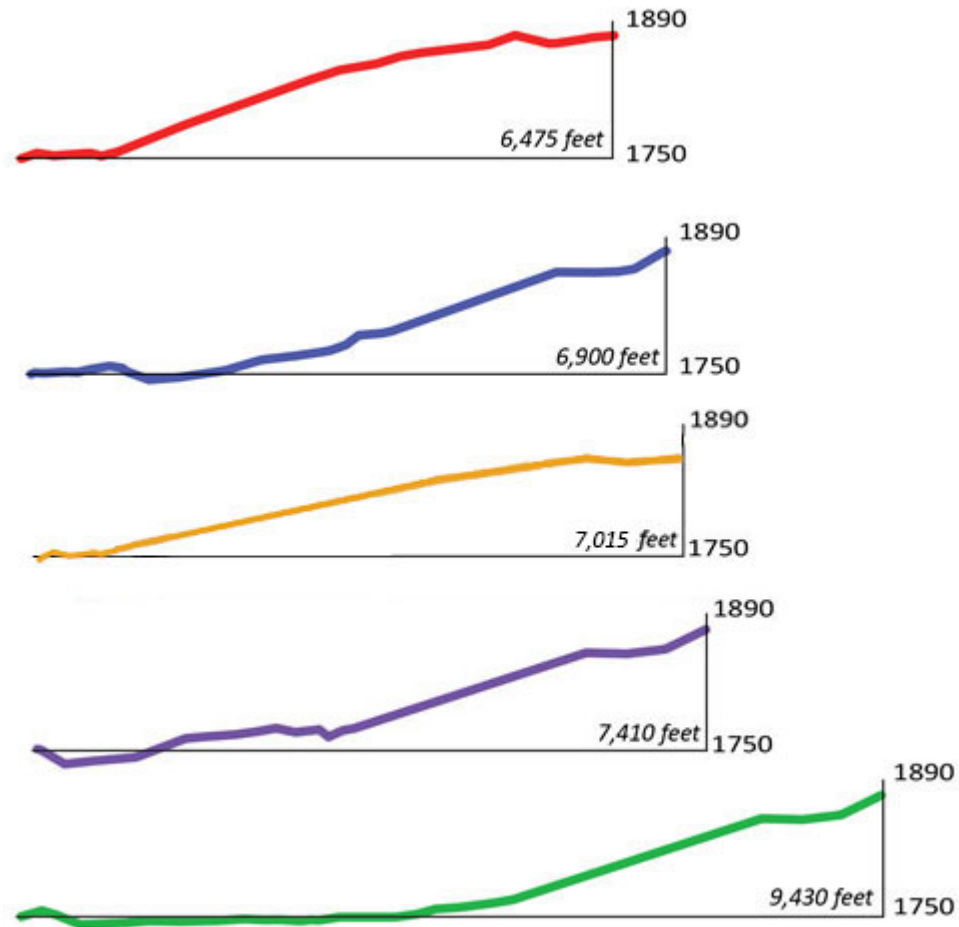




# ORANGE



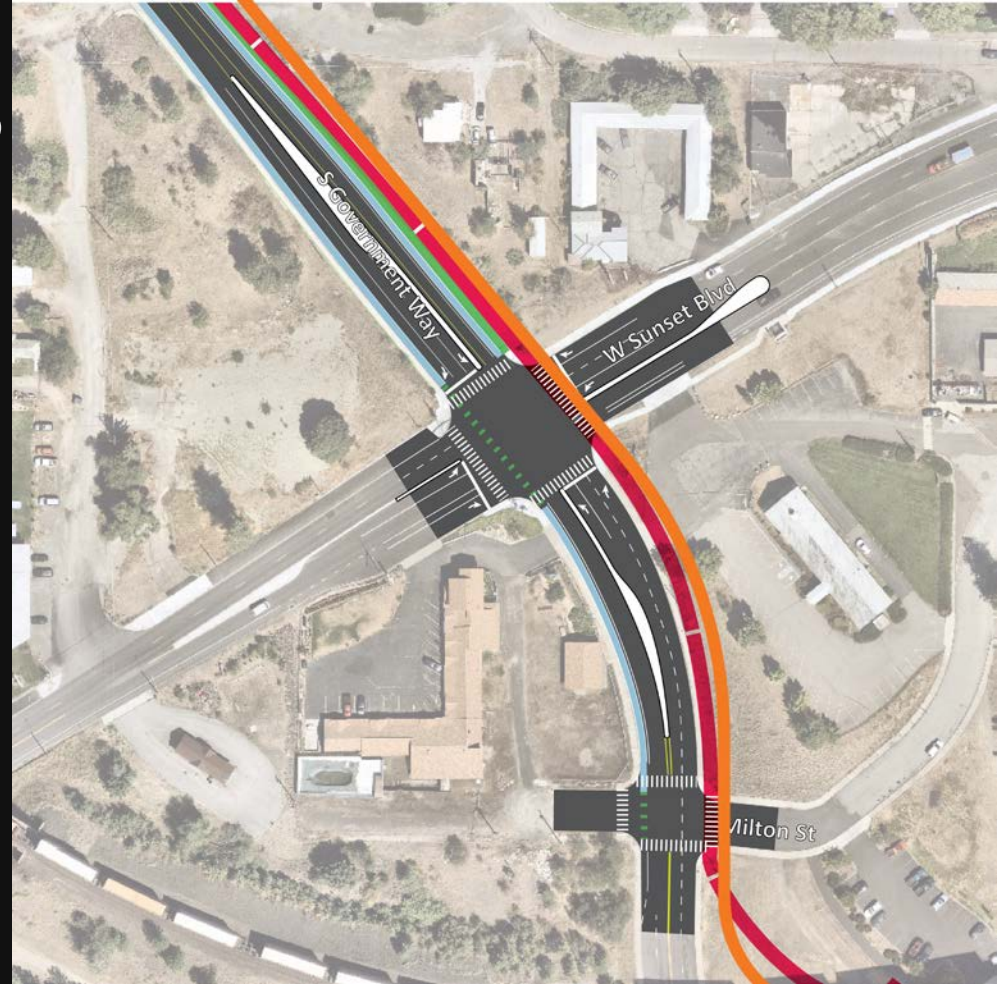
# ALIGNMENT PROFILES



# ALIGNMENT PROFILES

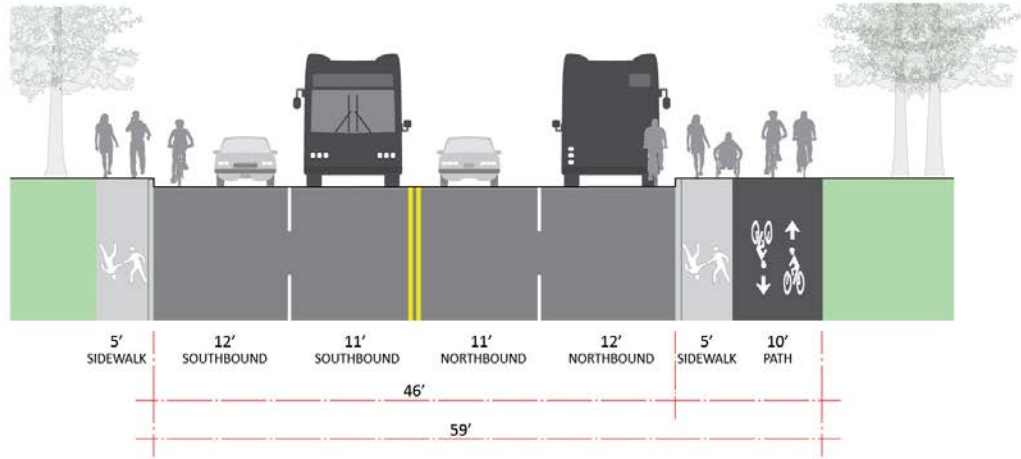


# ROADWAY CROSSINGS

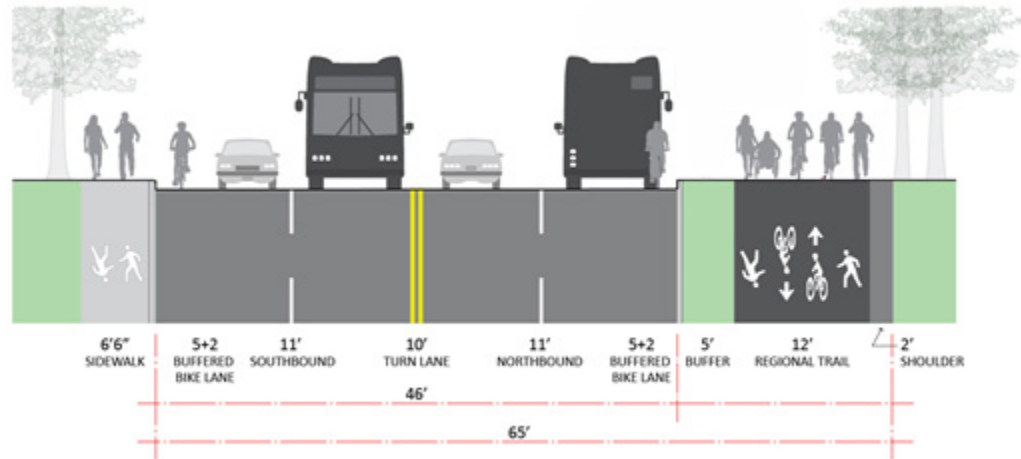


# ORANGE

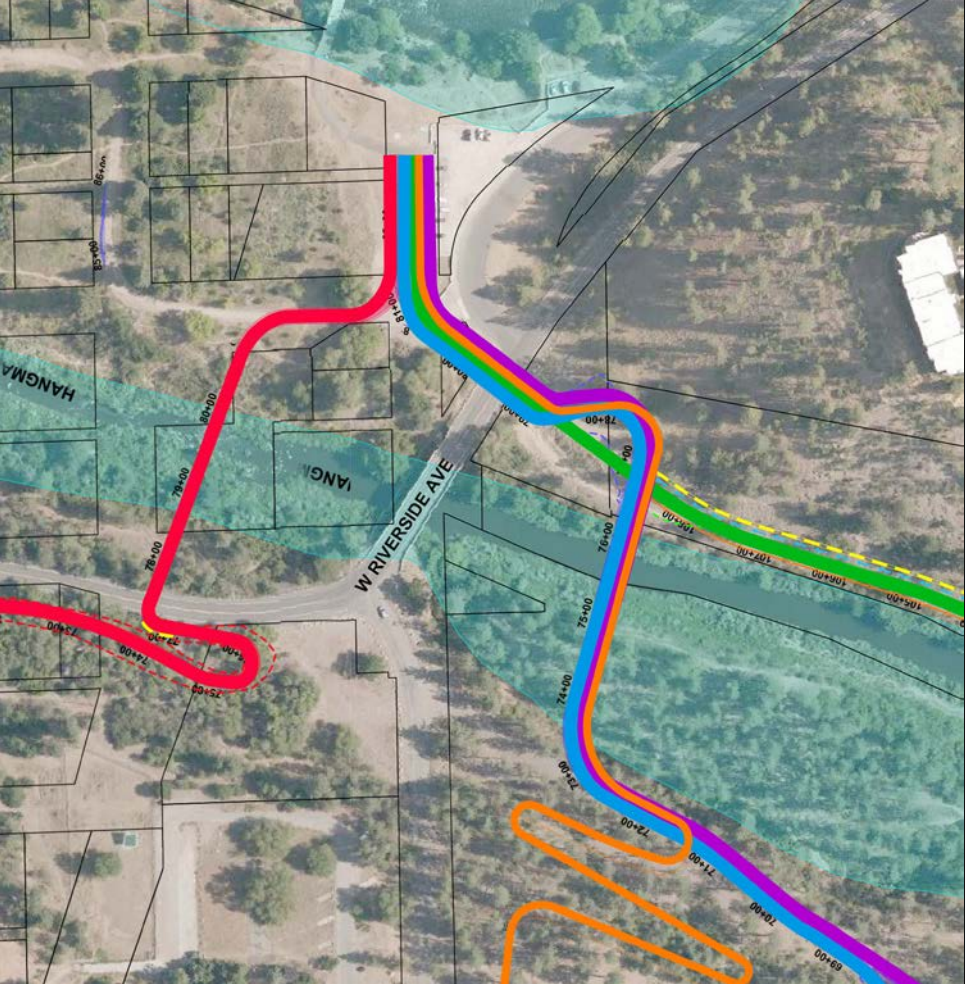
Existing



Proposed



# ROADWAY CROSSINGS



# ESTIMATED CONSTRUCTION COSTS

- **Red Alignment:** \$ 7.5M;
  - \$ 8.9M with grade-separated bridge at Riverside
- **Blue Alignment:** \$ 11.8M
- **Purple Alignment:** \$ 14.3M
- **Green Alignment:** \$ 21.9 M
- **Orange Alignment:** \$10.1M
- **Thorpe Road Connection:** \$ 900K
  - \$ 10M with Bored Tunnel

# PREVIOUS EVALUATION

Alternatives Evaluation Matrix		Weight 1-5 (least important to most)	RED	BLUE	PURPLE	GREEN	Legend
			Riverside/ Government Way	Through High Bridge Park	Through High Bridge Park	East of Latah Creek	
<b>User Experience</b>	Traffic Stress Experience	5	1	5	5	5	5
	Traffic Safety	5	3	4	4	4	4
	Local Access / Connections	4	4	2	3	3	4
	Scenic Views	4	2	3	4	5	2
	Interpretive Opportunity	2	3	4	4	3	5
	Grade	3	3	3	2	2	4
	Distance	1	4	3	2	2	4
<b>Environment</b>	Personal Security	5	4	2	2	3	3
	Wetlands, Floodplains	4	4	3	2	1	1
	Priority Habitat and Species	4	4	3	2	1	1
	Trees	2	4	2	3	3	3
<b>Cultural Resources</b>	Tribal	5	4	3	3	2	2
	SHPO/Local Historic	4	3	3	3	3	3
	Section 4(f)	2	4	2	3	3	3
<b>Compliance</b>	Permitting Timelines	1	4	3	3	2	2
	Mitigation Requirements	3	4	3	3	1	1
	Litigation / Challenges	2	3	3	2	2	2
<b>Constructability</b>	Bridge over Latah Creek	1	2	3	3	5	5
	Cut/fill	3	4	2	2	1	1
	Walls	4	3	2	1	1	1
	Existing Infrastructure	5	4	3	1	1	1
	Schedule	2	3	2	2	1	1
<b>Construction Cost</b>		3	5	3	2	1	1
<b>Average:</b>		unweighted	3.43	2.87	2.65	2.39	
		weighted	3.41	2.93	2.68	2.42	

# EVALUATION OUTCOMES

		<b>RED</b> <i>Riverside/ Government Way</i>	<b>BLUE</b> <i>Through High Bridge Park</i>	<b>PURPLE</b> <i>Through High Bridge Park</i>	<b>GREEN</b> <i>East of Latah Creek</i>
<b>Average:</b>	unweighted	3.43	2.87	2.65	2.39
	weighted	3.41	2.93	2.68	2.42

# FLT SURVEY APRIL 2021

## What is your highest priority as a trail user?

- Park-like environment along the trail 67%
- Lower cost and faster timeline to completion 18%
- Other 14%
  - Personal Safety
  - Connections to neighborhoods
  - Minimal interference with disc-golf course
  - Minimal interference with dog park
  - Distance from homeless encampments
  - Separation from traffic
  - Family-friendly
  - Connections to other trails

# FLT SURVEY APRIL 2021

Which alignment do you prefer?

- None of the above 4%
- Red Alignment 33%
- Blue Alignment 63%

# FLT SURVEY APRIL 2021

Do you have any comments or concerns to share with city staff?

Of the 15 comments...

- Safety 5
- Park Activation 3
- Impacts to other Park Uses 3
- Neighborhood Connections 2

# EVALUATION UPDATE

		Weight 1-5 (least important to most)	RED <i>Riverside/ Government Way</i>	BLUE <i>Through High Bridge Park</i>	PURPLE <i>Through High Bridge Park</i>	GREEN <i>East of Latah Creek</i>	ORANGE <i>Through High Bridge Park</i>
<b>User Experience</b>	Traffic Stress Experience	5	1	5	5	5	
	Traffic Safety	5	3	4	4	4	
	Local Access / Connections	4	4	2	3	3	
	Scenic Views	4	2	3	4	5	
	Interpretive Opportunity	2	3	4	4	3	
	Grade	3	3	3	2	2	
	Distance	1	4	3	2	2	
	Personal Security	5	4	2	2	3	
	Park Activation/Integration	5					
<b>Average:</b>		unweighted	3.43	2.87	2.65	2.39	2.87
		weighted	3.19	2.75	2.51	2.27	1.63

# NEXT STEPS

- Complete Final Report with the ultimate recommendation
- Schematic Design Documents and refined Cost Estimate
  - Phased development
- Initiate Agency and Tribal Consultation



kpff



Thank you.