
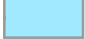
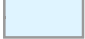

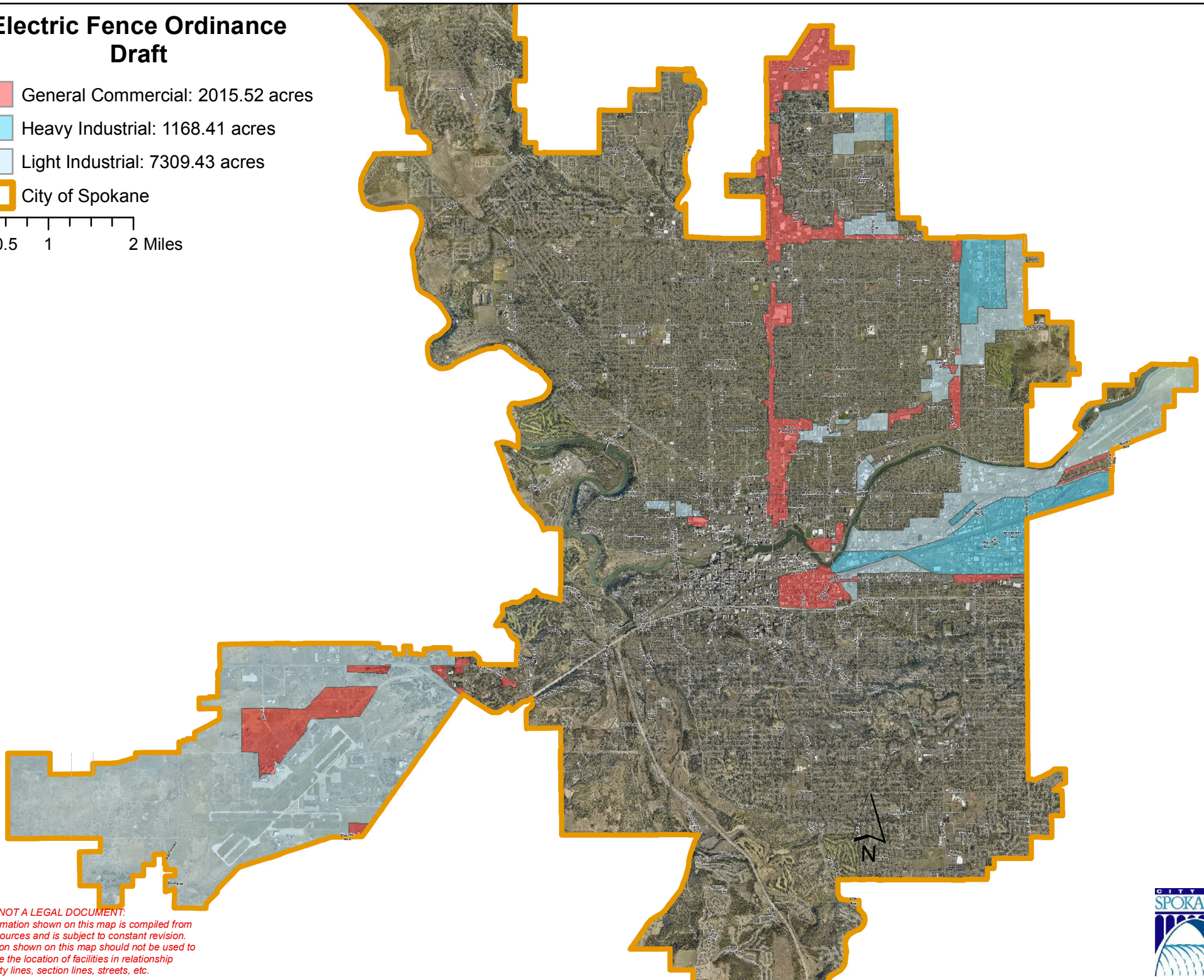
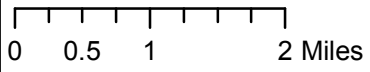


Electric Fence Ordinance Draft

-  General Commercial: 2015.52 acres
-  Heavy Industrial: 1168.41 acres
-  Light Industrial: 7309.43 acres
-  City of Spokane



THIS IS NOT A LEGAL DOCUMENT.
The information shown on this map is compiled from various sources and is subject to constant revision. Information shown on this map should not be used to determine the location of facilities in relationship to property lines, section lines, streets, etc.

