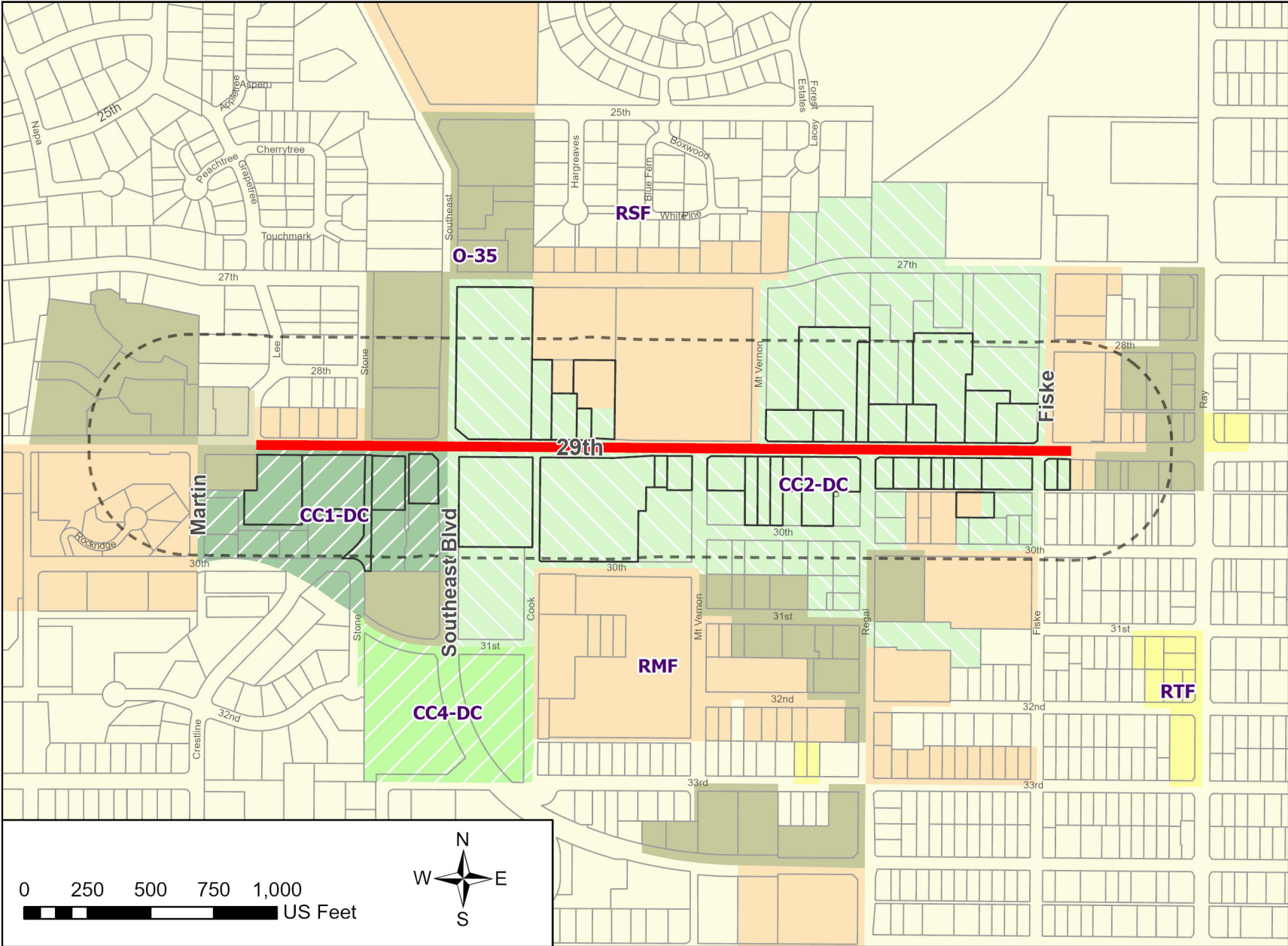




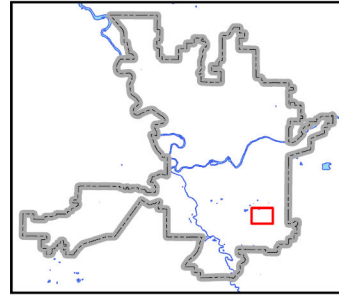
# Proposed Zoning Map Amendment

## Pedestrian Street Designation of E 29th Ave at the Lincoln Heights District Center



- LEGEND**
- Proposed Pedestrian Street
  - Affected Parcels
  - Notification Area
  - Other Parcels
- Current Zoning**
- Center and Corridor Type 1
  - Center and Corridor Type 2
  - Mixed Use Transition-CC4
  - Office
  - Office Retail
  - Residential Multifamily
  - Residential Two-Family
  - Residential Single-Family

### PROPOSAL LOCATION



**THIS IS NOT A LEGAL DOCUMENT:** The information shown on this map is compiled from various sources and is subject to constant revision. Information shown on this map should not be used to determine the location of facilities in relationship to property lines, section lines, streets, etc. For questions on the information provided herein, contact the City of Spokane, Planning and Economic Development Services.

Drawn by Brandon Whitmarsh  
 Planning and Economic Development Services  
 10/24/2023  
 Scale: 1:6,863

