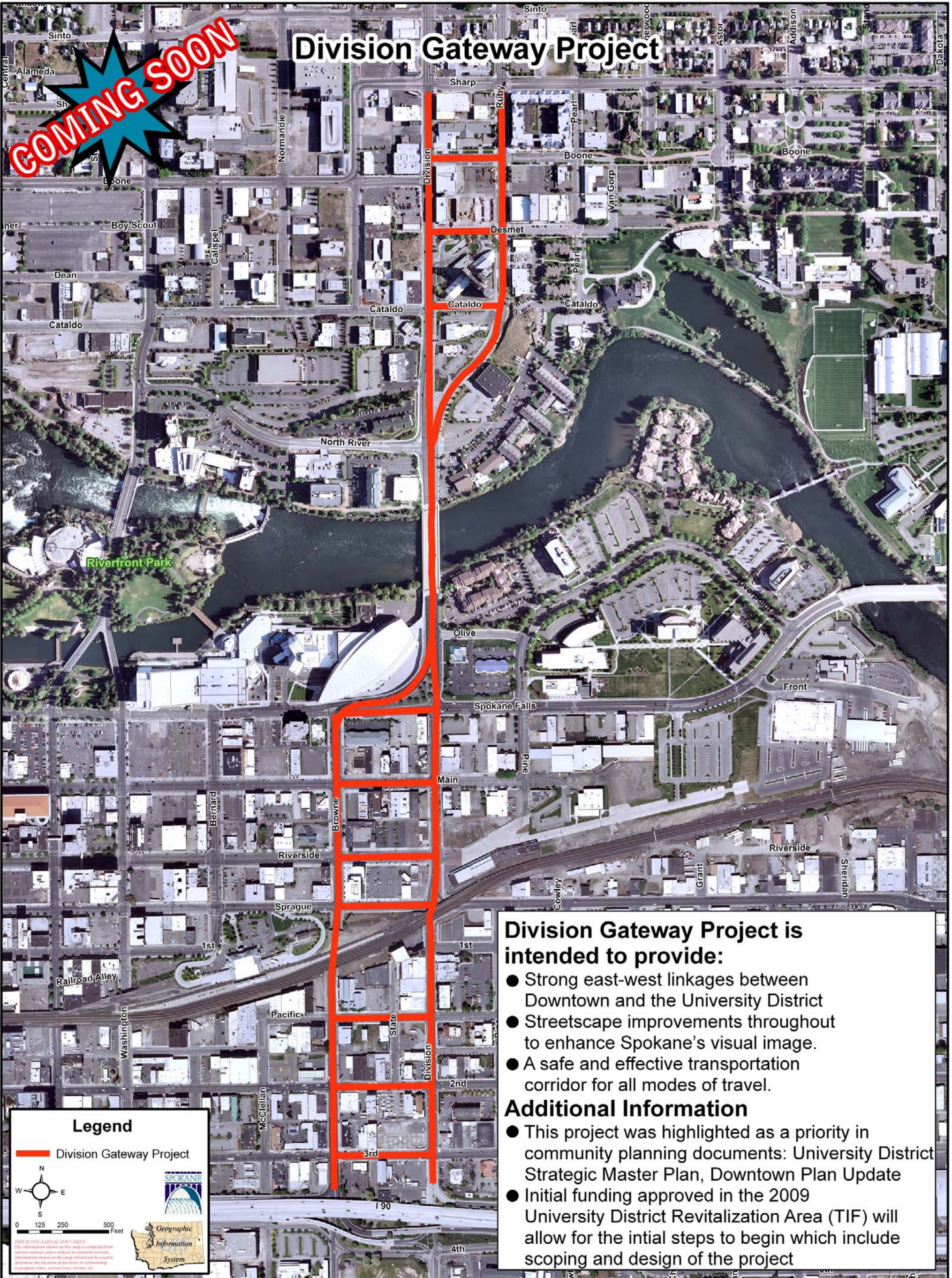


Division Gateway Project

COMING SOON



Division Gateway Project is intended to provide:

- Strong east-west linkages between Downtown and the University District
- Streetscape improvements throughout to enhance Spokane's visual image.
- A safe and effective transportation corridor for all modes of travel.

Additional Information

- This project was highlighted as a priority in community planning documents: University District Strategic Master Plan, Downtown Plan Update
- Initial funding approved in the 2009 University District Revitalization Area (TIF) will allow for the initial steps to begin which include scoping and design of the project

Legend

— Division Gateway Project

Geographic Information System

THIS IS NOT A LEGAL DOCUMENT. The information shown on this map is compiled from various sources and is subject to constant revision. Information shown on this map should not be used to determine the location of structures or other improvements, or property lines, section lines, streets, etc.