



Project Location

Private property,
north side of
bridge, no public
access

Project access
route

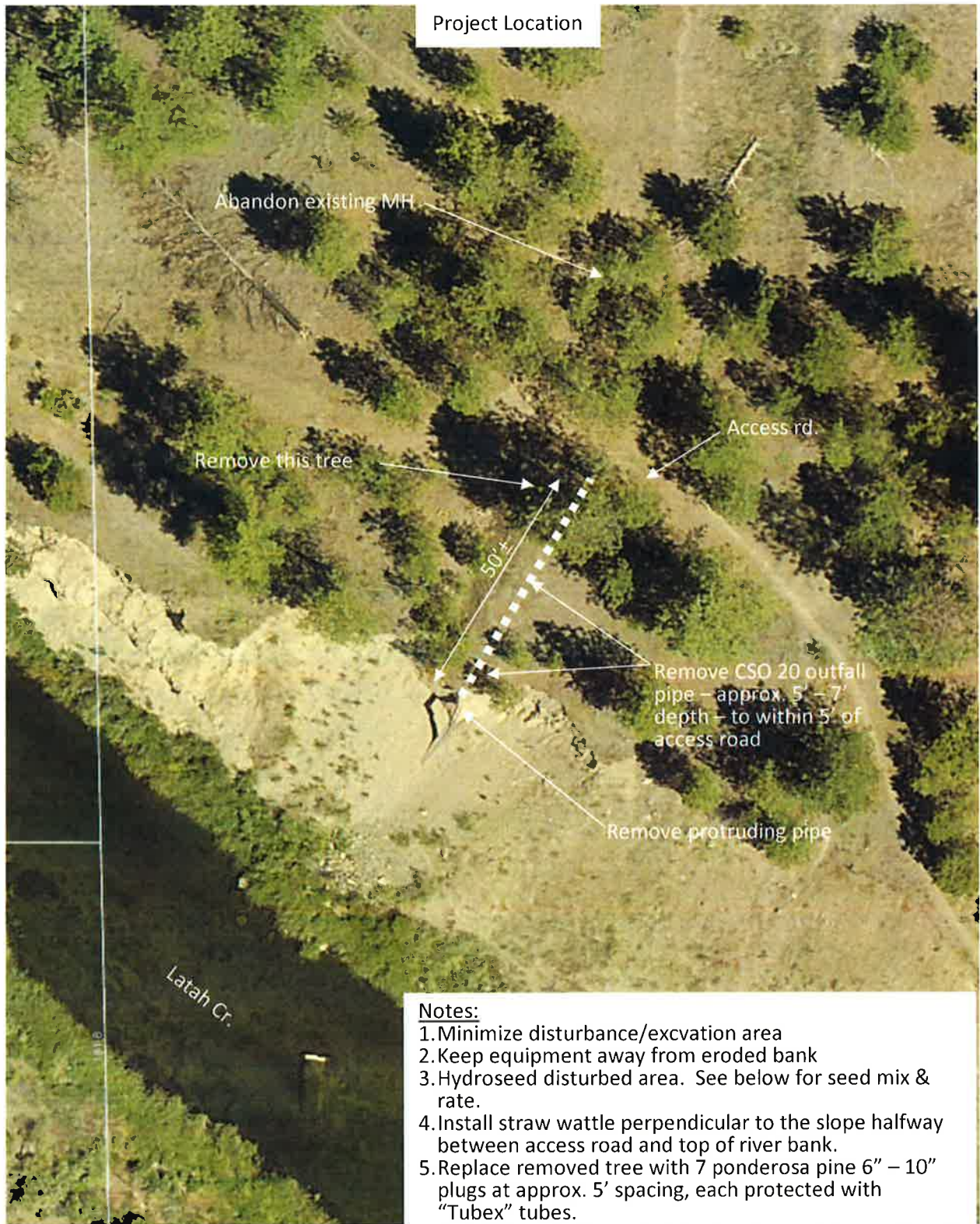
Project
location

Hwy 195

Cheney Spokane Rd.

Latah Cr

Yokes



Notes:

1. Minimize disturbance/excavation area
2. Keep equipment away from eroded bank
3. Hydroseed disturbed area. See below for seed mix & rate.
4. Install straw wattle perpendicular to the slope halfway between access road and top of river bank.
5. Replace removed tree with 7 ponderosa pine 6" - 10" plugs at approx. 5' spacing, each protected with "Tubex" tubes.
6. Install 7 serviceberry 6"-10" plugs toward the south end of the removal pipe and 7 more at the north end at approx. 5' spacing, each protected with "Tubex" tubes
7. See landscaping notes below.
8. Abandon MH per WSDOT 7-05.3(2)

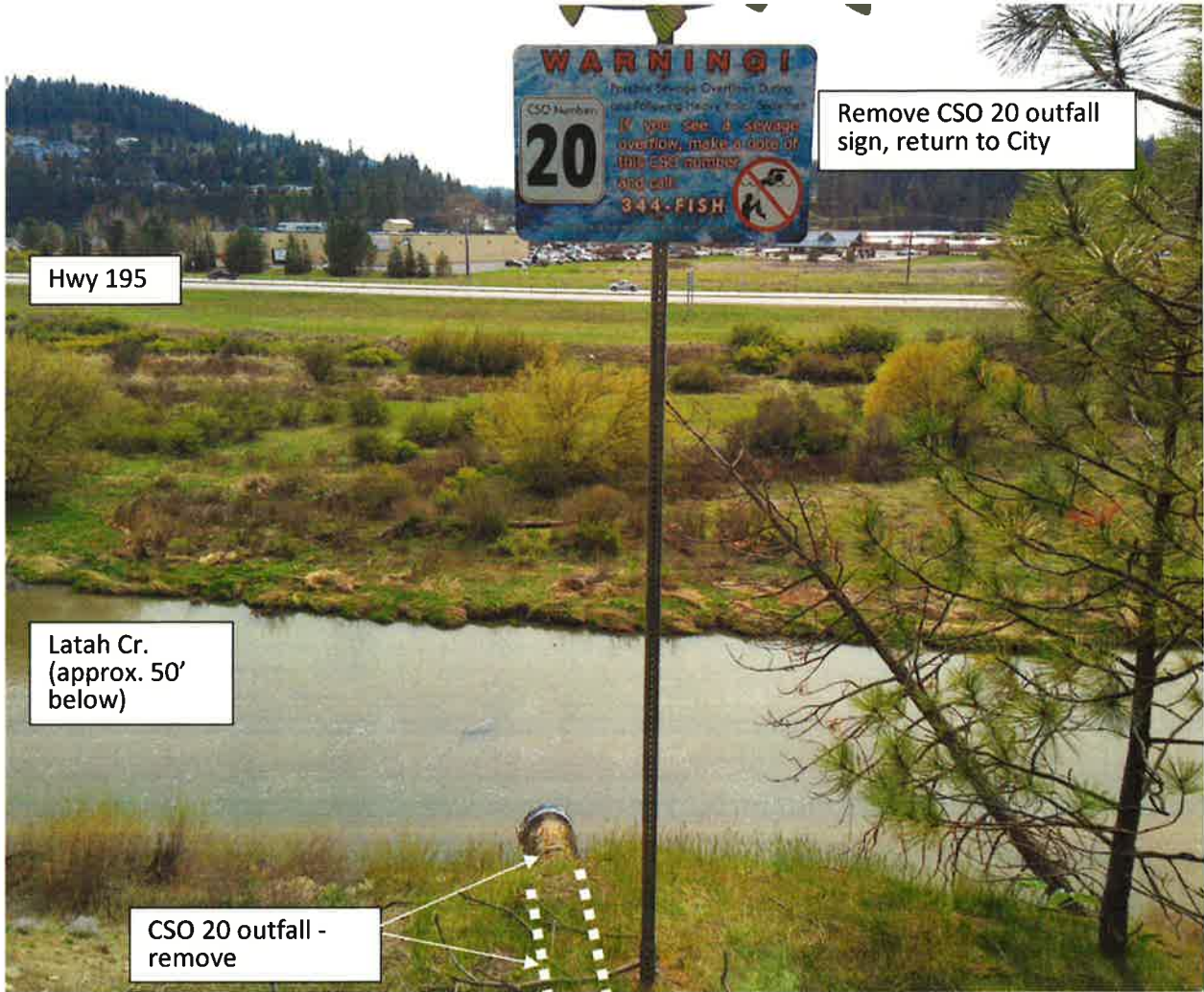


Latah Cr.
(approx. 50'
below)

CSO 20
outfall

Remove existing
pipe and "sock"

Notes:
1. Keep equipment away from eroded bank.
2. Minimize excavation area to protect eroded slope

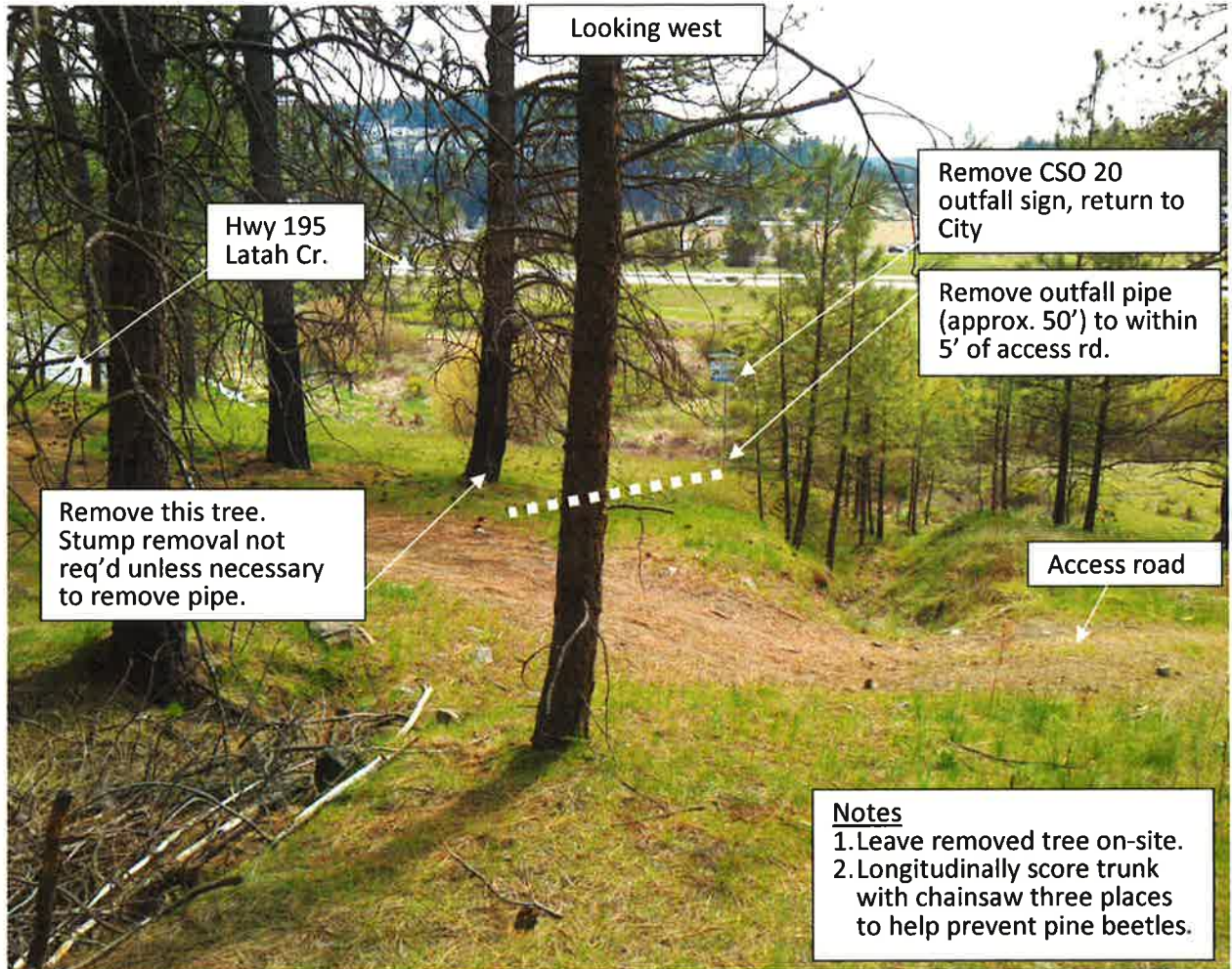


Hwy 195

Latah Cr.
(approx. 50'
below)

CSO 20 outfall -
remove

Remove CSO 20 outfall
sign, return to City



Looking west

Hwy 195
Latah Cr.

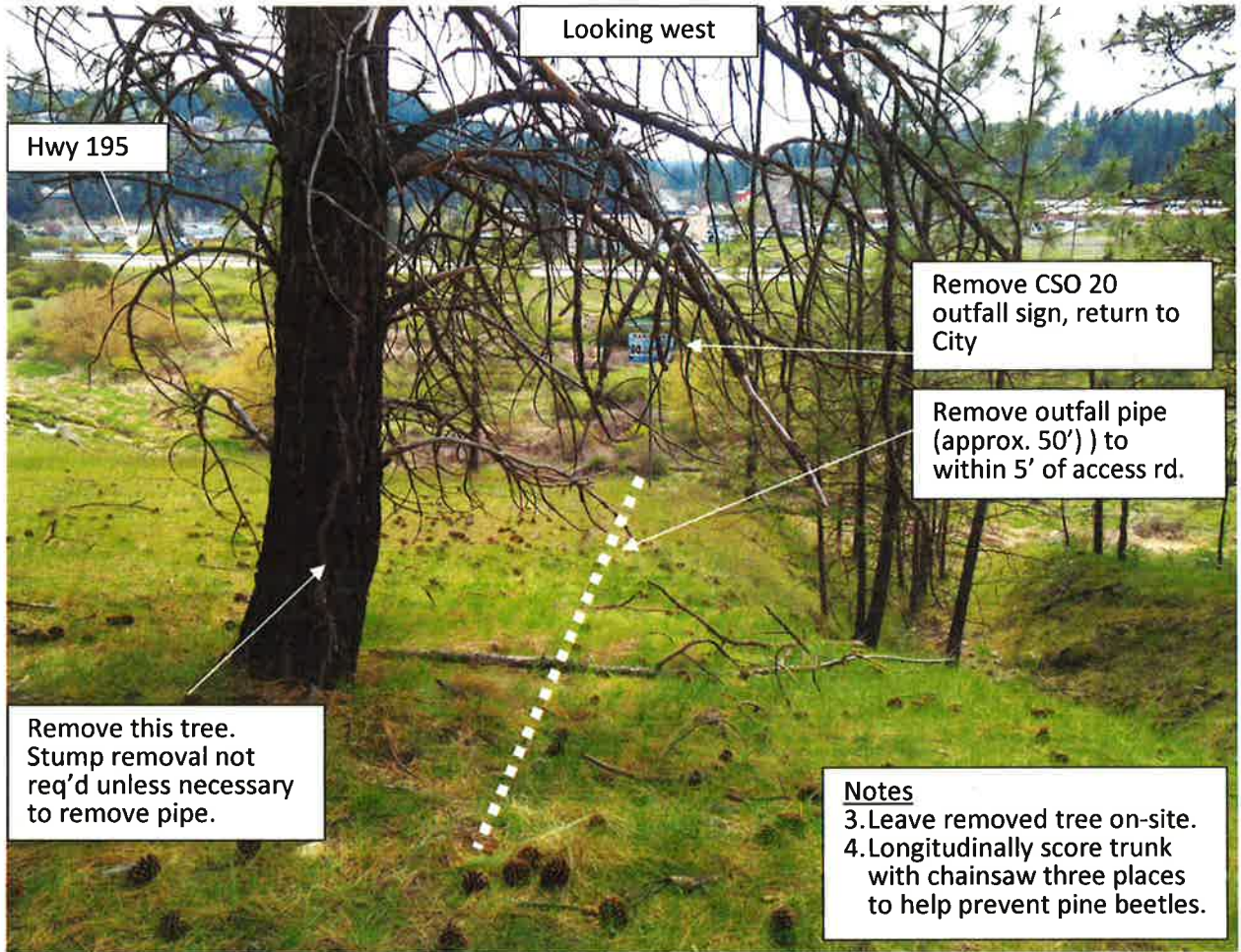
Remove CSO 20
outfall sign, return to
City

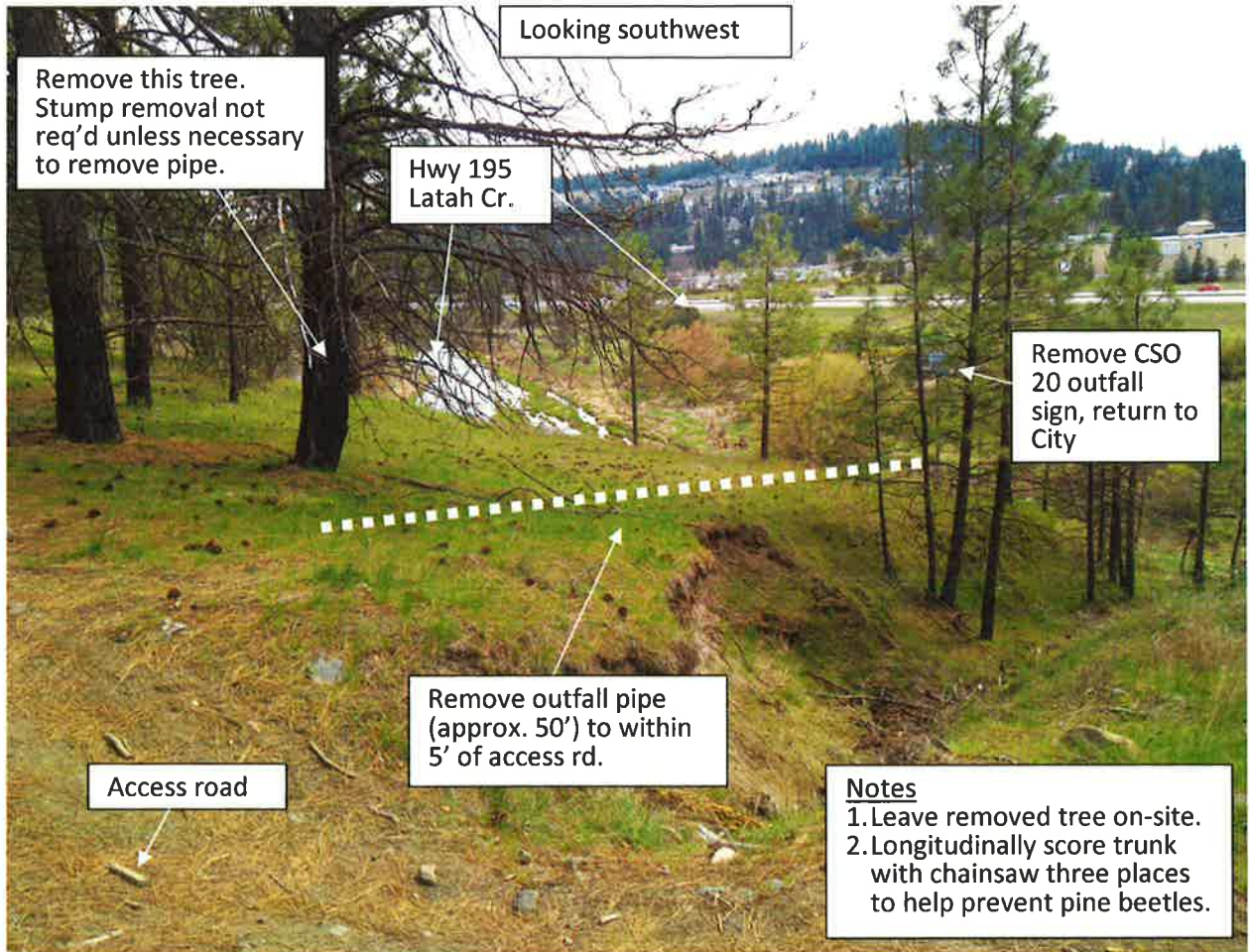
Remove outfall pipe
(approx. 50') to within
5' of access rd.

Remove this tree.
Stump removal not
req'd unless necessary
to remove pipe.

Access road

Notes
1. Leave removed tree on-site.
2. Longitudinally score trunk
with chainsaw three places
to help prevent pine beetles.





GRASS/FORB MIX

ACHILLEA MILLEFOLIUM / WESTERN YARROW	1% - Hydroseed
BALSAMORHIZA SAGITTATA / ARROWLEAF BALSAMROOT	7% - Hydroseed
ELYMUS LANCEOLATUS PSAMMOPHILUS / STREAMBANK WHEATGRASS	15% - Hydroseed
FESTUCA IDAHOENSIS / IDAHO FESCUE	29% - Hydroseed
KOELERIA MACRANTHA / PRAIRIE JUNEGRASS	15% - Hydroseed
LUPINUS SP. / SILKY LUPINE	4% - Hydroseed
POA SANDBERGII / SANDBERG'S BLUEGRASS	15% - Hydroseed
PSEUDOROEGNERIA SPICATA / BLUEBUNCH WHEATGRASS	15% - Hydroseed

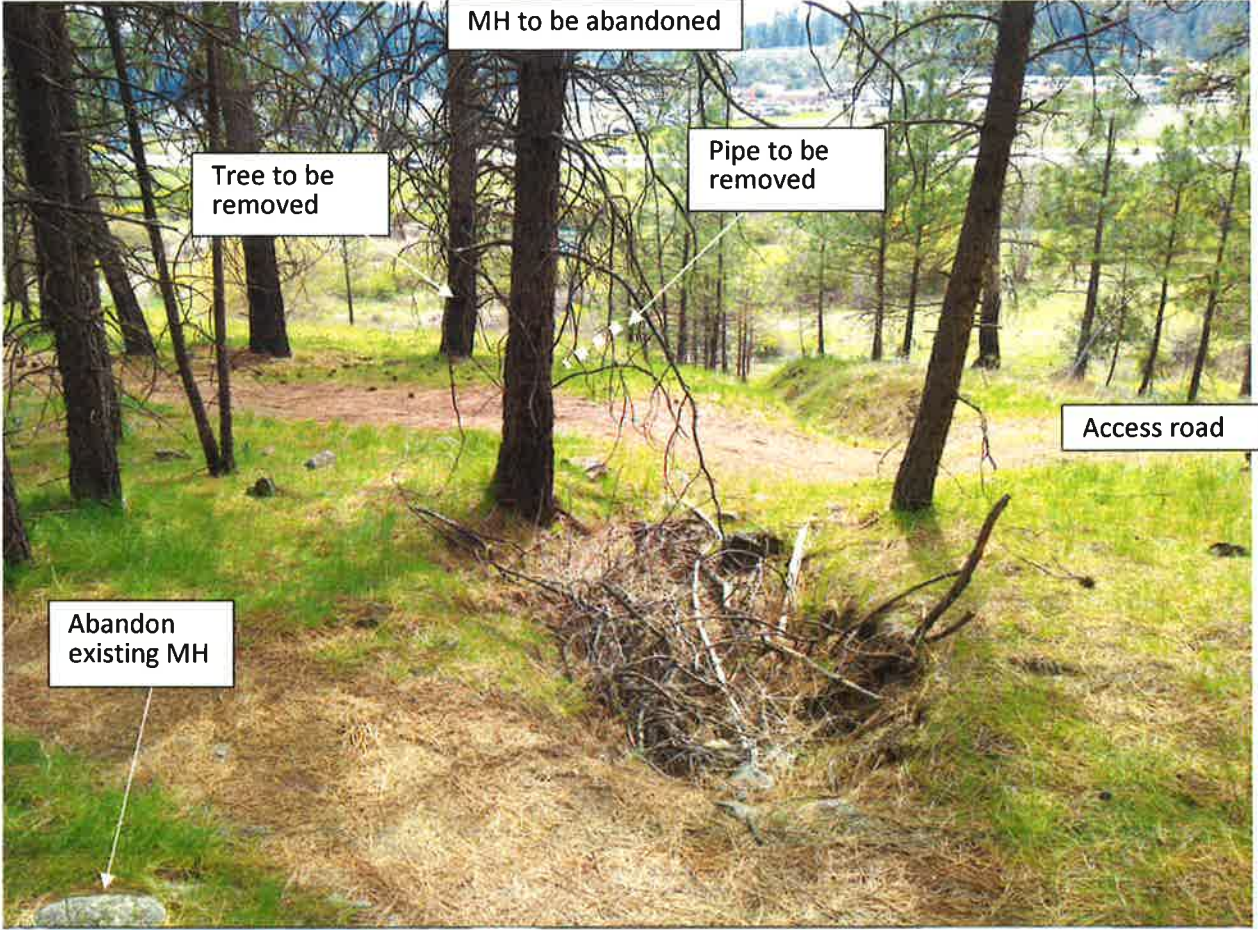
GENERAL PLANT PLUG SIZES WILL RANGE FROM 6"-10" IN HEIGHT.

ALL PLANTS WILL BE INITIALLY WATERED IN, AT THEIR TIME OF PLANTING.

'TUBEX' PLANT SHELTERS SHALL BE PLACED AROUND PLANTS AT THEIR TIME OF PLANTING.

HYDROSEED MIX, DEFINED ON PLANS, TO BE APPLIED AT A RATE OF 40 LBS PER ACRE, WITH BONDED FIBER MATRIX TACIFIER (OR APPROVED EQUAL). TACIFIER WILL BOND FIBERS TO THE SOIL FOR INCREASED EROSION CONTROL.





MH to be abandoned

Tree to be removed

Pipe to be removed

Access road

Abandon existing MH