

CHIEF GARRY PARK WALKABOUT

This Walkabout will enable one to experience Napa Street between East Mission Avenue and East Boone Avenue on foot so as to observe and discuss transit, identify opportunities, and locate specific sites to improve connectivity.

Group #1 will cover the southeastern section of Chief Garry Park Neighborhood, beginning outside of Cassano’s Grocery and proceeding south on Napa Street toward East Boone Avenue, then back up towards North Napa Street, and finally returning to Cassano’s Grocery.



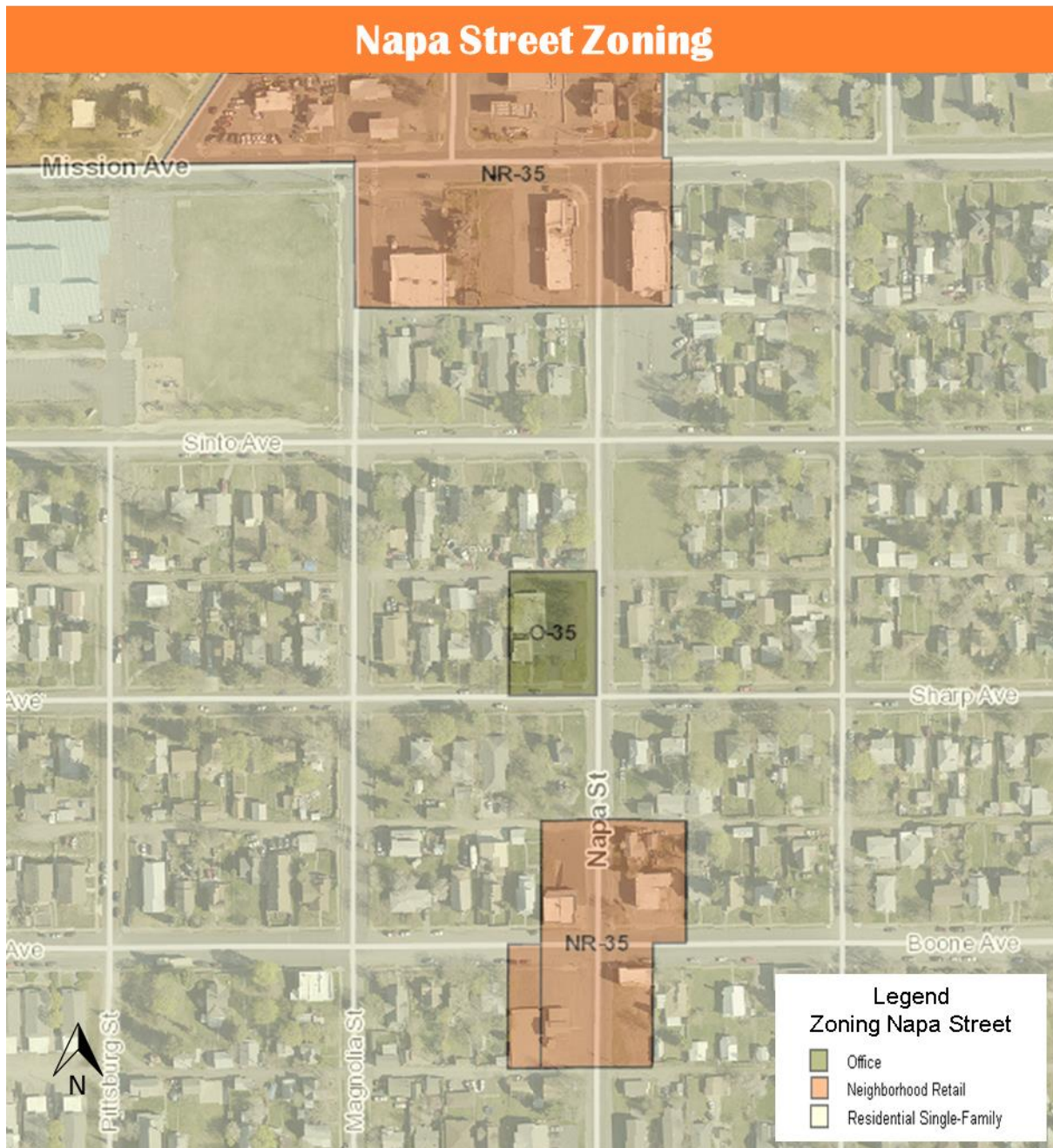
Questions to consider for Neighborhood Retail Locations:

1. Residents identified the need for better crosswalks and more crosswalks. Where?
2. Residents identified the need for better crosswalk lighting. Please identify specific locations?
3. What are your ideas for this area?
4. What amenities are you lacking?
5. What neighborhood businesses would you encourage?
6. Would you support a mix of retail, office or residential?
7. What boundaries would you draw for the neighborhood retail area?
8. What street amenities would you support?

Lighting__
Crosswalks__
Street trees__
Benches__
Shelter__
Planters__
Signage/Gateway__

Examine the images attached and identify those most appealing to you.

Current Zoning of Napa Street:



Current Land Use of Napa Street:

