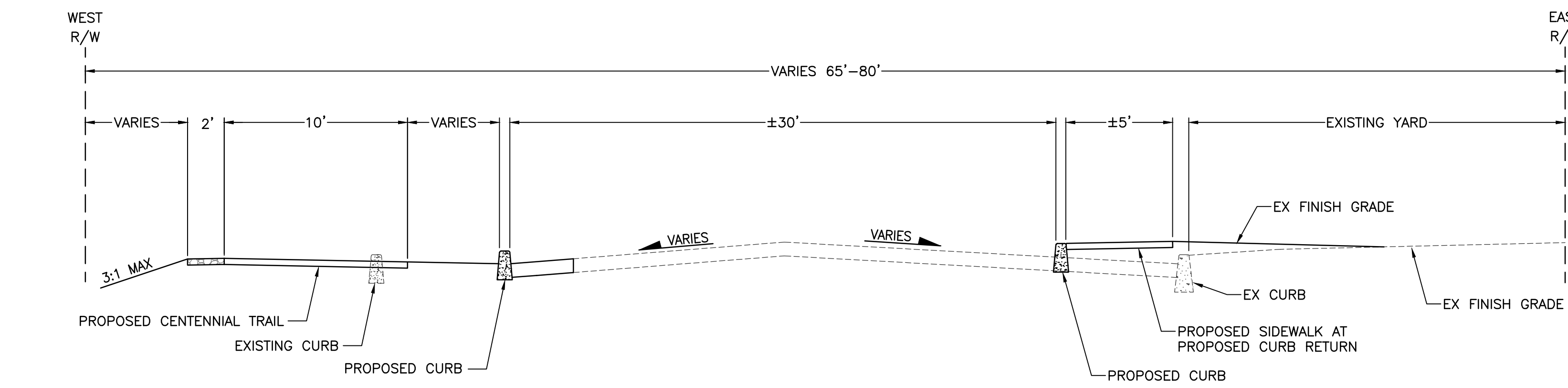
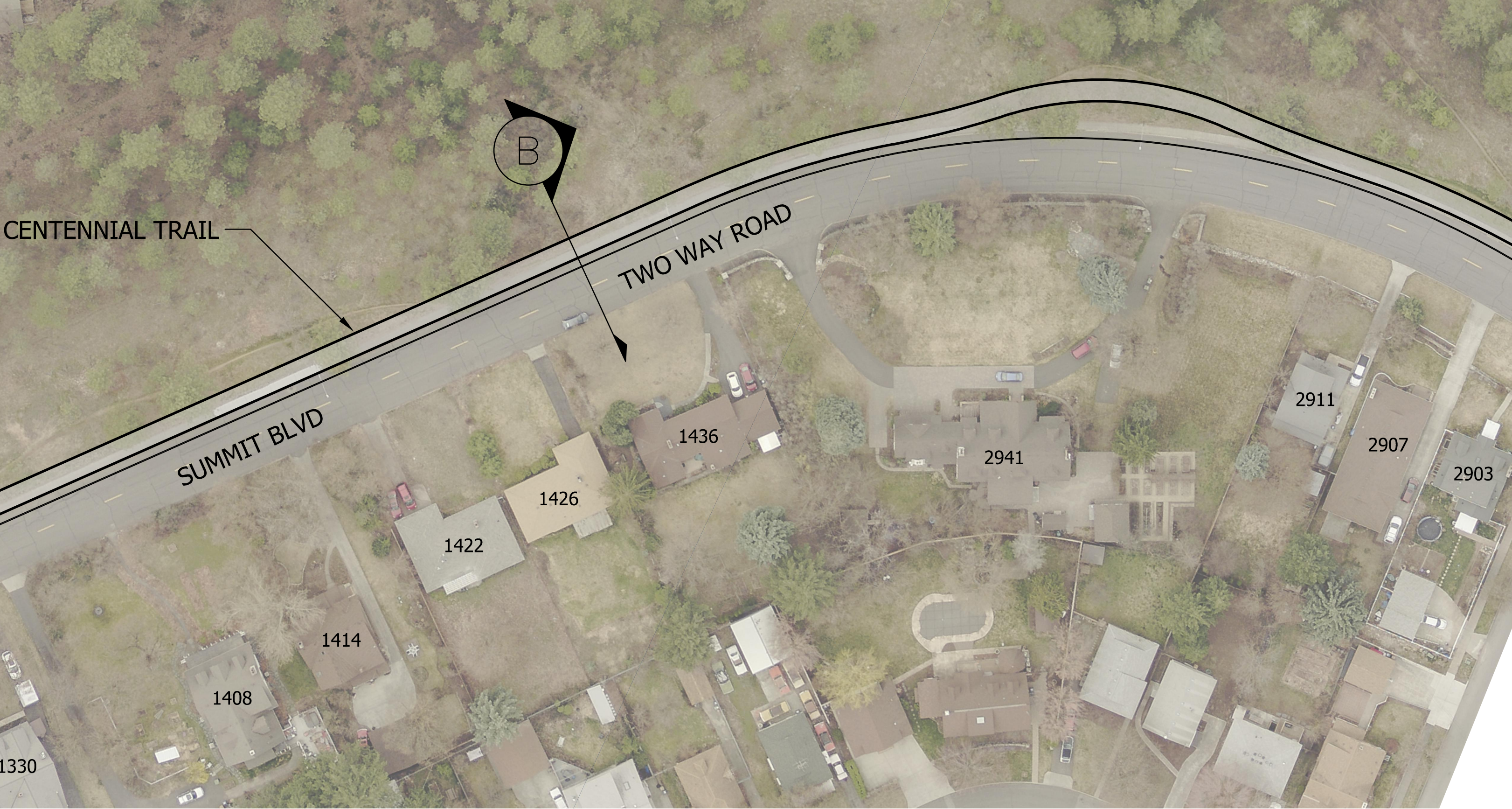
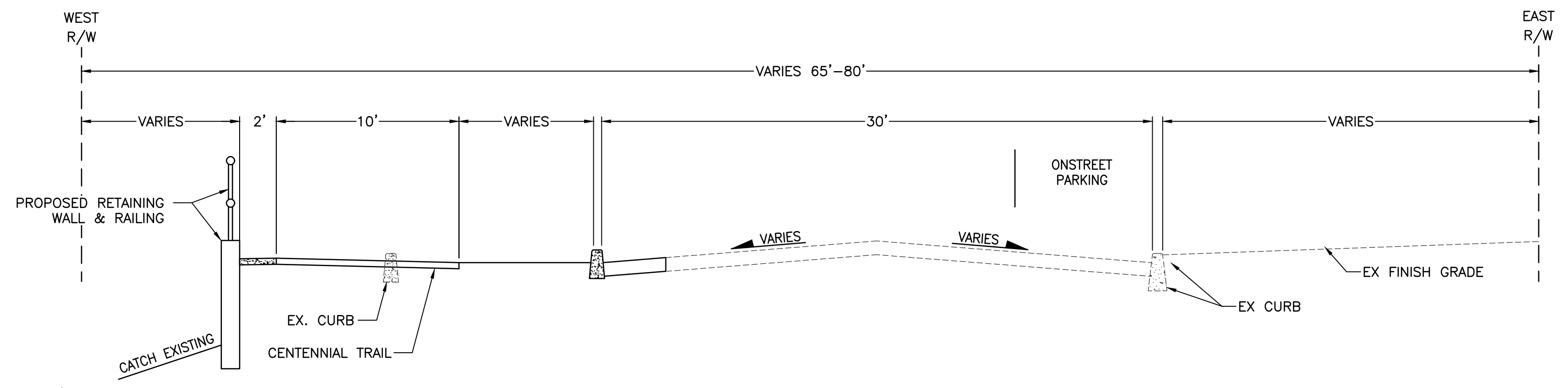


EXPLANATION OF TRAIL LOCATION – SUMMIT BLVD


- 1. TRAIL WILL BE LOCATED ALONG THE BLUFF AS FAR FROM THE ADJACENT SUMMIT BLVD AS POSSIBLE.
- 2. NOTE THAT A 5’ BUFFER BETWEEN THE ADJACENT ROADWAY AND THE TRAIL IS REQUIRED BY THE FUNDING AGENCY (ALTHOUGH LIMITED EXCEPTIONS ARE FEASIBLE).
- 3. ON THE BLUFF SIDE OF THE TRAIL, A SEPARATE 5’ BUFFER IS REQUIRED TO AVOID A REQUIREMENT FOR SAFETY RAILING.
- 4. TO MAXIMIZE THE AVAILABLE AREA FOR THE TRAIL AND REDUCE THE NEED FOR RETAINING WALLS AND ASSOCIATED RAILING, THE NORTH CURB LINE WILL BE MOVED SOUTH APPROXIMATELY 3’ THEREBY NARROWING THE ROAD.
- 5. NARROWING THE ROAD REQUIRES REMOVAL OF PARKING ON THE NORTH SIDE. NOTE THAT THERE ARE NO HOUSES ON THE NORTH SIDE.
- 6. IN A NUMBER OF LOCATIONS, THE TOP OF THE BLUFF IS CLOSE ENOUGH TO THE NORTH EDGE OF SUMMIT BLVD. THAT RETAINING WALLS WILL BE REQUIRED TO CONSTRUCT THE TRAIL.
- 7. WHERE RETAINING WALLS ARE REQUIRED OR WHERE THERE IS LESS THAN 5’ FROM THE EDGE OF THE TRAIL TO THE TOP OF THE BLUFF, SAFETY RAILING WILL BE REQUIRED.
- 8. MINOR VARIATIONS TO THE ABOVE APPROACH ARE CURRENTLY BEING EVALUATED.



A TRAIL SECTION



B TRAIL SECTION

- GENERAL NOTES:
- 1. THIS SECTION APPLIES WHERE INDICATED BY THE  BELOW
 - 2. DASHED LINES INDICATE EXISTING ROAD, CURB OR SIDEWALK THAT WILL REMAIN. SOLID LINES INDICATE PROPOSED IMPROVEMENTS
 - 3. SURFACING IN THIS AREA LIKELY DRYLAND GRASS

Proposed Centennial Trail: Summit Blvd - Boone to A St