


**GENERAL NOTES:**

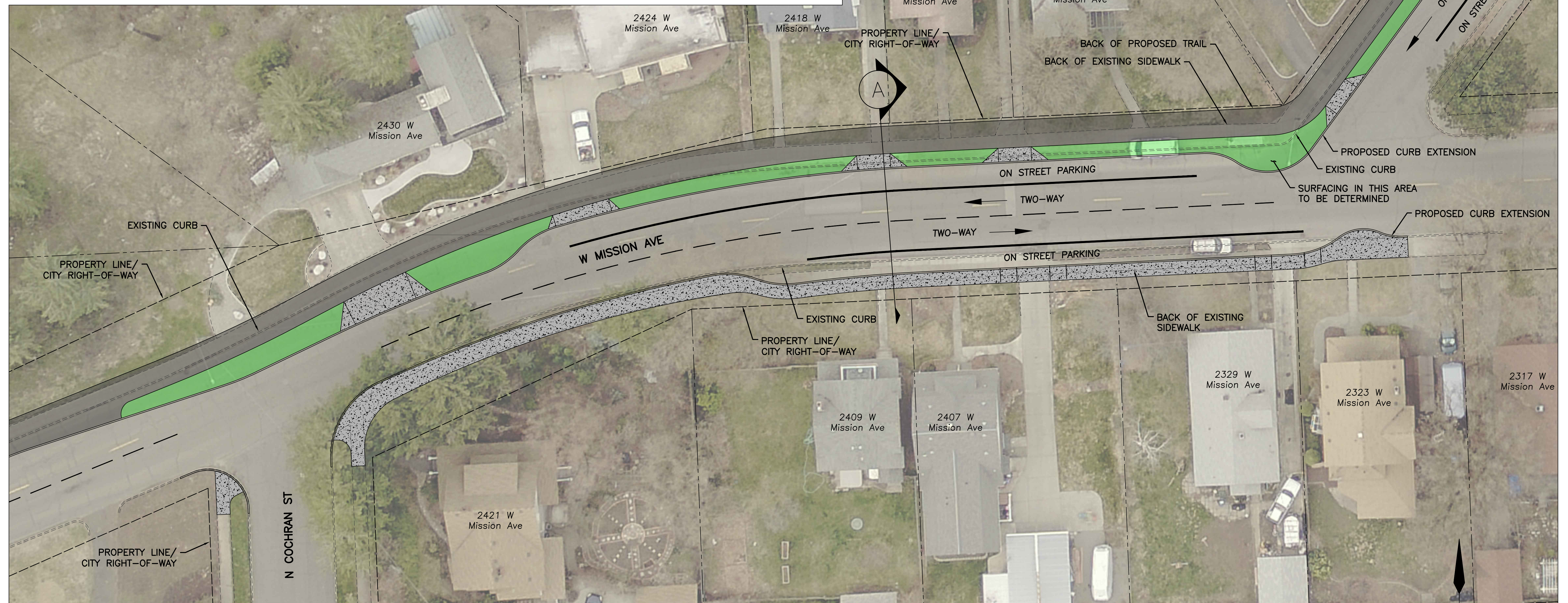
1. THIS SECTION APPLIES WHERE INDICATED BY THE  BELOW
2. DASHED LINES INDICATE EXISTING ROAD, CURB OR SIDEWALK THAT WILL REMAIN. SOLID LINES INDICATE PROPOSED IMPROVEMENTS
3. SURFACING IN THIS AREA TO BE DETERMINED
4. POTENTIAL STREET TREE IN BUFFER. LOCATIONS TO BE DETERMINED.

**EXPLANATION OF TRAIL LOCATION – MISSION AVE**

1. TRAIL LOCATION WAS SELECTED TO SIMULTANEOUSLY MINIMIZE IMPACTS TO ADJACENT FRONT YARDS AND PRESERVE ON STREET PARKING BOTH SIDES OF THE STREET.
2. RESIDENTS ON THIS SEGMENT INDICATED A PREFERENCE FOR NO PROPERTY ACQUISITION AND FOR PARKING TO RETAINED ON BOTH SIDES OF THE STREET.
3. NOTE THAT A 5' BUFFER BETWEEN THE ADJACENT ROADWAY AND THE TRAIL IS REQUIRED BY THE FUNDING AGENCY (ALTHOUGH LIMITED EXCEPTIONS ARE FEASIBLE).
4. TO ACCOMPLISH THESE THREE OBJECTIVES, THE PROPOSED BACK OF TRAIL MUST BE CLOSER TO THE ADJACENT RESIDENCE THAN THE BACK OF THE EXISTING SIDEWALK (BUT NOTE THAT IT IS STILL WITHIN EXISTING CITY RIGHT OF WAY).
5. MINOR VARIATIONS TO THE ABOVE APPROACH ARE CURRENTLY BEING EVALUATED.
6. **ALTERNATE CONFIGURATION** – REMOVE ON-STREET PARKING ON THE NORTH SIDE, SHIFT TRAIL SOUTH SUCH THAT THE BACK OF THE PROPOSED TRAIL APPROXIMATELY LINES UP WITH THE BACK OF THE EXISTING SIDEWALK



TRAIL SECTION



# Proposed Centennial Trail: Mission Ave - Cochran to West Point

