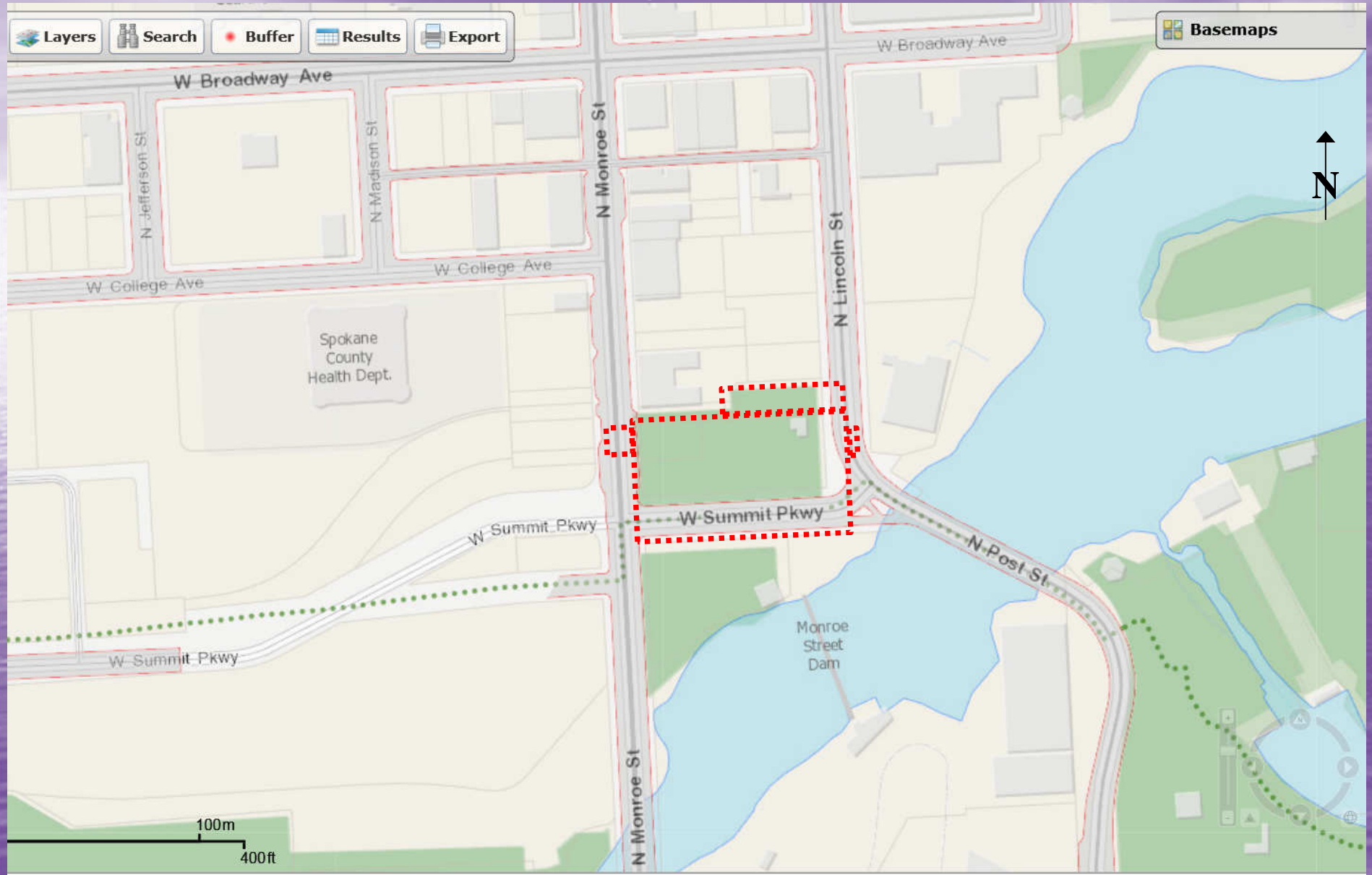


I04 Control Facility (Bridge CSO)

CSO=Combined Sewer Overflow



I04 Project Limits



What is a CSO Project?

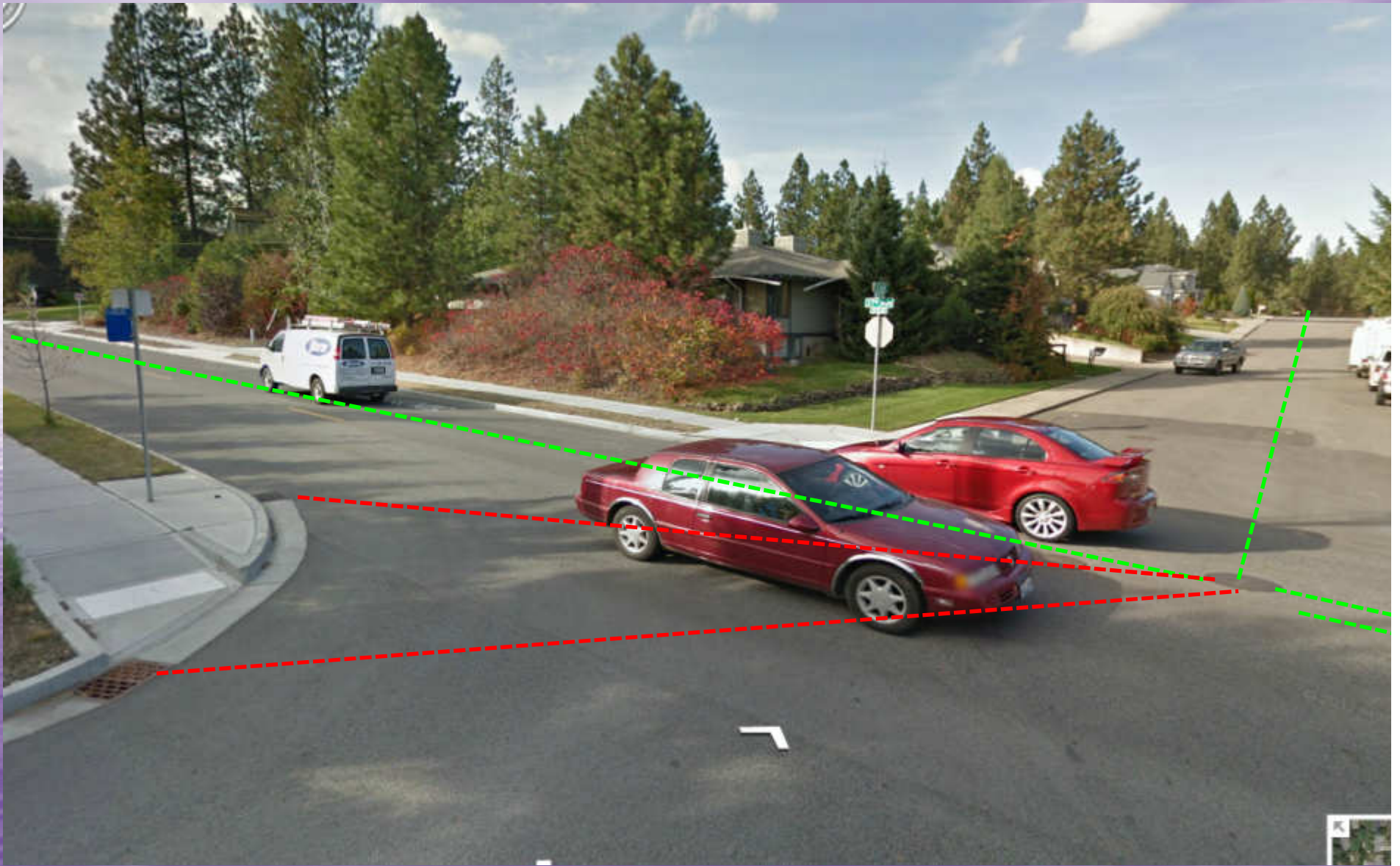


- Construct a 250' long by 50' wide underground storage tank for excess stormwater – combined sewage

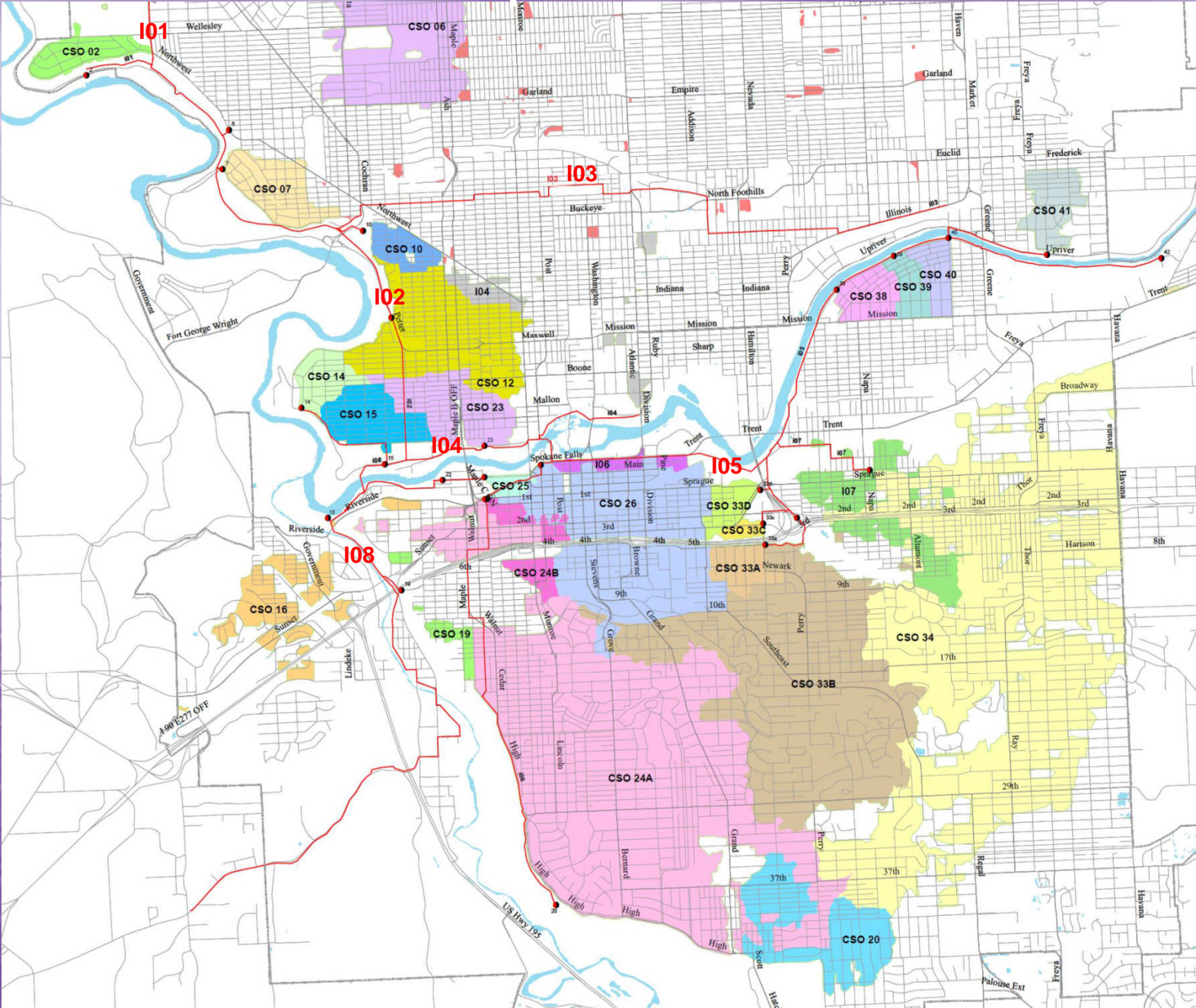
Combined Sewage Overflow Reduction

- Two types of sewer systems
 - Combined storm and sanitary
 - Separate storm and sanitary
 - Storm sewer (i.e. rainwater) discharges to river
 - Sanitary discharges to treatment plant
 - Spokane has both types of systems

Combined Sewer System



Interceptor Sewers



Combined Sewer Information

- Combined Sanitary & stormwater into the same pipe
- Combined sewage overwhelms combined sewers and the treatment plant during a storm
- To protect both, excess sewage is intentionally discharged to the river



Riverside Park Water Reclamation Facility
(RPWRF)

Why build a CSO Tank?

Wastewater Treatment Plant

- Compliance with EPA Clean Water Act and WAC 173-245
- CSO discharges only 1/year per outfall with EPA fines for non-compliance

I04 Project

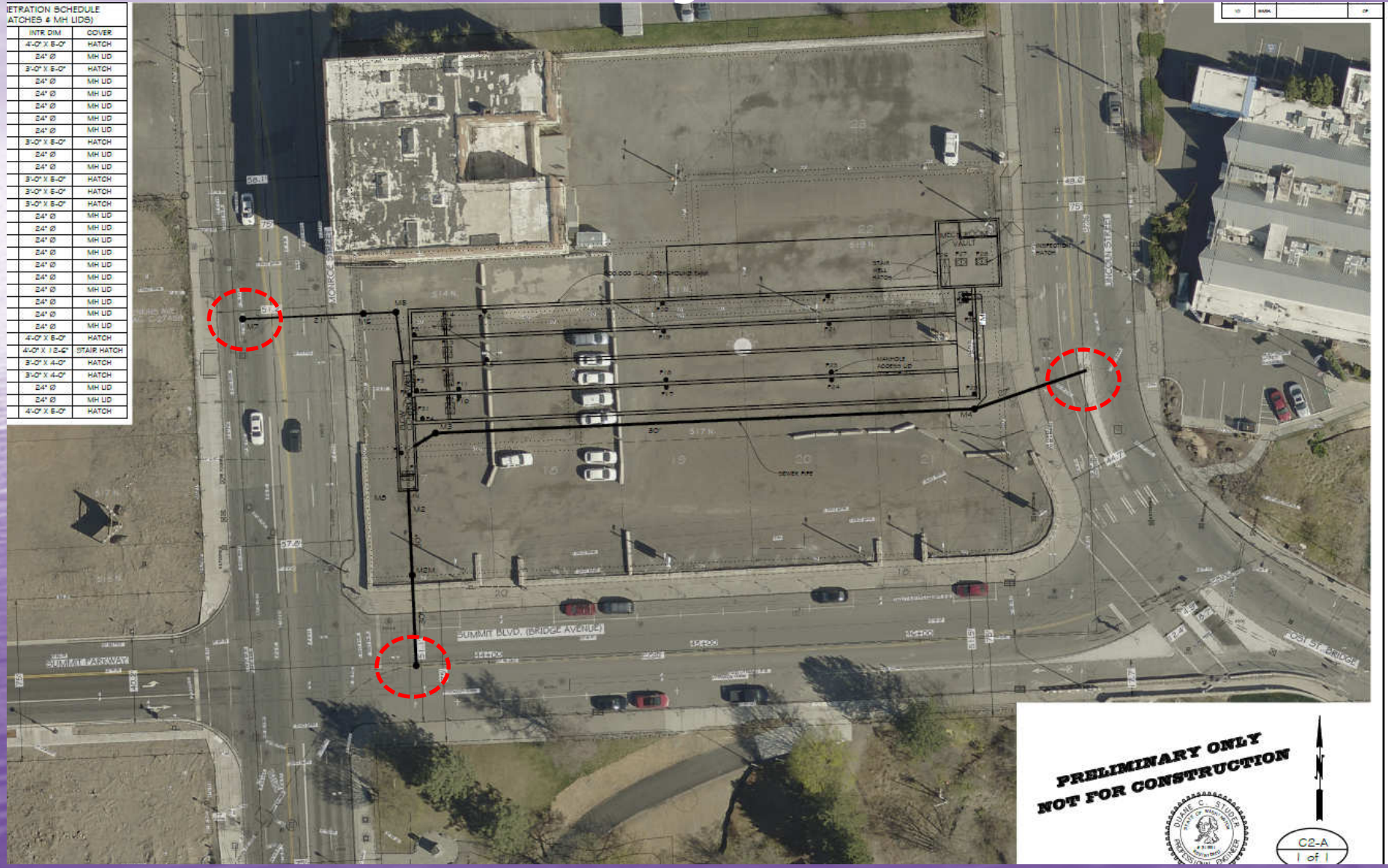
- New sewer trunk connections
 - Lincoln Street and
 - Monroe Street
 - Summit Blvd. (Bridge Ave.)



I04 Control Facility Layout

Connections to Existing Sewer – street impacts

INTEGRATION SCHEDULE ATCHES & MH LIDS)	
INTR. DIM	COVER
4'-0" X 8'-0"	HATCH
24" Ø	MH UD
3'-0" X 8'-0"	HATCH
24" Ø	MH UD
24" Ø	MH UD
24" Ø	MH UD
24" Ø	MH UD
24" Ø	MH UD
3'-0" X 8'-0"	HATCH
24" Ø	MH UD
24" Ø	MH UD
3'-0" X 8'-0"	HATCH
3'-0" X 8'-0"	HATCH
3'-0" X 8'-0"	HATCH
24" Ø	MH UD
24" Ø	MH UD
24" Ø	MH UD
24" Ø	MH UD
24" Ø	MH UD
24" Ø	MH UD
24" Ø	MH UD
24" Ø	MH UD
4'-0" X 8'-0"	HATCH
4'-0" X 12'-0"	STAIR HATCH
3'-0" X 4'-0"	HATCH
3'-0" X 4'-0"	HATCH
24" Ø	MH UD
24" Ø	MH UD
4'-0" X 8'-0"	HATCH



PRELIMINARY ONLY
NOT FOR CONSTRUCTION

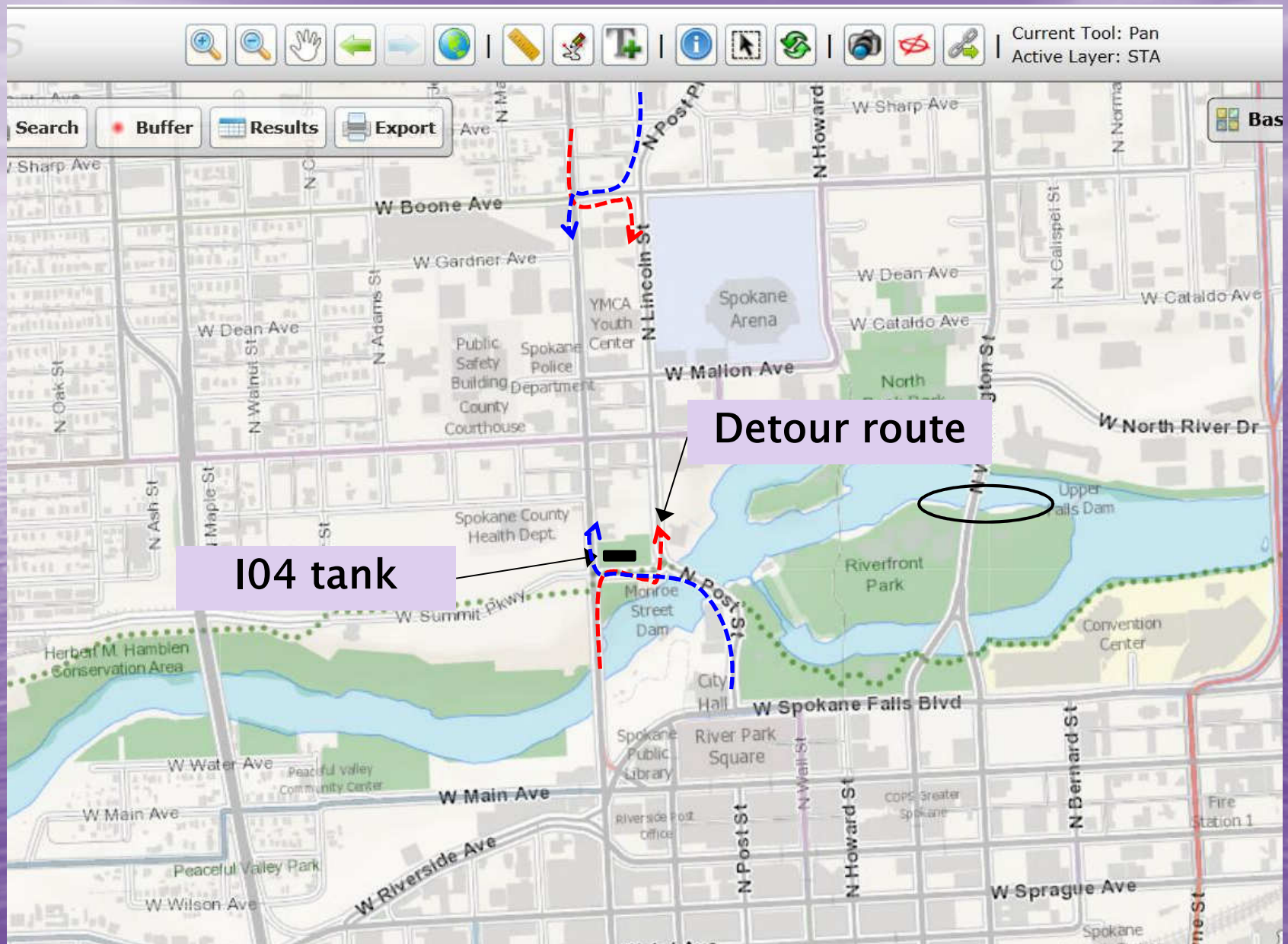


I04 Project

- New street pavement where sewer trunks are connected in the streets
- New sidewalk in some areas



Traffic Detour During Construction



I04 Project – Shoreline Conditional Use Permit



I04 Construction Schedule

Schedule

- Est. 16-20 month duration (entire project)
- Beginning Spring 2016
- Sewer Connections in Monroe, Lincoln:
 - Fall 2016 or Spring 2017

Questions?

Contact:

Julie Happy 625-7773

jhappy@spokanecity.org

Website for more CSO information:

<http://www.spokanewastewater.org>