



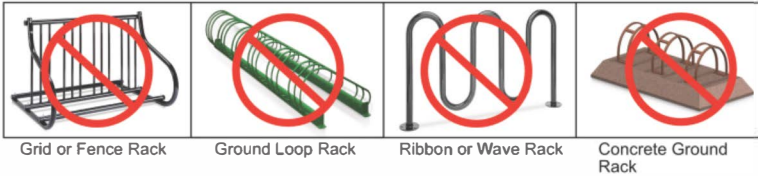
City of Spokane Bicycle Parking

This informational sheet provides a brief overview of the bicycle parking standards for new development, change of use, and major renovations. For further information and detailed requirements on the number of spaces that might be required for your development please visit <https://my.spokanecity.org/smc/> and review SMC 17C.230.200.

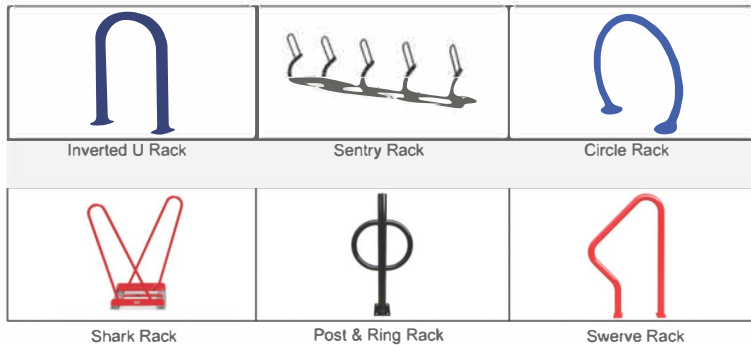
SHORT-TERM BICYCLE PARKING

- Racks may be on the sidewalk or on-site.
- Must be within 50' of main entrance.
- Cannot interfere with the opening of doors.
- Rack must allow for two points of contact with bicycle.
- Bicycle racks must consider spacing between other essential assets within public right of way (e.g. fire hydrants, street trees, mail boxes, etc.).

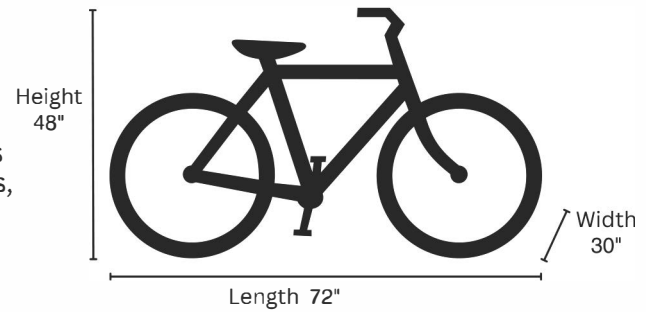
NOT ALLOWED: Bike racks that do not have 2 points of contact



ALLOWED: Bike Racks that have 2 points of contact



Standard Bike Dimensions



LONG-TERM BICYCLE PARKING

- Long-term bicycle parking includes bike lockers, enclosures, and bike rooms that are secured.
- Long-term bicycle parking must be covered to protect the bicycle from weather.
- The storage area must be on-site or within 300 feet of the site.
- Includes spacing requirements such as between racks, walls, or obstructions and access aisles for maneuverability.
- 25% of racks must be horizontal (same rack type as short-term parking) to accommodate various bike types and user abilities.
- Residential in-unit long-term bicycle racks do not count towards fulfilling the long-term bicycle parking requirements.
- A garage counts as 1 long-term bicycle parking space.

VEHICLE PARKING SUBSTITUTION

- Bicycle parking may substitute for up to 25% of required vehicle parking.
- For every 4 short-term bicycle parking spaces and 1 long-term bicycle parking spaces, the required vehicle parking is reduced by 1 space.
- Residential vehicle parking may only be substituted with long-term bicycle parking.
- Required bicycle parking spaces may be used to substitute for vehicle parking spaces.

Example: For a 100 unit 2-bedroom apartment requiring 100 vehicle parking spaces and 50 long-term bicycle parking spaces, up to 25 of the required 100 vehicle parking spaces may be substituted with 25 of the required long-term bicycle parking spaces. No additional bicycle storage would be needed to take advantage of the incentive.

Access Aisle Spacing

