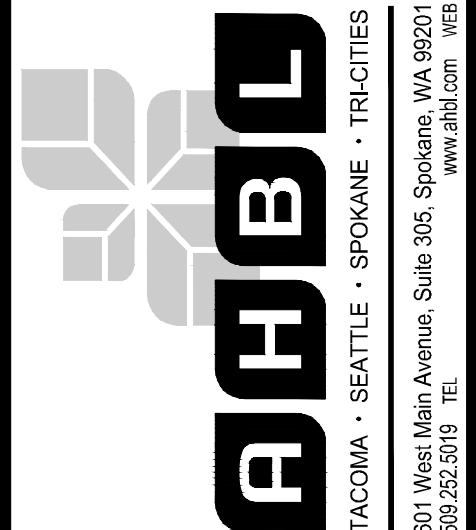


CITY OF SPOKANE
PARKS & RECREATION



TACOMA • SEATTLE • SPOKANE • TRICITIES
801 West Main Avenue, Suite 305, Spokane, WA 99201
509.252.5019 TEL. www.ahbl.com WEB

MAKE BEACON HILL PUBLIC - PHASE 2
TRAILHEADS

808 WEST SPOKANE FALLS BOULEVARD
SPOKANE, WA 99201

OVERALL SITE 1 PLAN - JOHN H.
SHIELDS PARK

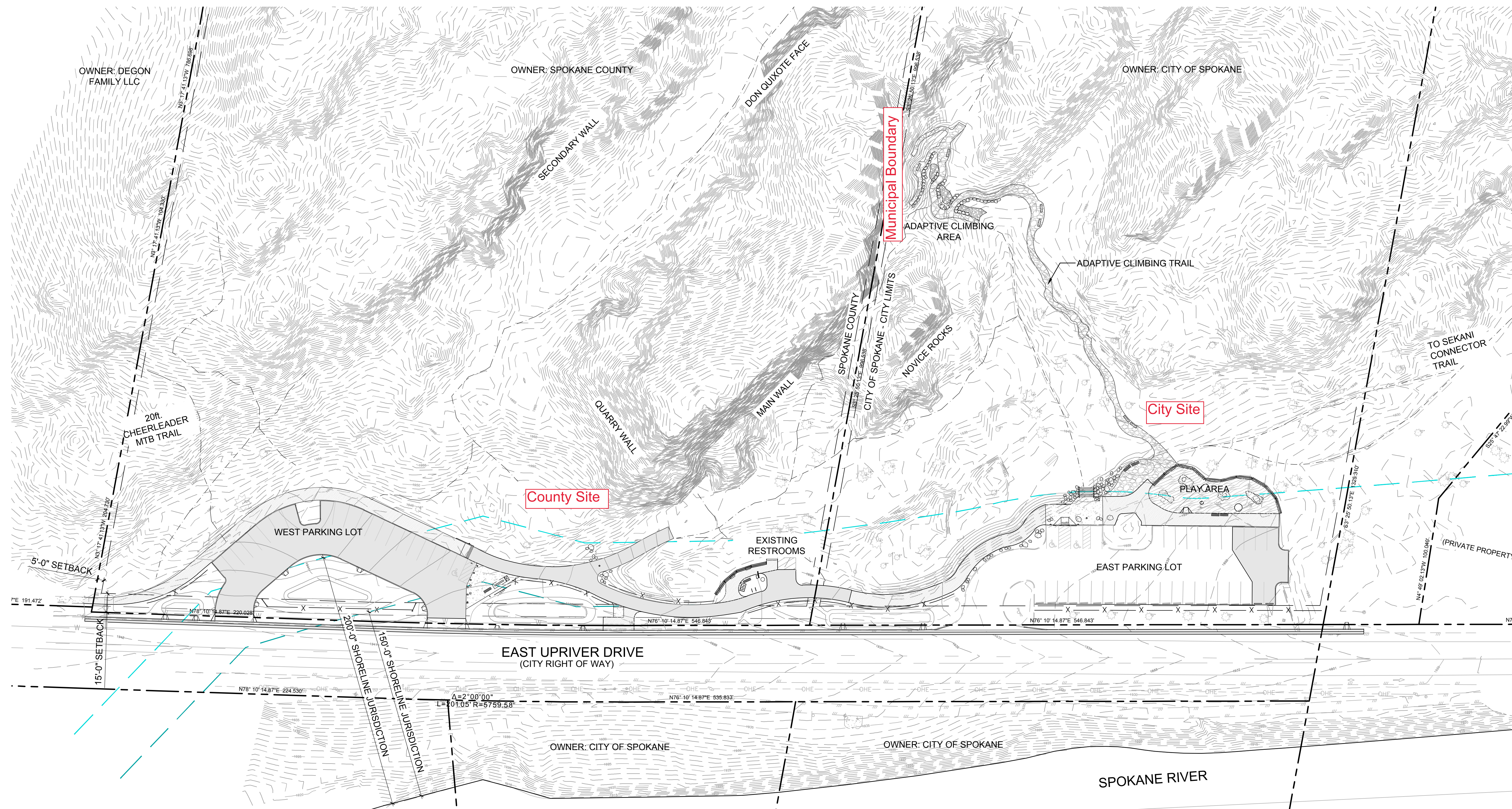
BAR IS ONE INCH ON ORIGINAL DRAWINGS. IF NOT ONE INCH ON THIS SHEET, ADJUST SCALES ACCORDINGLY

DATE: 2024.02.09
DRAWN BY: HMS
CHECKED BY: KCC/CDA
PROJECT NO: 2230263.40

REVISION	
△	
△	
△	
△	

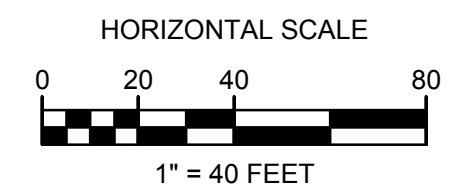
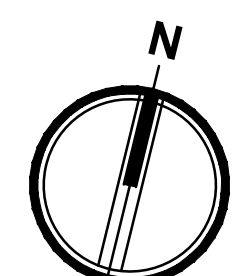
SHEET ___ OF ___

G1.01

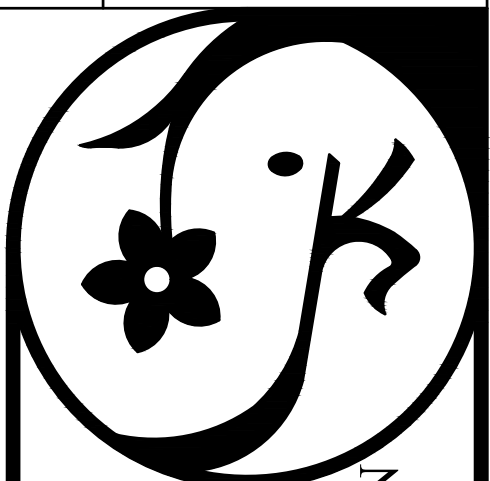


SYMBOL LEGEND

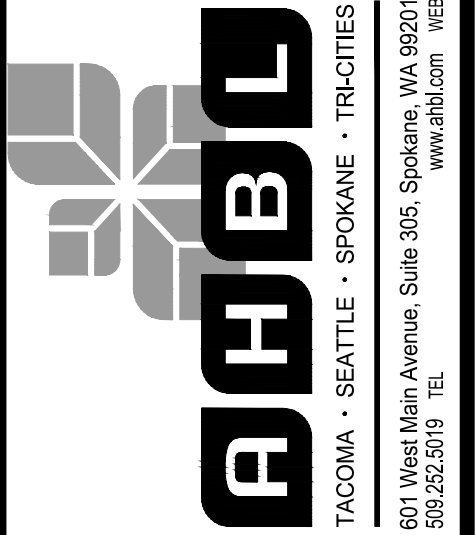
PROPERTY LINE / R.O.W.	---
SETBACK LINE	---
200' SHORELINE JURISDICTION	---
150' SHORELINE BUFFER	---
SPLIT RAIL FENCE	-x-x-x-x-
ASPHALT PEDESTIAN PATHWAY	[Pattern]
ASPHALT VEHICULAR PAVEMENT	[Pattern]
CONCRETE PAVEMENT	[Pattern]
ADAPTIVE CLIMBING TRAIL	[Pattern]
PLAYGROUND PROTECTIVE SURFACING	[Pattern]



Know what's below.
Call before you dig.



CITY OF SPOKANE
PARKS & RECREATION



TACOMA - SEATTLE - SPOKANE - TRICITIES
808 West Falls Avenue, Suite 305, Spokane, WA 99201
509.325.9119
www.ahbl.com

MAKE BEACON HILL PUBLIC - PHASE 2
TRAILHEADS

808 WEST SPOKANE FALLS BOULEVARD
SPOKANE, WA 99201

SITE 1 - SITE PLAN EAST

BAR IS ONE INCH ON ORIGINAL
DRAWINGS. IF NOT ONE INCH ON
THIS SHEET, ADJUST SCALES
ACCORDINGLY

DATE: 2024.02.09

DRAWN BY: SBP

CHECKED BY: SMB

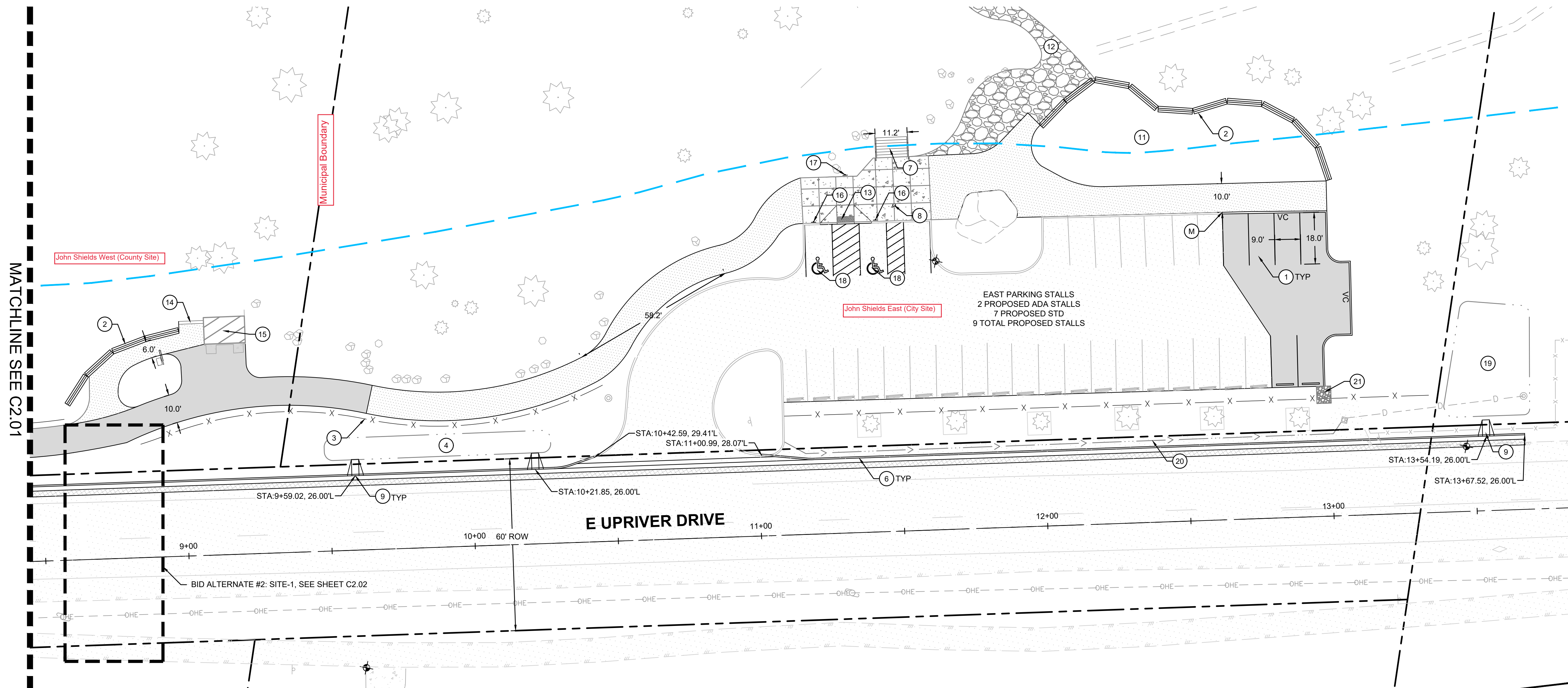
PROJECT NO: 230263.10

REVISION

1	
2	
3	
4	

SHEET ___ OF ___

C2.01



SITE PLAN NOTES

- SEE SHEET G0.02 FOR GENERAL SITE PLAN NOTES
- 20 STANDARD STALLS AND 1 ADA STALL PROPOSED ON WEST SIDE OF PROJECT SITE. 7 STANDARD STALLS PROPOSED AND 2 ADA STALLS PROPOSED ON EAST SIDE OF PROJECT SITE.

- KEYNOTES**
- 1 STANDARD PARKING STALL
 - 2 CONCRETE JERSEY BARRIERS. SEE LANDSCAPE PLANS FOR DETAILS
 - 3 FENCE SEE LANDSCAPE PLANS FOR DETAILS
 - 4 BIO-INFILTRATION POND
 - 5 PEDESTRIAN CROSSING WITH FLASHING BEACON PART OF BID ALTERNATE #2: SITE-1
 - 6 CURB AND GUTTER PER CITY OF SPOKANE STD F-106
 - 7 (8) 6" RISERS SEE LANDSCAPE PLANS FOR DETAILS
 - 8 REMOVABLE BOLLARD. SEE LANDSCAPE PLANS FOR DETAILS
 - 9 CURB DROP INLET PER CITY OF SPOKANE STD F-109
 - 10 WHEEL STOP
 - 11 BOULDERING PLAYGROUND SEE LANDSCAPE PLANS FOR DETAILS
 - 12 ADAPTIVE CLIMBING ACCESS PATH. SEE LANDSCAPE PLANS FOR DETAILS
 - 13 CURB RAMP TYPE 1 PER CITY OF SPOKANE F-105
 - 14 (2) 3" RISERS SEE LANDSCAPE PLANS FOR DETAILS
 - 15 EXISTING RESTROOM
 - 16 "VAN ACCESSIBLE" SIGN PER CITY OF SPOKANE STD G-80A
 - 17 "NO PARKING ANYTIME" SIGN PER CITY OF SPOKANE STD G-80A
 - 18 BARRIER FREE PARKING STALL
 - 19 EXISTING STORM POND
 - 20 SWALE DITCH OUTFALL INTO EXISTING STORM POND
 - 21 RIP RAP FOR EROSION CONTROL MEASURES

SURFACING LEGEND

	ASPHALT PATH	2
	HMA PAVEMENT	1
	ASPHALT PATCH 5' HMA OVER 7' CSBC PER COS STD W-101A	3
	VERTICAL CURB PER COS STD F-106	VC

