



**CURVE TABLE**

CHORD	ANGLE	CHORD	ANGLE
1.00	180.00	1.00	180.00
2.00	90.00	2.00	90.00
3.00	60.00	3.00	60.00
4.00	45.00	4.00	45.00
5.00	36.00	5.00	36.00
6.00	30.00	6.00	30.00
7.00	25.71	7.00	25.71
8.00	22.50	8.00	22.50
9.00	20.00	9.00	20.00
10.00	18.00	10.00	18.00
11.00	16.41	11.00	16.41
12.00	15.00	12.00	15.00
13.00	13.75	13.00	13.75
14.00	12.64	14.00	12.64
15.00	11.66	15.00	11.66
16.00	10.80	16.00	10.80
17.00	10.00	17.00	10.00
18.00	9.27	18.00	9.27
19.00	8.61	19.00	8.61
20.00	8.00	20.00	8.00
21.00	7.44	21.00	7.44
22.00	6.93	22.00	6.93
23.00	6.46	23.00	6.46
24.00	6.03	24.00	6.03
25.00	5.64	25.00	5.64
26.00	5.28	26.00	5.28
27.00	4.95	27.00	4.95
28.00	4.65	28.00	4.65
29.00	4.37	29.00	4.37
30.00	4.12	30.00	4.12
31.00	3.89	31.00	3.89
32.00	3.68	32.00	3.68
33.00	3.49	33.00	3.49
34.00	3.32	34.00	3.32
35.00	3.16	35.00	3.16
36.00	3.02	36.00	3.02
37.00	2.89	37.00	2.89
38.00	2.77	38.00	2.77
39.00	2.66	39.00	2.66
40.00	2.56	40.00	2.56
41.00	2.47	41.00	2.47
42.00	2.38	42.00	2.38
43.00	2.30	43.00	2.30
44.00	2.22	44.00	2.22
45.00	2.15	45.00	2.15
46.00	2.08	46.00	2.08
47.00	2.01	47.00	2.01
48.00	1.95	48.00	1.95
49.00	1.89	49.00	1.89
50.00	1.84	50.00	1.84

**RADIAL BEARINGS**

LINE	DIRECTION	DISTANCE
1	N 89° 59' 09" E	127.88
2	N 00° 41' 42" W	119.60
3	N 89° 56' 41" E	436.30
4	N 00° 02' 21" E	134.87
5	N 89° 57' 16" W	200.11
6	N 00° 02' 21" E	134.87
7	N 89° 56' 41" E	436.30
8	N 00° 41' 42" W	119.60
9	N 89° 59' 09" E	127.88

**TANGENT TABLE**

LINE	DIRECTION	DISTANCE
1	N 89° 59' 09" E	127.88
2	N 00° 41' 42" W	119.60
3	N 89° 56' 41" E	436.30
4	N 00° 02' 21" E	134.87
5	N 89° 57' 16" W	200.11
6	N 00° 02' 21" E	134.87
7	N 89° 56' 41" E	436.30
8	N 00° 41' 42" W	119.60
9	N 89° 59' 09" E	127.88

**LEGEND**

- FIND MONUMENT (1/2" REBAR W/ YPC STAMPED PER 18091/33126 PER ROS, BOOK 78 OF SURVEYS, P. 57-60. (UNLESS OTHERWISE NOTED)
- SET STANDARD CITY MONUMENT
- SET 1/2" REBAR W/ YPC STAMPED "PE 18091/33126" (UNLESS OTHERWISE NOTED) AS:
- ANGLE POINT IN BOUNDARY
- LOT CORNER
- PRIVATE ROAD CENTRELINE MONUMENT
- W-3447 STREET ADDRESS

(NOTE: INDIVIDUAL LOT CORNERS AND C/L MONUMENTS TO BE SET AFTER INSTALLATION OF ROAD & UTILITY IMPROVEMENTS)

F.Y. - FRONT YARD BUILDING SETBACK  
R.Y. - REAR YARD BUILDING SETBACK

(A) RECORD INFORMATION PER R.O.S. RECORDED IN BOOK 78 OF SURVEYS, P. 57-60.

**SURVEYOR'S NOTES**

- THE AREA OF THE SUBDIVISION IS 18.15 ACRES.
- SEE ROS RECORDED IN BOOK 78 OF SURVEYS, P. 57-60 FOR A COMPLETE DESCRIPTION OF THE REBAR AND UTILITY IMPROVEMENTS.
- REBAR AND UTILITY IMPROVEMENTS TO BE SET AFTER INSTALLATION OF ROAD & UTILITY IMPROVEMENTS.
- ALBION HEIGHTS ADDITIONS & SUBDIVISION OF W/2 OF SECTION 26.

**CITY DATUM**

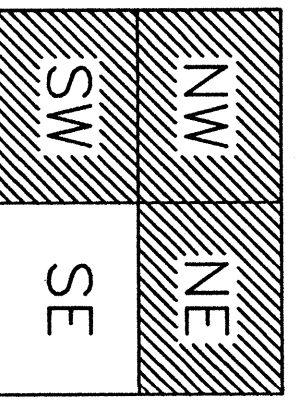
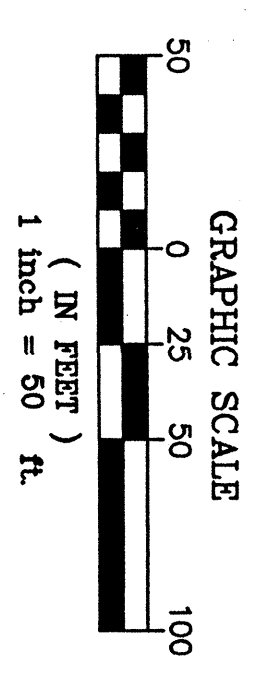
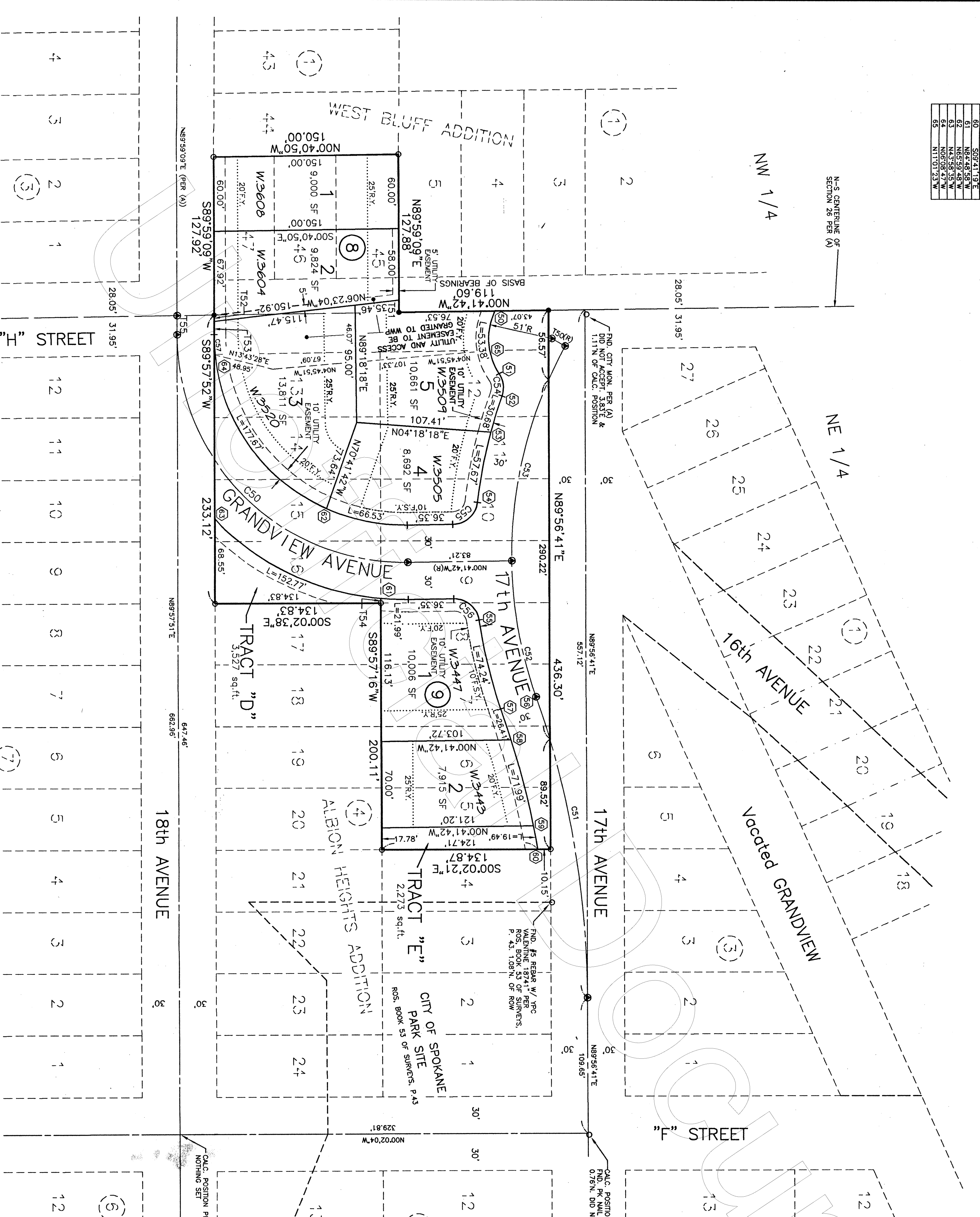
DATUM PLANE FOR ELEVATIONS SHALL BE CITY OF SPOKANE DATUM.

**BASIS OF BEARINGS**

THE BEARING OF N00°41'42"W ON THE NORTH-SOUTH MERIDIAN OF 1897, AS SHOWN IN BOOK 78 OF SURVEYS, P. 57-60, WAS USED AS THE BASIS OF BEARINGS FOR THIS MAP.

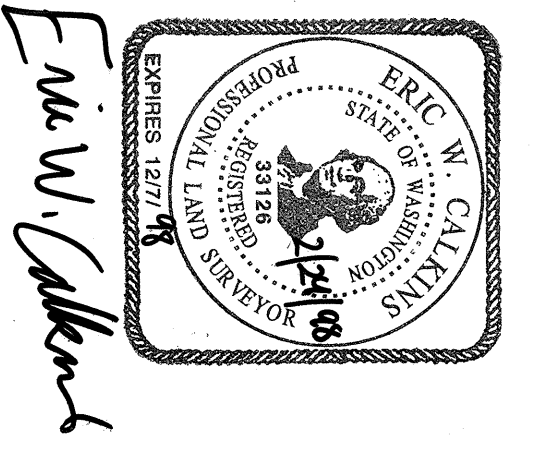
**ACCURACY STATEMENT**

THIS SURVEY WAS PERFORMED USING A TOPCON GTS 303 FIVE-SECOND THEODOLITE AND ELECTRONIC DISTANCE METER. FIELD TRAVERSE METHODS USED WERE IN ACCORDANCE WITH WAC 352-130-90 SECTION C.



FINAL PLAT OF  
WESTRIDGE ADDITION  
OF THE WESTRIDGE PLANNED UNIT DEVELOPMENT  
BEING IN PART A REPLAT OF PORTIONS OF  
WEST BLUFF & ALBION HEIGHTS ADDITIONS,  
LOCATED IN THE NW 1/4 & THE NE 1/4  
& A SUBDIVISION OF UNPLATTED PORTIONS  
OF THE NE 1/4 OF THE SW 1/4  
ALL IN SECTION 26, T.25N., R.42E., W.M.  
CITY OF SPOKANE  
SPOKANE COUNTY, WASHINGTON  
NOVEMBER 1997

**IRE INLAND PACIFIC ENGINEERING**  
707 West 7th - Suite 200  
Spokane, WA 99204  
(509) 458-6840  
FAX: (509) 458-6844



I do hereby certify that all required taxes for which the property included within this subdivision may be liable have been duly paid, satisfied, or discharged this 19 day of May 1998.

*Janice M. Johnston*  
Spokane County Treasurer by Deputy

Examined and approved this 19th day of May 1998.

*Deborah Ann Fourn*  
Spokane County Assessor by Deputy

Examined and approved this 11th day of May 1998.

*James C. Kline*  
City of Spokane Attorney

Examined and approved this 14th day of May 1998.

*Val J. Kline*  
City of Spokane Treasurer

Approved as to compliance with engineering standards this 7th day of May 1998.

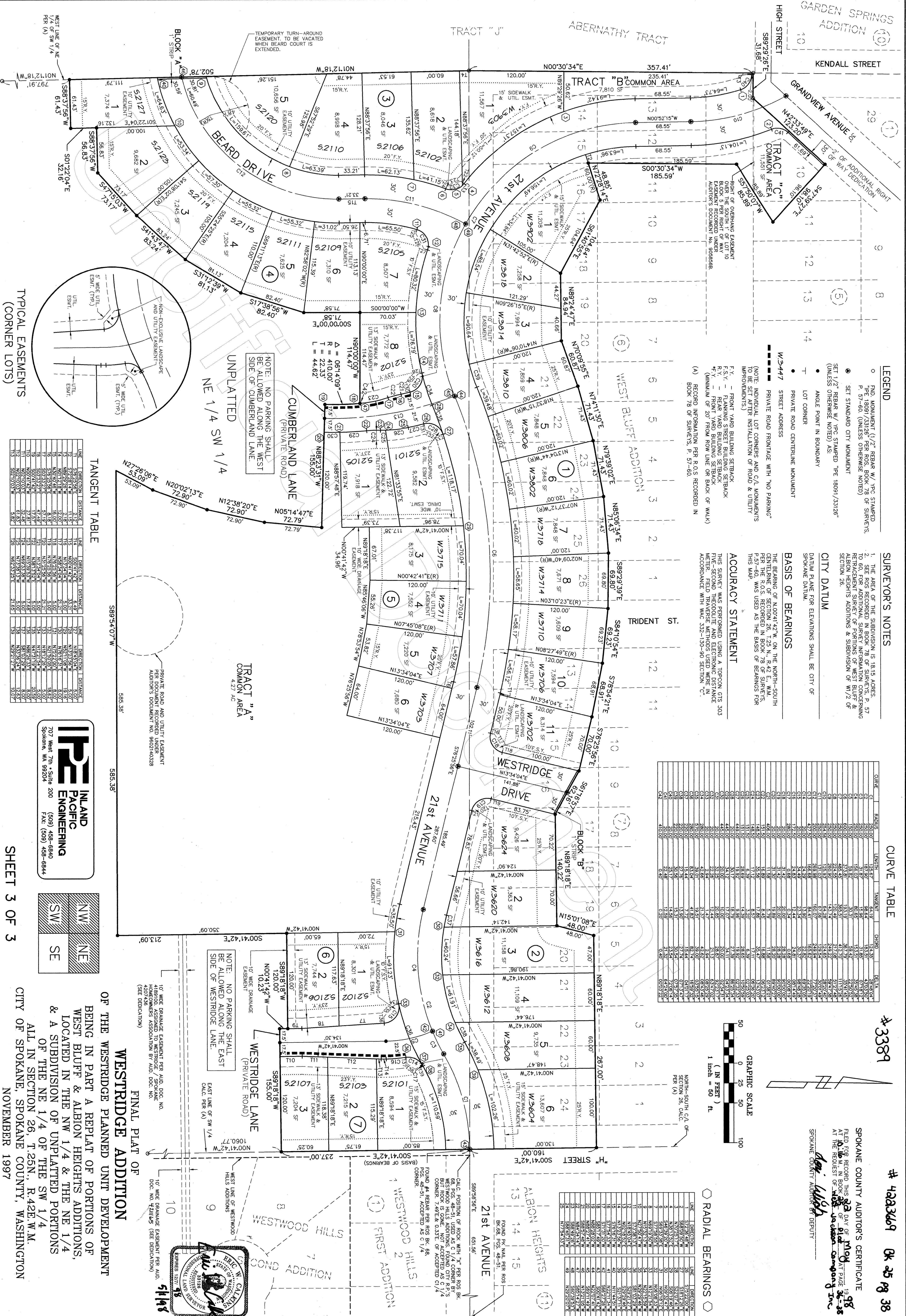
*John R. Starnes*  
City Engineer

Approved as to compliance with the requirements of Subdivision regulations and approved preliminary plat this 12th day of May 1998.

*Donnell A. Carlson*  
City of Spokane Subdivision Administrator

Approved as to compliance with the requirements of Subdivision regulations and approved preliminary plat this 12th day of May 1998.

*Eric W. Calkins*  
Spokane County Auditor by Deputy



**LEGEND**

- FIND MONUMENT (1/2" REBAR W/ YPC STAMPED "PE 18091/3326" PER ROS, BOOK 78 OF SURVEYS, P. 57-60) (UNLESS OTHERWISE NOTED)
- SET STANDARD CITY MONUMENT
- SET 1/2" REBAR W/ YPC STAMPED "PE 18091/3326" (UNLESS OTHERWISE NOTED) AS:
- ANGLE POINT IN BOUNDARY
- LOT CORNER
- PRIVATE ROAD CENTERLINE MONUMENT
- STREET ADDRESS
- W-3447 PRIVATE ROAD FRONTAGE WITH "NO PARKING"

(NOTE: INDIVIDUAL LOT CORNERS AND C/L MONUMENTS IMPROVED AFTER INSTALLATION OF ROAD & UTILITY EASEMENTS)

F.Y. - FRONT YARD BUILDING SETBACK  
F.S.Y. - FLANKING STREET BUILDING SETBACK  
R.Y. - REAR YARD BUILDING SETBACK  
MINIMUM OF 20' FROM ROW LINE OR BACK OF WALK

(A) RECORD INFORMATION PER ROS RECORDED IN BOOK 78 OF SURVEYS, P. 57-60

**SURVEYOR'S NOTES**

1. THE AREA OF THE SUBDIVISION IS 18.15 ACRES.
2. SEE ROS RECORDED IN BOOK 78 OF SURVEYS, P. 57-60 FOR ADDITIONAL SURVEY INFORMATION CONCERNING REAR YARD BUILDING SETBACKS OF WEST BLUFF & WESTWOOD HILLS ADDITIONS & SUBDIVISION OF W/1/4 OF SECTION 26.
3. DATUM PLANE FOR ELEVATIONS SHALL BE CITY OF SPOKANE DATUM.

**BAISIS OF BEARINGS**

THE BEARING OF N00°41'42" W, ON THE NORTH-SOUTH CENTERLINE OF SECTION 26, T.25 N., R.42 E., W.M., PER ROS, RECORDED IN BOOK 78 OF SURVEYS, P. 57-60, WAS USED AS THE BASIS OF BEARINGS FOR THIS MAP.

**ACCURACY STATEMENT**

THIS SURVEY WAS PERFORMED USING A TOPCON, GTS 303 TOTAL STATION WITH AN ELECTRONIC DISTANCE METER. FIELD TRAVERSE METHODS USED WERE IN ACCORDANCE WITH WAC 332-130-90 SECTION "C".

**CURVE TABLE**

CHORD	RADIUS	LENGTH	TANGENT	CHORD BEARING	BEARING
1	200.00	181.90	68.84	N81°51'51"E	43°03'52"
2	200.00	181.90	68.84	N81°51'51"E	43°03'52"
3	200.00	181.90	68.84	N81°51'51"E	43°03'52"
4	200.00	181.90	68.84	N81°51'51"E	43°03'52"
5	200.00	181.90	68.84	N81°51'51"E	43°03'52"
6	200.00	181.90	68.84	N81°51'51"E	43°03'52"
7	200.00	181.90	68.84	N81°51'51"E	43°03'52"
8	200.00	181.90	68.84	N81°51'51"E	43°03'52"
9	200.00	181.90	68.84	N81°51'51"E	43°03'52"
10	200.00	181.90	68.84	N81°51'51"E	43°03'52"
11	200.00	181.90	68.84	N81°51'51"E	43°03'52"
12	200.00	181.90	68.84	N81°51'51"E	43°03'52"
13	200.00	181.90	68.84	N81°51'51"E	43°03'52"
14	200.00	181.90	68.84	N81°51'51"E	43°03'52"
15	200.00	181.90	68.84	N81°51'51"E	43°03'52"
16	200.00	181.90	68.84	N81°51'51"E	43°03'52"
17	200.00	181.90	68.84	N81°51'51"E	43°03'52"
18	200.00	181.90	68.84	N81°51'51"E	43°03'52"
19	200.00	181.90	68.84	N81°51'51"E	43°03'52"
20	200.00	181.90	68.84	N81°51'51"E	43°03'52"
21	200.00	181.90	68.84	N81°51'51"E	43°03'52"
22	200.00	181.90	68.84	N81°51'51"E	43°03'52"
23	200.00	181.90	68.84	N81°51'51"E	43°03'52"
24	200.00	181.90	68.84	N81°51'51"E	43°03'52"
25	200.00	181.90	68.84	N81°51'51"E	43°03'52"
26	200.00	181.90	68.84	N81°51'51"E	43°03'52"
27	200.00	181.90	68.84	N81°51'51"E	43°03'52"
28	200.00	181.90	68.84	N81°51'51"E	43°03'52"
29	200.00	181.90	68.84	N81°51'51"E	43°03'52"
30	200.00	181.90	68.84	N81°51'51"E	43°03'52"
31	200.00	181.90	68.84	N81°51'51"E	43°03'52"
32	200.00	181.90	68.84	N81°51'51"E	43°03'52"
33	200.00	181.90	68.84	N81°51'51"E	43°03'52"
34	200.00	181.90	68.84	N81°51'51"E	43°03'52"
35	200.00	181.90	68.84	N81°51'51"E	43°03'52"
36	200.00	181.90	68.84	N81°51'51"E	43°03'52"
37	200.00	181.90	68.84	N81°51'51"E	43°03'52"
38	200.00	181.90	68.84	N81°51'51"E	43°03'52"
39	200.00	181.90	68.84	N81°51'51"E	43°03'52"
40	200.00	181.90	68.84	N81°51'51"E	43°03'52"
41	200.00	181.90	68.84	N81°51'51"E	43°03'52"
42	200.00	181.90	68.84	N81°51'51"E	43°03'52"
43	200.00	181.90	68.84	N81°51'51"E	43°03'52"
44	200.00	181.90	68.84	N81°51'51"E	43°03'52"
45	200.00	181.90	68.84	N81°51'51"E	43°03'52"
46	200.00	181.90	68.84	N81°51'51"E	43°03'52"
47	200.00	181.90	68.84	N81°51'51"E	43°03'52"
48	200.00	181.90	68.84	N81°51'51"E	43°03'52"
49	200.00	181.90	68.84	N81°51'51"E	43°03'52"



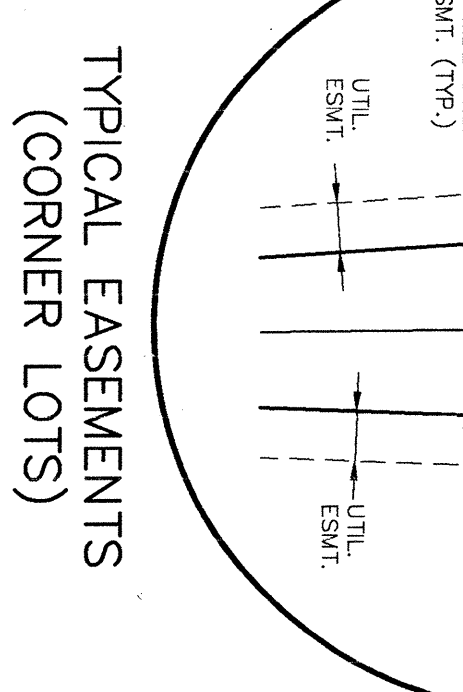
**FINAL PLAT OF WESTRIDGE ADDITION**

OF THE WESTRIDGE PLANNED UNIT DEVELOPMENT BEING IN PART A REPLAT OF PORTIONS OF WEST BLUFF & ALBION HEIGHTS ADDITIONS, LOCATED IN THE NW 1/4 & THE NE 1/4 OF THE NE 1/4 OF THE SW 1/4 OF SECTION 26, T.25N., R.42E., W.M. ALL IN SECTION 26, T.25N., R.42E., W.M. CITY OF SPOKANE, SPOKANE COUNTY, WASHINGTON NOVEMBER 1997

**SPokane County Auditor's Certificate**

FILED FOR RECORD THIS 22 DAY OF May 1998 AT THE RECORDER OF WEST JORDAN COMPANY INC. SPOKANE COUNTY AUDITOR DEPUTY

*Dee L. Ladd*



**TANGENT TABLE**

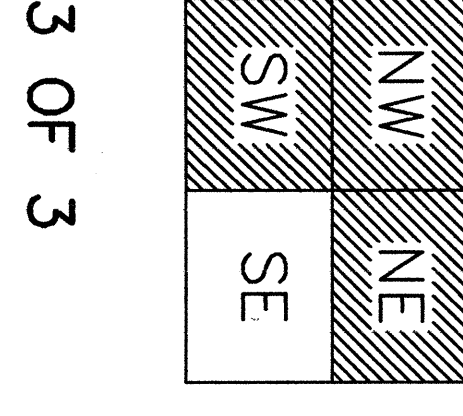
LINE	DIRECTION	DISTANCE
1	S79°54'42"E	2.18
2	S89°54'07"W	5.82
3	N12°38'20"E	72.90
4	N20°12'13"E	72.90
5	N27°26'06"E	53.09
6	N05°14'47"E	72.79
7	N12°38'20"E	72.90
8	N20°12'13"E	72.90
9	N27°26'06"E	53.09
10	N05°14'47"E	72.79
11	N12°38'20"E	72.90
12	N20°12'13"E	72.90
13	N27°26'06"E	53.09
14	N05°14'47"E	72.79
15	N12°38'20"E	72.90
16	N20°12'13"E	72.90
17	N27°26'06"E	53.09
18	N05°14'47"E	72.79
19	N12°38'20"E	72.90
20	N20°12'13"E	72.90
21	N27°26'06"E	53.09
22	N05°14'47"E	72.79
23	N12°38'20"E	72.90
24	N20°12'13"E	72.90
25	N27°26'06"E	53.09
26	N05°14'47"E	72.79
27	N12°38'20"E	72.90
28	N20°12'13"E	72.90
29	N27°26'06"E	53.09
30	N05°14'47"E	72.79

**TANGENT TABLE**

LINE	DIRECTION	DISTANCE
1	S79°54'42"E	2.18
2	S89°54'07"W	5.82
3	N12°38'20"E	72.90
4	N20°12'13"E	72.90
5	N27°26'06"E	53.09
6	N05°14'47"E	72.79
7	N12°38'20"E	72.90
8	N20°12'13"E	72.90
9	N27°26'06"E	53.09
10	N05°14'47"E	72.79
11	N12°38'20"E	72.90
12	N20°12'13"E	72.90
13	N27°26'06"E	53.09
14	N05°14'47"E	72.79
15	N12°38'20"E	72.90
16	N20°12'13"E	72.90
17	N27°26'06"E	53.09
18	N05°14'47"E	72.79
19	N12°38'20"E	72.90
20	N20°12'13"E	72.90
21	N27°26'06"E	53.09
22	N05°14'47"E	72.79
23	N12°38'20"E	72.90
24	N20°12'13"E	72.90
25	N27°26'06"E	53.09
26	N05°14'47"E	72.79
27	N12°38'20"E	72.90
28	N20°12'13"E	72.90
29	N27°26'06"E	53.09
30	N05°14'47"E	72.79

**IPE INLAND PACIFIC ENGINEERING**

707 West 7th • Suite 200  
Spokane, WA 99204  
FAX: (509) 458-6844



**SHEET 3 OF 3**

**CITY OF SPOKANE, SPOKANE COUNTY, WASHINGTON NOVEMBER 1997**

