



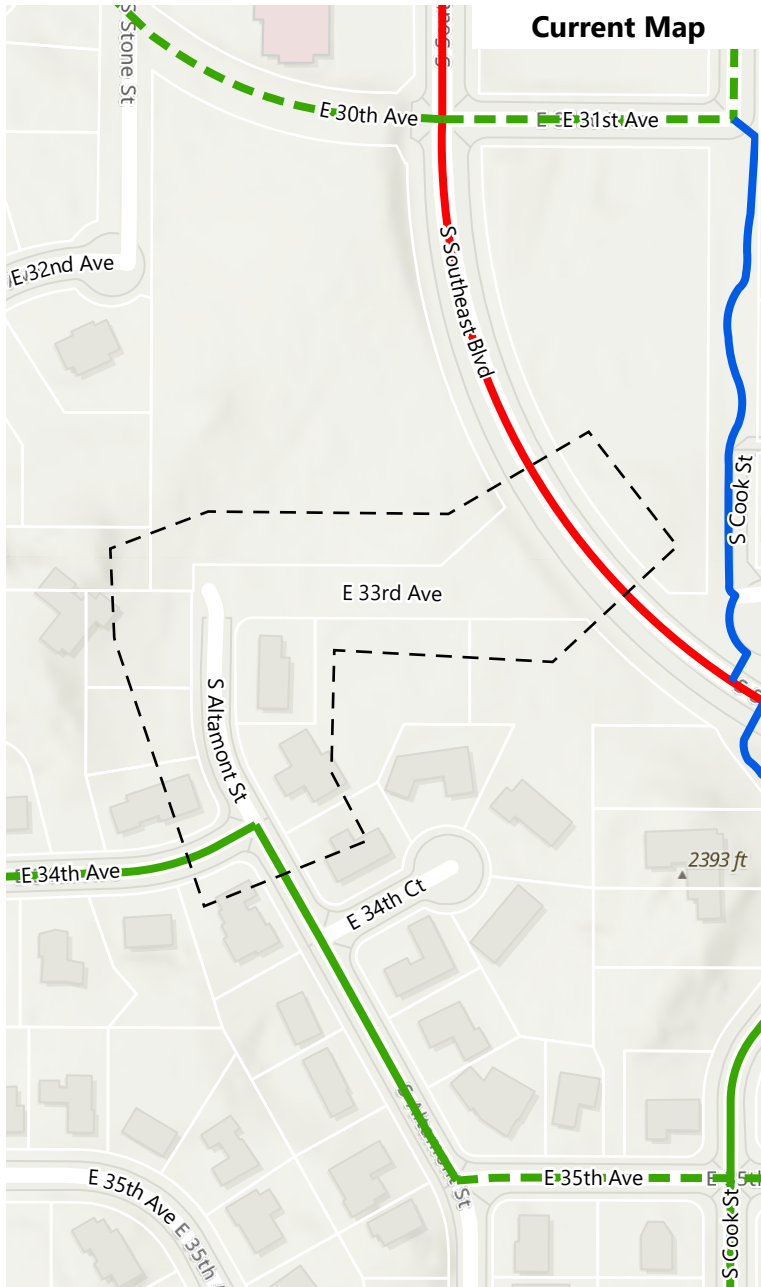
Z21-282COMP: Bike Map Modification for File Z22-098COMP (Map TR-5)

S Altamont Street and E 33rd Ave in the Lincoln Heights Neighborhood

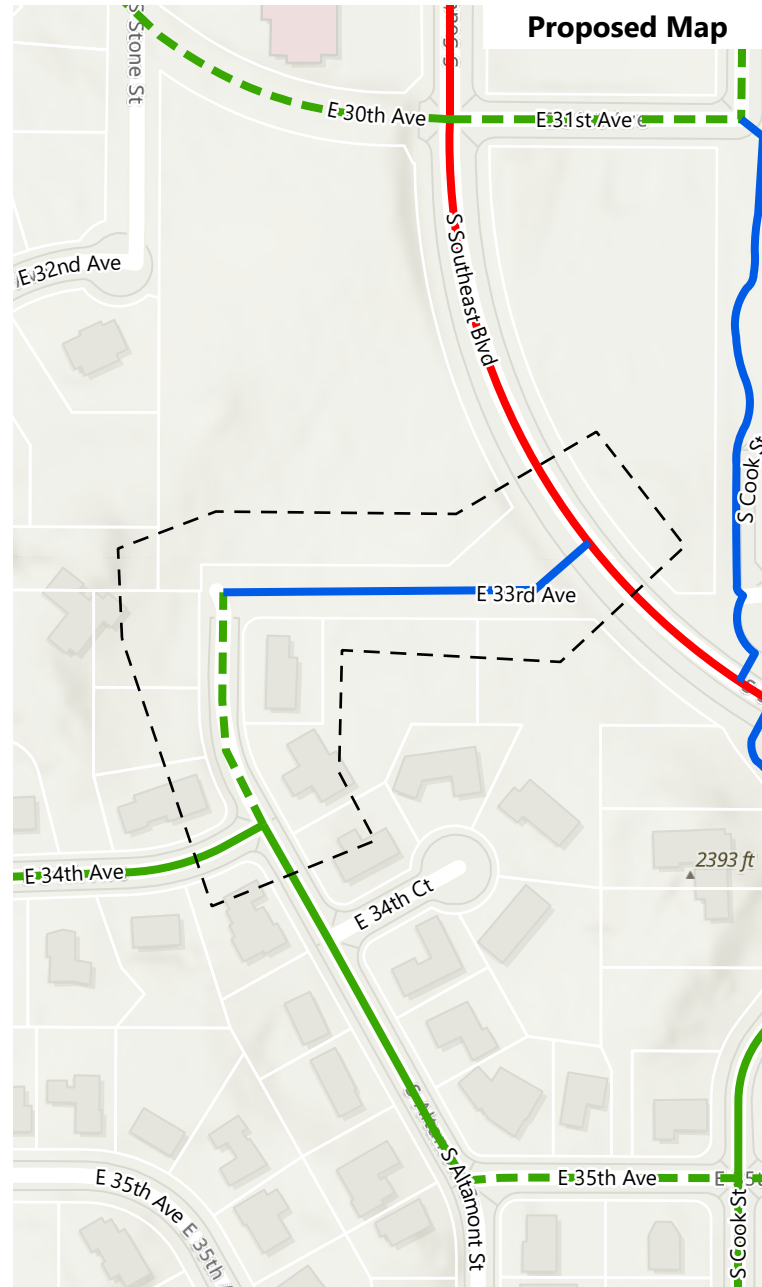
2022 Comprehensive Plan Amendment Proposals

Drawn: 11/22/2022

THIS IS NOT A LEGAL DOCUMENT
The information shown on this map is compiled from various sources and is subject to constant revision. Information shown on this map should not be used to determine the location of facilities in relationship to property lines, section lines, streets, etc.



Current Map



Proposed Map

[- - -] Area of Proposed Change

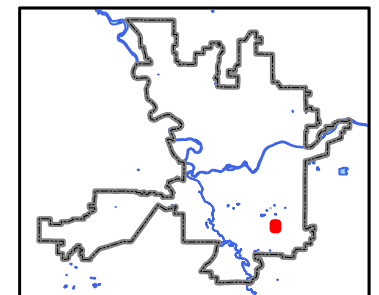
Future Bikeway Network

- Bike Friendly Route
- Closed to Bike
- Difficult Connection
- High Traffic (Bike Lane)
- High Traffic (Shared)
- Moderate Traffic (Bike Lane)
- Moderate Traffic (Shared)
- Neighborhood Greenway
- Shared Use Path
- Soft Surface Path

Parcel

Length of Change: 0.13 Miles

PROJECT LOCATION



Planning Services Department
Drawn By: Kevin Freibott