

Work Done To Date

Beacon Hill Trail System Preservation Plan (2016)

Make Beacon Hill Public - Phase 1 (2018-2021)

- The City of Spokane and Spokane County jointly worked to preserve over 200 acres of land through land acquisitions and donated easements.

Make Beacon Hill Public - Phase 2 (2022 - Current)

- The City of Spokane's 2022 Parks and Natural Areas Master Plan identifies outdoor mountain bike trails, trailheads, and soft surface trails as a Tier 1 priority.
- The Spokane County 2020 Parks, Recreation & Open Space Plan and the 2014 Spokane County Regional Trail Plan both call for investment in preserving and enhancing access to its trail system.
- Between April 2021 and 2022, Master Planning and Public Engagement work was completed for John H. Shields Park as part of Make Beacon Hill Public - Phase 2.
- In 2022, the City of Spokane & Spokane County jointly applied for and received a grant to fund the design and construction of trailhead improvements at John H. Shields Park and Camp Sekani Park.
- The primary goal of Make Beacon Hill Public - Phase 2 is to expand and enhance access to the Beacon Hill Trail System by renovating the two primary access points to Beacon Hill: John H. Shields Park and Camp Sekani Park.



we are here!
cooper elementary

Project Goals:

- Enhance access to protected natural public recreational land.
- Increase parking capacity and improve parking circulation.
- Improve trailhead safety through site lighting, fencing, and safer vehicular access points.
- Build a play space at John H. Shields Park.
- Minimize environmental impacts by constructing in areas previously disturbed.
- Restore unofficial trails with official access points and reconstructed materials.
- Promote sustainability through native vegetation and natural irrigation.
- Connect to a future transit stop and the Centennial Trail.
- Provide needed amenities such as seating areas and restrooms.



City of Spokane
PARKS & RECREATION

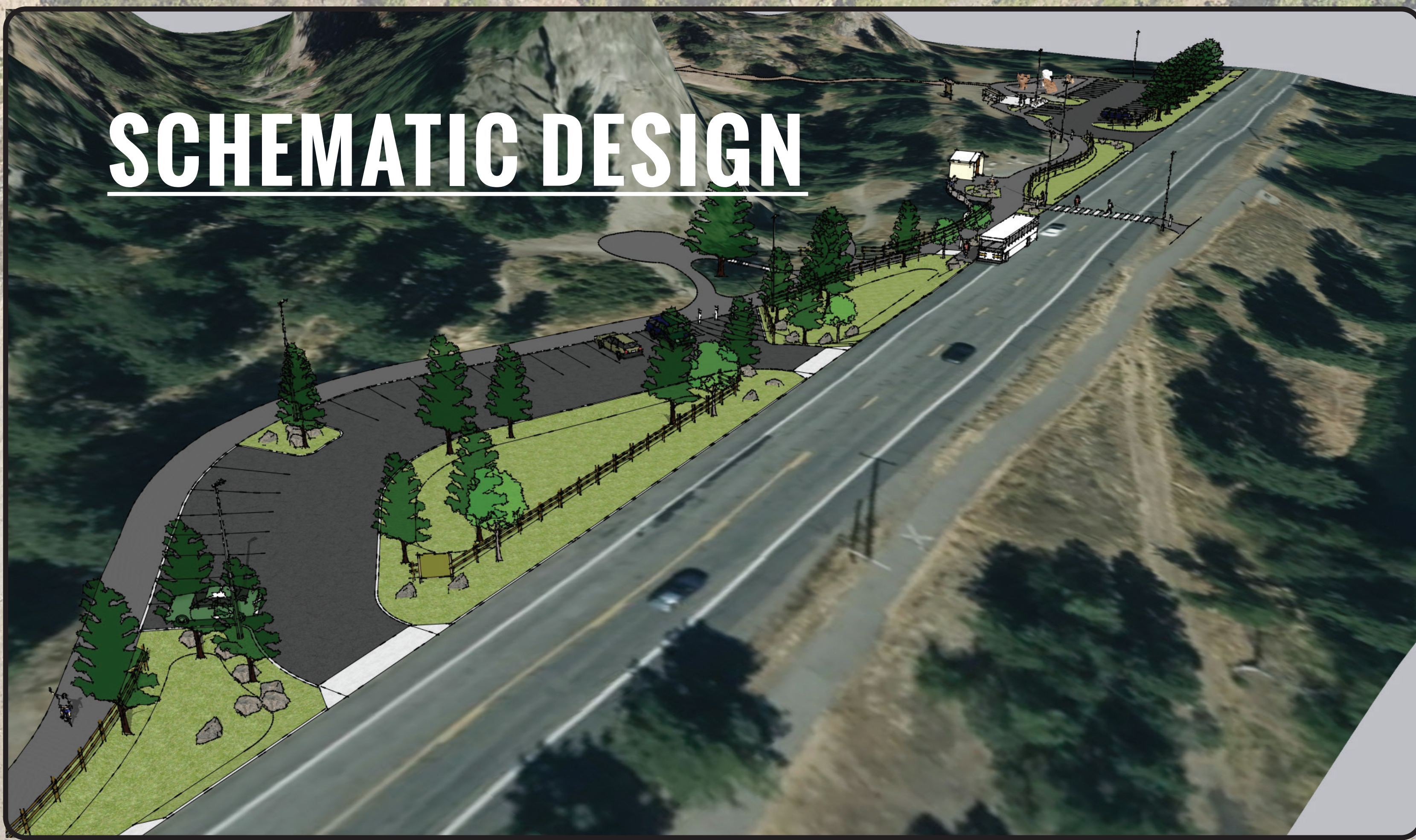
Make Beacon Hill Public Phase 2

October 2023



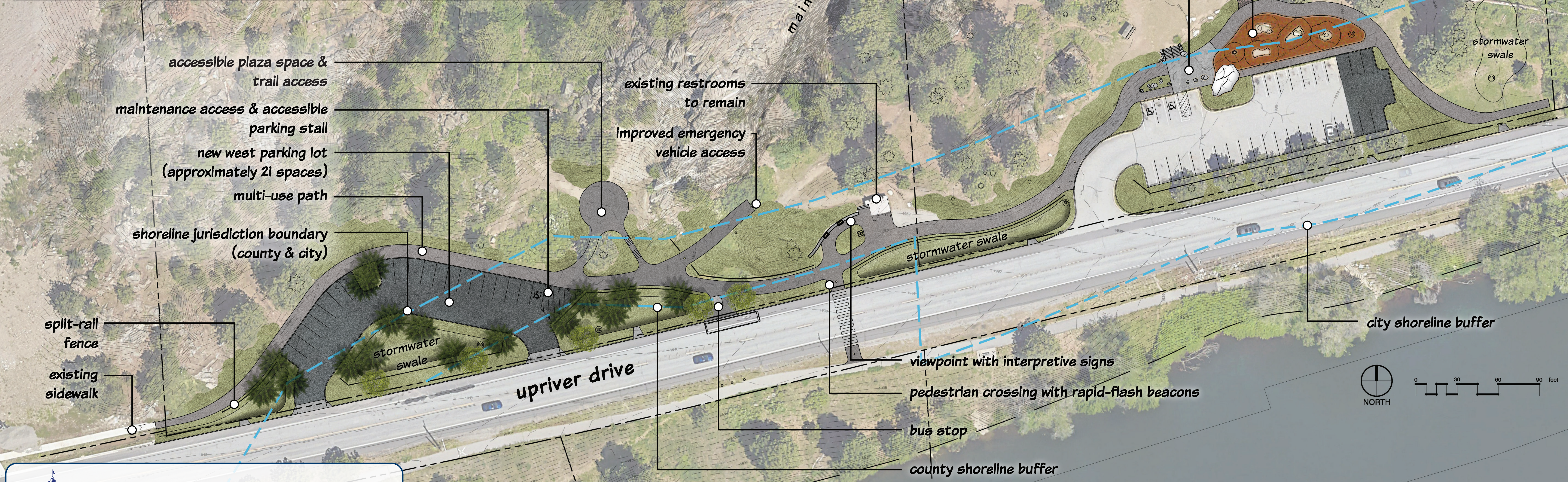
Note: This map is a graphic depiction not a legal map and should not be construed as an accurate depiction of property or ownership.

SCHEMATIC DESIGN



This schematic design plan illustrates an advancement from the April 2021-2022 Master Planning stage.

The advanced design illustrates changes derived from recent background data such as a cultural resources report, site surveying, and a geotechnical report.

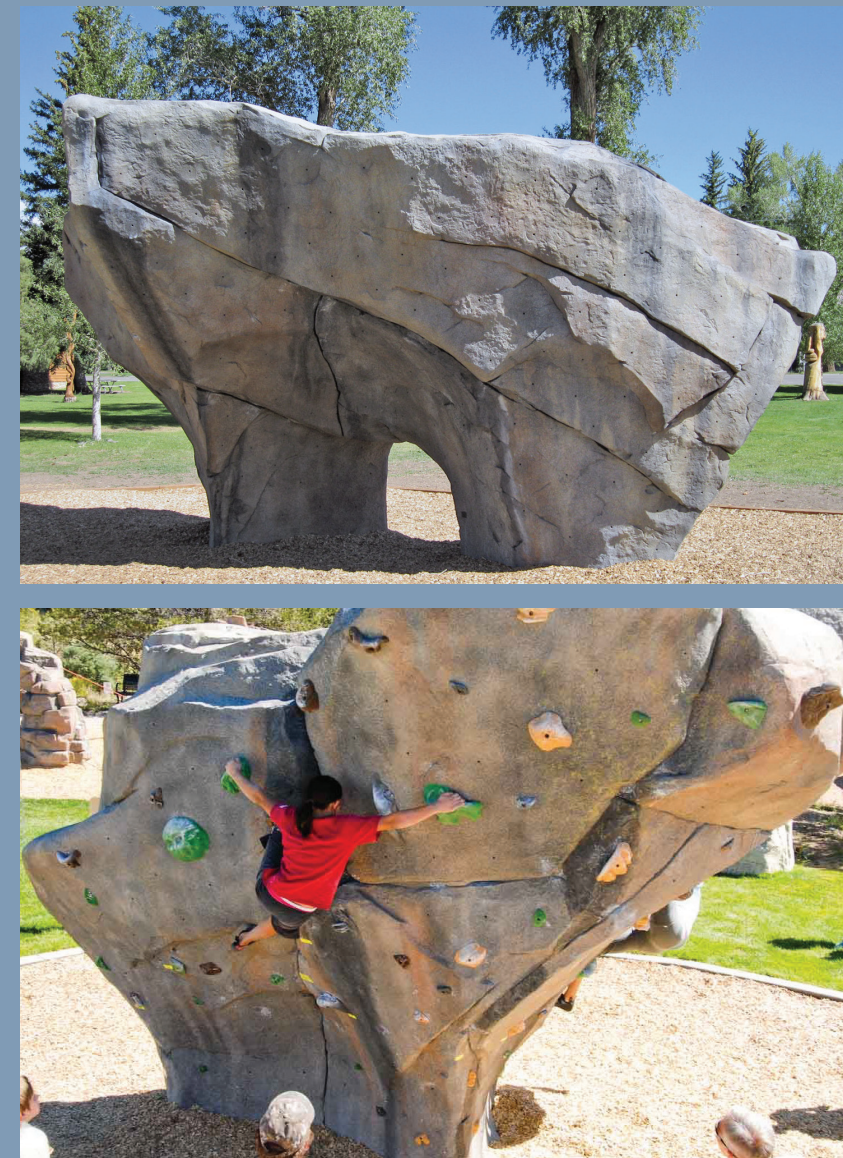


Make Beacon Hill Public Phase 2 - John H. Shields Park Trailhead

October 2023



SCHEMATIC DESIGN



existing conditions

proposed design

examples of potential proposed amenities

SCHEMATIC DESIGN

relocated sign

accessible overlook

upper tier
(approximately 47 stalls)

lower tier
(approximately 53 stalls)

entry gate

stormwater swales

new parking lot entry

existing storage building to remain

existing access gate to remain

bike racks

bike repair stand

relocated kiosk

movable furnishings

accessible parking

relocated portable restroom enclosure

stairs between parking tiers

retaining walls

paved trail to Centennial Trail

drainage crossing

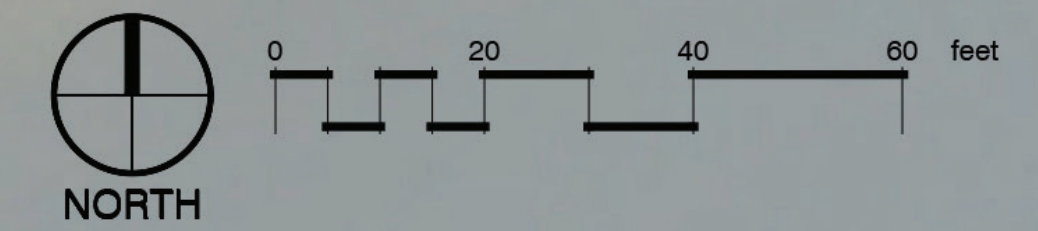
pedestrian crossing with rapid-flash beacon lights

shoreline jurisdiction boundary

county shoreline buffer

upriver drive

private property



*This schematic design is contingent upon Shoreline Jurisdiction Approval. Parking lot layout and size; pedestrian routes and crosswalk; proposed amenities; and locations of amenities are all subject to change.



Make Beacon Hill Public Phase 2 - Camp Sekani Park Trailhead

October 2023



SCHEMATIC DESIGN



existing conditions

proposed design

examples of potential proposed amenities