

# RIMROCK TO RIVERSIDE + PALISADES NORTH TRAILHEAD **Public Workshop**

November 30, 2023



# Workshop Agenda

## Welcome & Opening Remarks

### Presentation - 30 mins

- Rimrock to Riverside Visioning
- Palisades North Trailhead Designs

### Session Break - 60 mins

- Q&A
- Review Display Boards
- Provide Feedback

## Closing & Next Steps

# Project Schedule Outlook

**Initial Stakeholder Workshop - October 26, 2023**

Design Discovery & Vision Planning

**Public Workshop - November 30, 2023** ← *we are here*

Rimrock to Riverside Vision

North Trailhead Concept Designs

Confirming Project Values and Priorities

**Friends of Palisades Annual Meeting - December 10, 2023**

Project Next Steps

North Trailhead Final Designs

# RIMROCK TO RIVERSIDE VISIONING

# RIMROCK TO RIVERSIDE

## Collaborative Approach

### Acknowledging Existing Partnerships (Rimrock to Riverside)

Inland Northwest Land Conservancy (INLC)

INLC Conservation Angels

Friends of Palisades

Citizen Stewards

Spokane County Parks, Recreation and Golf



### Future Partnerships

City of Spokane Parks and Recreation



# RIMROCK TO RIVERSIDE

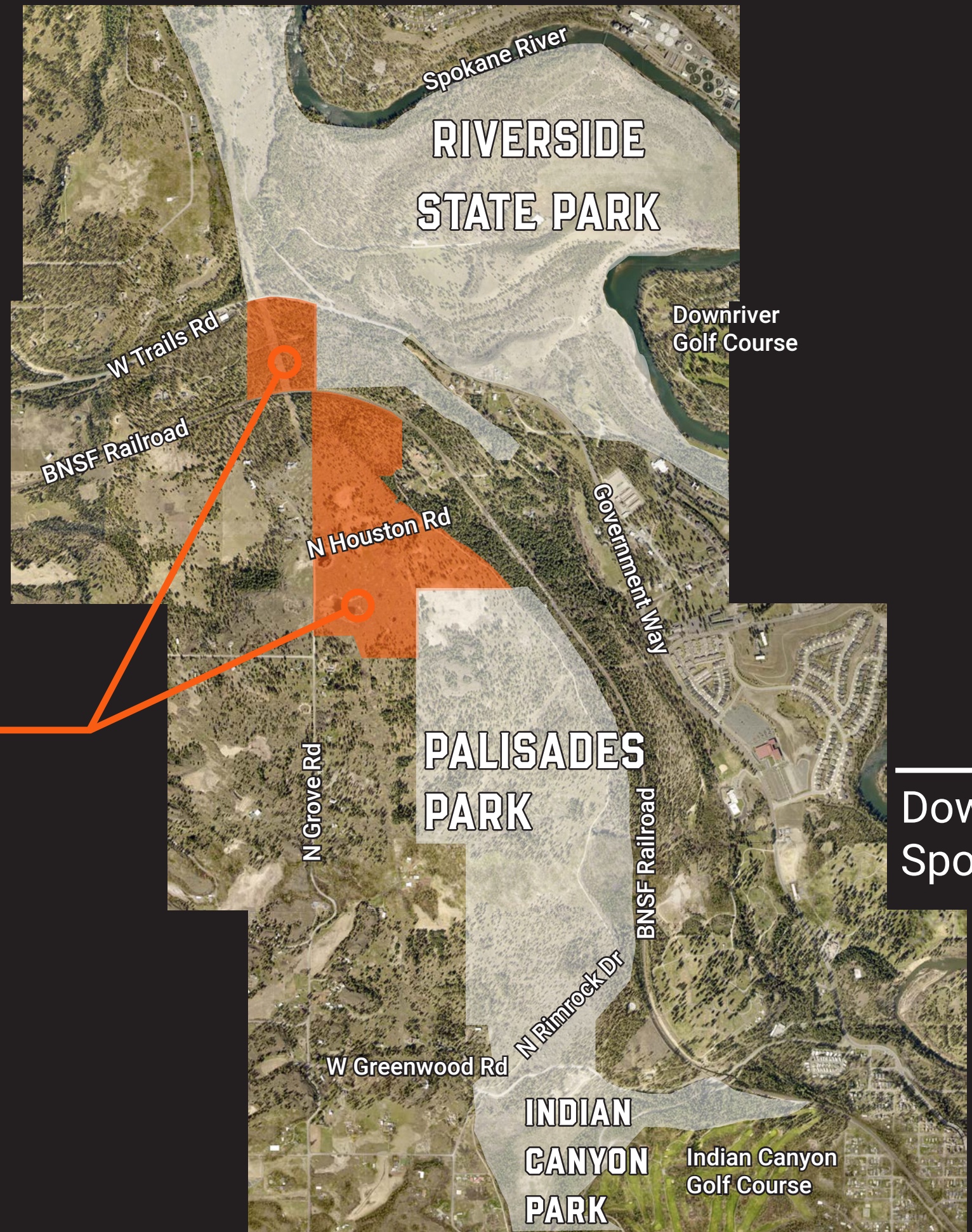
## Project Core Values

Fulfill Existing Commitments	Preserve & Restore Landscapes	Promote Healthy & Safe Mobility
Establish Sustainable Partnerships		
	Reinforce Character & Identity	

SEE DISPLAY BOARDS FOR MORE INFORMATION



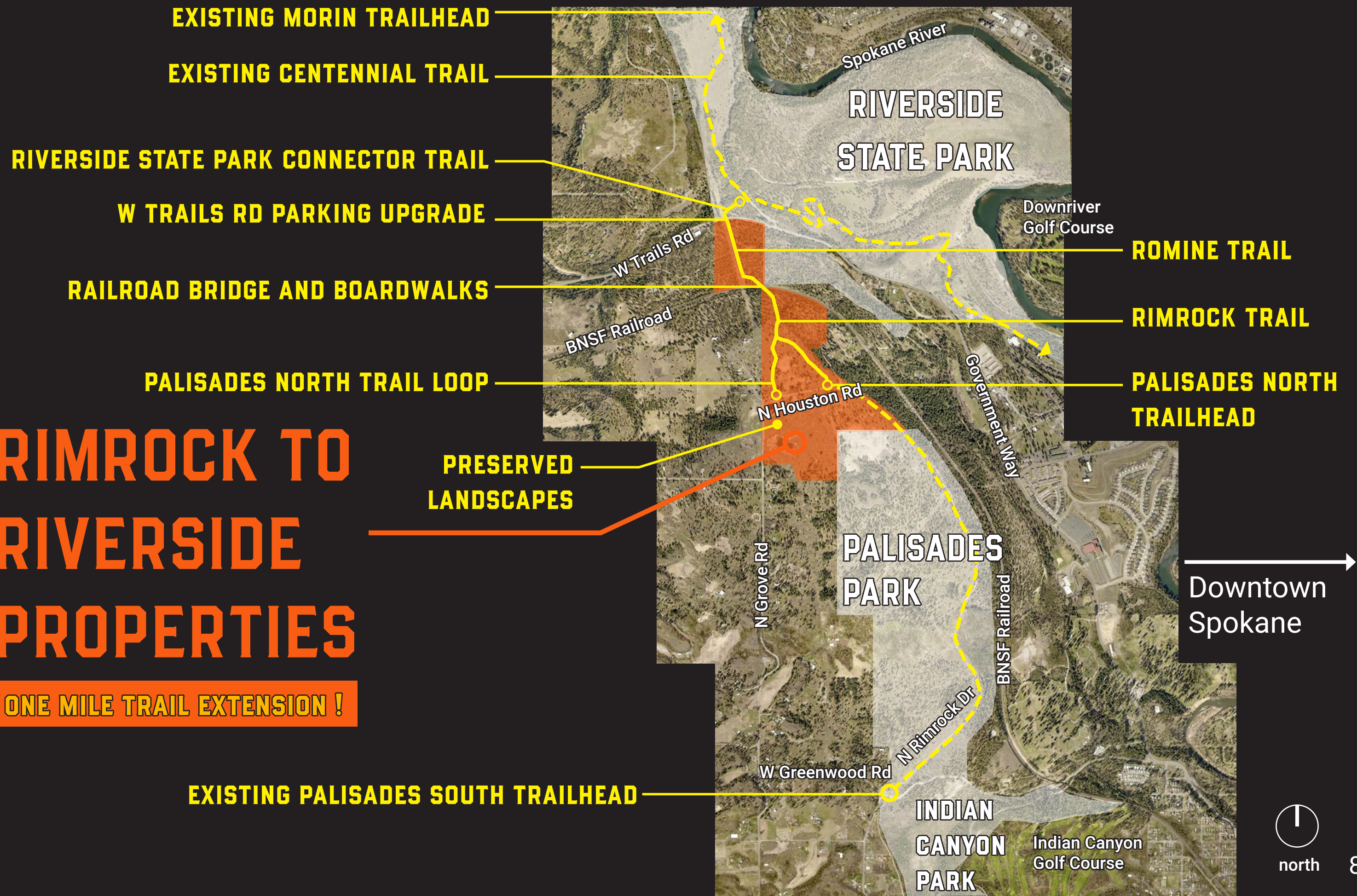
# RIMROCK TO RIVERSIDE PROPERTIES



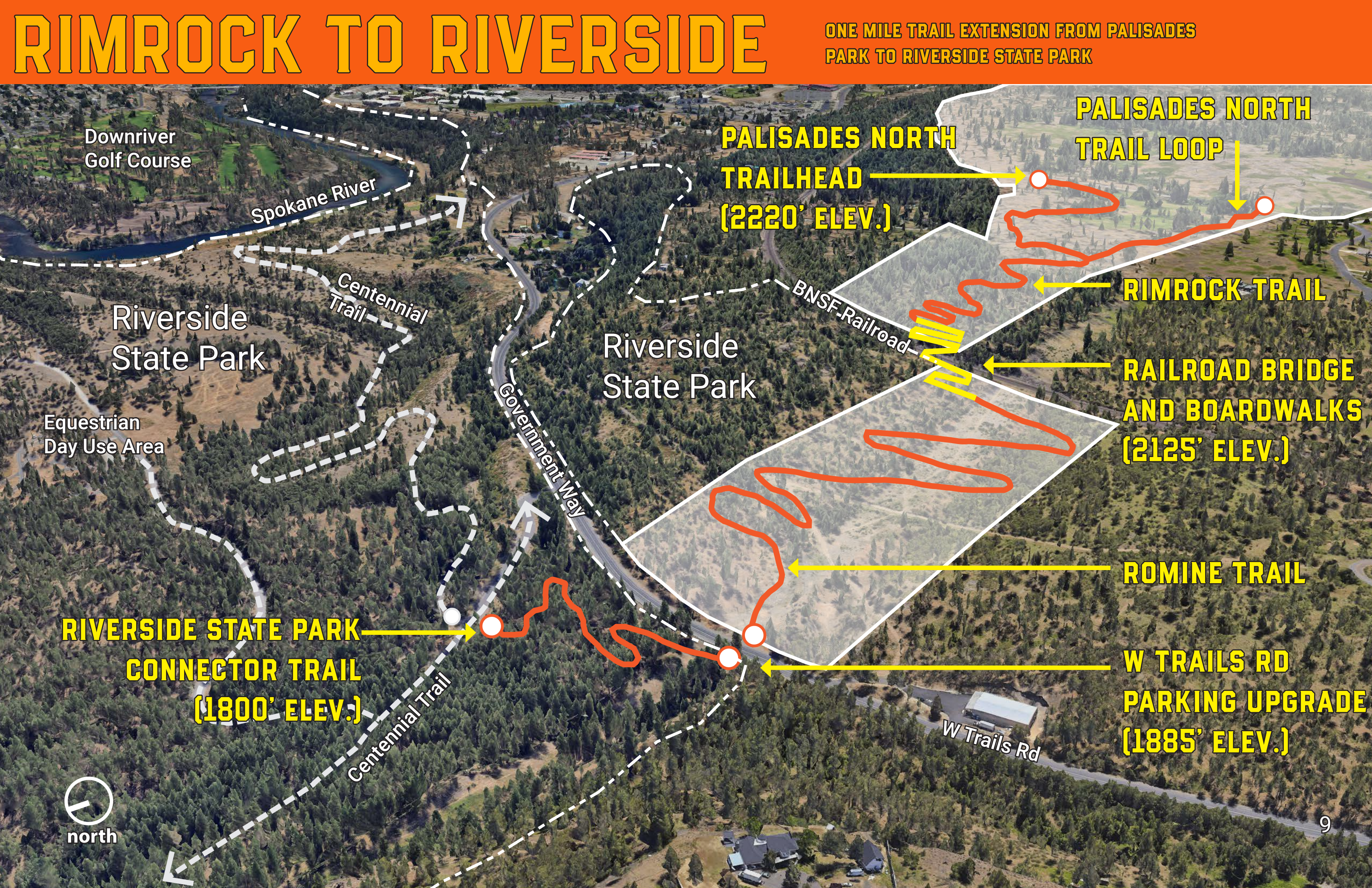


# RIMROCK TO RIVERSIDE PROPERTIES

ONE MILE TRAIL EXTENSION !







# RIMROCK TO RIVERSIDE

ONE MILE TRAIL EXTENSION FROM PALISADES PARK TO RIVERSIDE STATE PARK

**PALISADES NORTH TRAILHEAD**  
(2220' ELEV.)

**PALISADES NORTH TRAIL LOOP**

**RIMROCK TRAIL**

**RAILROAD BRIDGE AND BOARDWALKS**  
(2125' ELEV.)

**ROMINE TRAIL**

**W TRAILS RD PARKING UPGRADE**  
(1885' ELEV.)

**RIVERSIDE STATE PARK CONNECTOR TRAIL**  
(1800' ELEV.)





# **PALISADES NORTH TRAILHEAD IMPROVEMENTS**

# NORTH TRAILHEAD IMPROVEMENTS

## Initial Stakeholder Workshop Summary

**Top Priority Amenities:** donor recognition feature, kiosk, public restroom, site security.

**Low Priority Amenities:** parking lot lighting, bike amenities, equestrian amenities, rest area

**Most Excited About:** increasing site security, increasing access to natural lands

**Most Concerned About:** ecological impacts, construction timeline, safety & access

**CONFIRM  
PRIORITIES  
TONIGHT**



# NORTH TRAILHEAD IMPROVEMENTS

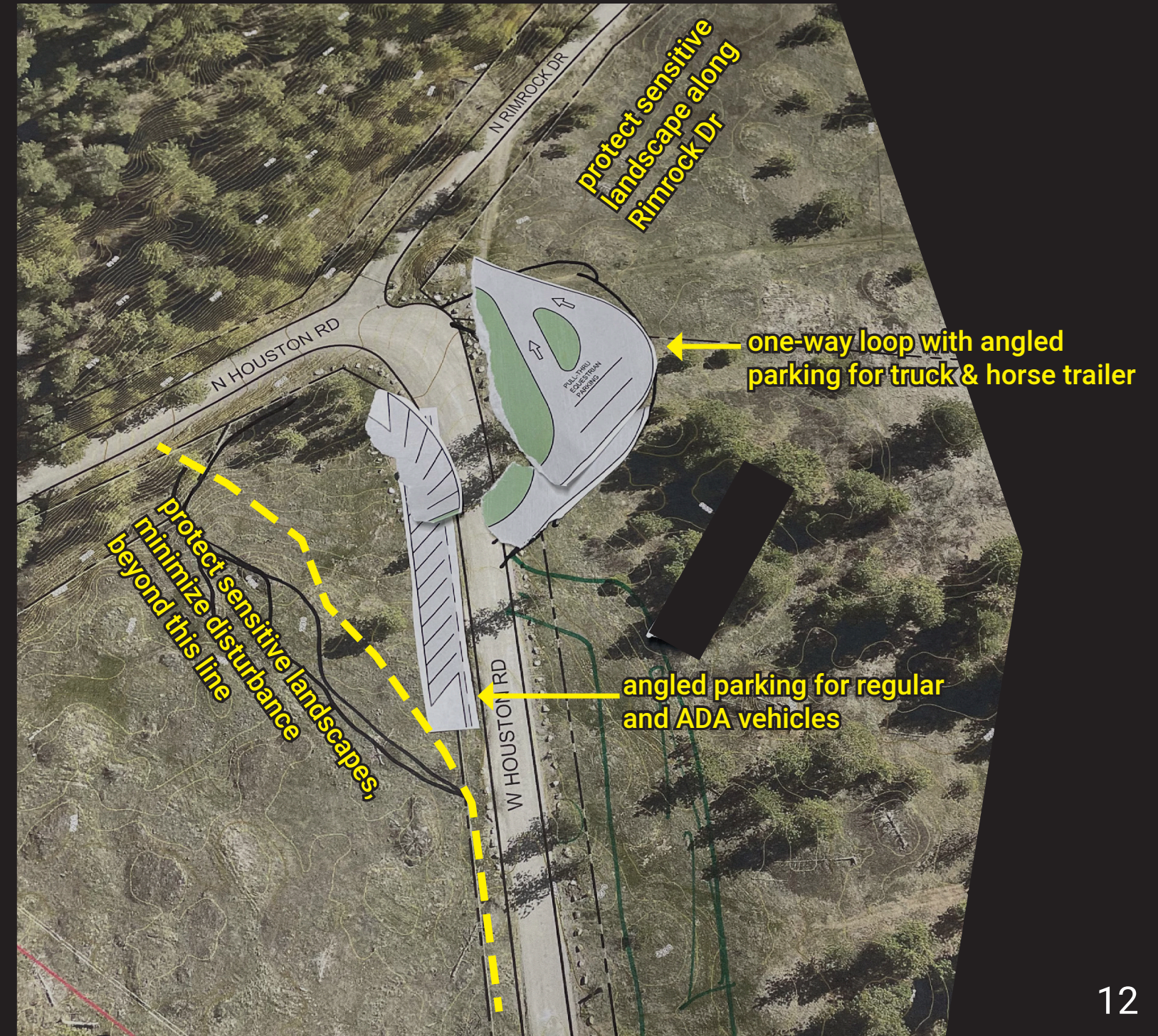
## Initial Stakeholder Workshop Summary

### Exercise for Trailhead Layouts:

- Consolidate parking towards east end of Houston Rd
- Locate equestrian parking lot on south side of road and regular parking lot on north side of road

### Challenges:

- Disturbing sensitive landscapes
- Steep slopes at road bend
- Safe sight lines at road bend





# NORTH TRAILHEAD IMPROVEMENTS

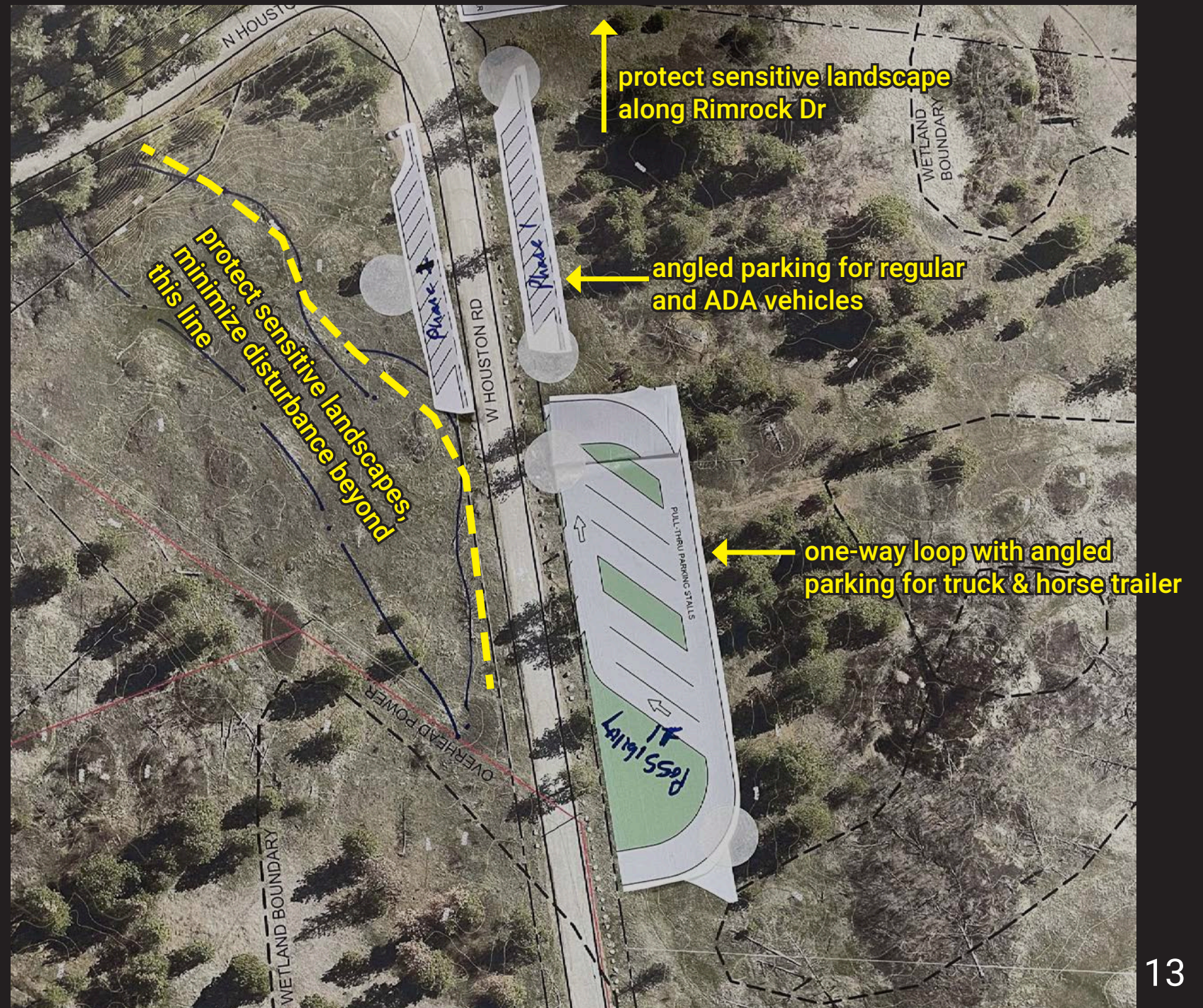
## Initial Stakeholder Workshop Summary

### Exercise for Trailhead Layouts:

- Layout parking as close to Houston Rd as possible
- Separate equestrian parking lot from regular parking lot
- Propose angular parking for all uses for ease of entry/exit

### Challenges:

- Road right-of-way limitations
- Disturbing sensitive landscapes
- Potential safety concerns with parking spread out further





# NORTH TRAILHEAD IMPROVEMENTS

## Local Precedents (Spokane County)

James T. Slavin Trailhead Renovation  
Bid - 2022, Built - 2022/2023

- Gated, paved parking lot (20 incld. ADA)
- Gravel equestrian parking renovation (5)
- Horse hitching rails (5)
- Fencing, boulders, signage, landscape work
- Web camera, no lighting

**2022 Project Costs: Under \$200,000  
for design & construction**

Trentwood Trailhead (Etter Ranch)  
Bid - 2021, Built 2021

- Paved parking lot (20 incld. ADA)
- Gated grass equestrian parking (5)
- Perimeter fencing and boulders
- Stormwater infrastructure, landscape work
- Web camera, security lighting
- Kiosk, entry sign, directional signs

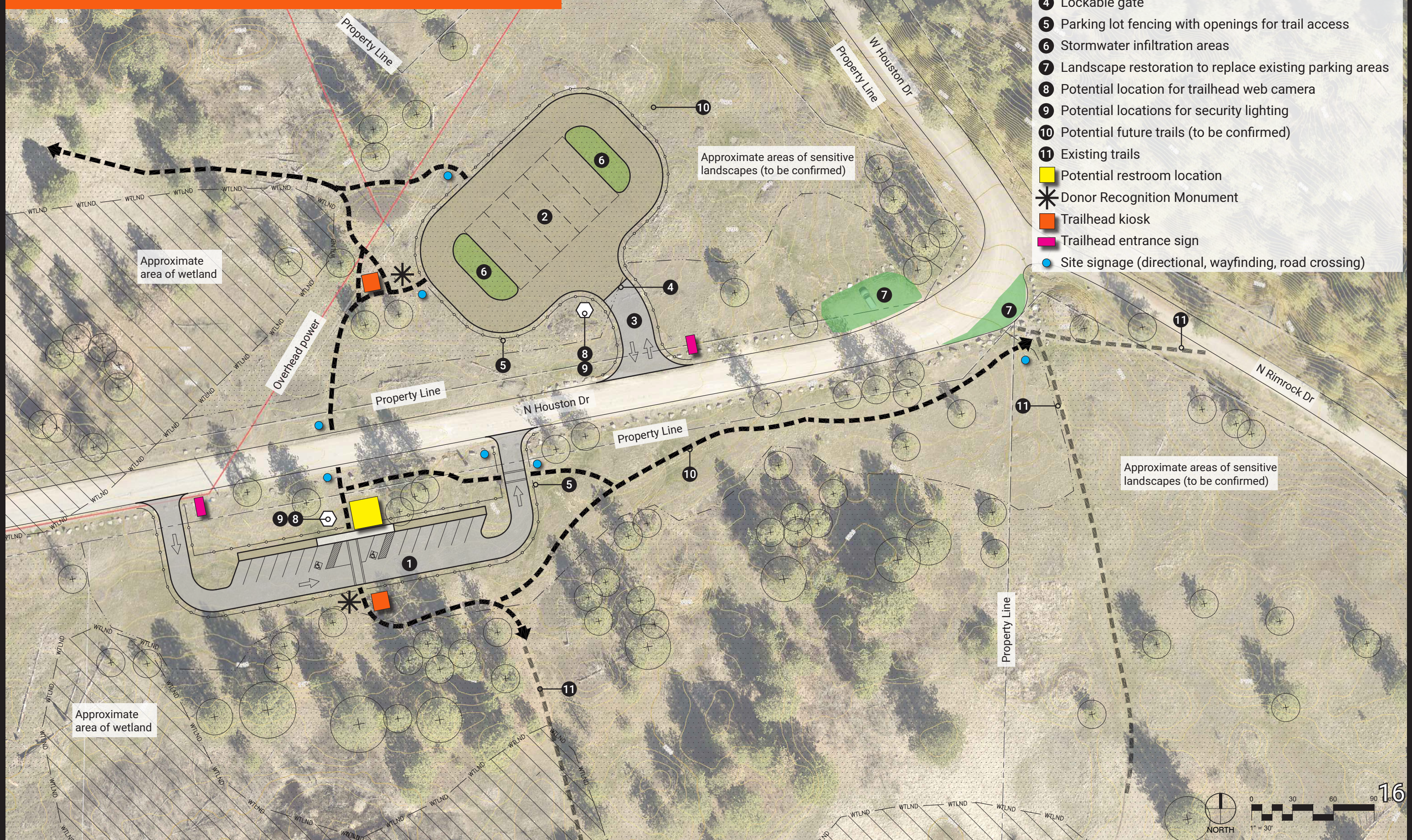
**2021 Project Costs: Over \$500,000  
for design & construction**



# **NORTH TRAILHEAD IMPROVEMENTS PRELIMINARY DESIGN CONCEPTS**



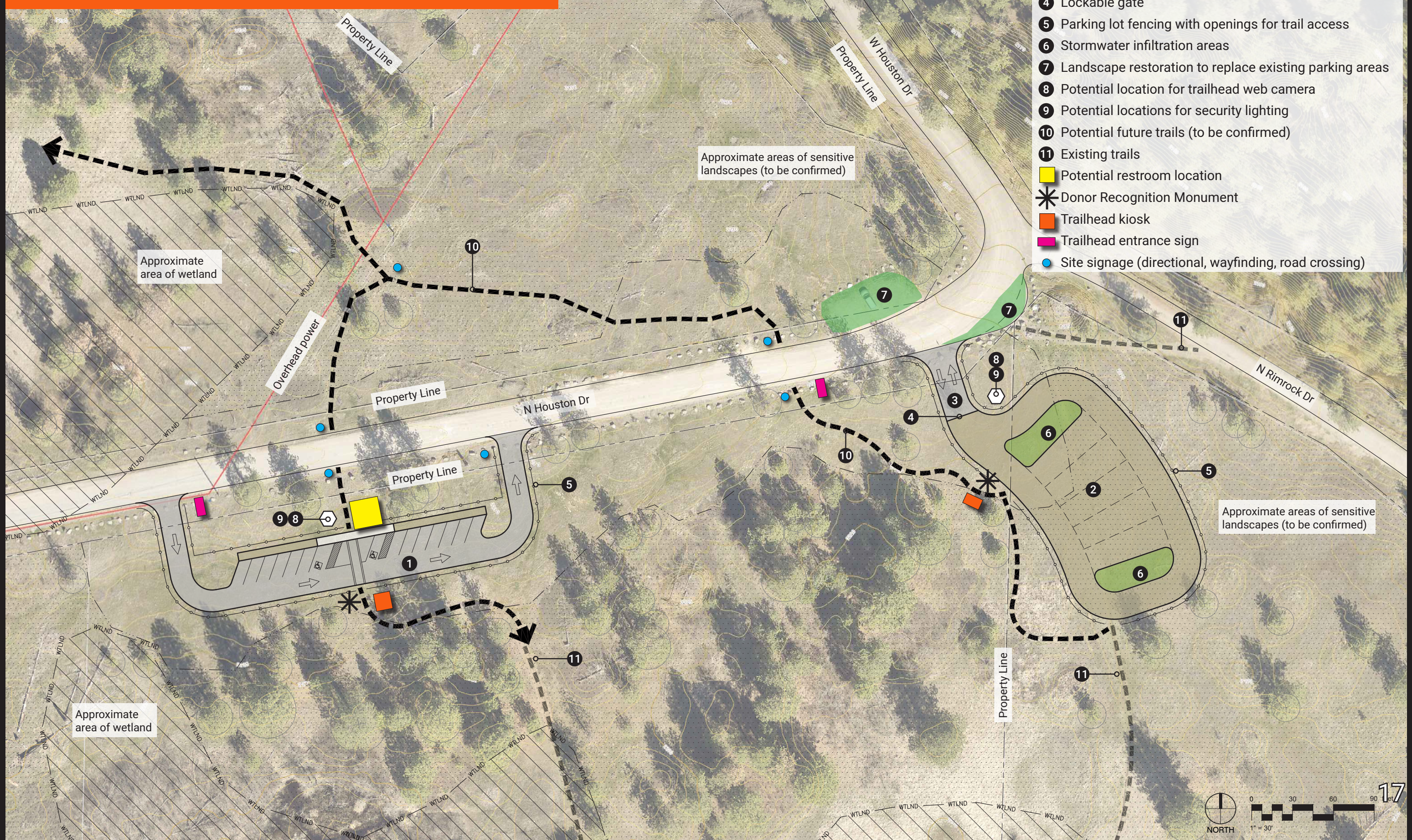
# NORTH TRAILHEAD CONCEPT A SEPARATE PARKING ACROSS ROAD





# NORTH TRAILHEAD CONCEPT B

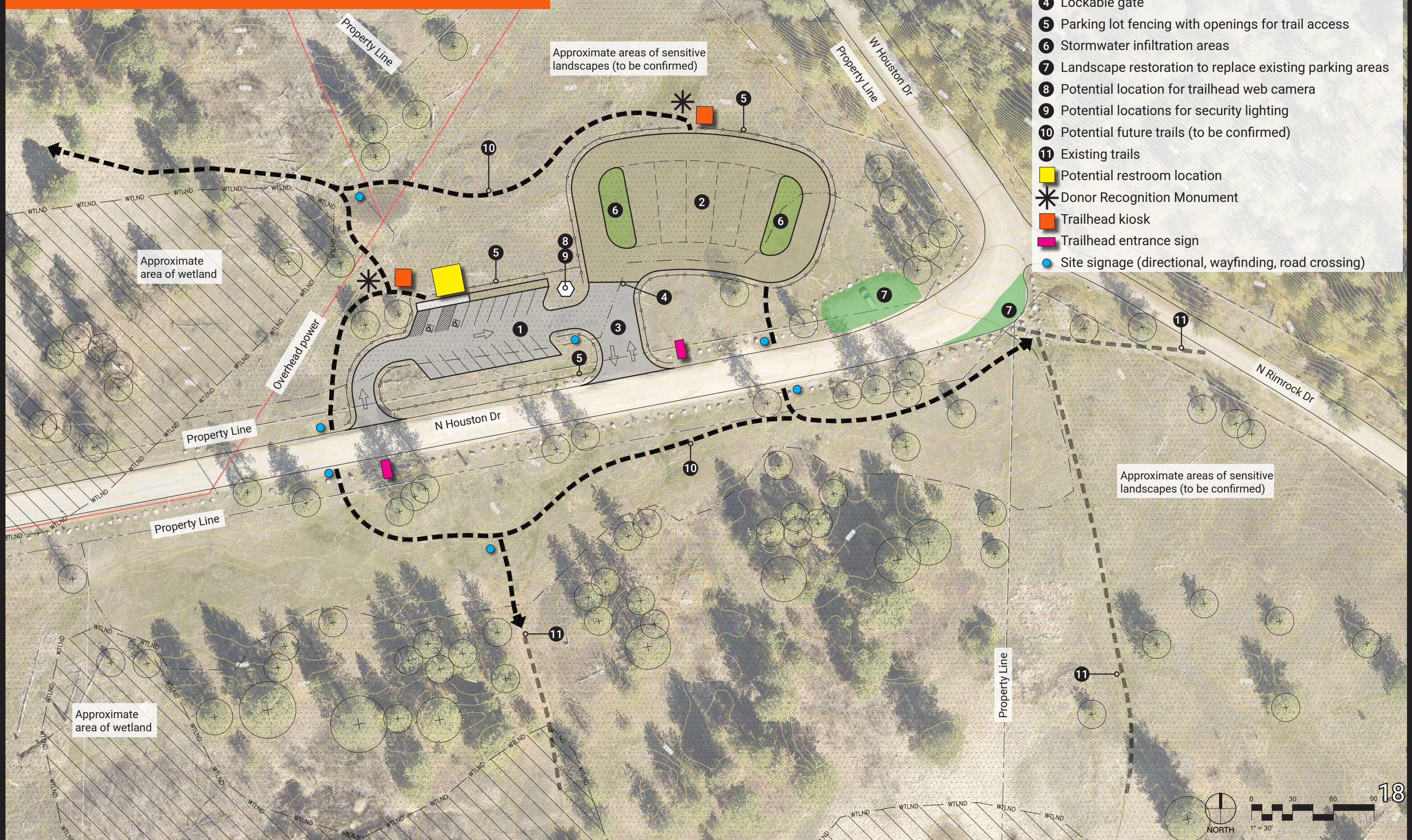
## PARKING ON SOUTH SIDE OF ROAD





# NORTH TRAILHEAD CONCEPT C

## PARKING ON NORTH SIDE OF ROAD





# NORTH TRAILHEAD IMPROVEMENTS

## Confirming Priorities

Preliminary price range for  
full build out (2023 costs)



\$500,000 +/-

Engineering & Permitting  
Construction Management

Donor Recognition Feature  
Trailhead Kiosk

Trailhead Web Camera & Lighting  
Paved Parking Lot

Gravel Equestrian Parking Lot

Prefabricated Restroom Building

Interpretive & Educational Signage

Fencing & Directional Wayfinding

Other:

**SESSION BREAK**



# Closing & Next Steps

Complete and hand in survey feedback forms

Look out for online feedback opportunities

Friends of Palisades Annual Meeting - December 10, 2023

- Project Next Steps
- North Trailhead Final Concept Designs

**THANK YOU!**