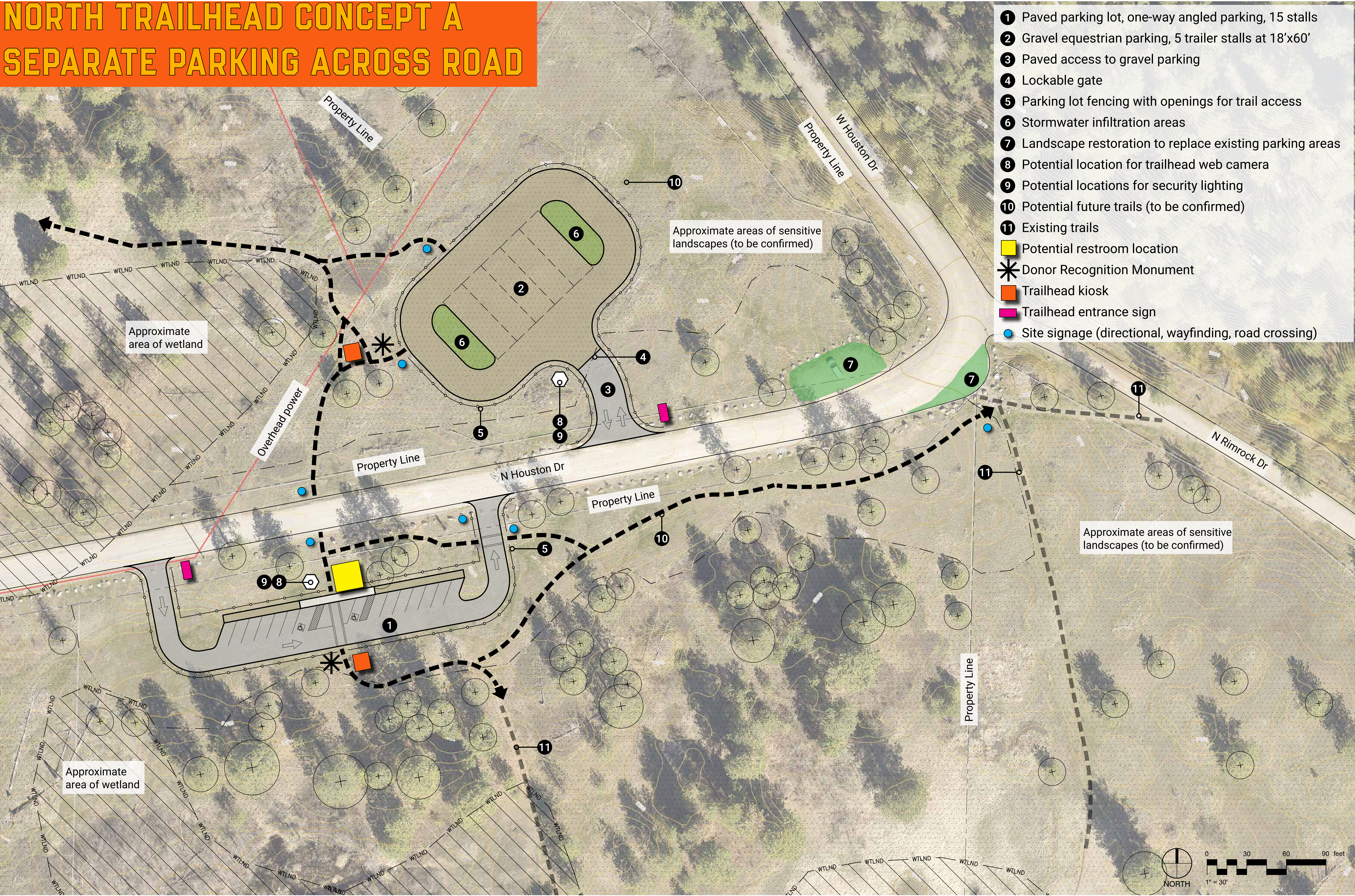


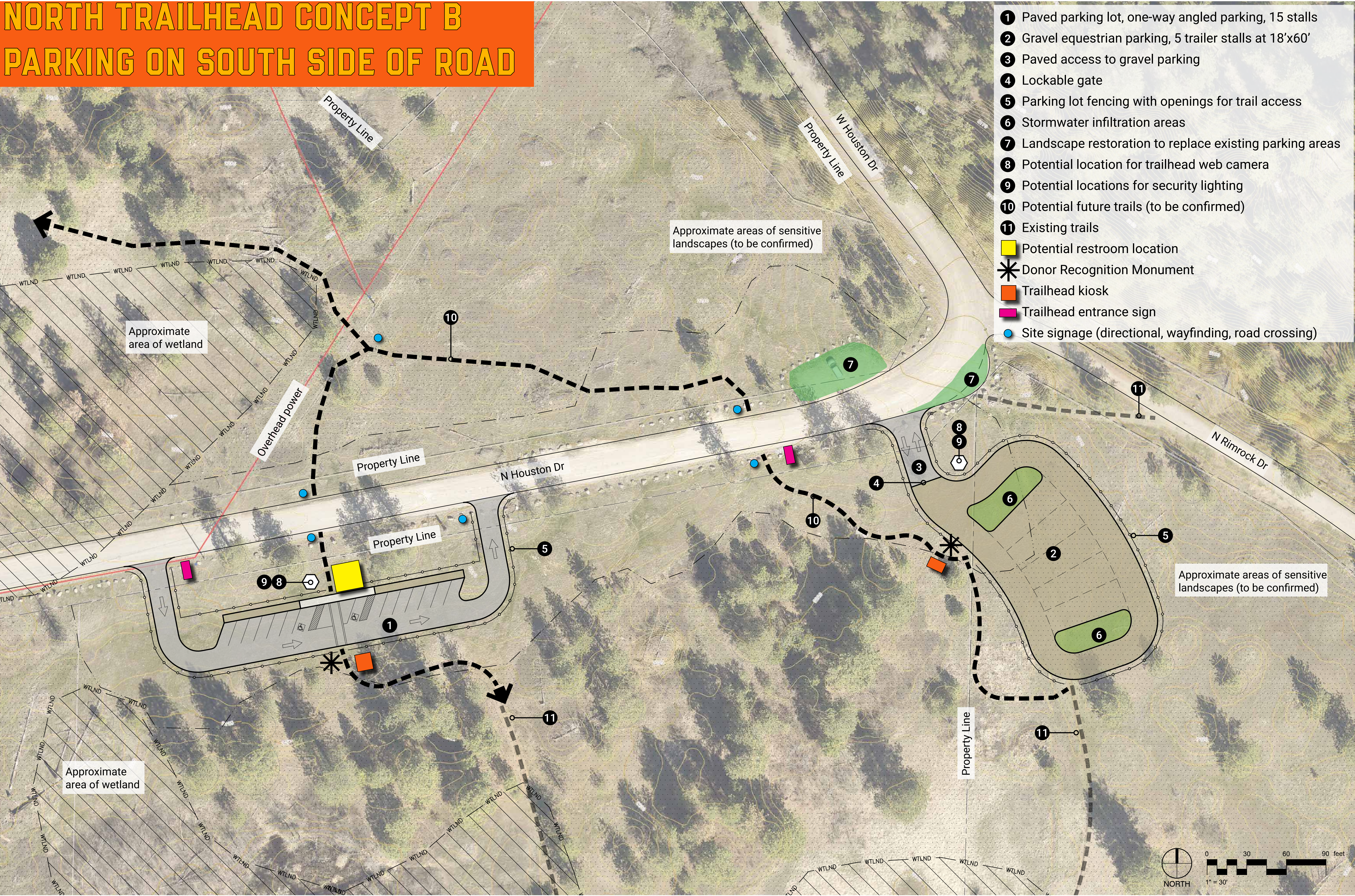
NORTH TRAILHEAD CONCEPT A

SEPARATE PARKING ACROSS ROAD



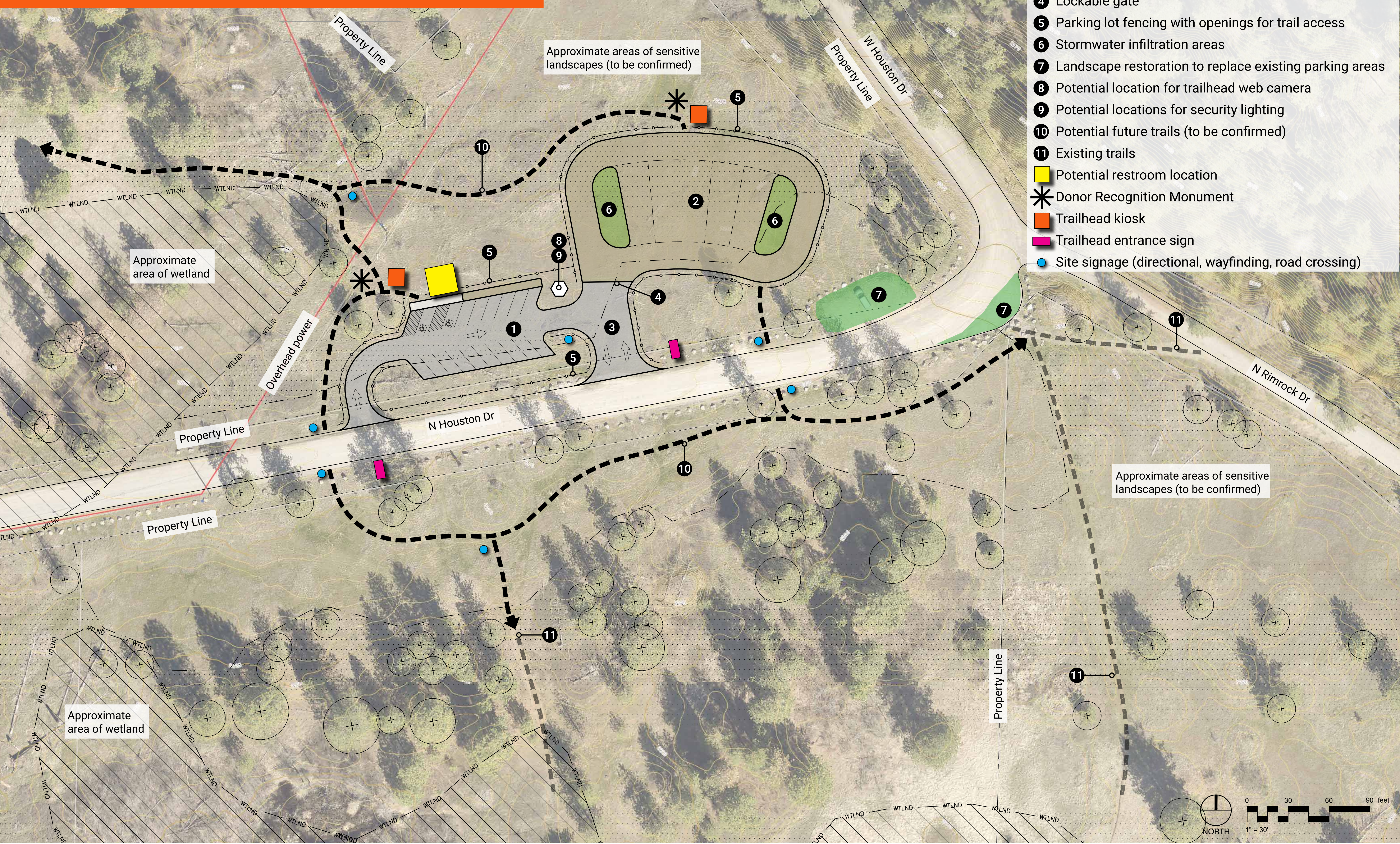
NORTH TRAILHEAD CONCEPT B

PARKING ON SOUTH SIDE OF ROAD



NORTH TRAILHEAD CONCEPT C

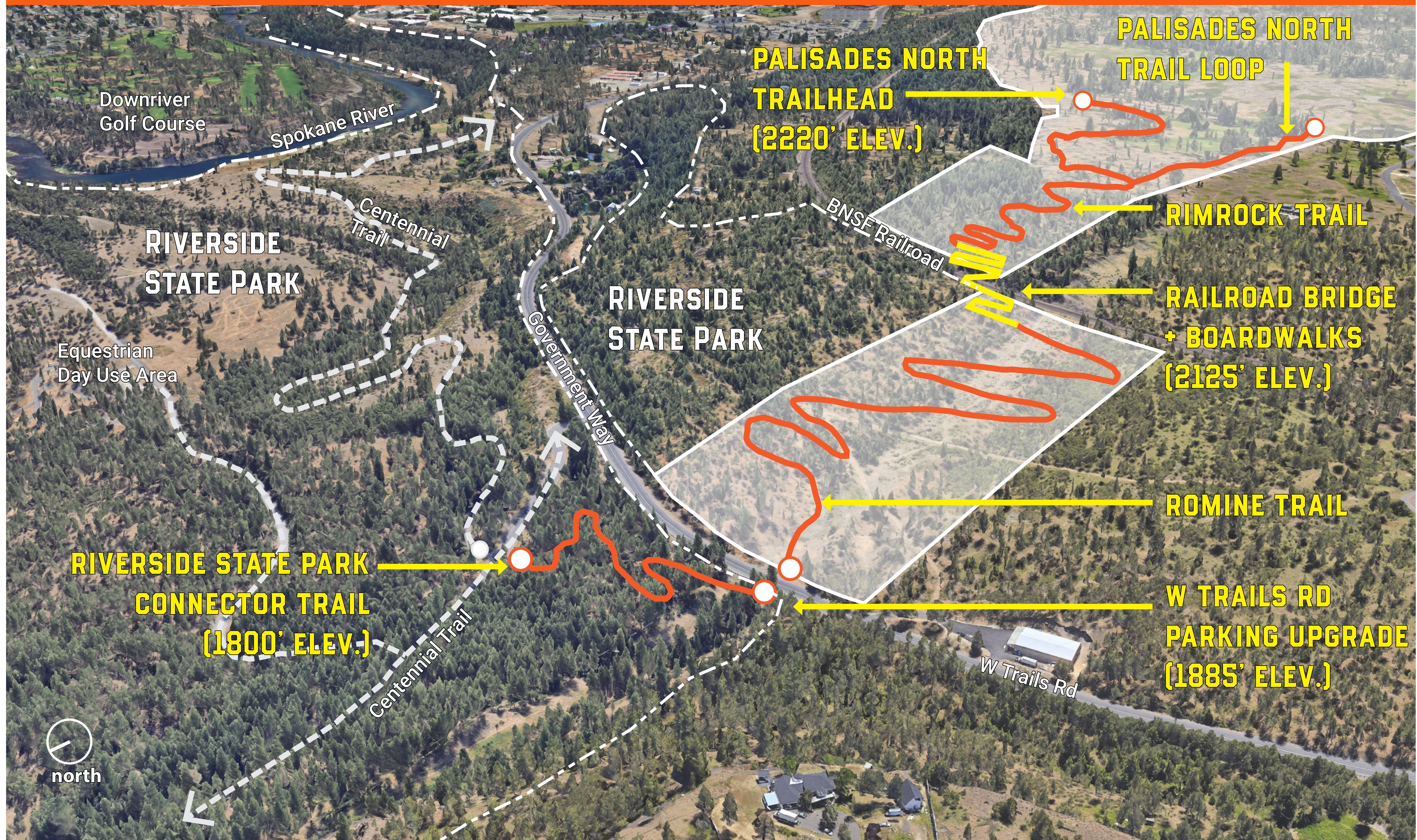
PARKING ON NORTH SIDE OF ROAD



- 1 Paved parking lot, one-way angled parking, 15 stalls
- 2 Gravel equestrian parking, 5 trailer stalls at 18'x60'
- 3 Paved access to gravel parking
- 4 Lockable gate
- 5 Parking lot fencing with openings for trail access
- 6 Stormwater infiltration areas
- 7 Landscape restoration to replace existing parking areas
- 8 Potential location for trailhead web camera
- 9 Potential locations for security lighting
- 10 Potential future trails (to be confirmed)
- 11 Existing trails
- Yellow square Potential restroom location
- Asterisk Donor Recognition Monument
- Orange square Trailhead kiosk
- Pink rectangle Trailhead entrance sign
- Blue circle Site signage (directional, wayfinding, road crossing)

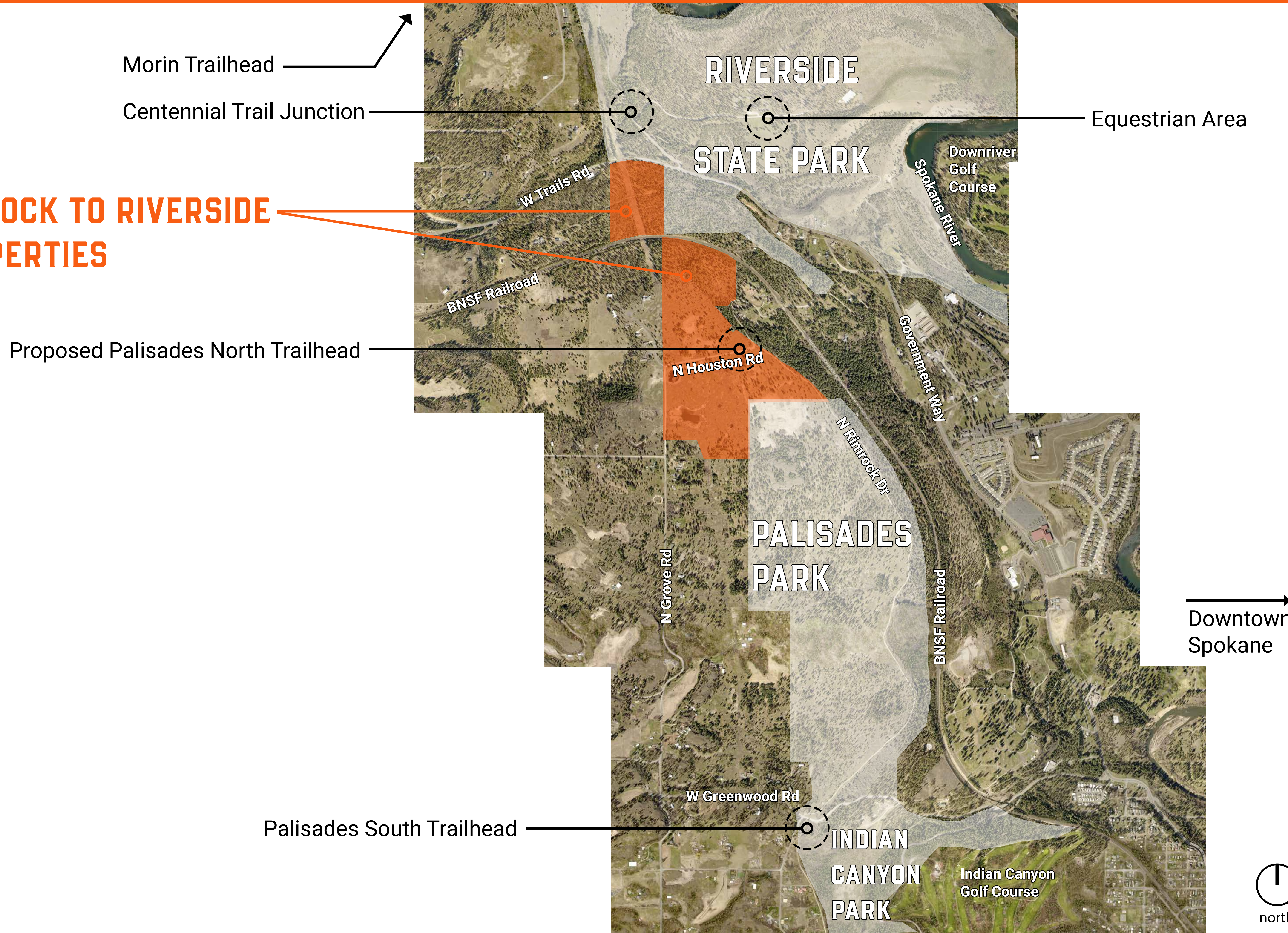
RIMROCK TO RIVERSIDE

ONE MILE TRAIL EXTENSION FROM
PALISADES PARK TO RIVERSIDE STATE PARK



RIMROCK TO RIVERSIDE CONTEXT MAP

**RIMROCK TO RIVERSIDE
PROPERTIES**



PROJECT CORE VALUES - DRAFT

<div><div>Fulfill Existing Commitments</div><div><ul style="list-style-type: none">• Inland Northwest Land Conservancy Donor Recognition of Rimrock to Riverside property.• Design and implement site improvements at the identified property.• ACTION: Host public workshops to confirm project priorities; prepare design & construction documents; develop funding strategies to implement the work.</div></div>	<div><div>Establish Sustainable Partnerships</div><div><ul style="list-style-type: none">• Acknowledge existing Rimrock to Riverside partnerships.• Establish new partnerships and maintain an open door for additional partnerships as work advances.• ACTION: Develop a partnership framework with goals & objectives, and priorities.</div></div>	<div><div>Preserve & Restore Landscapes</div><div><ul style="list-style-type: none">• Preserve natural lands around project areas.• Restore disturbed landscapes from construction.• Provide opportunities for education on land preservation and restoration.• ACTION: Develop a natural lands management plan in collaboration with local groups.</div></div>
<div><div>Promote Healthy & Safe Mobility</div><div><ul style="list-style-type: none">• Create an inclusive environment that enhances healthy living and safe connectivity for all park users.• ACTION: Develop a park user & mobility plan that identifies areas such as accessibility, trail mapping, and trailhead hubs.</div></div>	<div><div>Reinforce Character & Identity</div><div><ul style="list-style-type: none">• Establish a sense of place that offers memorable experiences for park users of all ages, abilities, and backgrounds.• ACTION: Develop a wayfinding & identity plan and implement short-term, temporary activation works.</div></div>	