

Community Check-in

Regional Dog Park Improvements High Bridge Park

Meeting Agenda

- **Brief Introduction**
- **High Bridge Dog Park Improvement Goals**
- **Draft Improvement Plan, Details, Schedule**
- **Comments & Feedback**

High Bridge Improvement Goals

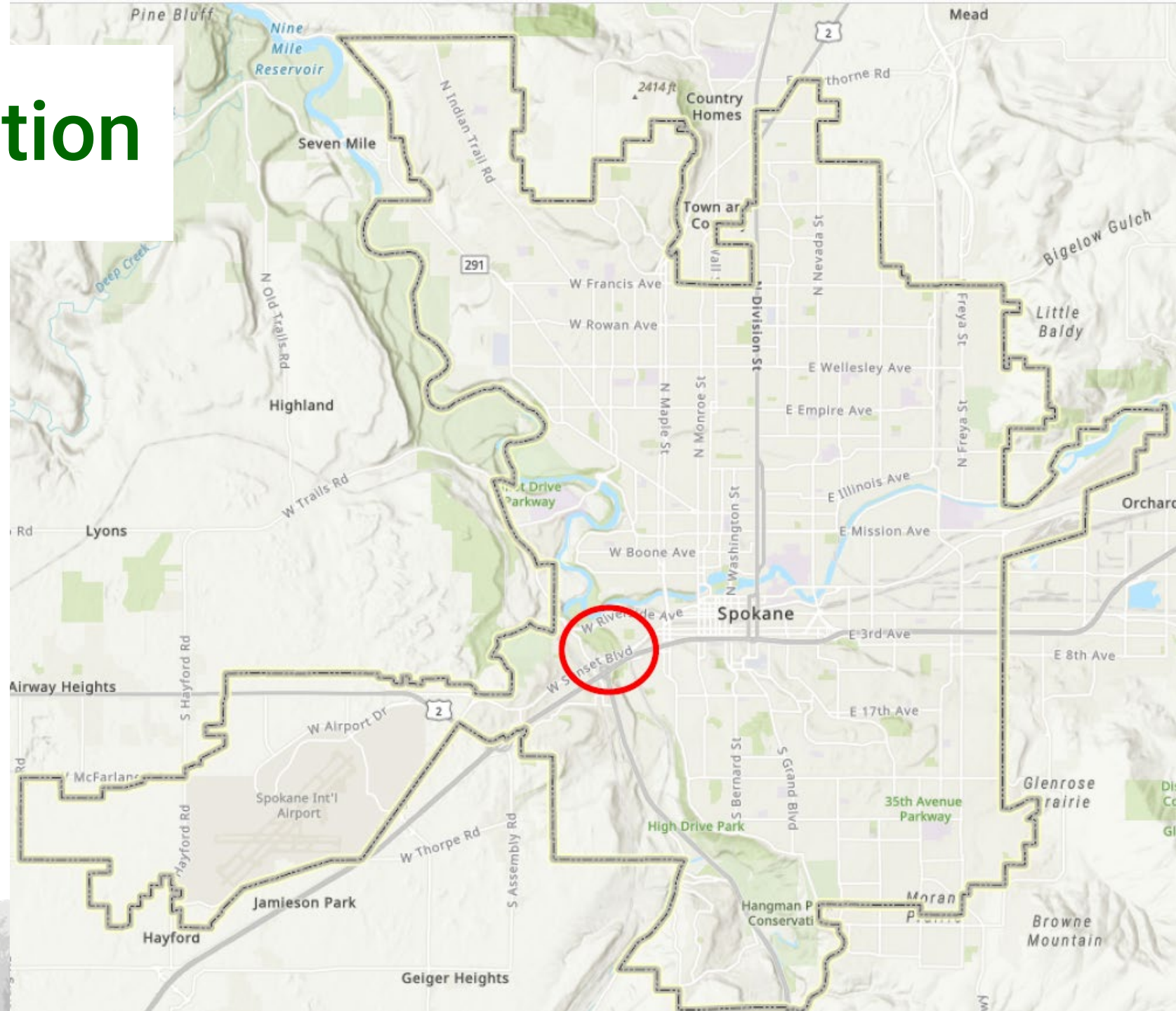
“Improve the function, capacity, and experience of the High Bridge Dog Park based on previous outreach”

High Bridge Improvement Goals

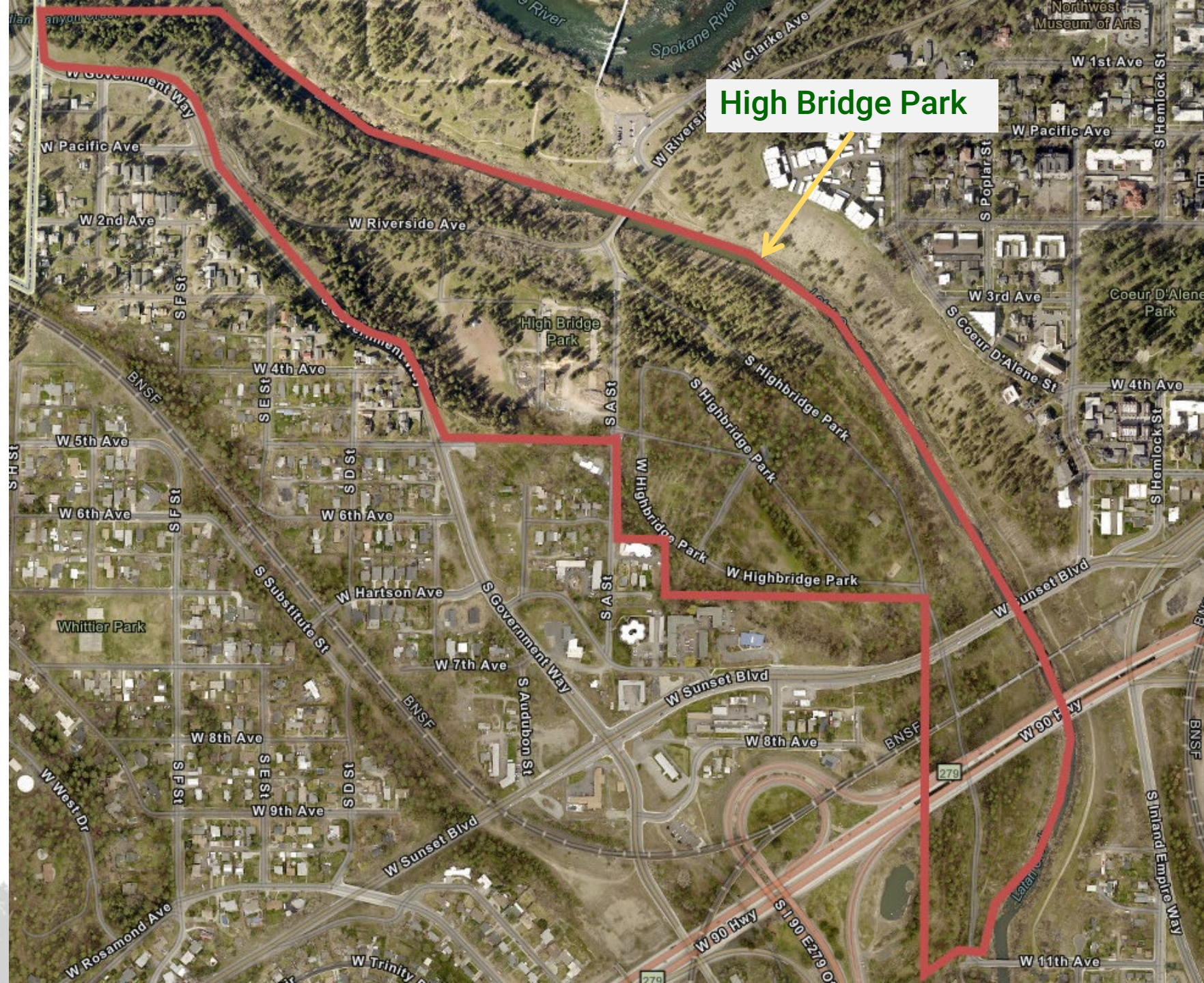
“Improve the function, capacity, and experience of the High Bridge Dog Park based on previous outreach”

- Improve Access (parking)
- Improve Accessibility (entry/handicap accessible areas/etc.)
- Improve Functionality (more space, more amenities)
- Improve Safety (lighting, tree thinning)
- Improve Maintenance & Care

Project Location

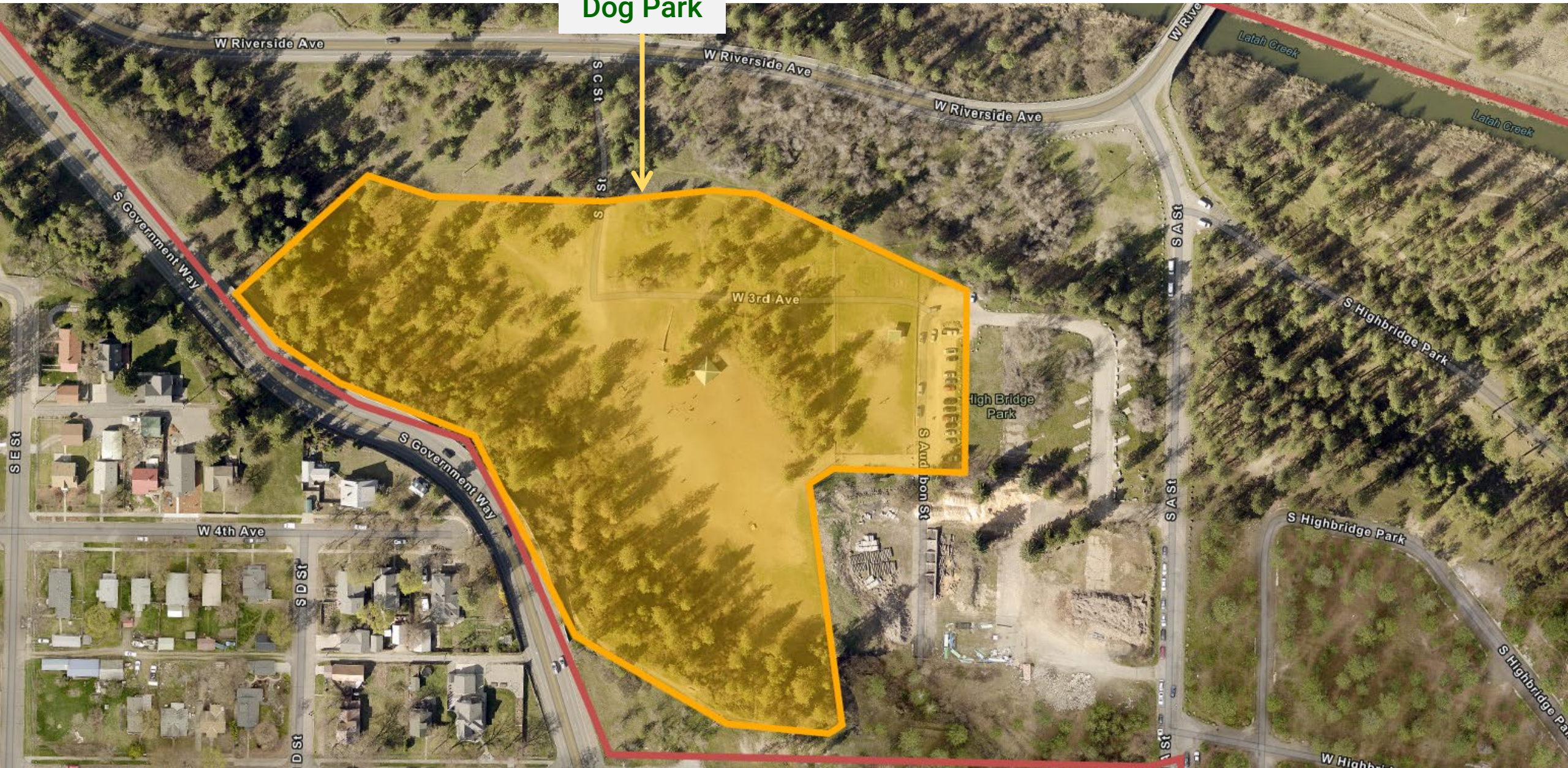


High Bridge

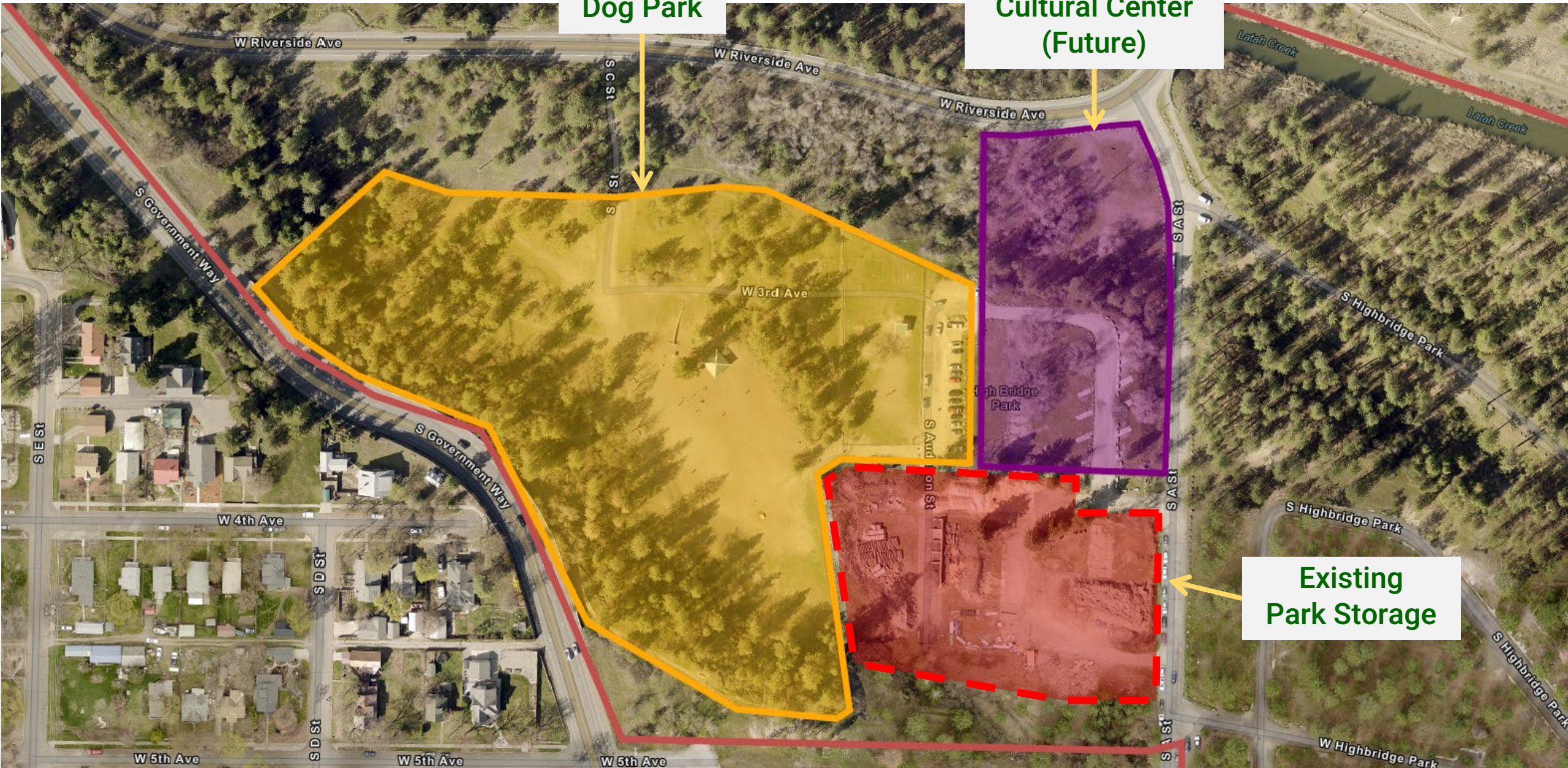


High Bridge

Existing
Dog Park



High Bridge



Existing Dog Park

American Indian Cultural Center (Future)

Existing Park Storage

High Bridge



Existing Dog Park

Park Entry

Current Entry

Previous Feedback:
“Where is the Dog Park?”



Current Entry

Previous Feedback:
“Park Not Welcoming”



Entry Improvements

Proposed Improvements:

- New Paved Entry
- Direct Access Into Dog Park



Current Parking



Current Parking

Previous Feedback:

- “Not Enough Parking”
- “Parking area not very functional – potholes, etc.”



Parking – Expand to South



Re-grade existing parking back here

Expand Parking Here

New Parking

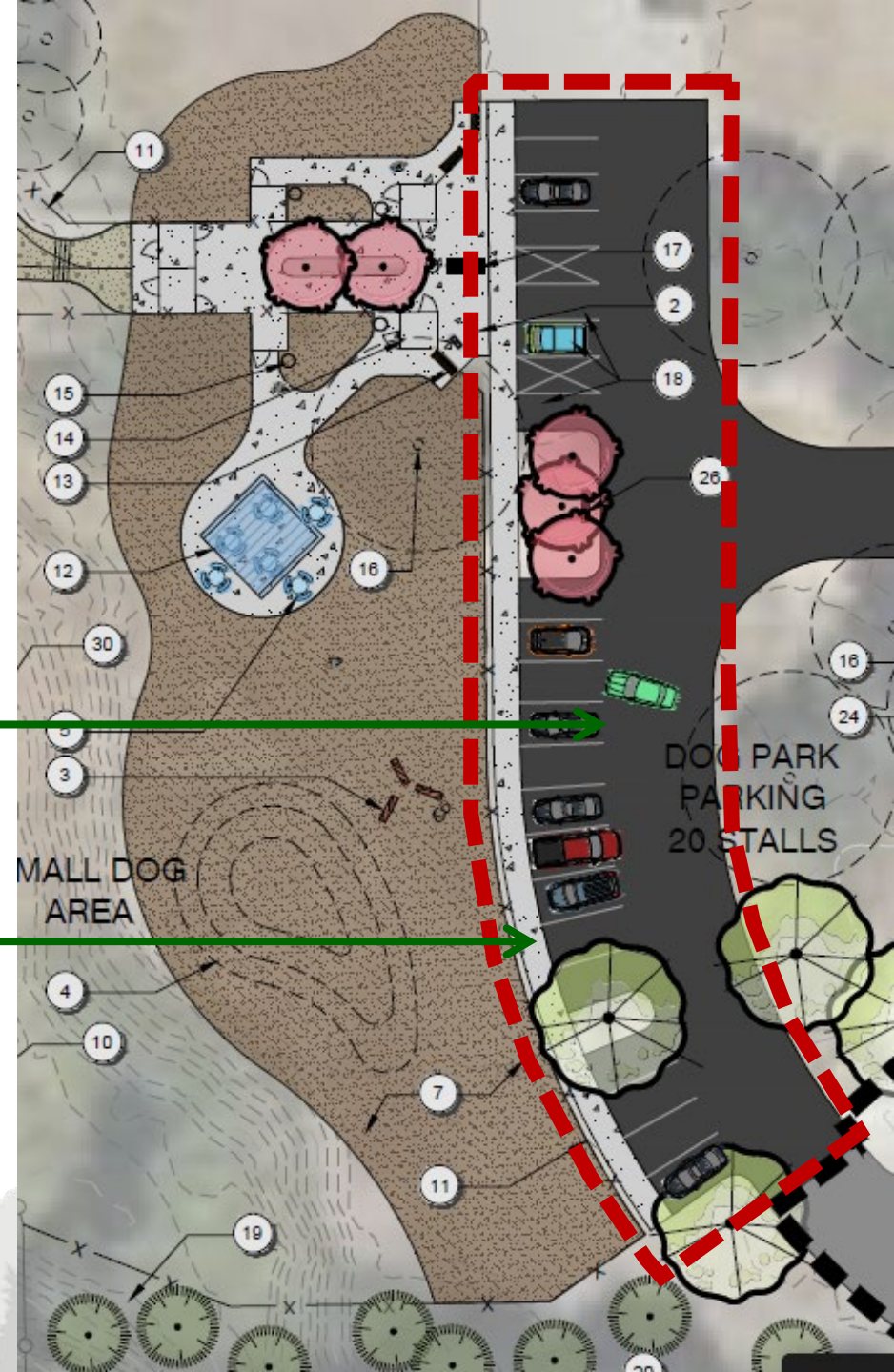
Proposed Improvements:

- New Paved Parking Expansion to South (+20 stalls)
- New Concrete Walkway
- General Area Lighting
- Re-grade existing parking for 'overflow'

← Into Dog Park

New Paved Parking

ADA Walkway



More Space

Existing
Dog Park



Add Space

More Space

Previous Feedback:

- “No ADA Accessible Large Dog Space”



More Space

Previous Feedback:

- “No ADA Accessible Large Dog Space”



More Space

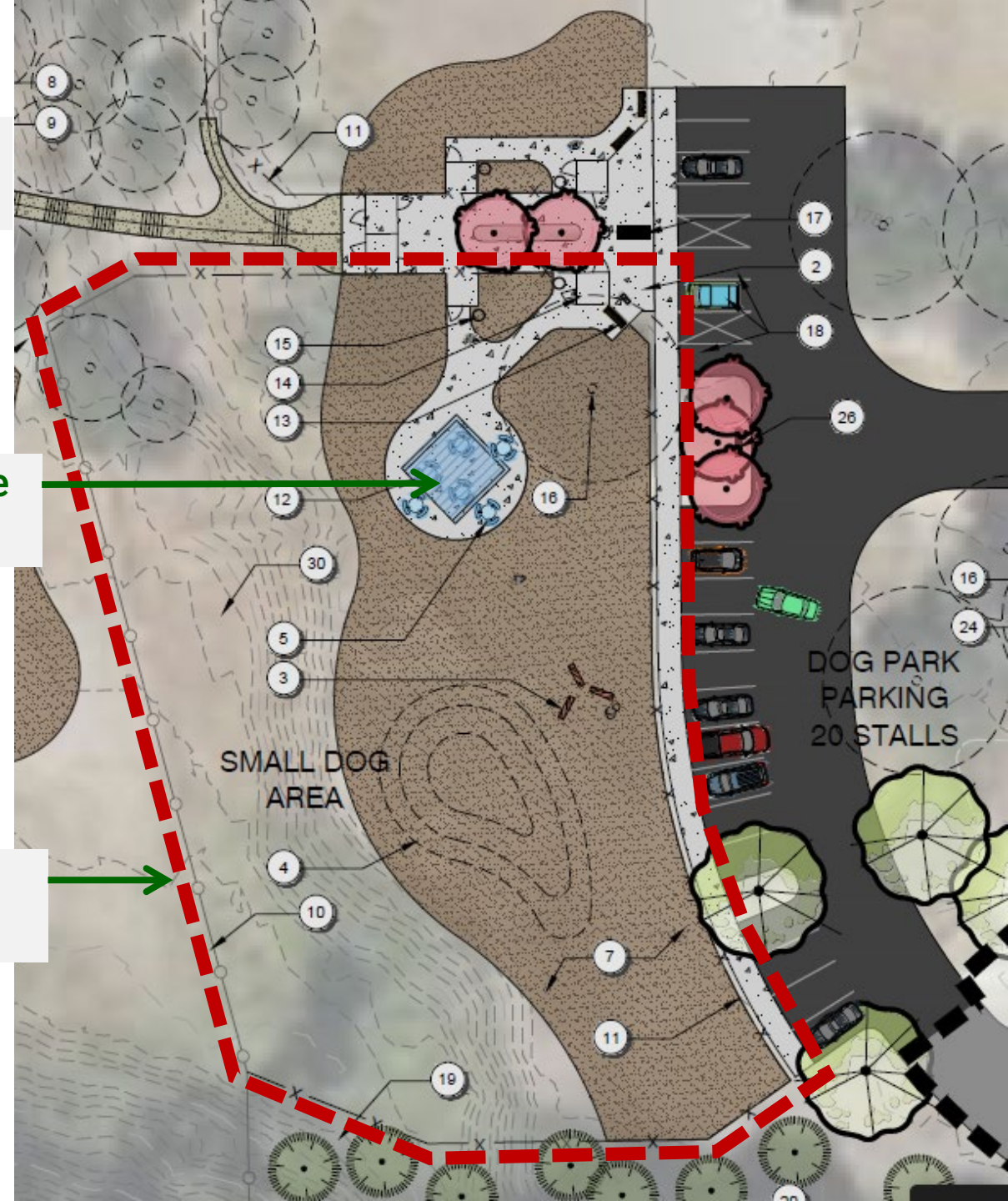
Proposed Improvements:

- New Small Dog Area south of entry
- ADA Walking Entry
- Possible New Shelter

← Into Upper Dog Park

New Concrete walk

Added Dog Park Area



Current Dog Park Entry



Current Dog Park Entry

Previous Feedback:

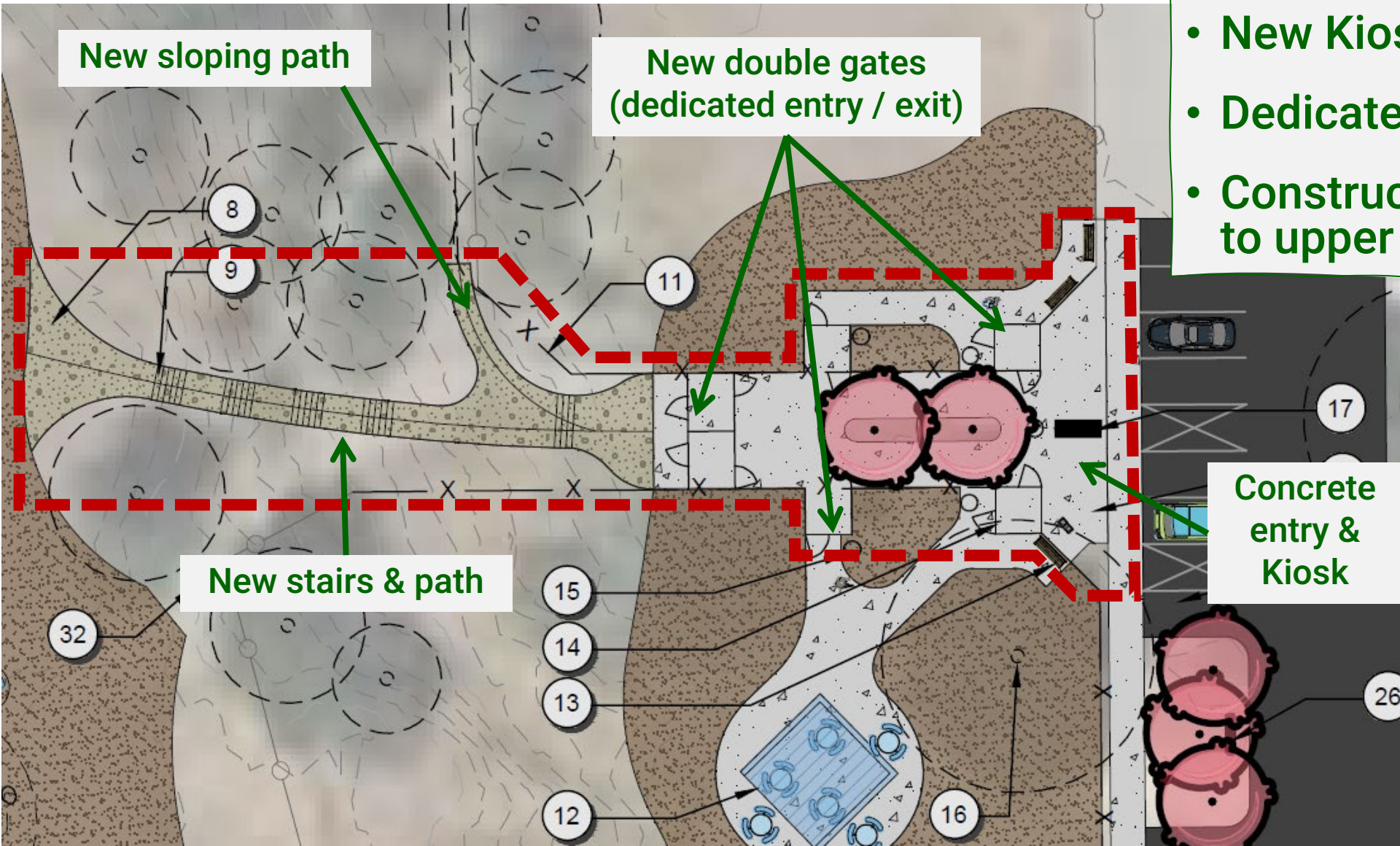
- “One entry/exit creates conflict between dogs”
- “Not ADA accessible”
- “Icy During Winter”



Dog Park Entry

Proposed Improvements:

- New Concrete Walkway
- New Kiosk
- Dedicated Entry/Exit Gates
- Construct stairs & pathway to upper dog area



New sloping path

New double gates
(dedicated entry / exit)

New stairs & path

Concrete
entry &
Kiosk

Upper Dog Area

Existing
Dog Park



Upper Dog Area

Previous Feedback:

- “Tripping Hazard at Shelter”
- “Tree Thinning needed for safety & fire”
- “Surfacing / Agility Equipment Wanted”
- “Water Doesn’t work”



Upper Dog Area

Proposed Improvements:

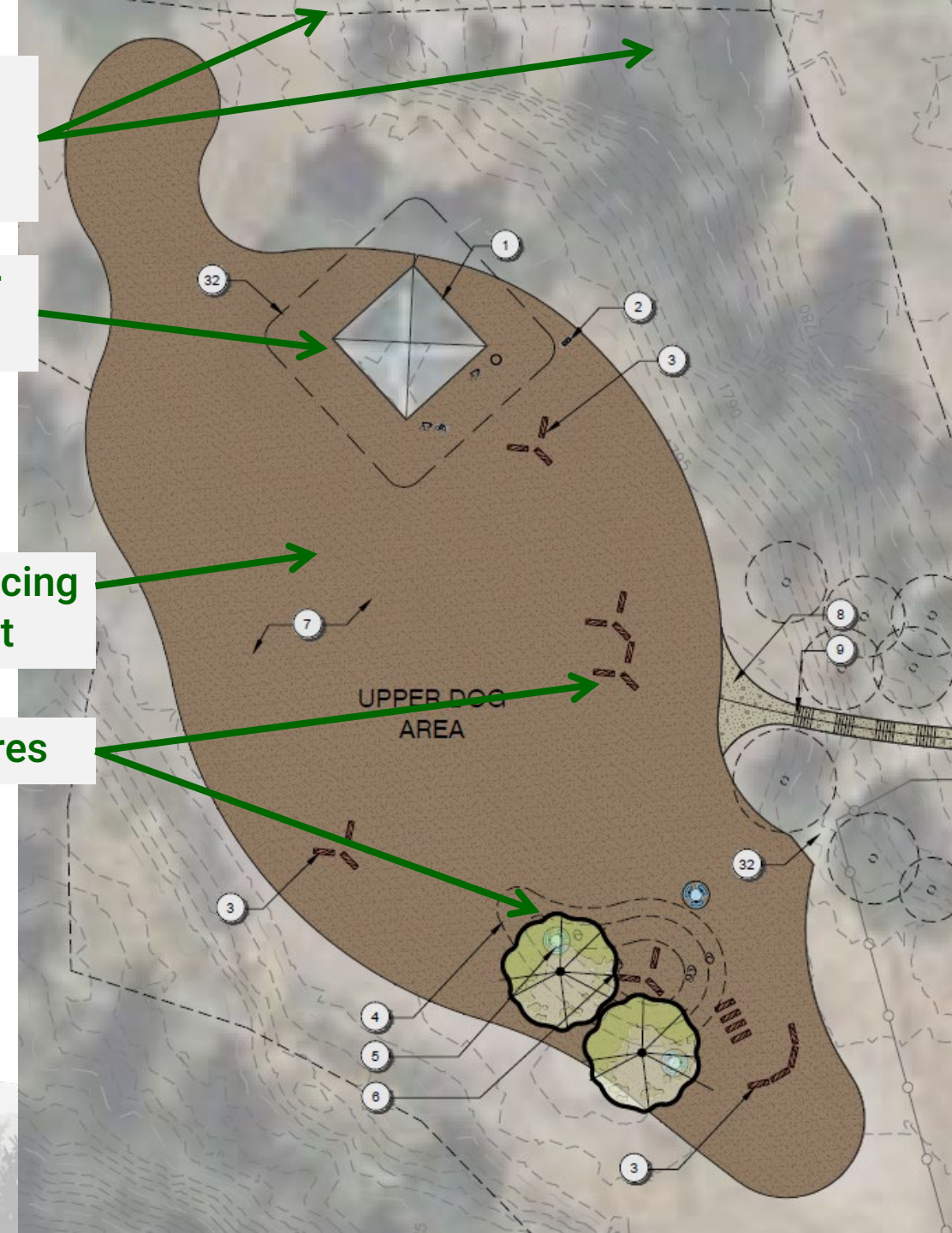
- Repair ground around shelter
- Tree Fuels reduction / thinning for fire & clear views
- Add agility features
- Add surfacing amendment
- Improved water fountain @ shelter

Fuels
Reduction /
Thinning

Ground repair
@ shelter

Potential surfacing
amendment

Agility Features



Recap of Proposed Improvements

- New Park Entry & signage – New paved access
- Add ‘south parking area’ – Add 20 paved stalls, with area lighting & ADA walkways
- Add ‘south dog park Area’ – ADA accessible, possible shelter
- New dog park entryway – ADA accessible, double entry gates, stairs & pathway to upper dog park area
- Upper Dog Park Upgrades – Repair eroded ground, add agility features
tree thinning / fuels reduction
improve water access

Schedule

- Spring – Early Summer:
 - Complete Design & Permitting
- Early Summer – Fall:
 - Construction Improvements

Comment Cards & Feedback on Priorities