



COCHRAN DOWNRIVER STORMWATER FACILITY MASTER PLANNING



DOWNRIVER PARK

LEGEND

- ACTIVE RECREATION
- STORMWATER SWALE AREA
- PARKING
- PROPOSED RETAINING WALL
- 8-10' PAVED NON-MOTORIZED TRAIL
- HIKING TRAIL
- UNIMPROVED SINGLE TRACK
- RIVER ACCESS TRAIL
- EXISTING ROADS
- RAFTER TURN AROUND AND SERVICE ACCESS
- EMERGENCY ACCESS AND WALKING PATH
- 2 RAIL FENCE
- APPROXIMATE LOCATION OF 48" PIPE OPTION
- APPROXIMATE LOCATION OF ALTERNATIVE PIPE OPTION THROUGH GOLF COURSE
- 48" PIPELINE CONSTRUCTED WITH PROVISIO GRANT
- 200' AND 250' SHORELINE BUFFERS
- GATEWAY
- PROPOSED RAFT PUT IN/TAKE OUT





COCHRAN DOWNRIVER STORMWATER FACILITY MASTER PLANNING



DOWNRIVER PARK



LEGEND

- ACTIVE RECREATION
- STORMWATER SWALE AREA
- PARKING
- PROPOSED RETAINING WALL
- 8-10' PAVED NON-MOTORIZED TRAIL
- HIKING TRAIL
- UNIMPROVED SINGLE TRACK
- RIVER ACCESS TRAIL
- EXISTING ROADS
- RAFTER TURN AROUND AND SERVICE ACCESS
- EMERGENCY ACCESS AND WALKING PATH
- 2 RAIL FENCE
- APPROXIMATE LOCATION OF 48" PIPE OPTION
- APPROXIMATE LOCATION OF ALTERNATIVE PIPE OPTION THROUGH GOLF COURSE
- 48" PIPELINE CONSTRUCTED WITH PROVISIO GRANT
- 200' AND 250' SHORELINE BUFFERS
- GATEWAY
- PROPOSED RAFT PUT IN/TAKE OUT





COCHRAN DOWNRIVER STORMWATER FACILITY MASTER PLANNING



DOWNRIVER PARK

DISC GOLF COURSE



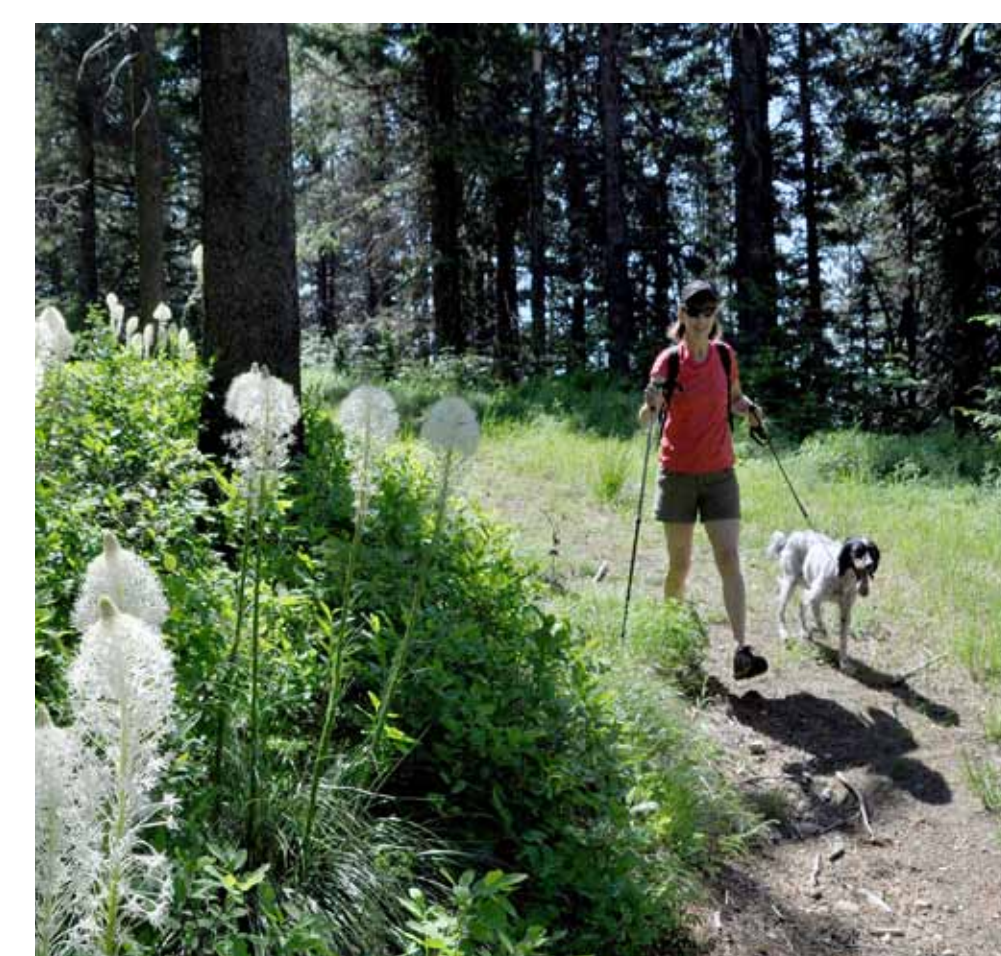
PORTA-POTTY ENCLOSURE



PARKING LOT WITH LIGHTING



ADA ACCESSIBLE WATER FOUNTAIN WITH PET BOWL



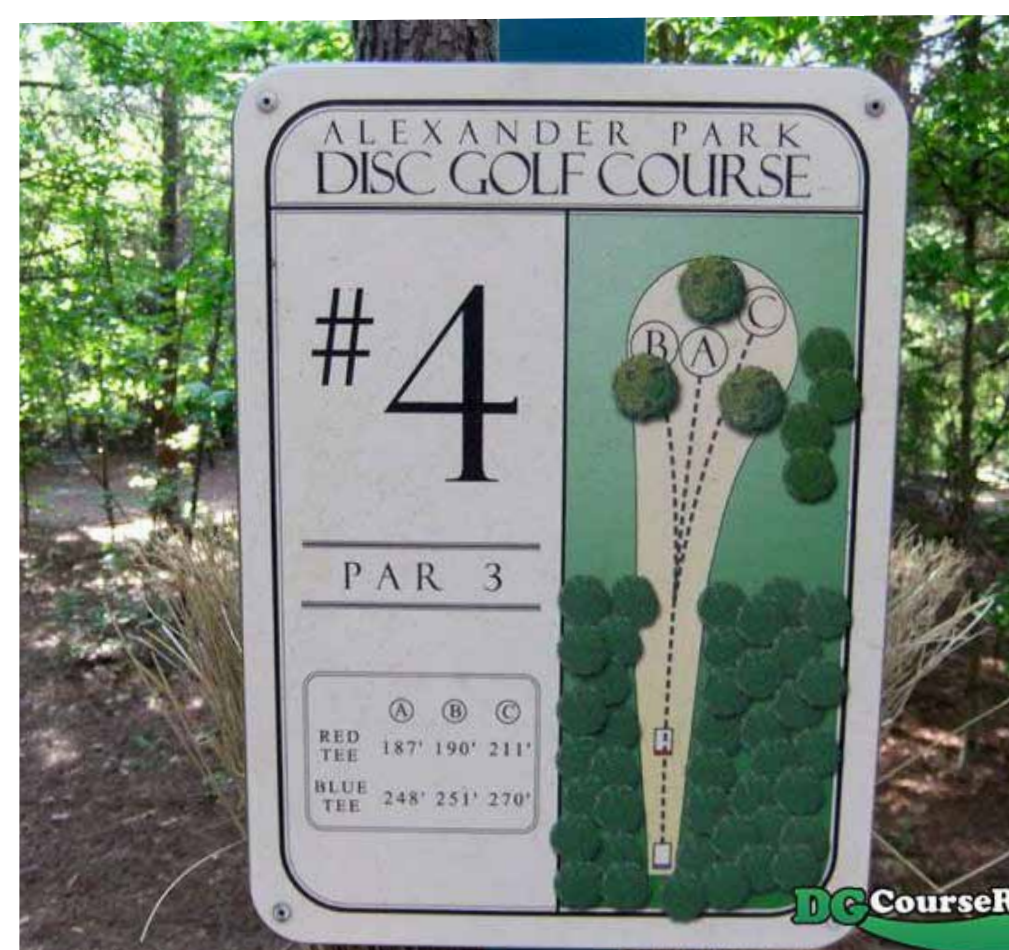
IMPROVED TRAILS



TRASH RECEPTACLES



UPDATED BASKETS



UPDATED DISC GOLF SIGNAGE



WAYFINDING SIGNAGE



UPDATED DISC GOLF TEE PADS

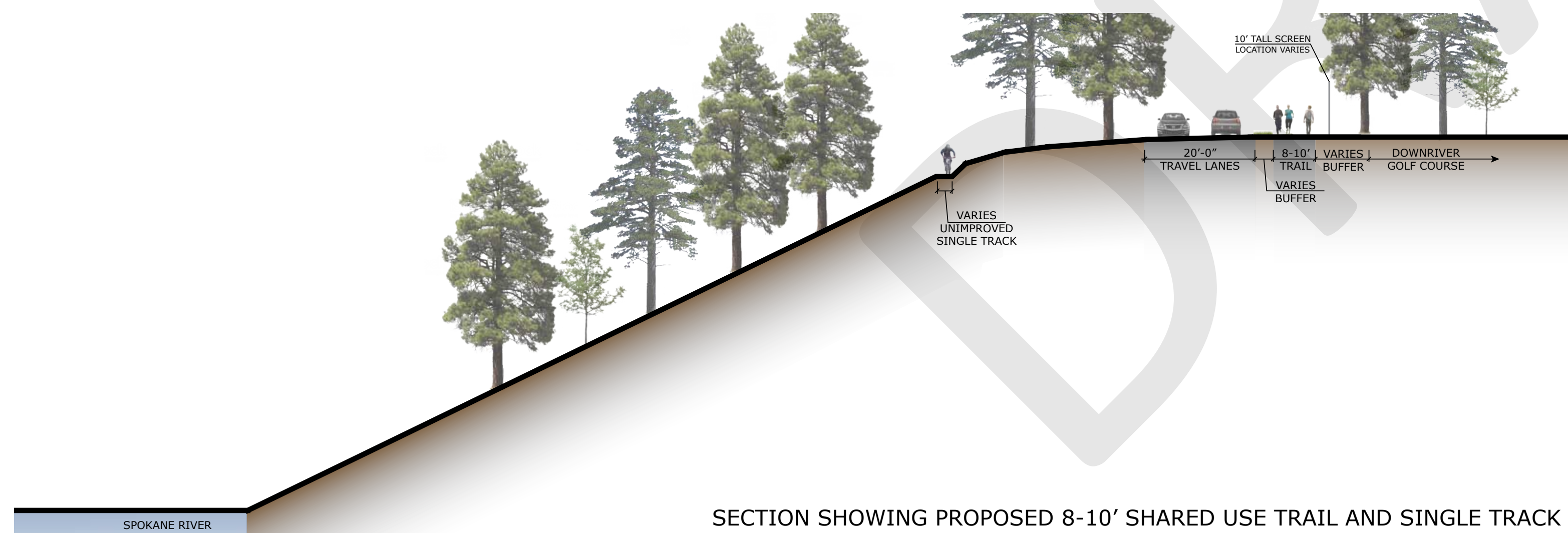


BENCHES



PROPOSED SHARED USE TRAIL NORTH OF DOWNRIVER DRIVE

TJ MEENACH BRIDGE



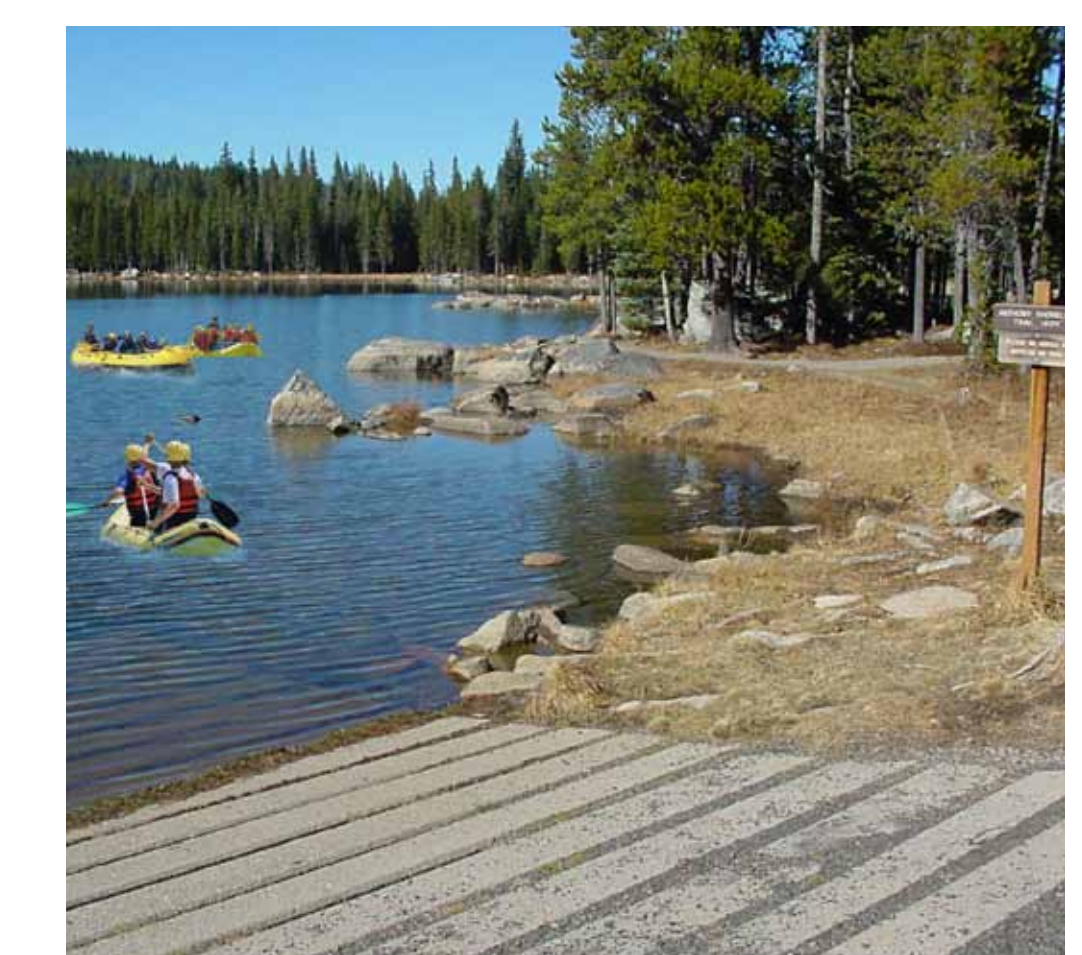
SECTION SHOWING PROPOSED 8-10' SHARED USE TRAIL AND SINGLE TRACK



PORTA-POTTY ENCLOSURE



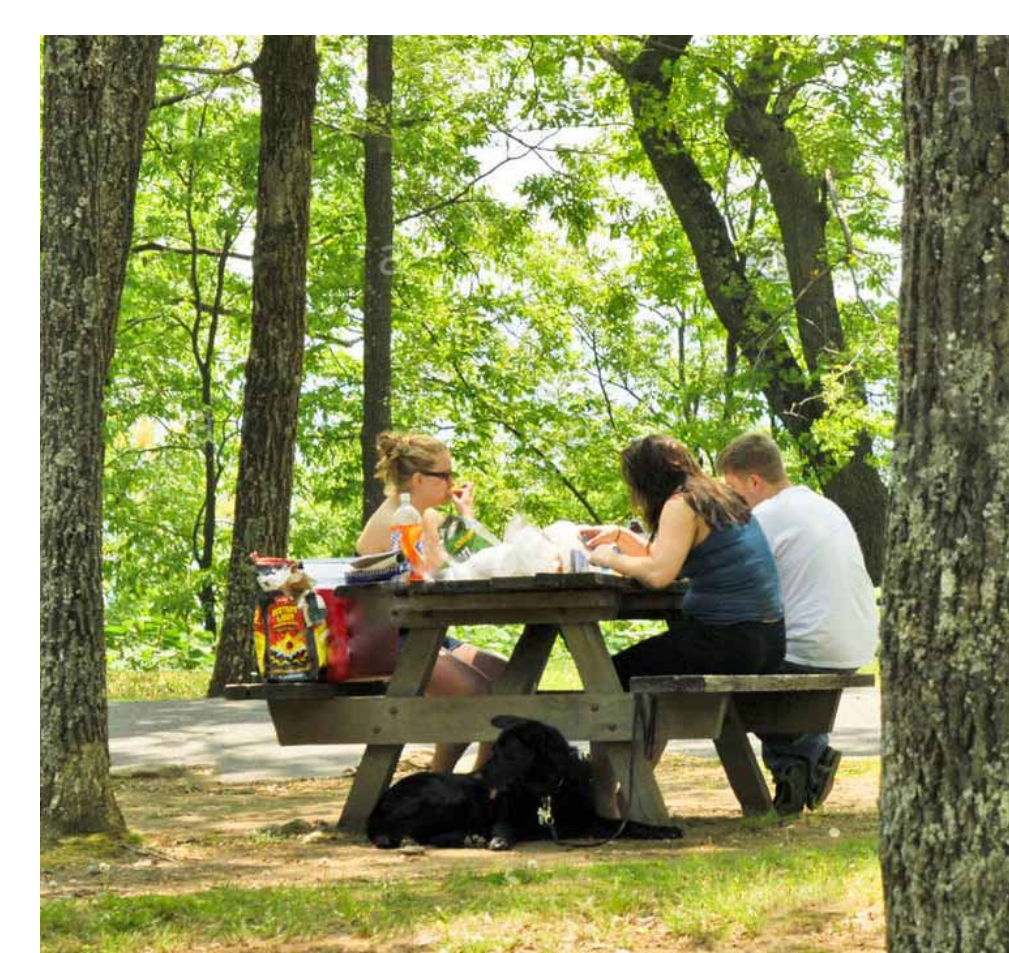
TRASH RECEPTACLES



RAFT PUT IN



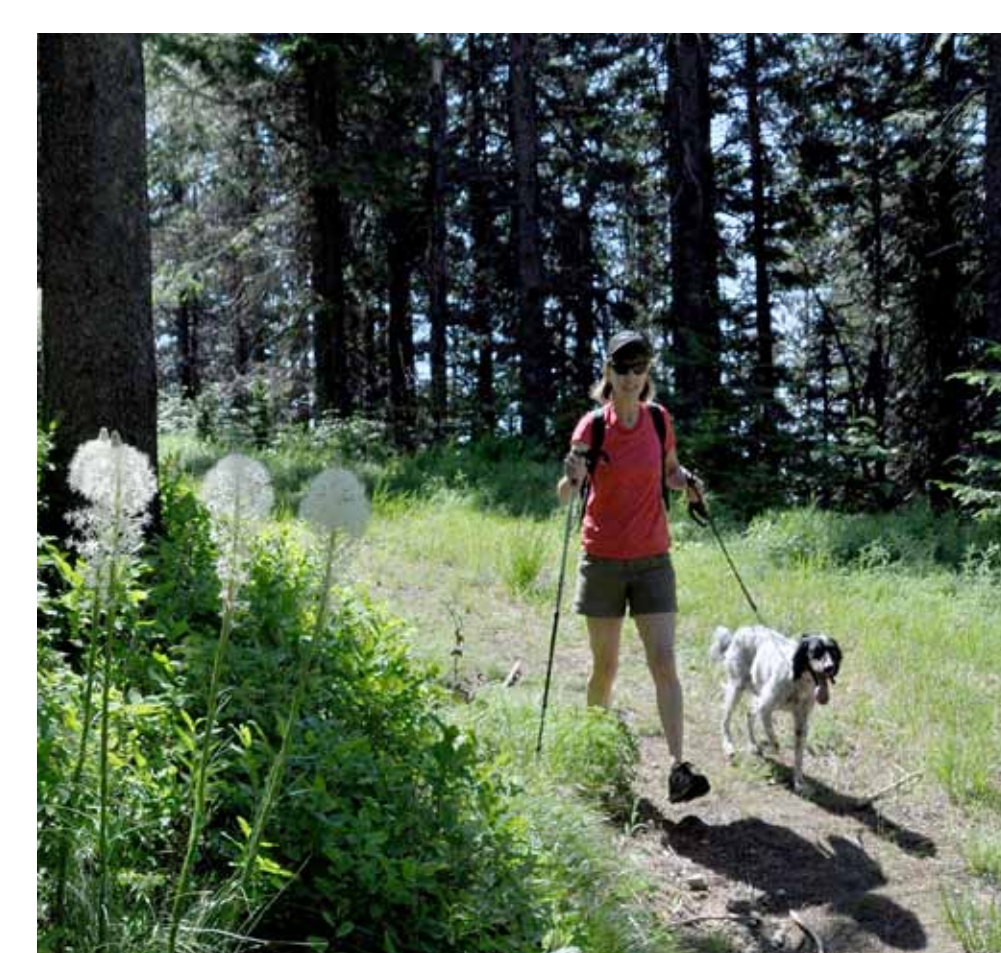
PARKING LOT WITH LIGHTING



PICNIC TABLES



PARKING LOT WITH LIGHTING



IMPROVED TRAILS



ADA RAFT ACCESS



SPLIT RAIL FENCE

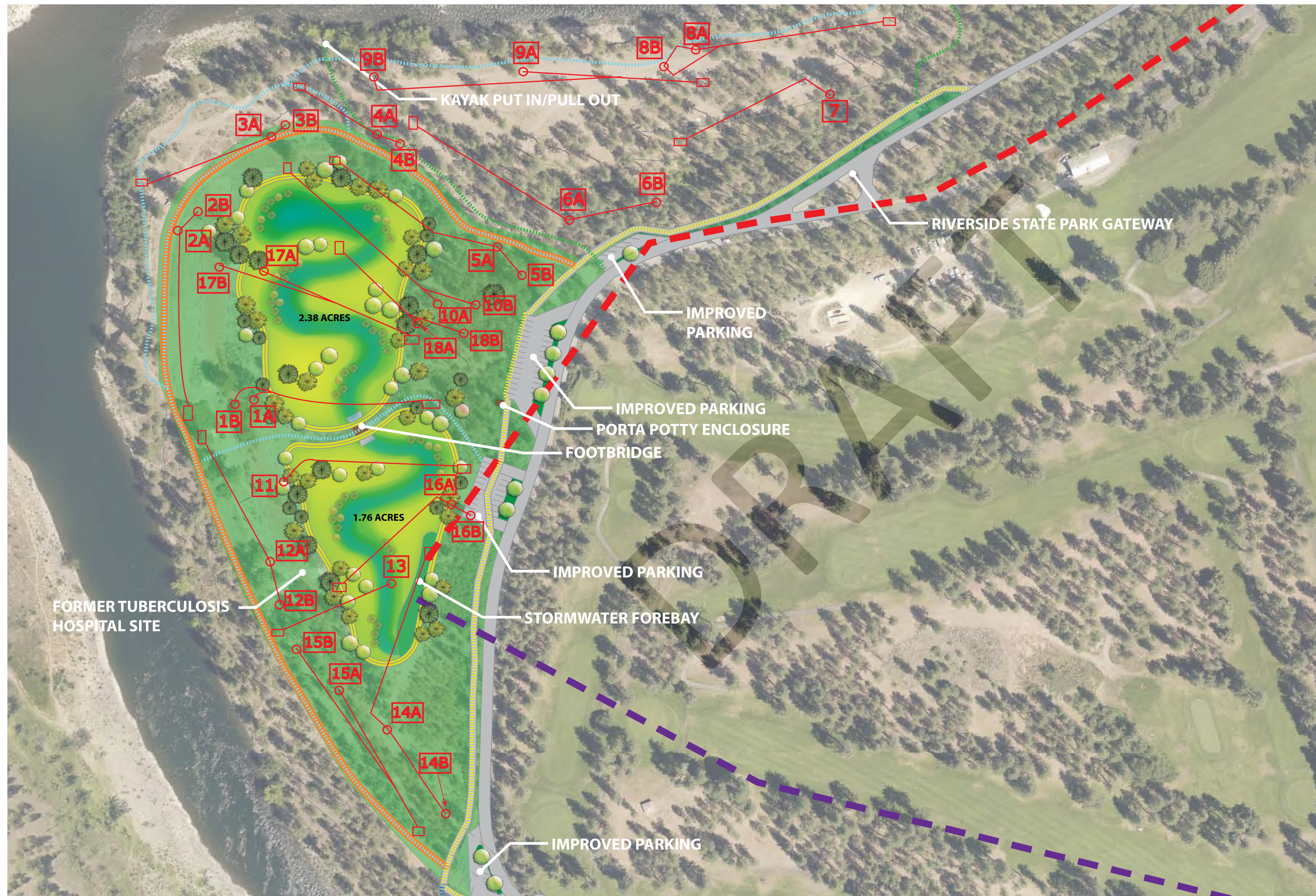




COCHRAN DOWNRIVER STORMWATER FACILITY MASTER PLANNING



DOWNRIVER PARK



LEGEND

- ACTIVE RECREATION
- STORMWATER SWALE AREA
- PARKING
- PROPOSED RETAINING WALL
- 8-10' PAVED NON-MOTORIZED TRAIL
- HIKING TRAIL
- UNIMPROVED SINGLE TRACK
- RIVER ACCESS TRAIL
- EXISTING ROADS
- RAFTER TURN AROUND AND SERVICE ACCESS
- EMERGENCY ACCESS AND WALKING PATH
- 2 RAIL FENCE
- APPROXIMATE LOCATION OF 48" PIPE OPTION
- APPROXIMATE LOCATION OF ALTERNATIVE PIPE OPTION THROUGH GOLF COURSE
- 48" PIPELINE CONSTRUCTED WITH PROVISIO GRANT
- 200' AND 250' SHORELINE BUFFERS
- GATEWAY
- PROPOSED RAFT PUT IN/TAKE OUT

EXISTING DISC GOLF COURSE

MARCH 28, 2018





COCHRAN DOWNRIVER STORMWATER FACILITY MASTER PLANNING



DOWNRIVER PARK

LEGEND

- ACTIVE RECREATION
- STORMWATER SWALE AREA
- PARKING
- PROPOSED RETAINING WALL
- 8-10' PAVED NON-MOTORIZED TRAIL
- HIKING TRAIL
- UNIMPROVED SINGLE TRACK
- RIVER ACCESS TRAIL
- EXISTING ROADS
- RAFTER TURN AROUND AND SERVICE ACCESS
- EMERGENCY ACCESS AND WALKING PATH
- 2 RAIL FENCE
- APPROXIMATE LOCATION OF 48" PIPE OPTION
- APPROXIMATE LOCATION OF ALTERNATIVE PIPE OPTION THROUGH GOLF COURSE
- 48" PIPELINE CONSTRUCTED WITH PROVISIO GRANT
- 200' AND 250' SHORELINE BUFFERS
- GATEWAY
- PROPOSED RAFT PUT IN/TAKE OUT

