

Make Beacon Hill Public Phase 2

Evergreen East Mountain Bike Alliance Update
March 10, 2024



+



Meeting Agenda & Housekeeping

Agenda

- Recap of Make Beacon Hill Phase 1 – *Previously Completed*
- Overview of Make Beacon Hill Public – Phase 2 (*ongoing*)
- Brief lookahead Make Beacon Hill Public – Phase 3 (*future*)

- Hand-off to Rob for Private Development update

Meeting Agenda & Housekeeping

Agenda

- Recap of Make Beacon Hill Phase 1 – *Previously Completed*
- Overview of Make Beacon Hill Public – Phase 2 (*ongoing*)
- Brief lookahead Make Beacon Hill Public – Phase 3 (*future*)

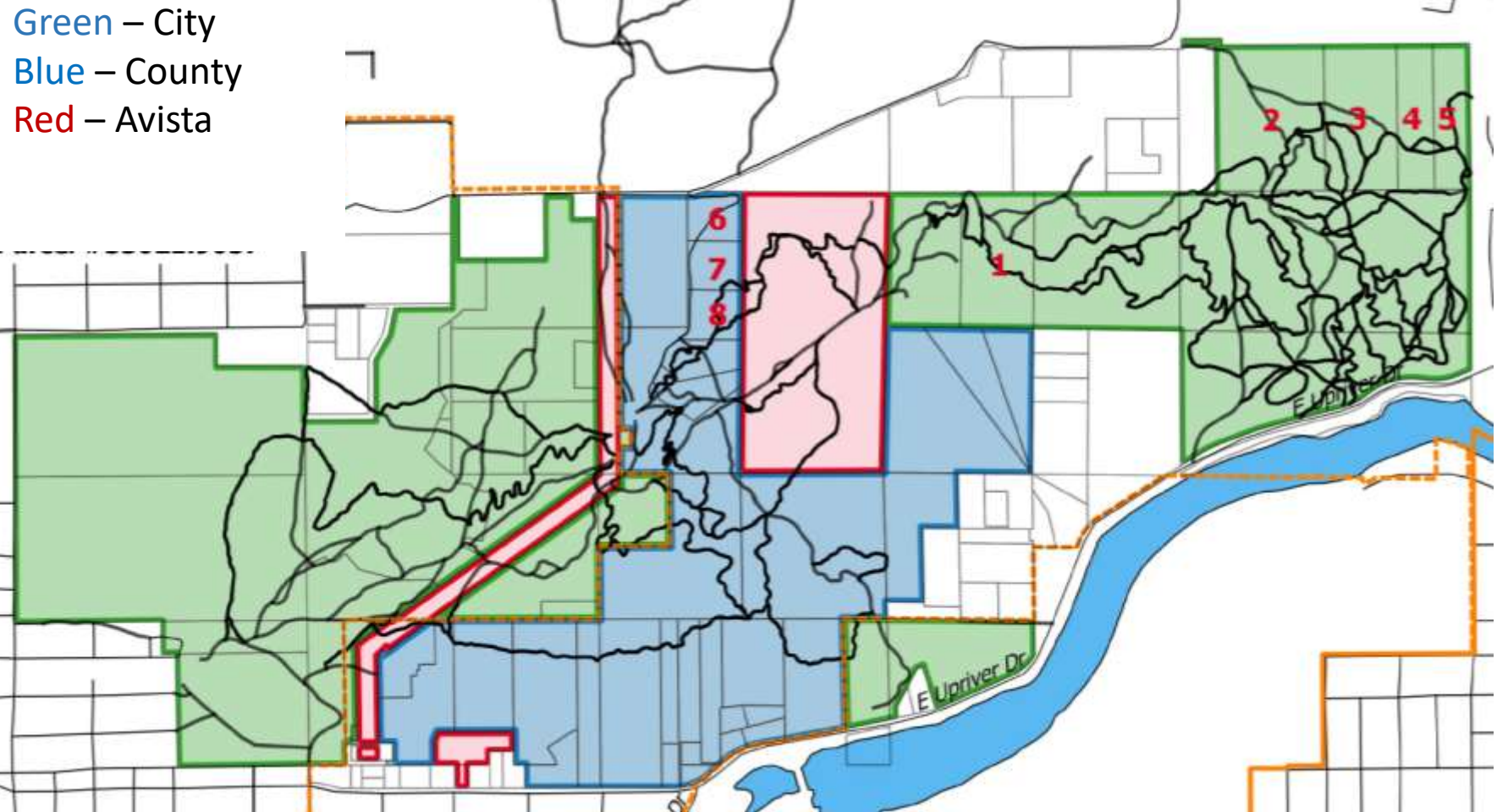
- Hand-off to Rob for Private Development update

Beacon Hill

- 2016 beacon hill preservation plan

- Established joint vision for trail plan

- Suggested ownership



Phase 1 acquisition (2018-2021)



	Properties Proposed for Acquisition
	Proposed City-Ownership

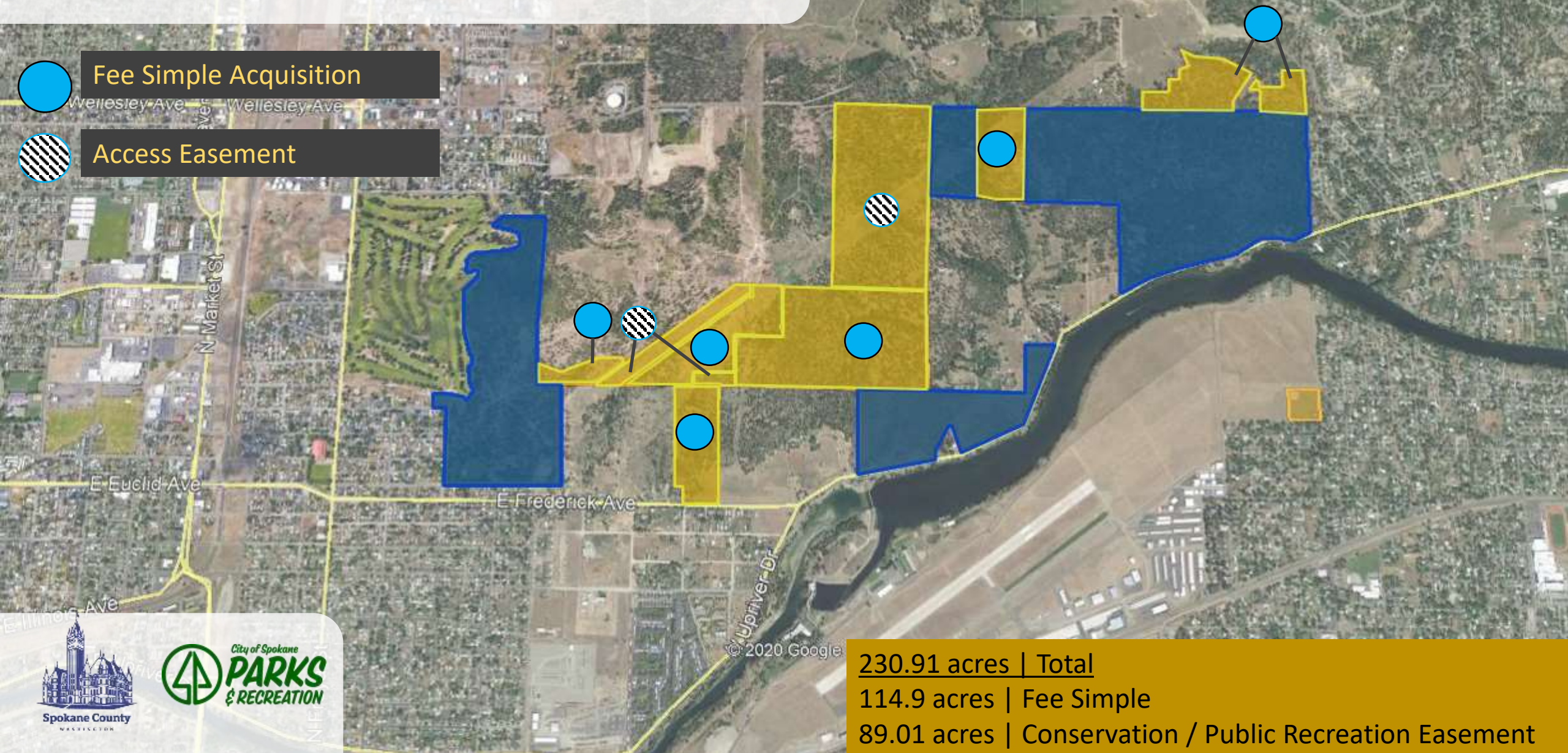


Property Acquisition Concept

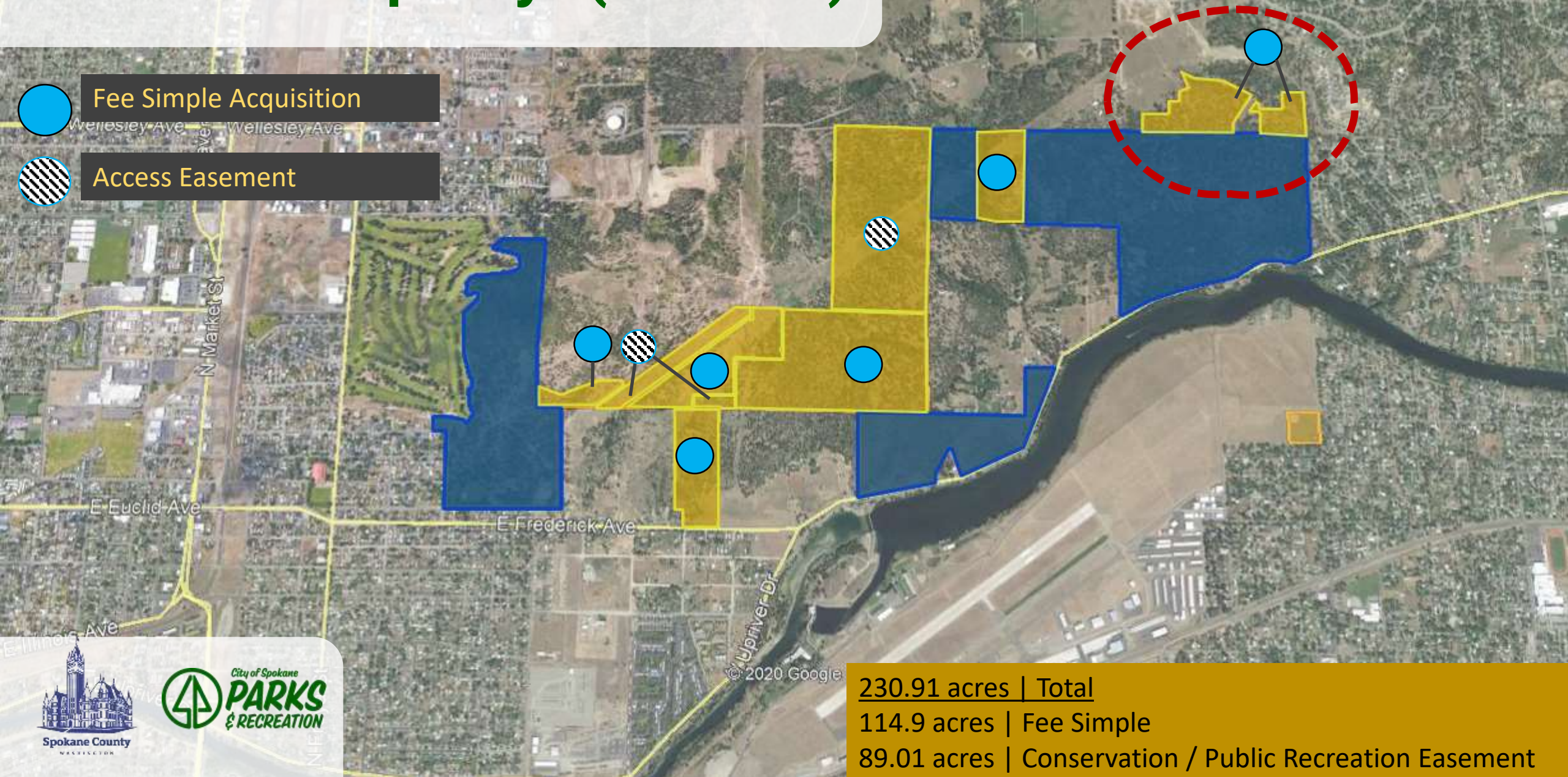
- ¹Paras Property:
 - No Conditions
- ²Collin Property:
 - Administrative Acquisition - No Conditions
- ³Rayner, Banta and Combs Properties:
 - Closing Contingent Upon Grant Award
- ⁴Avista Property:
 - Conservation / Public Recreation Easement to be donated



Acquired 230 acres



'Paras Property' (19.6ac)



Phase 1 Support

AT&T 12:02 PM

secure.givelively.org

MOUNTAIN BIKER CALL TO ACTION

Save Beacon Hill From Further Development



\$15,005 of \$15,000 144 Donors

MAKE A DONATION
#makebeaconpublic
by MakeBeaconPublic



Phase 1 Cost



Make Beacon Hill Public Funding – Funding Sources

• County Funding:	\$1,391,963	
• WA State (RCO) funding:	\$1,000,000	
• Federal (LWCF) funding:	\$500,000	
• Avista Corporation:	\$375,000	} 12.7% non-government
• Evergreen Mountain Bike Alliance:	\$20,000	
• Inland NW Land Conservancy:	\$25,000	
Project Total:	\$3,311,963	

On to 'Phase 2'

Agenda

- Recap of Make Beacon Hill Phase 1 – *Previously Completed*
- Overview of Make Beacon Hill Public – Phase 2 (*ongoing*)
- Brief lookahead Make Beacon Hill Public – Phase 3 (*future*)

- Hand-off to Rob for Private Development update

Phase 2 – Access (2022-2025)

**Beacon Hill
Conservation Area**

**Camp Sekani
Trailhead**

**John H.
Shields
Trailhead**



Shields Park – Site 1

Beacon Hill
Conservation Area

John H.
Shields
Trailhead



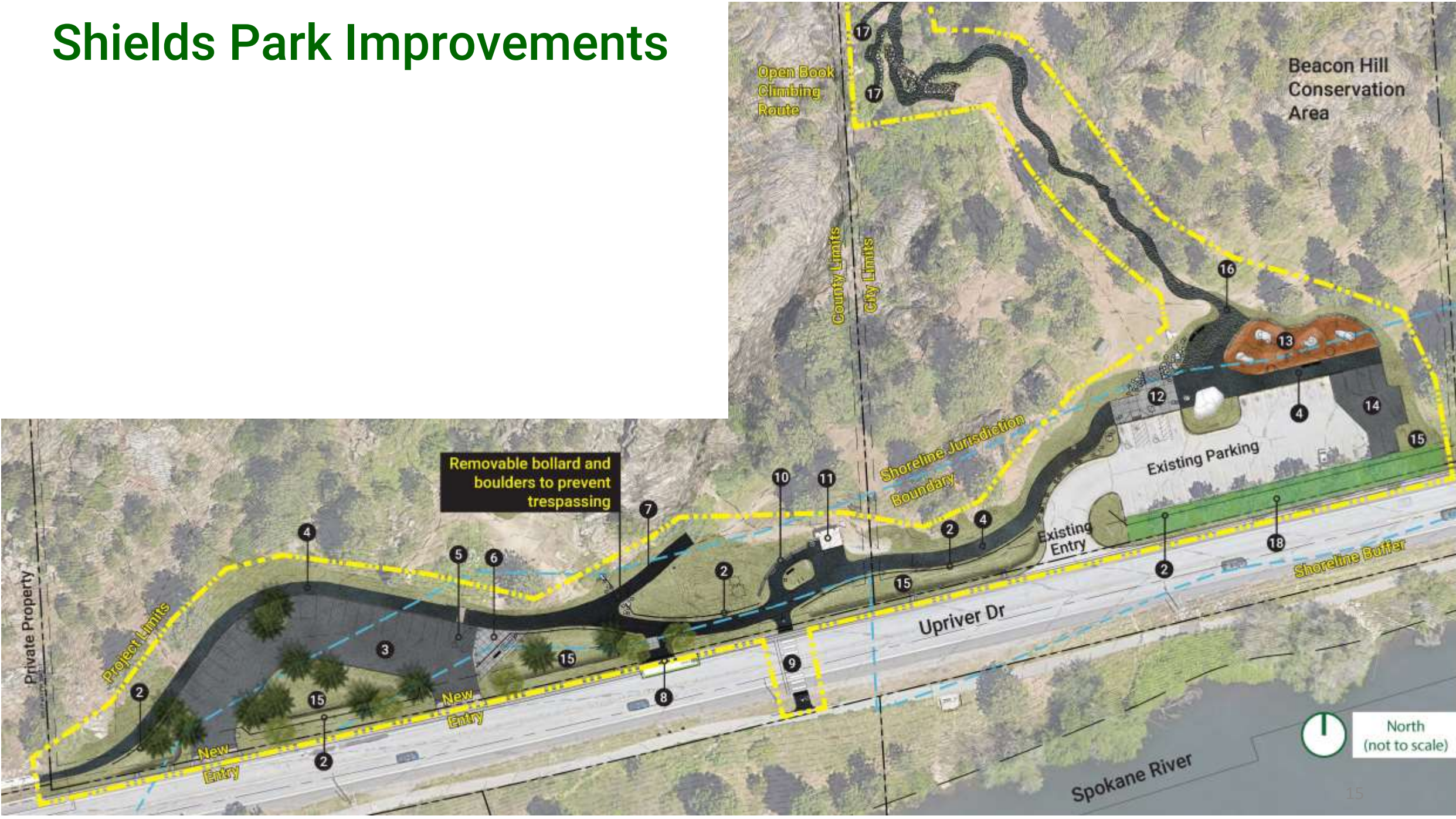
Shields Park – Site 1



Shields Park – Site 1

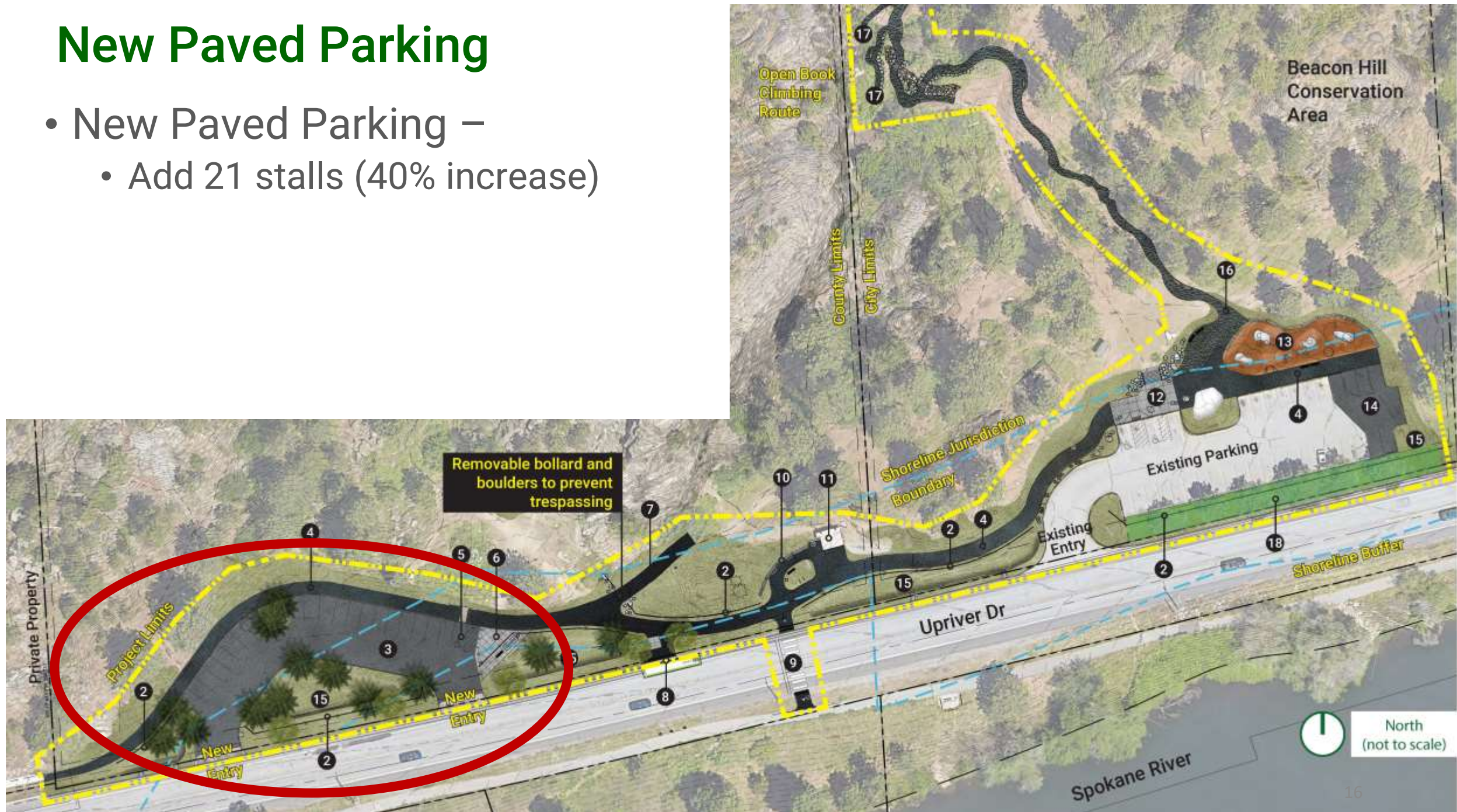


Shields Park Improvements



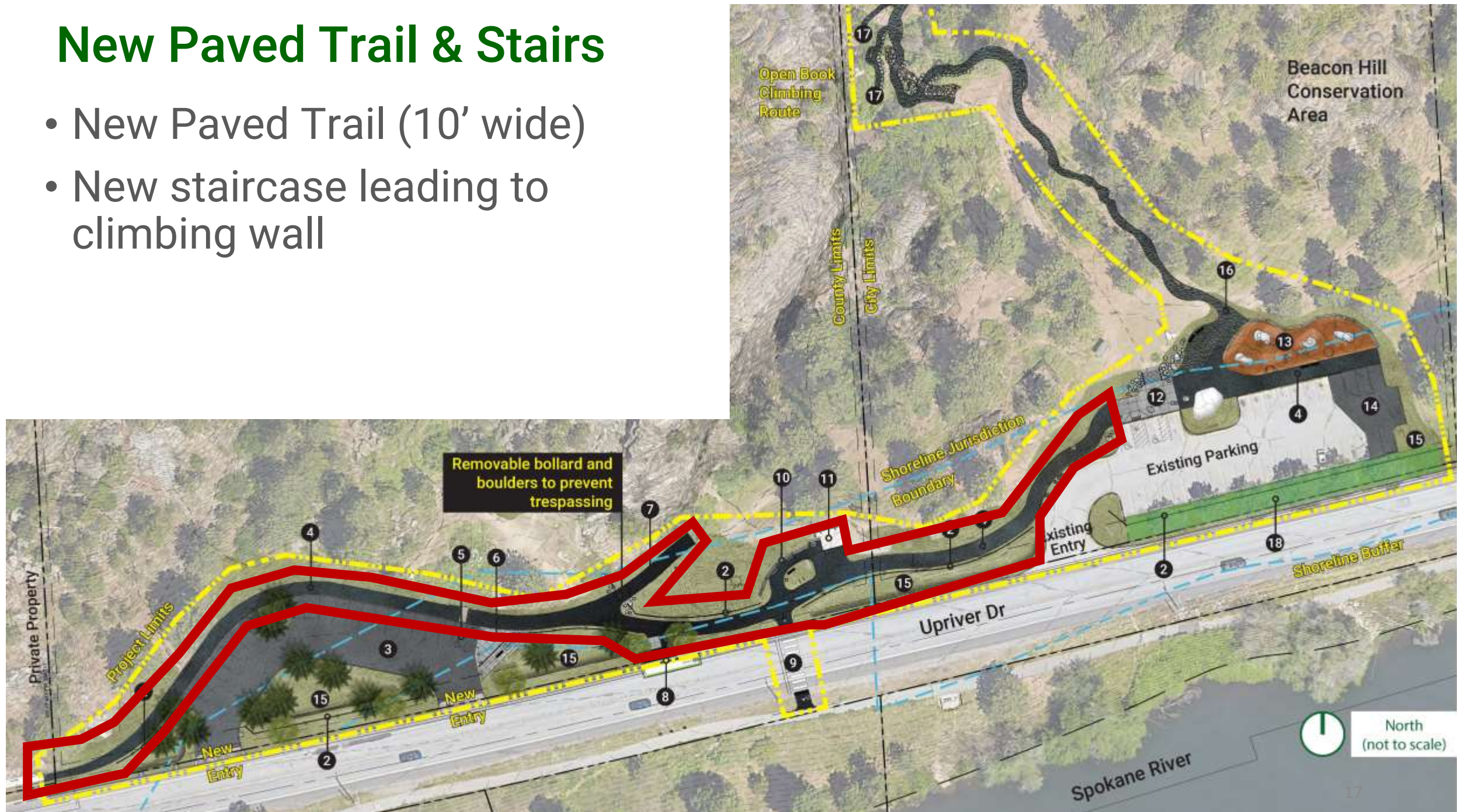
New Paved Parking

- New Paved Parking –
 - Add 21 stalls (40% increase)



New Paved Trail & Stairs

- New Paved Trail (10' wide)
- New staircase leading to climbing wall



New Trail Connection

- New Crosswalk w/ Ped Beacon
- Improve connection to centennial trail



New Trail Connection

- Push Button RRFB



New Adaptive Trail

- New 'Adaptive Trail' / challenge course to rock face



New Adaptive Trail

- New 'Adaptive Trail' / challenge course to rock face



New Adaptive Trail

- New 'Adaptive Trail' / challenge course to rock face



New Playground

- New 'Boulder Playground'



New Playground

- New 'Boulder Playground'



New Playground



1

Montana Special PB005 (Granite)



Montana Special PB005

Age Group: 5-12

SCHEMATIC DESIGN
NOT FOR CONSTRUCTION



All IDS projects are designed to meet or exceed ASTM 1487. Please consult ASTM 1487 for required hazard warning and signage specifications. Not all equipment may be appropriate for all children. Supervision is required. ASTM compliant safety surfacing is required under and around all play equipment. The Americans with Disabilities Act (ADA) may require your play area to be accessible, please consult with an ADA professional to ensure compliance.

Date

11/25/2024

Drawing Title

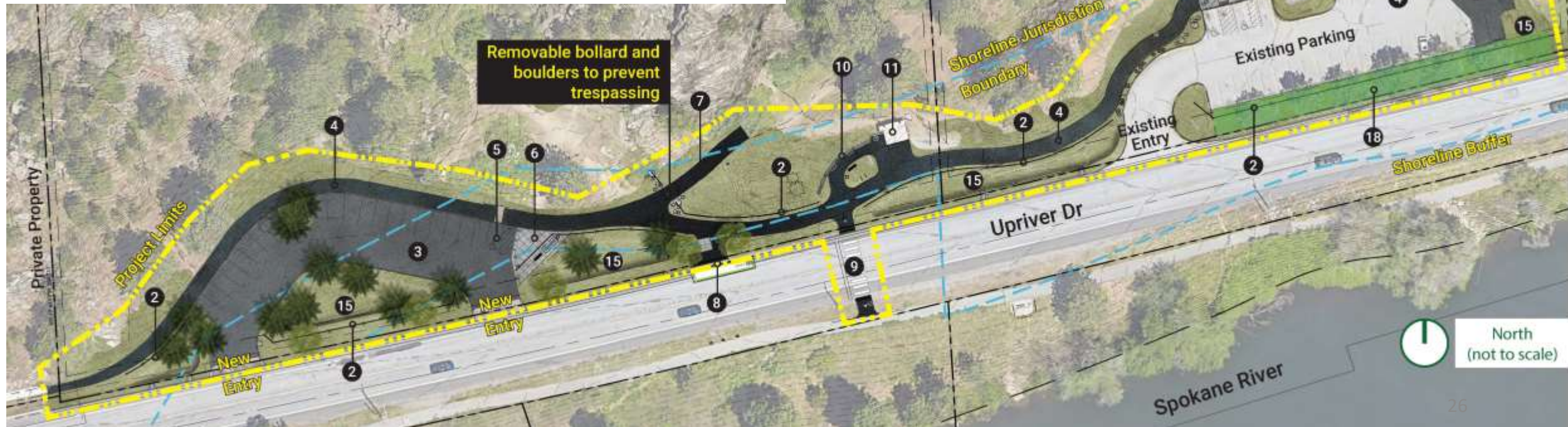
Perspective

Sheet #

A.01.1

Misc. Improvements

- Landscape enhancements
- Drainage enhancements
- Curb & Gutter
- Parking lot lighting
- Trailhead Cameras



Camp Sekani Park – Site 2

Beacon Hill
Conservation Area

Camp Sekani
Trailhead



Sekani



New Paved Parking

- New 'base amount' Paved Parking (84 stalls)



New Paved Parking

- 'Extended Parking - +14 stalls
- 98 stalls total
- 54% increase from today



Parking is terraced

- Terraced lot with 'redi-rock' wall





Trees

- Preserve large Douglas Fir



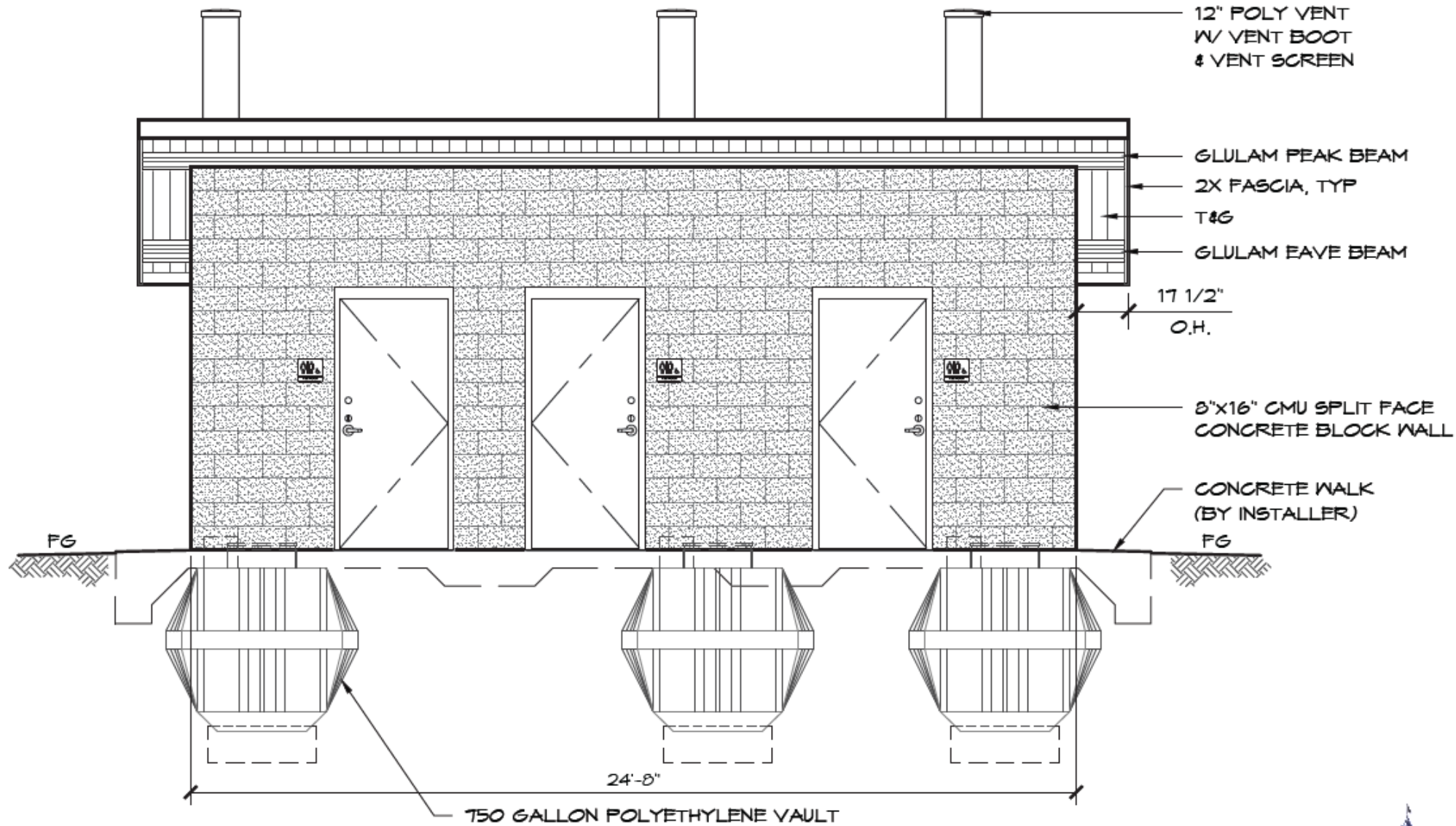
Relocated Entry

- Relocated entry for improve efficiency
- Manual Gate



New Restroom

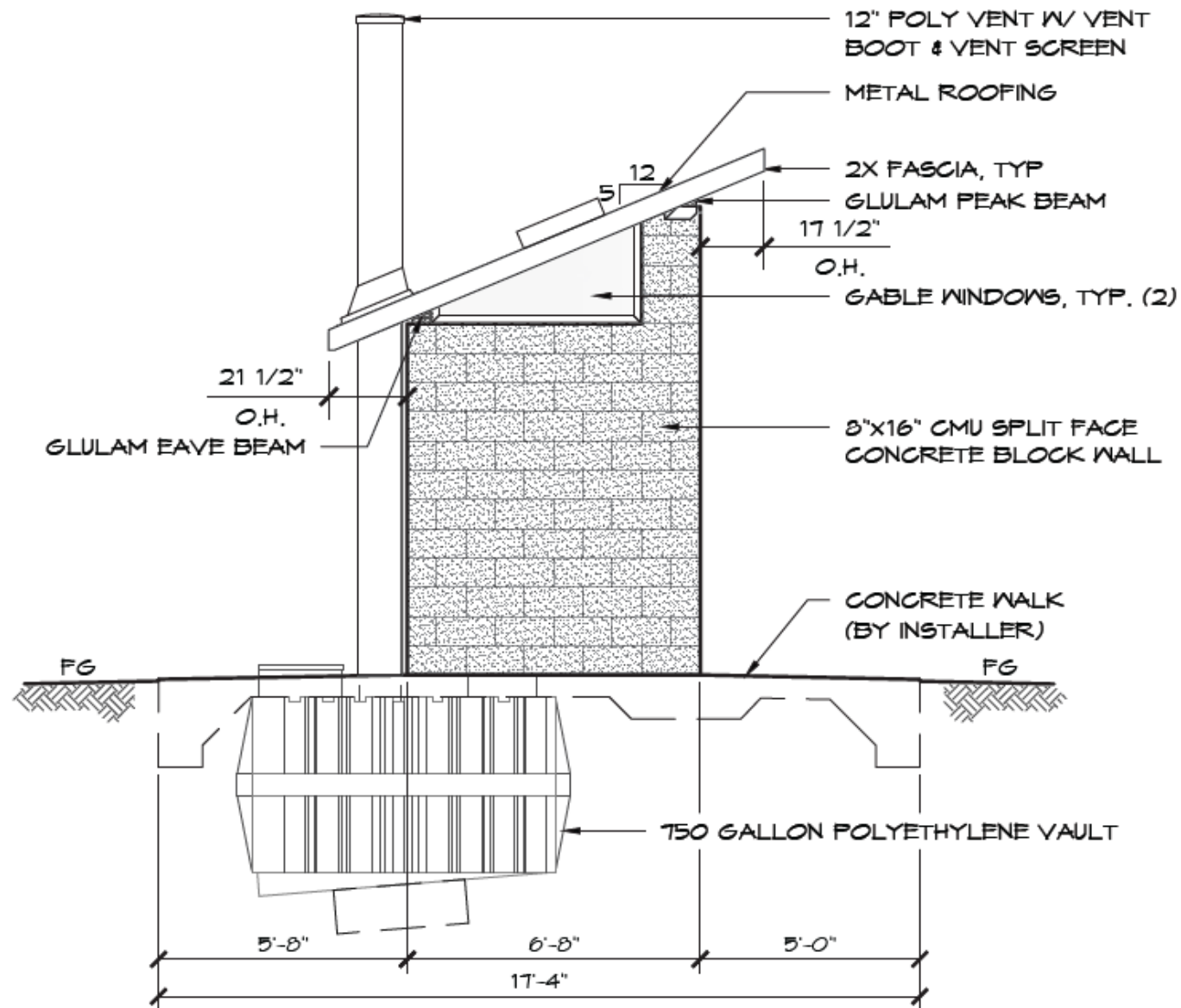
- New 3 Stall Restroom



ELEVATION VIEW

SCALE: 1/4" = 1'-0"





D

ELEVATION VIEW

SCALE: 1/4" = 1'-0"



ADA Access

- New ADA access to disc golf course practice area



Trail Connection

- New Crosswalk w/ Ped Beacon
- Improve connection to centennial trail



Misc. Improvements

- Parking lot lighting
- Trailhead Cameras
- Gated Access
- Landscape Restoration
- Caretaker Shelter Removed



Schedule

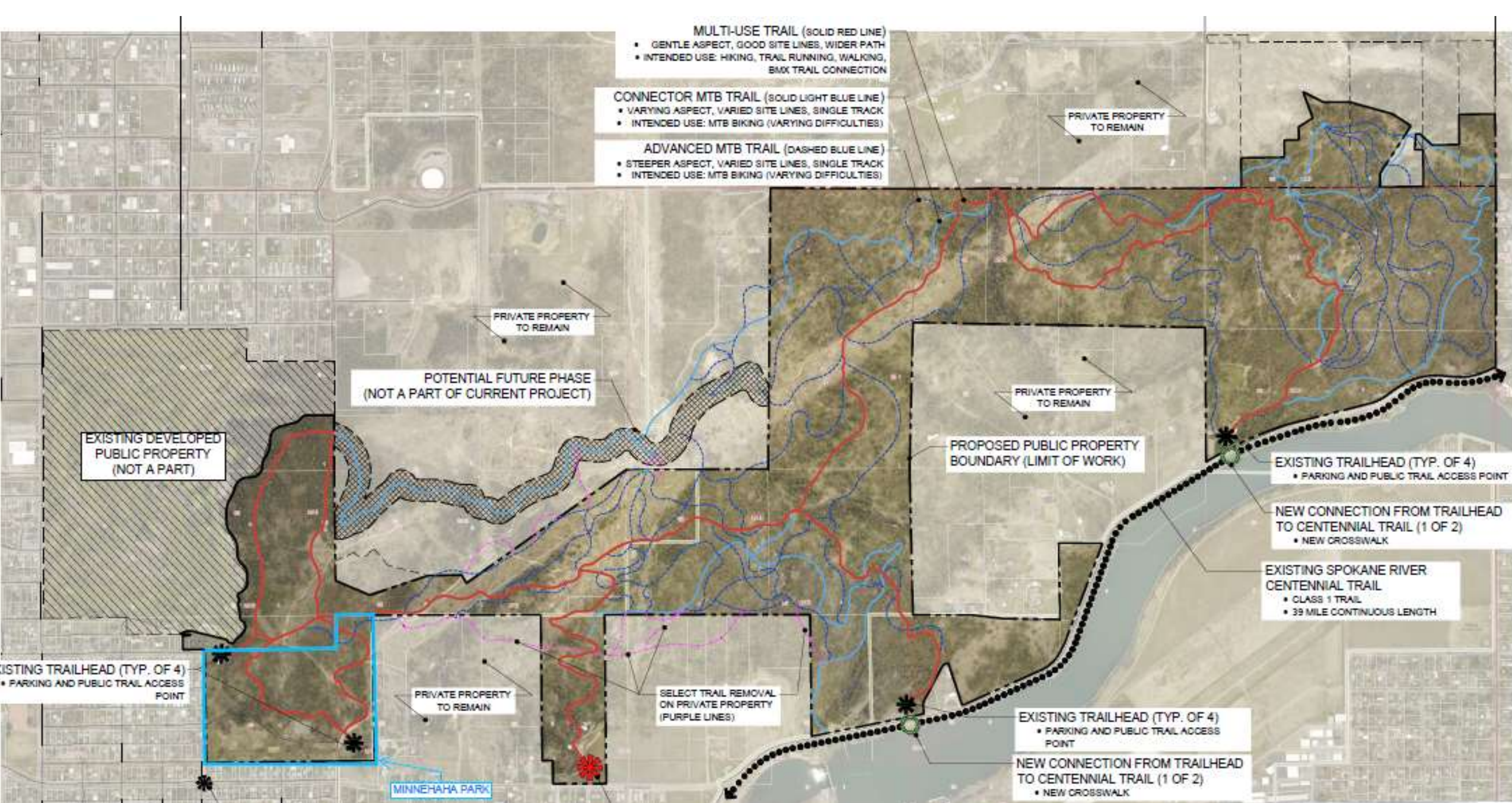
- Shields Park Construction: April – July
- Sekani Construction July – December
- One trailhead open at all times

Phase 3 – Briefly

Agenda

- Recap of Make Beacon Hill Phase 1 – *Previously Completed*
- Overview of Make Beacon Hill Public – Phase 2 (*ongoing*)
- Brief lookahead Make Beacon Hill Public – Phase 3 (*future*)

- Hand-off to Rob for Private Development update



Thank You

Agenda

- Recap of Make Beacon Hill Phase 1 – *Previously Completed*
- Overview of Make Beacon Hill Public – Phase 2 (*ongoing*)
- Brief lookahead Make Beacon Hill Public – Phase 3 (future)

- Hand-off to Rob for Private Development update

