

Make Beacon Hill Public Phase 2

Community Information Meeting

February 15, 2024

5:30 – 6:30pm Presentation and Q&A

6:30 – 7:30pm Open House Format (In-person only)



+



Meeting Agenda & Housekeeping

Agenda

- Project Background & Goals
- Public Input To Date
- Site Plans
- Environmental Permitting
- Project Schedule
- Q&A

Housekeeping

- Audio Recorded Meeting
- Save Questions for Q&A
- Online Attendees
 - Mute & Video Off
 - Submit questions in Chat
 - Chat questions are sent privately to host
 - Please include your contact info for question follow up

Project Team



Mike Light,
Project Manager

City Parks & Recreation



Nick Hamad,
Parks Planning Manager

City Parks & Recreation



Craig Andersen,
Director of Landscape
Architecture

AHBL



Vince Barthels,
Environmental Services
Manager

Ardurra



Project Partners

- Bower Climbing Coalition
- Evergreen East Mountain Bike Alliance
- Friends of Centennial Trail
- Inland NW Adaptive
- Jess Roskelley Foundation
- Spokane Mountaineers



Contact for Project Questions

Mike Light, Project Manager
City of Spokane Parks &
Recreation

Email:
MLight@SpokaneCity.org



Context Map



Beacon Hill Conservation Area

Esmeralda
Golf
Course

John H. Shields Park

Camp Sekani Park

Minnehaha
Park

Felts Field
Airport

Mitigation Area

Upriver Dr

Project Background

- 2009 Beacon Hill Trail System Draft Concept Plan
- 2016 Beacon Hill Trail System Preservation Plan
- 2018 – 2021 Make Beacon Hill Public Phase 1
- 2022 Make Beacon Hill Public Phase 2 **(We are here)**



Project Goals

- Improve access to protected natural public recreational land
- Increase off-street parking
- Improve trailhead safety
- Access for all ages and abilities
- Minimize environmental impacts
- Preserve natural setting



John H. Shields Park – New Parking Lot Location at West End



+



John H. Shields Park – New Pedestrian Connectivity in Central Area



+



Camp Sekani Park – West View to Future Parking Lots



+



Public Feedback – John H. Shields Park

Q4 Rank the importance of proposed accessory amenities at John H. Shields Park (Top = highest, Bottom = lowest)

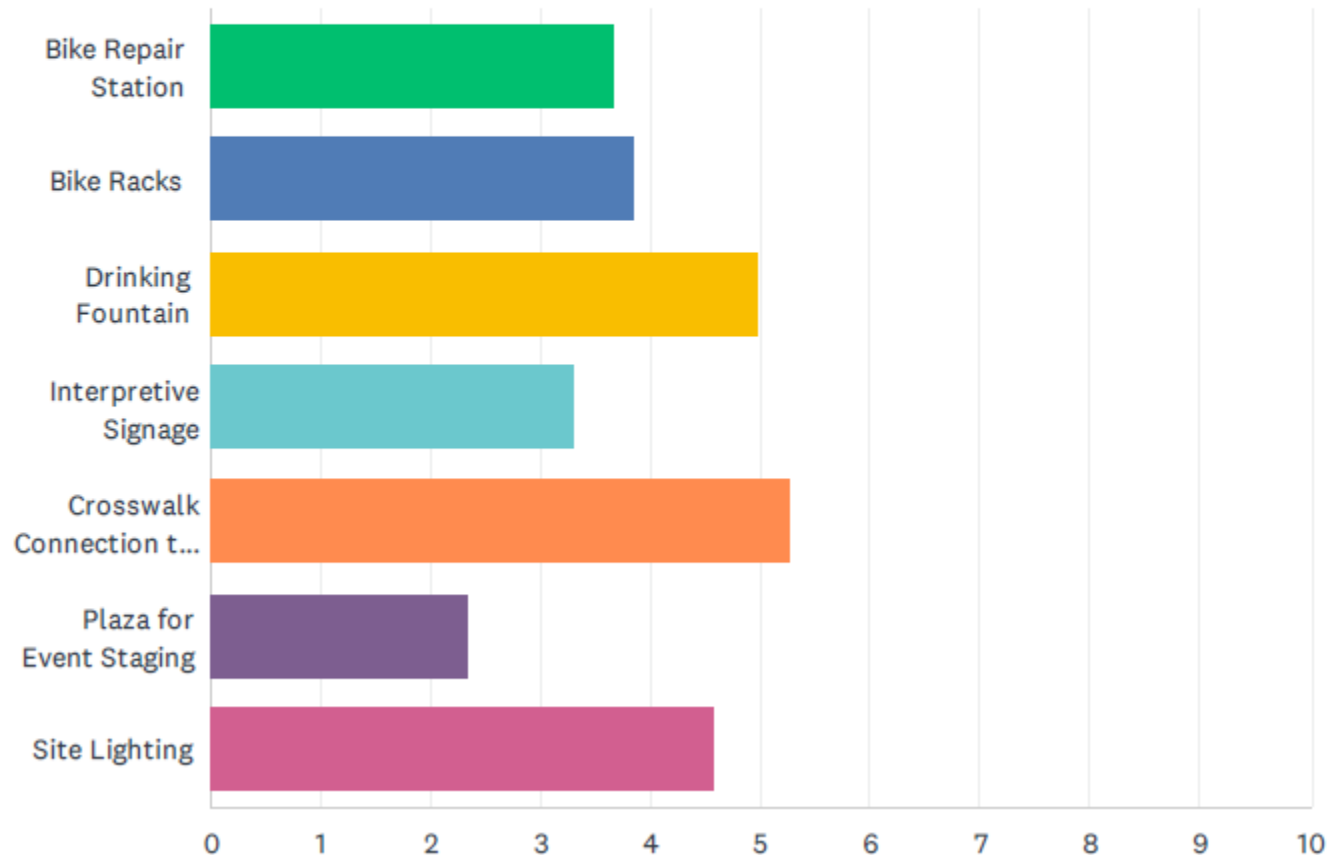
Answered: 268 Skipped: 1

Top 3 Poll Results:

Crosswalk

Site Lighting

Drinking Fountain



+



Public Feedback – Camp Sekani Park

Q5 Rank the importance of proposed accessory amenities at Camp Sekani Park (Top = highest, Bottom = lowest)

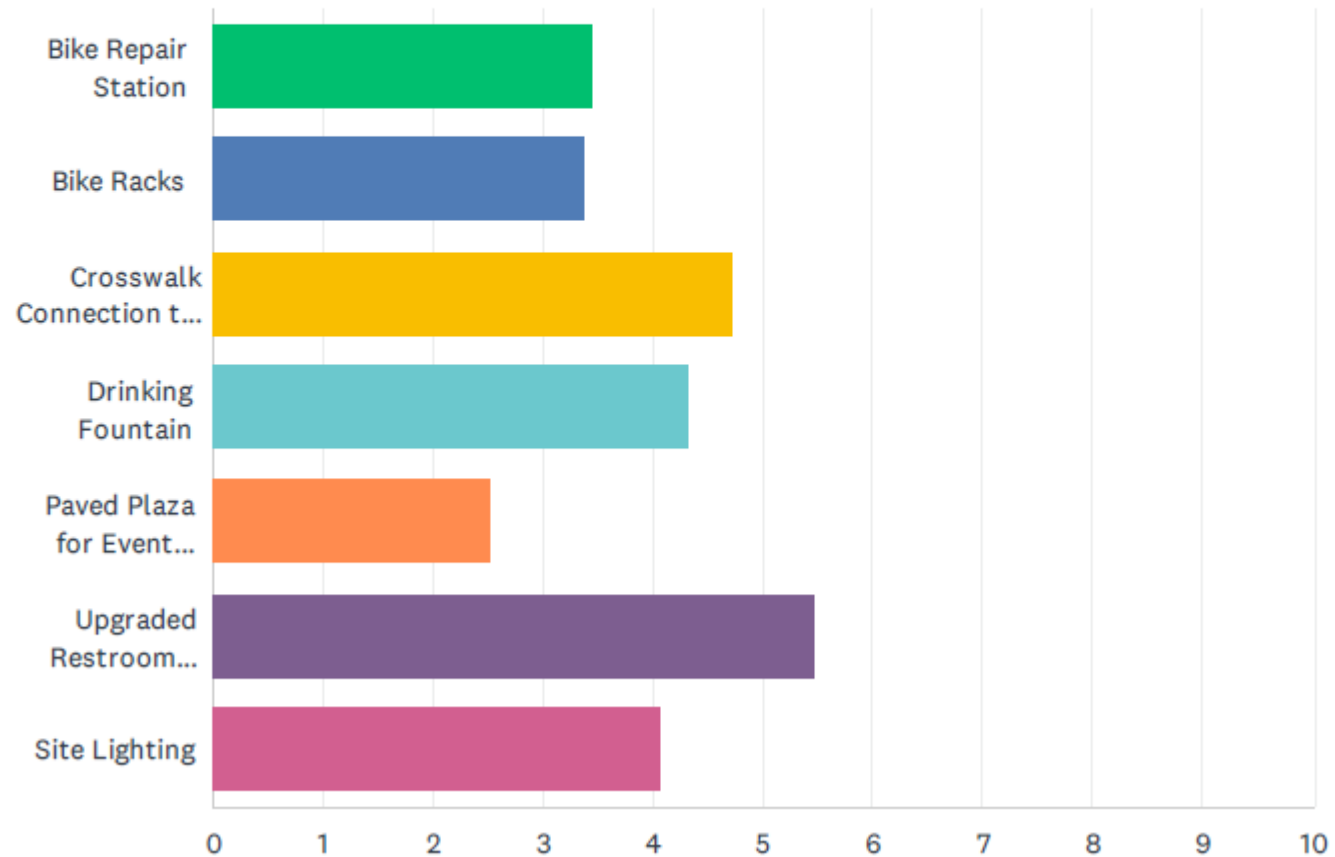
Answered: 256 Skipped: 13

Top 3 Poll Results:

Crosswalk

Site Lighting

Waterless Restroom

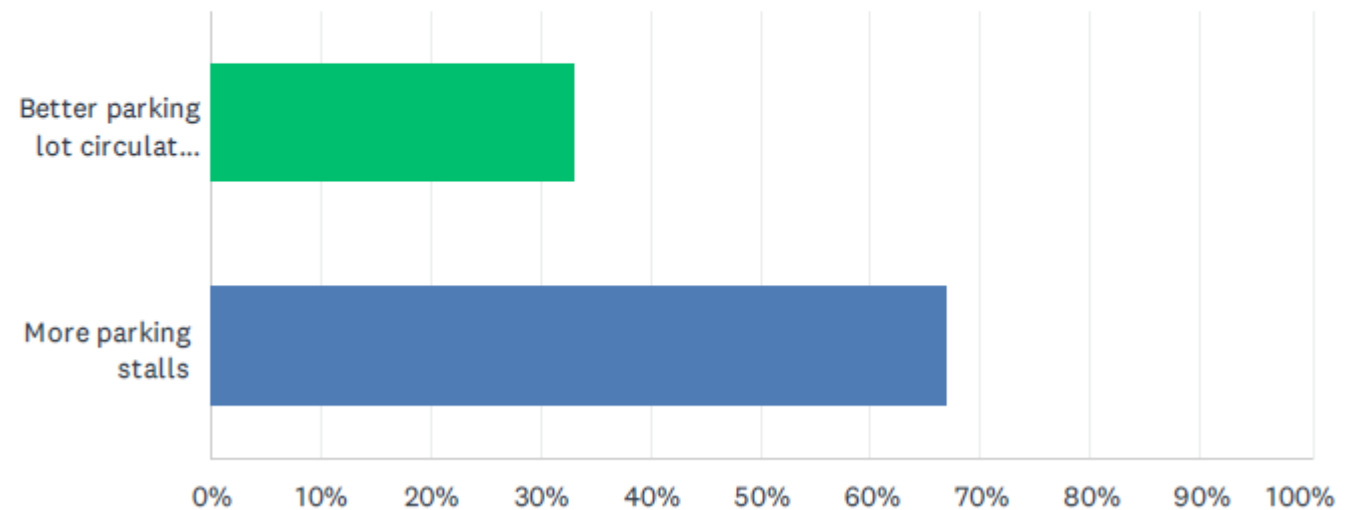


Public Feedback – Camp Sekani Park

Q6 What is more important for you at Camp Sekani Park?

Answered: 263 Skipped: 6

More parking was preferred over better parking lot circulation.



Public Feedback - General Summary

Most Excited About:

- More parking, restroom upgrade, and crosswalks to Centennial Trail.

Most Concerned About:

- Maintaining the natural setting, safety & vandalism, traffic.

Major Events to Coordinate With 2024 Construction:

- Hubapalooza (April 5-7)
- Spokatopia (June 14-15)
- Eastoberfest (TBD Early October)



John H. Shields Park Overall Site Plan

ADAPTIVE
TRAIL

Private Property

EAST END

CENTRAL AREA

WEST END

Upriver Dr

Private Property

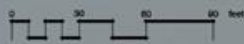
County Limits

County Limits

City Limits



NORTH



West End & Central Area

Paved parking lot (approx. 21 stalls, 1 ADA stall)

New park entry

Multi-use pathway

Site fencing

Maintenance / Emergency access road

Future bus stop

Pedestrian crossing

Rest node with interpretive signage and bike racks

Existing restroom building to remain

Security lighting

County Limits

City Limits

Private Property

County Limits

Shoreline Jurisdiction

County Shoreline Buffer

Upriver Dr



East End & Adaptive Trail

Open Book Climbing Route

Possible parking expansion (approx. 6 stalls)
Total parking approx. 35 stalls, 2 ADA stalls

Enhanced park entry & new stairs

Multi-use pathway

Children's bouldering playground

Adaptive trail

Security lighting

County Limits

City Limits

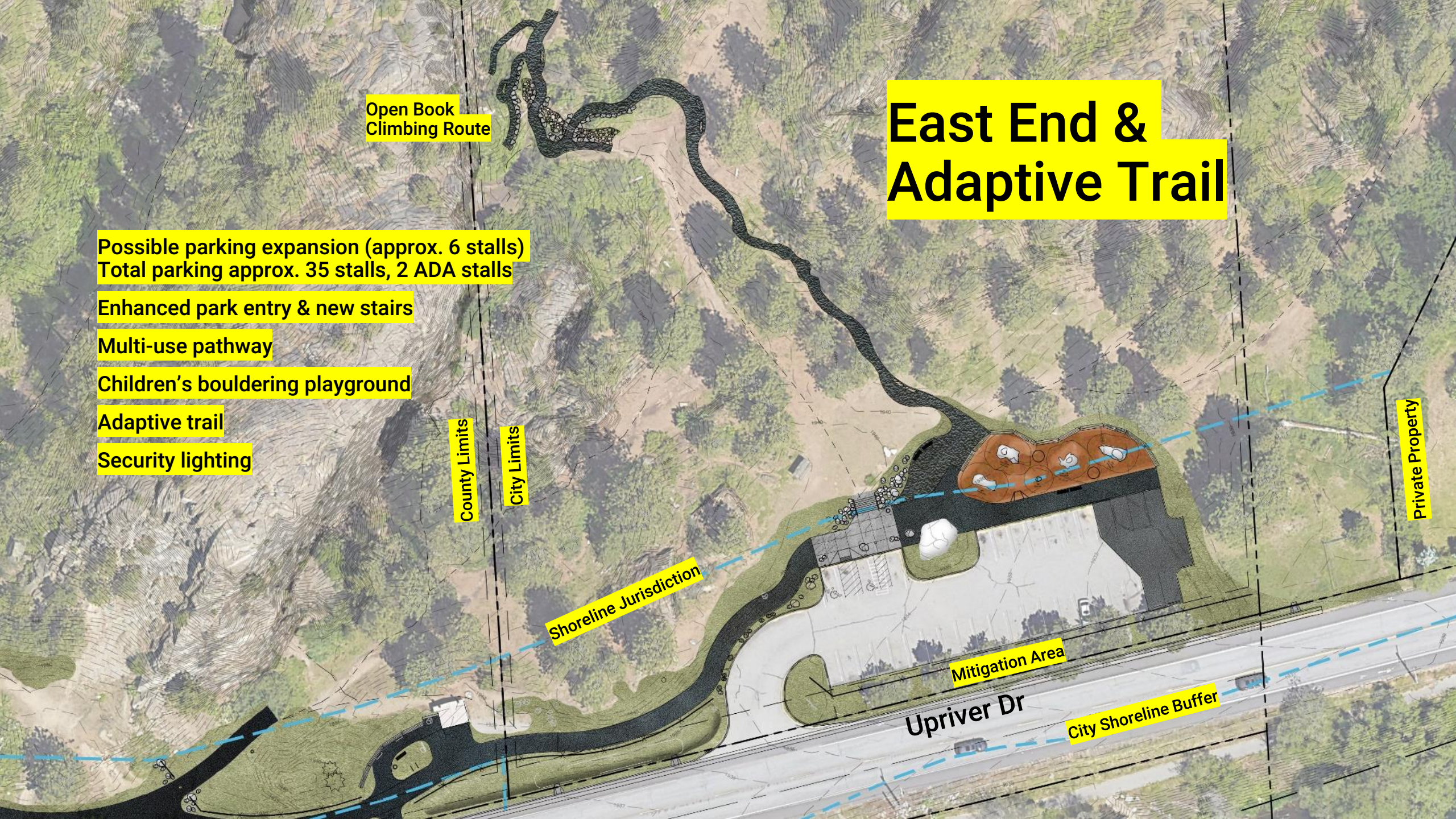
Shoreline Jurisdiction

Mitigation Area

Upriver Dr

City Shoreline Buffer

Private Property



Camp Sekani Park Overall Site Plan



Disc golf practice zone

Access road

Shoreline Jurisdiction

County Shoreline Buffer

Private Property

County Limits

Mitigation Area

Upriver Dr

- Paved parking lots (approx. 85 stalls)
- ADA accessible parking (4 stalls)
- New driveway location
- Enhanced park entry & site furniture
- Relocated entry sign & kiosk
- Pedestrian walkways
- Protected disc golf course
- Pedestrian crossing & pathway to lower parking lot
- Restroom upgrades (final design TBD)

Camp Sekani - Upper Area

Private Property

County Limits



New stairs and relocated entry sign

Possible expanded parking area (approx. 15 additional stalls)

Restroom Upgrades TBD

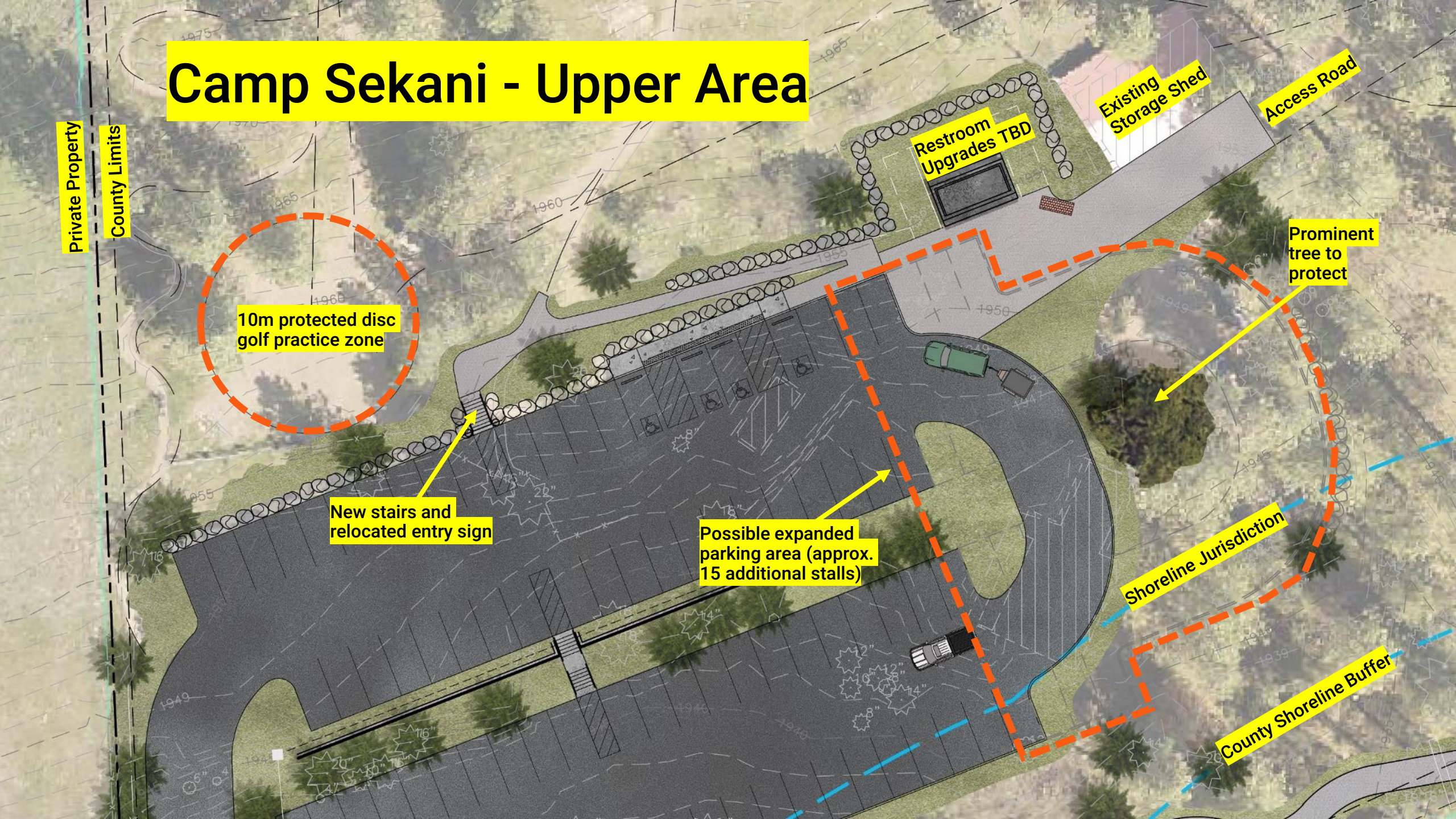
Existing Storage Shed

Access Road

Prominent tree to protect

Shoreline Jurisdiction

County Shoreline Buffer



Live Poll click here →



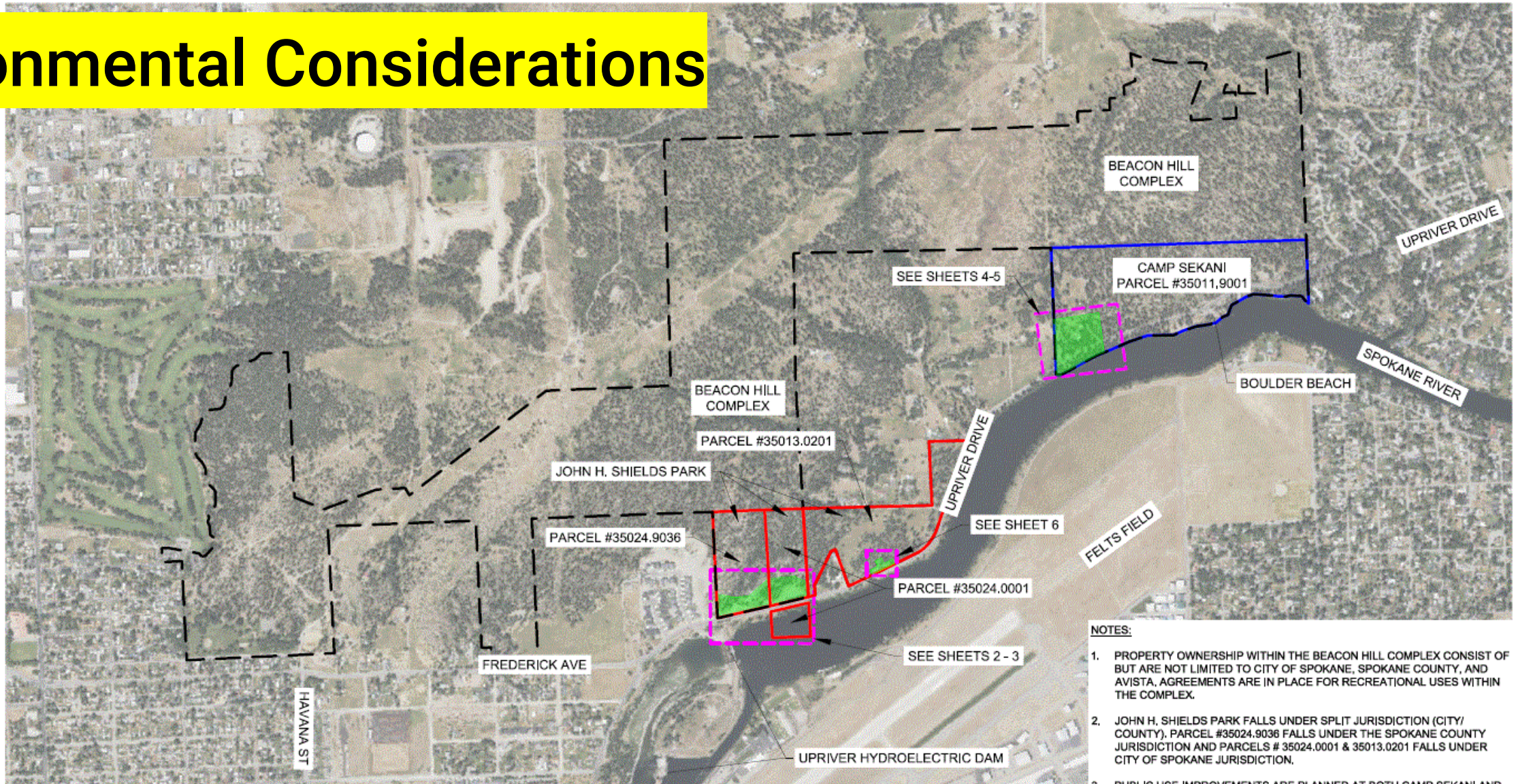
Join at menti.com
Code 2456 0803

In your opinion, what is more important at Camp Sekani Park?

- A. Expanding the new parking to gain approx. 15 stalls
- B. Upgrading to a waterless restroom building



Environmental Considerations



- LEGEND**
- JOHN H. SHIELDS PARCEL AND PARK BOUNDARIES
 - CAMP SEKANI PARCEL AND PARK BOUNDARY
 - BEACON HILL COMPLEX BOUNDARY
 - PROPOSED PROJECT AREAS / FOOTPRINTS

MAKE BEACON HILL PUBLIC PHASE 2 TRAILHEADS PROJECT OVERVIEW AND SHEET INDEX EXHIBIT SHEET 1

- NOTES:**
1. PROPERTY OWNERSHIP WITHIN THE BEACON HILL COMPLEX CONSIST OF BUT ARE NOT LIMITED TO CITY OF SPOKANE, SPOKANE COUNTY, AND AVISTA. AGREEMENTS ARE IN PLACE FOR RECREATIONAL USES WITHIN THE COMPLEX.
 2. JOHN H. SHIELDS PARK FALLS UNDER SPLIT JURISDICTION (CITY/ COUNTY). PARCEL #35024.9036 FALLS UNDER THE SPOKANE COUNTY JURISDICTION AND PARCELS # 35024.0001 & 35013.0201 FALLS UNDER CITY OF SPOKANE JURISDICTION.
 3. PUBLIC USE IMPROVEMENTS ARE PLANNED AT BOTH CAMP SEKANI AND JOHN H. SHIELDS PARKS TO IMPROVE PUBLIC ACCESS AND PARKING FOR THE BEACON HILL COMPLEX
 4. SEE SHEET 6 FOR PRESCRIBED MITIGATION AREAS.



ARDURRA

1717 S. RUSTLE STREET, SUITE 201
SPOKANE, WA 99224

509-319-2580 | WWW.ARDURRA.COM

DATE: 11/27/23 JOB: 230144



JOHN H. SHIELDS PARK

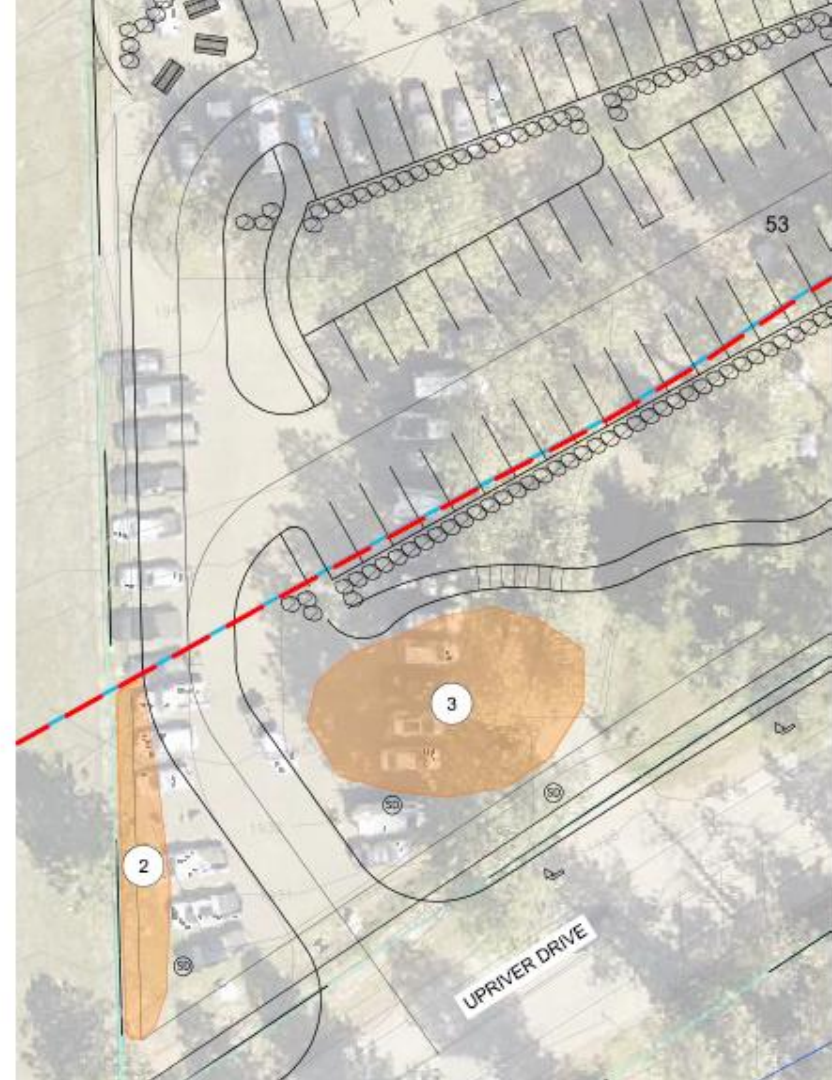
1

UPRIVER DRIVE

OHWM

OHWM

MITIGATION AREA 1 (.37 ACRES)
WITHIN PARCEL #35013.0201



53

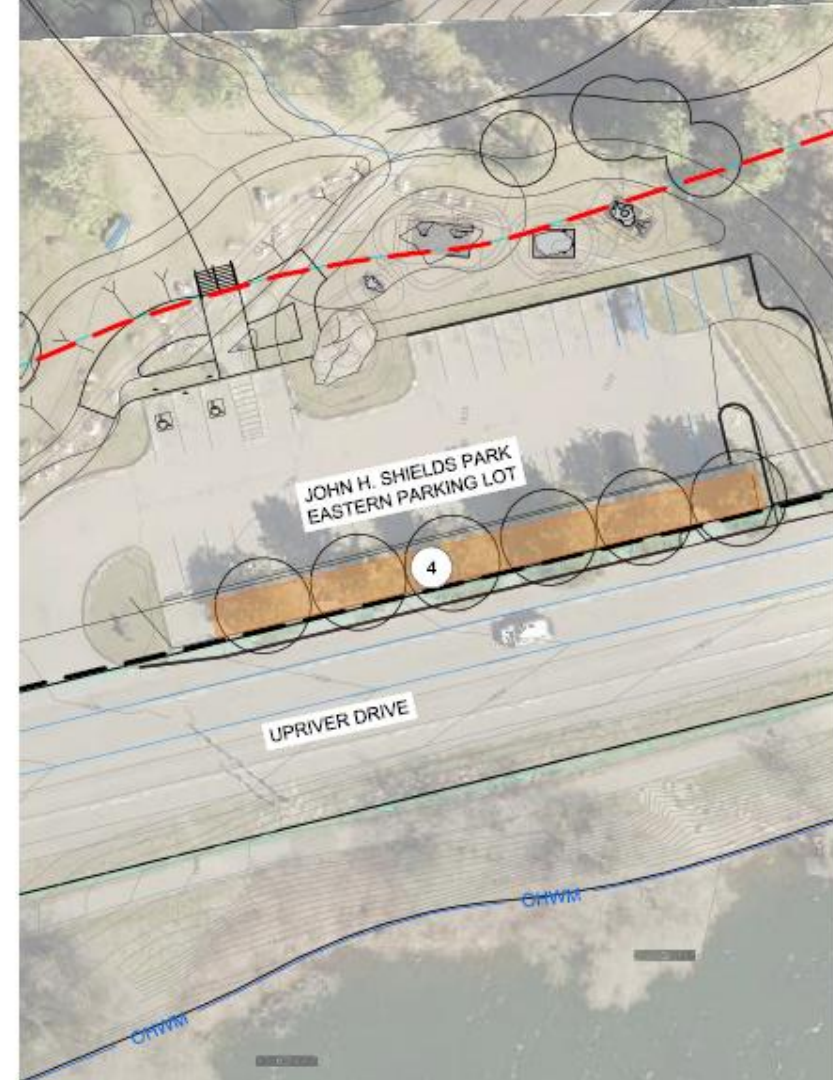
2

3

UPRIVER DRIVE

OHWM

MITIGATION AREA 2 (.03 ACRES) & MITIGATION AREA 3 (.08 ACRES)
WITHIN PARCEL #35024.0001



JOHN H. SHIELDS PARK
EASTERN PARKING LOT

4

UPRIVER DRIVE

OHWM

MITIGATION AREA 4 (.04 ACRES)
WITHIN PARCEL #35011.9001

Environmental Mitigation Areas

Project Schedule

Winter 2024 (We are here)

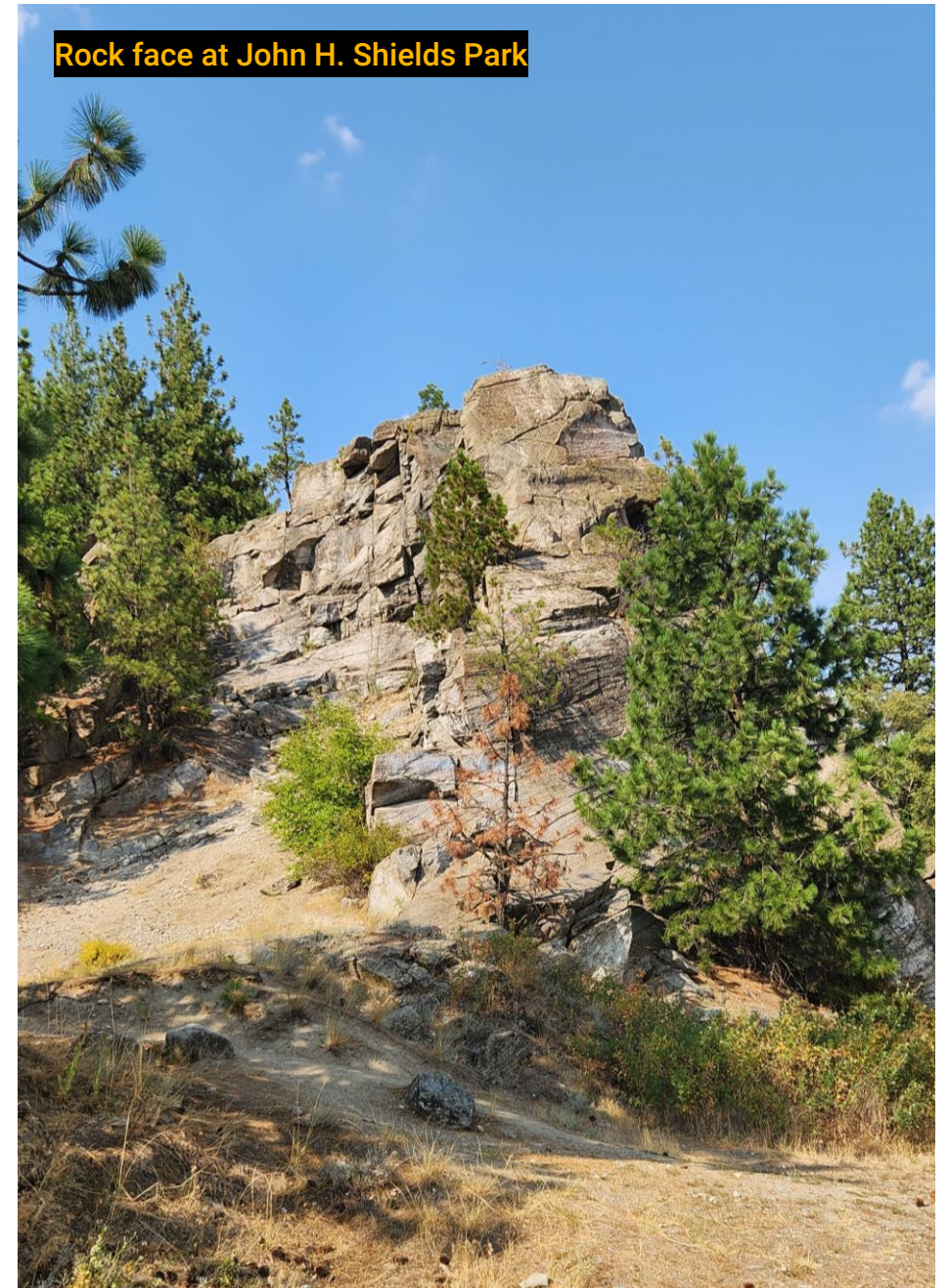
- Permitting
- Design Phase Completion

Spring 2024

- Permit Approvals
- Bidding & Contractor Award

Summer 2024 – Summer 2025

- Construction Period



Construction Impacts

- Trailhead facilities closed during construction.
- No access to Beacon Hill through construction zones.
- Upriver Drive parking restrictions remain.
- Stay tuned via City Parks webpage and email updates.



Q & A Session

Online Attendees

- Submit questions through Chat



+



Thank You

Stay Tuned For Project Updates:

<https://my.spokanecity.org/parksrec/about/planning/>

Mike Light, City of Spokane Parks & Recreation

Email: MLight@SpokaneCity.org



+

