

117°28'30"W

117°28'15"W

117°28'0"W

117°27'45"W

47°38'0"N

47°38'0"N

47°37'45"N

47°37'45"N

47°37'30"N

47°37'30"N

47°37'15"N

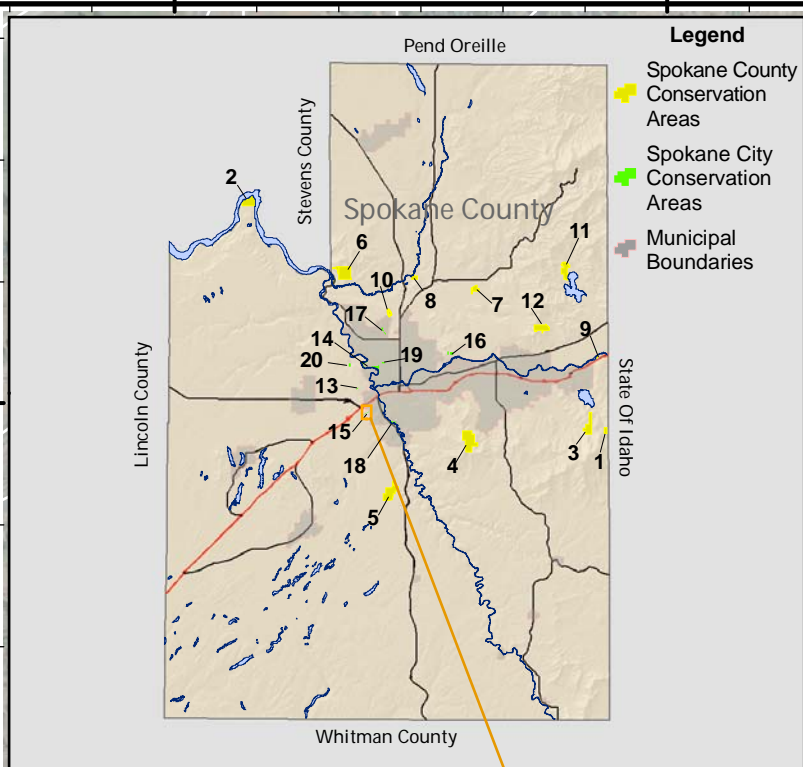
47°37'15"N

117°28'30"W

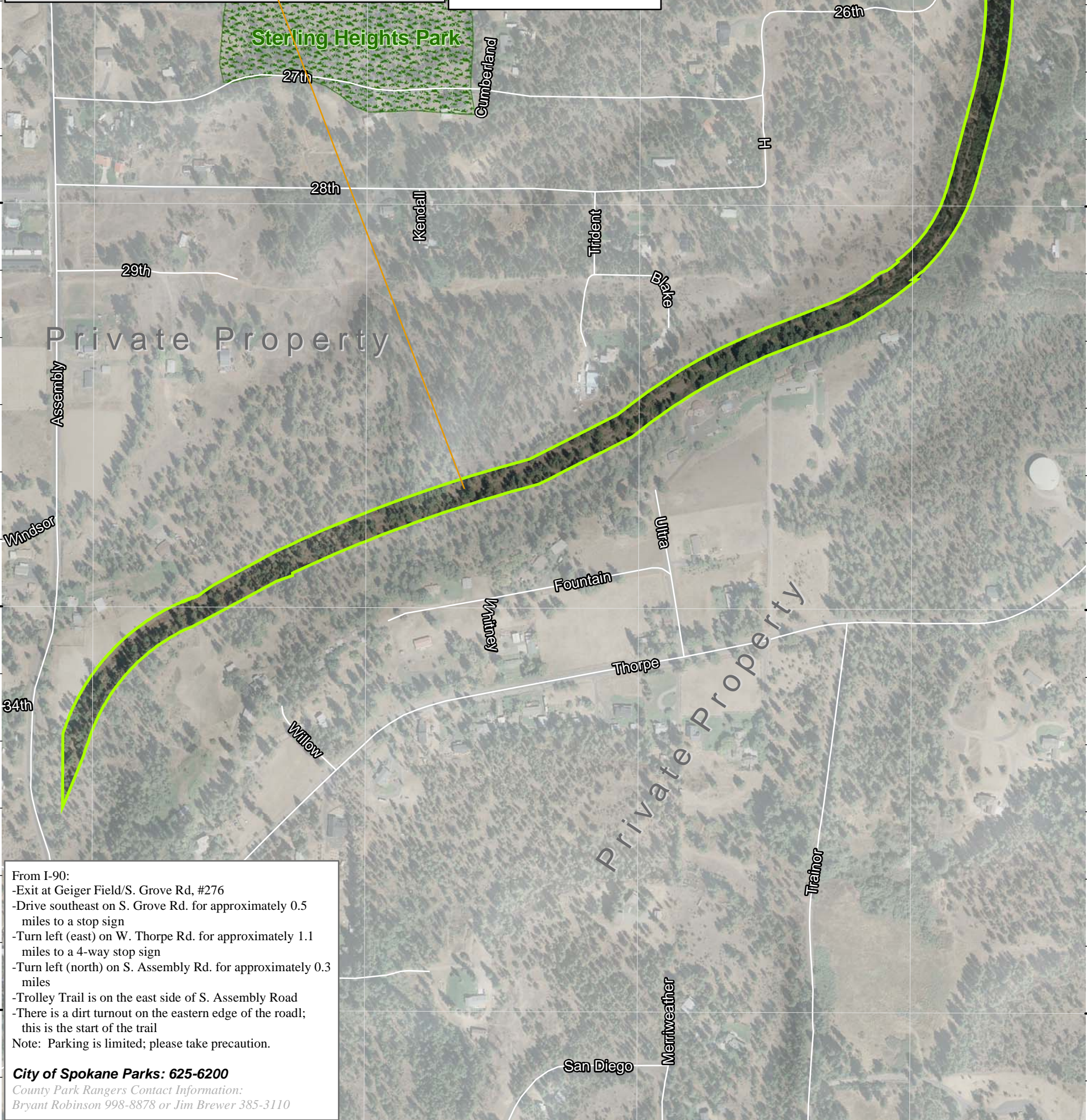
117°28'15"W

117°28'0"W

117°27'45"W



- Conservation Futures Natural Areas**
- Spokane County*
1. - Cedar Grove
 2. - McLellan
 3. - Liberty Lake
 4. - Iller Creek
 5. - James T. Slavin
 6. - Van Horn, Edburg/Bass
 7. - Feryn Ranch
 8. - Haynes Estate
 9. - Gateway/Stateline
 10. - Holmberg
 11. - McKenzie
- City of Spokane*
12. - Antoine Peak
 13. - Rimrock
 14. - Downriver
 15. - Trolley Trail
 16. - Camp Sekani
 17. - Austin Ravine
 18. - Latah Creek
 19. - Drumheller Springs
 20. - Romine

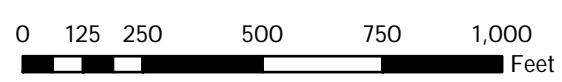


From I-90:
 -Exit at Geiger Field/S. Grove Rd. #276
 -Drive southeast on S. Grove Rd. for approximately 0.5 miles to a stop sign
 -Turn left (east) on W. Thorpe Rd. for approximately 1.1 miles to a 4-way stop sign
 -Turn left (north) on S. Assembly Rd. for approximately 0.3 miles
 -Trolley Trail is on the east side of S. Assembly Road
 -There is a dirt turnout on the eastern edge of the road; this is the start of the trail
 Note: Parking is limited; please take precaution.

City of Spokane Parks: 625-6200
 County Park Rangers Contact Information:
 Bryant Robinson 998-8878 or Jim Brewer 385-3110



Trolley Trail Conservation Area
 Owned and Managed by City of Spokane



- Know Your Conservation Area Boundaries**
- Boundary Adjoins Private Party
 - Boundary Adjoins Publicly Accessible Land
 - Other Parks

2007 Ortho Imagery:
 Copyright: Avista Utilities.
 Spokane County Geographic Information Systems
 Map Produced: February, 2009

Note: This is a GIS map showing base layers rendered for "best fit" with digital orthophotography. This is not a survey and users are reminded that legal documents and site inspections are necessary to establish exact boundaries on the ground. While every attempt is made to assure the accuracy of this information, no warranty accompanies this map.