

117°29'15"W

117°29'0"W

47°39'30"N

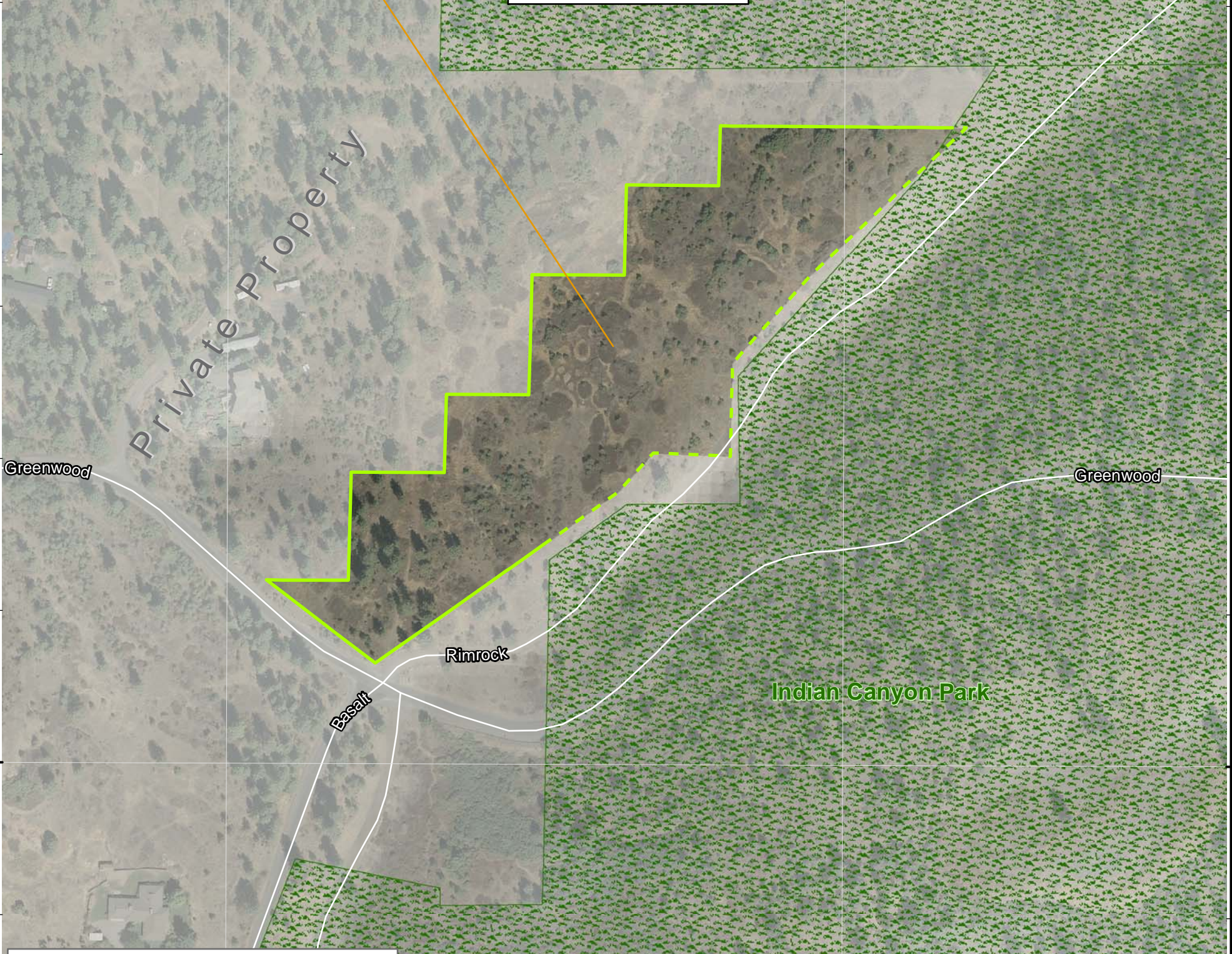
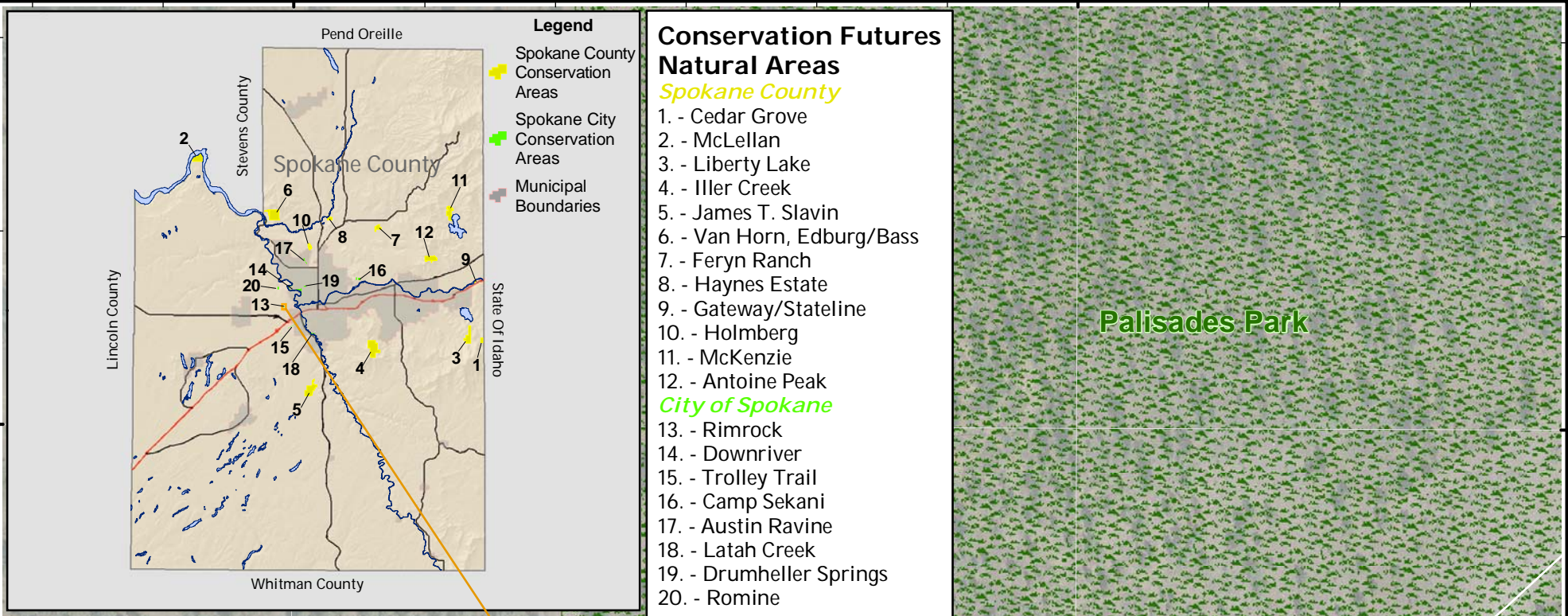
47°39'30"N

47°39'15"N

47°39'15"N

117°29'15"W

117°29'0"W



From I-90:

- Exit at Maple Street, #279
- Drive north to Second Avenue, then turn left
- Drive west on Second Avenue/Sunset Blvd. for approximately 1 mile
- Turn right (north) on Government Way for 1 mile
- Turn left (west) on Greenwood Rd. for 1 mile
- Rimrock Conservation Area is located at the intersection of Greenwood Rd with Rimrock Rd, in the northwest corner

Note: There is limited parking available; a narrow dirt road angles northwest from the intersection.

City of Spokane Parks: 625-6200
 County Park Rangers Contact Information:
 Bryant Robinson 998-8878 or Jim Brewer 385-3110



Rimrock Conservation Area

Owned and Managed by City of Spokane

2007 Ortho Imagery:
 Copyright: Avista Utilities.

Spokane County Geographic Information Systems
 Map Produced: February, 2009



Note: This is a GIS map showing base layers rendered for "best fit" with digital orthophotography. This is not a survey and users are reminded that legal documents and site inspections are necessary to establish exact boundaries on the ground. While every attempt is made to assure the accuracy of this information, no warranty accompanies this map.