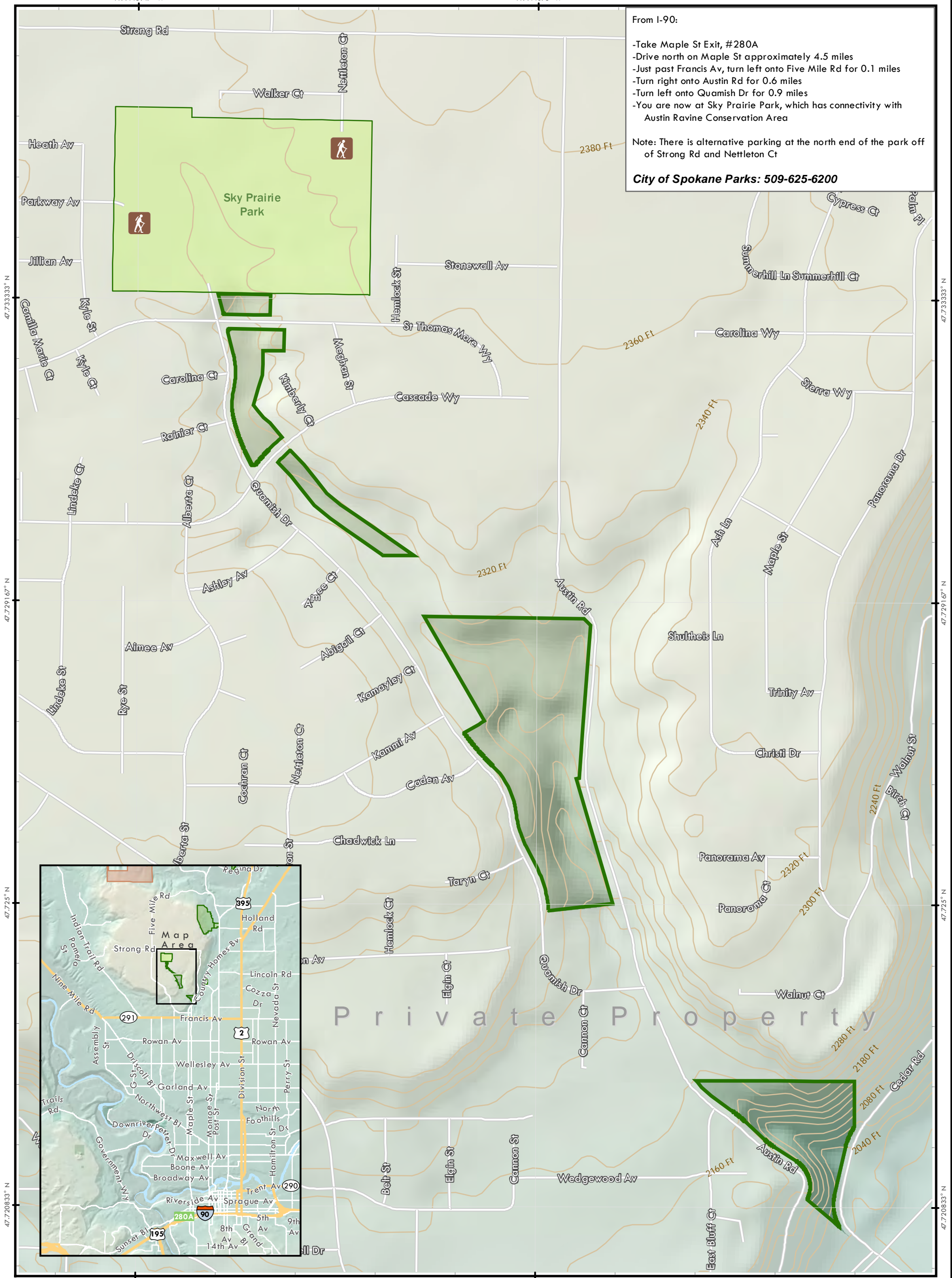


From I-90:

- Take Maple St Exit, #280A
- Drive north on Maple St approximately 4.5 miles
- Just past Francis Av, turn left onto Five Mile Rd for 0.1 miles
- Turn right onto Austin Rd for 0.6 miles
- Turn left onto Quamish Dr for 0.9 miles
- You are now at Sky Prairie Park, which has connectivity with Austin Ravine Conservation Area

Note: There is alternative parking at the north end of the park off of Strong Rd and Nettleton Ct

City of Spokane Parks: 509-625-6200



- City of Spokane [\(Website\)](#)
- Austin Ravine Conservation Area
  - Other City of Spokane Parks
- Other
- Spokane County Parks [\(Website\)](#)
  - Washington State Parks [\(Website\)](#)

# Austin Ravine Conservation Area

Owned and Managed by City of Spokane

Spokane County Geographic Information Systems  
Map Produced: June 2014



Contour Interval: 20 Ft

Note: This is a GIS map showing base layers rendered for "best fit" with digital orthophotography. While every attempt is made to ensure the accuracy of this information, no warranty accompanies this map. If you have any additional questions, please contact the Spokane County Parks department at: 509-477-4730.