

# CITY-OWNED PROPERTY INVENTORY

## District 1



Friendship Park  
1.0 acres



Harmon Park  
1.0 acres



Hayes Park  
1.5 acres



Hill N'Dale Park  
1.8 acres

District 1



Kehoe Park  
1.0 acres



Minnehaha Park  
3.0 acres



Mission Park  
1.0 acres



North Hill Reservoir  
8.2 acres

District 1



Upriver Park  
13.0 acres

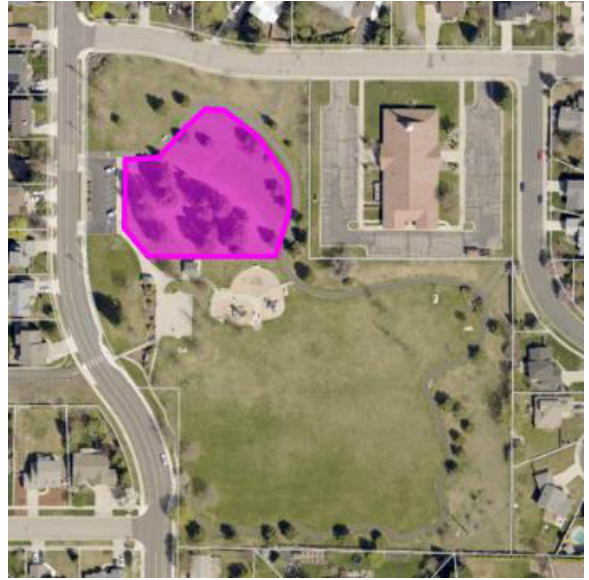


Wildhorse Park  
1.2 acres

District 2



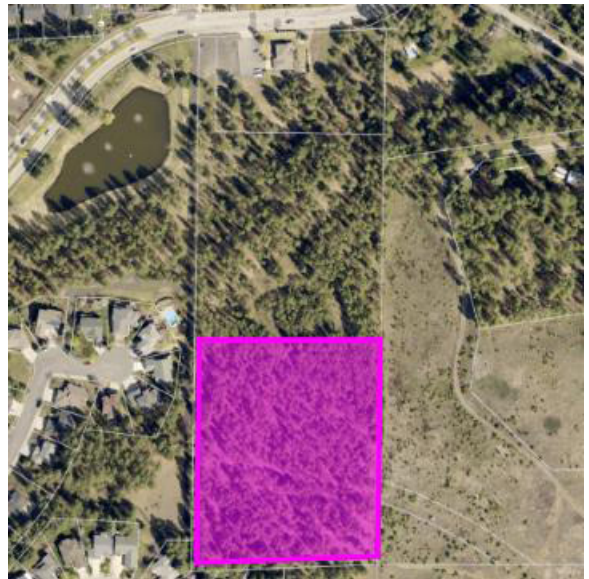
37th Ave Stormwater Facility  
2.8 acres



Ben Burr Park  
1.0 acres



Comstock Park  
2.3 acres

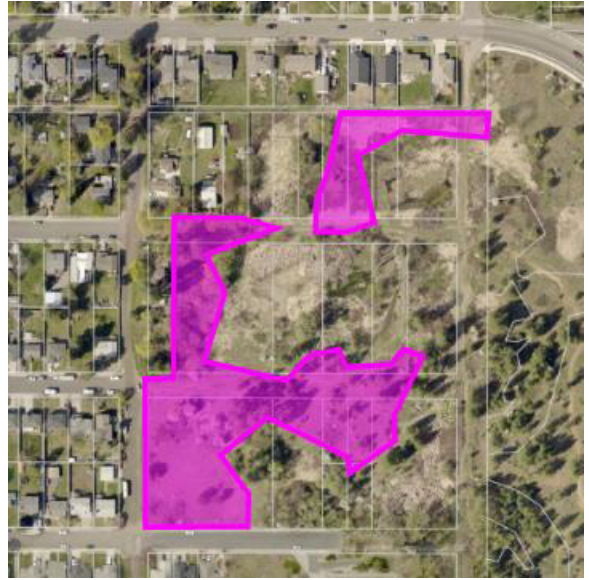


Fire Station 5  
5.0 acres

District 2



Fish Lake Trail Property  
1.7 acres



Frog Ponds  
3.9 acres

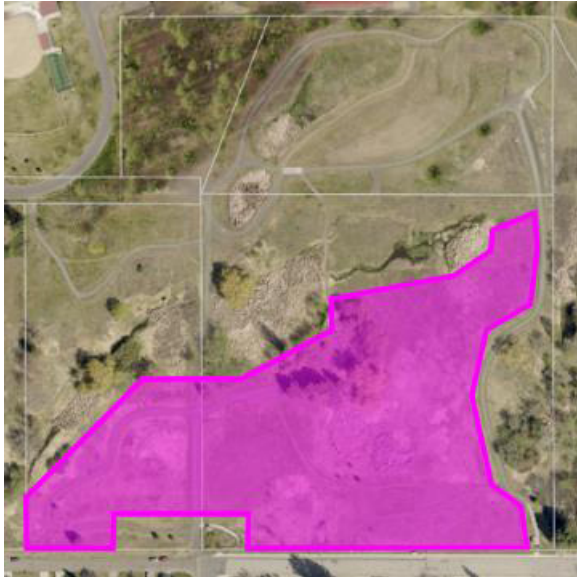


Garden Park Water Tank  
1.8 acres



Grant Park  
1.4 acres

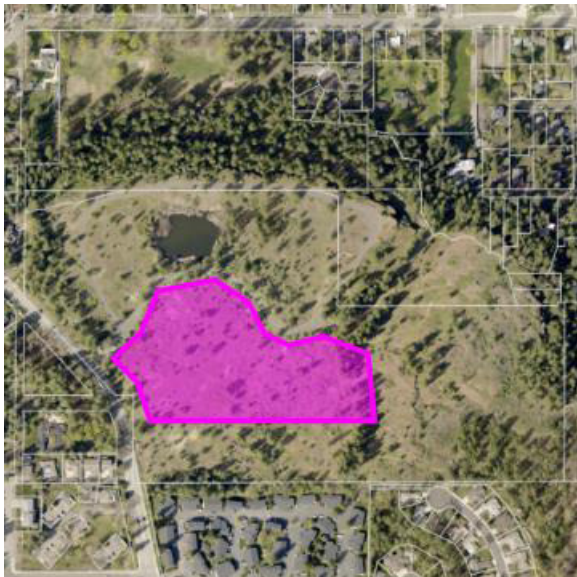
District 2



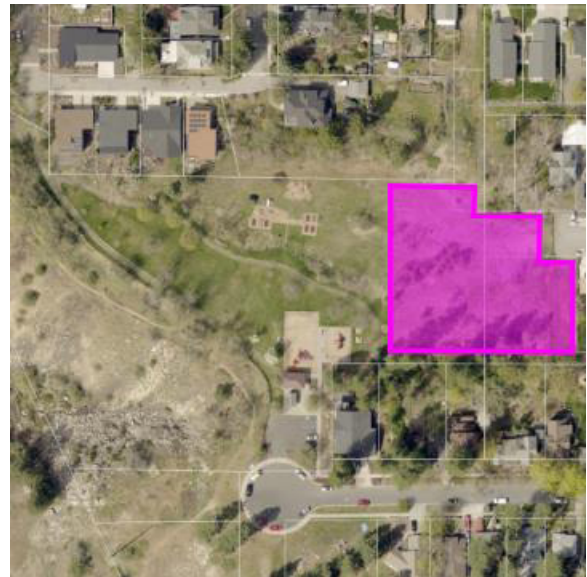
Hazel's Creek  
7.1 acres



Liberty Park  
0.5 acres



Lincoln Park  
7.5 acres



Polly Judd Park  
1.0 acres

District 2



Thornton Murphy Park  
1.2 acres

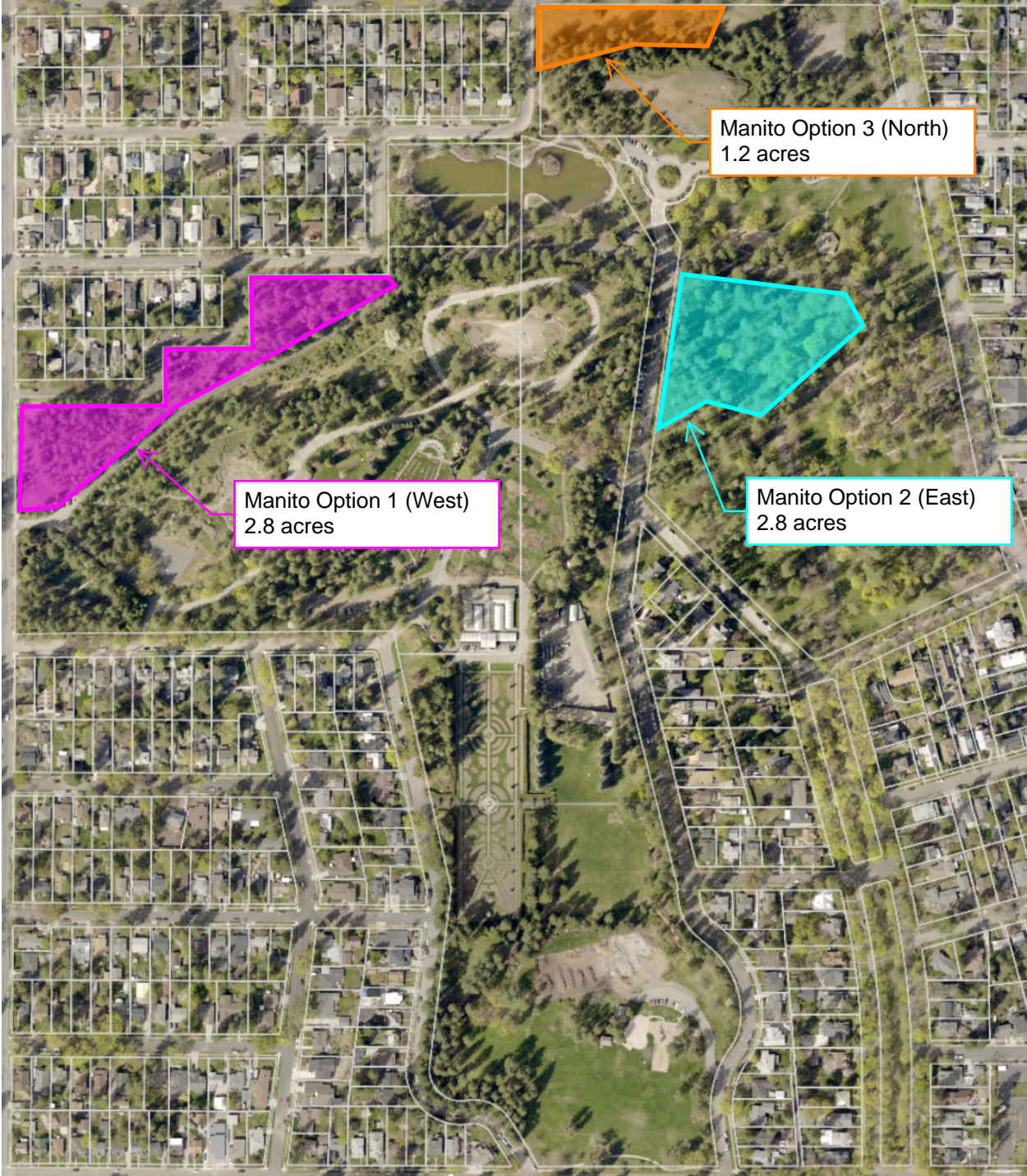


Thorpe Road Reservoir  
1.6 acres



Underhill Park  
7.2 acres

District 2





District 3



A.M. Cannon Park  
1.0 acres



Audubon Park  
1.0 acres



Corbin Park  
2.4 acres



Downriver Stormwater Facility  
2.8 acres

District 3



Dwight Merkel Sports Complex  
1.6 acres



Five Mile & Strong Rd Property  
4.0 acres



Five Mile Reservoir  
9.3 acres



Franklin Park  
1.5 acres

District 3



Meadowglen Park  
1.1 acres



Pacific Park  
1.6 acres



Sky Prairie Park  
4.6 acres



Westgate Park  
1.3 acres

District 3

