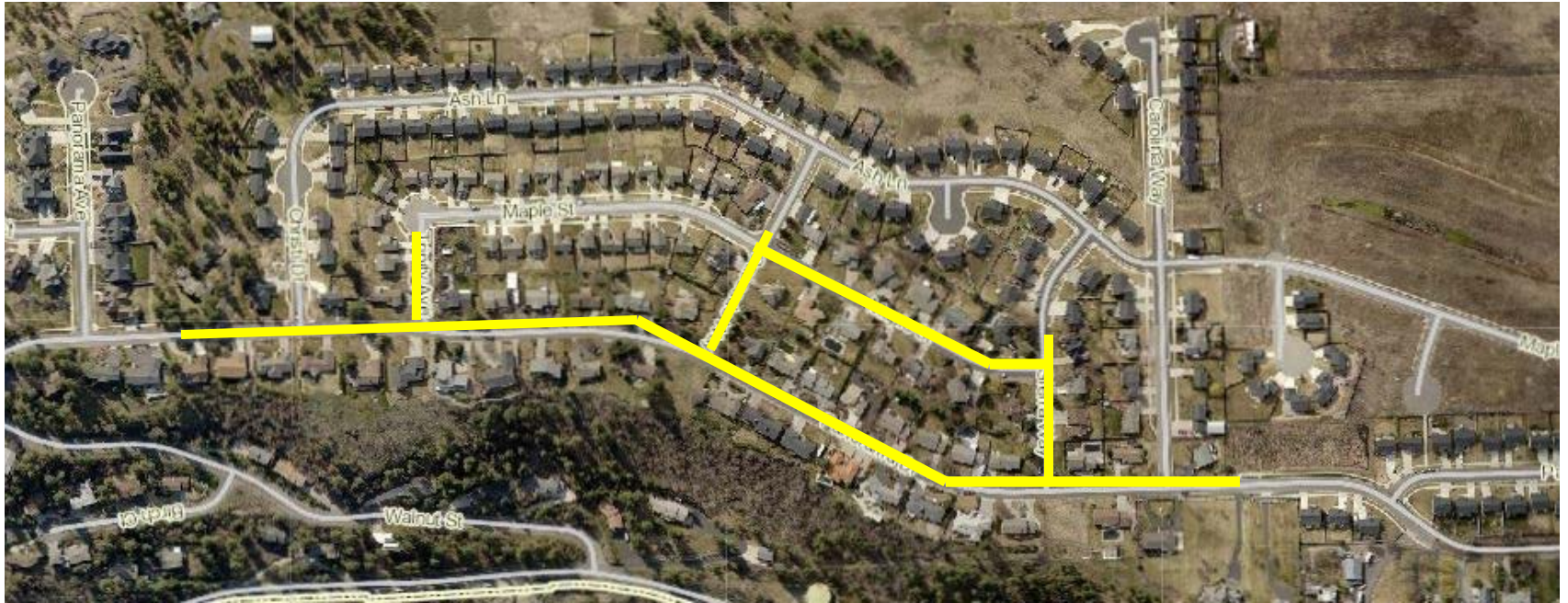


Panorama Drive Pipe Replacement




The City of Choice

Project Location Map




Panorama Drive – Christi Drive to Palm Place
Maple Street – Cascade Way to Sierra Way


Project Overview

- ▶ Scheduled for 2015 construction
 - ▶ Water distribution pipe replacement
 - ▶ Resurface all streets
- 

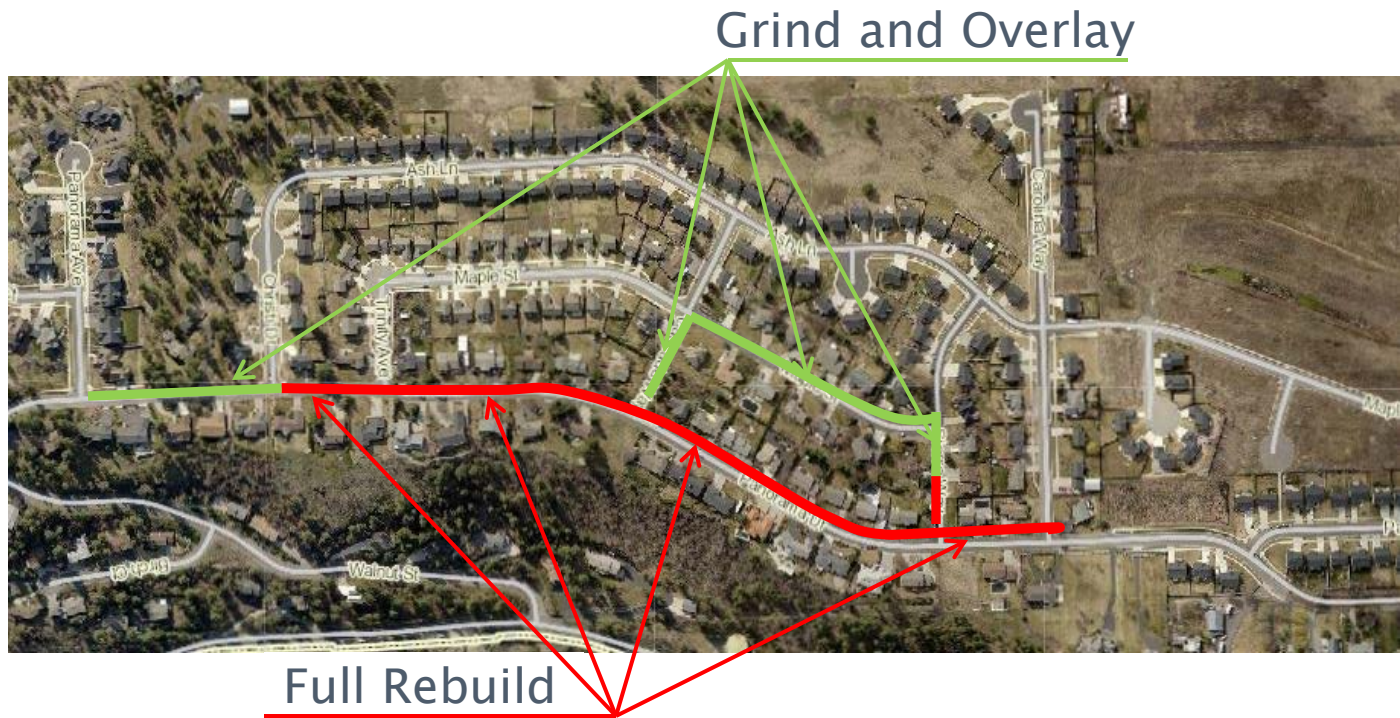
Project Impacts

- ▶ Begin June 2015
 - ▶ Trenching to replace waterline
 - Half the street
 - Access to driveways will be provided
 - Mail and garbage will be coordinated
 - Street parking will not be available
- 

Construction Phasing

- ▶ Plan around school schedule
 - ▶ Panorama and Maple – not at the same time
 - ▶ Maple will be completed first
- 

Pavement Rating Map

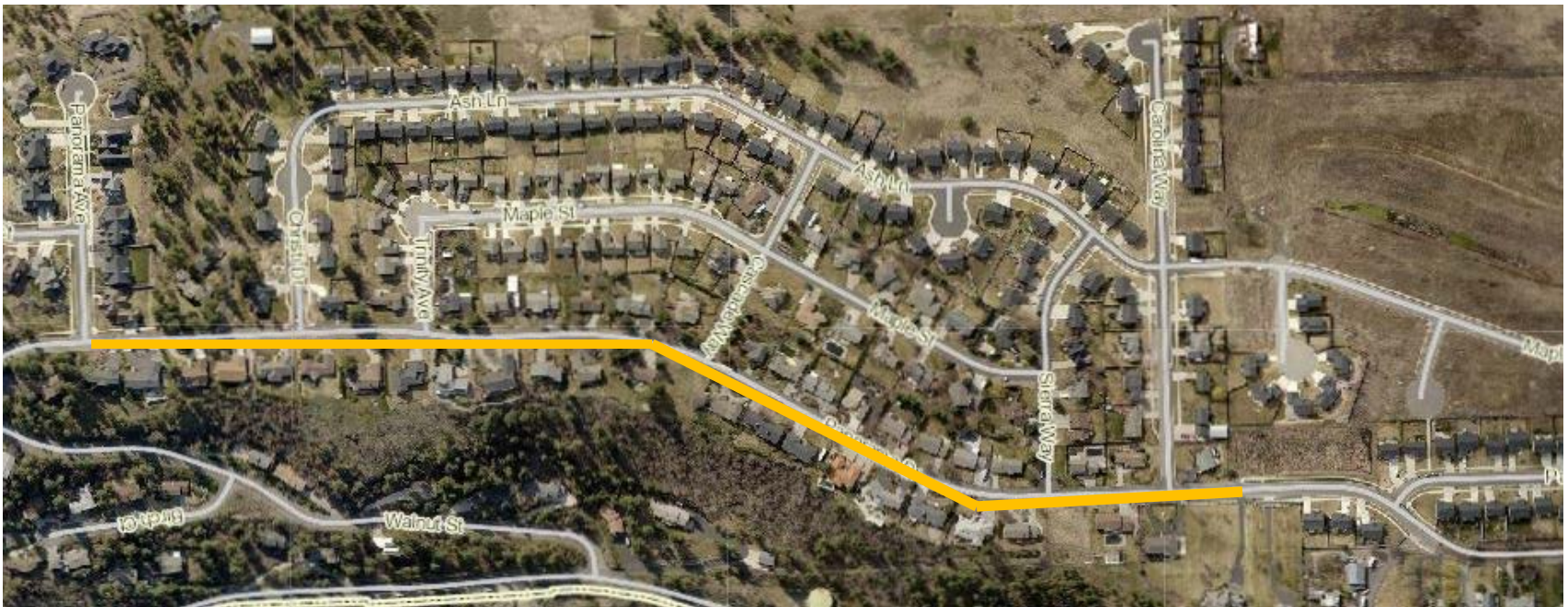


Sidewalks

- ▶ Change in funding
 - Sidewalks will not be included
 - Strong likelihood of funding in the next two years

Sidewalks

- ▶ Area of possible sidewalk
 - Bluff (East) side of Panorama Drive



Thank You

