

Ben Burr Trail

PROJECT ALIGNMENT



PROJECT ALIGNMENT



COMPREHENSIVE PLAN

- “Spokane features three major transportation pathways or trails that are shared by pedestrians and bicyclists. These are the Ben Burr, Fish Lake, and Centennial trails... These three facilities serve both a recreational and transportation function for pedestrians and bicyclists.”

PAST EFFORTS

- Project has been under consideration for 20 years or so
- In about 2005, EC neighborhood council asked city to apply for money to implement Ben Burr Trail improvements & connections
- City Capital Programs applied for and received federal transportation funds
- One of the requirements when receiving federal transportation funds is paving and certain width requirements

PAST EFFORTS

East Central Results of 2009 Neighborhood Planning Ben Burr Trailheads

Presentation to City Council
Town Hall Meeting
East Central Community Center
March 28, 2011



Future Ben Burr Projects

- Capital Programs obtained grant funds for engineering design work to prepare for paving the entire trail and extending the trail towards the Centennial Trail.
 - Underway now
 - Step closer to funding for construction

Congratulations to East Central Planning Stakeholder Group

- Jim Hanley
- Lois Irwin
- Joy Hart
- Bob Moch
- Douglas Schroeder
- Jerry Numbers
- Keith Raschko
- Janice Raschko
- Craig Sweat
- Larry Stuckart
- Holly Martin
- Darrell Smith
- Dave Clack
- Angie Dirschel
- Al Bibbins

CURRENT STATUS

- Project is in early stages of design
- This meeting is to present preliminary design, solicit public input
- Presentation is made at this early stage so public input can be incorporated
- Design is on hold pending solicitation of additional public comment

CONNECTIONS



Segment #1 – Existing gravel trail



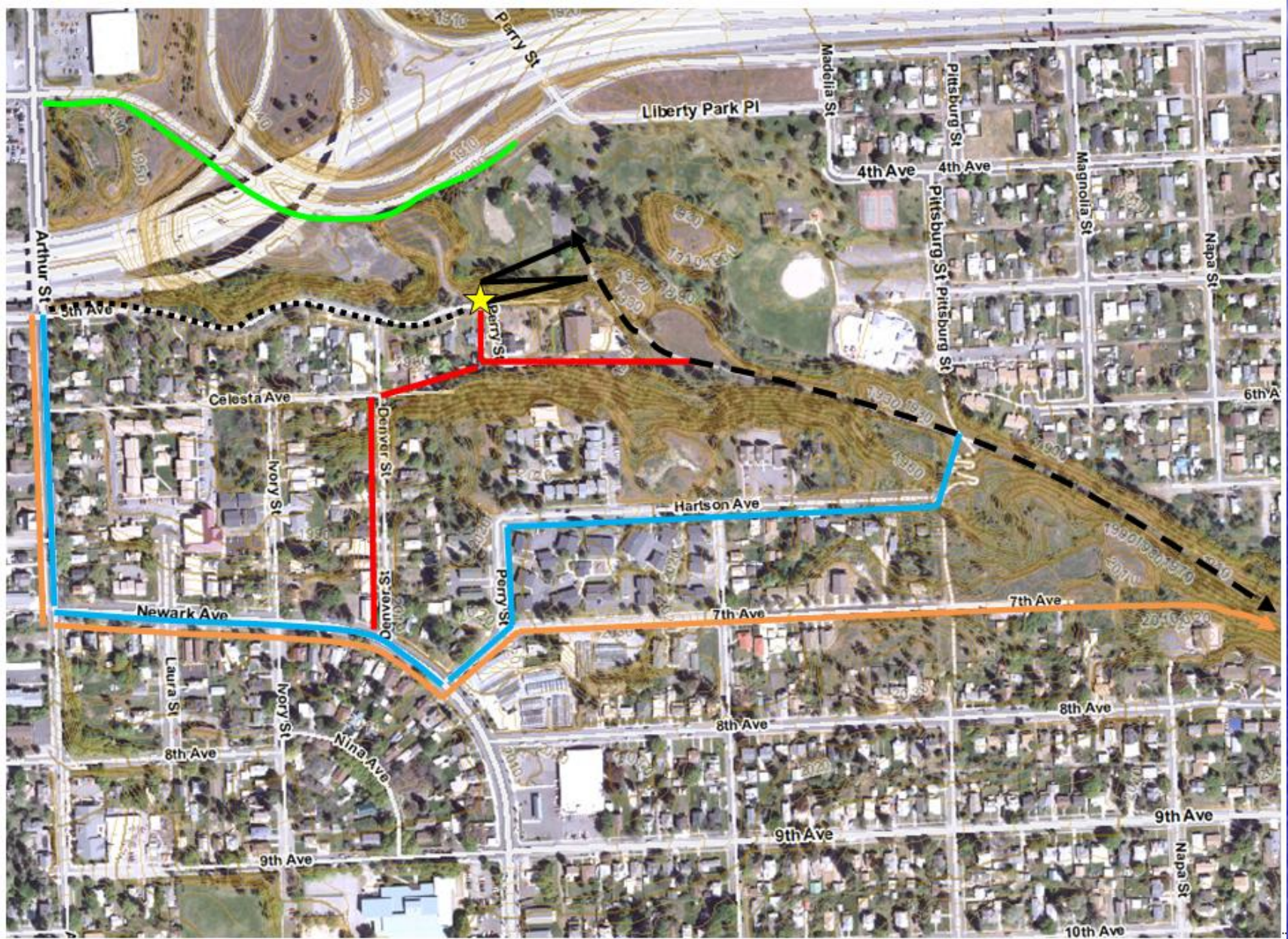
Segment #2 – Liberty Park & 3rd Ave.



GRADE LIMITATIONS



CONNECTIONS



Segment #3 – Liberty Park to MLK



Future MLK bike lanes, trail when Brown develops

Split path beneath bridges

New trail alignment

Shared use beneath freeway

Liberty Park

Segment #4 – MLK to Centennial Trail



FUNDING AGENCY REQUIREMENTS

- Shared use trail – pedestrians & cyclists
- Paved
- 12' ideal, 10' minimum paved trail width
- 2' shoulders each side
- Protective railing where there are sharp dropoffs

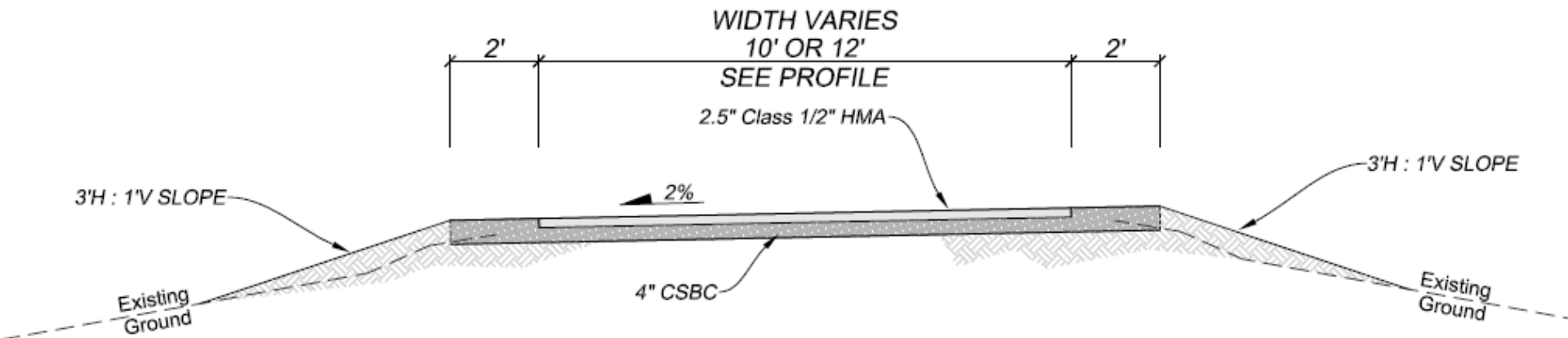
CENTENNIAL TRAIL AT MONROE BRIDGE



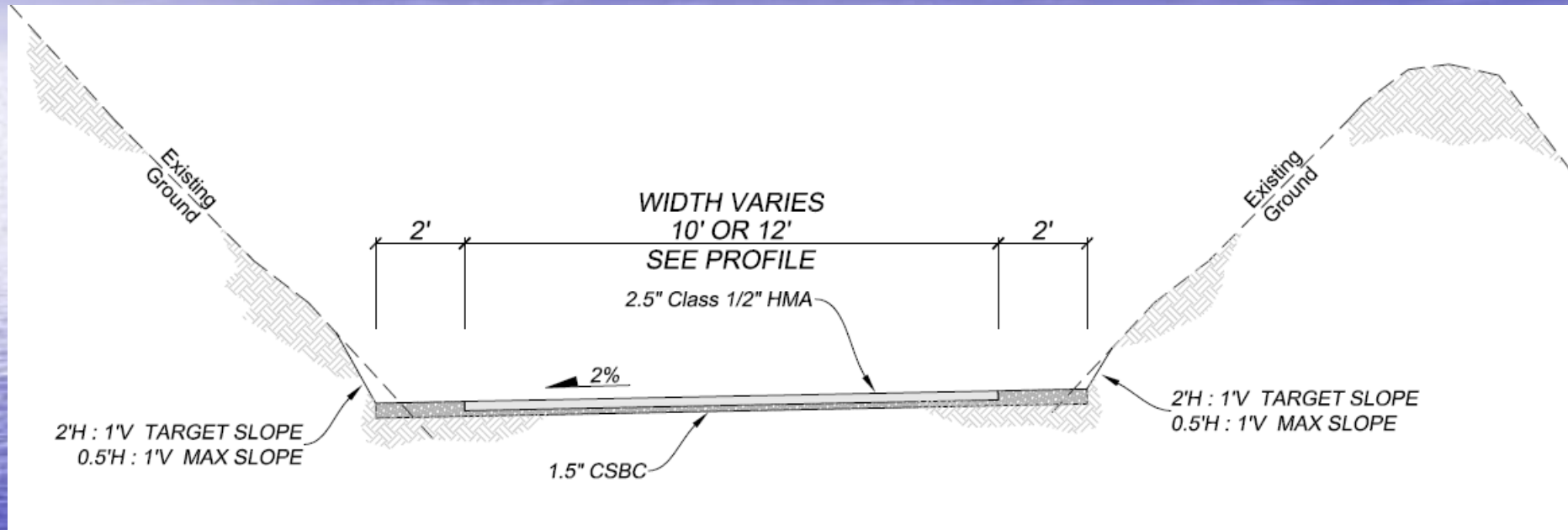
CENTENNIAL TRAIL AT MONROE BRIDGE



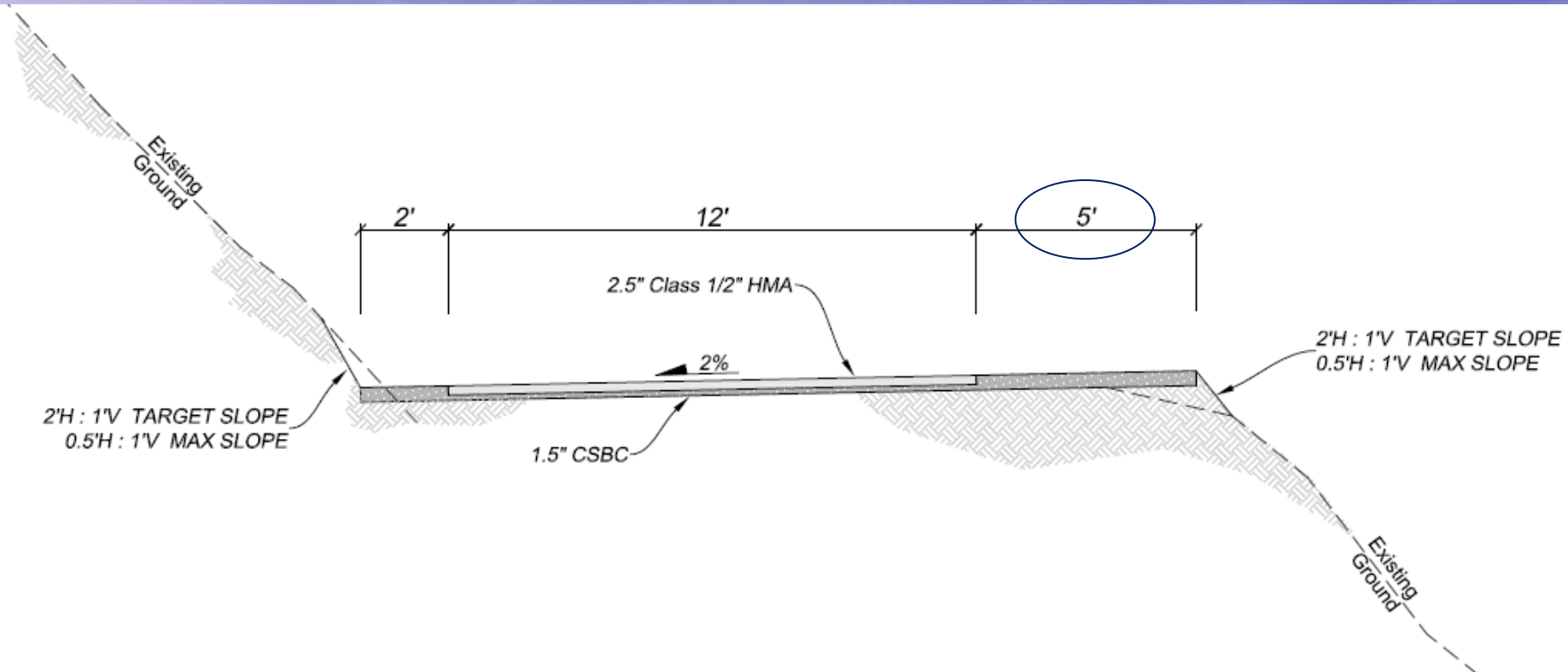
IDEAL TRAIL SECTION



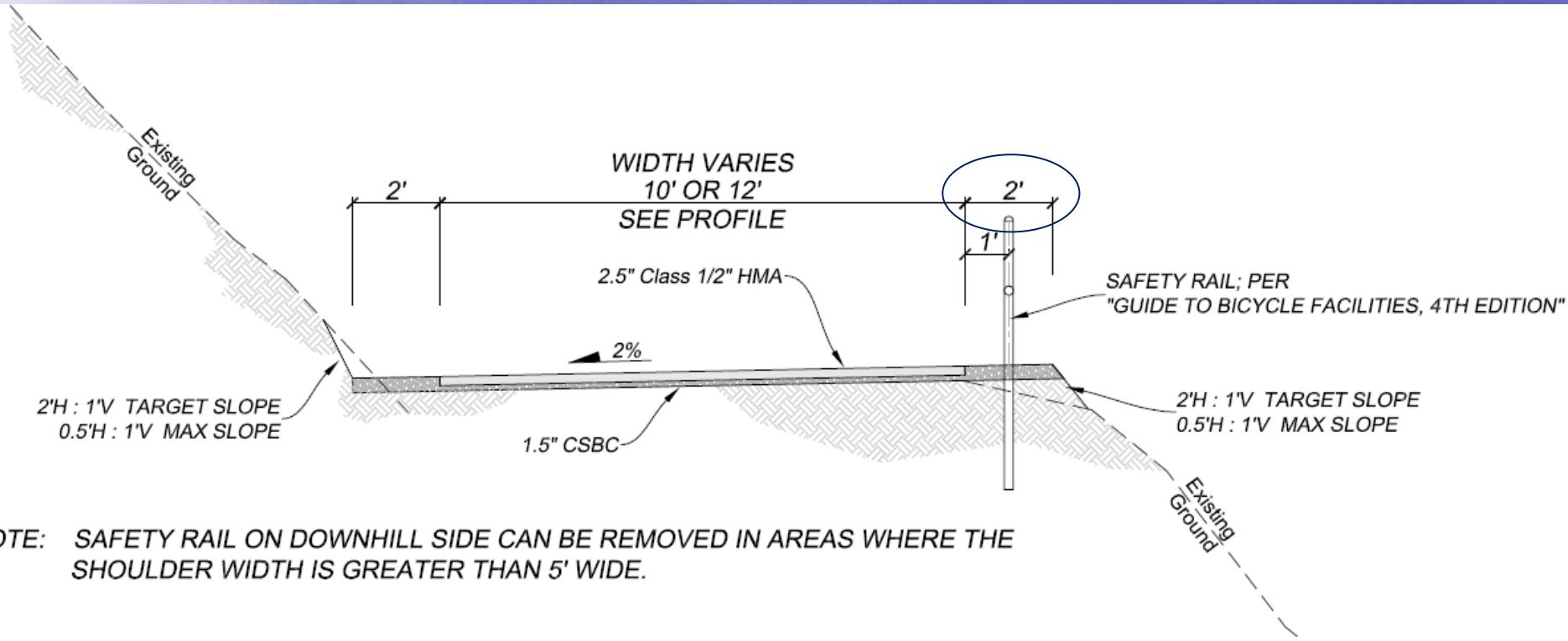
TRAIL SECTION THROUGH RR CUT



TRAIL SECTION ON RR CUT



TRAIL SECTION ON RR CUT



PROJECT DETAILS

- Design & ROW acquisition
- Construction 2014
- Federally funded so everything more complicated

FISH LAKE TRAIL - BEFORE



12 3:28PM

FISH LAKE TRAIL



COMMENTS

- Fill out comment card or
- Email jhappy@spokanecity.org or
- Leave comments or get more info at:
<http://beta.spokanecity.org/blog/2013/10/25/input-sought-on-ben-burr-trail-improvements/>