

Spokane Flag Redesign

Official Voters Guide



**Spokane
Flag
Commission**

Welcome!

The vote you are about to participate in reflects the culmination of almost two years' work by ordinary Spokane citizens, City officials, and dozens of artists from around the country. Spokane's current flag (show on the next page) has been a subject of mockery in vexillological (that's a fancy word for the study of flags!) circles for years. However, it wasn't until Spokane resident and now Flag Commission member Max Nesbitt presented a proposal to redesign the flag in early 2019 that the ball officially got rolling and gears began to turn. Spokane Councilmember Kate Burke took up Max's call and proposed a resolution to form this Commission which passed that summer, and the Commission was formed that fall. Comprising voices of a multitude of perspectives, the Commission represents a cross section of Spokane –artists, students, politicians, civil servants and more. We considered an initial 400 designs and a public poll held in December 2020 narrowed it down to 100 semi-finalists. The Commission has selected these 12 finalists because we feel they reflect a diversity of styles and inspirations while falling within the guidelines we set out in our opening meetings. Happy voting!

Spokane Flag Commission

Joshua Hiler, Chair – Council Appointee, District 3

Max Nesbitt – Council Appointee, District 2

Corey Marcoux – Council Appointee, District 1

John Mujica – Council Appointee, At Large

Matthew Budke – Mayoral Appointee

Glenn Ford – Spokane Tribe

Jeff Ferguson – Spokane Tribe

Andrew Whitver – Spokane Arts Commission

Scyla Dowd – Youth Appointee

Kate Burke – City Council

Betsy Wilkerson – City Council

The Current Spokane Flag



Adopted in 1975, this flag has seen little to no use since then. Only two copies are known to exist, and neither are commonly displayed to the public.



From the Artist:

We're blessed to have a beautiful river running through our city. As the river flows, it cleanses. That's the Spokane I love; a city of change and acceptance that washes away the old ways and makes way for new ones.

The sun represents the Salish meaning of "Spokane" – "Children of the Sun". It's important to continue honoring those that were here before us. The blue lines represent the river and the falls, always bringing beauty and change to our city. The green represents the trees and lands that make up the area. As Children of the Sun we are the land and the land is us. We must protect it.

Derek Landers

Age 48 – Spokane, Washington



About the Artist:

Derek Landers is the art director at *The Great PNW*, co-founder of *Spokane Print and Publishing Studio* and principal of his own design studio *Landers Design*. A designer for over 20 years he specializes in branding, logos, and gig posters focused on clean and bold imagery. A lifelong Spokane resident, he is passionate about where he lives and deeply appreciates its history and indigenous ancestors. He feels very fortunate to have grown up in such a beautiful and diverse area and continues to enjoy all it has to offer with his family and friends.



From the Artist:

A municipal flag has a difficult job to do. When done right, its simple, bold design effortlessly conveys the individual spirit of a city.

It must celebrate sacred symbolism, without overcrowding or cluttering; its colors must be minimal, relevant and engaging; every line or object must have a purpose. Combined, these elements create a synergy that makes the design an efficient and representative emblem of its city.

This flag does just that.

Salish for “Children of the sun” or “sun people”, the word Spokane (Spokan) is at the core of our city’s being. Literally at the center, or core, of this flag design is a rising sun, signifying the optimism of new beginnings as the people of Spokane continue to reinvent our city.

Flowing in front of the sun are two cascading ribbons showcasing Spokane’s majestic waterfalls. This natural feature that flows through the heart of our city is rare and unique – pulsing its energy and life (quite literally) through all of us.

The striking, modern and minimal color palette of my design brings to life those features as well as these other important elements of our region:

- Acting as a backdrop, the deep forest blue-green represents our magnificent local parks and the vast, uncrowded spaces that envelop our city.
- The two colors included in the abstract depiction of the falls have two distinct meanings: one represents the lakes that dot our landscape, the other the Spokane river and its tributaries that wind in and out of our communities, weaving us all together.
- The design’s centerpiece – the burning, red-orange color is a nod to Spokane’s signature native fish, the iconic Redband trout.

It’s easy to imagine this brightly colored flag flapping in the wind atop the county courthouse or a downtown high rise – contrasted against a brilliant blue sky and instantly recognizable when scanning our skyline.

The attractive design and color scheme could also be re-imagined as art for homes, institutions or establishments. They could be printed poster art, embroidered patches, or simply hung proudly as a traditional flag.

This distinctive design works overtime for the viewer. It’s succinct curves, shapes and color scheme all have a shared goal of bringing together meaning and symbolism to represent a bright future for the city of Spokane.

Amy Jennings

Age 47 – Spokane, Washington



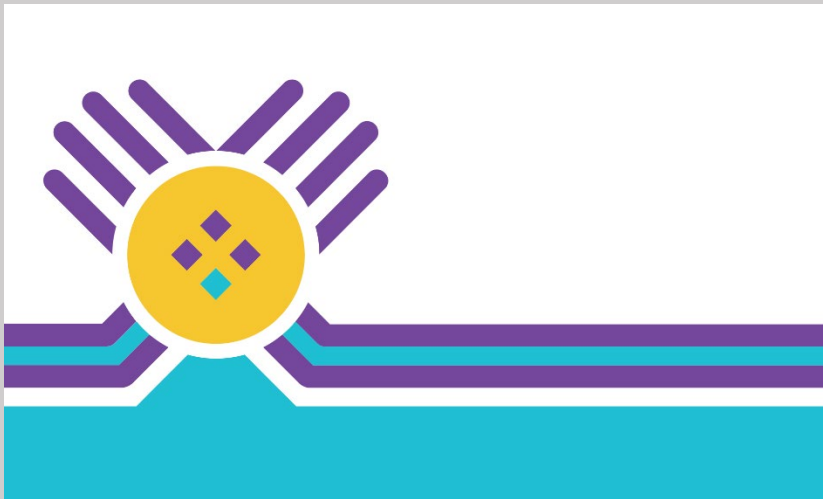
Local illustrator, Amy Jennings, was born and raised in Spokane and received her degree in graphic design from MSU-Bozeman. She is the owner of *Spokaloo* where she brings to life Spokane icons and creates custom, bold, colorful maps of people's favorite places.

For the better part of eight years she has worked as a graphic designer at the health district. Some of her best work was honored with a Gold ADDY for the Walk Bike Bus program. Most recently you can find her goat, marmot and alpaca billboard artwork featured in COVID-19 campaigns throughout the city.



From the Artist:

This design was inspired by the Spokane Salish peoples who settled here. Using the sun form in the center, with rays of Tipi, I wanted to show the literal meaning of children of the sun. The river form in the center from left to right comes from the language of the Salish peoples written word for River/Water. This symbol was taken directly from the Salish tribe of Spokane and input into this design.



From the Artist:

This design was created in hopes of showing that there is more than one tribe within the Salish peoples of the PNW. The sun is the literal meaning in children of the Sun, the diamonds inside the sun represent the 4 major Salish Tribes, with the bottom diamond representing Spokane, the focal tribe of this design. The hand forms coming from behind the sun are meant to mimic the tops of Tipi and to show that we are coming together as a community. The blue represents the Spokane river, where the Salish peoples of Spokane settled.

Patrick Farnworth

Age 29 – Spokane, Washington



About the Artist:

My name is Patrick Farnworth, I am an associate UX designer with Milkshake Interactive, a student in the Spokane Falls Community College Graphic Design program, President of the Graphic Design Club at SFCC, Father and Husband. When I'm not designing, I like to spend time with my family, our cats, and dogs, and hiking the trails that are on our property.



From the Artist:

My flag is solid lilac with white elements of a fish, lilac flowers, and a pavilion arc.

The lilac color is the most dominant feature of the flag with the art in white only. I wanted the flag to simply point to its imagery without the use of extra colors. There are also three symbols included that represent Spokane's nature, Native culture, and history. The overall goal was to incorporate these four pieces into a unified and balanced cycle.

Our nature. Spokane is settled in the middle of a beautiful landscape with many attractive natural elements. It has a particularly stunning lilac blooming season good enough to give us our nickname the "Lilac City".

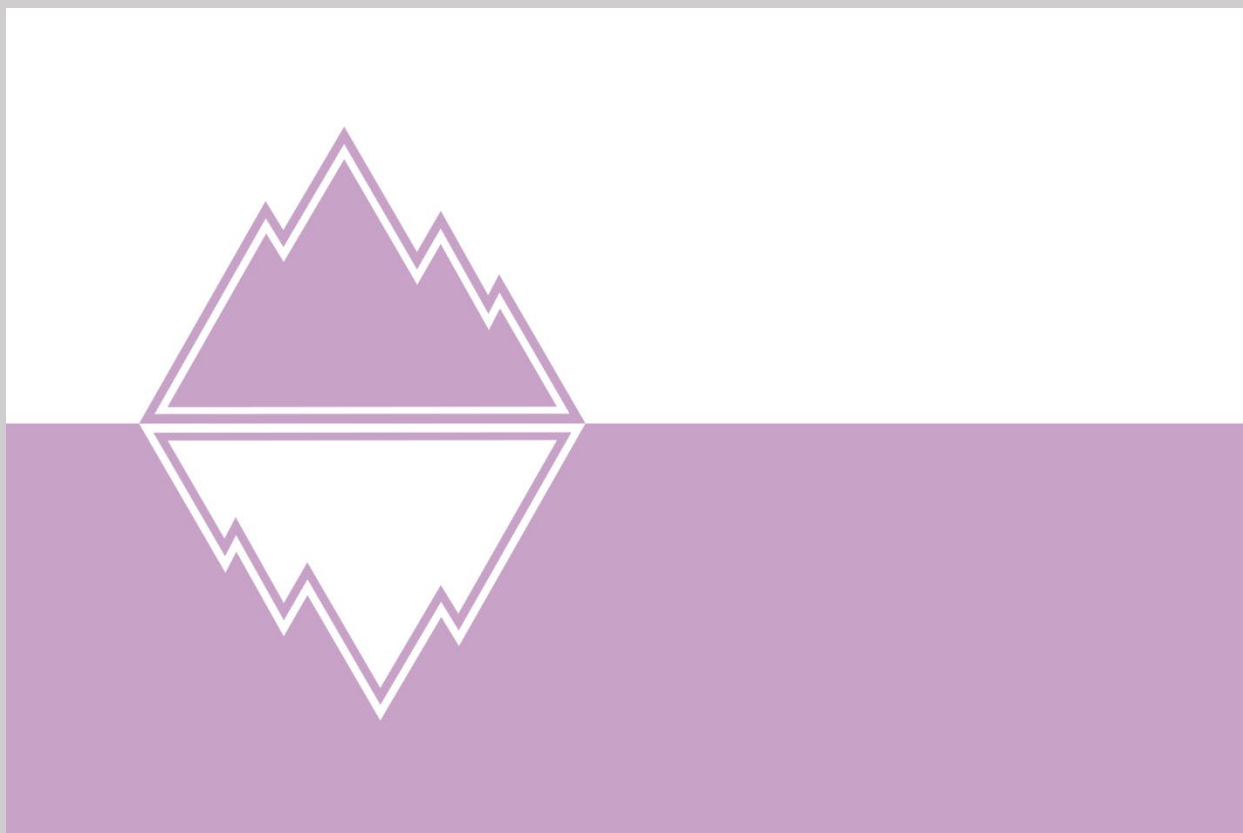
Our Native culture. It was essential to include a Native piece to the flag and bring attention to the local heritage. The fish is a remembrance of the connection between our Native people and the river and its many resources. It is placed to ground the right side of the art.

Our History. Lastly, the Pavilion points to our fun, unique, and influential history. Even with the latest park updates the Pavilion is still so iconic to our city. Although it is typically depicted in its entirety, I wanted to include it as a slice of an upward view so as not to overpower the other elements. It also provides balance to the fish on the opposite side.

Rachel Clabaugh

Spokane, Washington

I was born and raised in Spokane and still call it home. I am an EWU graduate with ten years of Graphic Design experience. Currently I am a stay at home mom and enjoy the occasional freelance project. My husband, three kids, and I love to visit our local parks and lakes, and enjoy Spokane's food culture.



From the Artist:

My design encases a typical horizontal two-stripe background using the colors of Lilac and White. The main focal point on the flag is a mountain design, depicting the mountains of Kit Carson and Spokane. I used these mountains in particular, because they are geographically close and important to Spokane. The mountains are reflected, in order to represent the waters of the Spokane River, although, neither mountain actually borders it.

I chose the color lilac, in part, to represent the nickname of “The City of Lilacs” as well as pay homage to the now sort-of infamous 1958 Spokane flag. This color is also highly valued by the native Spokane tribe (as well as other surrounding tribes). In addition, purple shades are historically uncommon for flags, as many years ago it was a more expensive color to produce. While this is no longer the case, this color will make the flag stand out when displayed among others.

White was chosen mostly as a counter-color to balance out the purple, and I did not want anything too dark to clash. However, white can symbolize the color of the snow-tipped peaks of the aforementioned mountains.

Gavin Cook

Age 14 – Vancouver, Washington



About the Artist:

Hello! My name is Gavin R. Cook, and I've designed the flag I call the "Two-Peaked Banner" for this contest. While I may live down South in Vancouver, I've been to and through Spokane many times and have loved it, which is why when I heard that the city was having a contest, I knew I wanted to enter. Especially so, since one of my pastimes is making flags.



From the Artist:

This 'Children of the Sun' (Sun People) flag is inspired by the Spokane tribe, after which the city is named. Unless the city changes its name this flag will be forever relevant. The front and back views of the flag will appear identical. No text or seals are incorporated into this flag. The flag consists of only four high contrasting significant colors, lilac, blue, yellow and orange. The top lilac stripe pays homage to the official city nickname 'Lilac City'. Lilac, the average color of most lilac flowers is used here to symbolize the tough, hardy nature of its people. The bottom dark blue stripe represents the Spokane River. Blue also represents patience and understanding. The yellow colored rising and/or setting sun rays depict energy and happiness. Yellow is a cheerful and energetic color that brings fun and joy to the world. It also stands for optimism, positivity and intellect. The orange colored sun rays reflecting upon the river signify courage and sacrifice. Orange also exudes warmth and joy and is considered a fun color that provides emotional strength. The entire sun's perimeter rays are made up of 16 individual teepees honoring all Indigenous and European cultures, creating a circle of inclusiveness and equality. The word teepee means 'they dwell'. The conical shape of the teepee makes a perfect shape to symbolically emulate the sun's rays and represent all cultures who dwell there. At first glance this element may not be immediately obvious. Placed at the center is a yellow and orange circle representing the rising/setting sun. A circle is a continuous curved line with every part of that line being the exact same distance from the center. It symbolizes perfection, infinity, oneness and wholeness. In Native American culture it represents the sun, moon, the cycles of the seasons and the cycle of life, from life to death to rebirth. The circle is found everywhere in nature. At the very center of the yellow and orange sun are three dark blue silhouettes of children of various sizes standing hand in hand with open arms to symbolize one cohesive community supporting each other and welcoming visitors and guests.

Adrian DeRosier

Minneapolis, Minnesota



About the Artist:

Adrian grew up in a small town in rural Minnesota. After moving to Minneapolis, Minnesota he received an Associate of Science Degree in Structo-Architectural Drafting and Design. Following a 22 year career in the trade show industry he retired from a Senior CAD Technician position where he created technical construction and set-up drawings for a national custom trade show exhibit manufacturer. Being an avid flag enthusiast and collector he joined the North American Vexillological Association. His retirement goal is to leave a legacy of dynamic state, county, and city flag designs across America reigniting and inspiring community pride.



From the Artist:

This flag has its roots in the original 1912 flag of Spokane, but with new colors and updated symbolism to better represent what the city is today.

The purple lilac on the left-hand side of the flag is for the iconic lilacs that gave the city its nickname. The yellow sun represents the city and its namesake, the Spokane Tribe. The word Spokane is Salish for “Children of the Sun.” The 20 points of the sun represent the 20 counties of Eastern Washington.

Together, the sun and the petals represent a family sitting around a central hearth in the triangular shape of a tule mat lodge, the traditional home of the Spokane people. This represents the culture and way of life of the Spokane Tribe. It also represents family and community in the city of Spokane.

Blue represents the rivers and skies of the Spokane area. It is also a callback to the 1912 flag, which was mostly blue. Green represents the farms, hills and pine forests of the Inland Northwest. It also represents Spokane’s place in Washington, The Evergreen State. Yellow and White represent the gold and silver that brought prospectors and their families to the area during the gold rush.

The white triangle represents Mount Spokane and the rugged, mountainous landscape of the Inland Northwest. The white line represents the Spokane River cutting through the middle of the city. The line opens to become a triangle on the left side of the flag, representing how the Spokane River flows west and opens to become Spokane Falls. Looking at it from left to right, the triangle narrows into the line to reflect how people of all beliefs, creeds and colors come together as a united, proud city.

The major shape on the flag, a triangle attached to a line, is a striking, memorable layout representing the way that the Spokane River opens to become Spokane Falls. Every color on the flag has a symbolic meaning, and the three major colors, green, white and blue, provide a striking contrast while reflecting the color palette of the Spokane area. Every symbol in the design is stylized, and the symbols work in different combinations to represent different things, from the triangle representing Mount Spokane to the lilac and sun together representing family and community in the City of Spokane, and the way of life of the Spokane Tribe.

Kenn McDonald

Kitchener, Ontario



About the Artist:

Kenn McDonald is a second year college student majoring in History and Political Science, and who has an interest in the history, symbolism and design of flags.



From the Artist:

When designing the Ponderosa Flag, I prioritized simplicity and symbolism with the intent of having a flag that is easily recreated and recognizable.

1. The Ponderosa Flag's color scheme—green, blue, and yellow—is shared with the Washington State flag.
2. The Ponderosa Flag features three symbols which have been, and will continue to be, prominent features of Spokane's landscape and history:
 - a. The Ponderosa Pine
 - b. The Spokane River
 - c. The Sun

The Ponderosa Pine: Spokane's official tree. Still towering prominently throughout the city, the Ponderosa Pine can live for hundreds of years and would have been a notable landscape feature when the region's earliest inhabitants arrived up to 13,000 years ago.

The Spokane River: The middle blue band of the flag represents the Spokane River, the city's defining natural feature. The river was the source of sustenance for the region's earliest inhabitants and continues to provide drinking water (via the Spokane Valley–Rathdrum Prairie Aquifer) to today's residents.

The Sun: The Spokane Tribe's name comes from the Séliš language and means "Children of the Sun." With respect to the region's early inhabitants, and as an homage to the city's current flag, the Ponderosa Flag features a bright, yellow sun.

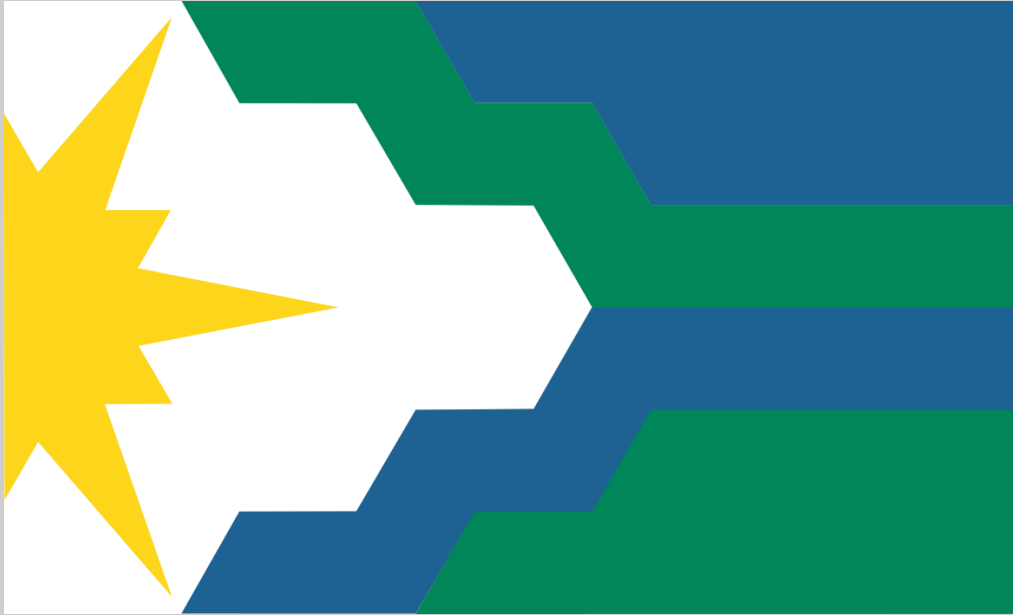
Jody Zellman

New York, New York



About the Artist:

Jody Zellman was born and raised in Spokane. During his 18 years in the Lilac City, Jody received degrees from Jefferson Elementary, Chase Middle School and Ferris High School. Jody now lives in Brooklyn, NY nowhere near a garbage goat.



From the Artist:

This design is an update to our founding flag of 1912 with additional elements to represent treasured aspects of our surroundings, our past, and our future

Yellow Star on a White Field - Sunrise

A rising six-pointed sun represents the six petals of the indigenous Camas flower, while also recalling the Salish translation of Sp'q'n'i to 'Children of the Sun.' For many Americans, Washington State brings to mind the gloomy, rainy climes of the Westside. However, the sun rises first on Eastern Washington where we enjoy a dryer, sunnier environment.

Upper Blue Field - Open Skies and Clean Air

We are greeted daily by the brilliant skies and vistas of our region (aside from fire season...), made more dynamic by the presence of Fairchild Air Force Base and historic Felts Field.

Stepped Green Band - Ridges, Hills, and Valleys

We are fortunate to have direct access to so many beautiful natural areas, which allow us to hike the foothills of the Rockies, bike the Centennial Trail, and ski Mt. Spokane.

Stepped Blue Band - River, Falls, and Aquifer

We are blessed by the waters of the Spokane River which flows through our city, the roaring falls of Riverfront Park, and our abundant aquifer.

Lower Green Field - Verdant Fields, Orchards, and Forests

We are embraced by the rolling hills of the Palouse, plentiful orchards, and rich forests which have led to the success of our region.

Unity

The joining of these aspects represent the unique place that is Spokane, as a city and as a people. Each element stands on its own but finds strength in unity.

From left to right, lines at opposing trajectories step closer and closer until they are ultimately unified in purpose and direction. This clean and recognizable design reflects our past while showing unity in purpose to protect and enjoy the many treasured aspects of Spokane.

Tom McHugh

Age 36 – Spokane, Washington



About the Artist:

Born and raised in Spokane, near Plante's Ferry Park, exploring the Centennial Trail all the way from Idaho to Downtown. Youngest in a family of five.

Graduate of SFCC and EWU with a BA in Visual Communication Design. Lived and taught English in Nagahama, Japan with my wife Cindy in 2008. Upon our return I enjoyed my time with Spokane's TRS program and the Carlyle Care Center.

Currently, I am the Lead Custodian of Otis Orchards Elementary and couldn't imagine a more fulfilling place to work. My current project is a mural detailing local history for our students.



From the Artist:

Spokane is known for many things. Natural beauty is at the top. The green background symbolizes our “near nature, near perfect” mentality, representing the parks, trails, trees and mountains that surround us. Green also symbolizes the growth of the city, from its incorporation as “Spokan Falls” in 1881, to the railroad, to Expo ’74 and beyond.

The circle represents Spokane’s history. The top portion of the circle represents the sun. The first people to live in the area were the Spokane Tribe. In Salish, Spokane means “children of the sun” or “sun people.” The blue in the bottom part of the circle represents Spokane Falls and the river that runs through the heart of our city. The blue in the design peeks through a representation of the Monroe Street Bridge, one of our most iconic landmarks since its construction in 1911.

While the inner circle represents our history, the outer circle of purple represents our official nickname, the “Lilac City.” Lilacs have flourished since their introduction to the area in the early 20th century.

To me, the combination of all of these design elements say “Spokane.” This is a flag that represents our identity, our heritage and who we are as a community.

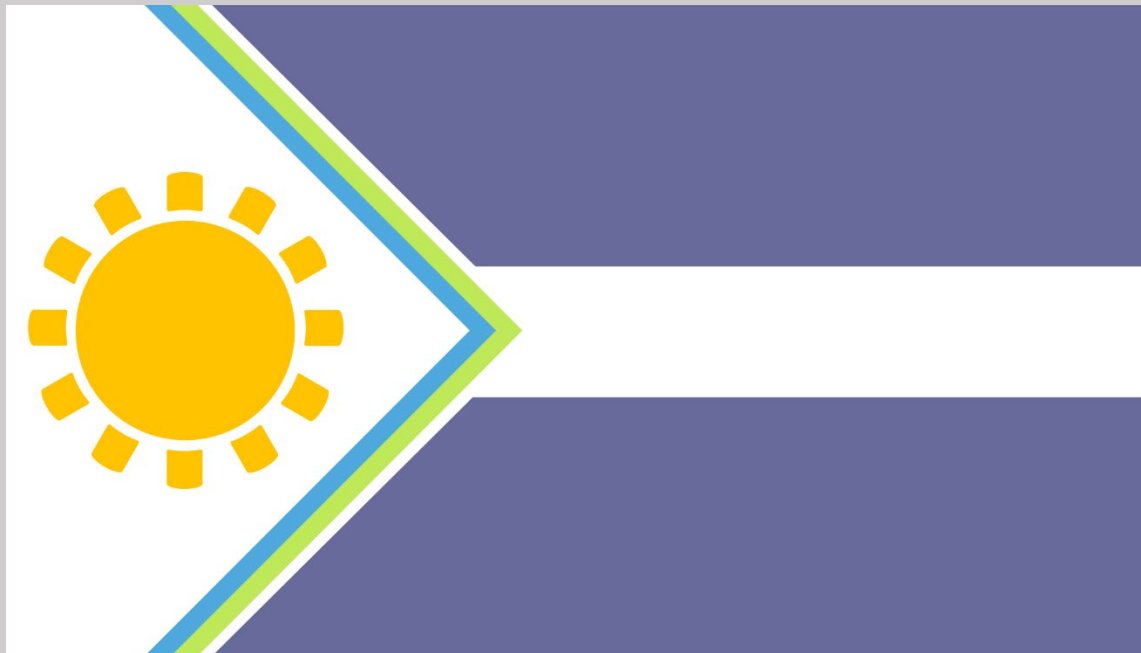
Nick Schaffert

Spokane, Washington



About the Artist:

Nick Schaffert is a graphic designer with a passion for the outdoors. Find him running local trails, exploring nature with his family, and enjoying an IPA at one of Spokane's many breweries.



From the Artist:

I designed this Flag for the People of Spokane and to have a special meaning for Spokane and its people; Past, Present and Future. The Sun means Children of the Sun in Salish, which is the Spokane Tribe's native language.

I put in a Blue and Green Chevron to represent the Spokane River in blue and the Ponderosa Pine Tree which is the Official City Tree in green, Blue and Green were also the Expo '74 Colors. The Lilac stripes represent what Spokane is known as "The Lilac City" and hosts the Spokane Lilac Festival and Armed Forces Torch Light Parade which celebrates Spokane Veterans Past, Present and Future and the Lilac Bloomsday which is the Largest Timed foot race in the World.

Ayden Franklin

Age 17 - Spokane, Washington

Ayden Franklin was born in Spokane Washington at Sacred Heart Hospital on June 30, 2003. He is a lifelong resident of Spokane and currently a Junior at Lewis and Clark High School and is a Boy Scout at Troop 313. Ayden Franklin designed his flag design for the People of Spokane - Past, Present, and Future and for it to be around for generations to come.