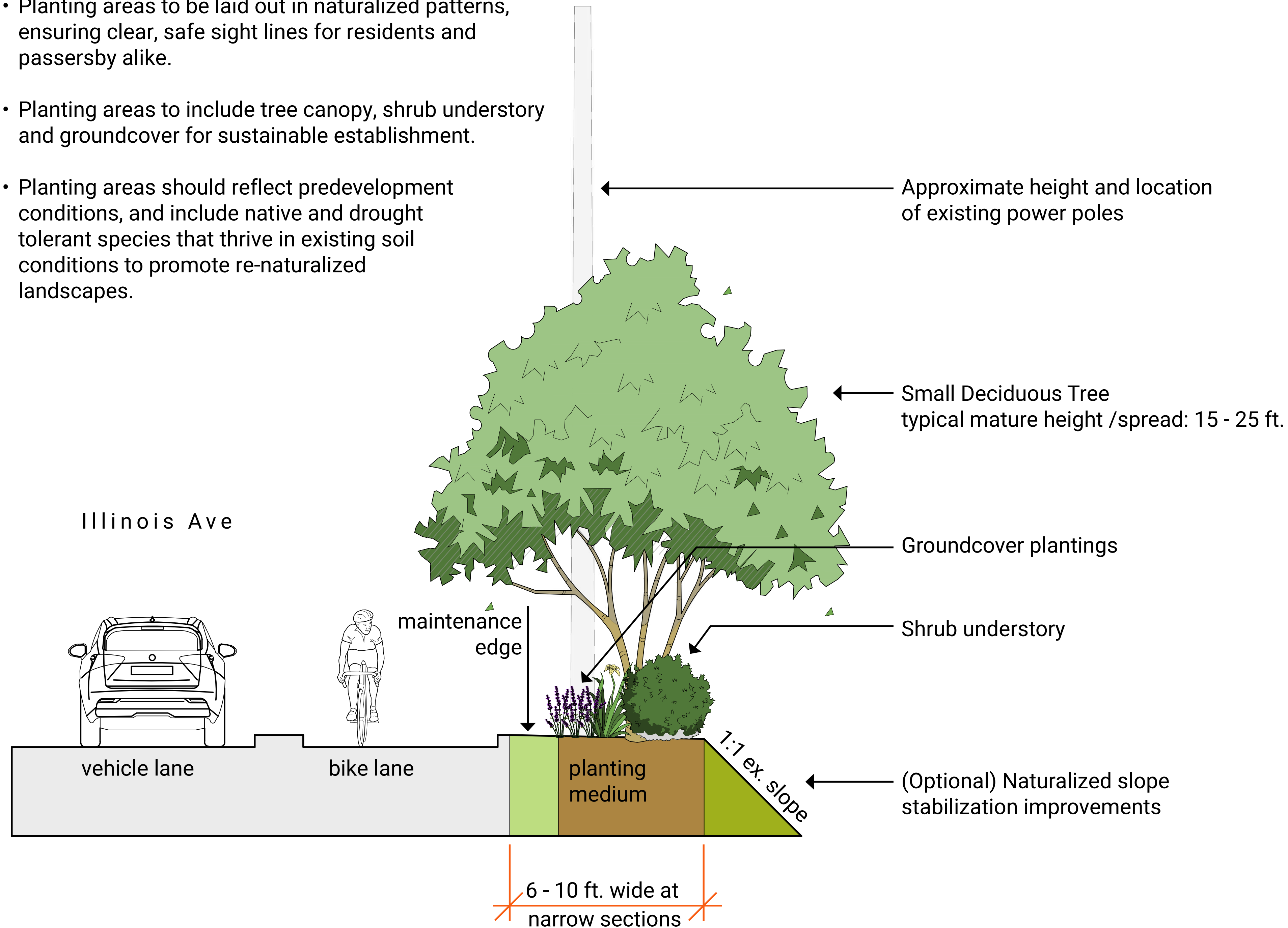


ILLINOIS AVE - PLANTING STRATEGY & PUBLIC WAYPOINT PLAN

Proposed Landscape Improvements

- Proposed trees to be selected from the City of Spokane Approved Street Tree List - Class I Under Power Lines.
- Planting areas to be laid out in naturalized patterns, ensuring clear, safe sight lines for residents and passersby alike.
- Planting areas to include tree canopy, shrub understory and groundcover for sustainable establishment.
- Planting areas should reflect predevelopment conditions, and include native and drought tolerant species that thrive in existing soil conditions to promote re-naturalized landscapes.



Typical Pilot Planting Area Section
not to scale

Existing & Historical Site Conditions

- South facing environment with strong solar exposure.
- Solar exposure creates dry soils. Drought tolerant plants should be considered for successful establishment.
- Predominant winds from the SW add to dry, harsh conditions.
- Project study areas are on slopes ranging from 2% to 1:1 ratio.
- Tree and understory plantings should occur on gentle slopes.
- Slopes between 2:1 and 1:1 ratios are suited for retaining walls or naturalized slope stabilization improvements.

Optional concrete walls serve as framing a waypoint area, retaining slopes, or informal ways to sit/stand/play.

Seating must have accessible options that provide comfort with features including back rests, arm rests, and warm materials such as wood.

Waypoint area surfacing to provide ADA accessibility and be maintained year round. Possible materials include concrete, compacted crushed aggregate, or paving stones.



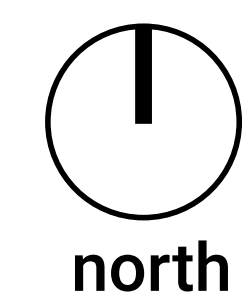
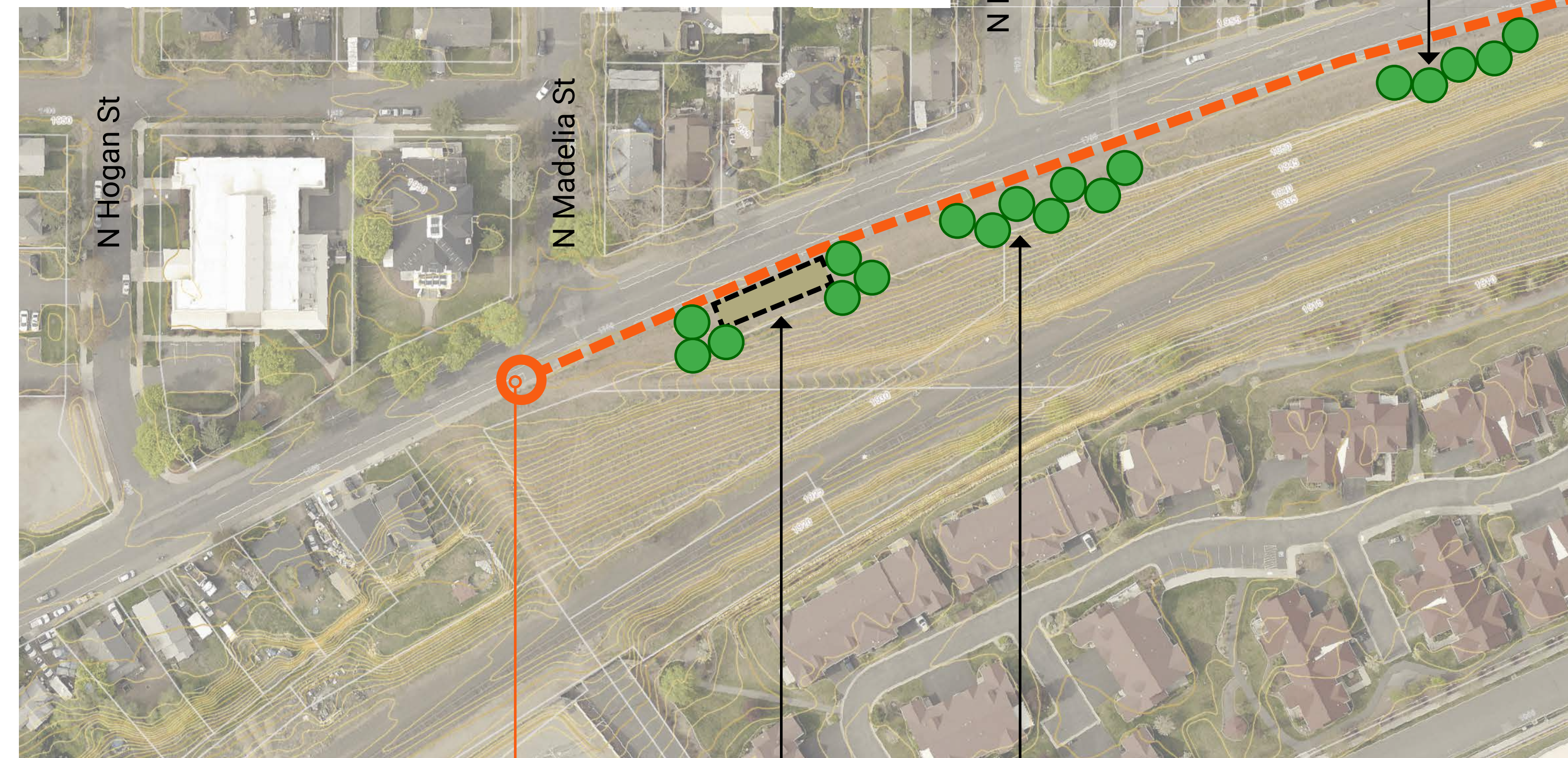
Waypoint Seating Area - Precedent Image

ILLINOIS AVE - PLANTING STRATEGY & PUBLIC WAYPOINT PLAN

Waypoint 1 Planting Schedule

Possible Deciduous Tree Species (Approximately 6 Total)

- *Acer glabrum* (Rocky Mountain Maple)
native species, adaptable soil, drought tolerant, fall color
- *Prunus sargentii* 'Pink Flair' (Sargent Cherry)
drought tolerant, spring flowering, pest resistant
- *Zelkova serrata* (City Sprite Zelkova)
compatible with urban conditions, fall color, pest resistant
- Mix of understory native shrubs, groundcover, and seed mix



Terminus of separated bike lane on Illinois Ave

Waypoint 1 Planting (6 trees)
Plant on corners to frame desired viewpoint

Pilot Planting Area A (7 trees)

Pilot Planting Area B (5 trees)

Pilot Planting Areas A & B Schedule

Possible Deciduous Tree Species (Approximately 12 Total)

- *Acer glabrum* (Rocky Mountain Maple)
native species, adaptable soil, drought tolerant, fall color
- *Amelanchier leavis* (Allegheny Serviceberry)
native species, spring flowering, requires moist soil
- *Prunus sargentii* 'Pink Flair' (Sargent Cherry)
drought tolerant, spring flowering, pest resistant
- Mix of understory native shrubs, groundcover, and seed mix

Legend

Proposed tree symbol
not to scale, locations are approximate

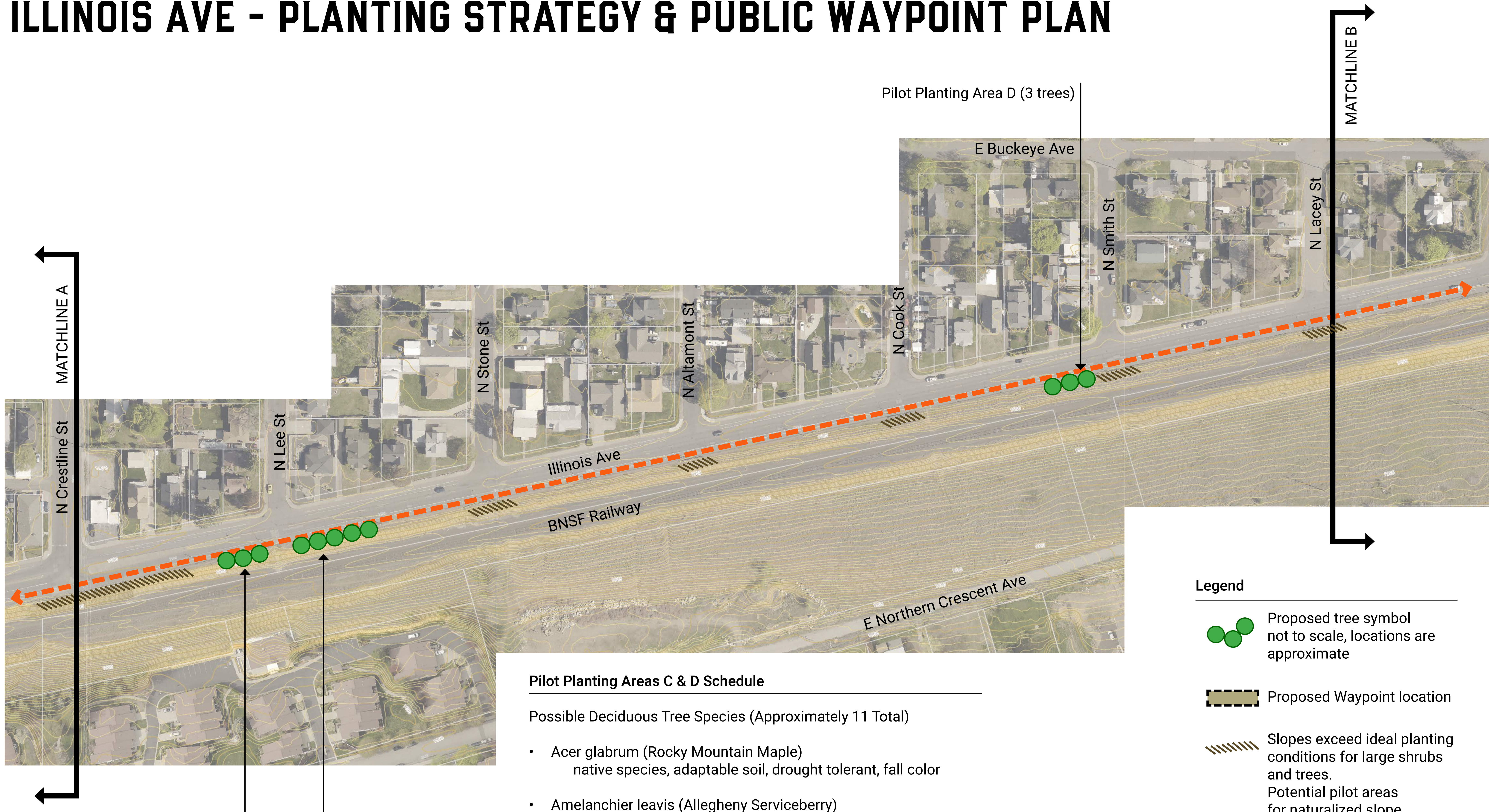
Proposed Waypoint location

Slopes exceed ideal planting conditions for large shrubs and trees.
Potential pilot areas for naturalized slope stabilization improvements.

Separated bike lane on Illinois Ave

MATCHLINE A

ILLINOIS AVE - PLANTING STRATEGY & PUBLIC WAYPOINT PLAN



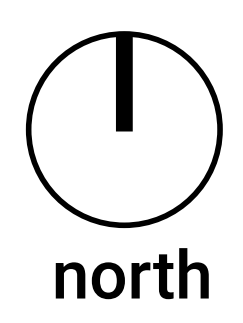
Pilot Planting Areas C & D Schedule

Possible Deciduous Tree Species (Approximately 11 Total)

- *Acer glabrum* (Rocky Mountain Maple)
native species, adaptable soil, drought tolerant, fall color
- *Amelanchier leavis* (Allegheny Serviceberry)
native species, spring flowering, requires moist soil
- *Crataegus viridis* 'Winter King' (Hawthorn)
adaptable soil, winter interest fruit, wide spread crown, thorns
- Mix of understory native shrubs, groundcover, and seed mix

Legend

- Proposed tree symbol not to scale, locations are approximate
- Proposed Waypoint location
- Slopes exceed ideal planting conditions for large shrubs and trees. Potential pilot areas for naturalized slope stabilization improvements.
- Separated bike lane on Illinois Ave

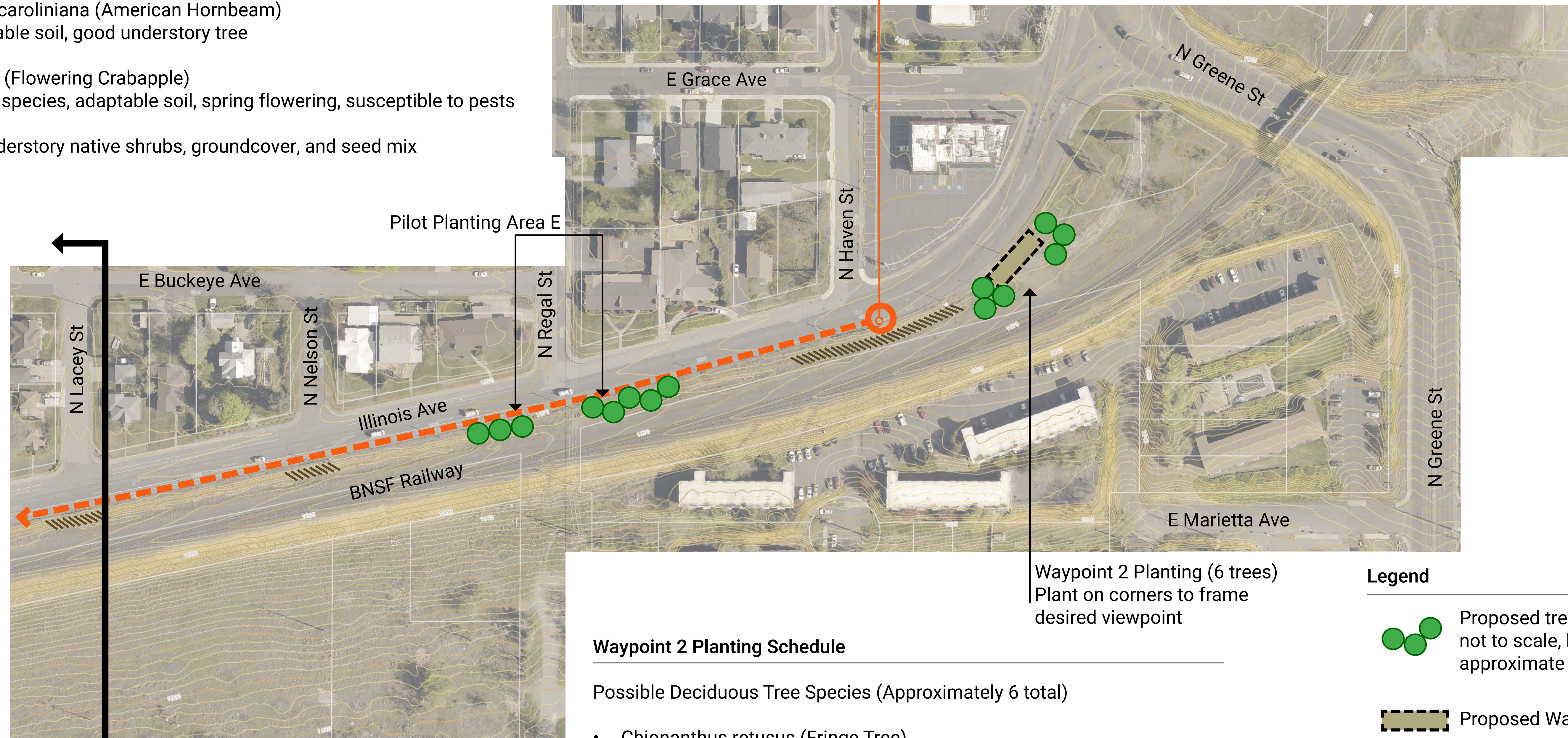


ILLINOIS AVE - PLANTING STRATEGY & PUBLIC WAYPOINT PLAN

Pilot Planting Area E Schedule

Possible Deciduous Tree Species (Approximately 8 total)

- *Carpinus caroliniana* (American Hornbeam)
adaptable soil, good understory tree
- *Malus* sp. (Flowering Crabapple)
native species, adaptable soil, spring flowering, susceptible to pests
- Mix of understory native shrubs, groundcover, and seed mix



Terminus of separated bike lane on Illinois Ave

Waypoint 2 Planting (6 trees)
Plant on corners to frame desired viewpoint

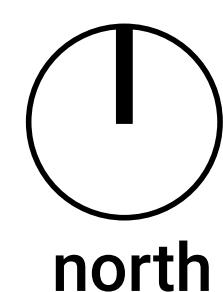
Waypoint 2 Planting Schedule

Possible Deciduous Tree Species (Approximately 6 total)

- *Chionanthus retusus* (Fringe Tree)
requires moist soil, good urban tree, pest resistant, spring flowering
- *Malus* sp. (Flowering Crabapple)
native species, adaptable soil, spring flowering, susceptible to pests
- *Zelkova serrata* (City Sprite Zelkova)
compatible with urban conditions, fall color, pest resistant
- Mix of understory native shrubs, groundcover, and seed mix

Legend

- Proposed tree symbol
not to scale, locations are approximate
- Proposed Waypoint location
- Slopes exceed ideal planting conditions for large shrubs and trees.
Potential pilot areas for naturalized slope stabilization improvements.
- Separated bike lane on Illinois Ave



MATCHLINE B