

Office of Neighborhood Services

2015 Mobile Speed Feedback Report

2015 Mobile Speed Feedback Report

Executive Summary

This report includes speed feedback data from mobile speed signs deployed during 2015. The report and data provided includes:

- Location information and map
- Length of time sign was in location
- Number of vehicles tracked by speed sign while in location
- Percentage and number of vehicles traveling over the posted speed limit
- Breakdown of the percentage of speeders going 1-5mph, 5-10mph, 10-15mph and 15 or more over the posted speed limit.
- Average speed of traffic that were tracked by the mobile speed sign

Overview of 2015 Mobile Speed Feedback Program:

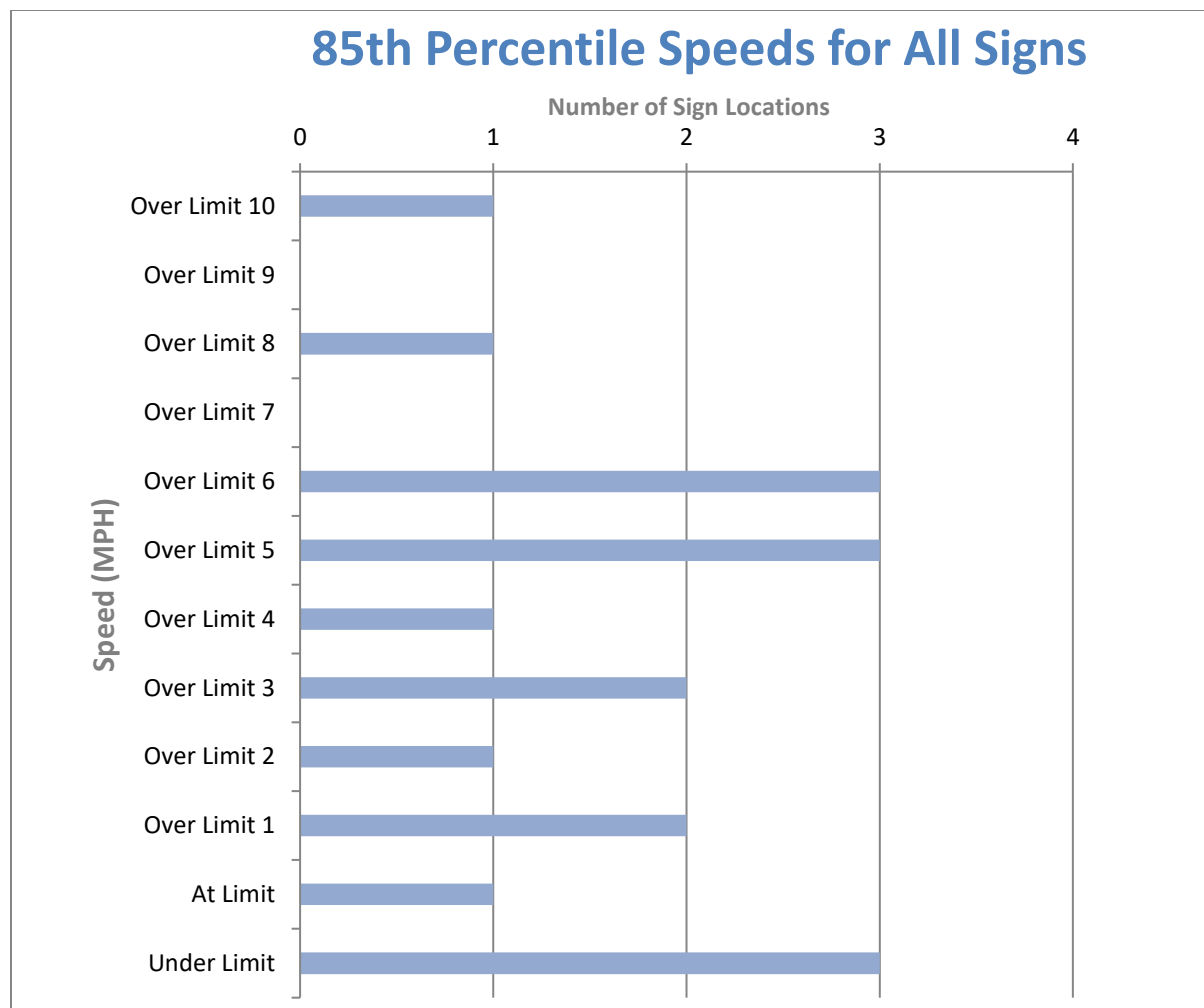
The mobile speed sign program provides six mobile speed sign trailers to be placed in neighborhoods for a two week period. An effort is made to evenly distribute the speed signs across all neighborhoods. The locations were based on requests and input from the neighborhoods of perceived speeding problems and locations.

There was some vandalism of the signs experienced during 2015 including the theft and significant vandalism of one sign rendering it unusable and beyond repair. Several other signs are experiencing various operational problems, primarily problems with SD card errors, resulting in no or partial data collection. As with previous years, as the program nears the end of the season the signs become less reliable due to lack of sunlight and the

Data Overview

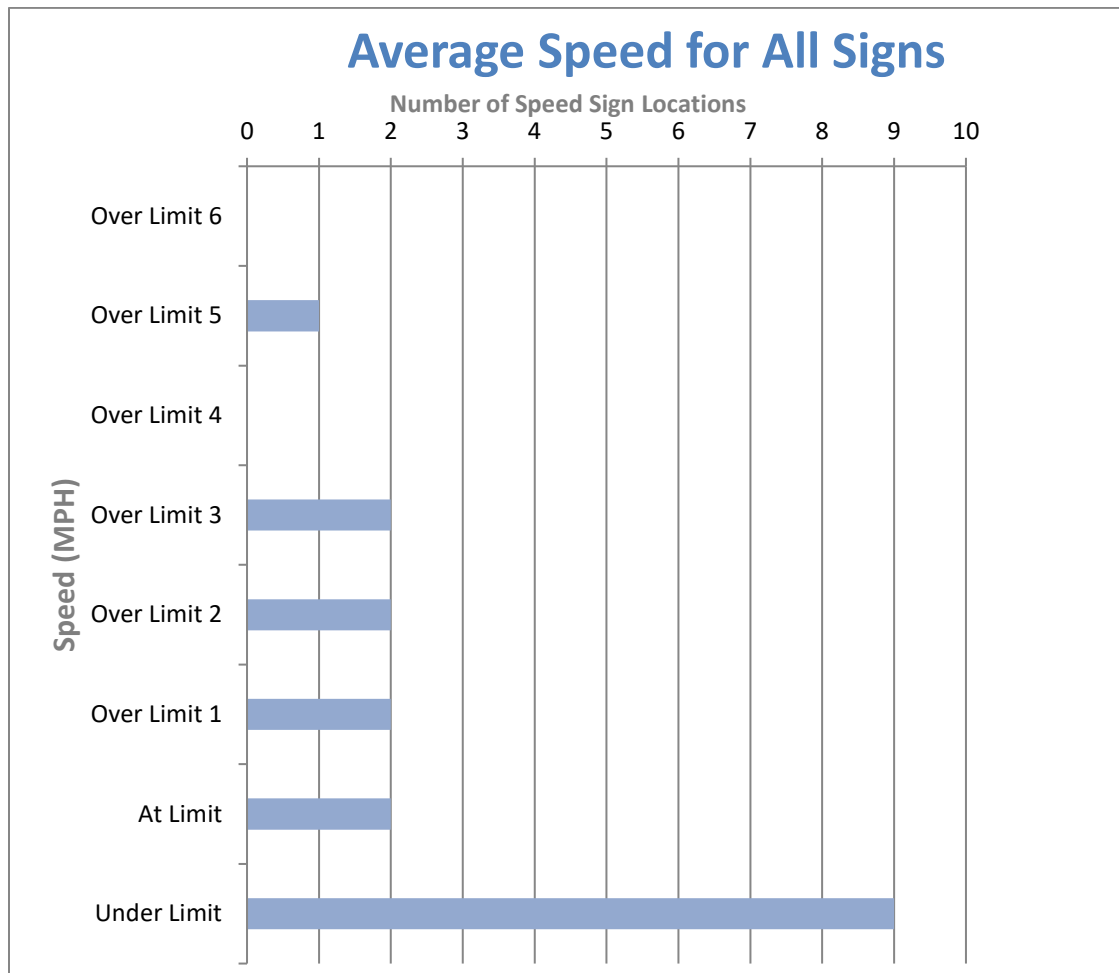
The following chart shows the 85th percentile speeds recorded from each sign and how many of those are under the limit, at the limit and above the limit from 1 to 10 mph over. The 85th percentile speed is the speed at or below which 85% of motorists drive on a given road unaffected by slower traffic or poor weather; this is the speed that most motorists on the road consider safe and reasonable under ideal conditions.

The following chart shows the most common 85th percentile* speeds were 5 and 6 mph over the posted speed limit followed second by speeds under the posted limit.



*The 85th percentile speed is the speed at or below which 85 percent of the motorists drive on a given road unaffected by slower traffic or poor weather. This speed indicated the speed that most motorists on the road consider safe and reasonable under ideal conditions. It is typically used as a guideline for the appropriate speed limit for that road.

The chart below describes the average speed recorded from each sign that was placed for 2015; the majority of the average speeds recorded by the signs were at or under the limit.



Recommendations for Mobile Speed Signs:

It is recommended that for future mobile speed sign use for neighborhoods:

- Do a wider call for input for locations; use Social Media outlets, NextDoor.com and neighborhood council websites and blogs. ONS and SPD receive many calls requesting these signs and feel that further reach regarding the program would be beneficial for those who can't make it to a meeting.
- Continue to encourage neighborhoods to place the signs in safe places where there is less likelihood of vandalism.

District One:

Chief Garry Park: Greene St. between Mission and Greene St. Bridge

The mobile speed sign was placed on Northbound Greene St. between Mission and the Greene St. bridge from April 23rd to May 9th. There were 236,119 vehicles tracked within the 16 day count period with 39% traveling at speeds above the speed limit. The average speed was 34.5 mph.



Speed Statistics	
Posted	35
Average Speed	34.5
85 th Percentile	38
# Vehicles Tracked	236,119
# Over Limit	91,804
% over the limit	38.88%
% of speeders 1-5 over limit	82.0%
% of speeders 5-10 over limit	14.9%
% of speeders 10-15 over limit	1.9%
% of speeders 15 or more over limit	1.2%

Chief Garry Park: Mission Ave. at Chief Gary Park between Regal and Cook

The mobile speed sign was placed near Chief Garry Park on Mission Ave. between Regal and Cook from July 27th to August 12th. 199,541 vehicles were tracked during the 16 day count period with 28% traveling at speeds above the speed limit. The average speed was observed to be less than 27 mph, 3mph below the posted speed; the 85th percentile speed was 33mph.



Speed Statistics	
Posted	30
Average Speed	26.8
85 th Percentile	33
# Vehicles Tracked	199,541
# Over Limit	40,013
% over the limit	28.24%
% of speeders 1-5 over limit	71.0%
% of speeders 5-10 over limit	24.0%
% of speeders 10-15 over limit	4.0%
% of speeders 15 or more over limit	1.0%

Chief Garry Park: Stevens School, Eastbound on Mission

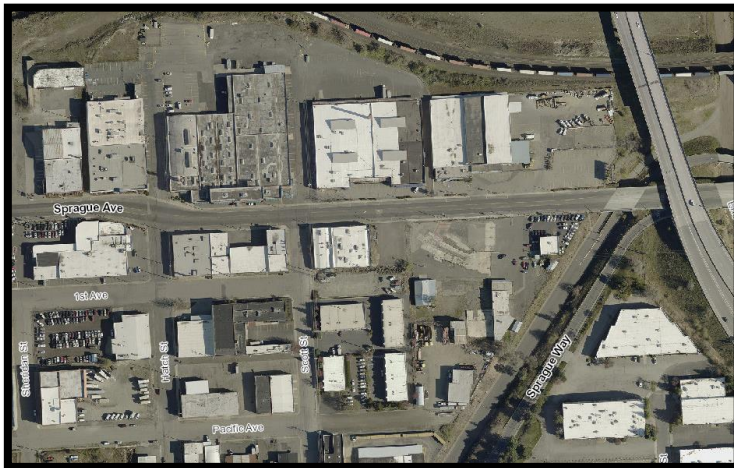
The mobile speed sign was placed on Mission near Stevens Elementary School from March 30th to April 29th facing eastbound traffic. There was a malfunction with the data collection with only a limited amount of data collected as indicated in the table below.



Speed Statistics	
Posted	25
Average Speed	20.1
85 th Percentile	26
# Vehicles Tracked	3,065
# Over Limit	502
% over the limit	16.37%
% of speeders 1-5 over limit	81.3%
% of speeders 5-10 over limit	16.3%
% of speeders 10-15 over limit	1.9%
% of speeders 15 or more over limit	0.5%

East Central Neighborhood: East Sprague Ave. East of Scott St.

The mobile sign was placed on Eastbound Sprague Ave. east of Scott St. from June 22nd to July 13th, during this time there was a total of 203,802 vehicles tracked with an average speed of 29.8mph.



Speed Statistics	
Posted	30
Average Speed	29.8
85 th Percentile	34
# Vehicles Tracked	203,802
# Over Limit	88,881
% over the limit	43.6%
% of speeders 1-5 over limit	83.5%
% of speeders 5-10 over limit	14.4%
% of speeders 10-15 over limit	1.4%
% of speeders 15 or more over limit	0.6%

District Two

Lincoln Heights Neighborhood: 29th at Perry St.

The mobile sign was placed on 29th Ave. near Perry St from March 31st to April 28th facing eastbound traffic. There were 222,770 cars tracked within this 30 day period with an average speed of 32.6 mph with 71.44% traveling over the posted speed limit of 30 mph. Of those traveling over the speed limit 50% were traveling in the 1-5mph over.



Speed Statistics	
Posted	30
Average Speed	32.6
85 th Percentile	36
# Vehicles Tracked	272,383
# Over Limit	194,594
% over the limit	71.44%
% of speeders 1-5 over limit	50.11%
% of speeders 5-10 over limit	18.27%
% of speeders 10-15 over limit	2.44%
% of speeders 15 or more over limit	.74%

Comstock: 31st Ave. between Tekoa St. & Alleyway

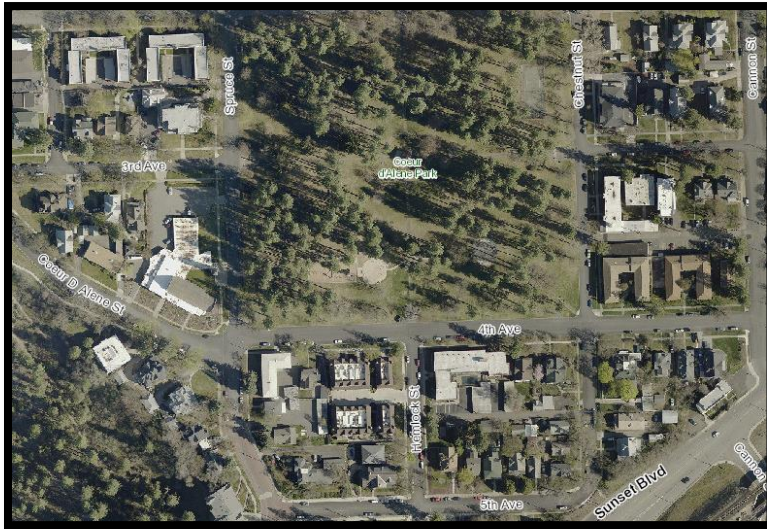
The mobile sign was placed on 31st Ave. between Tekoa St. & Alleyway from May 11th to May 26th facing eastbound traffic towards Sacajawea Middle School. There were 2,551 cars tracked within this 14 day period with 3.68% traveling over the posted speed limit of 25 mph.



Speed Statistics	
Posted	25
Average Speed	16.3
85 th Percentile	21
# Vehicles Tracked	2,551
# Over Limit	94
% over the limit	3.68%
% of speeders 1-5 over limit	79.78%
% of speeders 5-10 over limit	10.63%
% of speeders 10-15 over limit	2.12%
% of speeders 15 or more over limit	7.4%

Browne's Addition Neighborhood: Coeur d' Alene at Spruce and 4th Ave.

The mobile sign was placed Coeur d' Alene St. at Spruce and 4th from June 8th to June 22nd, during this time there was a total of 5,023 vehicles tracked with an average speed of 17.1 mph.



Speed Statistics	
Posted	25
Average Speed	17.1
85 th Percentile	20
# Vehicles Tracked	5,023
# Over Limit	95
% over the limit	1.89%
% of speeders 1-5 over limit	77.9%
% of speeders 5-10 over limit	8.4%
% of speeders 10-15 over limit	2.1%
% of speeders 15 or more over limit	11.6%

Browne's Addition Neighborhood: Pacific Ave near Oak St.

The mobile sign was placed on Westbound Pacific Ave. near Oak St. from May 27th to June 8th, during this time there was a total of 22,214 vehicles tracked with an average speed of 21.3 mph.



Speed Statistics	
Posted	25
Average Speed	21.3
85 th Percentile	25
# Vehicles Tracked	22,214
# Over Limit	3,133
% over the limit	14.1%
% of speeders 1-5 over limit	89.4%
% of speeders 5-10 over limit	8.4%
% of speeders 10-15 over limit	1.1%
% of speeders 15 or more over limit	1.1%

East Central Neighborhood: South Sherman Ave. South of I-90

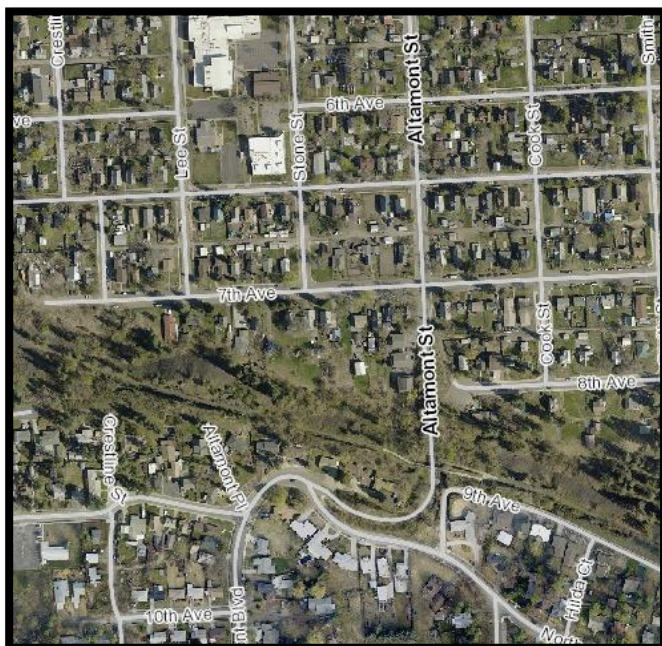
The mobile sign was placed on Southbound Sherman Ave. South of I-90 from August 24th to September 8th, during this time there was a total of 99,365 vehicles tracked with an average speed of 27.7 mph.



Speed Statistics	
Posted	30
Average Speed	27.7
85 th Percentile	32
# Vehicles Tracked	99,365
# Over Limit	24,634
% over the limit	24.8%
% of speeders 1-5 over limit	87.1%
% of speeders 5-10 over limit	10.8%
% of speeders 10-15 over limit	1.4%
% of speeders 15 or more over limit	0.7%

East Central Neighborhood: South Altamont North of Hill

The mobile sign was placed on Northbound Altamont north of the Altamont hill from August 24th to September 8th, during this time there was a total of 115,310 vehicles tracked with an average speed of 30.5 mph.



Speed Statistics	
Posted	30
Average Speed	30.5
85 th Percentile	36
# Vehicles Tracked	115,310
# Over Limit	61,840
% over the limit	53.6%
% of speeders 1-5 over limit	69.4%
% of speeders 5-10 over limit	25.2%
% of speeders 10-15 over limit	4.7%
% of speeders 15 or more over limit	0.7%

Cliff-Cannon Neighborhood: Maple Blvd. near 17th Ave.

The mobile sign was placed on Maple Blvd. near 17th Ave. from July 13th to July 27th, during this time there was a total of 5,009 vehicles tracked with an average speed of 21.3 mph.



Speed Statistics	
Posted	25
Average Speed	21.3
85 th Percentile	26
# Vehicles Tracked	5,009
# Over Limit	1,013
% over the limit	20.2%
% of speeders 1-5 over limit	85.0%
% of speeders 5-10 over limit	12.7%
% of speeders 10-15 over limit	1.8%
% of speeders 15 or more over limit	0.5%

Cliff-Cannon Neighborhood: Cedar St. near 14th

The mobile sign was placed on Cedar St. near 14th Ave. from July 27th to August 10th, during this time there was a total of 134,312 vehicles tracked with an average speed of 33.3 mph and an 85th percentile speed of 38 mph. Of the over speed limit vehicles 31.5% were traveling at 5-10mph over the speed limit and 8.3% were traveling 10-15mph over the speed limit.

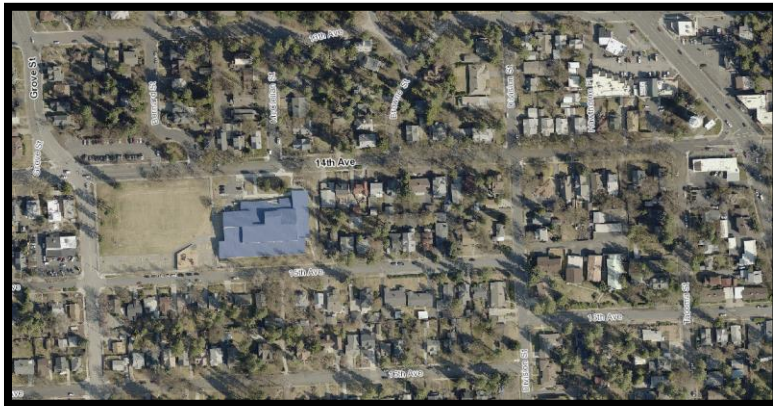


Speed Statistics	
Posted	30
Average Speed	33.3
85 th Percentile	38
# Vehicles Tracked	134,312
# Over Limit	101,249
% over the limit	75.4%
% of speeders 1-5 over limit	58.5%
% of speeders 5-10 over limit	31.5%
% of speeders 10-15 over limit	8.3%
% of speeders 15 or more over limit	1.7%

Cliff/Canon Neighborhood: 14th Ave. between Grand and Bernard near Roosevelt Elementary

The mobile sign was placed on 14th Ave. from September 8th to September 22nd, during this time there was a total of 35,738 vehicles tracked with an average speed of 22.5 mph. Note, this sign was placed near the 20mph school speed zone area near Roosevelt Elementary so the data is likely skewed by with the lower travel speeds that occur when the school speed zone is in effect.

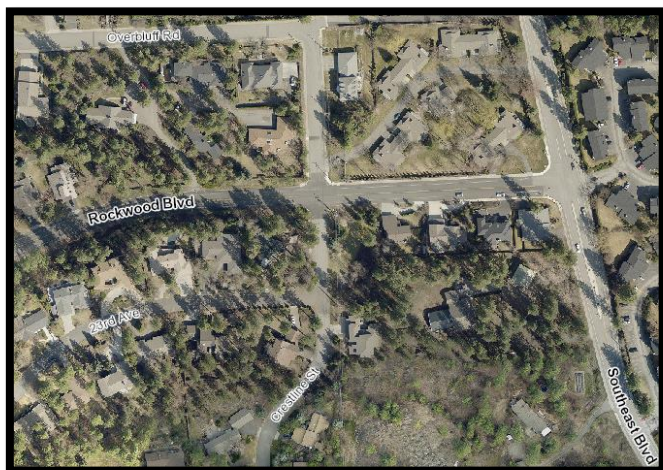
Speed Statistics	
Posted	30
Average Speed	22.5
85 th Percentile	27
# Vehicles Tracked	35,738
# Over Limit	1,645
% over the limit	4.6%
% of speeders 1-5 over limit	84.5%
% of speeders 5-10 over limit	10.0%
% of speeders 10-15 over limit	2.7%
% of speeders 15 or more over limit	2.8%



Rockwood Neighborhood: Rockwood Blvd East of Crestline Street

The mobile speed sign was placed on Eastbound Rockwood Blvd east of Crestline St. from August 12 until August 24th. During this time there was a total of 29,068 vehicles tracked with an average speed of 29.9 mph and an 85th percentile speed of 35 mph. 84% of vehicles were traveling over the speed limit.

Speed Statistics	
Posted	25
Average Speed	29.9
85 th Percentile	35
# Vehicles Tracked	29,068
# Over Limit	24,470



% over the limit	84.18%
% of speeders 1-5 over limit	46.7%
% of speeders 5-10 over limit	39.9%
% of speeders 10-15 over limit	11.7%
% of speeders 15 or more over limit	1.7%

District Three:

Balboa/SIT Neighborhood: Woodside Ave. & Bruce St.

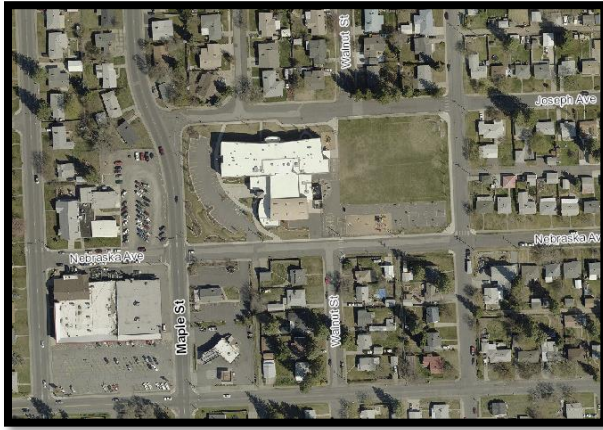
The mobile speed sign was placed at Woodside Ave. and Bruce St. facing westbound traffic from March 30th to April 14th. There were 38,844 cars tracked in this location of those 66.41% were traveling over the posted speed limit of 25mph and the average speed was 26.8 mph just over the limit.



Speed Statistics	
Posted	25
Average Speed	26.8
85 th Percentile	30
# Vehicles Tracked	38,844
# Over Limit	25,798
% over the limit	66.41%
% of speeders 1-5 over limit	80.7%
% of speeders 5-10 over limit	17.1%
% of speeders 10-15 over limit	1.5%
% of speeders 15 or more over limit	.70%

North Hill Neighborhood: Maple St. on the traffic island at Joseph

The mobile speed sign was placed on Maple St. on that traffic island at Joseph in front of Ridgeview Elementary to capture vehicles traveling northbound on Maple St. The total number of vehicles tracked in the period between May 21st and June 4th was 180,647 with an average speed of 30.9 mph and 85th percentile speed of 35 mph.



Speed Statistics	
Posted	30
Average Speed	30.9
85 th Percentile	35
# Vehicles Tracked	180,647
# Over Limit	105,657
% over the limit	58.48%
% of speeders 1-5 over limit	75.8%
% of speeders 5-10 over limit	20.85%
% of speeders 10-15 over limit	2.65%
% of speeders 15 or more over limit	.7%

Northwest Neighborhood: Alberta St. between Liberty and Dalton

The mobile speed sign was placed on Southbound Alberta St. between Liberty and Dalton Avenues, approximately 2 to 3 blocks north of Northwest Blvd. The total number of vehicles tracked in the period between June 8th and June 22nd was 272,684 vehicles with an average speed of 32.3 and 85th percentile speed of 36 mph.



Speed Statistics	
Posted	30
Average Speed	32.3
85 th Percentile	36
# Vehicles Tracked	272,684
# Over Limit	189,353
% over the limit	69.44%
% of speeders 1-5 over limit	69.6%
% of speeders 5-10 over limit	26.8%
% of speeders 10-15 over limit	3.1%
% of speeders 15 or more over limit	0.6%

North Hill Neighborhood: Maple St near Longfellow

The mobile speed sign was placed on Northbound Maple St. near Longfellow Alberta St. from May 9th to May 21st. The total number of vehicles tracked was 149,578 vehicles with an average speed of 30.9 mph and an 85th percentile speed of 35 mph.



Speed Statistics	
Posted	30
Average Speed	30.2
85 th Percentile	35
# Vehicles Tracked	149,578
# Over Limit	76,988
% over the limit	51.5%
% of speeders 1-5 over limit	77.7%
% of speeders 5-10 over limit	18.7%
% of speeders 10-15 over limit	2.7%
% of speeders 15 or more over limit	0.9%