

Office of Neighborhood Services

Mobile Speed Feedback Report

Jackie Caro
12/23/2014

2014 Mobile Speed Feedback Report

Executive Summary

This report includes speed feedback data from each of the sign locations from 2014. The analysis includes:

- Location information and map
- Length of time sign was in location
- Number of vehicles tracked by speed sign while in location
- Percentage and number of vehicles traveling over the posted speed limit
- Breakdown of the percentage of speeders going 1-5mph, 5-10mph, 10-15mph and 15 or more over the posted speed limit.
- Average speed limit of traffic that were tracked by the mobile speed sign

Overview of 2014 Mobile Speed Feedback Program:

The program offers six mobile speed feedback signs to be evenly (as possible) placed in each neighborhood for a two week period. The locations were chosen based on the perceived problem of speeding by the neighborhoods.

Throughout the time that the signs were placed in the neighborhoods for 2014 there has been less experience with vandalism then in the past years. This may be due to the request that neighborhoods have the signs placed only in areas where they are visible to the public or close to neighbors who can keep an eye on the sign.

SD card errors have continued to be a problem; some did not pick up any data at all and others only received data for one or two days or few hours. It is also seen as the program nears the end of the season the signs become less reliable due to lack of sunlight and the batteries diminishing charge.

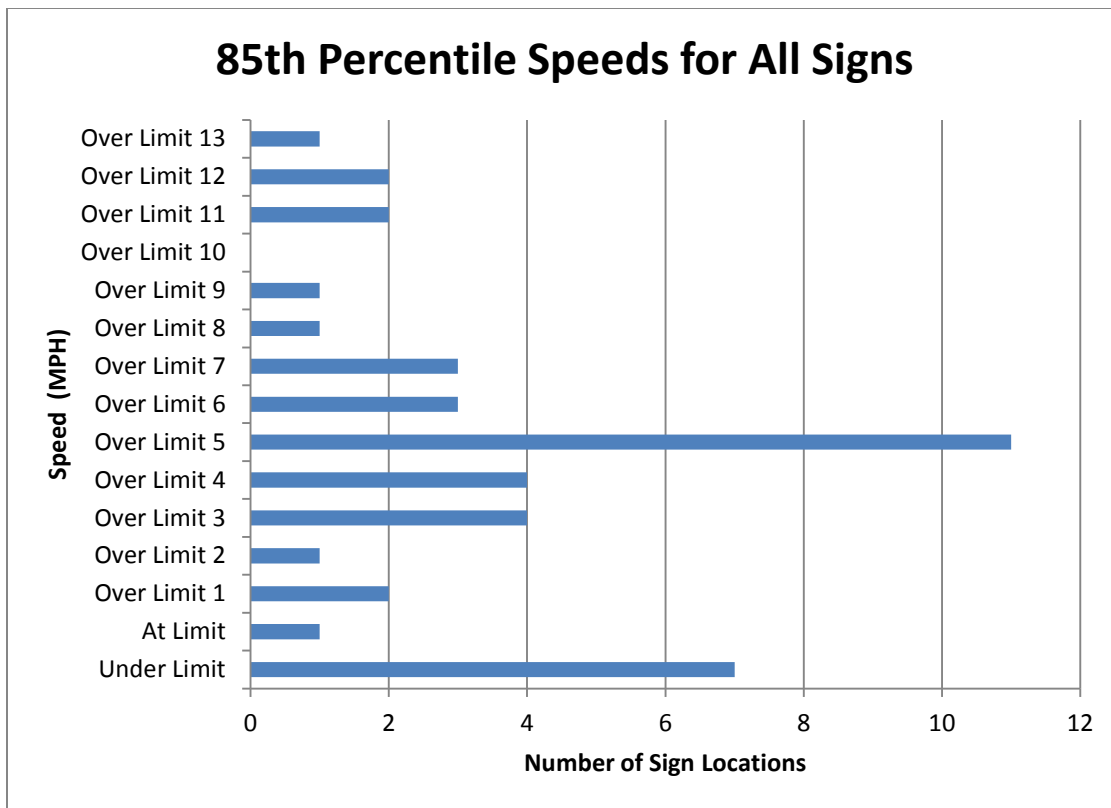
Conclusion

Final analysis shows that the Mobile Speed Feedback Signs seem to have an impact on the behavior of drivers in most areas that they are placed. Granted it is important to remember that this is an assumption due to the lack of previous speed recordings without the signs. It is possible to assume that if the average speed is close to the posted speed the mobile speed sign may be having an effect on behavior. If the average speed is still much higher than the posted speed than the speed sign may not be having the desired effect.

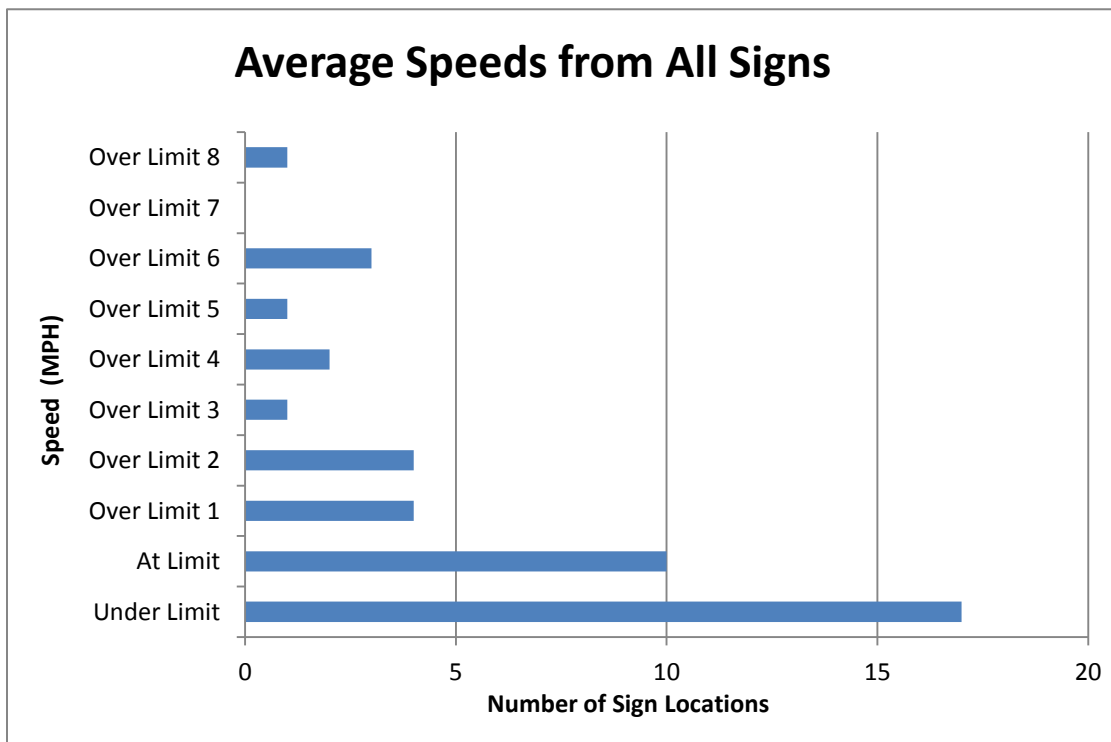
The following chart shows the 85th percentile speeds recorded from each sign and how many of those are under the limit, at the limit and above the limit from 1 to 11mph over. The 85th percentile speed is the speed at or below which 85% of motorists drive on a given road unaffected by slower traffic or poor weather; this is the speed that most motorists on the road consider safe and reasonable under ideal conditions.

The following chart shows the most common 85th percentile* speed was 5 mph over the posted speed limit followed second by speeds under the posted limit.

*The 85th percentile speed is the speed at or below which 85 percent of the motorists drive on a given road unaffected by slower traffic or poor weather. This speed indicated the speed that most motorists on the road consider safe and reasonable under ideal conditions. It is typically used as a guideline for the appropriate speed limit for that road.



The chart below describes the average speed recorded from each sign that was placed for 2014; the majority of the average speeds recorded by the signs were at or under the limit. The average speed is the speed at which 50% of the traffic is going. The average speed of traffic was at or below the posted speed limit which is the opposite of the 85th Percentile which showed the largest number of locations where vehicles were traveling over the posted limit by 5mph.



Recommendations for 2015 Mobile Speed Signs:

It is recommended that for the 2015 mobile speed sign schedule for neighborhoods:

- Do a wider call for input for locations; use Social Media outlets, NextDoor.com and neighborhood council websites and blogs. ONS and SPD receive many calls requesting these signs and feel that further reach regarding the program would be beneficial for those who can't make it to a meeting.
- Continue to encourage neighborhoods to place the signs in safe places where there is less likelihood of vandalism.

District One:

Logan Neighborhood: Dakota St.

The mobile speed sign was placed on Dakota St. on the SW corner at Cleveland Ave. to track vehicles traveling southbound from March 31st to April 14th. The sign tracked 3,065 vehicles the average speed was 20.09mph which is lower than the posted 25mph with only 16.37% of vehicles were traveling over the posted speed limit.



Speed Statistics	
Posted	25
Average Speed	20.09
85 th Percentile	26
# Vehicles Tracked	3,065
# Over Limit	502
% over the limit	16.37%
% of speeders 1-5 over limit	81.3%
% of speeders 5-10 over limit	16.3%
% of speeders 10-15 over limit	1.9%
% of speeders 15 or more over limit	.5%

Chief Garry Park Neighborhood: Mission Ave.

The mobile speed sign was placed on Mission Ave. between Madelia St. & Magnolia St. by Stevens Elementary from March 31st to April 14th tracking eastbound traffic. This location is challenging for the speed sign because the speed is “20mph when children are present” otherwise the posted limit is 30mph. There were 84,425 vehicles tracked with 49.94% of vehicles traveling over 30mph.



Speed Statistics	
Posted	30
Average Speed	30.27
85 th Percentile	35
# Vehicles Tracked	84,425
# Over Limit	42,182
% over the limit	49.94%
% of speeders 1-5 over limit	75.4%
% of speeders 5-10 over limit	21.6%
% of speeders 10-15 over limit	2.6%
% of speeders 15 or more over limit	.4%

Logan Neighborhood: Dakota St.

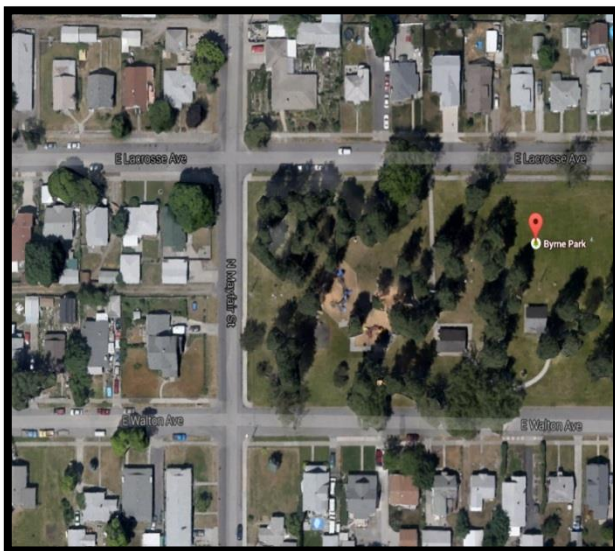
The mobile speed sign was placed on 2900 Block of Dakota St. tracking northbound traffic from April 14th-April 30th. During this time the sign tracked 13,186 vehicles with an average speed of 19.95mph which is about 5mph below the posted speed limit.



Speed Statistics	
Posted	20
Average Speed	19.95
85 th Percentile	25
# Vehicles Tracked	13,186
# Over Limit	1,856
% over the limit	14.07%
% of speeders 1-5 over limit	81.1 %
% of speeders 5-10 over limit	15.7%
% of speeders 10-15 over limit	2.4%
% of speeders 15 or more over limit	.80%

Nevada Lidgerwood Neighborhood: Mayfair St.

The mobile speed sign was placed by Byrne Park on Mayfair St. to track southbound traffic from April 14th to April 30th. There was very low traffic in this area only 9,688 vehicles were tracked in the two weeks the sign was place, with an average of speed of 18.2mph which is lower than the posted speed limit of 25mph.



Speed Statistics	
Posted	25
Average Speed	18.2
85 th Percentile	22
# Vehicles Tracked	9,688
# Over Limit	353
% over the limit	3.64%
% of speeders 1-5 over limit	91.5%
% of speeders 5-10 over limit	7.9%
% of speeders 10-15 over limit	.6%
% of speeders 15 or more over limit	0%

Nevada Lidgerwood Neighborhood: Morton St.

The mobile speed sign was placed on Morton St. at 1205 E. Crown Ave. to track northbound traffic from May 29th to June 9th. There were 10,000 vehicles tracked within the period the sign was placed. The average speed was 18.53mph which is much lower than the posted speed limit of 25 mph.



Speed Statistics	
Posted	25
Average Speed	18.53
85 th Percentile	23
# Vehicles Tracked	10,000
# Over Limit	517
% over the limit	5.17%
% of speeders 1-5 over limit	79.9%
% of speeders 5-10 over limit	11%
% of speeders 10-15 over limit	4.6%
% of speeders 15 or more over limit	4.5%

Logan Neighborhood: Dakota St.

The mobile speed sign was placed on Nevada St. near Cleveland Ave. from June 9th to June 23rd, during this time the sign tracked 200,539 vehicles. The posted speed limit is 30 mph and the average speed was 30.72mph, of those speeding the majority (74%) were within 5mph of the posted speed limit.



Speed Statistics	
Posted	30
Average Speed	30.72
85 th Percentile	35
# Vehicles Tracked	200,539
# Over Limit	81,782
% over the limit	54.63%
% of speeders 1-5 over limit	74.6%
% of speeders 5-10 over limit	21.9%
% of speeders 10-15 over limit	2.9%
% of speeders 15 or more over limit	.6%

Nevada Lidgerwood Neighborhood: Standard St.

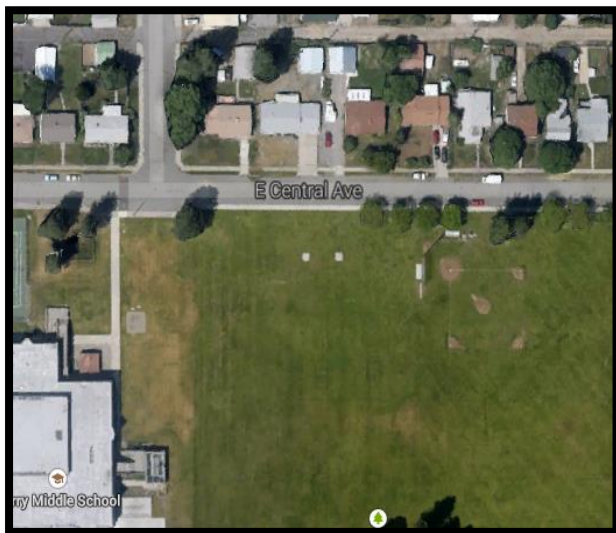
The mobile speed sign was placed on Standard St. between Liberty and Dalton Ave. to track northbound traffic from June 23rd to July 7th. There were 6,940 vehicles tracked within the period the sign was placed. The average speed was 22.83mph which is lower than the posted speed limit of 25mph.



Speed Statistics	
Posted	25
Average Speed	22.83
85 th Percentile	27
# Vehicles Tracked	6,910
# Over Limit	1,745
% over the limit	25.25%
% of speeders 1-5 over limit	88.4%
% of speeders 5-10 over limit	10.3%
% of speeders 10-15 over limit	1.13%
% of speeders 15 or more over limit	.17%

Nevada Lidgerwood Neighborhood: 907 E. Central Ave.

The mobile speed sign was placed at 907 E. Central Ave. to track westbound traffic from July 21st to August 4th. There were 17,332 vehicles tracked within the period the sign was placed, this is a fairly high volume for a residential street, this is likely due to parents and buses coming to pick up and drop off students at the school. The average speed was 18.33mph which is much lower than the posted speed limit of 25 mph and only 8.37% of the vehicles tracked were going over the speed limit.



Speed Statistics	
Posted	25
Average Speed	18.33
85 th Percentile	23
# Vehicles Tracked	17,332
# Over Limit	1451
% over the limit	8.37%
% of speeders 1-5 over limit	79.27%
% of speeders 5-10 over limit	12.75%
% of speeders 10-15 over limit	2.89%
% of speeders 15 or more over limit	5.09%

Hillyard Neighborhood: Haven St.

The mobile speed sign was placed on Haven St. at Nebraska Ave. on the gravel triangle to track southbound traffic from July 21st to August 4th. There were 73,865 vehicles tracked within the period the sign was placed. The average speed was 29.56mph, slightly lower than the posted speed limit of 30mph.



Speed Statistics	
Posted	30
Average Speed	29.56
85 th Percentile	33
# Vehicles Tracked	73,865
# Over Limit	26,919
% over the limit	36.44%
% of speeders 1-5 over limit	88.93%
% of speeders 5-10 over limit	9.5%
% of speeders 10-15 over limit	.83%
% of speeders 15 or more over limit	.74%

Hillyard Neighborhood: Market St.

The mobile speed sign was placed on Market St. near Glass to track northbound traffic from August 5th to September 18th. There were 92,081 vehicles tracked within the period the sign was placed. The average speed was 34.02mph, slightly lower than the posted speed limit of 35mph. Of those speeding almost all were traveling 1-5mph over the posted speed limit.



Speed Statistics	
Posted	35
Average Speed	34.02
85 th Percentile	38
# Vehicles Tracked	92,081
# Over Limit	30,981
% over the limit	33.64%
% of speeders 1-5 over limit	99.6%
% of speeders 5-10 over limit	.36%
% of speeders 10-15 over limit	.06 %
% of speeders 15 or more over limit	.13 %

Bemiss Neighborhood: Empire Ave.

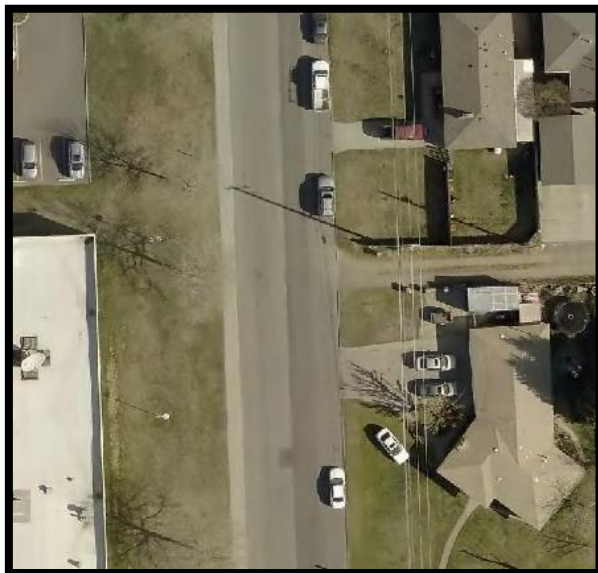
The mobile speed sign was placed on Empire Ave. near Cook St. to capture westbound traffic between September 2nd and September 15th. There were 98,219 vehicles tracked with 95% traveling over the posted speed limit of “20mph while children are present”. Due to the varying posted speed limit, the data is skewed a bit because when no children are present the speed is 30mph.



Speed Statistics	
Posted	20
Average Speed	28.52
85 th Percentile	32
# Vehicles Tracked	98,219
# Over Limit	93,603
% over the limit	95.3%
% of speeders 1-5 over limit	74.6%
% of speeders 5-10 over limit	21.9%
% of speeders 10-15 over limit	2.9%
% of speeders 15 or more over limit	.6%

Bemiss Neighborhood: Regal St.

The mobile speed sign was placed on Regal St. near Rich Ave. by Spokane Skills Center to capture northbound traffic between September 15th and September 29th. There were 42,748 vehicles tracked with 54.47% traveling over the posted speed limit of 20mph while children are present, this will skew the data a little due to it not being 20mph all the time. When there are no children present the speed is 30mph.



Speed Statistics	
Posted	20
Average Speed	21.01
85 th Percentile	26
# Vehicles Tracked	42,748
# Over Limit	23,285
% over the limit	54.47%
% of speeders 1-5 over limit	68.2%
% of speeders 5-10 over limit	26.7%
% of speeders 10-15 over limit	3.5%
% of speeders 15 or more over limit	1.6%

Nevada Lidgerwood Neighborhood: 8411 N. Colton

The speed sign was placed near 8411 N. Colton from September 29th to October 13th to capture vehicles traveling northbound. This is a residential street with a posted speed of 25mph, during the time the sign was placed there were 14,495 vehicles tracked, this is extremely high for a residential street; the average speed was 22.42mph which is lower than the posted 25mph.



Speed Statistics	
Posted	25
Average Speed	22.72
85 th Percentile	29
# Vehicles Tracked	14,495
# Over Limit	5,162
% over the limit	35.61%
% of speeders 1-5 over limit	93.45%
% of speeders 5-10 over limit	6.24%
% of speeders 10-15 over limit	.17%
% of speeders 15 or more over limit	.14%

District Two

Browne's Addition Neighborhood: Pacific Ave.

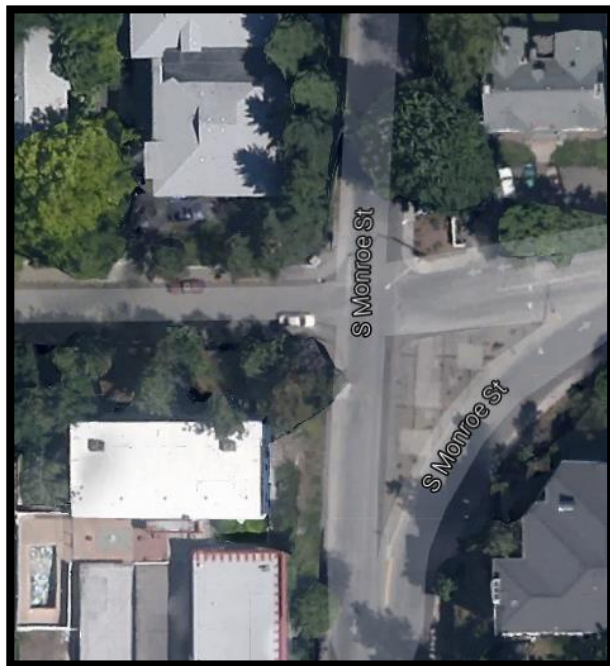
The mobile sign was placed on Pacific Ave. entering the Browne's Addition neighborhood from March 31st to April 14th; unfortunately the sign did not save any data that was collected.

Rockwood Neighborhood: 1121 E. Rockwood Blvd

The mobile sign was placed at 1121 E. Rockwood Blvd from April 14th to April 28th; unfortunately the sign did not save any data that was collected.

Cliff/Cannon Neighborhood: Monroe St..

The mobile speed sign was placed on Monroe St. near 7th Ave. on the asphalt island tracking southbound traffic from April 14th to April 28th. There were 72,421 vehicles tracked with only 15.26% traveling over the posted speed limit of 30mph.



Speed Statistics	
Posted	30
Average Speed	25.94
85 th Percentile	31
# Vehicles Tracked	72,421
# Over Limit	11,054
% over the limit	15.26%
% of speeders 1-5 over limit	88.2%
% of speeders 5-10 over limit	10.4%
% of speeders 10-15 over limit	1.2%
% of speeders 15 or more over limit	.2%

Manito/Cannon Hill Neighborhood: Lincoln St.

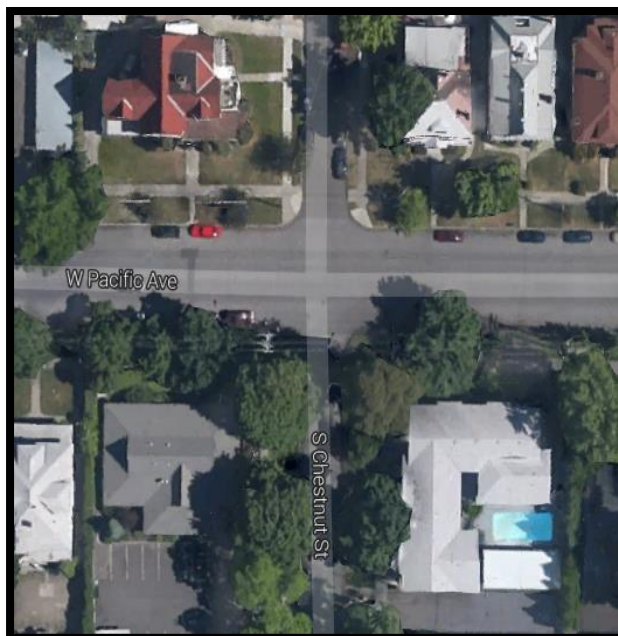
The mobile speed sign was placed at 18th Ave. and Lincoln St. on the traffic island to track southbound traffic approaching the park area from April 28th to May 12th. There were 64,802 vehicles tracked in the time period the sign was placed, the average speed was 26.67mph just over the 25mph posted speed limit but the 85th percentile was at 30mph.



Speed Statistics	
Posted	25
Average Speed	26.67
85 th Percentile	30
# Vehicles Tracked	64,802
# Over Limit	43,672
% over the limit	67.39%
% of speeders 1-5 over limit	78.8%
% of speeders 5-10 over limit	19.6%
% of speeders 10-15 over limit	1.2%
% of speeders 15 or more over limit	.4%

Browne's Addition Neighborhood: 2100 W. Pacific Ave.

The mobile sign was placed at 2100 W Pacific Ave. from May 12th to May 22nd to capture westbound traffic into the neighborhood. Unfortunately the sign only tracked vehicles on one day May 20th for 30 minutes. This greatly affects the outcome of the data.



Speed Statistics	
Posted	25
Average Speed	19.05
85 th Percentile	24
# Vehicles Tracked	35
# Over Limit	3
% over the limit	8.57%
% of speeders 1-5 over limit	66.6
% of speeders 5-10 over limit	0%
% of speeders 10-15 over limit	33.3%
% of speeders 15 or more over limit	.2%

Cliff/Cannon Neighborhood: Monroe St.

The mobile sign was placed on Monroe St. at 12th Ave. on the traffic island from May 12th to May 29th tracking northbound traffic. There were 134,438 vehicles tracked during the two week period with an average speed at 29.61mph which is just below the posted limit of 30mph, but the 85th percentile was 5mph over the limit.



Speed Statistics	
Posted	30
Average Speed	29.61
85 th Percentile	35
# Vehicles Tracked	134,438
# Over Limit	59,471
% over the limit	44.23%
% of speeders 1-5 over limit	73.72%
% of speeders 5-10 over limit	22.61%
% of speeders 10-15 over limit	2.95%
% of speeders 15 or more over limit	.72%

Grandview/Thorpe Neighborhood: D St.

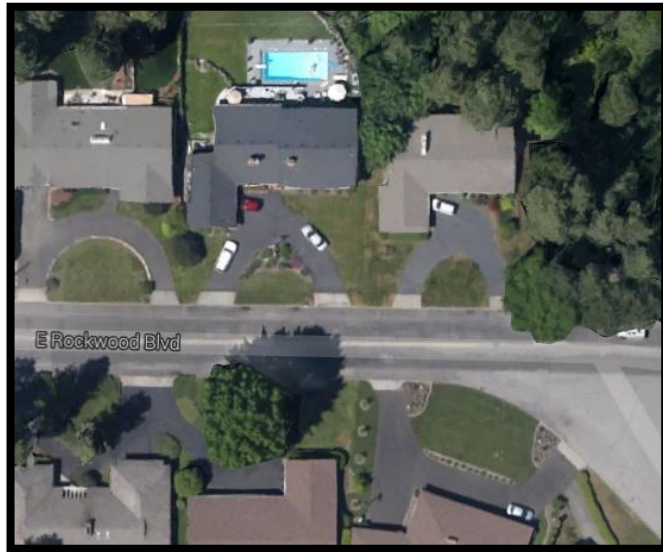
The mobile speed sign was placed on D. St. from May 29th to June 9th by Grandview Park tracking northbound traffic. There were 9,359 vehicles tracked during the time the sign was placed with an average speed of 24.06 mph with an 85th percentile 8mph over the 20mph limit.



Speed Statistics	
Posted	20
Average Speed	24.06
85 th Percentile	28
# Vehicles Tracked	9,359
# Over Limit	7,860
% over the limit	83.98%
% of speeders 1-5 over limit	59.4%
% of speeders 5-10 over limit	35%
% of speeders 10-15 over limit	4.68%
% of speeders 15 or more over limit	.92%

Rockwood Neighborhood: 1515 E. Rockwood

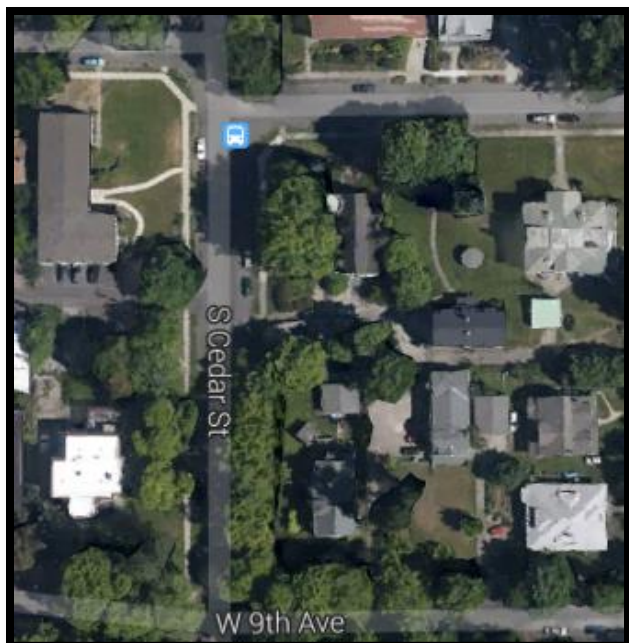
The mobile speed sign was placed at 1515 E. Rockwood Blvd to capture westbound traffic from May 29th to June 9th. The sign tracked 39,733 vehicles in the time it was placed which picked up an average speed of 27.06mph which is just over the posted 25mph. The 85th percentile however was traveling 7 over the posted limit.



Speed Statistics	
Posted	25
Average Speed	27.06
85 th Percentile	32
# Vehicles Tracked	39,733
# Over Limit	25,825
% over the limit	64.99%
% of speeders 1-5 over limit	59.8%
% of speeders 5-10 over limit	32%
% of speeders 10-15 over limit	6.9%
% of speeders 15 or more over limit	1.3%

Cliff/Cannon Neighborhood: Cedar St. between 8th & 9th

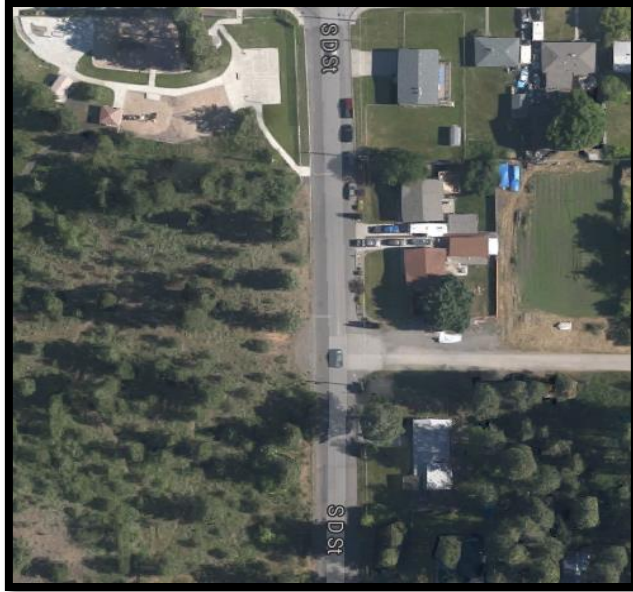
The mobile speed sign was placed on Cedar St. between 8th & 9th Ave. from June 9th to June 23rd. There were 36,963 vehicles tracked within the two week period the sign was placed with an average speed below the posted speed limit of 30mph.



Speed Statistics	
Posted	30
Average Speed	24.26
85 th Percentile	30
# Vehicles Tracked	36,963
# Over Limit	17,105
% over the limit	14.21%
% of speeders 1-5 over limit	86.14%
% of speeders 5-10 over limit	11.89%
% of speeders 10-15 over limit	1.52%
% of speeders 15 or more over limit	.45%

Grandview/Thorpe Neighborhood: D St. near 18th Ave.

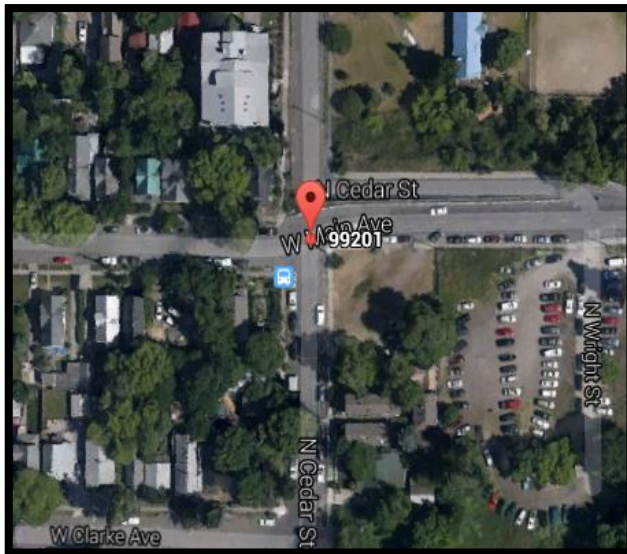
The mobile speed sign was placed on D St. near 18th Ave. from June 9th to June 23rd next to Grandview Park where the posted speed limit is 20mph. There were 10,407 vehicles tracked within the two week period the average speed was above the posted speed limit at 24.16mph, the 85th percentile was 29mph.



Speed Statistics	
Posted	20
Average Speed	24.16
85 th Percentile	29
# Vehicles Tracked	10,407
# Over Limit	8,431
% over the limit	81.01%
% of speeders 1-5 over limit	49.7%
% of speeders 5-10 over limit	40.1%
% of speeders 10-15 over limit	9%
% of speeders 15 or more over limit	1.2%

Peaceful Valley Neighborhood: Main Ave. at Cedar St.

The mobile speed sign was placed on Main Ave. at Cedar St. to capture westbound traffic from June 23rd to July 7th. There were 46,687 vehicles tracked in this location of those 45.51% were traveling over the posted speed limit of 25mph, 23% of those were traveling 5-10mph over the speed limit.



Speed Statistics	
Posted	25
Average Speed	24.51
85 th Percentile	30
# Vehicles Tracked	46,687
# Over Limit	21,250
% over the limit	45.51%
% of speeders 1-5 over limit	72%
% of speeders 5-10 over limit	23.78%
% of speeders 10-15 over limit	3.5%
% of speeders 15 or more over limit	.72%

East Central Neighborhood: 5th Ave. near Stone St.

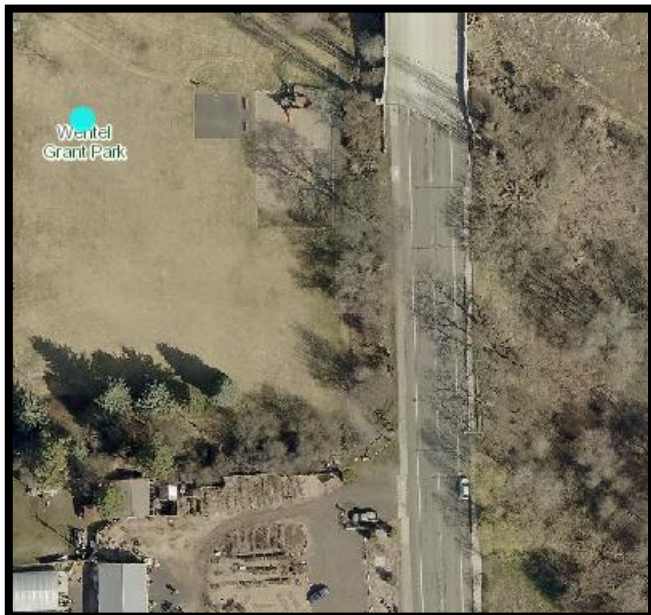
The mobile speed sign was placed on at 5th Ave. near Stone St. by the East Central Community Center to capture westbound traffic from July 7th to July 21st. There were 10,454 vehicles tracked in this location, the average speed was 21.28mph which is below the posted limit of 25mph on 5th Avenue.



Speed Statistics	
Posted	25
Average Speed	21.28
85 th Percentile	26
# Vehicles Tracked	10,454
# Over Limit	1716
% over the limit	16.41%
% of speeders 1-5 over limit	90.96%
% of speeders 5-10 over limit	8.04%
% of speeders 10-15 over limit	.58%
% of speeders 15 or more over limit	.42%

Latah/Hangman Neighborhood: S. Inland Empire Way

The mobile speed sign was placed on S. Inland Empire Way near Wentel Grant Park to capture southbound traffic from July 21st to August 4th. There were 33,626 vehicles tracked in this location with an average speed of 35.05 which is slightly over the posted 35mph. Of the vehicles traveling over the speed limit 26.1% were traveling 15 or more over the posted limit in this area.



Speed Statistics	
Posted	35
Average Speed	35.05
85 th Percentile	40
# Vehicles Tracked	33,626
# Over Limit	15,127
% over the limit	44.98%
% of speeders 1-5 over limit	37.2%
% of speeders 5-10 over limit	26.1%
% of speeders 10-15 over limit	16.4%
% of speeders 15 or more over limit	20.3%

Southgate Neighborhood: 44th Ave.

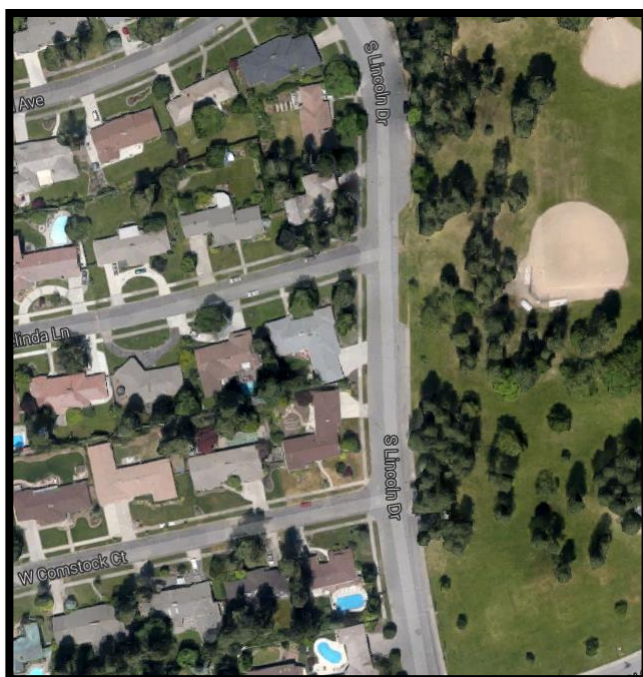
The mobile speed sign was placed on 44th Avenue near the Shopko facing westbound traffic from August 18th to September 2nd. There were 35,149 vehicles tracked in this location which is a very high volume for a residential street. The average speed limit was just over the 25mph posted speed at 25.36mph and the 85th percentile was 30mph.



Speed Statistics	
Posted	25
Average Speed	25.36
85 th Percentile	30
# Vehicles Tracked	35,149
# Over Limit	18,197
% over the limit	51.77%
% of speeders 1-5 over limit	77.6%
% of speeders 5-10 over limit	19.1%
% of speeders 10-15 over limit	2.6%
% of speeders 15 or more over limit	.62%

Comstock Neighborhood: On Lincoln Dr. between Melinda Ln. & Comstock Crt.

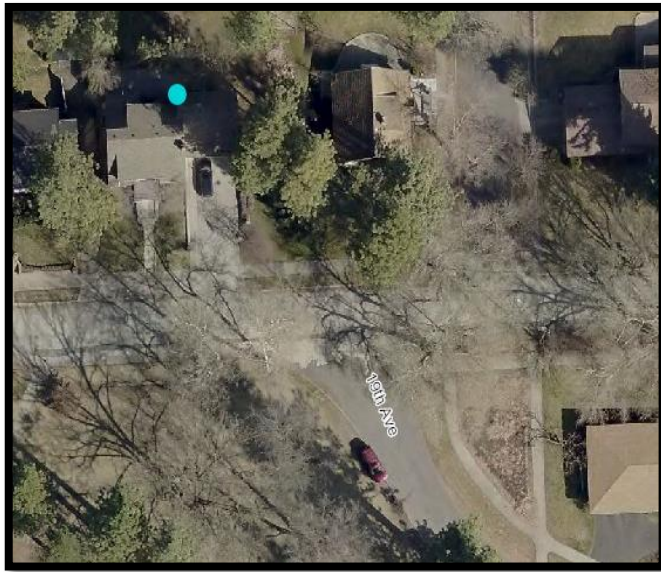
The mobile speed sign was placed on Lincoln between Melinda Ln. and Comstock Crt. to capture southbound traffic from August 18th to September 2nd. There were 12,517 vehicles tracked in this location of those 50.76% were traveling over the posted speed limit of 20mph. The number of vehicles may have been skewed due to the Symphony in the Park on Labor Day.



Speed Statistics	
Posted	20
Average Speed	20.36
85 th Percentile	25
# Vehicles Tracked	12,517
# Over Limit	6,354
% over the limit	50.76%
% of speeders 1-5 over limit	77.6%
% of speeders 5-10 over limit	19.7%
% of speeders 10-15 over limit	2.0%
% of speeders 15 or more over limit	.59%

Manito/Cannon Hill Neighborhood: Cedar St. between 8th & 9th

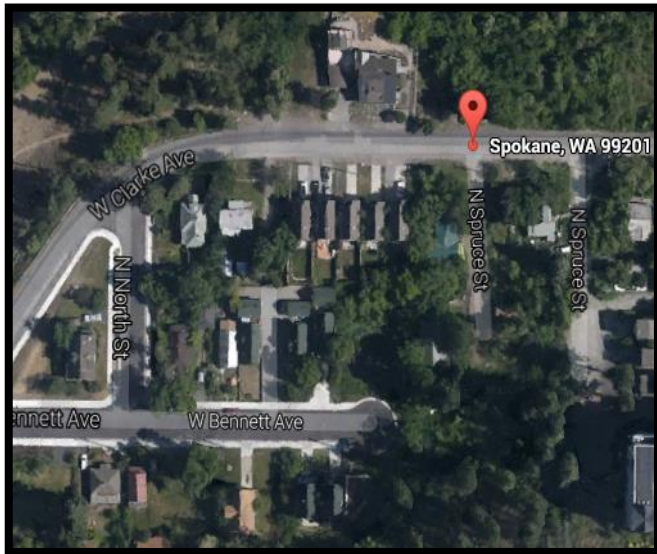
The mobile speed sign was placed between 714 and 704 W. 18th at Cannon Hill Park from August 18th to September 2nd. During the time the sign was placed there were 9,783 vehicles tracked with an average speed of 18.95mph which is below the posted speed limit of 20mph.



Speed Statistics	
Posted	20
Average Speed	18.95
85 th Percentile	23
# Vehicles Tracked	9,783
# Over Limit	3,276
% over the limit	33.48%
% of speeders 1-5 over limit	85.7%
% of speeders 5-10 over limit	13.1%
% of speeders 10-15 over limit	1%
% of speeders 15 or more over limit	.2%

Peaceful Valley Neighborhood: Cedar St. between 8th & 9th

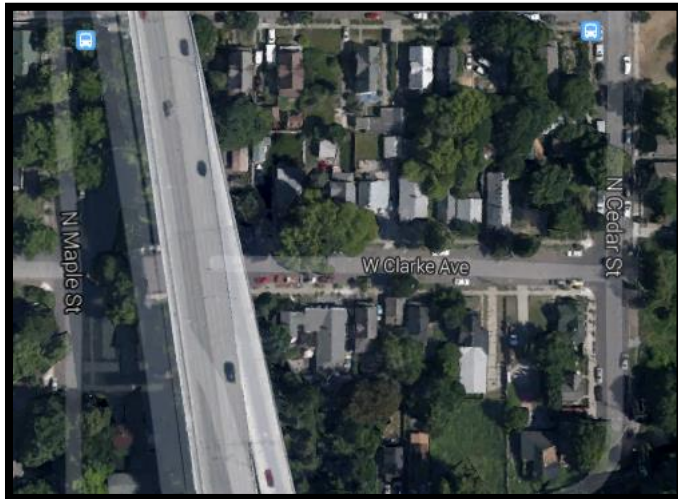
The mobile speed sign was placed at Clarke Ave. near Spruce St. to capture eastbound traffic from September 2nd to September 15th. There were 4,069 vehicles tracked in this location, the average speed was below the posted speed limit at 23.48mph which is lower than the posted speed limit.



Speed Statistics	
Posted	25
Average Speed	23.48
85 th Percentile	28
# Vehicles Tracked	4,069
# Over Limit	1,393
% over the limit	34.23%
% of speeders 1-5 over limit	85.71%
% of speeders 5-10 over limit	12.92%
% of speeders 10-15 over limit	1.22%
% of speeders 15 or more over limit	.15%

Peaceful Valley Neighborhood: Clarke Ave. near Cedar St.

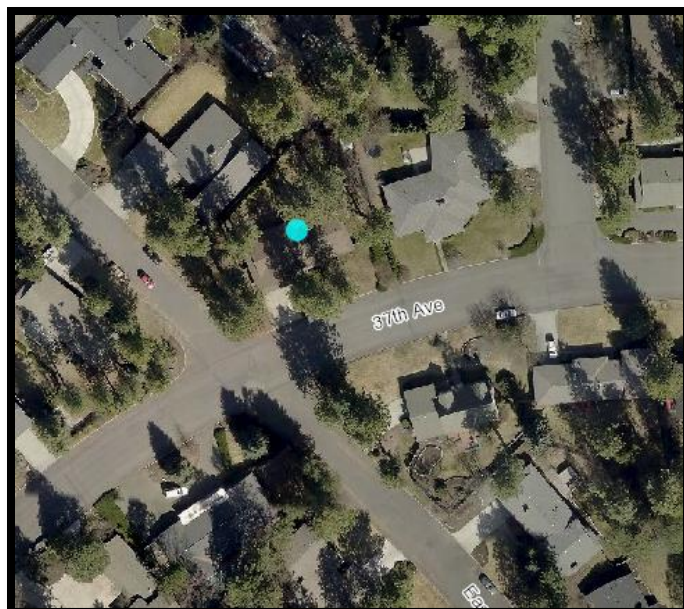
The mobile speed sign was placed at Clarke Ave. near Cedar St. to capture eastbound traffic from September 15th to September 29th. There were 146 vehicles tracked in this location there were no vehicles traveling over the posted 25 mph speed limit. The average speed was well below the posted speed limit at 14.52mph and the 8^{5th} percentile was also well below the speed limit at 17mph.



Speed Statistics	
Posted	25
Average Speed	14.52
85 th Percentile	17
# Vehicles Tracked	146
# Over Limit	0
% over the limit	0%
% of speeders 1-5 over limit	0%
% of speeders 5-10 over limit	0%
% of speeders 10-15 over limit	0%
% of speeders 15 or more over limit	0%

Comstock Neighborhood: 37th between W. 324 & 332

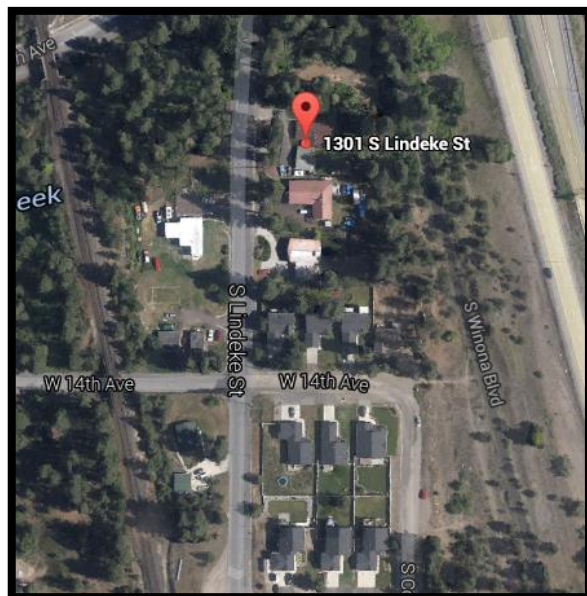
The mobile speed sign was placed on 37th between W. 324 and 332 to track westbound traffic from September 15th to September 29th. There were 67,623 vehicles tracked in this location, this is extremely high for a residential street, the high volumes may be due to the fact that 37th is a connector to High Drive from Bernard St. The speeds are a bit alarming even though the average speed was 24.18mph, of the 47.91% that were going over the speed limit 36.44% were traveling 5-10mph in this residential zone.



Speed Statistics	
Posted	25
Average Speed	24.18
85 th Percentile	32
# Vehicles Tracked	67,623
# Over Limit	32,400
% over the limit	47.91%
% of speeders 1-5 over limit	56.31%
% of speeders 5-10 over limit	36.44%
% of speeders 10-15 over limit	6.5%
% of speeders 15 or more over limit	.75%

Grandview Thorpe Neighborhood: 1301 N. Lindeke St.

The mobile speed sign was placed approximately at 1301 N. Lindeke St. to capture northbound traffic from September 29th to October 13th. There were 57,957 vehicles tracked in this location, this is a very high number of vehicles for a residential location, these numbers are likely due to Lindeke St. being used by many students to get to Government Way on their way to SFCC. The average speed was 24.67mph which is slightly lower than the posted 25mph.



Speed Statistics	
Posted	25
Average Speed	24.67
85 th Percentile	29
# Vehicles Tracked	57,957
# Over Limit	27,920
% over the limit	48.17%
% of speeders 1-5 over limit	80.8%
% of speeders 5-10 over limit	17.1%
% of speeders 10-15 over limit	1.7%
% of speeders 15 or more over limit	.4%

Comstock Neighborhood: 32nd Ave.

The mobile speed sign was placed on 32nd mid-block to capture eastbound traffic from September 29th to October 13th. There were 1,856 vehicles tracked in this location with an average speed of 22.67mph which is lower than the posted 25mph.



Speed Statistics	
Posted	25
Average Speed	22.67
85 th Percentile	29
# Vehicles Tracked	1,856
# Over Limit	571
% over the limit	30.76%
% of speeders 1-5 over limit	74.8%
% of speeders 5-10 over limit	21%
% of speeders 10-15 over limit	3.7%
% of speeders 15 or more over limit	.5%

Rockwood & Manito/Cannon Hill Neighborhoods: Grand Blvd at 21st Ave.

The mobile speed sign was placed on a wide planter strip on Grand Blvd. near 21st to capture northbound traffic from September 29th to October 13th. There were 91,248 vehicles tracked at this location with an average speed of 26.03mph this is 6mph over the posted 20mph park speed limit. Nearly 35% of vehicles were traveling 5-10mph over the posted speed limit. The sign may have picked up vehicles as they were slowing down for the park zone but not yet at the 20mph speed.



Speed Statistics	
Posted	20
Average Speed	26.03
85 th Percentile	31
# Vehicles Tracked	91,248
# Over Limit	77,829
% over the limit	85.29%
% of speeders 1-5 over limit	37.3%
% of speeders 5-10 over limit	40.3%
% of speeders 10-15 over limit	18.9%
% of speeders 15 or more over limit	3.5%

District Three:

Balboa/SIT Neighborhood: Woodside Ave. & Bruce St.

The mobile speed sign was placed at Woodside Ave. and Bruce St. facing westbound traffic from March 30th-April 14th. There were 38,844 cars tracked in this location of those 66.41% were traveling over the posted speed limit of 25mph and the average speed was 26.82mph just over the limit.



Speed Statistics	
Posted	25
Average Speed	26.82
85 th Percentile	30
# Vehicles Tracked	38,844
# Over Limit	25,798
% over the limit	66.41%
% of speeders 1-5 over limit	80.7%
% of speeders 5-10 over limit	17.1%
% of speeders 10-15 over limit	1.5%
% of speeders 15 or more over limit	.70%

West Central Neighborhood: Maple St. & Broadway

The mobile speed sign was placed on the grassy section on Maple St. and Broadway Ave. tracking northbound traffic from March 30th-April 14th. There were 163,838 cars tracked in this location of those 72.23% were traveling over the posted speed limit of 30mph and the 85th percentile was 43mph over the posted limit.



Speed Statistics	
Posted	30
Average Speed	35.18
85 th Percentile	43
# Vehicles Tracked	163,838
# Over Limit	118,342
% over the limit	72.23%
% of speeders 1-5 over limit	35.5%
% of speeders 5-10 over limit	32.3%
% of speeders 10-15 over limit	21.1%
% of speeders 15 or more over limit	11.2%

North Hill Neighborhood: Garland Ave. near Stevens St.

The mobile speed sign was placed on Garland Ave near Stevens St. in the 20mph zone of the business district from April 14th to April 30th. During the time that the sign was placed there were 137,100 vehicles tracked with 87.58% traveling over the posted 20mph speed. This is an area where permanent speed feedback signs are to be installed in 2014.



Speed Statistics	
Posted	20
Average Speed	26.54
85 th Percentile	31
# Vehicles Tracked	137,100
# Over Limit	120,078
% over the limit	72.23%
% of speeders 1-5 over limit	35.5%
% of speeders 5-10 over limit	32.3%
% of speeders 10-15 over limit	21.1%
% of speeders 15 or more over limit	11.2%

Balboa/SIT Neighborhood: Lyons Ave. and A St.

The mobile sign was placed at Lyons and A St. from April 30th to May 12th. There were 6,163 vehicles tracked in the two week period with an average speed of 23mph which is below the posted speed limit of 25mph.



Speed Statistics	
Posted	25
Average Speed	23.27
85 th Percentile	29
# Vehicles Tracked	6,163
# Over Limit	2,271
% over the limit	36.84%
% of speeders 1-5 over limit	77.7%
% of speeders 5-10 over limit	19.5%
% of speeders 10-15 over limit	1.9%
% of speeders 15 or more over limit	.9%

North Hill Neighborhood: Garland Ave. near Madison Ave.

The mobile speed sign was placed on Garland Ave near Madison Ave. in the 20mph zone of the business district from April 28th to May 12th. During the time that the sign was placed there were 96,784 total vehicles tracked with 83.23% traveling over the posted 20mph speed. This is an area where permanent speed feedback signs are to be installed in 2014 hoping that it will help with the high speeds.



Speed Statistics	
Posted	20
Average Speed	26.05
85 th Percentile	32
# Vehicles Tracked	96,784
# Over Limit	80,561
% over the limit	83.23%
% of speeders 1-5 over limit	33.2%
% of speeders 5-10 over limit	41.5%
% of speeders 10-15 over limit	21.7%
% of speeders 15 or more over limit	3.6%

North Hill Neighborhood: Monroe St. & Cora Ave.

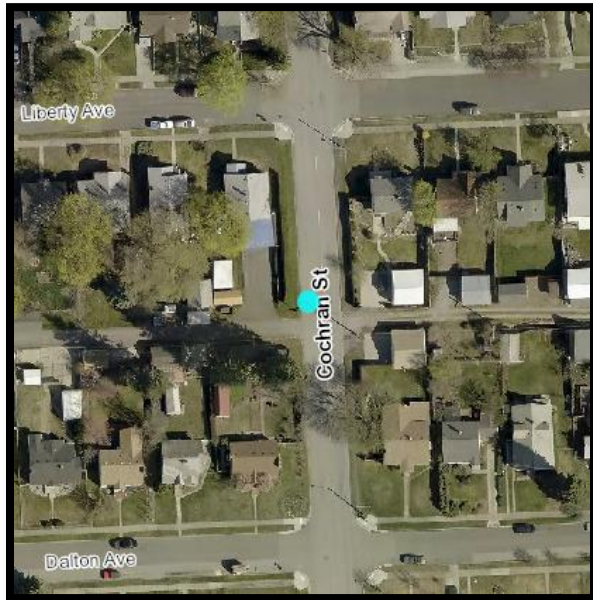
The sign was placed on Monroe and Cora from May 13th to May 29th to capture southbound traffic entering into the business district area. There were 100,030 vehicles tracked during the two week period with 76.8% traveling over the posted speed of 30mph, the bulk of the speeders were within the 5 mph over pace but that still left 25% of vehicles traveling 5-10mph over the posted limit.



Speed Statistics	
Posted	30
Average Speed	32.97
85 th Percentile	36
# Vehicles Tracked	100,030
# Over Limit	76,894
% over the limit	76.87%
% of speeders 1-5 over limit	71.5%
% of speeders 5-10 over limit	25.6%
% of speeders 10-15 over limit	2.4%
% of speeders 15 or more over limit	.31%

Northwest Neighborhood: 3255 N. Cochran

The mobile speed sign was placed at 3255 N. Cochran from May 12th to May 27th to capture northbound traffic. During this time period there were 177,988 vehicles tracked with an average speed of 30.99mph this is just over the posted 30mph on Cochran. This is a very heavily traveled road that connects Northwest Blvd to Driscoll Blvd.



Speed Statistics	
Posted	30
Average Speed	30.99
85 th Percentile	35
# Vehicles Tracked	177,988
# Over Limit	99,746
% over the limit	44.64%
% of speeders 1-5 over limit	79.63%
% of speeders 5-10 over limit	17.4%
% of speeders 10-15 over limit	2.3%
% of speeders 15 or more over limit	.67%

West Hills Neighborhood: Garland Ave. near Stevens St.

The mobile speed sign was placed from May 29th to June 9th, but was only able to track data for 9 hours. The sign was placed to track northbound traffic on Government Way by the cemetery on the way to Spokane Falls Community College.



Speed Statistics	
Posted	30
Average Speed	33.44
85 th Percentile	37
# Vehicles Tracked	5,232
# Over Limit	4,253
% over the limit	81.28%
% of speeders 1-5 over limit	61%
% of speeders 5-10 over limit	34.5%
% of speeders 10-15 over limit	3.6%
% of speeders 15 or more over limit	.90%

West Central Neighborhood: Pettit Dr. & Maxwell Ave.

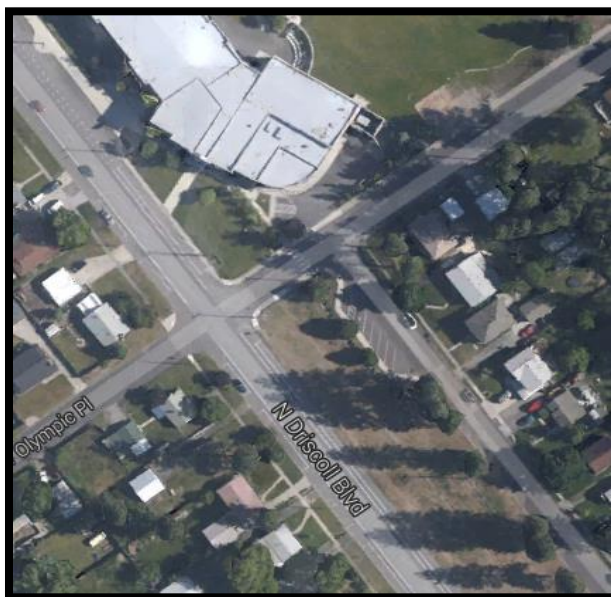
The mobile speed sign was placed at Pettit and Maxwell near Nettleton Triangle from June 9th to June 23rd unfortunately only 18 hours were saved, during this time the posted limit is 20mph due to the pool. The sign picked up 1,323 vehicles during the 18 hours it saved data with an average speed of 22.17mph and 85th percentile was going 28mph.



Speed Statistics	
Posted	20
Average Speed	22.17
85 th Percentile	28
# Vehicles Tracked	1,323
# Over Limit	65
% over the limit	4.91%
% of speeders 1-5 over limit	98.4%
% of speeders 5-10 over limit	1.6%
% of speeders 10-15 over limit	0%
% of speeders 15 or more over limit	0%

Northwest Neighborhood: 4902 N. Driscoll Blvd

The mobile speed sign was near 4902 N. Driscoll Blvd to capture northbound traffic on the arterial from September 16th to September 29th. This road leads up to Brown Elementary where the speed limit is 20 near the school but when school is not in the speed limit is 30mph. There were 86,148 vehicles tracked in this location of those 50.76% were traveling over the posted speed limit of 30mph.



Speed Statistics	
Posted	30
Average Speed	29.95
85 th Percentile	33
# Vehicles Tracked	86,148
# Over Limit	37,876
% over the limit	43.96%
% of speeders 1-5 over limit	86.85%
% of speeders 5-10 over limit	11.52%
% of speeders 10-15 over limit	.97%
% of speeders 15 or more over limit	.66%

