

DISTRICT 1:

Chief Garry Park:

The mobile speed sign was placed on Greene St. just south of the Greene St. Bridge facing southbound traffic from March 4th through March 19th. The sign was placed across the street from Spokane Community College. There were 215,604 vehicles tracked by the sign of those 32.77% were traveling over the posted speed limit.



Speed Statistics	
Posted	35
Average Speed	33.2
85 th Percentile	38
# Vehicles Tracked	215,604
# Over Limit	70,657
% over the limit	32.77%
% of speeders 1-5 over limit	86.27%
% of speeders 5-10 over limit	11.9%
% of speeders 10-15 over limit	.83%
% of speeders 15 or more over limit	.61%

Logan Neighborhood:

The mobile sign was placed on the south side of Euclid Ave. facing eastbound traffic from March 4th to March 19th. The area where the sign was placed was near Gonzaga Prep where the neighborhood is concerned with the students and parents speeding through the area to get to the school.



Speed Statistics	
Posted	20
Average Speed	18.14
85 th Percentile	22
# Vehicles Tracked	4538
# Over Limit	192
% over the limit	29.17%
% of speeders 1-5 over limit	85.5%
% of speeders 5-10 over limit	13.97%
% of speeders 10-15 over limit	.53%
% of speeders 15 or more over limit	0%

Minnehaha Neighborhood:

The speed sign was placed at 2708 N. Freya from March 19th-April 1st to track northbound traffic, unfortunately there was a card error and data was not retrieved.



Bemiss Neighborhood:

The speed sign was placed at Empire and Cook from June 10th to July 2nd. This area is near the Northeast Community Center, a public library and Shaw Middle School this across the Empire from a large residential area including multi-family housing. There were 212,139 vehicles tracked, of those 20.39% were traveling over the speed limit.



Speed Statistics	
Posted	30
Average Speed	24.8
85 th Percentile	32
# Vehicles Tracked	212,139
# Over Limit	43,264
% over the limit	20.39%
% of speeders 1-5 over limit	78.03%
% of speeders 5-10 over limit	18.74%
% of speeders 10-15 over limit	2.37%
% of speeders 15 or more over limit	.86%

Whitman:

The mobile sign was placed at 2103 N. Rowan on Crestline St. from July 2nd to July 16th facing northbound traffic. The SD card only tracked for a week of time even though the sign was in this location for two weeks. There were 43,453 vehicles tracked of those 28,387 were traveling over the speed limit.



Speed Statistics	
Posted	30
Average Speed	31.65
85 th Percentile	36
# Vehicles Tracked	43,543
# Over Limit	28,387
% over the limit	65.19%
% of speeders 1-5 over limit	69.6%
% of speeders 5-10 over limit	25.7%
% of speeders 10-15 over limit	3.9%
% of speeders 15 or more over limit	.8%

Chief Garry Park:

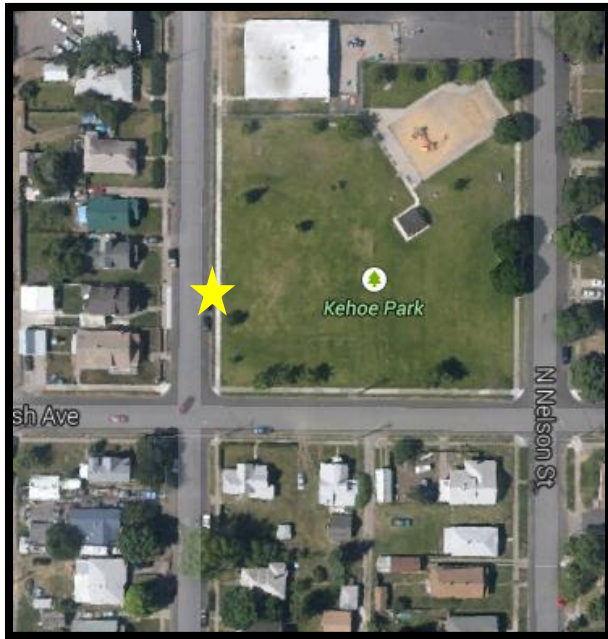
The sign was placed at Chief Garry Park on Mission to catch cars traveling eastbound from July 2nd to July 16th. The speed by the park is 20mph for the two weeks that the sign was placed there were 81,388 vehicles tracked of those 75.01% were traveling over the posted speed limit.



Speed Statistics	
Posted	20
Average Speed	24.88
85 th Percentile	32
# Vehicles Tracked	81,388
# Over Limit	61,051
% over the limit	75.01%
% of speeders 1-5 over limit	46.2%
% of speeders 5-10 over limit	28.4%
% of speeders 10-15 over limit	18.2%
% of speeders 15 or more over limit	7.2 %

Hillyard/Bemiss:

The sign was placed next to Kehoe Park near Wabash and Lacey from July 30th to August 12th tracking west bound traffic. The sign tracked 6,643 vehicles of those only 3.91% were traveling over the posted speed limit of 25mph.



Speed Statistics	
Posted	25
Average Speed	16.57
85 th Percentile	22
# Vehicles Tracked	6,643
# Over Limit	260
% over the limit	3.91%
% of speeders 1-5 over limit	83.1%
% of speeders 5-10 over limit	8.8%
% of speeders 10-15 over limit	4.2%
% of speeders 15 or more over limit	3.8%

Bemiss:

The sign was placed on Crestline St in between Courtland and Bridgeport Ave. to track vehicles traveling south bound from July 30th to August 12th. This area was a concern for the neighborhood because there is a lot of pedestrian and car activity due to the gas station. There were 137,820 vehicles tracked of those 32.77% were traveling over the posted speed limit of 30mph.



Speed Statistics	
Posted	30
Average Speed	28.39
85 th Percentile	33
# Vehicles Tracked	137,820
# Over Limit	45,164
% over the limit	32.77%
% of speeders 1-5 over limit	80.63%
% of speeders 5-10 over limit	16.53%
% of speeders 10-15 over limit	2.05%
% of speeders 15 or more over limit	.79%

Chief Garry Park:

The sign was placed on Mission Ave. outside of Stevens Elementary School from August 27th to September 9th tracking east bound traffic. The sign picked up 115,123 vehicles of those 39.45% were traveling over the speed limit. The neighborhood is concerned with this area due to the school and the high volume of traffic on Mission Ave. This area is a little tricky due to the fact that the speed is different depending on if students are present between the times that school is in session.



Speed Statistics	
Posted	30
Average Speed	28.98
85 th Percentile	34
# Vehicles Tracked	115,123
# Over Limit	45424
% over the limit	39.45%
% of speeders 1-5 over limit	75.5%
% of speeders 5-10 over limit	20.5%
% of speeders 10-15 over limit	3.06%
% of speeders 15 or more over limit	.85%

Nevada Lidgerwood:

The sign was placed at 1228 E. Courtland Ave to track eastbound traffic from September 9th to September 30th. There were 2,184 cars tracked of those only 3.75% were traveling over the posted speed limit of 25mph.



Speed Statistics	
Posted	25
Average Speed	16.91
85 th Percentile	22
# Vehicles Tracked	2184
# Over Limit	82
% over the limit	3.75%
% of speeders 1-5 over limit	90.2%
% of speeders 5-10 over limit	3.7%
% of speeders 10-15 over limit	2.4%
% of speeders 15 or more over limit	3.7%

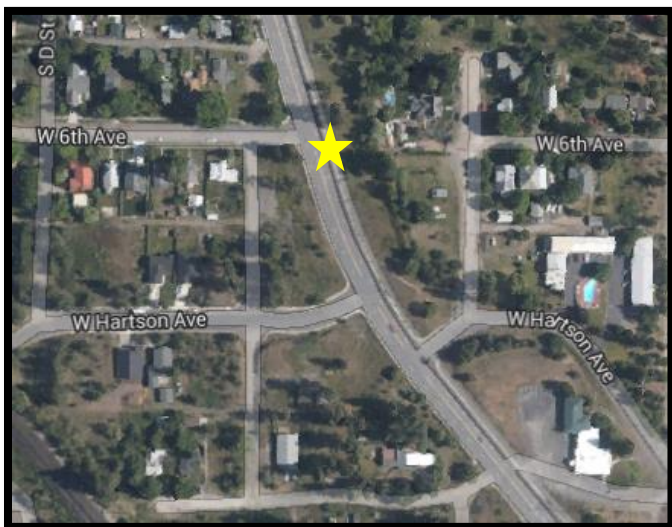
Logan:

The sign was placed to catch traffic from July 31st to August 12th to track _____ bound traffic. Of the 13,229 vehicles tracked only 1.68% were traveling over the speed limit.

Speed Statistics	
Posted	25
Average Speed	17.16
85 th Percentile	21
# Vehicles Tracked	13,229
# Over Limit	223
% over the limit	1.68%
% of speeders 1-5 over limit	75.8%
% of speeders 5-10 over limit	12.1%
% of speeders 10-15 over limit	5.8%
% of speeders 15 or more over limit	6.3%

West Hills:

The sign was placed on Government Way tracking vehicles traveling north bound towards Spokane Falls Community College from October 10th to October 19th. There is concern that the high volume of traffic is speeding through this curve. There were 45,897 vehicles tracked of those 84.4% were traveling over the posted speed limit of 30mph.



Speed Statistics	
Posted	30
Average Speed	33.37
85 th Percentile	38
# Vehicles Tracked	45,897
# Over Limit	38,748
% over the limit	84.4%
% of speeders 1-5 over limit	57.2%
% of speeders 5-10 over limit	34.6%
% of speeders 10-15 over limit	6.9%
% of speeders 15 or more over limit	1.3%

DISTRICT 2:

Southgate:

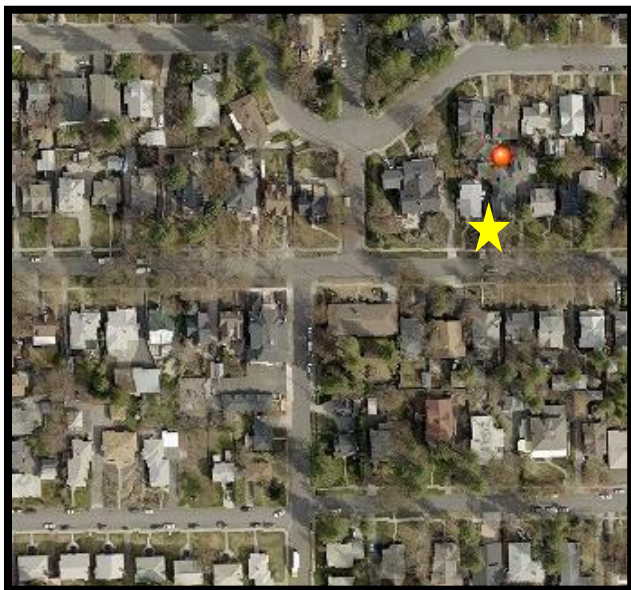
The mobile speed sign was placed in the Southgate Neighborhood on the eastside of Regal tracking vehicles traveling southbound traffic. The sign was in this location from March 4th to March 19th. The location of the sign was a commercial area and on the Southeast Sports Complex, which draws a lot of traffic from out of the area for sports events. Of the vehicles tracked 37.2% were going over the speed limit.



Speed Statistics	
Posted	30
Average Speed	28.59
85 th Percentile	33
# Vehicles Tracked	116,649
# Over Limit	43,395
% over the limit	37.2%
% of speeders 1-5 over limit	82%
% of speeders 5-10 over limit	15.4%
% of speeders 10-15 over limit	1.99%
% of speeders 15 or more over limit	.61%

Cliff/Cannon:

The sign was placed at 614 W. 14th between March 4th and March 18th to track westbound traffic. The sign only collected data for 4 days though it was placed for two weeks. Of the data that was collected there were 9,103 vehicles tracked of those 46.19% were traveling over the speed limit of 25 mph.



Speed Statistics	
Posted	25
Average Speed	25.04
85 th Percentile	30
# Vehicles Tracked	9,103
# Over Limit	4,205
% over the limit	46.19%
% of speeders 1-5 over limit	77%
% of speeders 5-10 over limit	20%
% of speeders 10-15 over limit	2%
% of speeders 15 or more over limit	1%

East Central Neighborhood:

The mobile speed sign was placed at Perry St. and 9th Ave. facing northbound traffic from March 19th through April 1st. On this section of Perry St. the posted speed limit on Perry St. is 20 mph this area is a major commercial center in the neighborhood. There were 55,812 vehicles tracked by the sign of those 82.3% were traveling over the posted speed limit.



Speed Statistics	
Posted	20
Average Speed	24.95
85 th Percentile	30
# Vehicles Tracked	55,812
# Over Limit	45,954
% over the limit	82.3%
% of speeders 1-5 over limit	45.4%
% of speeders 5-10 over limit	40%
% of speeders 10-15 over limit	12.6%
% of speeders 15 or more over limit	2%

Grandview Thorpe Neighborhood:

The mobile speed sign was placed at D. St. around 18th Ave. facing northbound traffic from March 19th through April 1st. The sign was located in a residential area and next to a park with a playground. There were 15,849 vehicles tracked by the sign, of those 29.87% were traveling over the posted speed limit.



Speed Statistics	
Posted	25
Average Speed	23.41
85 th Percentile	27
# Vehicles Tracked	20,301
# Over Limit	6,064
% over the limit	29.87%
% of speeders 1-5 over limit	90.4%
% of speeders 5-10 over limit	8.41%
% of speeders 10-15 over limit	.82%
% of speeders 15 or more over limit	.37%

Comstock Neighborhood:

The mobile speed sign was placed approximately at 3511 S. High Drive on the bluff side facing eastbound traffic from March 19th through April 1st. Though the sign was placed in the location for this period of time the SD only collected data from March 19th to March 21st. There are not very many homes near this area but this is a high activity area for recreation. There were 5,666 vehicles tracked by the sign, of those 62.12% were traveling over the posted speed limit.



Speed Statistics	
Posted	30
Average Speed	31.52
85 th Percentile	35
# Vehicles Tracked	5,666
# Over Limit	3520
% over the limit	62.12%
% of speeders 1-5 over limit	82.1%
% of speeders 5-10 over limit	16.14%
% of speeders 10-15 over limit	1.5%
% of speeders 15 or more over limit	.25%

Lincoln Heights Neighborhood:

The mobile speed sign was placed on Freya near 18th Ave. to track vehicles traveling southbound from April 22nd to May 14th. There were 205,080 vehicles tracked with 24.59% traveling over the posted speed limit.

Speed Statistics	
Posted	20
Average Speed	27.28
85 th Percentile	32
# Vehicles Tracked	205,080
# Over Limit	50,432
% over the limit	24.59%
% of speeders 1-5 over limit	87.5%
% of speeders 5-10 over limit	10.9%
% of speeders 10-15 over limit	.97%
% of speeders 15 or more over limit	.18%

Lincoln Heights Neighborhood:

The mobile speed sign was placed on 27th Ave. between Southeast Blvd to Ray St from May 28th to June 10th to track vehicles traveling eastbound. There were 32,514 vehicles tracked with 27.22% traveling over the posted speed limit of 25mph. This is an area of concern for the neighborhood because there is a lack of sidewalks on the south side of the street and because it is being used as a cut through between Southeast Blvd and Ray St.



Speed Statistics	
Posted	25
Average Speed	22.66
85 th Percentile	27
# Vehicles Tracked	32,514
# Over Limit	7509
% over the limit	27.22%
% of speeders 1-5 over limit	84.8%
% of speeders 5-10 over limit	12.9%
% of speeders 10-15 over limit	1.6%
% of speeders 15 or more over limit	.7%

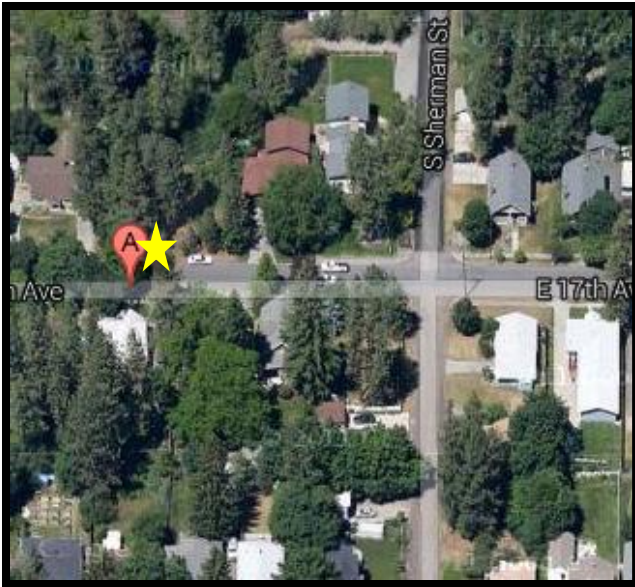
Rockwood Neighborhood:

The sign was placed in this location at a bad time. Construction began on Rockwood and the SD card did not save the data.

Rockwood Neighborhood:

The mobile speed sign was placed approximately 500 block of 17th St. facing eastbound traffic from May 28th to June 10th. The signs SD card failed to pick up data after the first 10 hours. From the time that it was tracking vehicles there were 1001 tracked and of those 9.59% were traveling over the speed limit.

Speed Statistics	
Posted	25
Average Speed	19.29
85 th Percentile	24
# Vehicles Tracked	1001
# Over Limit	96
% over the limit	9.59%
% of speeders 1-5 over limit	78%
% of speeders 5-10 over limit	21%



% of speeders 10-15 over limit	1%
% of speeders 15 or more over limit	0%

East Central Neighborhood:

The mobile speed sign was placed on South Perry St. for traffic traveling southbound from May 28th to June 10th. This area is the South Perry Business District where the speed limit falls to 20mph. The speed sign tracked 58,931 vehicles of those 31,569 were traveling over the speed limit.



Speed Statistics	
Posted	20
Average Speed	20.67
85 th Percentile	26
# Vehicles Tracked	58,931
# Over Limit	31,569
% over the limit	53.56%
% of speeders 1-5 over limit	68.5%
% of speeders 5-10 over limit	27.5%
% of speeders 10-15 over limit	3.2%
% of speeders 15 or more over limit	.8%

Manito/Cannon Hill Neighborhood

The mobile speed sign was placed in the Manito/ Cannon Hill Neighborhood on the eastside of Lincoln Street tracking vehicles traveling southbound traffic. The location of the sign was on an arterial just south of Wilson Elementary. The sign was placed June 10th to June 25th, though the sign was out and giving speed feedback the card had an error and there was only a half an hour worth of data collected. There were 131 vehicles tracked, 18.32% were traveling over the speed limit.



Speed Statistics	
Posted	30



Average Speed	26.52
85 th Percentile	31
# Vehicles Tracked	131
# Over Limit	24
% over the limit	18.32%
% of speeders 1-5 over limit	100%
% of speeders 5-10 over limit	0%
% of speeders 10-15 over limit	0%
% of speeders 15 or more over limit	0%

Peaceful Valley Neighborhood:

The mobile speed feedback sign was placed on Main St. entering into Peaceful Valley from June 10th to July 2nd. This area is all residential. There were 89,132 vehicles tracked of those 40.23% were traveling over the posted speed limit of 25mph.



Speed Statistics	
Posted	25
Average Speed	23.86
85 th Percentile	29
# Vehicles Tracked	89,132
# Over Limit	35,861
% over the limit	40.23%
% of speeders 1-5 over limit	75.8%
% of speeders 5-10 over limit	20.9%
% of speeders 10-15 over limit	2.5%
% of speeders 15 or more over limit	.8%

Comstock Neighborhood:

The mobile sign was requested to be placed at 1224 E. 39th facing traffic traveling westbound. This area was of concern to a neighbor because she was seeing people traveling from Perry St to Grand Blvd. The sign only tracked for 9 hours for the two weeks that the sign was placed on the street, there were 165 vehicles tracked for the 9 hours the sign was placed.



Speed Statistics	
Posted	25
Average Speed	16.97
85 th Percentile	23
# Vehicles Tracked	165
# Over Limit	7
% over the limit	4.24%
% of speeders 1-5 over limit	71.4%
% of speeders 5-10 over limit	14.3%
% of speeders 10-15 over limit	0%
% of speeders 15 or more over limit	14.3%

Rockwood Neighborhood:

The mobile sign was placed at on S. Hatch Rd in-between 26th and 27th. The sign was placed for two weeks in between July 16 and July 30th for tracking southbound traffic. This area was a concern due to the straight nature of the road. Unfortunately there was an error in the card and it was not able to pick up speeds during this time period.



East Central Neighborhood:

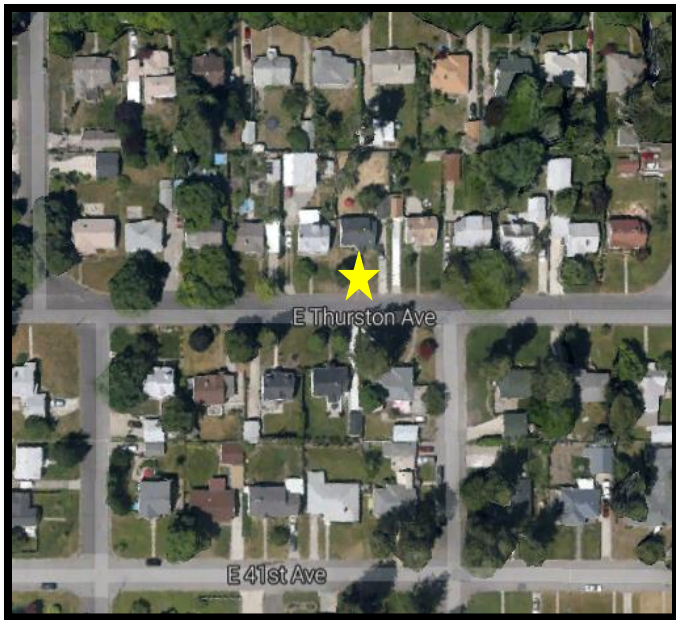
The mobile speed sign was placed at 1857 E. 9th for westbound traffic from July 30th to August 13th. This was a call in from a concerned citizen who lived at this location. She sees speeding cars go by every day and is concerned because children use the street to get to Grant Elementary. The card had an error and only picked up 8 hours' worth of data.



Speed Statistics	
Posted	30
Average Speed	27.61
85 th Percentile	31
# Vehicles Tracked	2082
# Over Limit	421
% over the limit	20%
% of speeders 1-5 over limit	90.5%
% of speeders 5-10 over limit	7.6%
% of speeders 10-15 over limit	.8%
% of speeders 15 or more over limit	1.19%

Comstock:

The sign was placed at 919 E. Thurston Ave. from August 12th to September 9th tracking westbound traffic. There were 32,159 vehicles tracked in the two week period with an average speed of 21.86mph which is below the posted speed limit of 25mph.



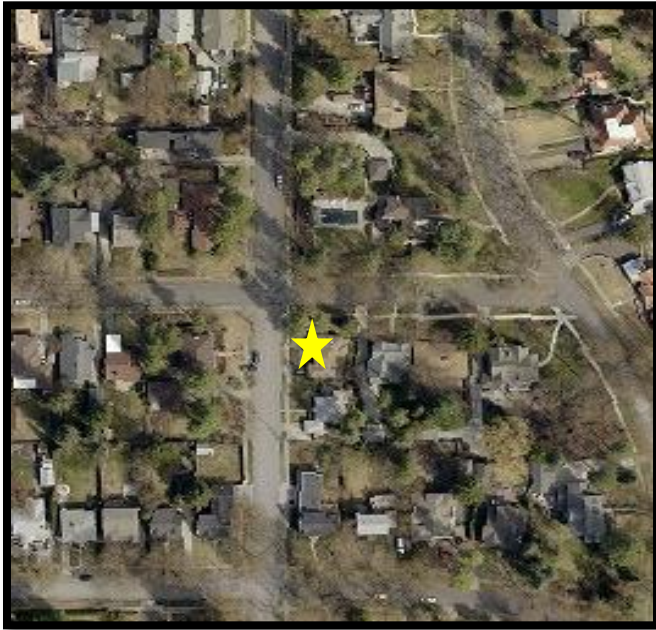
Speed Statistics	
Posted	25
Average Speed	21.86
85 th Percentile	27
# Vehicles Tracked	32,159
# Over Limit	7,590
% over the limit	23.6%
% of speeders 1-5 over limit	86.6%
% of speeders 5-10 over limit	12%
% of speeders 10-15 over limit	1%
% of speeders 15 or more over limit	.4%

Peaceful Valley:

The sign was placed near 2100 W. Clarke. Ave (east of S. Curve) from August 27th to September 9th tracking westbound traffic.

Rockwood:

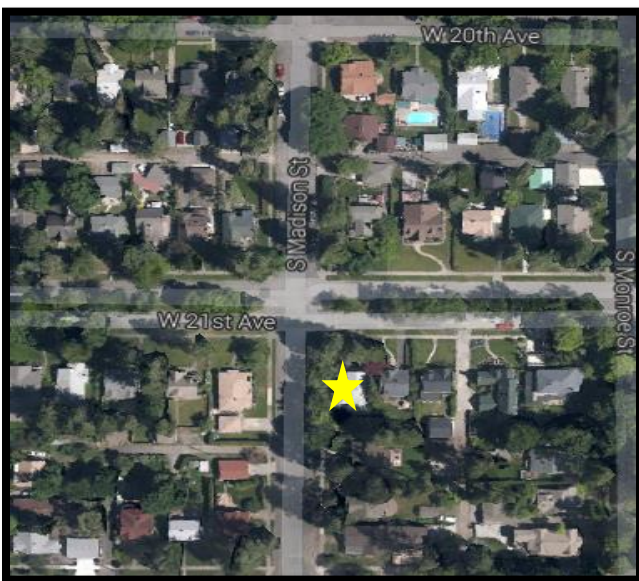
The sign was placed from September 9th to September 30th at 1900 S. Hatch to track north bound traffic. There were 11,472 vehicles tracked of those there was only 3.83% traveling over the posted speed limit of 25mph.



Speed Statistics	
Posted	25
Average Speed	17.41
85 th Percentile	22
# Vehicles Tracked	11,472
# Over Limit	440
% over the limit	3.83%
% of speeders 1-5 over limit	86.6%
% of speeders 5-10 over limit	7.7%
% of speeders 10-15 over limit	1.8%
% of speeders 15 or more over limit	3.9%

Manito/Cannon Hill:

The sign was placed at 2105 S. Madison from September 9th to September 30th to track northbound traffic. The sign captured 1,104 cars of those 99 were traveling over the speed limit. This is an area of concern for the immediate neighbors because they see large influx of traffic and speeds during the times when parents are dropping off and picking up children from Wilson Elementary which is located a few blocks south of this location.



Speed Statistics	
Posted	25
Average Speed	18.65
85 th Percentile	24
# Vehicles Tracked	1,104
# Over Limit	99
% over the limit	8.96%
% of speeders 1-5 over limit	85.9%
% of speeders 5-10 over limit	14.1%
% of speeders 10-15 over limit	0%
% of speeders 15 or more over limit	0%

Southgate:

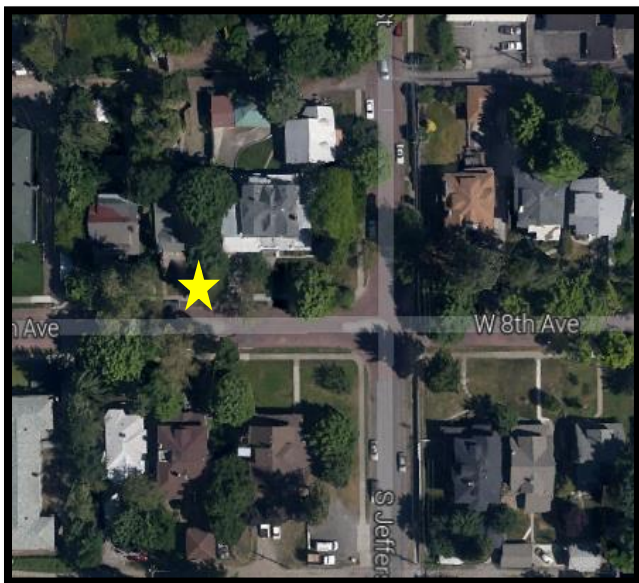
The mobile sign was placed at 39th & Napa St. tracking southbound traffic from September 30th to October 10th. This location is right by Hamblin Elementary School. There were 8,678 total vehicles tracked, of those 11.18% were going over the speed limit.



Speed Statistics	
Posted	25
Average Speed	19.1
85 th Percentile	25
# Vehicles Tracked	8678
# Over Limit	971
% over the limit	11.18%
% of speeders 1-5 over limit	87.3%
% of speeders 5-10 over limit	9.2%
% of speeders 10-15 over limit	2.4%
% of speeders 15 or more over limit	1.1%

Cliff/Cannon:

The mobile sign was placed at 8th and Jefferson to track westbound traffic from October 7th to October 21st. There were 513 vehicles tracked, the sign only tracked vehicles for one week though it was placed for two weeks. Of the vehicles tracked the average speed was 18.03mph which is below the posted limit of 25mph.



Speed Statistics	
Posted	25
Average Speed	18.03
85 th Percentile	23
# Vehicles Tracked	513
# Over Limit	31
% over the limit	6.04%
% of speeders 1-5 over limit	70.9%
% of speeders 5-10 over limit	16.3%
% of speeders 10-15 over limit	3.2%
% of speeders 15 or more over limit	9.6%

DISTRICT 3

Balboa/SIT Neighborhood

The mobile sign was placed at Alberta and Woodside facing south tracking northbound traffic from March 4th to March 19th. There were 10,081 vehicles tracked of those tracked there was .48% traveling over the posted speed limit of 25mph.



Speed Statistics	
Posted	25
Average Speed	14.07
85 th Percentile	16
# Vehicles Tracked	10,801
# Over Limit	52
% over the limit	.48%
% of speeders 1-5 over limit	76.92%
% of speeders 5-10 over limit	11.53%
% of speeders 10-15 over limit	5.75%
% of speeders 15 or more over limit	5.80%

Five Mile Neighborhood:

The sign that was placed in the Five Mile Neighborhood at Five Mile Rd and Strong was vandalized and was not able to pick up and data. It was placed in this location on March 19th to April 1st.

West Central Neighborhood:

The mobile speed sign was placed at 1803 W. Maxwell Ave. facing westbound traffic from March 19th through April 2nd. The sign was located outside the Native Health of Spokane facility as well as being just a block before Cannon Playground that includes a pool. There were 77,273 vehicles tracked by the sign, of those 9.63% were traveling over the posted speed limit.



Speed Statistics	
Posted	30
Average Speed	24.26
85 th Percentile	30
# Vehicles Tracked	77,273
# Over Limit	7,449
% over the limit	9.63%
% of speeders 1-5 over limit	91.82%
% of speeders 5-10 over limit	6.36%
% of speeders 10-15 over limit	.87%
% of speeders 15 or more over limit	1.8%

Emerson Garfield Neighborhood:

The mobile speed sign was placed on Chelan Ave. and N. Jefferson St. facing westbound traffic from May 14th to May 28th. This is a residential area that is inbetween to large arterials that run through the neighborhood going north and south. The concern of the neighborhood is that this is used for a cut through from Monroe to Maple/Ash.



Speed Statistics	
Posted	25
Average Speed	16.51
85 th Percentile	21
# Vehicles Tracked	17,366
# Over Limit	391
% over the limit	2.25%
% of speeders 1-5 over limit	78.3%
% of speeders 5-10 over limit	17.6%
% of speeders 10-15 over limit	1.3%
% of speeders 15 or more over limit	2.8%

North Indian Trail Neighborhood:

The sign was placed on Indian Trail near Ridgecrest facing southbound traffic from May 14th to May 28th. This area is primarily residential but is just past a large built up commercial area. There were 114,699 vehicles tracked of those 47,330 were traveling over the speed limit but the majority of the speeders were within 5MPH of the posted speed limit.



Speed Statistics	
Posted	35
Average Speed	33.54
85 th Percentile	39
# Vehicles Tracked	114,699
# Over Limit	47,330
% over the limit	41.26%
% of speeders 1-5 over limit	80.68%
% of speeders 5-10 over limit	16.01%
% of speeders 10-15 over limit	2.13%
% of speeders 15 or more over limit	1.18%

Emerson Garfield Neighborhood:

The mobile sign was placed on Lincoln from Monroe to Nora and Augusta. This is a residential area that has a large church located on this stretch of road. The sign was placed in this location from June 10th to July 2nd tracking southbound traffic. There were 4,276 vehicles tracked of those 49.22% were traveling over the speed limit.



Speed Statistics	
Posted	25
Average Speed	25.15
85 th Percentile	30
# Vehicles Tracked	4276
# Over Limit	2105
% over the limit	49.22%
% of speeders 1-5 over limit	73.25%
% of speeders 5-10 over limit	21.52%
% of speeders 10-15 over limit	4.04%
% of speeders 15 or more over limit	1.19%

North Hill Neighborhood:

The mobile speed sign was placed on 1101 W. Garland Ave near Madison St. from June 10th to July 2nd. The sign was located just after the change of speed to 20mph for the Garland Business District. The sign tracked 159,126 vehicles in the two week period of those 83.91% were traveling over the posted 20mph speed limit.



Speed Statistics	
Posted	20
Average Speed	26.03
85 th Percentile	31
# Vehicles Tracked	159,126
# Over Limit	133,530
% over the limit	83.91%
% of speeders 1-5 over limit	33.5%
% of speeders 5-10 over limit	41.9%
% of speeders 10-15 over limit	21.2%
% of speeders 15 or more over limit	3.4%

Northwest Neighborhood:

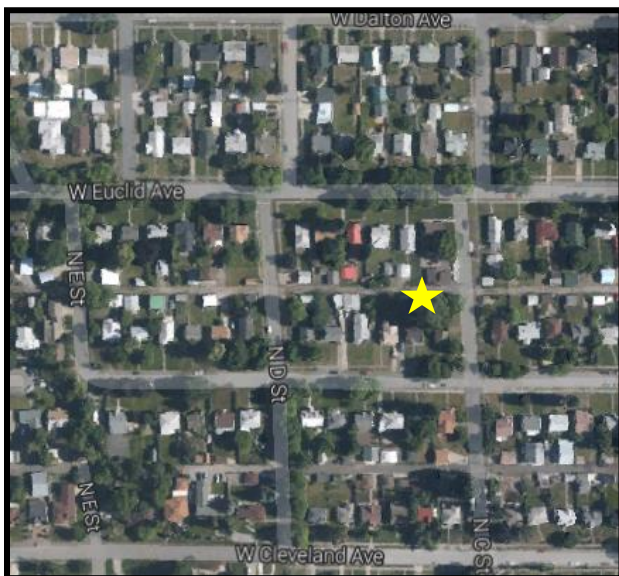
The mobile sign was placed in the parking strip from July 2nd to July 16th facing northwest bound traffic. This area is near Audubon Park where the speed limit is 20mph. When the sign was being placed at the location there was a traffic cop who was pulling someone over so there was a noticeable issue in this area with speeding traffic. There were 66,604 vehicles tracked of those 54,423 were traveling over the posted speed limit.



Speed Statistics	
Posted	20
Average Speed	24.85
85 th Percentile	30
# Vehicles Tracked	66,604
# Over Limit	54,423
% over the limit	81.71%
% of speeders 1-5 over limit	49.8%
% of speeders 5-10 over limit	32.5%
% of speeders 10-15 over limit	15.2%
% of speeders 15 or more over limit	2.5%

Northwest:

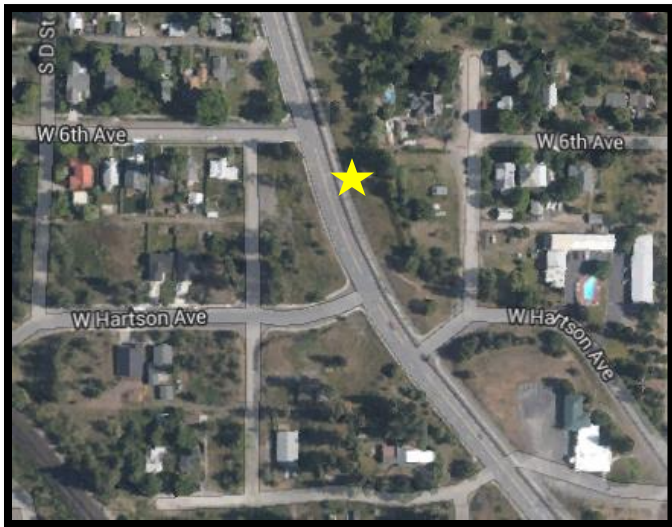
The mobile sign was placed on near Euclid Ave. and D St. from August 9th to August 20th to capture westbound traffic (towards the Down River Golf Course). Due to the golf course the neighbors see an increase in traffic on Euclid Ave. This is a residential street with a speed of 25mph there were 47,302 cars tracked within the two weeks. Of the vehicles tracked 82.94% were traveling over the posted speed limit. The average vehicles per day numbers were also very high for a residential street at 3,638. Even more alarming is the percentage of those speeding 37.8% were traveling 10-15mph over the posted 25mph.



Speed Statistics	
Posted	25
Average Speed	32.51
85 th Percentile	39
# Vehicles Tracked	47,302
# Over Limit	39,237
% over the limit	82.94%
% of speeders 1-5 over limit	14.5%
% of speeders 5-10 over limit	39.5%
% of speeders 10-15 over limit	37.8%
% of speeders 15 or more over limit	8.2%

West Hills:

The sign was placed on Government Way tracking vehicles traveling north bound towards Spokane Falls Community College from October 10th to October 19th. There is concern that the high volume of traffic is speeding through this curve. There were 51,450 vehicles tracked of those 75.3% were traveling over the posted speed limit of 30mph.



Speed Statistics	
Posted	30
Average Speed	33.37
85 th Percentile	38
# Vehicles Tracked	51,450
# Over Limit	38,748
% over the limit	75.3%
% of speeders 1-5 over limit	57.2%
% of speeders 5-10 over limit	34.6%
% of speeders 10-15 over limit	6.9%
% of speeders 15 or more over limit	1.3%