

2012 Mobile Speed Feedback Program

Executive Summary

This report describes data retrieved from each mobile speed feedback sign placed throughout the City of Spokane. The analysis includes:

- Location information and map
- Length of time sign in location
- Number of vehicles tracked by speed sign while in location
- Speed of the 85th percentile*
- Percentage and number of vehicles traveling over the posted speed limit
- Percentage of vehicles traveling 1-5 miles per hour over the speed limit
- Percentage of vehicles traveling 5-10 miles per hour over the speed limit
- Percentage of vehicles traveling 10 or more over the speed limit
- Average speed limit of traffic that were tracked by the mobile speed sign

Overview of 2012 Mobile Speed Feedback Program:

At the beginning of the year each neighborhood council chose where and when the mobile speed signs would be placed in their neighborhood. The locations were chosen based on the perceived problem of speeding at the given locations. The signs were on the schedule to be placed in each location for two weeks (with an additional week for moving of the signs).

Throughout the time that the signs were placed in the neighborhoods there has been experience with vandalism, as well as mechanical complications which caused the schedule to get off from the original neighborhood chosen schedule. During this time signs were only placed for one week.

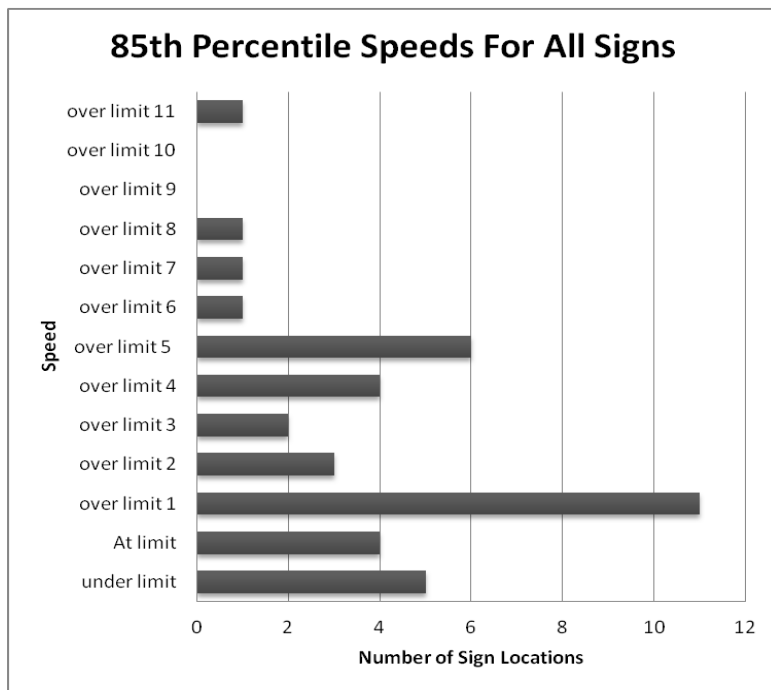
There was also reoccurring complications with the SD cards causing data to be lost. Some did not record any data and others only recorded data for one or two days, sometime less. This is reflected in the individual location reports.

Conclusion:

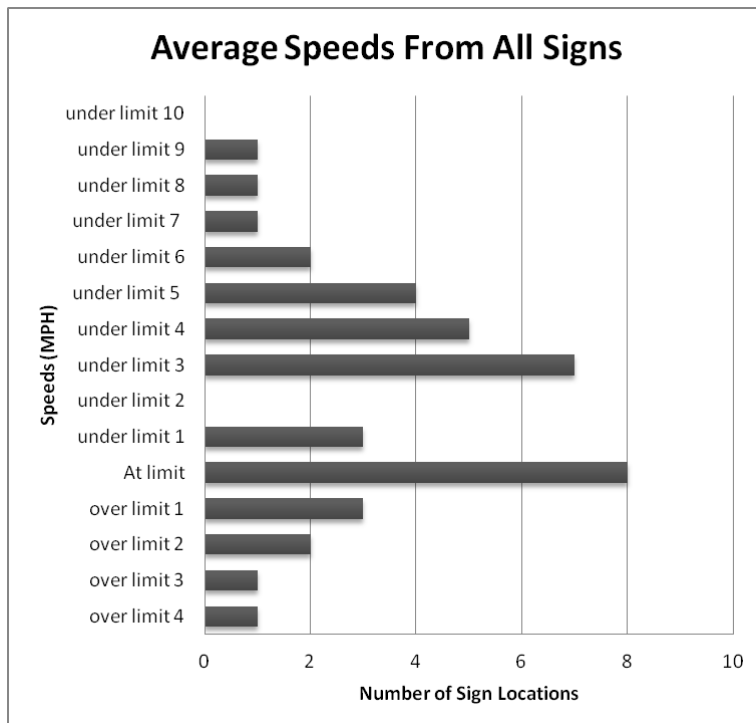
Final analysis shows that the Mobile Speed Feedback Signs seem to be having an impact on the behavior of drivers in most areas that they are placed. Granted it is important to remember that this is an assumption due to the lack of previous speed recordings without the signs. It is possible to assume that if the average speed is close to or is at the posted speed the mobile speed signs may be having an effect on behavior. If the average speed is still much higher than the posted speed than the speed sign may not be having the desired effect.

The following chart describes the 85th percentile speeds recorded from each sign and how many of those were under the limit, at the limit and above the limit from 1 to 11MPH over. From the chart the most common 85th percentile* speed was 1mph over the posted speed limit followed second by 5mph over.

* The 85th percentile speed is the speed at or below which 85 percent of the motorists drive on a given road unaffected by slower traffic or poor weather. This speed indicates the speed that most motorists on the road consider safe and reasonable under ideal conditions. It is a good guideline for the appropriate speed limit for that road.



The chart below describes the average speed recorded from each sign the average speed limit, the majority of the average speeds from the signs were at the limit or under by 3mph. The average speed is the speed at which 50% of the traffic is going. The average speed of traffic was at or below the posted speed limit which is the opposite of the 85th Percentile which showed most people traveling over the limit.



* The 85th percentile speed is the speed at or below which 85 percent of the motorists drive on a given road unaffected by slower traffic or poor weather. This speed indicates the speed that most motorists on the road consider safe and reasonable under ideal conditions. It is a good guideline for the appropriate speed limit for that road.

Recommendations for 2013 Mobile Speed Signs:

It is recommended that for the 2013 mobile speed sign schedule when choosing a location for the speed signs:

- Consider the likelihood of vandalism; if the sign was placed in a location and was vandalized before; choose a different location this year.
- Choose locations with enough right-of-way to be placed; signs are not placed on sidewalks, there needs to be enough space on the street or a waiver needs to be signed in order to have the sign placed on private property.
- Try to diversify your locations; try to have the signs placed in multiple locations over the course of the schedule.
- If requesting a sign near a school; be sure that it is placed during the school year to be most effective.
- Place speed signs where a possible permanent speed sign may be possible to be placed. The mobile signs may help to gather preliminary speed information for obtaining permanent signs.
- Mobile speed signs are a good start where future traffic calming projects requests are proposed.

* The 85th percentile speed is the speed at or below which 85 percent of the motorists drive on a given road unaffected by slower traffic or poor weather. This speed indicates the speed that most motorists on the road consider safe and reasonable under ideal conditions. It is a good guideline for the appropriate speed limit for that road.

Whitman Neighborhood: Pittsburgh St.

The mobile speed sign was placed on Pittsburgh St. just two blocks north of Rogers High School in a residential neighborhood. The speed sign was located in the neighborhood for two weeks but only 5 days were recorded due to SD card error.



Speed Statistics	
Posted	25
Average Speed	20.66
85 th Percentile	25
# Vehicles Tracked	9,351
# Over Limit	1,353
% total speeders	14.5%
% of speeders 1-5 over limit	86.6%
% of speeders 5-10 over limit	1.5%
% of speeders 10-15 over limit	0.9%

East Central: Thor St. /Hartson Ave. Triangle

The mobile speed sign was placed on S. Thor St. and E. Hartson Ave. in the triangle. This is a commercial/residential area with a large amount of traffic traveling on a daily basis. The speed sign was in this location for two and a half weeks. Though this is a commercial area the location is just two blocks west of an elementary school and one block south of a major grocery store.



Speed Statistics	
Posted	30
Average Speed	30.08
85 th Percentile	31
# Vehicles Tracked	249,937
# Over Limit	126,576
% total speeders	50.6
% of speeders 1-5 over limit	61%
% of speeders 5-10 over limit	1.5%
% of speeders 10-15 over limit	0.9%

* The 85th percentile speed is the speed at or below which 85 percent of the motorists drive on a given road unaffected by slower traffic or poor weather. This speed indicates the speed that most motorists on the road consider safe and reasonable under ideal conditions. It is a good guideline for the appropriate speed limit for that road.

Hillyard: Market St. and Columbia Ave.

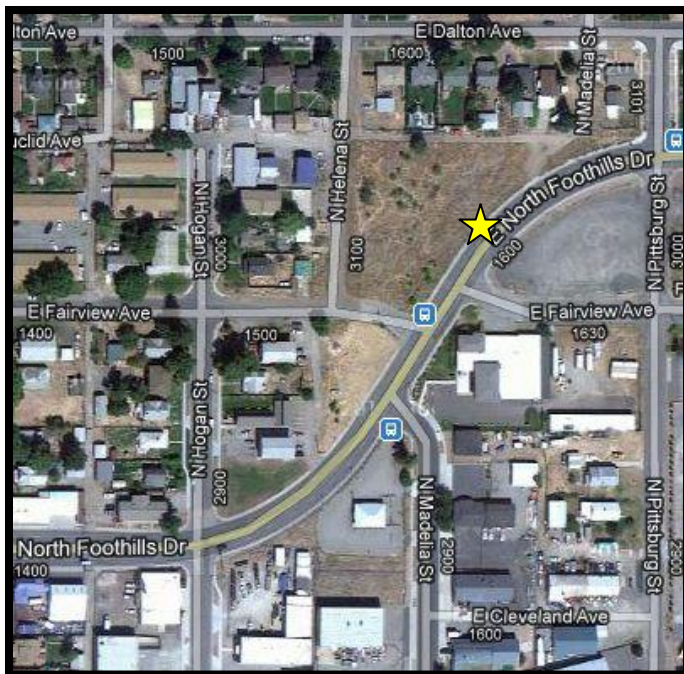
The mobile speed sign was placed on N. Market St. and E. Columbia Ave. This location is about half a block north of the Hillyard Aquatic Center. The speed sign was out for two week but unfortunately the SD card had an error after one day so there was limited data recorded.



Speed Statistics	
Posted	35
Average Speed	29.81
85 th Percentile	33
# Vehicles Tracked	7,562
# Over Limit	402
% total speeders	5.3%
% of speeders 1-5 over limit	76%
% of speeders 5-10 over limit	14.2%
% of speeders 10 and over	9.8%

Logan: North Foothills Dr.

The mobile speed sign was placed on North Foothills Dr. between Pittsburgh St. and Helena St. Due to SD card error there was only 30 minutes worth of data collected. This location is just east of Gonzaga Prep school.



Speed Statistics	
Posted	30
Average Speed	31
85 th Percentile	35
# Vehicles Tracked	102
# Over Limit	61
% total speeders	60%
% of speeders 1-5 over limit	72%
% of speeders 5-10 over limit	25%
% of speeders 10 and over	3%

* The 85th percentile speed is the speed at or below which 85 percent of the motorists drive on a given road unaffected by slower traffic or poor weather. This speed indicates the speed that most motorists on the road consider safe and reasonable under ideal conditions. It is a good guideline for the appropriate speed limit for that road.

East Central: Sprague Ave between Crestline and Lee.

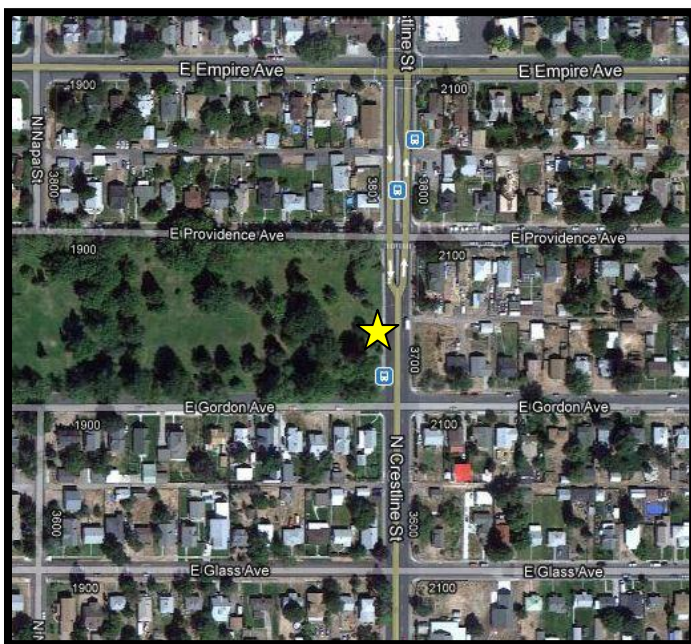
The mobile speed sign was placed on Sprague Ave. between Crestline and Lee in the Spokane International District for two weeks. The sign was facing eastbound traffic.



Speed Statistics	
Posted	30
Average Speed	26.52
85 th Percentile	31
# Vehicles Tracked	125,693
# Over Limit	34,895
% total speeders	27.8%
% of speeders 1-5 over limit	88.6%
% of speeders 5-10 over limit	9.9%
% of speeders 10 and over	1.5%

Bemiss: Crestline St. at Hays Park

The mobile speed sign was placed on Crestline St. at Hays Park, facing southbound traffic. The sign was in this location for 21 days but the SD card had an error after two days.



Speed Statistics	
Posted	20
Average Speed	24
85 th Percentile	31
# Vehicles Tracked	16,818
# Over Limit	11,343
% total speeders	67%
% of speeders 1-5 over limit	38.3%
% of speeders 5-10 over limit	33.5%
% of speeders 10 and over	28.2%

* The 85th percentile speed is the speed at or below which 85 percent of the motorists drive on a given road unaffected by slower traffic or poor weather. This speed indicates the speed that most motorists on the road consider safe and reasonable under ideal conditions. It is a good guideline for the appropriate speed limit for that road.

Minnehaha: Euclid Ave.

The mobile speed sign was placed on Euclid Ave. between Ferrall St. and Freya St., facing westbound traffic. This is a stretch of road that winds and comes right off of a light so that might be why there is not a large number of cars traveling over the posted limit of 30mph. The sign was in this location two weeks but the SD card had an error after ten days.



Speed Statistics	
Posted	30
Average Speed	21.67
85 th Percentile	28
# Vehicles Tracked	55,588
# Over Limit	3,809
% total speeders	7.35%
% of speeders 1-5 over limit	89.1%
% of speeders 5-10 over limit	8.4%
% of speeders 10 and over	2.5%

Chief Garry Park: Marshall Ave.

The mobile speed sign was placed on Marshall Ave. just after Magnolia St. facing westbound traffic. The neighborhood was concerned because they were seeing a significant growth in the number of cut through traffic that was speeding. The cut through traffic appears to be coming from Mission and cutting over to Green St., the neighbors believe it could be students cutting to and from the college. This location is also next to a very large uncontrolled five-way intersection.



Speed Statistics	
Posted	25
Average Speed	22.37
85 th Percentile	27
# Vehicles Tracked	28,941
# Over Limit	7,934
% total speeders	27.41%
% of speeders 1-5 over limit	84.6%
% of speeders 5-10 over limit	13.4%
% of speeders 10 and over	2%

* The 85th percentile speed is the speed at or below which 85 percent of the motorists drive on a given road unaffected by slower traffic or poor weather. This speed indicates the speed that most motorists on the road consider safe and reasonable under ideal conditions. It is a good guideline for the appropriate speed limit for that road.

Hillyard: Market St. and Bismark Ave.

The mobile speed sign was placed at Market St. and Bismark Ave for 2 weeks. The sign was placed facing northbound traffic going by the Harmon Field.



Speed Statistics	
Posted	30
Average Speed	30.24
85 th Percentile	34
# Vehicles Tracked	116,579
# Over Limit	74,775
% total speeders	50.25%
% of speeders 1-5 over limit	72.1%
% of speeders 5-10 over limit	22.2%
% of speeders 10 and over	5.7%

Nevada Lidgerwood: Addison St.

The mobile speed sign was placed on Addison St. in between Everett Ave. and Sanson Ave. This is just past Rowan Elementary School.



Speed Statistics	
Posted	25
Average Speed	24.11
85 th Percentile	30
# Vehicles Tracked	6626
# Over Limit	4632
% total speeders	43.43%
% of speeders 1-5 over limit	%
% of speeders 5-10 over limit	%
% of speeders 10 and over	%

* The 85th percentile speed is the speed at or below which 85 percent of the motorists drive on a given road unaffected by slower traffic or poor weather. This speed indicates the speed that most motorists on the road consider safe and reasonable under ideal conditions. It is a good guideline for the appropriate speed limit for that road.

Emerson Garfield: Garland Ave. and Lincoln St.

The mobile speed sign was placed at Garland Ave. and Lincoln St. it was in this location for two weeks, but there was a card error after just 2 hours. The sign was located in front of the Rocket Bakery facing eastbound traffic.



Speed Statistics	
Posted	25
Average Speed	21.91
85 th Percentile	26
# Vehicles Tracked	38,070
# Over Limit	7,062
% total speeders	18.55%
% of speeders 1-5 over limit	82.14%
% of speeders 5-10 over limit	15.14%
% of speeders 10 and over	2.72%

Chief Garry Park: Union St. near Felts Field

The mobile speed sign was placed on Union Ave. near Koren Ln. This was a call in location from a concerned neighbor who has seen excessive speeds on Union St. where a high number of children live. The neighbor who called in for the speed sign stated that the sign was off compared to his speedometer. It may be necessary to increase the 85th percentile speed as well as the average speed. The sign was in this location for 11 days.



Speed Statistics	
Posted	25
Average Speed	21.61
85 th Percentile	27
# Vehicles Tracked	8,254
# Over Limit	1,823
% total speeders	22.08%
% of speeders 1-5 over limit	70.3%
% of speeders 5-10 over limit	22.3%
% of speeders 10 and over	7.4%

* The 85th percentile speed is the speed at or below which 85 percent of the motorists drive on a given road unaffected by slower traffic or poor weather. This speed indicates the speed that most motorists on the road consider safe and reasonable under ideal conditions. It is a good guideline for the appropriate speed limit for that road.

Whitman Neighborhood: Helena St. & Rowan Ave.

The mobile speed sign was placed on Helena St. and Rowan Ave for 2 weeks. This road ran on the north side of Rowan Elementary.



Speed Statistics	
Posted	30
Average Speed	25.36
85 th Percentile	31
# Vehicles Tracked	102,304
# Over Limit	17,597
% total speeders	17.2%
% of speeders 1-5 over limit	97.44%
% of speeders 5-10 over limit	1.58%
% of speeders 10 and over	.98%

Logan Neighborhood: Nevada St. and Euclid Ave.

The mobile speed sign was placed on Nevada St. just south of Euclid Ave. for 2 weeks. The sign was chosen to be in this location because of Gonzaga Prep. School.



Speed Statistics	
Posted	30
Average Speed	31.28
85 th Percentile	35
# Vehicles Tracked	120,984
# Over Limit	75,547
% total speeders	62.44%
% of speeders 1-5 over limit	68.83%
% of speeders 5-10 over limit	27.07%
% of speeders 10 and over	4.10%

* The 85th percentile speed is the speed at or below which 85 percent of the motorists drive on a given road unaffected by slower traffic or poor weather. This speed indicates the speed that most motorists on the road consider safe and reasonable under ideal conditions. It is a good guideline for the appropriate speed limit for that road.

East Central: Sprague Ave between Crestline St. and Lee St.

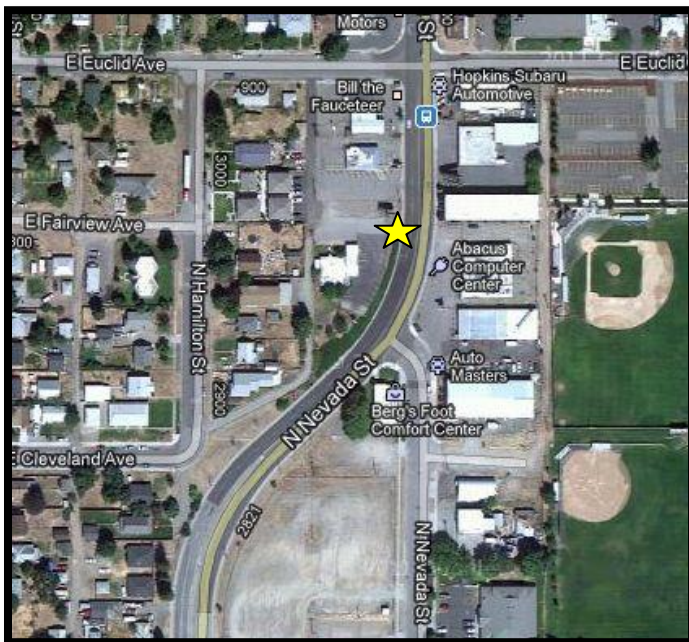
The mobile speed sign was placed on Sprague Ave. between Crestline St. and Lee St. in the Spokane International District for two weeks, facing eastbound traffic. This is a commercial area with a high volume of traffic.



Speed Statistics	
Posted	30
Average Speed	26.82
85 th Percentile	32
# Vehicles Tracked	83,846
# Over Limit	19,601
% total speeders	23.37%
% of speeders 1-5 over limit	82.43%
% of speeders 5-10 over limit	16.26%
% of speeders 10 and over	1.31%

Logan Neighborhood: Nevada St. and Euclid Ave.

The mobile speed sign was placed on Nevada St. just south of Euclid Ave. it was in this location for 2 weeks, facing southbound traffic. This location is near Gonzaga Prep., there is a high number of traffic on Nevada.



Speed Statistics	
Posted	30
Average Speed	31.21
85 th Percentile	35
# Vehicles Tracked	135,857
# Over Limit	85,609
% total speeders	63.01%
% of speeders 1-5 over limit	65.40%
% of speeders 5-10 over limit	32.22%
% of speeders 10 and over	2.38 %

* The 85th percentile speed is the speed at or below which 85 percent of the motorists drive on a given road unaffected by slower traffic or poor weather. This speed indicates the speed that most motorists on the road consider safe and reasonable under ideal conditions. It is a good guideline for the appropriate speed limit for that road.

District Two

Comstock: 43rd Ave and Arthur St.

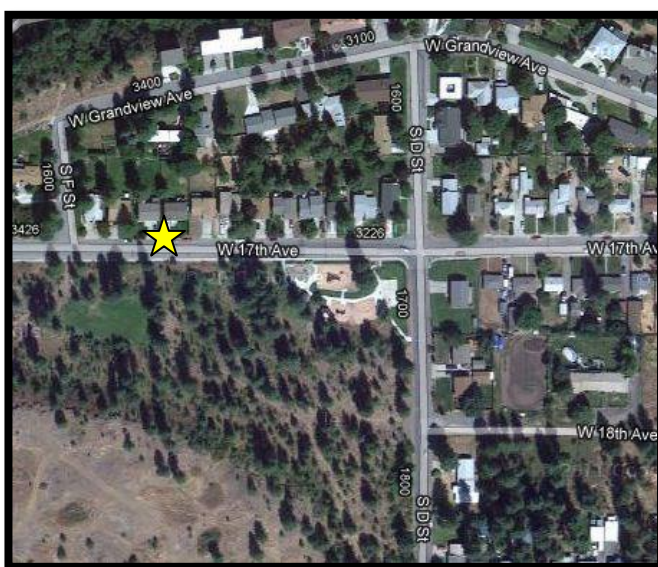
The mobile speed sign was placed at 43rd and Arthur in this residential area facing eastbound traffic. This location is just east of busy the Rocket Bakery and just south of Manito Golf and Country Club. The sign was in the neighborhood for one week, there was a SD card error and the sign only recorded about 18 hours of data.



Speed Statistics	
Posted	25
Average Speed	20.44
85 th Percentile	26
# Vehicles Tracked	1,488
# Over Limit	240
% total speeders	19%
% of speeders 1-5 over limit	80.4%
% of speeders 5-10 over limit	18.3%
% of speeders 10 and over	1.3%

Grandview/Thorpe: 17th Avenue just west of Grandview Thorpe Park

The mobile speed sign was placed on 17th Avenue just west of Grandview Park in a residential area. The speed sign was located in this location for 8 days.

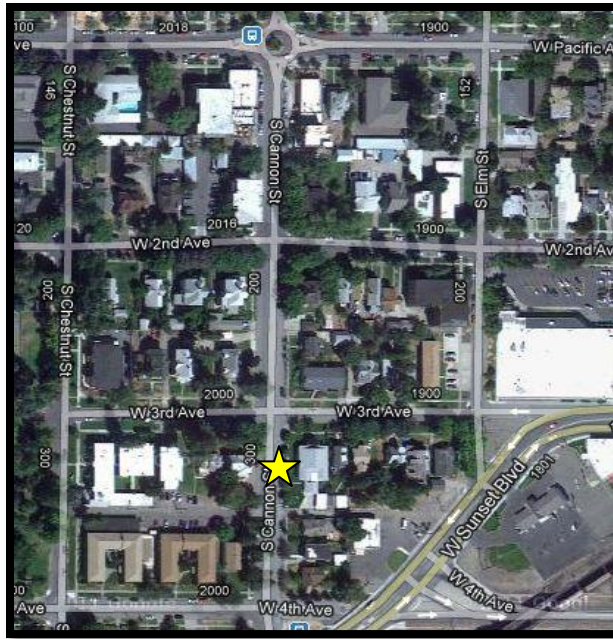


Speed Statistics	
Posted	25
Average Speed	20.44
85 th Percentile	26
# Vehicles Tracked	11,095
# Over Limit	2,314
% total speeders	19%
% of speeders 1-5 over limit	78.1%
% of speeders 5-10 over limit	17.3%
% of speeders 10 and over	4.6%

* The 85th percentile speed is the speed at or below which 85 percent of the motorists drive on a given road unaffected by slower traffic or poor weather. This speed indicates the speed that most motorists on the road consider safe and reasonable under ideal conditions. It is a good guideline for the appropriate speed limit for that road.

Browne's Addition: 3rd Ave. and Cannon St.

The mobile speed sign was placed just north of 3rd Ave. on Cannon St. just entering Browne's Addition from the south, facing northbound traffic. This is a residential area that feeds into an area with increased activity due to the change of use from residential into neighborhood retail on the corner of Cannon St. and Pacific Ave. The speed sign was located in this area for 12 days.



Speed Statistics	
Posted	25
Average Speed	18.77
85 th Percentile	24
# Vehicles Tracked	16,879
# Over Limit	1,731
% total speeders	9.7%
% of speeders 1-5 over limit	89.5%
% of speeders 5-10 over limit	9.1%
% of speeders 10 and over	1.4%

Southgate: 42nd Ave and Freya St

The mobile speed sign was placed on Freya St approximately at 42nd facing northbound traffic. The speed sign was located in this area for two and a half weeks. This was an area where there was vandalism last year as well as this year causing extensive repairs to be done.

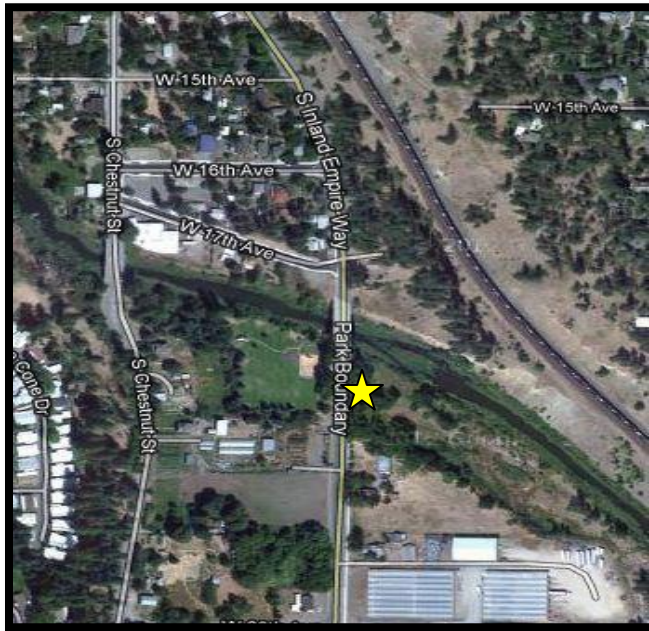


Speed Statistics	
Posted	30
Average Speed	31.91
85 th Percentile	38
# Vehicles Tracked	107,315
# Over Limit	78,469
% total speeders	73%
% of speeders 1-5 over limit	51.1%
% of speeders 5-10 over limit	40.1%
% of speeders 10 and over	8.8%

* The 85th percentile speed is the speed at or below which 85 percent of the motorists drive on a given road unaffected by slower traffic or poor weather. This speed indicates the speed that most motorists on the road consider safe and reasonable under ideal conditions. It is a good guideline for the appropriate speed limit for that road.

Peaceful Valley: South Inland Empire Way

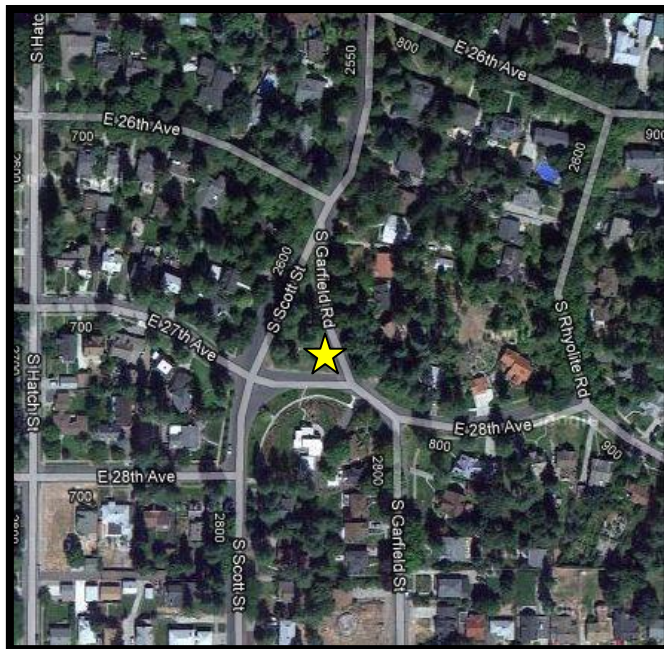
The mobile speed sign was placed on South Inland Empire Way facing southbound traffic. The speed sign was located in this area for two and a half weeks.



Speed Statistics	
Posted	35
Average Speed	30.99
85 th Percentile	36
# Vehicles Tracked	88,039
# Over Limit	14,252
% total speeders	16.2%
% of speeders 1-5 over limit	89.7%
% of speeders 5-10 over limit	-
% of speeders 10 and over	10.3%

Rockwood: S. Scott St and Garfield St. Olmstead Park Triangle

The mobile speed sign was placed on S. Scott St. and Garfield St. at the triangle Olmstead Park facing northbound traffic. This is a residential area that feeds out to residential retail to the south. The speed sign was located in this area for twenty-six days.

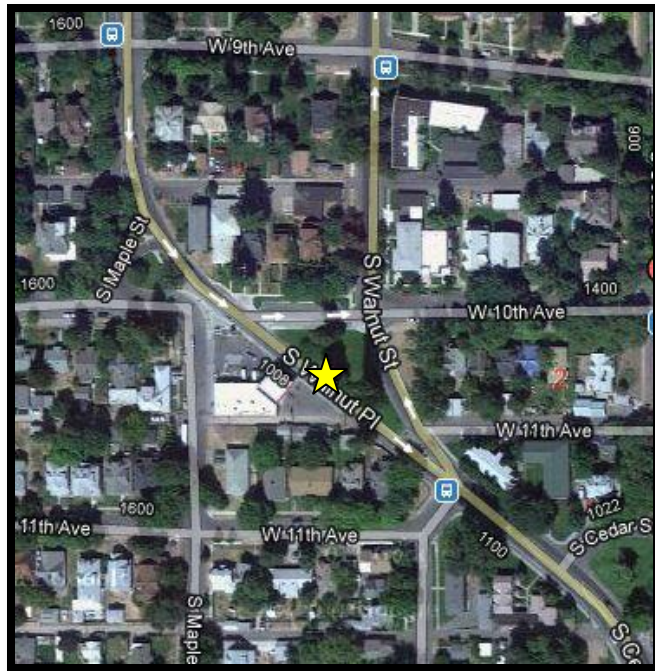


Speed Statistics	
Posted	25
Average Speed	21.73
85 th Percentile	25
# Vehicles Tracked	40,200
# Over Limit	5,260
% total speeders	13.1%
% of speeders 1-5 over limit	86.2%
% of speeders 5-10 over limit	12.1%
% of speeders 10 and over	1.7%

* The 85th percentile speed is the speed at or below which 85 percent of the motorists drive on a given road unaffected by slower traffic or poor weather. This speed indicates the speed that most motorists on the road consider safe and reasonable under ideal conditions. It is a good guideline for the appropriate speed limit for that road.

Cliff Cannon: Tenth and Walnut (grass triangle)

The mobile speed sign was placed on Tenth Ave and Walnut St at the grass triangle facing northbound traffic for two weeks. This is a residential area with a large number of multifamily dwelling units as well as near a convenience store where pedestrians cross to get to often causing unsafe interactions with speeding vehicles.



Speed Statistics	
Posted	30
Average Speed	29.04
85 th Percentile	34
# Vehicles Tracked	113,881
# Over Limit	50,482
% total speeders	44.3%
% of speeders 1-5 over limit	78.3%
% of speeders 5-10 over limit	20.5%
% of speeders 10 and over	1.2%

Manito/Cannon Hill: 25th Ave. between Tekoa St. & Division St.

The mobile speed sign was placed on 25th Ave. between Tekoa St. and Division St. next to upper Manito Park. The speed sign was located in this area for two weeks.



Speed Statistics	
Posted	25
Average Speed	21.9
85 th Percentile	26
# Vehicles Tracked	55,703
# Over Limit	11,195
% total speeders	20.09%
% of speeders 1-5 over limit	90.4%
% of speeders 5-10 over limit	7.3%
% of speeders 10 and over	2.3%

* The 85th percentile speed is the speed at or below which 85 percent of the motorists drive on a given road unaffected by slower traffic or poor weather. This speed indicates the speed that most motorists on the road consider safe and reasonable under ideal conditions. It is a good guideline for the appropriate speed limit for that road.

Latah/Hangman: Kip Ln and Katelyn Ln

The mobile speed sign was placed at Kip and Katlyn Street in the Latah Valley due to a call in request. This was a gated community and not generally an ideal location for the speed signs.



Speed Statistics	
Posted	15
Average Speed	12.58
85 th Percentile	13
# Vehicles Tracked	1180
# Over Limit	60
% total speeders	5.1%
% of speeders 1-5 over limit	90%
% of speeders 5-10 over limit	6.7%
% of speeders 10 and over	3.3%

Manito/Cannon Hill: 25th Ave. just east of Browne St.

The mobile speed sign was placed on 25th Ave. between Tekoa St and Division St. next to the upper Manito Park. The speed sign was located in this area for two weeks.



Speed Statistics	
Posted	25
Average Speed	21.91
85 th Percentile	26
# Vehicles Tracked	38,070
# Over Limit	7,062
% total speeders	18.55%
% of speeders 1-5 over limit	82.14%
% of speeders 5-10 over limit	15.14%
% of speeders 10 and over	2.72%

* The 85th percentile speed is the speed at or below which 85 percent of the motorists drive on a given road unaffected by slower traffic or poor weather. This speed indicates the speed that most motorists on the road consider safe and reasonable under ideal conditions. It is a good guideline for the appropriate speed limit for that road.

Rockwood Neighborhood: Rockwood Blvd and 12th Ave.

The mobile speed sign was placed on Rockwood Blvd and 12th Ave. by the triangle park, the sign was in the location for 2 weeks. The speed limit is 25 mph, from the data it shows that the 85th percentile was traveling a bit faster at 32mph. Also a larger percentage of the speeders were traveling 5-10mph over the speed limit.

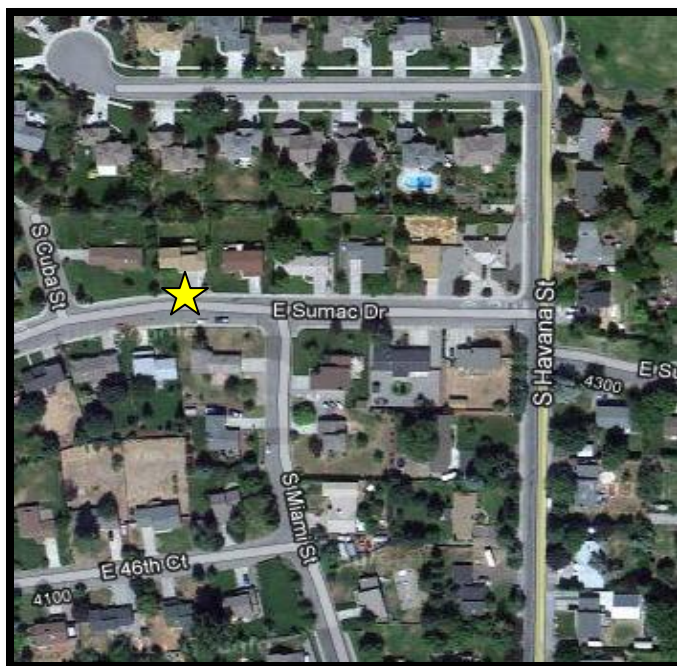


Speed Statistics	
Posted	25
Average Speed	28.32
85 th Percentile	32
# Vehicles Tracked	46,478
# Over Limit	36,465
% total speeders	78.45%
% of speeders 1-5 over limit	51.75%
% of speeders 5-10 over limit	43.17%
% of speeders 10 and over	5.08%

Southgate Neighborhood: 4100 Block of Sumac Drive

The mobile speed sign was placed on the 4100 block of Sumac Dr. This location was in a residential subdivision, Sumac Dr. this is one of the major inlets into the neighborhood and also leads to Havana St.

where a park is located so there are people that frequently walk on Sumac Dr. to get to the park.



Speed Statistics	
Posted	25
Average Speed	19.47
85 th Percentile	25
# Vehicles Tracked	6938
# Over Limit	767
% total speeders	11.05%
% of speeders 1-5 over limit	87.2%
% of speeders 5-10 over limit	8.1%
% of speeders 10 and over	4.7%

* The 85th percentile speed is the speed at or below which 85 percent of the motorists drive on a given road unaffected by slower traffic or poor weather. This speed indicates the speed that most motorists on the road consider safe and reasonable under ideal conditions. It is a good guideline for the appropriate speed limit for that road.

Comstock Neighborhood: 33rd and Manito Blvd

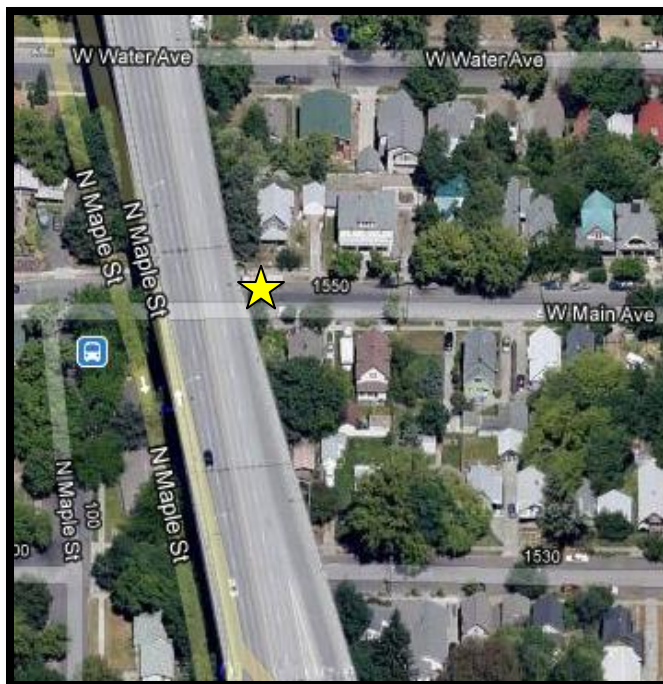
The mobile speed sign was placed near the intersection of 33rd Ave. and Manito Blvd. This location is near Sacajawea Middle School and very close to Manito Blvd. This is also an area that leads to Hart Field.



Speed Statistics	
Posted	25
Average Speed	19.96
85 th Percentile	25
# Vehicles Tracked	28,837
# Over Limit	4201
% total speeders	14.57%
% of speeders 1-5 over limit	83.53%
% of speeders 5-10 over limit	14.92%
% of speeders 10 and over	1.55%

Peaceful Valley Neighborhood: Main Ave. (under the Maple St. Bridge)

The mobile speed sign was placed in Peaceful Valley under the Maple St. Bridge where Main Ave runs under the bridge. The neighborhood asked to have the sign closer to the entrance into Peaceful Valley but due to jersey barriers there was not enough room.



Speed Statistics	
Posted	25
Average Speed	21.99
85 th Percentile	26
# Vehicles Tracked	4,739
# Over Limit	857
% total speeders	18.08%
% of speeders 1-5 over limit	80.86%
% of speeders 5-10 over limit	17.39%
% of speeders 10 and over	1.75%

* The 85th percentile speed is the speed at or below which 85 percent of the motorists drive on a given road unaffected by slower traffic or poor weather. This speed indicates the speed that most motorists on the road consider safe and reasonable under ideal conditions. It is a good guideline for the appropriate speed limit for that road.

Southgate Neighborhood: Crestline and 53rd Ave.

The mobile speed sign was placed on 53rd and Crestline in the Southgate Neighborhood. Crestline St. for this stretch is very wide and lacks sidewalks on either side of the street.



Speed Statistics	
Posted	25
Average Speed	24.63
85 th Percentile	31
# Vehicles Tracked	38,917
# Over Limit	19,661
% total speeders	50.52%
% of speeders 1-5 over limit	57.77%
% of speeders 5-10 over limit	37.12%
% of speeders 10 and over	5.11%

Cliff/Cannon Neighborhood: 14th Ave. & Wall St

The mobile sign was requested to be placed in the grass sidewalk buffer on 14th Ave and Wall St facing westbound traffic traveling towards Lincoln St. The sign was placed for 2 weeks but there were complications with the data due to the battery dying and not working in the night time (lack of charge from the solar panels). The sign was only able to pick up two full days of data from the SD card.



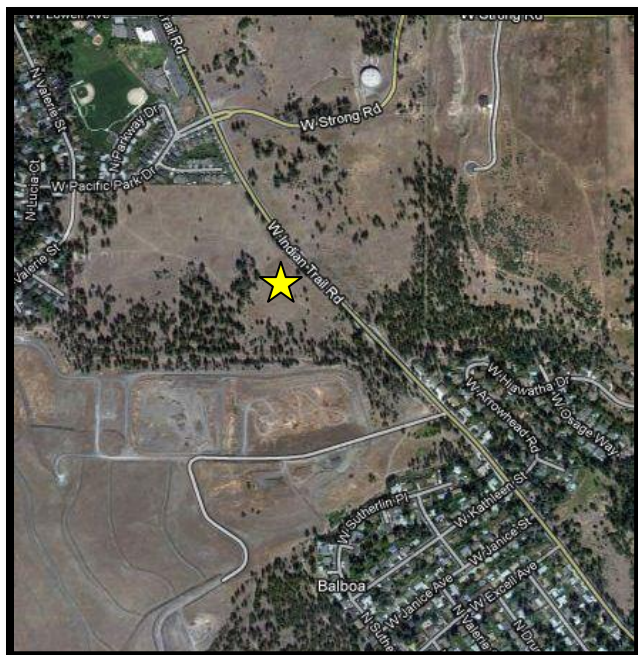
Speed Statistics	
Posted	25
Average Speed	25
85 th Percentile	29.14
# Vehicles Tracked	6,714
# Over Limit	2,925
% total speeders	43.56%
% of speeders 1-5 over limit	71.32%
% of speeders 5-10 over limit	26.94%
% of speeders 10 and over	1.74%

* The 85th percentile speed is the speed at or below which 85 percent of the motorists drive on a given road unaffected by slower traffic or poor weather. This speed indicates the speed that most motorists on the road consider safe and reasonable under ideal conditions. It is a good guideline for the appropriate speed limit for that road.

District Three

North Indian Trail: North Indian Trail Rd. between Strong Rd and Kathleen St.

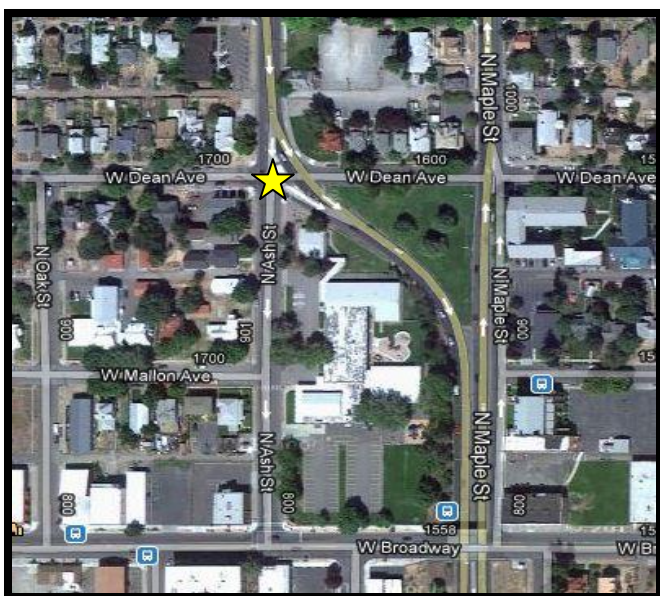
The mobile speed sign was placed on North Indian Trail Road between Strong Rd and Kathleen St facing northbound traffic. Surrounding this stretch of road are residential developments. The speed sign was in this location for 20 days.



Speed Statistics	
Posted	35
Average Speed	35.49
85 th Percentile	39
# Vehicles Tracked	141,943
# Over Limit	68,158
% total speeders	13.1%
% of speeders 1-5 over limit	80.3%
% of speeders 5-10 over limit	-
% of speeders 10 and over	19.7%

West Central: Southeast corner of Dean Ave. and Ash St.

The mobile speed sign was placed on the corner of Dean Ave. and Ash St. facing southbound traffic. This location is just before the Maple St. Bridge and it right next to Bryant School. The speed sign was in this location for 10 days.



Speed Statistics	
Posted	30
Average Speed	29.4
85 th Percentile	33
# Vehicles Tracked	90,625
# Over Limit	35,091
% total speeders	38.7%
% of speeders 1-5 over limit	78%
% of speeders 5-10 over limit	20.2%
% of speeders 10 and over	1.8%

* The 85th percentile speed is the speed at or below which 85 percent of the motorists drive on a given road unaffected by slower traffic or poor weather. This speed indicates the speed that most motorists on the road consider safe and reasonable under ideal conditions. It is a good guideline for the appropriate speed limit for that road.

Balboa/South Indian Trail: Woodside Ave. and Alberta St.

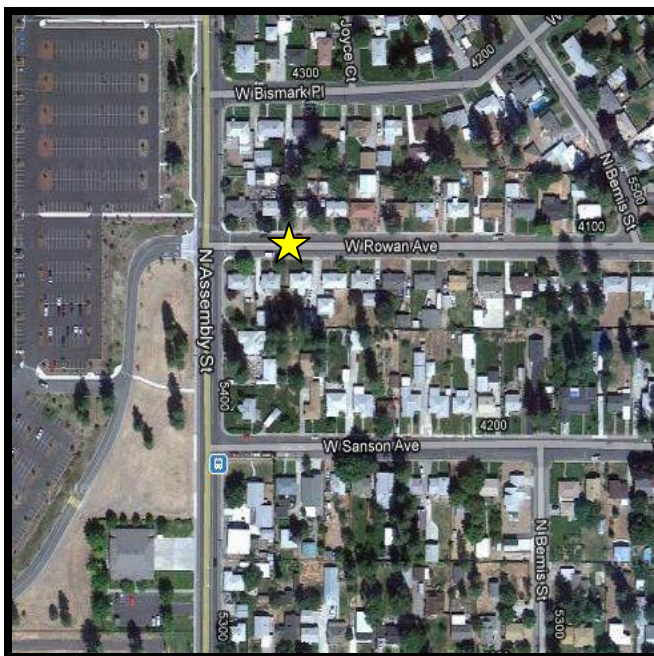
The mobile speed sign was placed at Woodside Ave. and Alberta St. in a residential neighborhood just north of Salk Middle School facing westbound traffic. The speed sign was in the neighborhood location for one week.



Speed Statistics	
Posted	25
Average Speed	25.19
85 th Percentile	28
# Vehicles Tracked	9,956
# Over Limit	4,641
% total speeders	38.7%
% of speeders 1-5 over limit	82.7%
% of speeders 5-10 over limit	16.7%
% of speeders 10 and over	.6%

Northwest: Rowan between Assembly/Driscoll

The mobile speed sign was placed at Rowan Ave between Assembly St. and Bemis St. in a residential neighborhood just east of the Dwight Merkel Sports Complex. The speed sign was in this location for two weeks.



Speed Statistics	
Posted	30
Average Speed	23.7
85 th Percentile	28
# Vehicles Tracked	4,832
# Over Limit	231
% total speeders	20.91%
% of speeders 1-5 over limit	78%
% of speeders 5-10 over limit	20.3%
% of speeders 10 and over	1.7%

* The 85th percentile speed is the speed at or below which 85 percent of the motorists drive on a given road unaffected by slower traffic or poor weather. This speed indicates the speed that most motorists on the road consider safe and reasonable under ideal conditions. It is a good guideline for the appropriate speed limit for that road.

North Hill: Garland Ave and Stevens

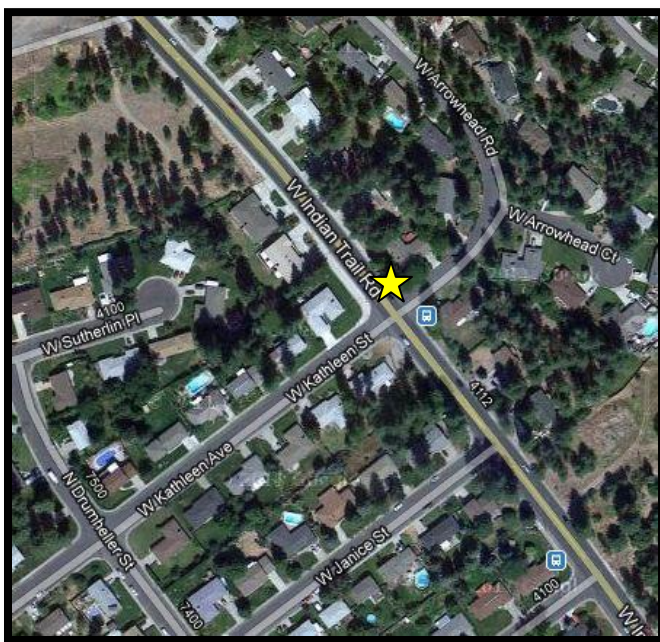
The mobile speed sign was placed on Garland Ave. just east of Stevens facing westbound traffic. The speed sign was in the neighborhood for two weeks.



Speed Statistics	
Posted	30
Average Speed	27.04
85 th Percentile	31
# Vehicles Tracked	63,544
# Over Limit	13,041
% total speeders	20.5%
% of speeders 1-5 over limit	87.8%
% of speeders 5-10 over limit	10.7%
% of speeders 10 and over	1.5%

North Indian Trail: North Indian Trail Rd. & Kathleen St.

The mobile speed sign was placed on North Indian Trail Road between Strong Rd and Kathleen St facing northbound traffic. Surrounding this stretch of road are residential developments. The speed sign was in the neighborhood for two weeks.



Speed Statistics	
Posted	35
Average Speed	36.76
85 th Percentile	40
# Vehicles Tracked	89,211
# Over Limit	59,588
% total speeders	67%
% of speeders 1-5 over limit	77%
% of speeders 5-10 over limit	20.8%
% of speeders 10 and over	1.5%

* The 85th percentile speed is the speed at or below which 85 percent of the motorists drive on a given road unaffected by slower traffic or poor weather. This speed indicates the speed that most motorists on the road consider safe and reasonable under ideal conditions. It is a good guideline for the appropriate speed limit for that road.

Emerson Garfield: Post St. and Alice Ave.

The mobile speed was placed on Post St. and Alice Ave. for two weeks. The sign was facing southbound traffic.



Speed Statistics	
Posted	30
Average Speed	30.75
85 th Percentile	35
# Vehicles Tracked	69,949
# Over Limit	40,867
% total speeders	58.42%
% of speeders 1-5 over limit	66.2%
% of speeders 5-10 over limit	30.3%
% of speeders 10 and over	3.5%

* The 85th percentile speed is the speed at or below which 85 percent of the motorists drive on a given road unaffected by slower traffic or poor weather. This speed indicates the speed that most motorists on the road consider safe and reasonable under ideal conditions. It is a good guideline for the appropriate speed limit for that road.