

2022 ANNUAL REPORT



SPOKANE
PUBLIC LIBRARY

spokanelibrary.org

HIGHLIGHTS OF THE YEAR 2022

This was a year of reconnection. As the community and the world emerged from the pandemic, the Library system resumed normal operations, creating space and opportunities for a population that sought togetherness.

More Staff Hired

The Library added 30% new staff in 2022, to ramp up for new locations opening, extended hours, and to bring the vision of a 21st Century Library to life. The Library added specialized staff such as a youth environmental educator, youth arts educator, adult current affairs specialist and a writing education specialist. We also added a special events coordinator to better serve those using our expanded event spaces.



Events Resume

The community sought reconnection at in-person events including 'When Freedom of

Expression is at Risk,' a conversation with former Boundary County Library Director Kimber Glidden who resigned after censorship pressures. Other events included Lilac City Live, Silent Writing parties, Indigiqueer Celebration, and youth programs like Tiny Terrariums, Space Science, and Read to a Therapy Dog and more.

Ongoing Bond Construction

South Hill and Indian Trail closed in November 2021 to prepare for renovation and were closed for the duration of 2022.



A Greener Future

Electric Vehicle (EV) charging stations were installed at The Hive® and Central Library. The Spokane Regional Transportation Council (SRTC) in partnership with Avista and local jurisdictions in Spokane County received a \$2,500,000 grant from the Washington State Department of Commerce to install electric vehicle charging regionally.



33 Artists Market

Nearly 600 people visited The Hive® in November for the first-ever 33 Artists Market. Artists-In-Residence from The Hive as well as regional artists were able to display and sell their pieces and create economic vibrancy prior to the holiday season.



Social Services Team

This year, Spokane Public Library joined a growing number of libraries nationwide in adding a social worker to the staff. The Welcome Team places interns from Eastern Washington University's social work program at the Library to connect individuals with resources. A newly

created position for a Social Services Manager with a Master of Social Work supervises the internship hours.

Deepening Partnership with Spokane Public Schools

Spokane Public Library began to manage a central collection that spans across all SPS middle schools and public libraries increasing the quality and size of the collection while stretching the public's dollar.



A Farm-to-Table Vision

At Shadle Park Library, an empty garden plot transformed into a thriving educational space throughout 2022. Juan Juan Moses, Community Educator and Master Gardener, cultivated both crops and partnerships with Inland Empire Garden Club, WSU Master Gardeners and Master Composters, Vets on the Farm, Water Wise Spokane, Skyhawks Camps, and more.



CENTRAL LIBRARY GRAND OPENING

After a two-year renovation and pandemic closures, Central Library reopened on July 11, fully transformed into a 21st century library.

The enhanced space includes Media Studios, a Business Lab, the Inland Northwest Special Collections, KYRS radio station, New Leaf Café, River Rumpus Children's Playspace, and meeting spaces packed with events, including the Social Stair and the 300-person capacity nx^wyx^wyetk^w Hall.

MEDIA STUDIOS BY THE NUMBERS (July-December 2022)

294 Podcast Studio Sessions

168 Self-Recording Sessions

228 Video Studio Sessions

138 Video Educator Sessions



KYRS Radio now broadcasts from their studio on the 3rd floor of Central in the Media Studios. Tune in at 88.1/92.3 FM.

BRINGING HIGH-END MEDIA PRODUCTION TO CENTRAL LIBRARY

Getting access to high-end production equipment and facilities can be cost-prohibitive for musicians and creatives, but not anymore in Spokane. With the opening of the Media Studios in Central Library, anyone with a vision and a dream can record and produce on cutting edge equipment for free.



DIVERSITY, EQUITY, & INCLUSION

The Library continued to deepen internal work on Diversity, Equity, and Inclusion in 2022.

- Staff at all levels met regularly to take a deep dive into Racial Equity Principles with DEI consultant Roo Ramos.

- Staff received a monthly DEI newsletter educating and informing staff on DEI issues and learning opportunities.
- Staff read and discussed a selection of DEI-related books including: *Disability Visibility*, *Gender: Your Guide*, *Evicted*, and *This Chair Rocks*.

2022

BY THE NUMBERS

TOTAL LIBRARY VISITORS **629,389**

1,172,466

Items Checked Out

551,621 DIGITAL +
620,845 PHYSICAL



622
Music Lessons

DIGITAL SERVICES USED

eBooks **202,930**

Audiobooks **185,614**

Videos **116,200**

Music **25,343**

Magazines **21,534**



1,019

Museum Passes Borrowed



150,767

Database Searches



41,117

YouTube views



356

1-on-1 Business Consults



ARTISTS-IN-RESIDENCE AT THE HIVE®

2,510

Laptops Checked Out

45,924

hours of computer usage



1

New Leaf Café at Central Library



1

new local music streaming platform

25,165

new library card holders

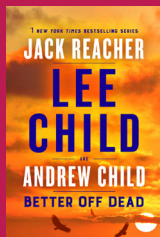
60,000

hours of meeting room usage

7

NEW LIBRARY CARD DESIGNS

TOP CIRCULATED TITLES



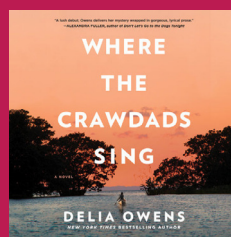
Fiction



Non-Fiction



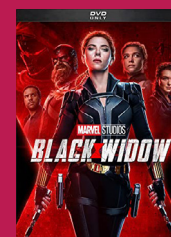
eBook



eAudiobook



Young Adult



DVD