

**SPECIAL MEETING NOTICE/AGENDA OF THE
SPOKANE CITY COUNCIL**

**MEETING OF THURSDAY, MARCH 26, 2026,
11:00 A.M. – CITY COUNCIL CHAMBERS**

A quorum of the Spokane City Council will be present for a special study session at **11:00 A.M. on Thursday, March 26, 2026**, in City Council Chambers - City Hall 808 W. Spokane Falls Blvd.

The meeting will be conducted in a study session format and will be open to the public. No legislative action will be taken. No public testimony will be taken, and discussion will be limited to appropriate officials and staff.

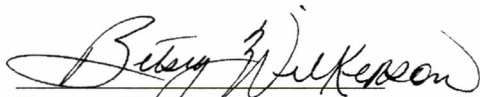
Executive Session

At any time during or after the Special Meeting, the City Council may choose to adjourn into Executive Session for the purpose of discussing privileged legal matters. This portion of the meeting would be closed to the public pursuant to RCW 42.30.110.


Agenda:

- Discussion with Avista regarding the impacts, approach, and process related to Large Load / Data Center requests

AMERICANS WITH DISABILITIES ACT (ADA) INFORMATION: The City of Spokane is committed to providing equal access to its facilities, programs and services for persons with disabilities. The Council Chambers in the lower level of Spokane City Hall, 808 W. Spokane Falls Blvd., is wheelchair accessible and also is equipped with an infrared assistive listening system for persons with hearing loss. Headsets may be checked out (upon presentation of picture I.D.) through the meeting organizer. Individuals requesting reasonable accommodations or further information may call, write, or email Human Resources at 509.625.6373, 808 W. Spokane Falls Blvd., Spokane, WA, 99201; or ddecorde@spokanecity.org. Persons who are deaf or hard of hearing may contact Human Resources through the Washington Relay Service at 7-1-1. Please contact us forty-eight (48) hours before the meeting date.



Betsy Wilkerson
Council President



Terri L. Pfister
Spokane City Clerk

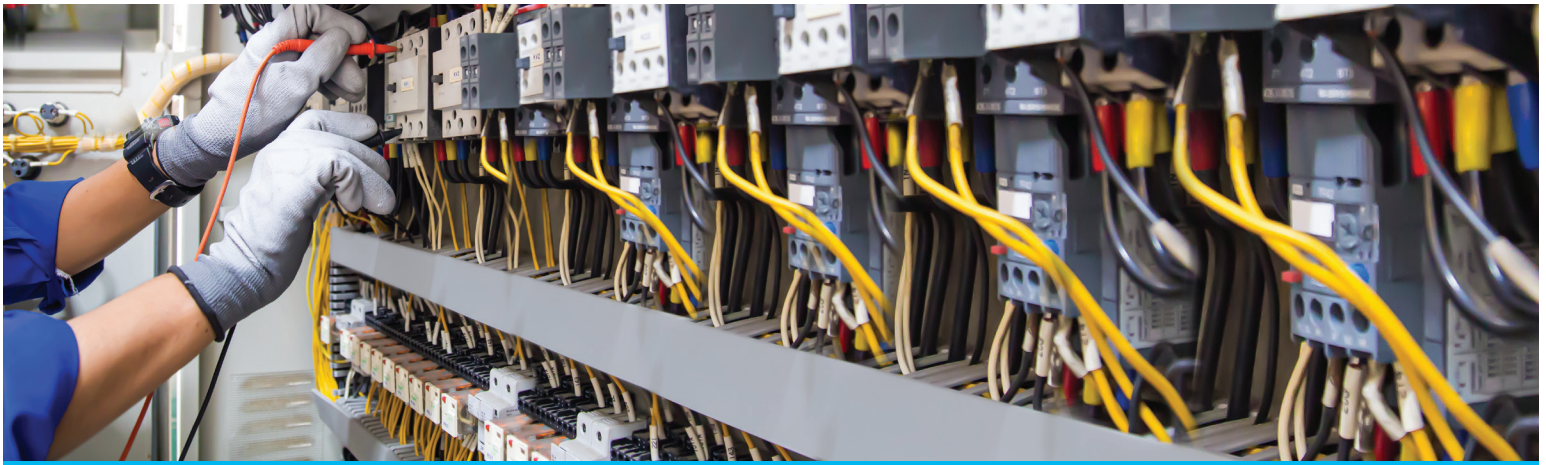


Large Load Service Request Guide

At Avista, we understand the unique challenges faced by our large and complex commercial, industrial, and business customers in managing power demands and achieving operational efficiency. That's why our Business Services Team is dedicated to partnering with you to develop tailored solutions for your projects. We collaborate closely—planning and addressing your specific power load questions and requests—to ensure your needs are quickly and accurately met. With a commitment to safe, efficient, and reliable power delivery, Avista is here to help you power your business with confidence.

Large Load Request Process Overview (Any Load Request Size Exceeding 1.5 MVA)

1 Application 30 Days	2 Scoping 30 Days	3 Study 30 – 180 Days	4 Review 30 Days	5 Execute
<ul style="list-style-type: none"> Fill out Large Load Request Application, available at myavista.com/about-us/large-load-service-request. Avista will provide notification within 3 business days of receiving the application. 	<ul style="list-style-type: none"> Prepare your project overview information and questions for the scoping meeting. Avista Large Power Solution Team will provide you answers and guide you to the next step. 	<ul style="list-style-type: none"> You will have 30 days after the scoping meeting to commit to study agreement. Please refer to the "Required Study Details" table below for information. 	<ul style="list-style-type: none"> Any material changes to the original study input will require a new study if Avista is able to provide service. You will have 30 days to decide whether to proceed with service agreement if Avista is able to provide service. 	<ul style="list-style-type: none"> A tailored large load service agreement will be developed based on the specifics of the project. Please ensure that the large load service agreement is executed prior to the commencement of construction.



Required Study Details

Planning for energy infrastructure requires the right impact study based on load size and service needs. The chart below outlines the key details of Capacity, Distribution Impact, and Transmission Impact studies, including costs, timelines, and deliverables, to guide your energy project planning.

Large Power Request Size	Required Study	Deposit	Typical Timeline	Deliverables	Needs from Customer
1.6 - 8 MVA	Capacity Study	\$5,000	30 Days	Capacity acknowledgement, project details including cost and schedule, and next steps if Avista is able to provide service.	Properly filled out application.
8.1 - 25 MVA or Insufficient Grid Capacity	Distribution Impact Study	\$20,000	60-90 Days	Facility violations, system modifications, estimates of scope, schedule and cost if Avista is able to provide service.	Facility online, class of load, redundancy requirements, preferred resource, seasonal coincident peaks.
Over 25 MVA or Transmission Service Requested	Transmission Impact Study	\$40,000	60-180 Days	Facility violations, contingent facilities, resource requirements and system modifications, customer facility requirements, estimate of scope, schedule and cost if Avista is able to provide service.	Facility online, class of load, redundancy requirements, preferred resource, seasonal coincident peaks.

For more information please visit myavista.com/about-us/large-load-service-request

