

REGULAR MEETING NOTICE/AGENDA OF THE SPOKANE CITY COUNCIL

MEETING OF THURSDAY, SEPTEMBER 19, 2024, 11:00 A.M. – CITY COUNCIL BRIEFING CENTER

A regular meeting of the Spokane City Council will be held at **11:00 A.M. on Thursday, September 19, 2024**, in City Council Briefing Center - City Hall 808 W. Spokane Falls Blvd. The meeting can also be accessed live on CityCable5 and streamed online at <https://my.spokanecity.org/citycable5/live/> and <https://www.facebook.com/spokanecitycouncil> or by calling 408-418-9388 and by using access code 2491 436 7432.

The meeting will be conducted in a study session format and will be open to the public both virtually and in person. No legislative action will be taken. No public testimony will be taken, and discussion will be limited to appropriate officials and staff.

Executive Session

At any time during or after the regular Study Session Agenda, the City Council may choose to adjourn into Executive Session for the purpose of discussing privileged legal matters. This portion of the meeting would be closed to the public pursuant to RCW 42.30.110.

Agenda:

[SRHD Healthy Living Program Update - Mia Parker \(45min\)](#)

AMERICANS WITH DISABILITIES ACT (ADA) INFORMATION: The City of Spokane is committed to providing equal access to its facilities, programs and services for persons with disabilities. The Council Briefing Center in the lower level of Spokane City Hall, 808 W. Spokane Falls Blvd., is wheelchair accessible and also is equipped with an infrared assistive listening system for persons with hearing loss. Headsets may be checked out (upon presentation of picture I.D.) through the meeting organizer. Individuals requesting reasonable accommodations or further information may call, write, or email Risk Management at 509.625.6221, 808 W. Spokane Falls Blvd, Spokane, WA, 99201; or mlovmaster@spokanecity.org. Persons who are deaf or hard of hearing may contact Risk Management through the Washington Relay Service at 7 1 1. Please contact us forty-eight (48) hours before the meeting date.



The Healthy Living Program

Community Health Division

Our Local Health District



VALUES

Integrity

Compassion

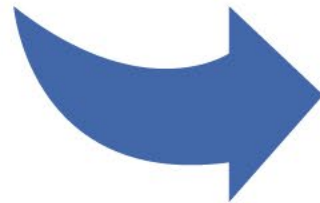
Respect

Equity

Collaboration

Innovation

Financial Stewardship



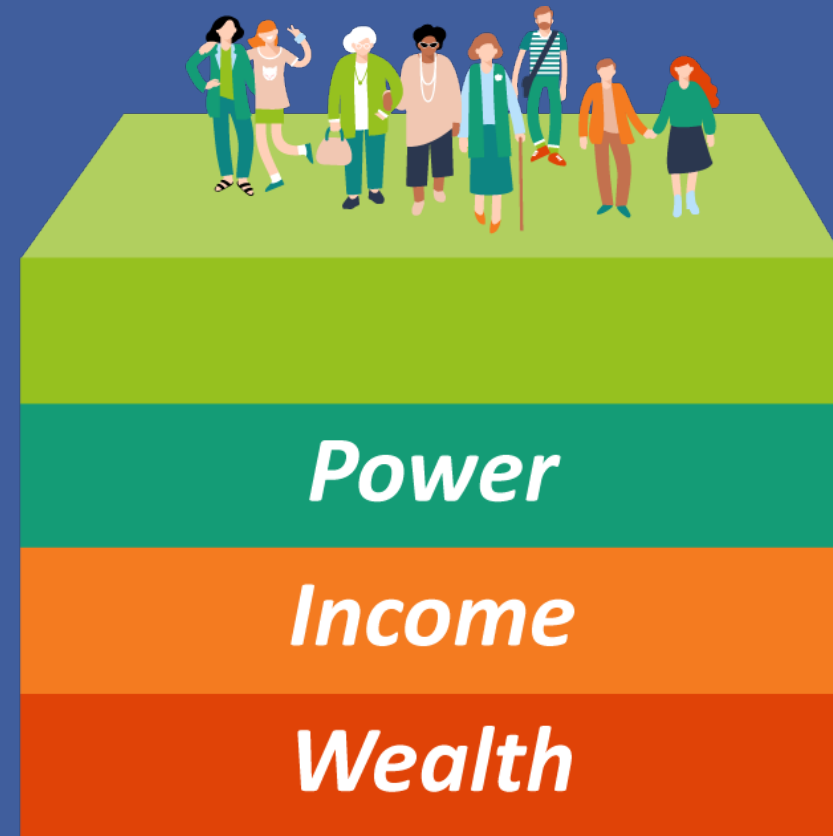
Healthy Living Program

Lifespan Community Health Promotion

With the HOPE framework



Inequity Clusters Risk



The Pair of ACEs

ADVERSE CHILDHOOD EXPERIENCES

Maternal
Depression

Homelessness

Divorce

Emotional/
Sexual Abuse

Domestic
Violence

Neglect

Mental
Illness

Substance
Abuse

Incarceration

ADVERSE COMMUNITY ENVIRONMENTS

Discrimination

Lack of
Opportunity

Violence

Poverty

Community
Disruption

Poor
Housing

Poor
Housing

Positive Childhood Experiences (PCEs)

Buffer impact of ACEs, block toxic stress & promote healing



**Positive
childhood
experiences**



Resilience



**Positive
health
outcomes**

Research indicates that the
absence of PCEs
may be
more damaging
to long-term health outcomes than the
presence of ACEs.

The HOPE Framework



RELATIONSHIPS



ENVIRONMENT



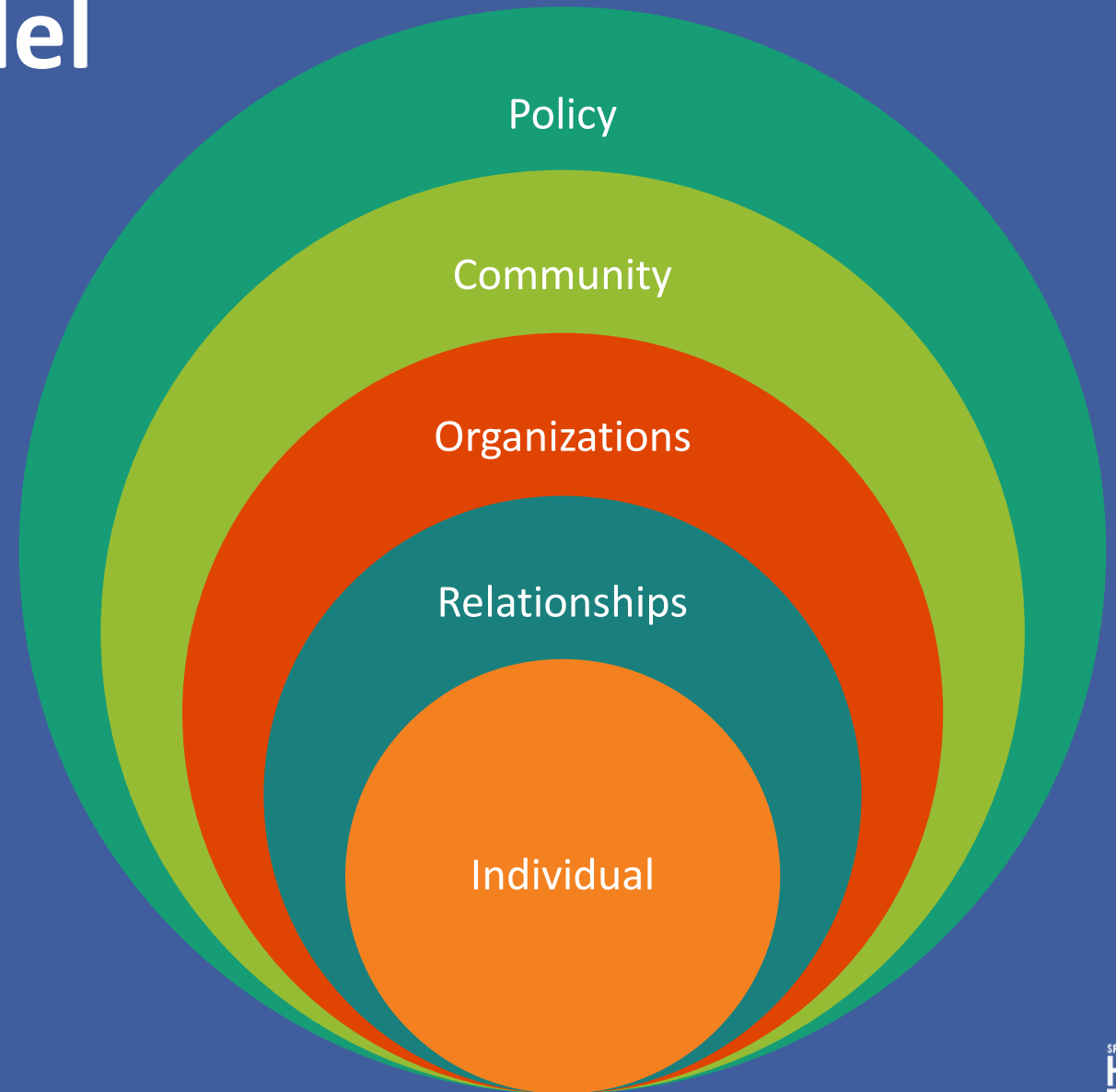
ENGAGEMENT



EMOTIONAL
GROWTH

Social Ecological Model

Guides action across
levels of impact



Current Focus Areas

Mia: Keeping Children Safe

- Coordinating Child Fatality Review
 - Authorized and recommended by RCW 70.05.170 and 70.05.210
- Preventing sudden unexpected infant death (SUID)
- Promoting firearm safety
- Preventing youth suicide



Mia Parker, BS

mparker@srhd.org

Jen: Beginnings Matter

- Increasing parent support
- Streamlining community resource navigation for parents with young children
- Coaching with HOPE training and technical assistance



Jennifer Hansen, BS

jhansen@srhd.org

Rumyana: Beginnings Matter

- Promoting respectful maternity care
- Increasing doula support
- Collecting local data
 - Social connectedness and relationships
- Coaching with HOPE training and technical assistance



Rumyana Kudeva, DSW, MPH, QCSW

rkudeva@srhd.org

Samantha: Built Environment

- Organizing community walk audits
- Promoting safe active transportation
- Supporting housing innovation for public health
- Promoting green space and parks



Samantha Hennessy, MS

shennessy@srhd.org

Natalie: Healthy Aging

- Promoting cardiovascular health
- Preventing falls
- Supporting aging in place



Natalie Tausin, RD, MPH

ntausin@srhd.org

Callie: Access to Care

- Promoting access to medical, behavioral, and dental health care
- Organizing focus groups
 - Understanding local access needs
- Educating local healthcare professionals
 - The Brief



Callie Morris, MPH-CHPS, CE

cmorris@srhd.org

Amanda: Family Wellness & Prevention

- Educating youth, parents, caregivers & school staff about commercial tobacco, cannabis, vaping and illicit substances
- Promoting positive coping skills and mental wellness among youth & adults
- Distributing Quit Kits, Narcan, medication safety lock boxes, and medication safety lock bags
- Educating community members & partners about illicit substances & stigma
- Educating businesses on the Smoking in Public Places Law



Amanda Dugger, BA, MS

adugger@srhd.org

Mary: Illicit Substance Use

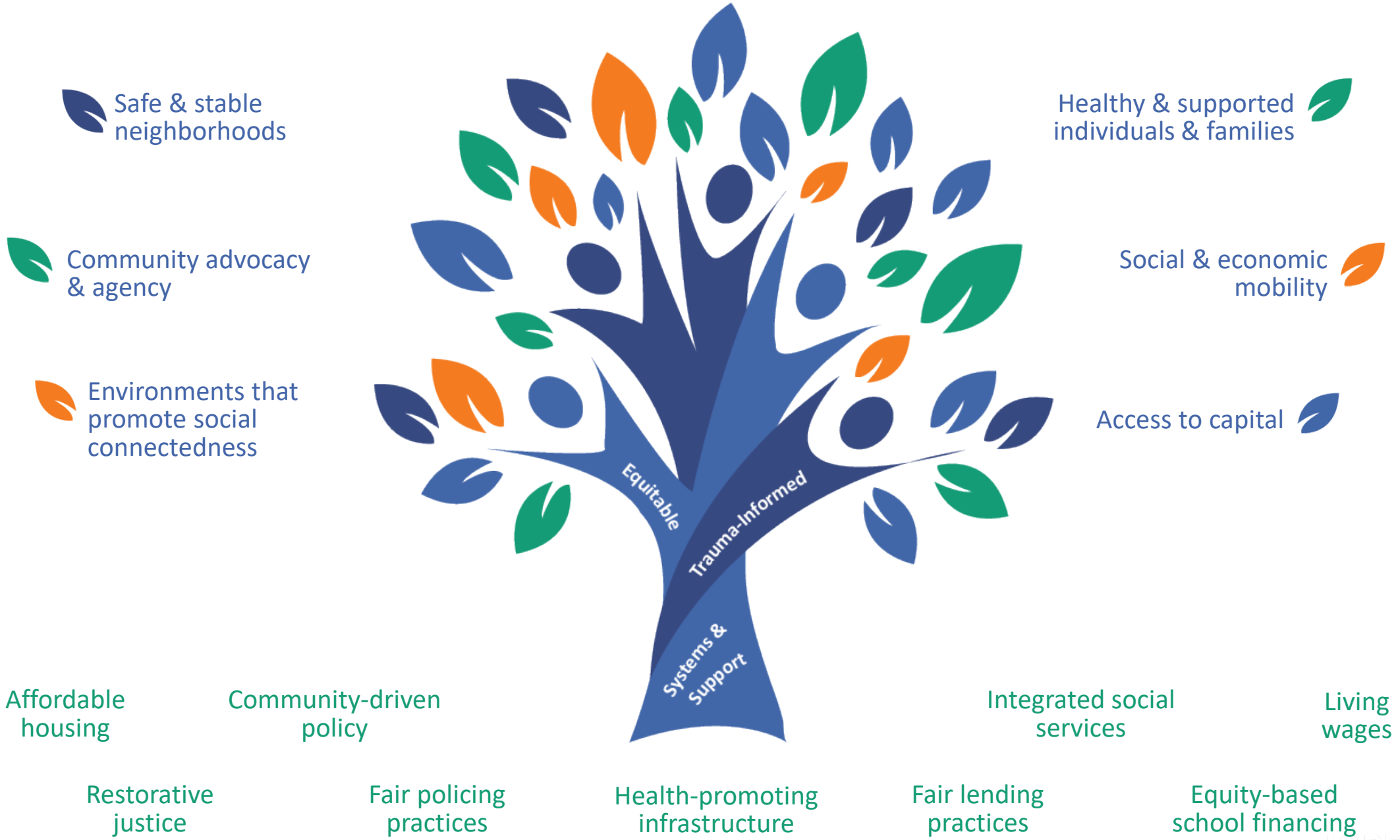
- Establishing Adult Overdose Fatality Review
 - Authorized and recommended by RCW 70.05.210
- Distributing Narcan
- Uplifting people with lived experience
- Reducing stigma
- Dispelling myths and stereotypes



Mary Malone, BA

mmalone@srhd.org

Shared Vision





11

SPokane REGIONAL HEALTH DISTRICT
1101 WEST COLLEGE AVENUE

*Thank
you!*

