

NEVADA-LIDGERWOOD NEIGHBORHOOD ASSESSMENT REPORT

March 28, 2005

Prepared by
Marla Bates, Neighborhood Planner
Melissa Wittstruck, Neighborhood Planner
Planning Services Department
City of Spokane
(509) 625-6060

This neighborhood assessment report was prepared as part of the City of Spokane's neighborhood planning process. In late 2003, 13 Spokane neighborhoods began planning, using the City's "Neighborhood Planning Guidebook" as a framework. A "Neighborhood Planning Assessment" is Step 3 of Phase II of the City's neighborhood planning process (see the "Guidebook"). This report documents the results of this Neighborhood Planning Assessment for the Nevada-Lidgerwood neighborhood. More information about the City's planning activities, including the Neighborhood Planning Guidebook, can be found at the Planning Services Department's website: www.spokaneplanning.org

Planning Services Department Mission Statement

*We work with citizens and leaders to achieve the community's desired future,
measuring our progress by the vitality of Spokane's economy, the health of its physical environment, and
opportunities for all citizens to improve their quality of life.*

Table of Contents

Introduction	1
Neighborhood Facts	1
Population	1
Housing	2
Economics	6
Education	8
Community Development Block Grant Neighborhood	9
Code Enforcement	10
Crime	12
Parks and Open Space	14
Traffic.....	15
Assessment Review	16
Appendix A Acknowledgements	19
Appendix B Neighborhood Assessment Matrix	21
Appendix C Neighborhood Council Map.....	27
Appendix D City of Spokane Department Contact Sheet	31
Appendix E Assessment Report Data	33
Appendix F Traffic Flow Maps	43

Introduction

The City of Spokane Comprehensive Plan is a long-range (20 years) general policy document that provides overall guidance for the future planning and development of the City of Spokane. City departments use this document as a guide to ensure that their actions reinforce the long-term goals of the city. The Comprehensive Plan was developed under the requirements for the Growth Management Act (GMA) of 1990 and was adopted by the City Council on May 21, 2001.

Chapter 11 Neighborhoods of the Comprehensive Plan opens the door to the neighborhood planning process. The City's first Assessment Meetings were held throughout the month of March 2004. These neighborhood planning assessment activities implement the Comprehensive Plan through center planning, resolve joint planning issues in the city's unincorporated urban growth area, and identify and address neighborhood issues and opportunities.

Assessment

The assessment process will help the neighborhoods identify issues that are not already addressed in the Comprehensive Plan—remaining neighborhood issues that may be addressed through further planning at the neighborhood level. In addition, the process will help to determine the type of plan or action needed to address the neighborhood issues.

The assessment meeting is a brainstorming exercise that is used for the neighborhood to identify as many issues as possible. The issues and needs will likely fall into general categories that differ neighborhood by neighborhood.

On March 9, 2004 the Nevada-Lidgerwood Neighborhood, along with one other neighborhood group, asked themselves what their issues and needs were. A complete list of issues identified at the Assessment Meeting is available in the Assessment Matrix, Appendix B.

Some basic information is provided in this report that was not available at the time of the Assessment Meeting. This information will help frame the current condition of the Nevada-Lidgerwood Neighborhood and enable the neighborhood to better address its issues, preserve its assets, and prepare for a prosperous future.

Neighborhood Facts

The data presented here is based on the 1990 and 2000 Census Data, the Police Department, Building and Code Enforcement, the Office of Neighborhood Services, the Engineering Services Department, and the Planning Services Department. Census information in this report is generalized because census blocks do not follow neighborhood council boundaries. A weighted average process was performed based on area resulting in a weighted average of non-summary data. Calculations are for the entire Nevada-Lidgerwood Neighborhood Council boundaries and will differ from Community Development information.

This data is an advisory tool intended for general public inquiry only.



Nevada-Lidgerwood Assessment Meeting, Salk Middle School. March 9, 2004

Population

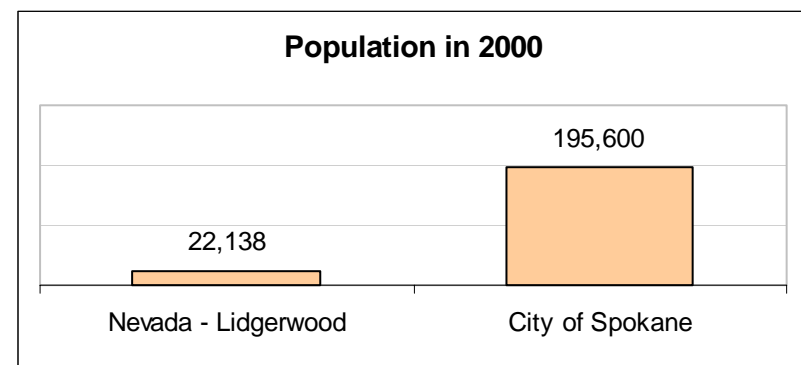


Table P 1

As shown in Table P 1 (previous page) the Nevada-Lidgerwood Neighborhood represents 11% of the City's population. The neighborhood size is about 14% of the city's land area.

Table P 2 shows the percent change in population from 1990 to 2000. It shows that there is an increase of 9% of its population in the last 10-year period, the same rate of population increase experienced by the city as a whole.

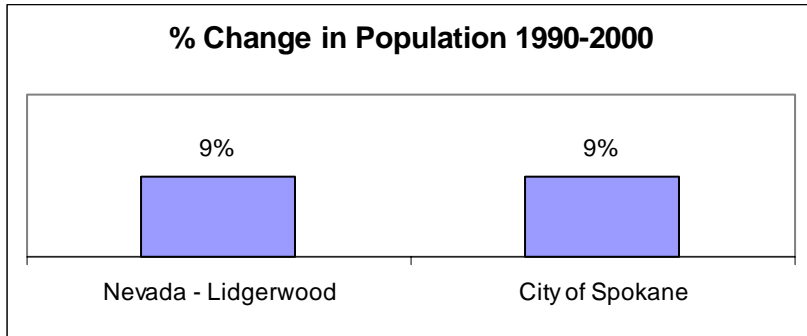


Table P 2

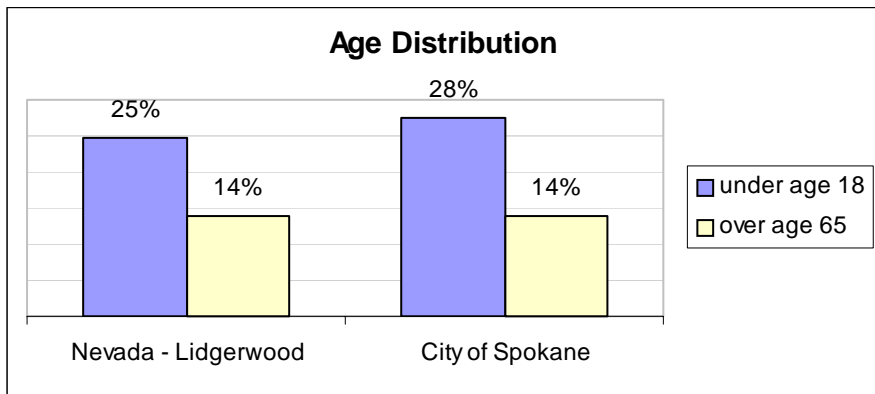


Table P 3

Table P 3 shows that the percentage of Nevada-Lidgerwood's population over age 65 is the same as the citywide percentage, 14%. The neighborhood's population under age 18 (25%) is slightly lower than the citywide percentage at 28%.

The Racial Distribution for the Nevada-Lidgerwood Neighborhood and citywide are very comparable.

Housing

A household includes all the people who occupy a housing unit. A housing unit is a house, an apartment, a mobile home or trailer, a group of rooms, or a single room that is occupied (or, if vacant, is intended for occupancy) as separate living quarters. Separate living quarters are those in which the occupants live separately from any other people in the building and which have direct access from the outside of the building or through a common hall. The occupants may be a single family, one person living alone, two or more families living together, or any other group of related or unrelated people who share living arrangements.

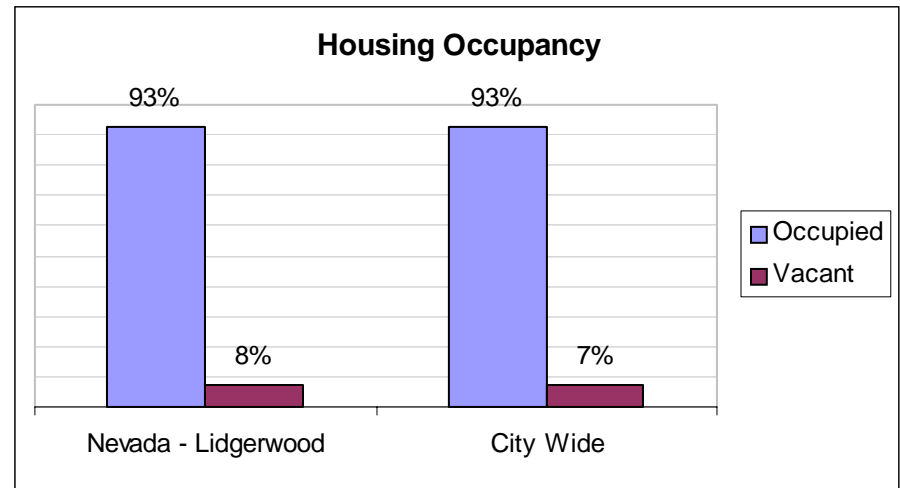


Table H 1

The Nevada-Lidgerwood Neighborhood occupancy rate and vacancy rate are comparable to what is experienced citywide.

Table H 2 shows the percentage of owner and renter occupied housing units. Nevada-Lidgerwood has a significantly higher percentage of rental units, and a correspondingly lower percentage of owner units, than citywide. Table H 3 shows the percent change in owner and renter occupied housing units between 1990 and 2000. The neighborhood has significantly increased the

number of renter occupied units compared to citywide (10% compared to 4%). For owner occupied units Nevada-Lidgerwood gained 4% and the city gained 19%. Remember Table P 2 showed that the neighborhood's percentage of population increase was 9%. Combined with information from Tables H 2 and H 3, it appears that most of that increase is being absorbed by rental units.

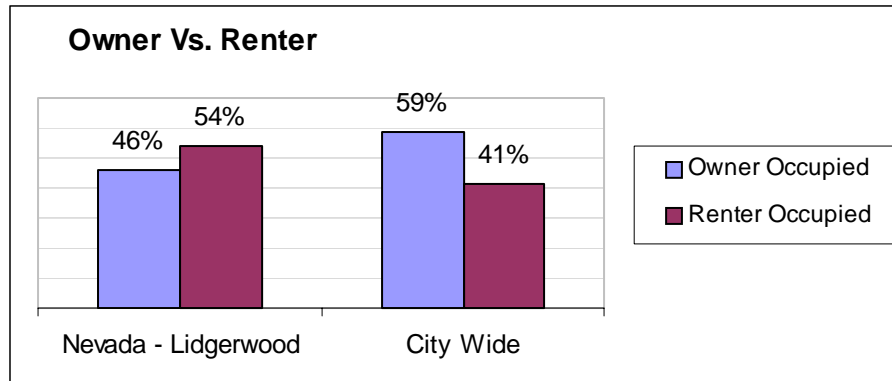


Table H 2

A family consists of a householder and one or more other people living in the same household who are related to the householder by birth, marriage, or adoption. A household can contain only one family for purposes of tabulations. Not all households contain families since a household may comprise a group of unrelated people or one person living alone.

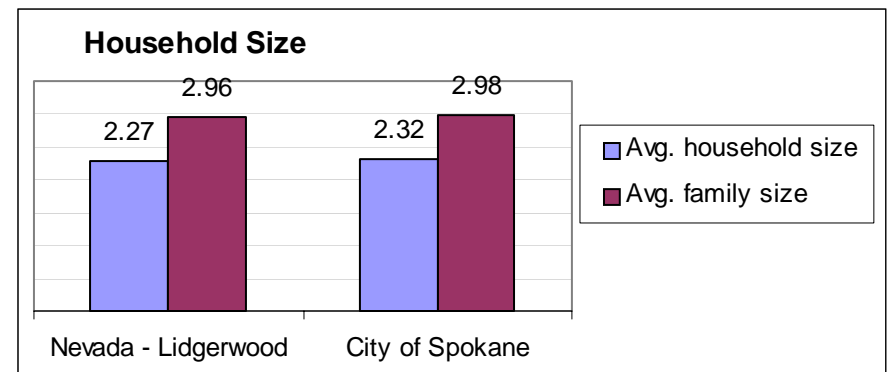


Table H 4

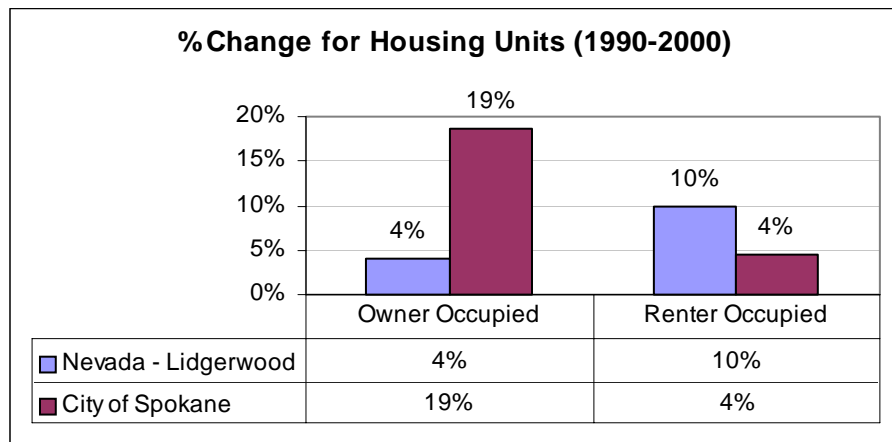


Table H 3

Average Household Size is a measure obtained by dividing the number of people in households by the number of households. The Average Family Size is a measure obtained by dividing the number of people in families by the total number of families (or family householders).

Table H 4 shows the average household size is 2.44 compared with the citywide size 2.32 - a slightly larger number of people living in the same household than citywide.

Table H 5 (next page) shows that the major demographic differences in Nevada-Lidgerwood compared to citywide are somewhat lower percentages of family households, slightly higher percentages of female householders and female householders with children under 18, and a much lower percentage of non-family households than citywide.

As shown in Table H 6, Nevada-Lidgerwood outpaced the city in housing construction up to 1990. From 1990-2000 building trends for the city and Nevada-Lidgerwood were comparable. Remember that Table H 2 showed that the neighborhood's greatest increase in housing units came from rental units. Nevada-Lidgerwood is geographically a large area, with dense, inner-city development patterns characterizing the neighborhood from the southern boundary at Euclid up to Francis, with the notable exceptions being the intense commercial development along Division Street and Holy Family Hospital. Large-scale commercial, and multifamily development is more prevalent north of Francis. Single family development is on somewhat larger lots than to the south, and there are significant areas of vacant land.

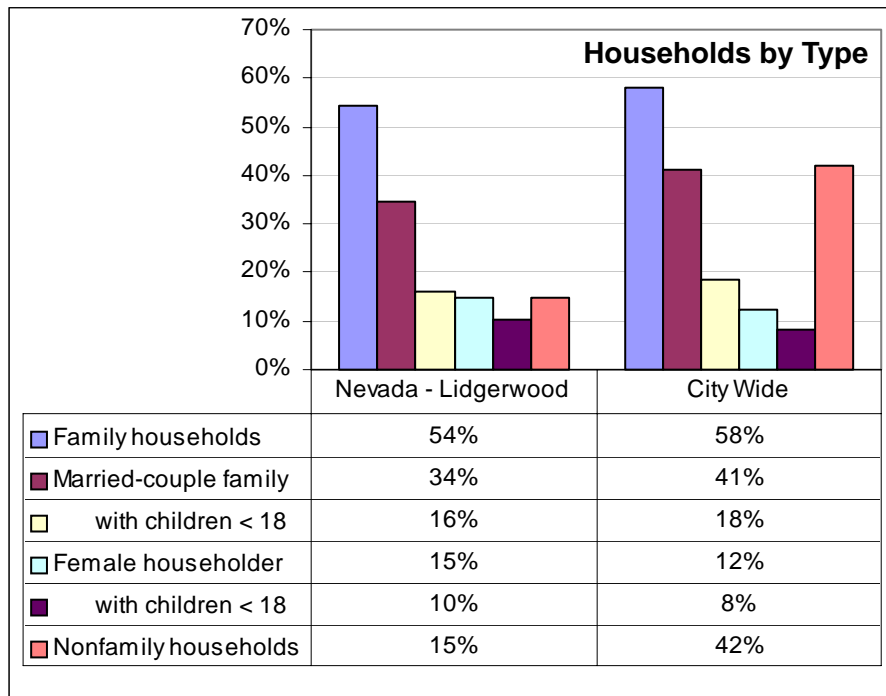


Table H 5

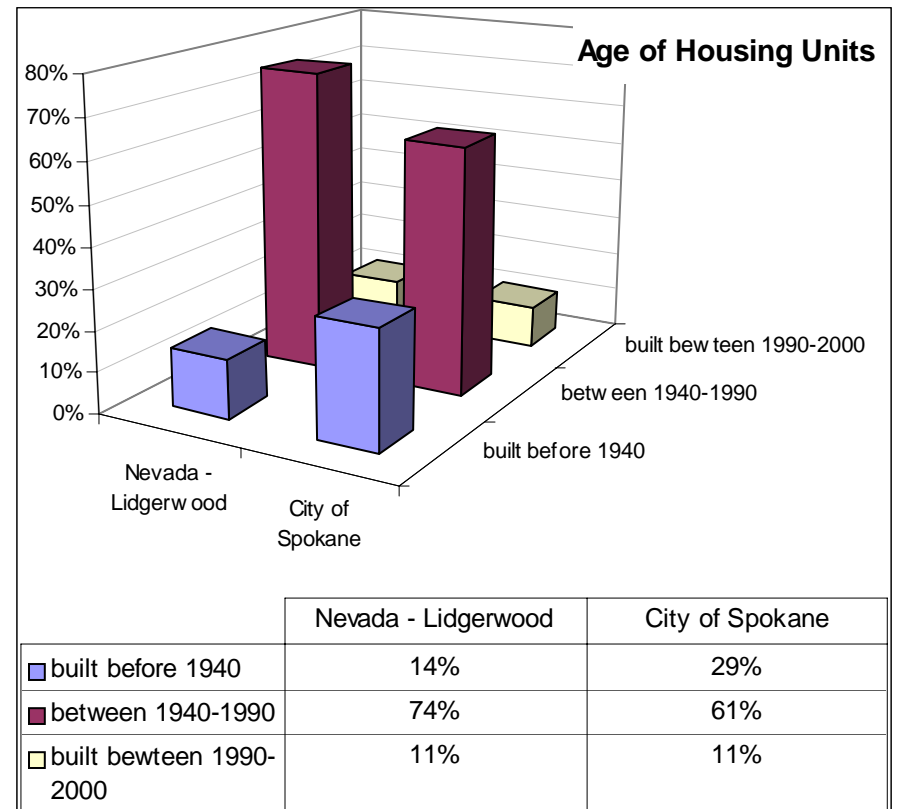


Table H 6

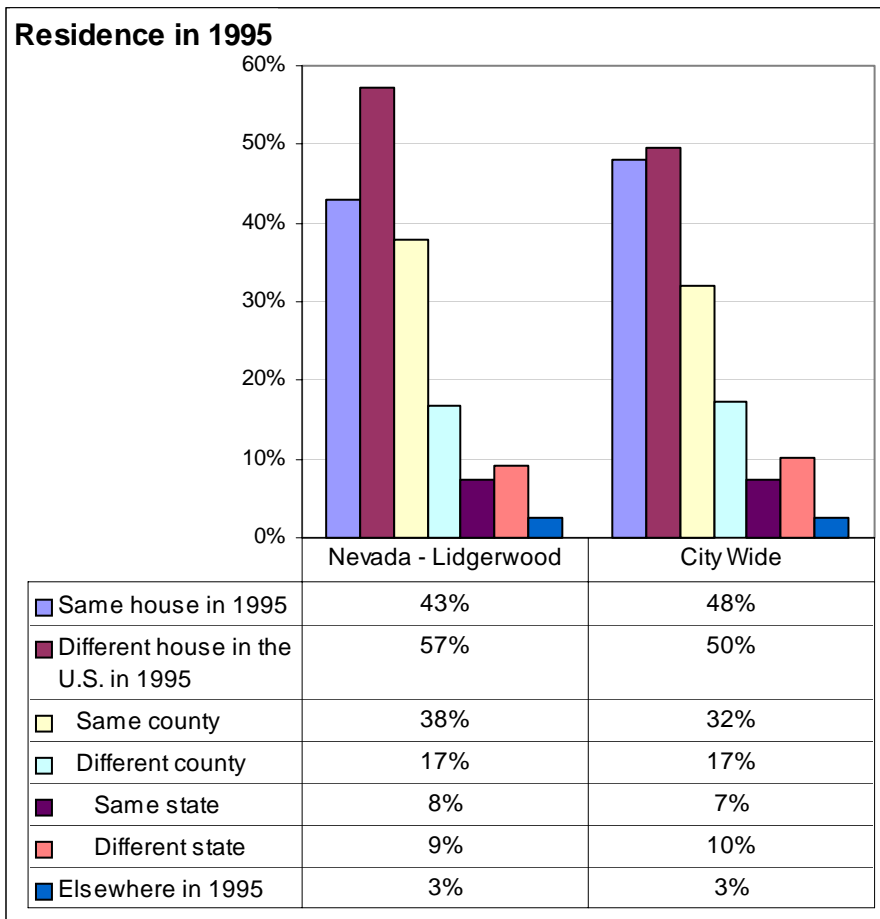


Table H 7

Table H 7 shows that the Nevada-Lidgerwood Neighborhood had fewer residents in the same house in 1995 than citywide. They also had 7% more residents in a different house in 1995. These numbers could give a general indication that the neighborhood has a higher number of people changing homes more often than citywide. The higher numbers of renter occupied homes as seen in Table H 2 and H 3 appear to support this.



Nevada-Lidgerwood Neighborhood, Issues Identification March 2004

Economics

A quick sketch of neighborhood and citywide economic trends is obtained with information such as the number of families in poverty, and per capita income. A more complete picture can be obtained by accessing other economic data from the U.S. Census Bureau at www.census.gov, or the City of Spokane Economic Development web site at <http://www.spokanecityed.org/links.asp> for Chamber of Commerce, INTEC, SNEDA, AHANA, and the Downtown Spokane Partnership information. The following tables illustrate data available from the census and an initial look into the economic health of the neighborhood.

Nevada-Lidgerwood has 34% of all parents in a household in the work force compared with 62% for citywide.

Table E 1 shows the number of families below the 1999 poverty level. Nevada-Lidgerwood neighborhood reported 15% of its families below poverty level, compared to a citywide 11% of families below the poverty level. The information on how poverty status is determined for census purposes can be found at the census link above. This information is calculated for the entire Nevada-Lidgerwood Neighborhood Council boundaries, and will differ from information for that portion of the neighborhood that is a Community Development neighborhood.

Table E 2 shows the income for the neighborhood and citywide per capita for persons aged 15 and over.

Table E 3 shows the employment status of neighborhood residents age 16 and over compared to citywide.

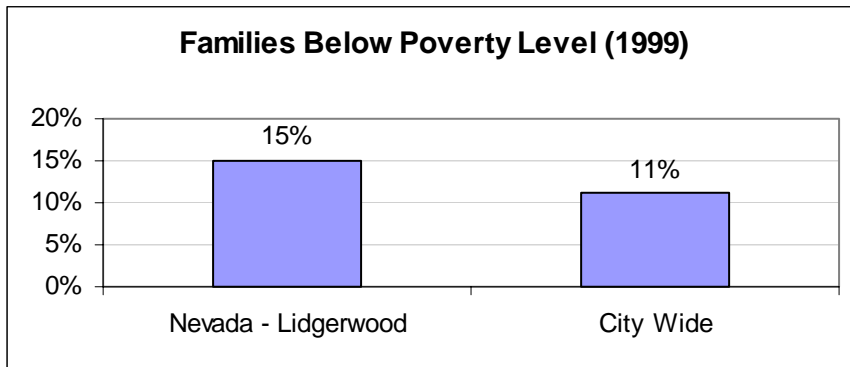


Table E 1

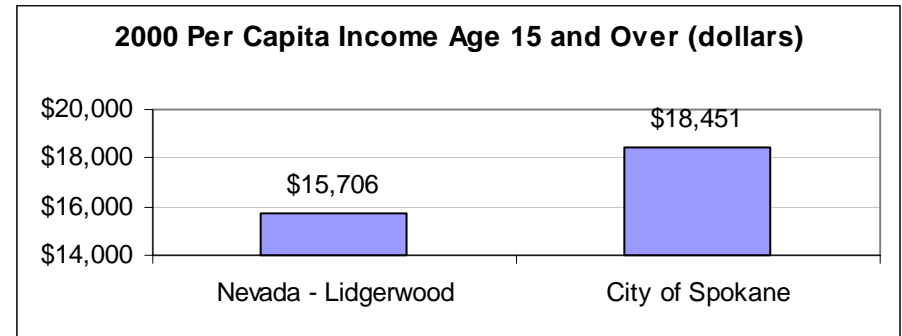


Table E 2

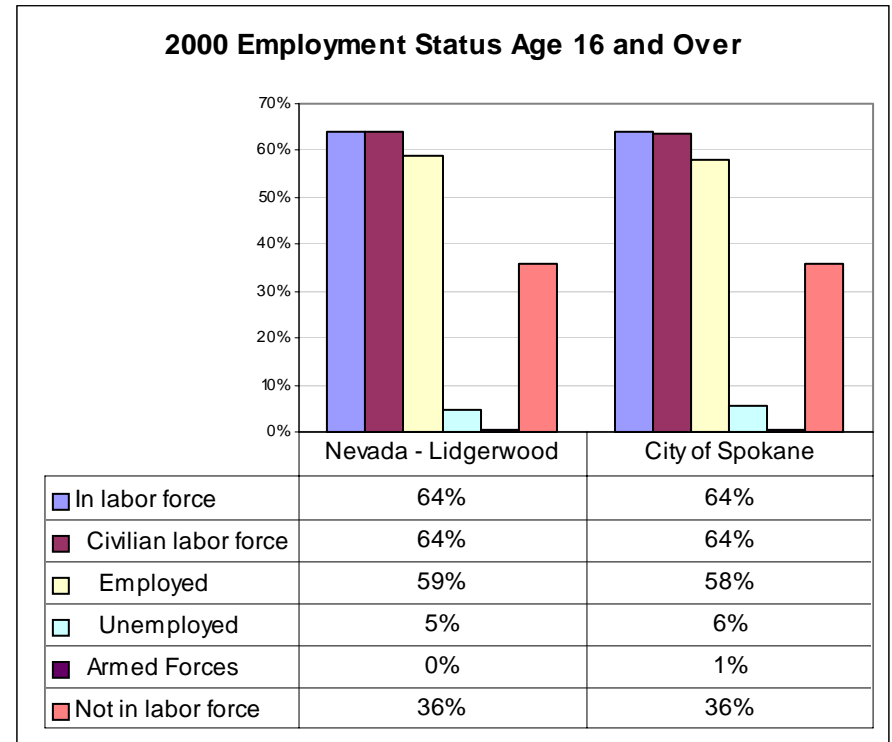


Table E 3

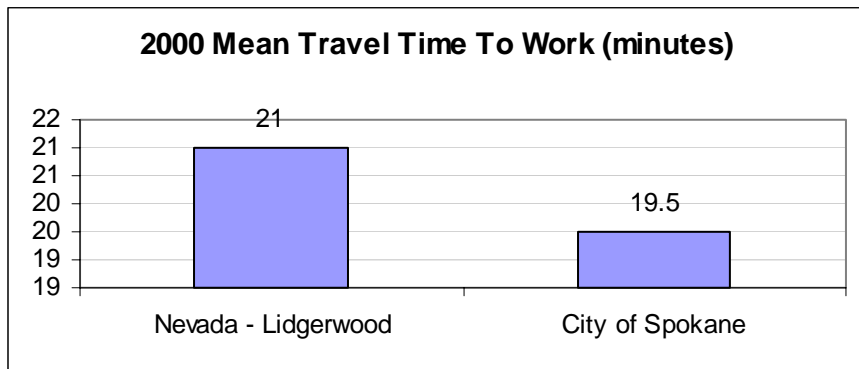


Table E 4

Table E 4 shows that the travel time to work is a bit longer for this neighborhood compared to citywide. For analysis, transportation modes and travel destination could be obtained. The percentage of income assigned to transportation expenses would also be a useful piece of economic information.

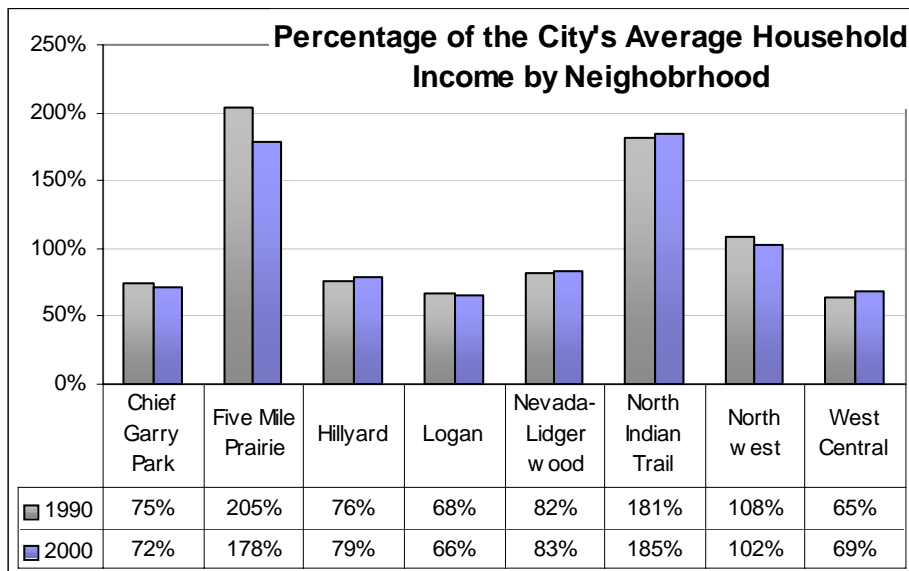


Table E 5

Table E 5 show the neighborhood's percentage of the city's average household income is just over 80% and changed very little between 1990 and 2000. Numerical data for this table is found in the appendix.

Table E 6 shows neighborhood occupations. A breakdown of average wage information would be useful.

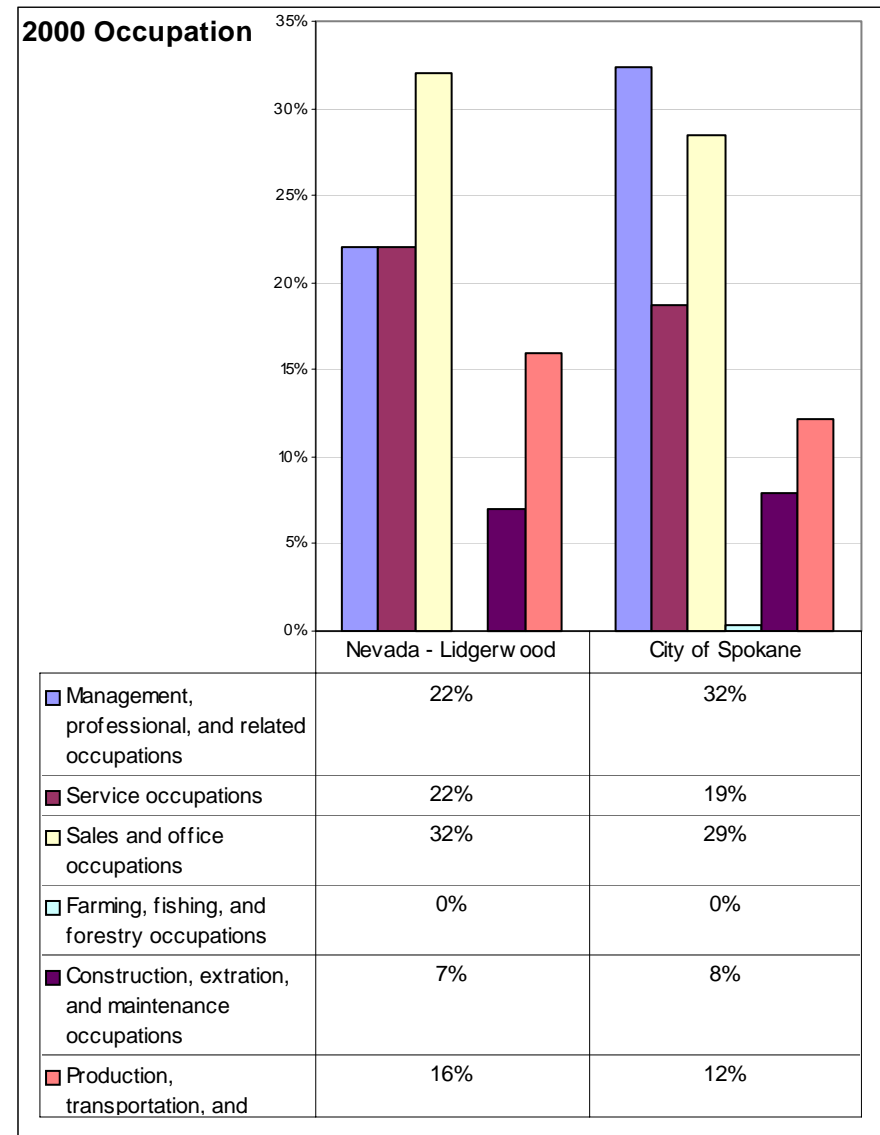


Table E 6

Education

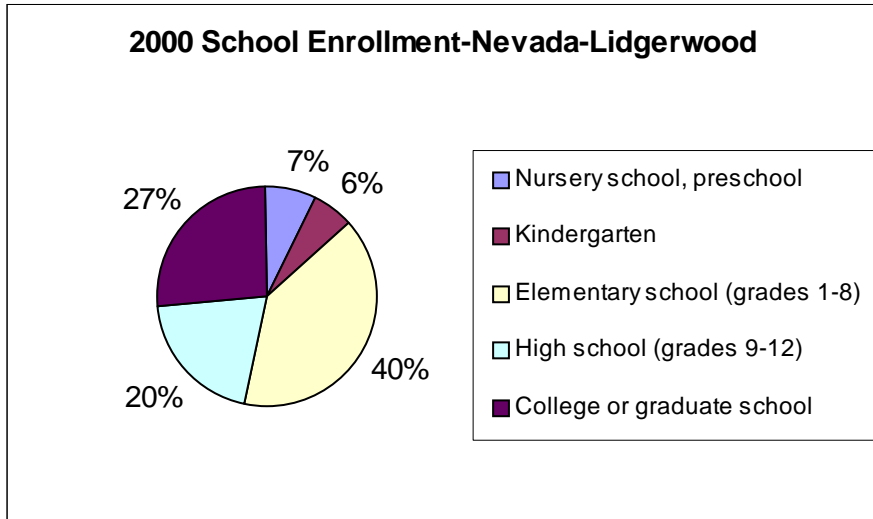


Table ED 1

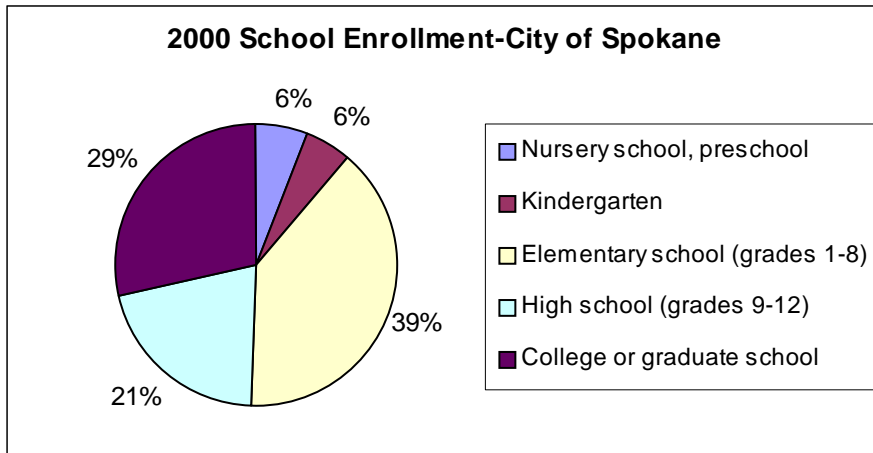


Table ED 2

Table ED 1 and ED 2 show that school enrollment percentages are similar to citywide.

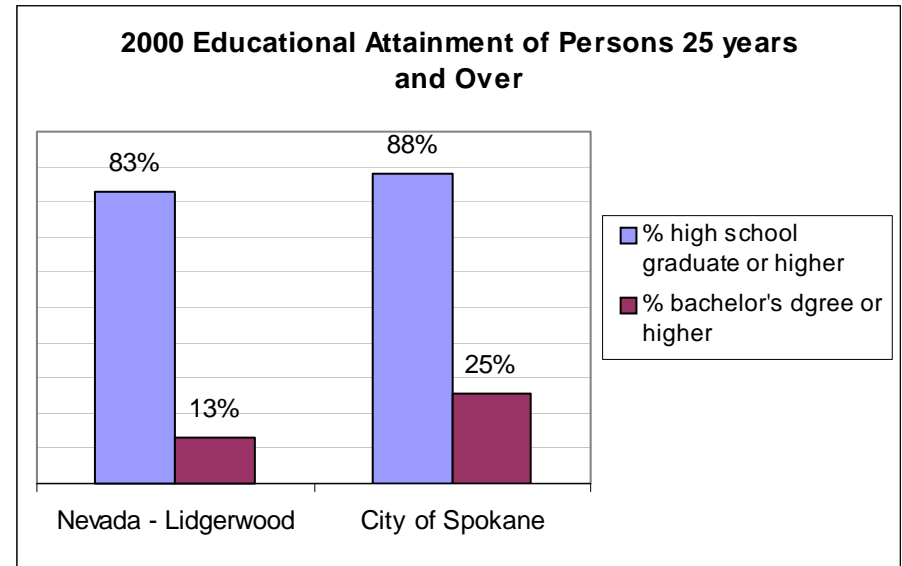


Table ED 3

Levels of educational attainment percentages are lower in Nevada-Lidgerwood than citywide. There are 5% fewer people with a high school graduate degree or higher and 12% fewer people with a bachelor's degree or higher.

Community Development Block Grant Neighborhood

Thirteen neighborhoods in Spokane are eligible to receive Community Development Block Grants (CDBG), including a portion of the Nevada-Lidgerwood neighborhood council. The Community Development Board employs a disbursement formula to direct funds to areas of greatest need. The formula develops a neighborhood ratio based on the overall number of persons below poverty level, the number of youth and elderly below poverty level, the number of persons at 80% or less of Section 8 limits, the number of single head of households with children, minority populations, the number of housing units built before 1940, and the number of overcrowded housing units. The neighborhood allocations are determined by multiplying the resulting ratio by \$1,000,000 to arrive at a neighborhood allocation. The Community Development Board is an advisory body to the Spokane City Council and is comprised of citizen volunteers.

Programs utilizing Community Development Block Grant (CDBG) funds must meet one of the following three National Community Development Block Grant Objectives. The City of Spokane’s mission statement reflects the first objective.

- Benefiting low and moderate income persons
- Addressing slums and blight
- Meeting a particularly urgent community development need

DESCRIPTION	GRANT	EXPENDITURE
North Foothills Mini-Park Improvement	10,000	0
Lidgerwood Summer School Program	2,000	0
Neighborhood Communications	8,656	-8,102.1
Neighborhood Clean-up	5,535	0
Boys and Girls Club Building Improv	5,000	0
Garry Middle School Comm Garden		-100
Nevawood Cops Program	5,500	-6,651.3
Zion Parking Lot Resurfacing		-19,215.75
Neighborhood Planning	7,815	0
Nevada Lidgerwood Total	44,506	-34,069.15

Table C 1

Table C 1 shows where the CDBG funds were spent for Nevada- Lidgerwood by type.

Table C 2 shows the expenditures for all 13 CDBG neighborhoods for Single Family Rehabilitation for 2003. Each neighborhood decides on the amount to allocate for single-family housing rehabilitation and the CD Board matches that allocation on a 3 to 1 ratio. Citywide, 2003 single-family home rehabilitation expenditures came to \$1,276,830.

Nevada-Lidgerwood also has \$82,386 CDBG funds available for sidewalk improvements.

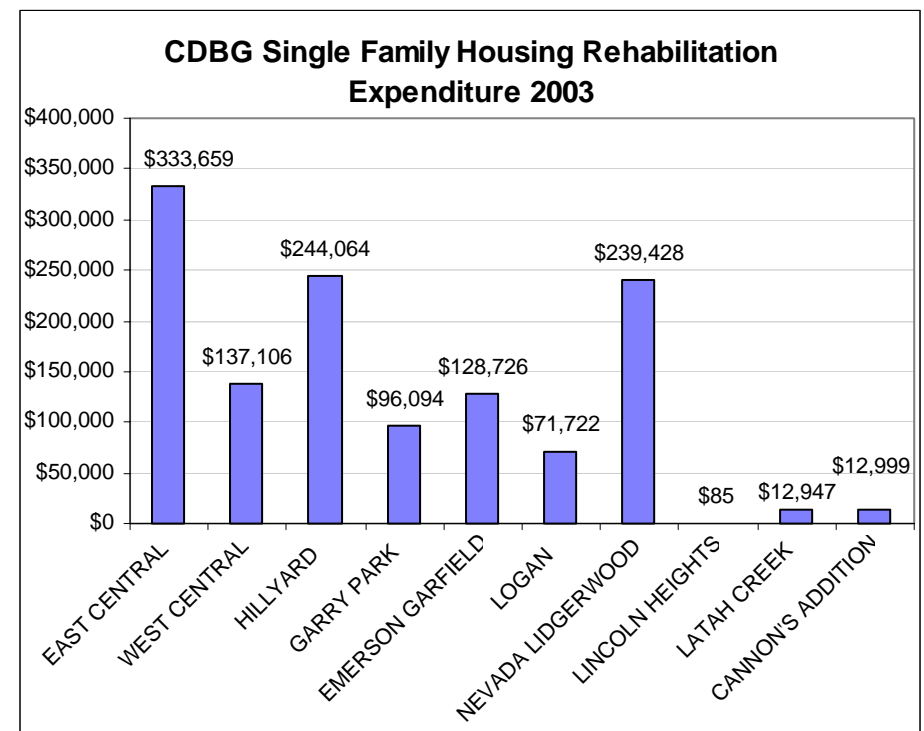


Table C 2

Code Enforcement

Code enforcement came up as an issue for all neighborhoods who went through the Assessment process. Code Enforcement is a collaborative effort between many different departments and agencies that provide services in specific areas. The City of Spokane has a Code Enforcement Department that deals with the complaints regarding zoning, solid waste, cars on private property, buildings, and other miscellaneous complaints. Code Enforcement also funnels countless numbers of complaints to the Spokane Police Department for issues such as cars parked on public roads, and criminal activity, and to Spokanimal for stray dogs and cats, barking dogs, bite cases, DOA pickups, investigations, rescues, inspections, and other related activity. Specific complaints for basketball hoops on public roads are directed to the City of Spokane Engineering Services Department.

Table CE 1 shows the number of new complaints the Code Enforcement Department received in 2004, breaks it down by type, and shows the number of complaints received per 1,000 people in each area. The Code Enforcement Department has labeled areas in the city by Area 1-5, which do not directly correspond with Neighborhood Council Boundaries. The Nevada-Lidgerwood Neighborhood is located in Area 4 which is comprised of: Nevada-Lidgerwood, Logan, Riverside, Cliff/Cannon, Peaceful Valley, Browne’s Addition, and the tip of Latah Valley north of I-90 with a general population of 47,203.

Table CE 2 shows the number of complaints by type for Area 4 that were new, field inspected, enforcement ordered, and completed.

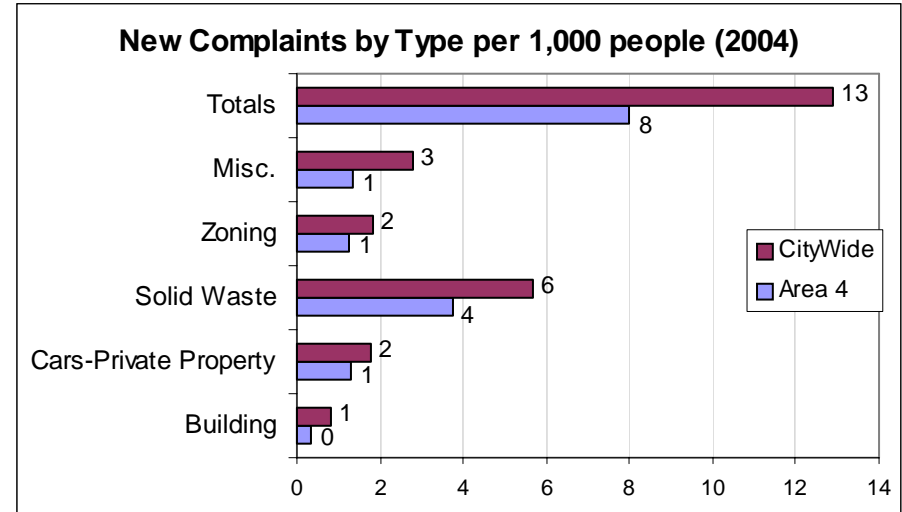


Table CE 1

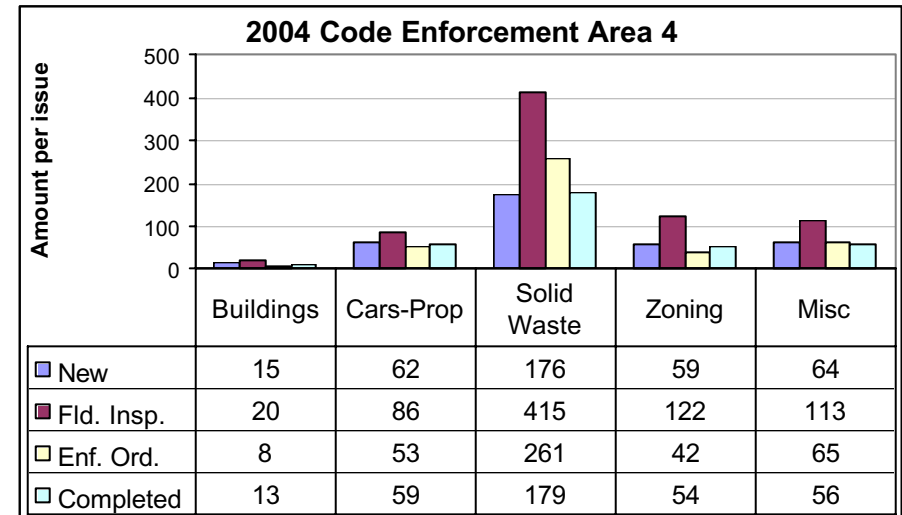


Table CE 2

New Complaints by Type for 2004 Citywide

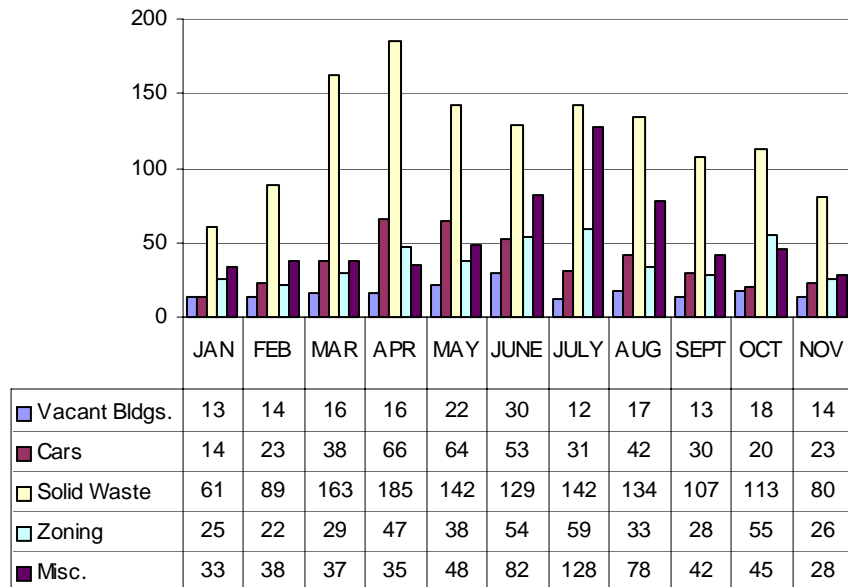


Table CE 3 shows the number of new complaints by month citywide. Solid waste is one of the largest code enforcement issues dealt with in the city, with the highest numbers occurring in March and April. The miscellaneous code enforcement issues are highest in June, July, and August.

Table CE 3

Crime

Reports of criminal activity have been compiled by the Spokane Police Department for the year 2003. The 2004 data will not be complete until February 2005. Calls for service are recorded by the Police Department and are generally broken down into the following categories: broken windows, administrative details, alarms, arrest functions, civil, deprivation of liberty, domestic/family violence, emergency responders, informational reports, juvenile, mental/substance, missing/endangered person, noise disturbance, nuisance person, order disturbance, property damage, public decency, sex crimes, special response teams, suspicious circumstance, theft, traffic/parking, vice crimes, and violence. Table CR 1 depicts the calls for service per 1000 residents for the neighborhood compared to citywide. Further information is available in an appendix or with the Police Department (contact David Lund at 835-4513).

Table CR 1 provides a perspective for the Calls for Service information using a per capita number. The following table, for example, shows that there are 88 calls for service for Emergency Responders per thousand people in the neighborhood compared to the 74 calls for service per 1,000 people citywide. There are more calls for domestic/family violence, and the total number of calls for service per 1000 residents is higher compared to citywide.

Calls for Service per 1,000 Residents 2003

	Nevada-Lidgerwood	City of Spokane
Neighborhood Population	22,138	195,629
Broken Windows	3	2
Administrative	45	40
Alarms	29	32
Arrest Functions	10	11
Civil	1	1
Deprivation of Liberty	30	23
Domestic/Family Violence	58	42
Emergency Responders	88	74
Informational Reports	57	42
Juvenile	11	13
Mental/Substance	9	10
Missing/Endangered Persons	30	31
Noise Disturbance	42	30
Nuisance Person	12	14
Order Disturbance	64	54
Property Damage	32	30
Public Decency	2	2
Sex Crimes	3	2
Special Response Teams	1	0
Suspicious Circumstances	61	54
Theft	181	127
Traffic/Parking	88	83
Vice Crimes	8	10
Violence	29	24
Total Calls for Service	894	749

Table CR 1

The second set of data refers to the actual reports that document each crime investigation. The documented data, or UCR's are what the FBI publishes on an annual nationwide basis. There are sixty-two, very detailed categories for the UCR's. There are seven basic categories: assault, burglary, homicide, larceny, rape, robbery, and vehicle theft. Each category has many levels of detail, for example there are five categories for assault as follows: Assault, Aggravated; Assault, Firearm; Assault, Knife; Assault, Non-Aggravated; Assault, O/Dangerous Weapon.

The 62 categories have been boiled down to eight components. Reported crime by type shows the type of crime committed per 1,000 people in the neighborhood and in the city. Table CR 2 shows the Nevada-Lidgerwood

Neighborhood has 4 more assaults, 2 more burglaries, and 38 more total crimes reported per 1,000 people than citywide.

Total reported crime by type per 1,000 residents for Nevada-Lidgerwood is 142 and citywide is 104.

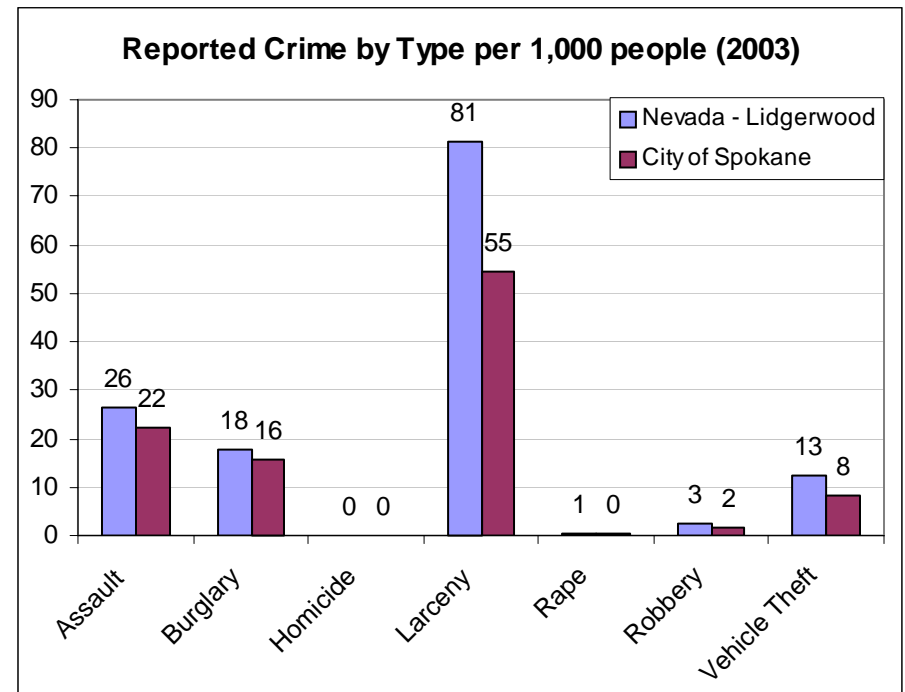


Table CR 2

Parks and Open Space

Every community requires a variety of areas and facilities for meeting the recreational and leisure time pursuits of its residents and visitors. Parks, open space, and natural environments are essential components of a healthy community and contribute immeasurably to Spokane’s quality of life. Spokane Countywide Planning policies and the City of Spokane Comprehensive Plan policies address parks and open space requirements within Urban Growth Areas.

As the City’s population grows over time and land becomes more and more developed it becomes increasingly difficult to acquire lands and support existing and additional parks and open space with available funding. This is a challenge the Parks and Recreation Department is well aware of.

The city measures Level of Service (LOS) by comparing the acres of parks per every thousand residents. The breakdown of LOS per thousand residents is shown in Table P&O3. The total LOS for parks is totaled to 5.28 parks per thousand residents. Conservation land is not included in LOS calculations. The National Recreation and Parks Association (NRPA) has established a standard LOS of 11.25 acres per thousand residents. Table P&O 1 compares the LOS of the NRPA, the City of Spokane, and the Nevada-Lidgerwood Neighborhood.

NRPA	City of Spokane	Nevada-Lidgerwood Neighborhood
11.25	5.28	3.03

Table P&O 1

The LOS was obtained from the City of Spokane Comprehensive Plan and is verified in the Parks, Recreation, and Open Spaces Plan adopted in April 28, 2000.

Table P&O 2 shows the types of parks and acreage available per 1,000 residents in the Nevada-Lidgerwood Neighborhood and citywide.

Park Name	Type of Park	Acres of Park
Northpoint Park	Neighborhood Parks	11.79
Friendship Park	Neighborhood Parks	11.79
Nevada Park	Neighborhood Parks	9.57
Glass Park	Neighborhood Parks	3.64
Byrne, Patrick S. Park	Neighborhood Parks	3.61
Franklin Park	Community Parks	26.81
Franklin Sports Complex	Sports Complexes	15.19
	Total Acres	82.40

Table P&O 2

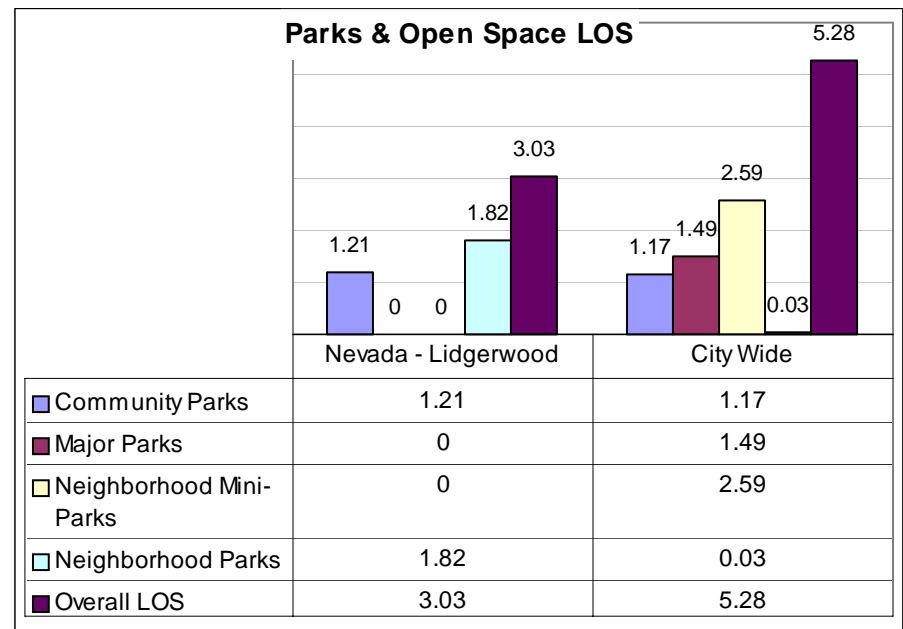


Table P&O 3

Traffic

During the Assessment meeting issues were stated that directly related to traffic. Traffic flow, safety, and school related traffic were mentioned for Nevada-Lidgerwood. No specific intersections were noted during the assessment process. The two points used to create the traffic flow chart in Table TR 2 are shown below. The northern point is on Rowan Street between Division and Lidgerwood and the second point is on Queen Street between Division and Lidgerwood.

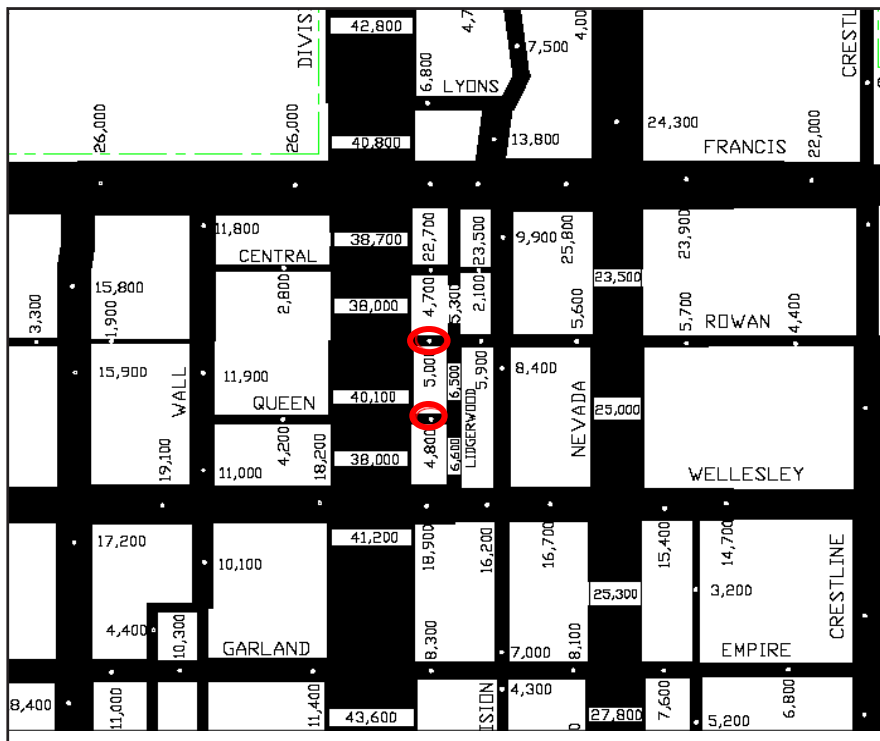


Table TR 1

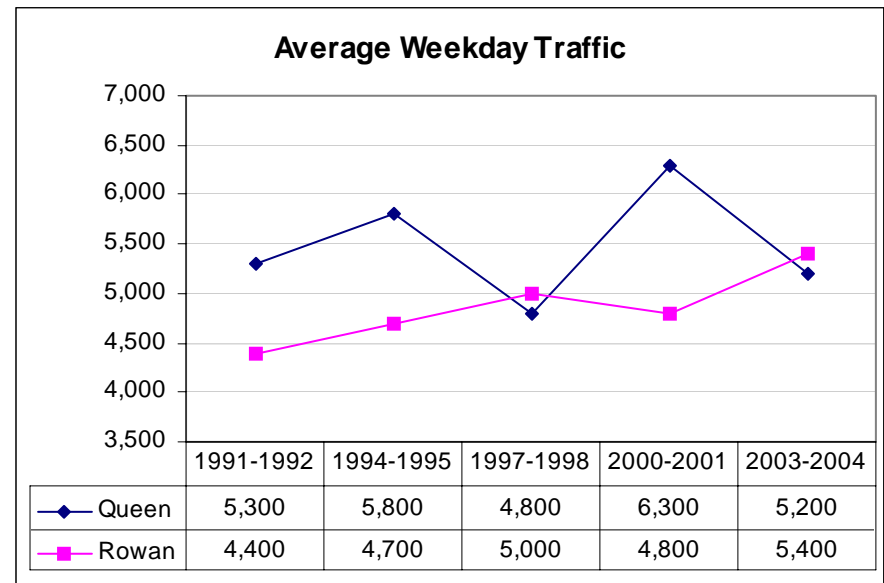


Table TR 2

Table TR 2 shows the Average Weekday Traffic from 1992 to 2004 is increasing at a steady rate. Census summary data regarding commuting behavior in the neighborhood may be a useful tool for analysis of traffic issues and solutions. This information can be accessed by neighborhood at www.spokanegis.org.

Assessment Review

During the assessment meeting the participants were asked to list and discuss all of the issues they face in their neighborhood. Questions such as, “If all issues for your neighborhood were addressed, would this be the neighborhood you want?” This portion of the Assessment Report breaks the issues into three categories: Things WE can do by ourselves, Things we can do with a Partner, and Things the City should do.

All of the issues stated here are defined in more detail in the attached Assessment Matrix, and where appropriate, linked to Comprehensive Plan policies. The most important issues are listed first in each category.

Things we can do **Ourselves**:

- Lack of facilities for youth; sports, skateboards; give youth something to do
- Lack of involvement from neighborhood residents. Residents need to get to know one another, reach out to youth & schools, elderly, citizens, & businesses for their involvement & participation
- Neighborhood Safety: Clean, safe parks, too many thefts and burglaries, lack of Block Watch, rolling drug deals
- We have lack of pride & ownership which shows in home & yard care
- Closest commercial center is 2-4 miles away
- Neighborhood Councils lack credibility in decision making process.
- Loud music late at night, barking dogs, abandoned vehicles on vacant lots, vehicles “for sale” at curb for long periods of time
- Lack of awareness of the neighborhood; need positive marketing

Things we can do with a **Partner**:

- ◆ Neighborhood would like more information about proposed developments and opportunity to work with developers. Also need to know what types of projects they will be notified on
- ◆ Un-maintained rental property
- ◆ Hill N’ Dale Rotary Park is unsafe
- ◆ City doesn’t enforce sidewalk shoveling

- ◆ Ice on sidewalks from City plows
- ◆ Unreliable bus system affects everyone, limits mobility for elderly
- ◆ Crossing Division Street to get to Franklin Park is impossible
- ◆ North-South freeway negative impacts
- ◆ Vandalism/graffiti
- ◆ Need more housing choices, especially for the elderly; need more than single-family houses and retirement homes
- ◆ Limited social services within neighborhood
- ◆ Revenue from north side doesn’t match resources allocated for north side
- ◆ City Council not open & honest with the public
- ◆ Lack of street trees
- ◆ Better communication between City depts. & neighborhoods

Things the **City** should do:

- No sidewalks at old businesses
- Hedges at corners blocking visibility
- Traffic Safety: Poor traffic flow results in shortcuts thru residential streets, delivery trucks, speeding and poor pedestrian environment
- Traffic/safety: school-related traffic
- Basketball standards block sidewalks
- Funding for neighborhood improvements is impacted by River Park Square.
- City should enforce its laws and ordinances
- City should maintain infrastructure with current revenues—no new taxes
- Economic Development, we need commercial vitality, good paying jobs in a variety of industries and professions
- Street cleaners raise dust

Conclusions

The Assessment Report is a tool for neighborhoods to use as they begin to analyze and address neighborhood issues. The intent is that your neighborhood will determine for itself which issues residents want to address and what steps they will take.

Your neighborhood may prioritize issues based on the Assessment Matrix or conduct further research into those issues. A strategy should be developed for each issue, action should be taken, the issue resolved, and then the same process used to address the next issue in the neighborhood. It is important to remember that an assessment is just the first step to positive changes in a neighborhood.

The Neighborhood Planning Guidebook is available to help in the process of engaging all of your fellow neighbors for these very important projects. The Guidebook also assists with further analysis of identified issues, and steps for addressing them. Your neighborhood is encouraged to take advantage of this resource and your resources at City Hall, including the Community Assembly, the Community Development Board, and others.

The City is currently in the process of addressing many of the issues stated in “Things the City should do”. For example, the Comprehensive Plan adopted in 2001 addresses the issues of police response, drug houses, increased single family home ownership, air and water pollution, and increased coordinated planning on large projects. Much work remains to be done to implement the goals and policies of the Plan. The City hopes that the neighborhoods will work as partners to address issues the City cannot directly address. Together it is hoped that we can make Spokane a place where people have the opportunity to work, play, and shop close to home, a true City of Neighborhoods.

Nevada - Lidgerwood Assessment Participants

Jason Delp	Tom Luce
Jo Rask	Bob Vanderlinden
Sandy Smith	Deborah Grenehalzhe
Pat Grow	Shockley
Liz Jesser	Julie & Joe Griffin
Mary & Kevin Anderson	Jim King
Judy Bensen	Dave Jeschka
Victor Buksbazen	Geraldine Krell
Shirley Chase	Gloria Loeffler
Brian Cox	Robert D & Robert Massie
Adam Eggleston	Dorothy Mehl
Dennis Gagoin	Tom & Sue Millersmith
Marge Ivanis	Clark Mills
Winnie Schmidt	Cathy Simchuk
Linda and Royce Cuneo	Terry Slocum
Mickey Thompson	Pam Woodley
Harlan Douglass	

City Planning Services Department

Steve Franks, *Interim Director Planning Services*

Marla Bates, Susanne Croft, Leroy Eadie, Melissa Wittstruck, Jo Anne Wright, and Kathrine Fossett, *Neighborhood Planning Team*

City Support

Candace Mumm, *Plan Commission President*

Paul Crutchfield, *Parks and Recreation Department*

Kevin Brownlee and Dale Strom, *Community Development*

Val Melvin, *Engineering Services*

Christopher Cafaro, *Street Department*

Dan Eaton, *Engineering Services*

Marietta McKelvey and John Henry, *Code Enforcement*

Gail Mackie, *Spokanimal*

David Lund, *Spokane Police Department*

Wendy Hise, *MIS*

Update on 1/25/2005
Appendix B

Nevada - Lidgerwood Assessment Report

Issues		Operational/Service Delivery						Comprehensive Plan				Neighborhood Solution	Current Community Issue	Staff Notes: More Info/ Issue ID	
Description	Category that Applies*	Police/ Fire/Safety	Infrastructure Maintenance	Code Enforcement	Human Services	Street Design	Other -- Identify	Addressed by Comprehensive Plan		Inconsistent with Comp Plan	Not covered by Comp Plan				
								Implemented Policy	Not Implemented Policy						
Neighborhood would like more information about proposed developments and opportunity to work with developers. Also need to know what types of projects they will be notified on.							ONS/Planning Outreach (Building Blocks)	LGC 4.1							Nghd not sure what projects they are notified on. Not sure of nghd role for input.
Unmaintained rental property				X			ONS-liasion to Code Enforcement/ Education		LGC 7.1				Neighborhood direct CA rep to address with task force	Community Assembly currently forming Code Enforcement Task Force	
Hill N' Dale Rotary Park is unsafe		X					ONS liasion to Parks & Rec.						Nghd work with COPS, use ONS to interface with Parks & Rec if necessary		Vandalism, not well-lit
Lack of facilities for youth; sports, skateboards; give youth something to do.							ONS liasion to Youth, Parks & Rec		SH 1.2, SH 3.6				Neighborhood to work with ONS, Youth, Parks & Rec to develop youth activities/facilites. Use CD funds?		
No sidewalks at old businesses									N 4.11, TR 2.7, TR 2.6				Nghd choose to use CD Funds, partner with businesses, try to form BIDs		
City doesn't enforce sidewalk shoveling				X									Neighborhood to educate citizens, look for partners at Jr. High and High Schools to help		

BE: Built Environment
NE: Natural Environment
S: Social

P: Political
ED: Economic Development
C: Communications

Update on 1/25/2005
Appendix B

Nevada - Lidgerwood Assessment Report

Issues		Operational/Service Delivery						Comprehensive Plan			Neighborhood Solution	Current Community Issue	Staff Notes: More Info/ Issue ID	
Description	Category that Applies*	Police/ Fire/Safety	Infrastructure Maintenance	Code Enforcement	Human Services	Street Design	Other -- Identify	Addressed by Comprehensive Plan	Inconsistent with Comp Plan	Not covered by Comp Plan				
								Implemented Policy	Not Implemented Policy					
Ice on sidewalks from City plows			X				ONS/Plowing		TR 4.18			Neighborhood, ONS to work with Street Maintenance on solutions		
Hedges at corners blocking visibility				X					TR 4.21			Neighborhood to talk to property owners where possible. Work with ONS & Code enforcement.		
Traffic Safety: Poor traffic flow results in shortcuts thru residential streets, delivery trucks, speeding and poor pedestrian environment							Eng. Services, Streets, Planning		TR 5.6, TR 5.4, TR 5.1, TR 4.12, TR 4.2, TR 1.1, TR 2.6			Neighborhood Plan		
Unreliable bus system affects everyone, limits mobility for elderly	BE, S				X		Human Services		TR 1.1			Neighborhood work with STA	Transit tax proposal	
Crossing Division Street to get to Franklin Park is impossible	BE, S						Streets, Eng. Services		TR 2.10, N 8			Neighborhood Plan		
North-South freeway negative impacts	BE, S						Eng. Services, Planning		TR 8			Neighborhood tp participate with City, WSDOT, SRTC	NE Spokane & 291 Transportation Study	
Traffic/safety: school-related traffic	S, BE						Streets; Eng. Services		N 4.14			Neighborhood work with District 81		
Vandalism/graffiti	BE, E	X										Neighborhood work with, COPS & District 81		

BE: Built Environment
NE: Natural Environment
S: Social

P: Political
ED: Economic Development
C: Communications

Update on 1/25/2005
Appendix B

Nevada - Lidgerwood Assessment Report

Issues		Operational/Service Delivery						Comprehensive Plan			Neighborhood Solution	Current Community Issue	Staff Notes: More Info/ Issue ID	
Description	Category that Applies*	Police/ Fire/Safety	Infrastructure Maintenance	Code Enforcement	Human Services	Street Design	Other - Identify	Addressed by Comprehensive Plan		Inconsistent with Comp Plan				Not covered by Comp Plan
								Implemented Policy	Not Implemented Policy					
Lack of involvement from neighborhood residents. Residents need to get to know one another, reach out to youth & schools, elderly, citizens, & businesses for their involvement & participation. (7 dots)	S, C				X		ONS	LGC 1.3	LGC 1.2, LGC 1.1			Nevada-Lidgerwood Neighborhood Council		
Need more housing choices, especially for the elderly; need more than single-family houses and retirement homes.	S, BE				X		Human Services, Planning		H 2.1, H 2.2, H 2.5, H 2.6, DP 3.9, SH 4.1, N 8			Neighborhood Planning		
Neighborhood Safety: Clean, safe parks, too many thefts and burglaries, lack of Block Watch, rolling drug deals	S	X		X	X				SH 6.1			Neighborhood work with COPS, ONS, Human Services, Youth		Need more info.
We have lack of pride & ownership which show in home & yard care.	S, P?				X		ONS, Community Development		H 3.2, H 3.1, H 3.3			Neighborhood work with Code Enforcement, ONS, housing agencies.		
Closest commercial center is 2-4 miles away.								Planning	N 8			Neighborhood Planning		
Limited social services within neighborhood	S, BE						Community Development, Northeast Community Center					Nevada-Lidgerwood NC to address		
Basketball standards block sidewalks.	S	X		X								NC undertake public education campaign		Are other forms of bb stands available? What does Code E. do now?

BE: Built Environment
NE: Natural Environment
S: Social

P: Political
ED: Economic Development
C: Communications

Update on 1/25/2005
Appendix B

Nevada - Lidgerwood Assessment Report

Issues		Operational/Service Delivery						Comprehensive Plan			Neighborhood Solution	Current Community Issue	Staff Notes: More Info/ Issue ID	
Description	Category that Applies*	Police/Fire/Safety	Infrastructure Maintenance	Code Enforcement	Human Services	Street Design	Other -- Identify	Addressed by Comprehensive Plan		Inconsistent with Comp Plan				Not covered by Comp Plan
								Implemented Policy	Not Implemented Policy					
Revenue from north side doesn't match resources allocated for north side.	P						City Council/ Mayor					NC to address with City Council and Administration	Currently, City revenues are an issue in general for Mayor & Council.	?
Neighborhood Councils lack credibility in decisionmaking process.	P						ONS		LGC 2, 3 and 4			Nevada-Lidgerwood Neighborhood Council to address		Neighborhood Council should seek clarification
City Council not open & honest with the public.	P, C								LGC 4.1, 4.2, 4.5, LGC 7			Citizens and/or Neighborhood Council to address as they see appropriate		Neighborhood Council should seek clarification
Funding for neighborhood improvements is impacted by Riverpark Square.	P											Individuals deal with as they see appropriate		Neighborhood Council should seek clarification
City should enforce its laws and ordinances.	P, C	X		X					LGC 7.1			Citizens and/or Neighborhood Council to address as they see appropriate		Neighborhood Council should seek specificity
City should maintain infrastructure with current revenues--no new taxes.	P											Individuals deal with as they see appropriate	Attend Mayor's meetings on streets	
Economic Development, we need commercial vitality, good paying jobs in a variety of industries and professions	E						Economic Dev.		ED 3.2, ED 3.3, 4.1, 4.3				Mayor's Econ. Dev. Division initiative	
Loud music late at night, barking dogs, abandoned vehicles on vacant lots, vehicles "for sale" at curb for long periods of time	NE, S	X						ONS				Nevada-Lidgerwood NC to work with ONS, COPS and Code Enforcement.		

BE: Built Environment
NE: Natural Environment
S: Social

P: Political
ED: Economic Development
C: Communications

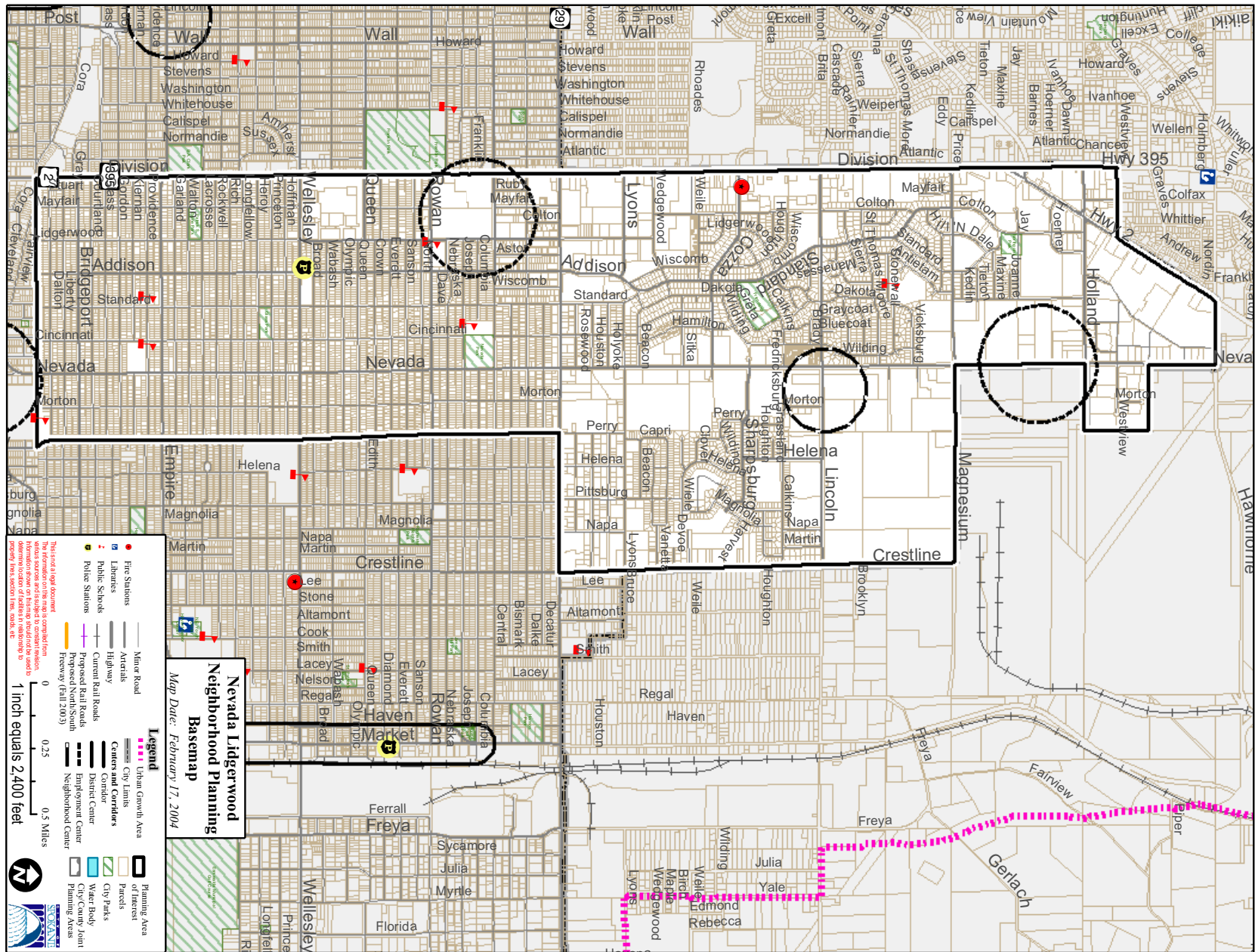
Update on 1/25/2005
Appendix B

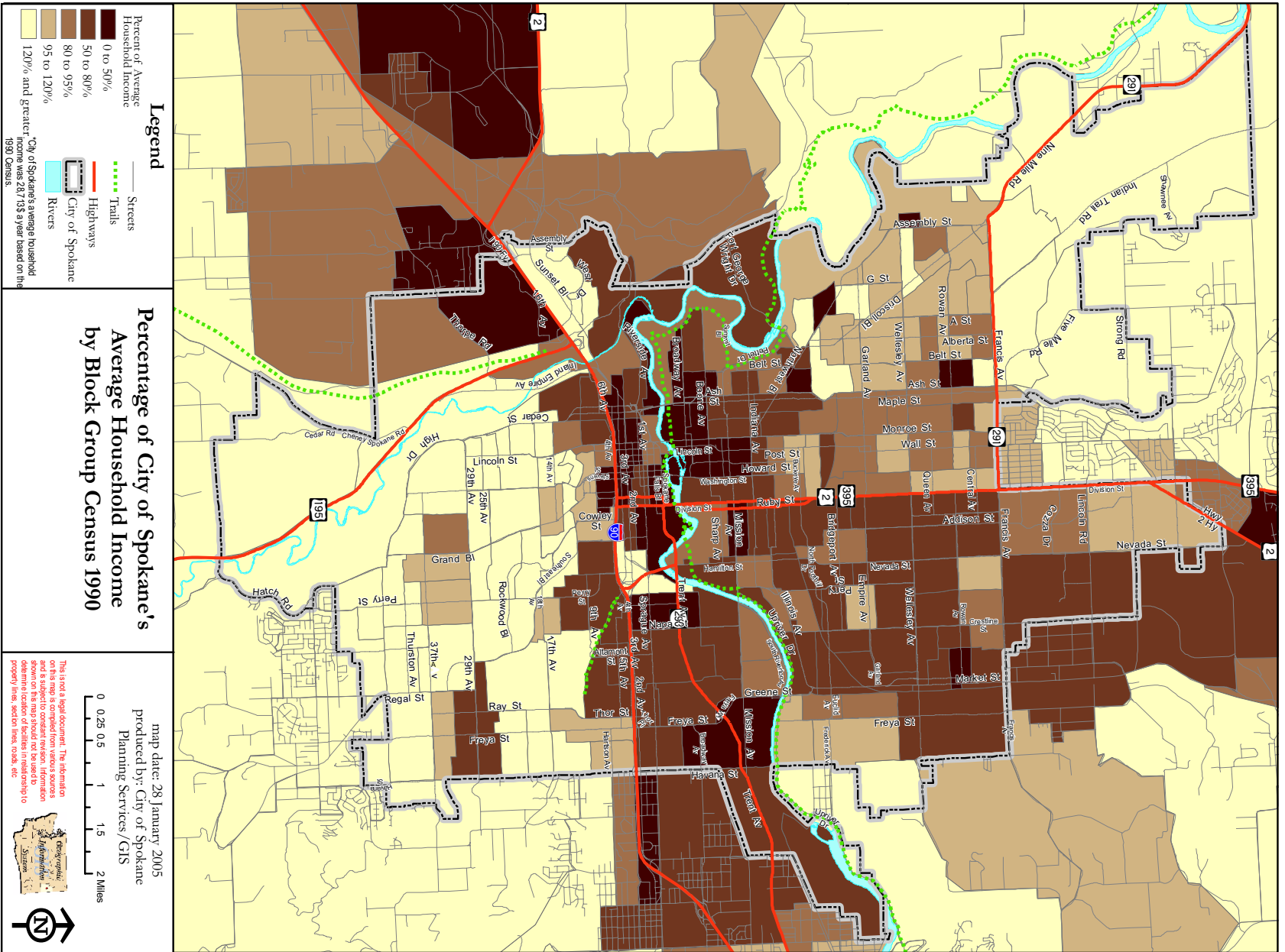
Nevada - Lidgerwood Assessment Report

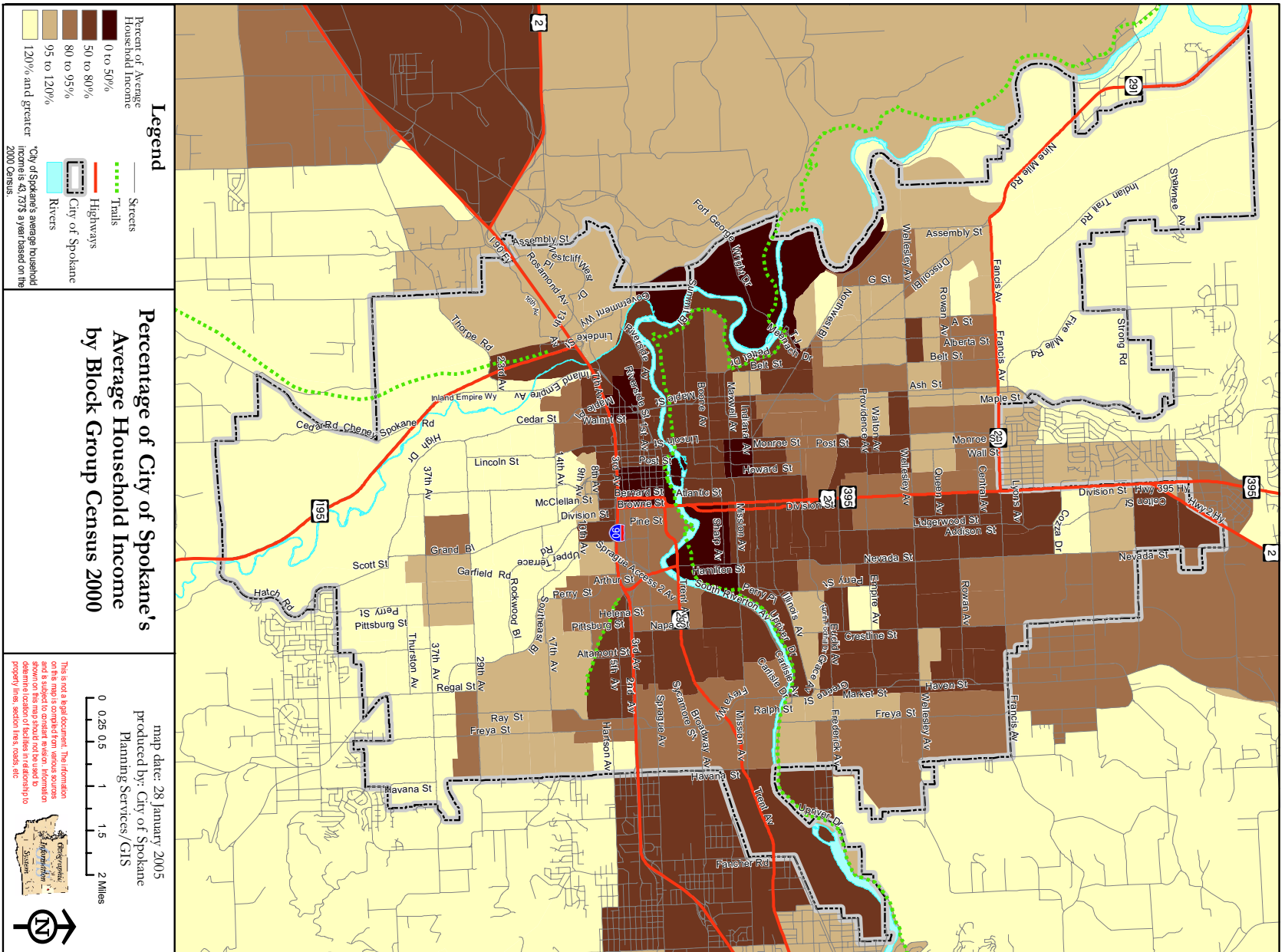
Issues		Operational/Service Delivery						Comprehensive Plan			Neighborhood Solution	Current Community Issue	Staff Notes: More Info/ Issue ID	
Description	Category that Applies*	Police/ Fire/Safety	Infrastructure Maintenance	Code Enforcement	Human Services	Street Design	Other - Identify	Addressed by Comprehensive Plan		Inconsistent with Comp Plan				Not covered by Comp Plan
								Implemented Policy	Not Implemented Policy					
Street cleaners raise dust.	NE, S							ONS liaison to Street Maintenance				Nevada- Lidgerwood NC to address		
Lack of street trees.	NE					X	Planning		TR 7.3, NE 12.1, TR 4.12, TR 7.4				Neighborhood Planning; city may join Conservation District	
Better communication between City depts. & neighborhoods.	C, P?						ONS, other depts.		LGC4.1, 4.2, 4.3, 4.4			Neighborhood Council to pursue.		
Lack of awareness of the neighborhood; need positive marketing.	C, P?											Neighborhood Council to pursue.		

BE: Built Environment
NE: Natural Environment
S: Social

P: Political
ED: Economic Development
C: Communications







Arts

Karen R. Mobley
 Arts Director
 Spokane Arts Commission
 (509) 625-6079 office
 (509) 625-6777 fax
 E-mail: kmobley@spokanecity.org

Building Department

Terry Danzer
 City Hall
 625-6140

Capital Programs

Dick Raymond 625-6398 or
 Jerry Sinclair 625-6417

Community Development

Kevin Brownlee
 6th Floor
 625-6816

Engineering Services, Transportation

Val Melvin
 625-6434

Engineering Services, Street Operations

Scott Egger
 625-6421

Fire

Bobby Williams
 Fire Chief
 44 West Riverside Avenue Spokane, WA 99201
 625-7030

Historic Preservation

Teresa L. Brum
 Spokane City-County Historic Preservation Director
 (509) 625-6983

Human Services

June B. Shapiro, Director
 Tel: 509-625-6130
 Fax: 509-625-6777
 E-mail: jshapiro@spokanecity.org

Libraries

Jan Sanders, Director
 Spokane Public Library
 906 West Main Street
 Spokane, WA 99201
 509 444-5305
 E-mail: jsanders@spokanelibrary.org

Neighborhood Services

Gregory Hecht, Interim Director
 6th Floor
 625-6269 FAX: 625-6817
 E-mail: ghecht@spokanecity.org

Parks and Recreation

Paul Crutchfield
 625-6455
 E-mail: pcrutchfield@spokanecity.org

Police

Jim Nicks, Asst. Chief Spokane Police
 1100 W. Mallon
 Spokane, WA 99260
 (509) 625-4026

Solid Waste Management

Paul Staeheli
625-7889

Spokane Transit Authority (STA)

Ryan Stewart
Transit Planner
Spokane Transit Authority
1230 W. Boone Avenue
Spokane, WA 99201
509-325-6059
FAX: 509-325-6050
E-mail: RStewart@spokanetransit.com

Wastewater

Dale Arnold
625-7901

Water

Brad Blegen, Director
914 East North Foothills Drive 99207
625-7820
E-mail: bblegen@spokanecity.org

Youth

Joanne Benham, Director
Spokane City/County Youth Department
(509) 625-6440
(509) 625-6777 (Fax)
E-mail: jbenham@spokanecity.org

1990 Census

1990 Census Summary													
NAME	Total housing units	Owner occupied units	renter occupied	persons living in owner occupied units	persons living in renter occupied units	value of owner occupied housing units with a mortgage	value of owner occupied units with out a mortgage	aggregate household income in owner occupied with mortgage	aggregate household income in owner occupied without mortgage	aggregate household income in renter occupied	Total pop	total # families	total households
Balboa\South Indian Trail	1,973	1,700	234	4,702	461	\$97,334,926	\$34,938,263	\$61,584,008	\$20,573,336	\$7,435,411	5,236	1,621	1,963
Brownes Addition	1,463	80	1,238	134	1,746	\$1,088,486	\$2,538,069	\$2,053,130	\$875,384	\$20,661,475	1,935	297	1,290
Chief Garry Park	2,470	1,027	1,269	2,476	2,856	\$21,151,761	\$15,230,543	\$17,090,462	\$9,514,347	\$23,126,360	5,360	1,308	2,322
East Central	4,678	2,305	1,922	5,404	4,972	\$51,917,993	\$35,309,894	\$43,072,150	\$21,501,970	\$29,918,083	10,742	2,547	4,178
Five Mile Prairie	368	330	27	942	63	\$19,661,041	\$10,868,531	\$13,578,850	\$5,189,448	\$732,340	1,029	303	332
Hillyard	3,557	2,035	1,274	5,293	2,910	\$42,463,831	\$32,024,430	\$34,191,286	\$18,245,159	\$19,492,187	8,275	2,098	3,315
Logan	4,099	1,413	2,368	3,734	4,211	\$26,840,537	\$31,154,166	\$22,476,816	\$15,249,802	\$35,754,253	9,090	1,606	3,787
Nevada - Lidgerwood	9,268	4,234	4,606	10,383	9,405	\$121,147,779	\$61,385,449	\$91,139,563	\$35,477,270	\$83,493,040	20,183	5,105	8,905
North Indian Trail	835	729	91	2,389	197	\$58,931,558	\$8,065,057	\$35,817,187	\$3,582,834	\$3,481,461	2,587	761	825
Northwest	8,871	6,878	1,749	17,039	4,214	\$233,970,076	\$122,386,232	\$159,517,240	\$66,765,935	\$42,618,813	21,573	6,202	8,664
West Central	3,068	1,267	1,457	2,756	3,511	\$17,725,073	\$20,223,624	\$16,550,500	\$14,820,100	\$19,698,404	6,779	1,521	2,757
Spokane City 1990	79,875	39,012	32,103								177,196	44,976	75,252

Nevada-Lidgerwood Neighborhood

Nevada - Lidgerwood 2000 Census

Nevada - Lidgerwood Neighborhood 2000 Census Summary Report Detailed				
	Nevada - Lidgerwood	NL %	City of Spokane	City %
Population	22,138	100.0%	195,629	100.0%
Percent of City's Population	11%			
Race Distribution	Nevada - Lidgerwood	NL %	City of Spokane	City %
<i>White</i>	19,525	88%	175,018	90%
<i>Black/African American Alone</i>	528	2%	4,052	2%
<i>American Indian and Alaska Native Alone</i>	396	2%	3,444	2%
<i>Asian Alone</i>	539	2%	4,399	2%
<i>Native Hawaiian and Other Pacific Islander alone</i>	77	0%	372	0%
<i>Some other races alone</i>	204	1%	1,727	1%
<i>two or more races</i>	870	4%	6,617	3%
Age Distribution	Nevada - Lidgerwood	NL %	City of Spokane	City %
<i>under age 18</i>	5,487	25%	54,758	28%
<i>between 18 and 65</i>	13,558	61%	113,570	58%
<i>over age 65</i>	3,096	14%	27,301	14%
Housing Occupancy	Nevada - Lidgerwood	NL %	City of Spokane	City %
<i>Total housing units</i>	10,293	100%	87,941	100%
<i>Occupied</i>	9,526	93%	81,512	93%
<i>Vacant</i>	767	8%	6,429	7%
Housing Tenure	Nevada - Lidgerwood	NL %	City of Spokane	City %
<i>Occupied housing units</i>	9,526	100%	81,512	100%
<i>Owner Occupied</i>	4,413	46%	47,915	59%
<i>Renter Occupied</i>	5,113	54%	33,597	41%
Households	Nevada - Lidgerwood	NL %	City of Spokane	City %
<i>Total Households</i>	9,526	100%	81,512	100%
<i>Avg. household size</i>	2.27		2.32	
<i>Avg. family size</i>	2.96		2.98	
Households By Type	Nevada - Lidgerwood	NL %	City of Spokane	City %
<i>Family households</i>	5,172	54%	47,256	58%
<i>Married-couple family</i>	3,279	34%	33,704	41%
<i>with children under 18</i>	1,545	16%	14,987	18%
<i>Female householder</i>	1,421	15%	10,134	12%
<i>with children under 18</i>	973	10%	6,806	8%
<i>Nonfamily households</i>	1,421	15%	34,256	42%

Nevada - Lidgerwood 2000 Census

Median Value of Owner-Occupied Homes	Nevada - Lidgerwood		City of Spokane	
<i>Median Value of Owner-Occupied Homes</i>			\$97,000	
Age of Housing Units	Nevada - Lidgerwood	NL %	City of Spokane	City %
<i>built before 1940</i>	1,489	14%	25,540	29%
<i>between 1940-1989</i>	7,666	74%	53,392	61%
<i>built between 1990-2000</i>	1,152	11%	9,162	11%
	Nevada - Lidgerwood	NL %	City of Spokane	City %
Median Household Income			\$32,273	
<i>Per Capita Income (dollars)</i>	\$15,706		\$18,451	
Nevada - Lidgerwood Neighborhood 2000 Census Summary Report Social				
School Enrollment	Nevada - Lidgerwood	NL %	City of Spokane	City %
Population 3 yrs and over enrolled in school	5,633	100%	53,367	100%
<i>Nursery school, preschool</i>	417	7%	3,187	6%
<i>Kindergarten</i>	359	6%	2,951	6%
<i>Elementary school (grades 1-8)</i>	2,217	39%	20,887	39%
<i>High school (grades 9-12)</i>	1,136	20%	11,122	21%
<i>College or graduate school</i>	1,504	27%	15,220	29%
	Nevada - Lidgerwood	NL %	City of Spokane	City %
Educational Attainment	Nevada - Lidgerwood	NL %	City of Spokane	City %
Population 25 yrs and over	13,660	100%	126,106	100%
<i>Less than 9th grade</i>	578	4%	3,946	3%
<i>9th grade to 12th grade, no diploma</i>	1,714	13%	11,106	9%
<i>High school graduate (includes equivalency)</i>	4,357	32%	33,177	26%
<i>Some college, no degree</i>	3,624	27%	33,666	27%
<i>Associate degree</i>	1,574	12%	12,219	10%
<i>Bachelor's degree</i>	1,318	10%	20,392	16%
<i>Graduate or professional degree</i>	495	4%	11,600	9%
<i>Percent high school graduate or higher</i>		83%		88%
<i>Percent bachelor's degree or higher</i>		13%		25%
	Nevada - Lidgerwood	NL %	City of Spokane	City %
Marital Status	Nevada - Lidgerwood	NL %	City of Spokane	City %
Population 15 yrs and over	17,460	100%	155,970	100%
<i>Never married</i>	5,176	30%	43,725	28%
<i>Now married, except separated</i>	8,185	47%	75,355	48%
<i>Separated</i>	376	2%	2,978	2%
<i>Widowed</i>	1,706	10%	11,654	8%
<i>female</i>	1,470	8%	9,572	6%
<i>Divorced</i>	2,843	16%	22,258	14%
<i>female</i>	1,743	10%	13,410	9%

Nevada - Lidgerwood 2000 Census

Residence in 1995	Nevada - Lidgerwood	NL %	City of Spokane	City %
Population 5 yrs and over	20,407	100%	182,420	100%
<i>Same house in 1995</i>	8,750	43%	87,518	48%
<i>Different house in the U.S. in 1995</i>	11,656	57%	90,277	50%
<i>Same county</i>	7,714	38%	58,605	32%
<i>Different county</i>	3,402	17%	31,672	17%
<i>Same state</i>	1,529	8%	13,263	7%
<i>Different state</i>	1,873	9%	18,409	10%
<i>Elsewhere in 1995</i>	540	3%	4,625	3%
Language Spoken at Home	Nevada - Lidgerwood	NL %	City of Spokane	City %
Population 5 yrs and over	20,407	100%	182,420	100%
<i>English only</i>	18,625	91%	168,044	92%
<i>Language other than English</i>	1,782	9%	14,376	8%
<i>Speak English less than "very well"</i>	813	4%	6,497	4%
<i>Spanish</i>	308	2%	3,542	2%
<i>Speak English less than "very well"</i>	97	1%	1,053	1%
<i>Other Indo-European languages</i>	767	4%	7,087	4%
<i>Speak English less than "very well"</i>	354	2%	3,599	2%
<i>Asian and Pacific Island languages</i>	583	3%	3,215	2%
<i>Speak English less than "very well"</i>	309	2%	1,635	1%
Nevada - Lidgerwood Neighborhood 2000 Census Summary Report Economic				
Employment Status	Nevada - Lidgerwood	NL %	City of Spokane	City %
Population 16 yrs and over	17,212	100%	153,402	100%
<i>In labor force</i>	11,046	64%	98,512	64%
<i>Civilian labor force</i>	10,999	64%	97,811	64%
<i>Employed</i>	10,164	59%	89,043	58%
<i>Unemployed</i>	834	5%	8,768	6%
<i>Armed Forces</i>	47	0%	701	1%
<i>Not in labor force</i>	6,166	36%	54,890	36%
<i>All parents in family in labor force</i>	1,874	34%	9,726	62%
Occupation	Nevada - Lidgerwood	NL %	City of Spokane	City %
<i>Management, professional, and related occupations</i>	2,296	22%	28,838	32%
<i>Service</i>	2,198	22%	16,653	19%
<i>Sales and office</i>	3,266	32%	25,358	29%
<i>Farming, fishing, and forestry</i>	40	0%	318	0%
<i>Construction, extraction, and maintenance</i>	767	7%	7,011	8%
<i>Production, transportation, and material moving</i>	1,596	16%	10,865	12%
	Nevada - Lidgerwood	NL %	City of Spokane	City %

Nevada - Lidgerwood 2000 Census

Commuting to Work				
<i>Mean travel time to work (minutes)</i>	21		19.5	
Income 1999				
<i>Per capita income (dollars)</i>	\$15,706		\$18,451	2.73%
Poverty Status in 1999				
<i>Families</i>	803	15%	5,342	11%
Park/Open Space	Nevada - Lidgerwood acres	NL LOS	City Wide acres	Comp Plan LOS
Arboretum			64.89	0.02
Art Center			0.14	0.00
Community And Senior Centers			8.10	0.00
Community Parks	26.81	1.21	334.68	1.49
Conservation Land		0.00	828.05	0.30
Golf Courses		0.00	690.27	0.25
Major Parks	0	0.00	332.02	2.59
Mini-Park		0.00	0.87	0.00
Neighborhood Mini-Parks	0	0.00	3.77	0.03
Neighborhood Parks	40.40	1.82	275.24	1.17
Parkways		0.00	88.67	0.03
Sports Complexes	15.19	0.69	64.92	0.02
Swimming Pools		0.00	2.10	0.00
Trails		0.00	51.16	0.02
Total Acres/LOS		3.72	2,744.88	5.28
Neighborhood Population	22,138			
City Population	195,629			
LOS is the acres of park per 1,000 residents				
Park Name	Type of Park	Acers of Park		
Northpoint Park	Neighborhood Parks	11.79		
Friendship Park	Neighborhood Parks	11.79		
Nevada Park	Neighborhood Parks	9.57		
Glass Park	Neighborhood Parks	3.64		
Byrne, Patrick S. Park	Neighborhood Parks	3.61		
Franklin Park	Community Parks	26.81		
Franklin Sports Complex	Sports Complexes	15.19		
	Total Acres	82.40		

Code Enforcement

Yearly New Complaints by Month																	
	1996		1997		1998		1999		2000		2001		2002		2003		2004
Jan	323	Jan	210	Jan	195	Jan	116	Jan	131	Jan	139	Jan	224	Jan	164	Jan	146
Feb	212	Feb	247	Feb	188	Feb	174	Feb	208	Feb	221	Feb	140	Feb	290	Feb	186
Mar	208	Mar	237	Mar	311	Mar	231	Mar	272	Mar	199	Mar	212	Mar	255	Mar	283
Apr	197	Apr	303	Apr	258	Apr	226	Apr	288	Apr	321	Apr	304	Apr	345	Apr	349
May	260	May	348	May	315	May	211	May	282	May	305	May	310	May	294	May	314
Jun	356	Jun	285	Jun	300	Jun	215	Jun	206	Jun	341	Jun	328	Jun	330	Jun	348
Jul	231	Jul	353	Jul	391	Jul	270	Jul	279	Jul	284	Jul	346	Jul	394	Jul	372
Aug	258	Aug	253	Aug	279	Aug	344	Aug	323	Aug	330	Aug	398	Aug	286	Aug	304
Sep	291	Sep	289	Sep	263	Sep	190	Sep	219	Sep	303	Sep	319	Sep	257	Sep	220
Oct	352	Oct	245	Oct	266	Oct	166	Oct	197	Oct	326	Oct	305	Oct	242	Oct	251
Nov	251	Nov	167	Nov	198	Nov	153	Nov	228	Nov	165	Nov	209	Nov	201	Nov	171
Dec	210	Dec	70	Dec	170	Dec	176	Dec	181	Dec	155	Dec	160	Dec	233	Dec	
New Complaints 2004																	
	Vacant Bldgs.	Cars	Solid Waste	Zoning	Misc.												
JAN	13	14	61	25	33												
FEB	14	23	89	22	38												
MAR	16	38	163	29	37												
APR	16	66	185	47	35												
MAY	22	64	142	38	48												
JUNE	30	53	129	54	82												
JULY	12	31	142	59	128												
AUG	17	42	134	33	78												
SEPT	13	30	107	28	42												
OCT	18	20	113	55	45												
NOV	14	23	80	26	28												
TOTAL	185	404	1345	416	594												
Area 4- Dave Lok																	
	New	Fld. Insp.	Enf. Ord.	Completed													
Buildings	15	20	8	13													
Cars-Prop	62	86	53	59													
Solid Waste	176	415	261	179													
Zoning	59	122	42	54													
Misc	64	113	65	56													
Totals	376	756	429	361													
Number of New Complaints per Area 2004																	
	Area	# Complaints															
	Area 1	506															
	Area 2	581															
	Area 3	379															
	Area 4	376															
	Area 5	424															
NEW COMPLAINTS 2004																	
	Area 4	City-Wide	Area 4	CityWide	Area 4	CityWide											
Building	15	158			0	1											
Cars-Private	62	351			1	2											
Solid Waste	176	1,112			4	6											
Zoning	59	355			1	2											
Misc.	64	543			1	3											
Totals	376	2,519			8	13											
Population			47,203	195,629													

ANIMAL CONTROL FIELD REPORT
SPOKANIMAL C.A.R.E.
2nd Quarter 2004

ANIMALS HANDLED	2004	DOGS2003	2004	CATS2003	2004	OTHER 2003
OWNED PICKED UP	31	69	22	39	0	0
STRAY PICKED UP	524	46	295	237	48	61
TOTAL	555	536	317	276	48	61
DOA PICKED UP	26	23	116	105	64	73

FIELD REPORT	2004	2003
CALLS RESPONDED TO	3886	4007
SERVICE CALL	31	21
RESCUE	2	8
INVESTIGATIONS	389	292
INSPECTIONS	1	6
OTHER	52	69
TOTAL	4361	4403

GENERAL INFORMATION

NOTICES OF VIOLATION	148	160
LICENSES SOLD	872	855
CITATIONS ISSUED	36	46
BARKING COMPLAINTS	128	90
ZONING COMPLAINTS	9	16
INTERVIEWS	114	4926
BITE CASE	114	82
AFTER HOURS CALLS	35	37

DOGS RETURNED TO OWNER	114	93
CATS RETURNED TO OWNER	0	0

Nevada-Lidgerwood Neighborhood

Calls for Service 2003

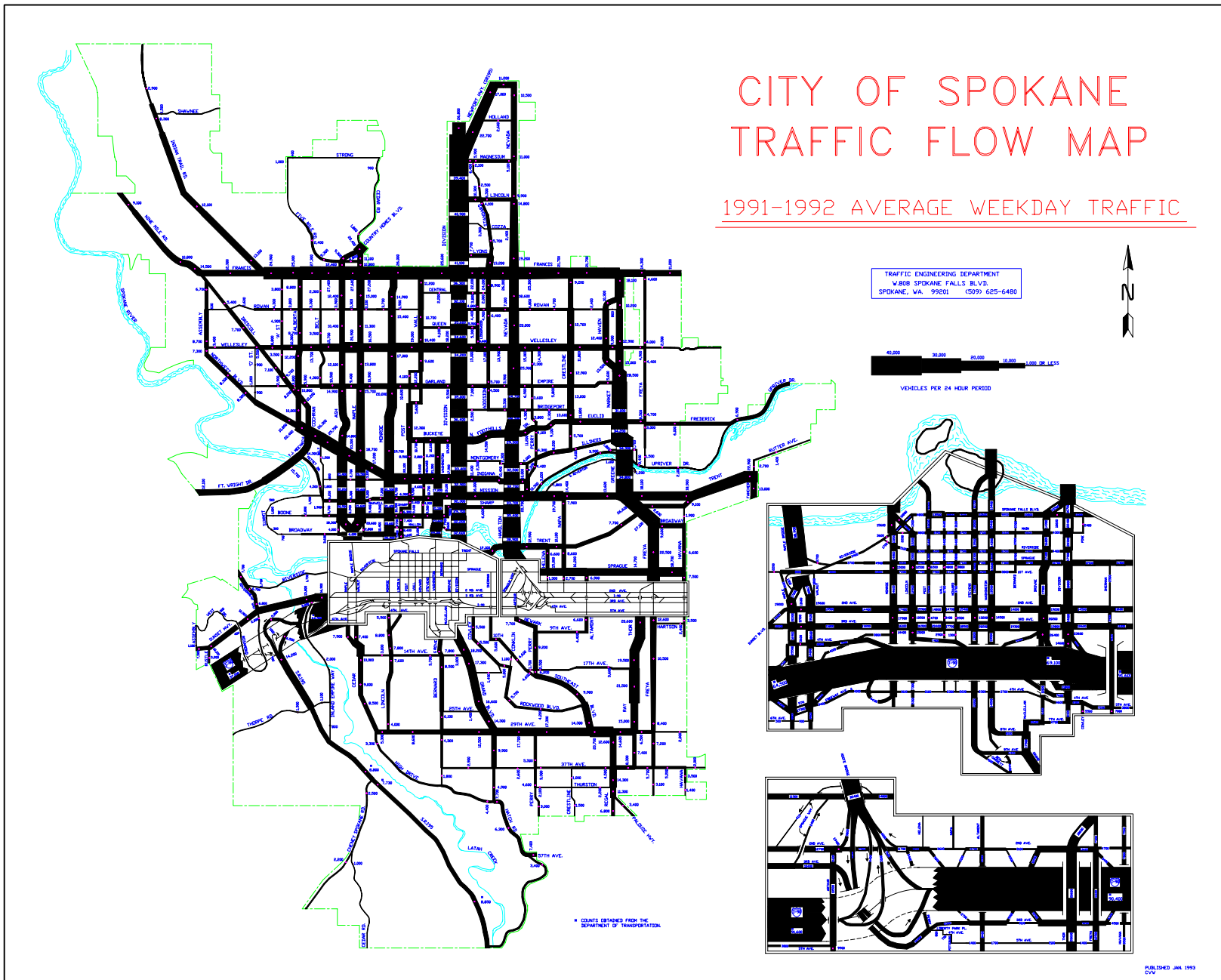
Calls for Service - Spokane PD - 2003																										
NAME	CATEGORY																									
	"Broken Windows"	Administrative Details	Alarms	Arrest Functions	Civil	Deprivation of Liberty	Domestic/Family Violence	Emergency Responders	Informational Reports	Juvenile	Mental/Substance	Missing/Endangered Persons	Noise Disturbance	Nuisance Person	Order Disturbance	Property Damage	Public Decency	Sex Crimes	Special Response Teams	Suspicious Circumstances	Theft	Traffic/Parking	Vice Crimes	Violence	Grand Total	
	2	31	618	180	126	8	168	263	356	443	82	50	272	201	70	252	280	19	19	5	357	781	1,402	47	140	6,172
Balboa/South Indian Trail		2	63	106	16		32	56	291	75	179	22	84	51	19	54	107	5	9		107	250	240	15	64	1,847
Bemiss	3	31	320	86	85	5	260	438	604	331	147	50	252	294	68	453	342	10	25		496	978	544	92	189	6,103
Brownes Addition	1	12	107	57	27	2	70	136	268	112	33	56	109	98	91	214	58	29	6	1	180	409	141	56	83	2,356
Chief Garry Park	1	26	294	234	104	11	182	394	535	297	88	74	245	240	91	446	179	17	21	1	391	904	531	68	189	5,563
CliffCannon	1	14	531	233	169	12	229	386	804	390	199	207	389	368	122	651	231	15	75	4	543	1,285	923	112	281	8,174
Comstock	1	3	98	244	23	1	52	88	311	126	61	19	77	94	19	139	105	7	4		158	373	210	21	39	2,273
East Central	2	48	836	752	221	35	400	843	1,159	766	329	163	574	382	263	1,206	432	40	36	12	1,083	2,256	1,811	290	449	14,388
Emerson/Garfield		36	499	441	147	13	328	657	745	543	178	116	454	386	223	780	464	15	29	6	806	1,968	988	134	351	10,307
Five Mile/Prairie		1	9	50	1		12	6	23	11	2	1	7	19	1	7	14	1	1	1	17	31	14	1	1	231
Hillyard	2	28	325	198	91	3	199	419	447	342	86	59	220	346	114	539	244	15	12	4	465	952	404	86	204	5,804
Latah Valley		5	51	77	2	2	29	55	132	52	12	11	35	22	10	46	26	1	3		46	130	171	4	18	940
Lincoln Heights		11	241	298	51	4	181	289	728	313	42	37	181	221	60	354	299	11	16		459	922	605	41	105	5,469
Logan	2	29	372	386	91	3	253	373	815	462	75	93	311	345	168	513	284	33	10	2	588	1,730	1,022	86	183	8,229
Manito/Cannon Hill		2	56	147	5	4	24	27	168	61	25	9	44	92	16	74	108	8	3		130	235	128	7	12	1,385
Moran Prairie		5	84	154	7	2	40	66	207	84	32	15	51	95	24	70	94		6		142	265	133	7	27	1,610
Nevada/Lidgerwood	5	68	997	650	227	22	673	1,277	1,951	1,251	248	197	658	924	259	1,419	699	36	67	12	1,352	4,016	1,948	187	653	19,796
North Hill	1	29	353	289	49	5	217	401	653	397	105	74	246	297	85	465	369	21	15	7	620	1,284	1,184	85	157	7,408
North Indian Trail		4	45	96	2		30	45	109	74	34	7	27	77	12	56	61	2	3	2	71	146	118	6	18	1,045
Northwest	1	31	431	301	115	5	279	487	1,068	468	121	102	318	421	102	436	367	18	20	4	633	1,566	934	85	177	8,490
Peaceful Valley		2	8	5	2		4	8	25	6	6	1	8	25	22	12	7	7			22	14	7	4	6	201
Riverside	3	13	639	667	183	4	263	280	1,587	706	152	333	693	163	634	1,117	284	61	27	7	671	1,870	1,548	260	651	12,816
Rockwood		6	47	243	6	1	23	48	137	55	13	8	38	52	4	51	60		6		83	243	114	7	17	1,262
Thorpe/Westwood		2	10	5			7	5	18	11		4	2	11	2	5	8		1		24	24	38	2	4	183
West Central	4	25	603	252	255	8	358	832	967	622	230	162	552	440	249	970	396	21	48	8	733	1,469	739	167	457	10,567
West Hills	1	13	59	47	21	3	39	81	173	143	16	12	49	34	31	83	41	4	6		127	232	186	21	39	1,461
Whitman		9	119	37	43	2	97	200	200	132	54	18	109	141	32	172	222	9	12		182	421	159	32	87	2,489
Grand Total	30	486	7,815	6,235	2,069	155	4,449	8,160	14,481	8,273	2,549	1,900	6,005	5,839	2,791	10,584	5,781	405	480	76	10,486	24,754	16,242	1,923	4,601	146,569

UCR's

2003 UCR Breakdown by Neighborhood																															
Spokane, WA																															
Count of FID_1	CRIMEDESC																														
NAME	Additional Info.	Assault, Aggravated	Assault, Firearm	Assault, Knife	Assault, Non-Aggrvtd	Assault, O/Dang. Wpn	Burg. Attm, Com, Dy	Burg. Attm, Com, Nt	Burg. Attm, Com, Unk	Burg. Attm, Res, Dy	Burg. Attm, Res, Nt	Burg. Attm, Res, Unk	Burg. Force, Com, Dy	Burg. Force, Com, Nt	Burg. Force, Com, Un	Burg. Force, Res, Dy	Burg. Force, Res, Nt	Burg. Force, Res, Un	Burg. Ulwfl, Com, Dy	Burg. Ulwfl, Com, Nt	Burg. Ulwfl, Com, Un	Burg. Ulwfl, Res, Dy	Burg. Ulwfl, Res, Nt	Burg. Ulwfl, Res, Un	Homicide, Non-Nglight	Larceny, Bicycles	Larceny, Fr/CoIn Op	Larceny, From Bldng	Larceny, From Motor	Larceny, Other	Larceny, Pocket Pick
Balboa\South Indian Trail		2		2	53	8	1	2		1	1	1	4	2	1	2	1	4		1	1	11	3	7		2	2	11	22	26	
Bemiss	9	4		6	158	19				1	6	3		1	6	13	11	26	1		1	14	15	30		32	2	26	126	42	
Brownes Addition	3	1			66	4			2	4	3	1		4		3	5	9	1		1	5	5	17	1	2	2	17	45	12	
Chief Garry Park	8	4	1	7	169	9		2		1	3	3	1	7	9	14	5	24		1	1	13	6	24		23	2	31	119	85	1
Cliff\Cannon	22	19	9	17	235	21		2		5	5	1		1	6	17	11	20	1	1	4	16	21	32	1	21	1	66	232	62	
Comstock			2	2	39	4		1		1		1		2	3	3	4	11	1			4	6	14	1	8		7	77	26	
East Central	25	18	10	26	345	25		3	4	5	6	6	4	15	35	21	16	50	3	4	7	18	23	47	1	57	4	74	285	157	1
Emerson\Garfield	6	11	6	13	260	19	1	5	8	2	7	8	3	19	18	27	29	57	1	2	6	22	32	51	2	59	3	81	283	131	
Five Mile\Prairie	1				2												1	1					1	2				7	2		
Hillyard	9	1	7	9	149	15			1	3	3	4		4	9	12	11	30	1		3	15	10	18		27	2	37	79	111	
Latah Valley	2	1	1		19	2		1		1			1			2	3	6				2	4	8			7	5	19		
Lincoln Heights	7	3	1	1	113	4		2		2	3	3	1	2	2	9	10	17			1	11	13	30		11	1	35	209	61	
Logan	10	4	4	6	170	26		2	1	2	4	1		10	7	13	15	26	2	3	4	16	26	38	1	62	1	63	214	105	
Manito\Cannon Hill		1			12						2	1			1	2	2	4			2	9	4	7		4		4	61	14	
Moran Prairie	1	1	1	1	29	3						1				2	2	6	1			3	11	24		1		4	52	18	
Nevada\Lidgerwood	28	23	18	21	478	44	1	5	8	9	11	11	3	13	17	45	21	83	6	7	6	26	39	86	1	86	2	109	585	156	1
North Hill	3	1	4	5	152	8		1	3	1	5	3	3	12	14	15	12	43	1		3	19	14	50		38		36	232	83	1
North Indian Trail	1		1		17	3		1			1	2					1	3				4	4	9		1		3	30	8	
Northwest	11	4	7	3	165	14			1	6	4	5	2	4	6	13	18	48	1	2		24	20	44		37	3	33	240	148	1
Peaceful Valley					6													1			1			1		2		2	2		
Riverside	12	12	9	13	242	21		3	1	1		1	1	14	21	1	2	6	4	11	12	6	6	17	2	43	7	104	326	73	6
Rockwood	2				18	1				1	1	1			4	3	1	2			1	1	9	15		6		11	66	10	
Thorpe\Westwood					1												1	1				1				1		1	2	2	
West Central	19	8	10	14	311	23		3	3	7	6	1		15	19	20	18	64	2	1	4	15	15	43	6	51	1	53	129	67	
West Hills	1	1			34	4			1					1	3		1	2		2	1	2	3	7		3	1	23	33	10	
Whitman	1	1	1	4	69	8				3	2	3	1		4	6	3	16			1	5	11	23		18		9	48	20	
(blank)	35	10	9	7	306	32		1		3	3	4	3	10	7	12	2	8	4	1	6	6	13	36		16	3	47	139	54	1
Grand Total	216	130	101	157	3618	317	3	34	33	59	76	65	27	136	192	255	206	568	30	36	66	268	314	680	16	611	37	894	3648	1502	12

UCR's

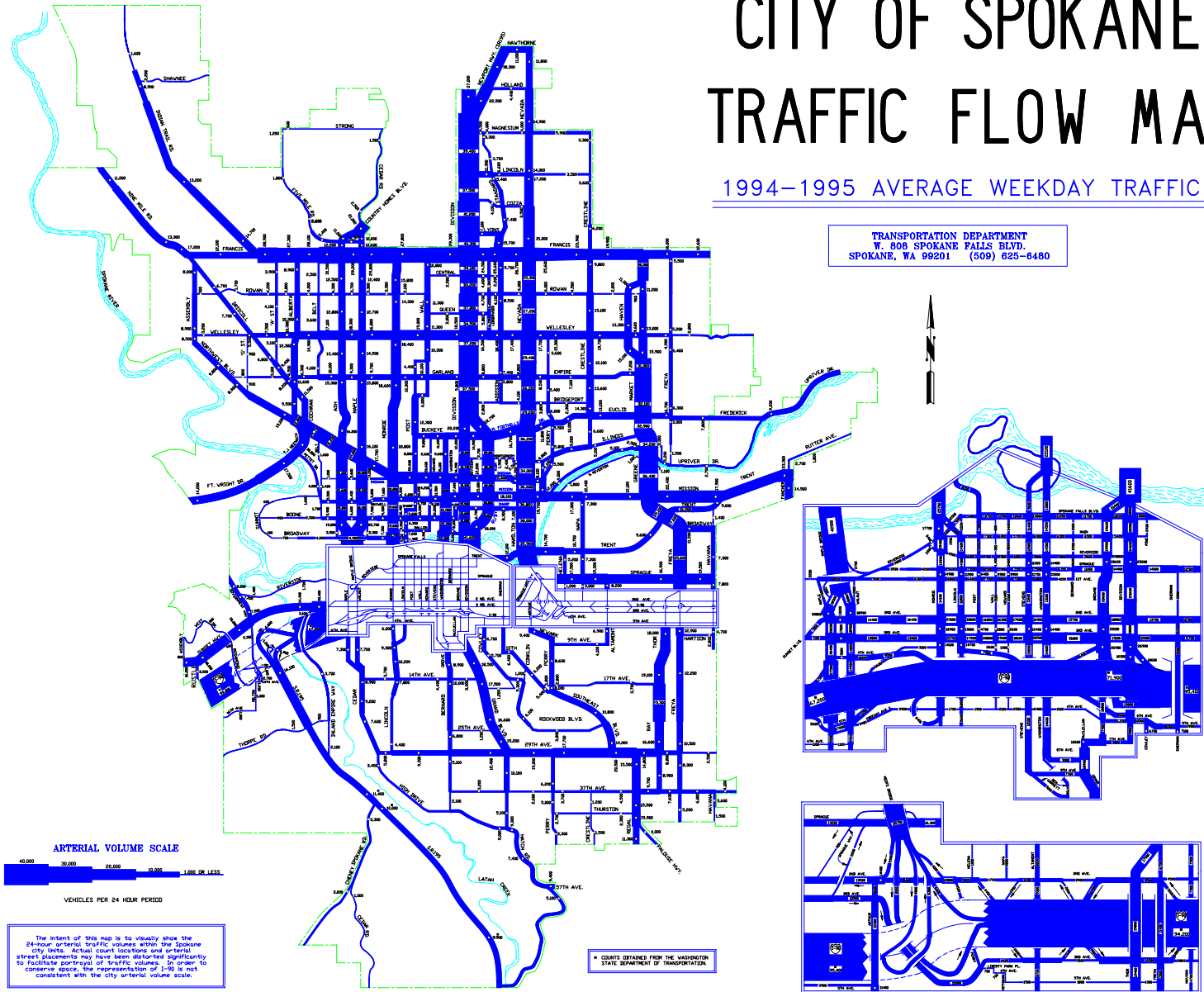
2003 UCR Br																																
Spokane, WA																																
Count of FID_1																																
NAME	Larceny, Prs Snatch	Larceny, Shoplifting	Larceny, Vehcl Parts	Rape, Att to commit	Rape, Forcible	Rob, Firearm, Bank	Rob, Firearm, Cmmrcl	Rob, Firearm, Conv.	Rob, Firearm, Gas St	Rob, Firearm, Highway	Rob, Firearm, Rsdnt	Rob, Knife, Cmmrcl	Rob, Knife, Conv.	Rob, Knife, Gas Stn	Rob, Knife, Highway	Rob, Knife, Rsdnt	Rob, O/Dang, Bank	Rob, O/Dang, Cmmrcl	Rob, O/Dang, Conv.	Rob, O/Dang, Highway	Rob, O/Dang, Rsdnt	Rob, Strong Arm, Bnk	Rob, Strong Arm, Cmr	Rob, Strong Arm, Cnv	Rob, Strong Arm, Gas	Rob, Strong Arm, Hwy	Rob, Strong Arm, Mis	Rob, Strong Arm, Rsd	Vehicle Theft, Autos	Vehicle Theft, Other	Vehicle Theft, Truck	Grand Total
Balboa\South Indian Trail		21	23		1					1																		4		2	223	
Bemiss	2	25	86		2																1		1			3	1	59	2	27	761	
Brownes Addition		23	46	2			1			1	1				1	1										4	1	1	12	2	1	310
Chief Garry Park	1	5	90	1	2					1										1						2	1	43	4	14	738	
Cliff\Cannon	1	21	183	1	21		2	1		3	1				4											12	4	68	1	10	1182	
Comstock		21	49				1																			1		14		1	304	
East Central	2	120	204		4			1		1	5								1		1		2			14	5	108	8	48	1819	
Emerson\Garfield	3	150	147	1	4		2	2		1					2	1	1	1				1			1	11		2	79	3	30	1614
Five Mile\Prairie			3																									4			24	
Hillyard		56	67				1			1					3	1				2						2	1	39	1	18	762	
Latah Valley		6	8																									3	1	1	103	
Lincoln Heights		30	121	2			2	1	2	1	1				2					1	1	1	1			3	1	40	5	14	781	
Logan		215	160	1	1		2			1	1			1	3							1				5		91	12	21	1351	
Manito\Cannon Hill		1	33		1																					1		12	1	5	184	
Moran Prairie		1	33																									7		3	205	
Nevada\Lidgerwood	2	416	447	1	12		8	1	2	4	4	3			1				1	2	1	2	1			21	2	3	208	8	62	3161
North Hill		41	144				3													1		1	2			5		47	4	16	1026	
North Indian Trail		1	15		1																							5		4	115	
Northwest	2	161	135		2	1	1			5														1			2	1	58	5	16	1254
Peaceful Valley			2																									2			19	
Riverside	5	151	117	1	2		1	1		4		1			3			1		2	1	1	3		1	18	2	2	57	2	15	1368
Rockwood	1	9	24					1																		1		8	1	3	201	
Thorpe\Westwood			2																									1			13	
West Central		32	96	1	8			1		2	5		1	1	1			1		1	1			3	1	9		5	60	3	20	1180
West Hills		1	31		2		1			2					1									1			1		15	2	4	194
Whitman	1	1	51		2																					8		33		6	359	
(blank)	1	54	72	2	5		1	1		3	3								1		2			1		16	1	5	87	3	22	1058
Grand Total	21	1562	2389	13	70	1	26	10	4	31	21	4	1	2	21	3	1	3	3	10	8	7	11	5	3	139	8	30	1164	68	363	20309



CITY OF SPOKANE TRAFFIC FLOW MAP

1994-1995 AVERAGE WEEKDAY TRAFFIC

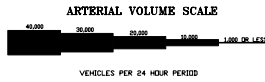
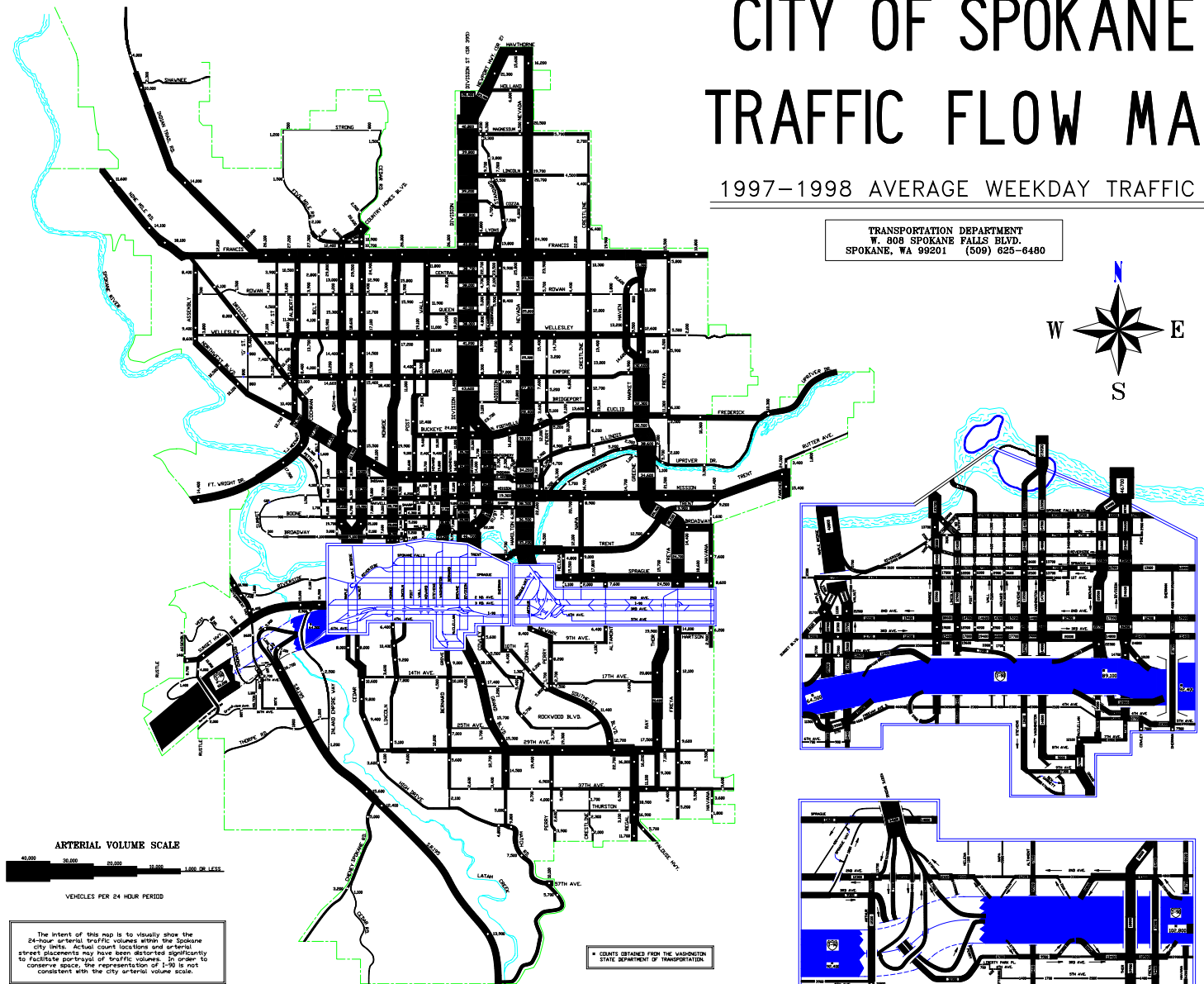
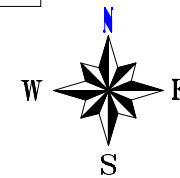
TRANSPORTATION DEPARTMENT
W. 808 SPOKANE FALLS BLVD.
SPOKANE, WA 99201 (509) 625-6480



CITY OF SPOKANE TRAFFIC FLOW MAP

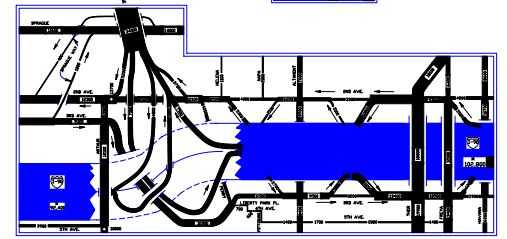
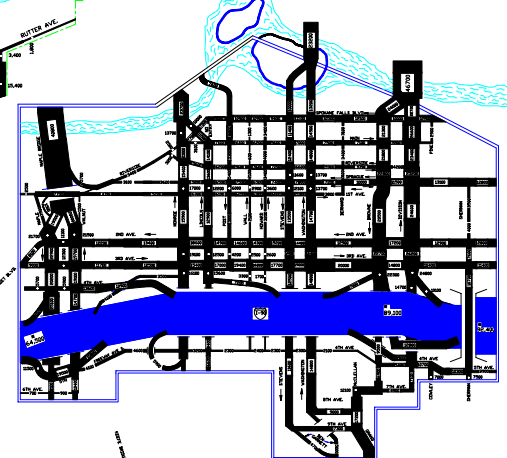
1997-1998 AVERAGE WEEKDAY TRAFFIC

TRANSPORTATION DEPARTMENT
W. 808 SPOKANE FALLS BLVD.
SPOKANE, WA 99201 (509) 625-6480



The intent of this map is to visually show the 24-hour, arterial traffic volumes within the Spokane city limits. Actual count locations and arterial street placements may have been distorted significantly to facilitate portrayal of traffic volumes. In order to conserve space, the representation of 1-90 is not consistent with the city arterial volume scale.

• COUNTS OBTAINED FROM THE WASHINGTON STATE DEPARTMENT OF TRANSPORTATION.

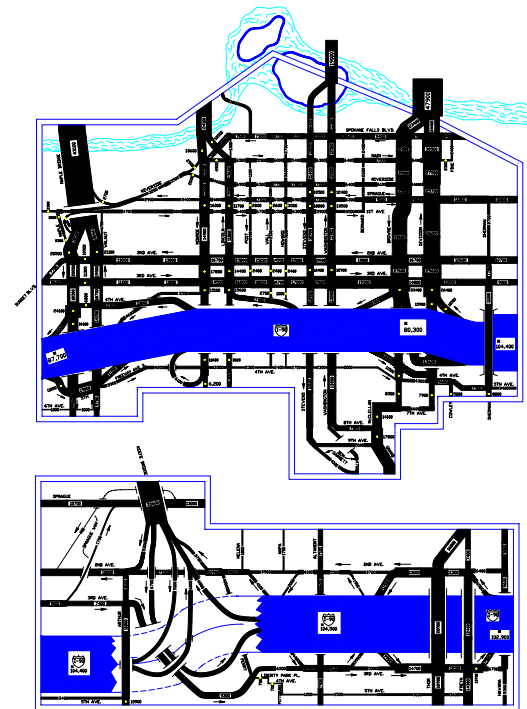
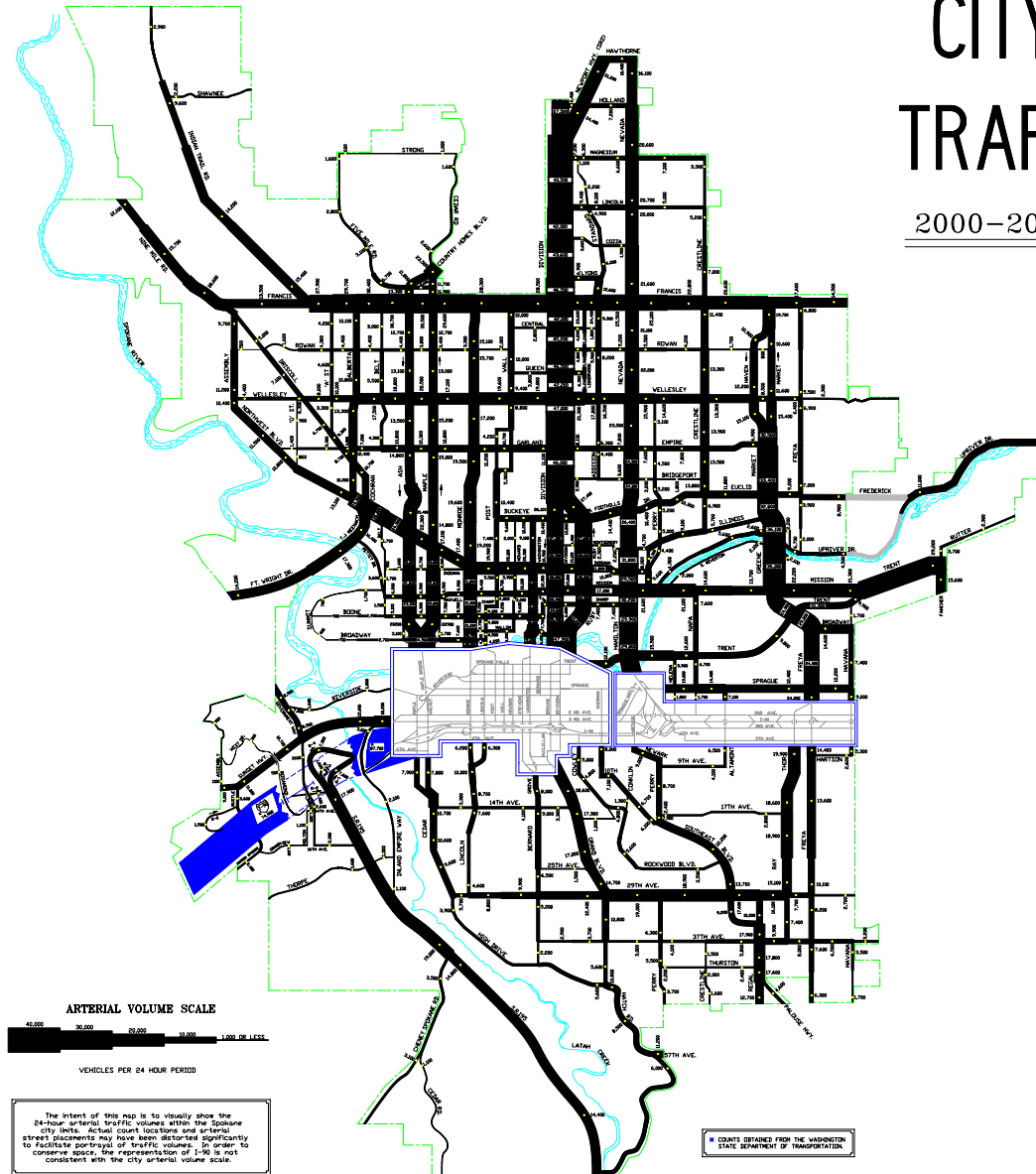
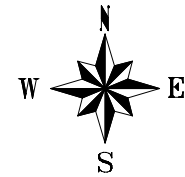


PUBLISHED JAN 1999

CITY OF SPOKANE TRAFFIC FLOW MAP

2000-2001 AVERAGE WEEKDAY TRAFFIC

TRAFFIC ENGINEERING
ENGINEERING SERVICES
W. 808 SPOKANE FALLS BLVD.
SPOKANE, WA 99201-3314
(509)625-6300

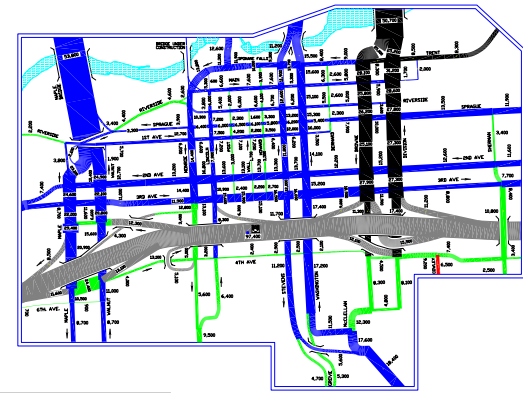
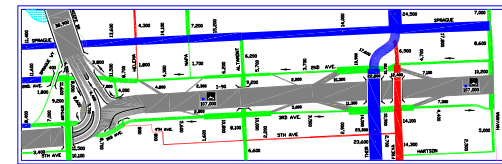
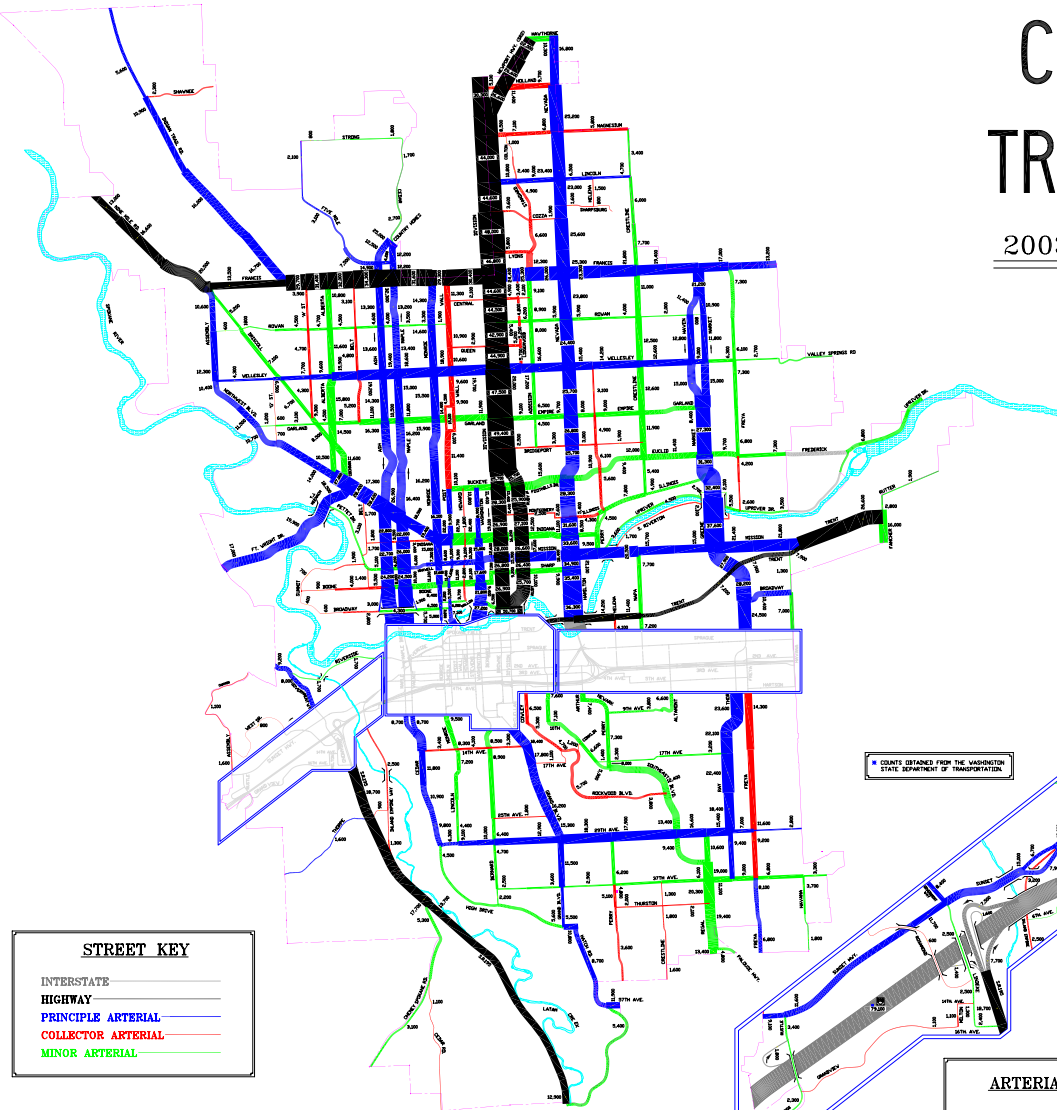
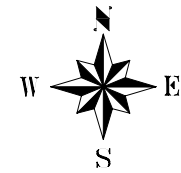


PUBLISHED DEC 2001

CITY OF SPOKANE TRAFFIC FLOW MAP

2003-2004 AVERAGE WEEKDAY TRAFFIC

STREET DEPARTMENT
TRAFFIC OPERATIONS
901 N. NELSON ST.
SPOKANE, WA 99202-3769
(509)232-6800

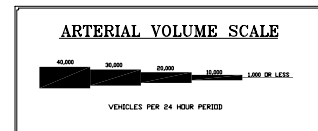


STREET KEY

INTERSTATE	—
HIGHWAY	—
PRINCIPLE ARTERIAL	—
COLLECTOR ARTERIAL	—
MINOR ARTERIAL	—

The intent of this map is to visually show the 24-hour arterial traffic volumes within the Spokane city limits. Actual count locations and arterial street placements may have been distorted significantly to facilitate portrayal of traffic volumes. In order to conserve space, the representation of 0-500 is not consistent with the city arterial volume scale.

© COUNTY OBTAINED FROM THE WASHINGTON STATE DEPARTMENT OF TRANSPORTATION



PUBLISHED 7/04

