

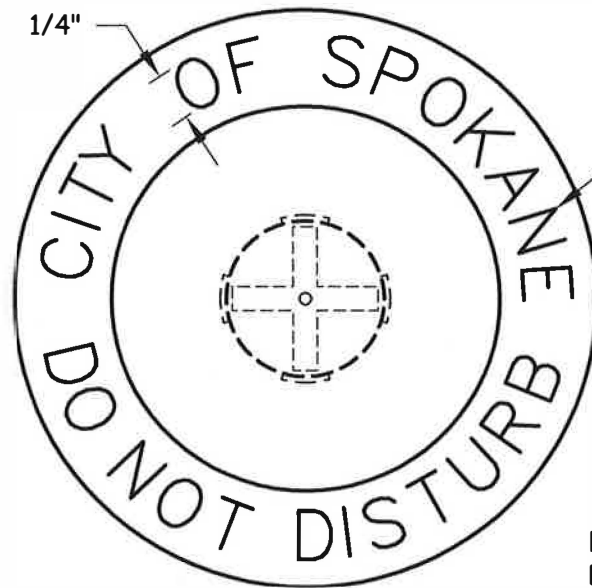
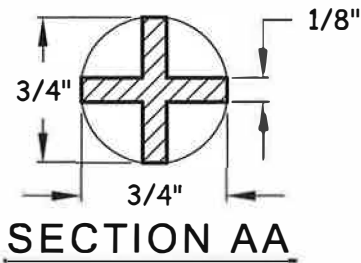
TABLE OF CONTENTS

CITY OF SPOKANE STANDARD PLANS – SECTION H

B-101B = Revised Standard Plan
***W-108A = New Standard Plan
#A-1 = Renumbered Standard Plan

[Back to Main TOC](#)

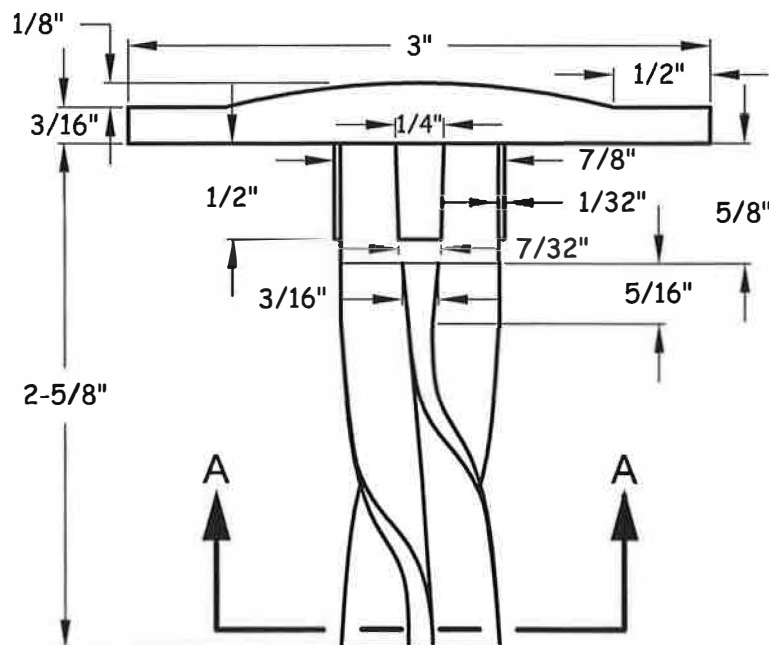
<u>Plan No.</u>	<u>Plan Title</u>	<u>Current Plan Date</u>
H-101	Monument Frame and Cover	5/07
H-102	<i>See Std. Plan J-112E</i>	
H-103	Standard Bench Mark	5/07
H-104	Monument Frame Riser Ring	5/07
H-105	Monument Installation	9/19



LETTERS MADE W/ $\frac{1}{8}$ "
GROOVE, $\frac{1}{32}$ " DEEP
(SEE DETAIL)

NOTE: CAST BRASS
DISC FROM YELLOW
BRASS SAE 41.

PLAN VIEW



ELEVATION VIEW

APPROVED BY

Tom L. Arnold
DIRECTOR, ENGINEERING SERVICES TOM L. ARNOLD, P.E.
Gary S. Nelson
PRINCIPAL ENGINEER, DESIGN GARY S. NELSON, P.E.

ADOPTED: 02/1986
REVISED: 05/2007
SUPERSEDES: H-102, 02/86
CHECKED BY: JAG
SCALE: NTS
DWG/REV. BY: SRM

STANDARD BENCH MARK



ENGINEERING SERVICES
CITY OF SPOKANE, WASHINGTON

STANDARD
PLAN No.
H-103

Per section 9-22.1, the casting shall be Gray-Iron casting, AASHTO M 105, class 30B. The seat of the riser shall be machined so as to have perfect contact around the entire circumference and full width of bearing surface.



 DIRECTOR, ENGINEERING SERVICES TOM L. ARNOLD, P.E.



 PRINCIPAL ENGINEER, DESIGN GARY S. NELSON, P.E.

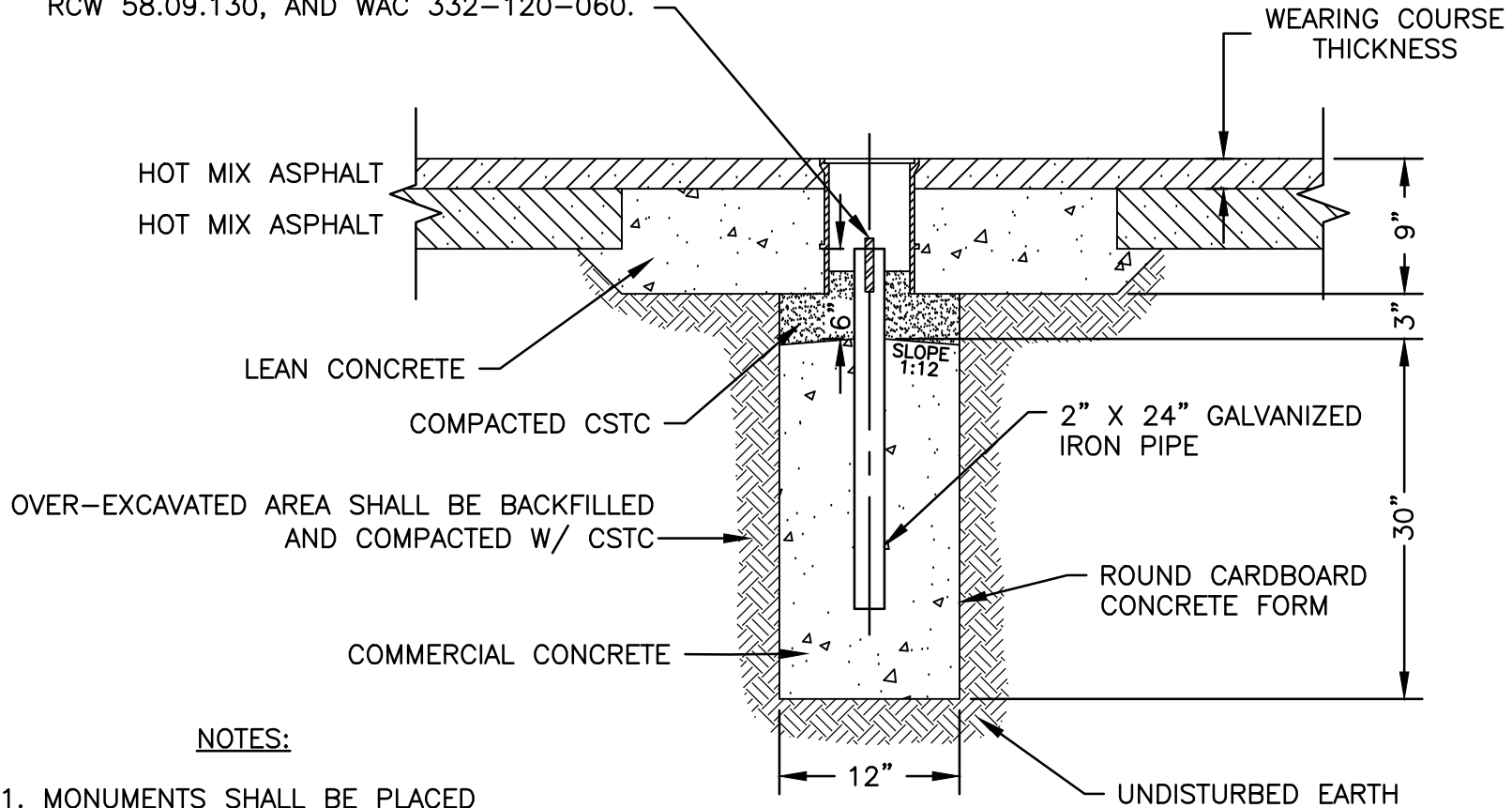
ADOPTED: 02/1986
REVISED: 05/2007
SUPERSEDES: H-101A, 02/86
CHECKED BY: JAG
SCALE: NTS
DWG/REV. BY: SRM



ENGINEERING SERVICES
CITY OF SPOKANE, WASHINGTON


STANDARD
PLAN No.
H-104

FILL GALVANIZED IRON PIPE W/QUICK SET CONCRETE.
INSERT ANY SUITABLE MONUMENT PER RCW 58.09.120,
RCW 58.09.130, AND WAC 332-120-060.



NOTES:

1. MONUMENTS SHALL BE PLACED BY A PROFESSIONAL LAND SURVEYOR LICENSED IN THE STATE OF WASHINGTON.
2. MONUMENTS SHALL PLACED PRIOR TO HMA WEARING COURSE.

<p>APPROVED BY</p>  <p>ENGINEERING SERVICES DIRECTOR KYLE TWOHIG</p> <p>CITY ENGINEER DAN BULLER, P.E.</p>	<p>ADOPTED: _____</p> <p>REVISED: 09/2019</p> <p>SUPERSEDES: 04/2012</p> <p>CHECKED BY: SJS</p> <p>SCALE: NTS</p> <p>DWG/REV. BY: LWK/MLD</p>	<p>MONUMENT INSTALLATION</p> <p>ENGINEERING SERVICES CITY OF SPOKANE, WASHINGTON</p> <p>STANDARD PLAN No. H-105</p>
-----------------------------------------------------------------------------------------------------------------------------------------------------------------------------------------------	-----------------------------------------------------------------------------------------------------------------------------------------------	-----------------------------------------------------------------------------------------------------------------------------------------------