

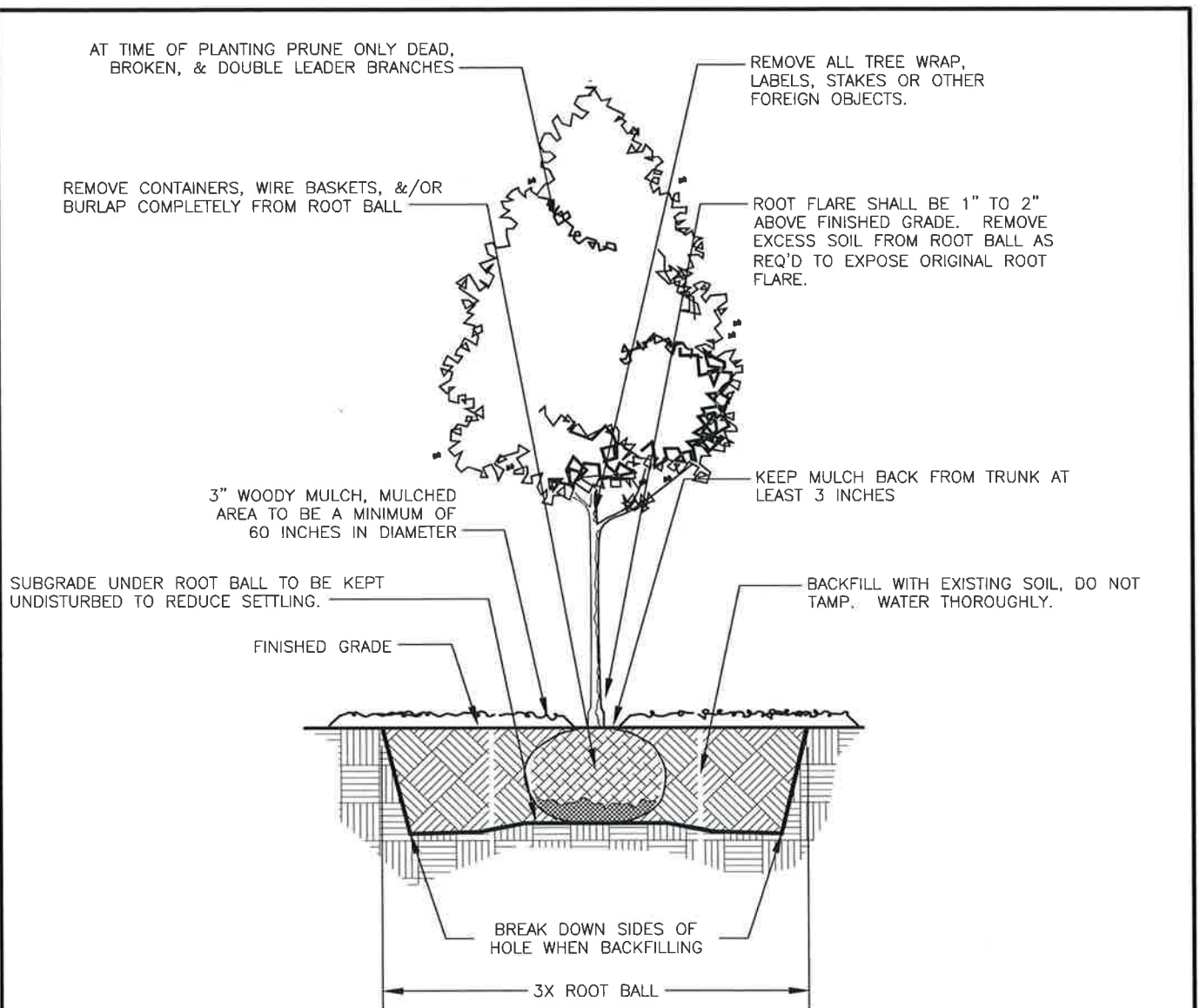
TABLE OF CONTENTS

CITY OF SPOKANE STANDARD PLANS – SECTION V

B-101B = Revised Standard Plan
***W-108A = New Standard Plan
#A-1 = Renumbered Standard Plan

[Back to Main TOC](#)

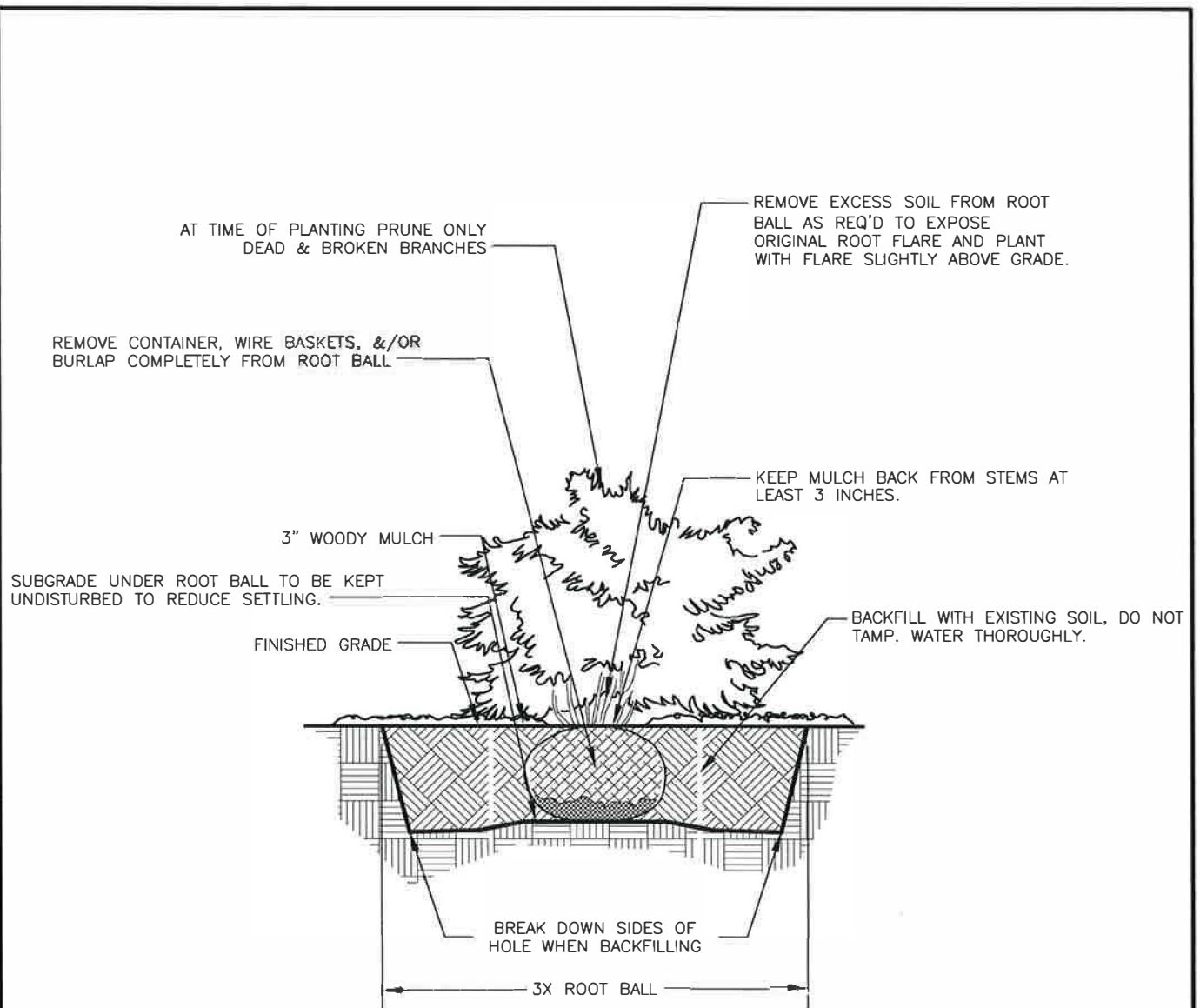
<u>Plan No.</u>	<u>Plan Title</u>	<u>Current Plan Date</u>
V-101	Tree Planting Details All Types, Forms, and Species	5/15
V-102	Shrub Planting Details All Types, Forms, and Species	5/15
V-103	Irrigation System Details	2/86
V-104	2" and Smaller Meter/Backflow Assembly for Irrigation Systems	8/19



NOTES:

1. TREES BURIED TOO DEEP, OR WITHOUT EXPOSING ROOT FLARE WILL BE REJECTED & SHALL BE REMOVED & REPLANTED AT PROPER DEPTH.
2. ALL 'ADVENTITIOUS ROOTS' AND 'SUCKERS' SHALL BE PRUNED AWAY PRIOR TO PLANTING.
3. DEVIATIONS FROM THIS DETAIL SHALL ONLY BE ALLOWED WITH PERMISSION FROM THE CITY ARBORIST.
4. TREES NOT PLANTED IN CONFORMITY WITH THIS DETAIL WILL BE REJECTED BY THE CITY ARBORIST. REPLACEMENT OF REJECTED TREES WILL BE DONE AT THE CONTRACTOR'S EXPENSE & NOT BY THE CITY OF SPOKANE.
5. LOCATIONS OF TREES TO MEET THE REQUIREMENTS OF DESIGN STANDARDS 3.5-2.
 ≥ 15 FT FROM DRIVEWAYS, ≥ 10 FT FROM DRAINAGE INLETS, ≥ 20 FT FROM DRYWELLS,
 NOT OBSTRUCT TRAFFIC SIGNS OR SIGHT TRIANGLES, AND 15 FT FROM UNDERGROUND UTILITIES
6. AFTER PLANTING, IF TREES ARE UNSTABLE, STAKING MAY BE USED BUT ONLY AS NECESSARY.
 AT 6 MONTHS, ALL STAKING MATERIAL SHALL BE REMOVED. IF TREE IS STILL UNSTABLE,
 AFTER 6 MONTHS, TREE MAY NEED TO BE REPLACED.

<p style="text-align: center;">APPROVED BY</p> <div style="text-align: center;"> <p>ENGINEERING OPERATIONS MANAGER KYLE TWOHIG</p> </div> <div style="text-align: center; margin-top: 20px;"> <p>PRINCIPAL ENGINEER, CONST. KENNETH M. BROWN, P.E.</p> </div>	<p>ADOPTED: 2/1986 REVISED: 05/2015 SUPERSEDES: 04/2012 CHECKED BY: SJS SCALE: NTS REVISED BY: MLD</p>	<p>TREE PLANTING DETAILS ALL TYPES, FORMS AND SPECIES</p> <div style="display: flex; justify-content: space-between; align-items: center;"> <div style="text-align: center;"> <p>ENGINEERING SERVICES CITY OF SPOKANE, WASHINGTON</p> </div> <div style="text-align: center;"> <p>STANDARD PLAN No. V-101</p> </div> </div>
--	---	--



NOTES:

1. SHRUBS BURIED TOO DEEP, OR WITHOUT EXPOSING ROOT FLARE WILL BE REJECTED & SHALL BE REMOVED & REPLANTED AT PROPER DEPTH.
2. DEVIATIONS FROM THIS DETAIL SHALL ONLY BE ALLOWED WITH PERMISSION FROM THE CITY ARBORIST.
3. SHRUBS NOT PLANTED IN CONFORMITY WITH THIS DETAIL WILL BE REJECTED BY THE CITY ARBORIST. REPLACEMENT OF REJECTED SHRUBS WILL BE DONE AT THE CONTRACTOR'S EXPENSE & NOT BY THE CITY OF SPOKANE.

APPROVED BY

ENGINEERING OPERATIONS MANAGER

KYLE TWOHIG

PRINCIPAL ENGINEER, CONST.

KENNETH M. BROWN, P.E.

ADOPTED: 2/1986

REVISED: 05/2015

SUPERSEDES: 04/2012

CHECKED BY: SJS

SCALE: NTS

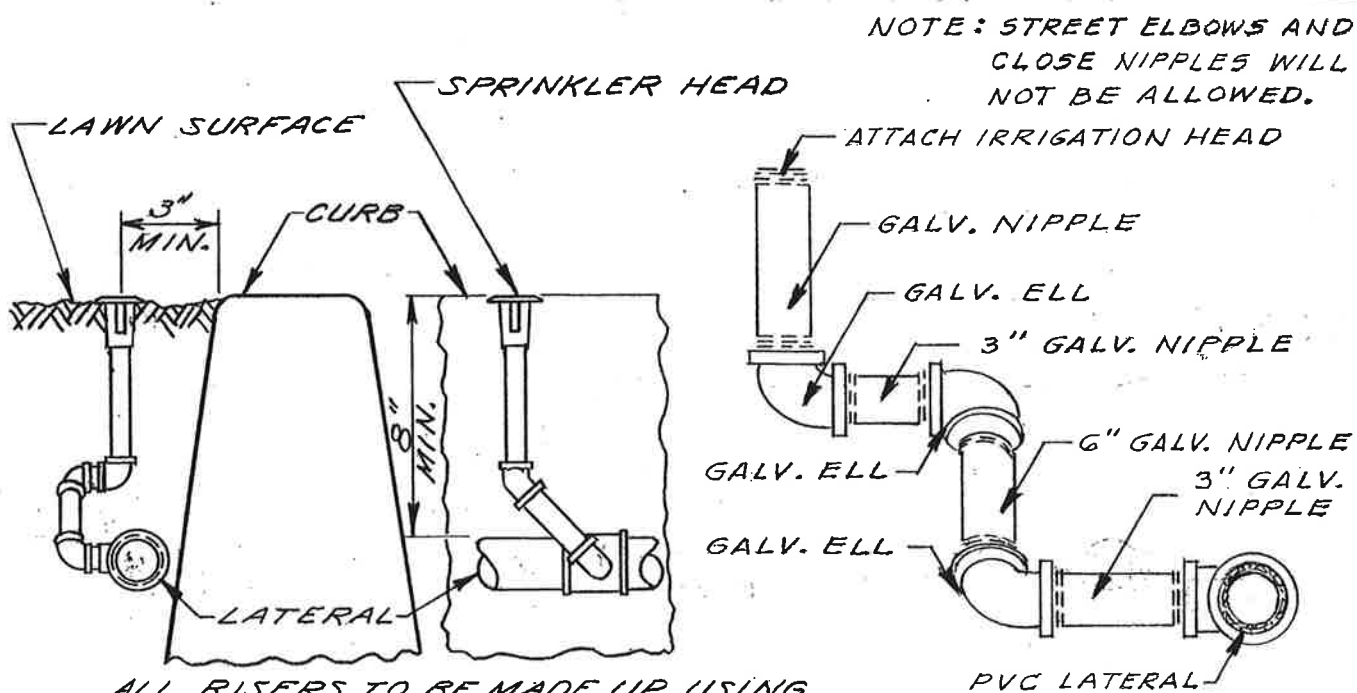
REVISED BY: MLD

SHRUB PLANTING DETAILS
ALL TYPES, FORMS AND SPECIES



ENGINEERING SERVICES
CITY OF SPOKANE, WASHINGTON

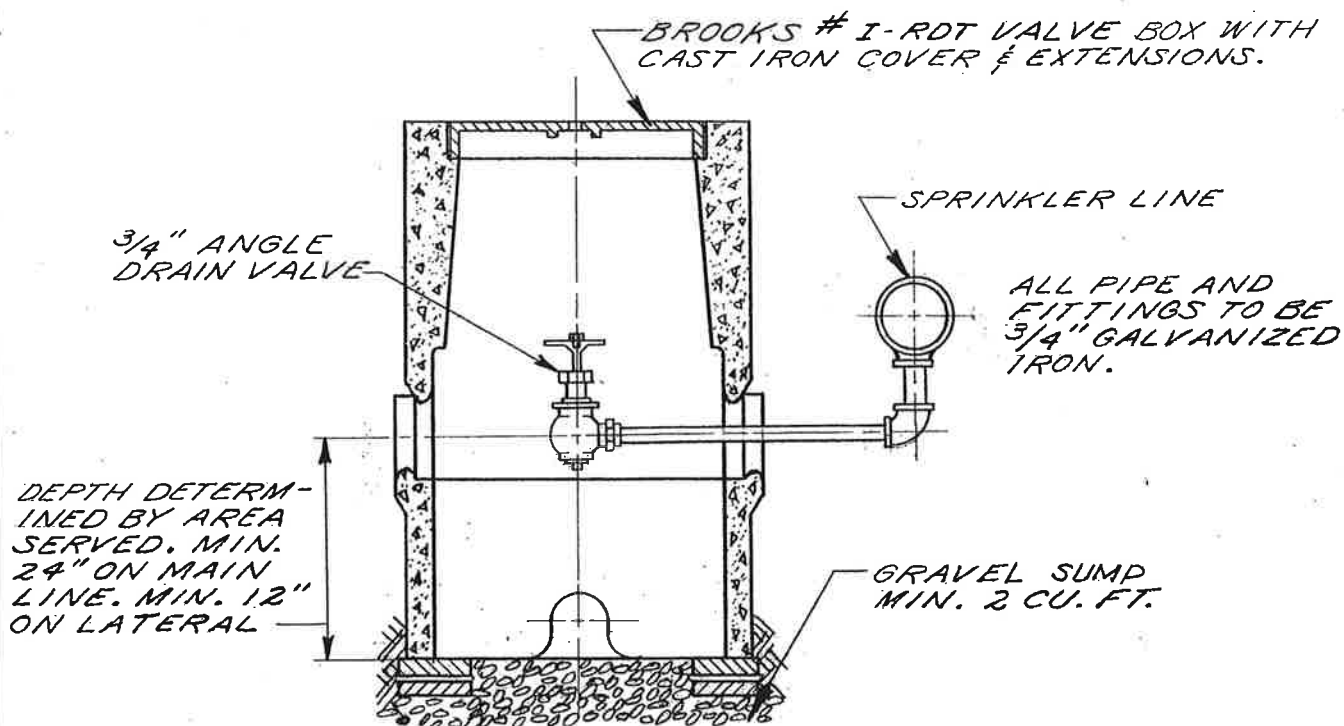
STANDARD
PLAN No.
V-102



ALL RISERS TO BE MADE UP USING
1/2" GALVANIZED PIPE AND FITTINGS

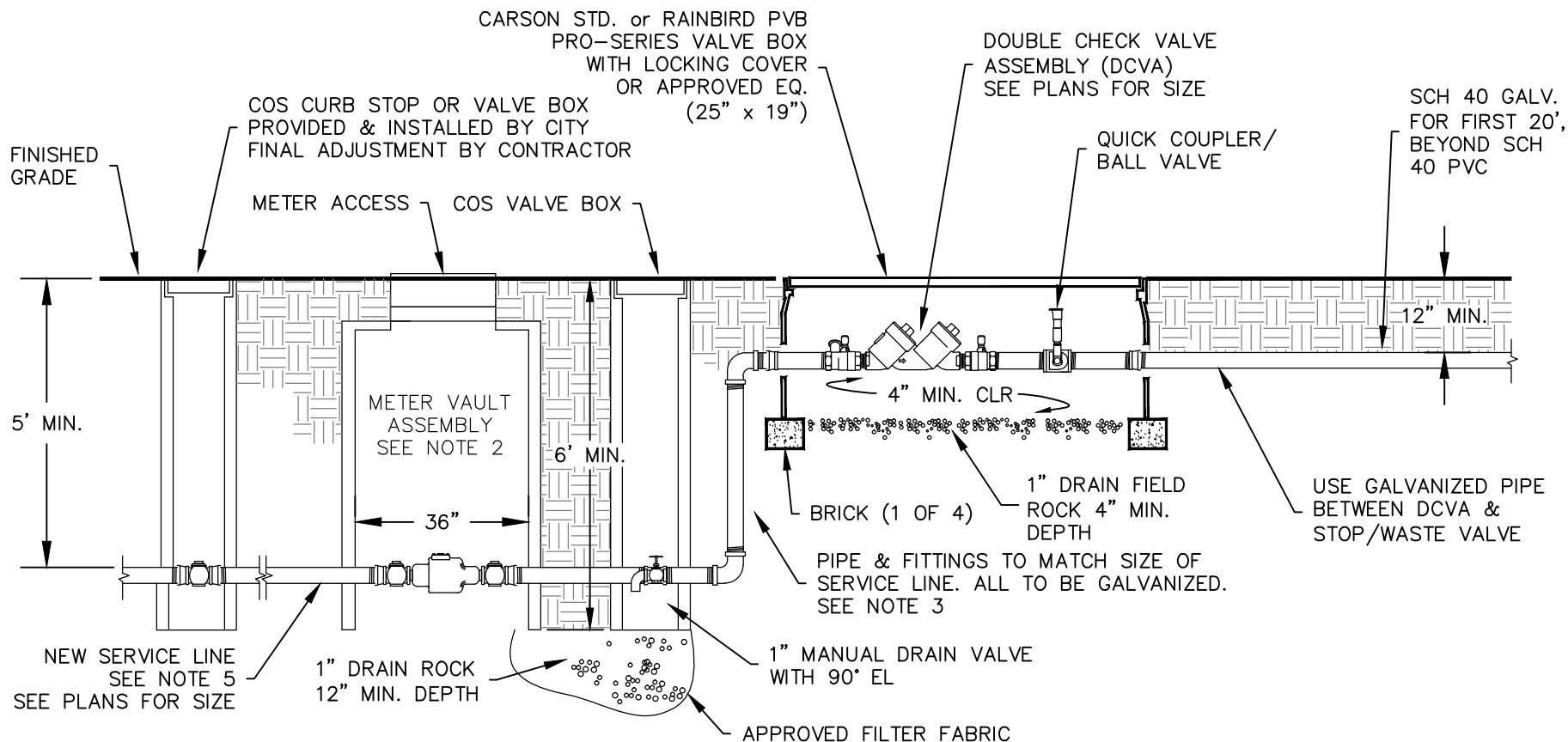
POP-UP SPRINKLER DETAIL

TRIPLE SWING JOINTS



DRAIN VALVE DETAIL

<p>APPROVED BY</p> <p>CITY ENGR. <i>Bert A. Ben</i></p> <p>CH. DES. ENGR. <i>Samuel</i></p>	<p>SCALE <u>NONE</u></p> <p>ADOPTED <u>2-86</u></p> <p>REVISED <u>-----</u></p>	<p>IRRIGATION SYSTEM DETAILS</p> <p>DEPT. OF PUBLIC WORKS</p> <p>ENGR. DIVISION SPOKANE, WN.</p> <p>STANDARD PLAN No. V-103</p>	
---	---	---	--



NOTES:

1. CONTRACTOR IS TO PROVIDE ALL EXCAVATION AND BACKFILL FOR CITY FORCES TO SUPPLY AND INSTALL, UPON PAYMENT OF FEES, THE TAPPING SADDLE, CORP STOP, SERVICE LINE, CURB STOP, METER VAULT, METER & ISOLATION VALVES INSIDE METER VAULT. TRENCH EXCAVATION AND BACKFILL PAID UNDER BID ITEM TRENCH EXCAVATION FOR WATER SERVICE TAP.
2. CONTRACTOR IS FULLY RESPONSIBLE FOR FURNISHING AND INSTALLING ALL PIPE & FITTINGS DOWNSTREAM OF THE METER VAULT.
3. ALL PIPE & FITTINGS DOWNSTREAM OF THE METER TO THE MAINLINE TO BE GALVANIZED SCH. 40.
4. CITY TO SUPPLY AND INSTALL PRV INSIDE OF METER VAULT WHERE PRESSURES EXCEED 80 PSI.
5. SEE IRRIGATION DESIGN GUIDELINES FOR ADDITIONAL INSTALLATION INFORMATION.

<p style="text-align: center;">APPROVED BY</p> <div style="text-align: center;"> <small>ENGINEERING SERVICES DIRECTOR</small> <small>KYLE TWOHIG</small> </div> <div style="text-align: center; margin-top: 10px;"> <small>CITY ENGINEER</small> <small>DAN BULLER, P.E.</small> </div>	<p>ADOPTED: _____</p> <p>REVISED: <u>08/2019</u></p> <p>SUPERSEDES: <u>01/2017</u></p> <p>CHECKED BY: <u>DAB</u></p> <p>SCALE: <u>NTS</u></p> <p>DWG/REV. BY: <u>RJS/MLD</u></p>	<p style="text-align: center;">2" AND SMALLER METER/BACKFLOW ASSEMBLY FOR IRRIGATION SYSTEMS</p> <div style="display: flex; justify-content: space-between; align-items: center;"> <div style="text-align: center;"> ENGINEERING SERVICES <small>CITY OF SPOKANE, WASHINGTON</small> </div> <div style="text-align: center;"> <small>STANDARD PLAN No. V-104</small> </div> </div>
---	--	--