

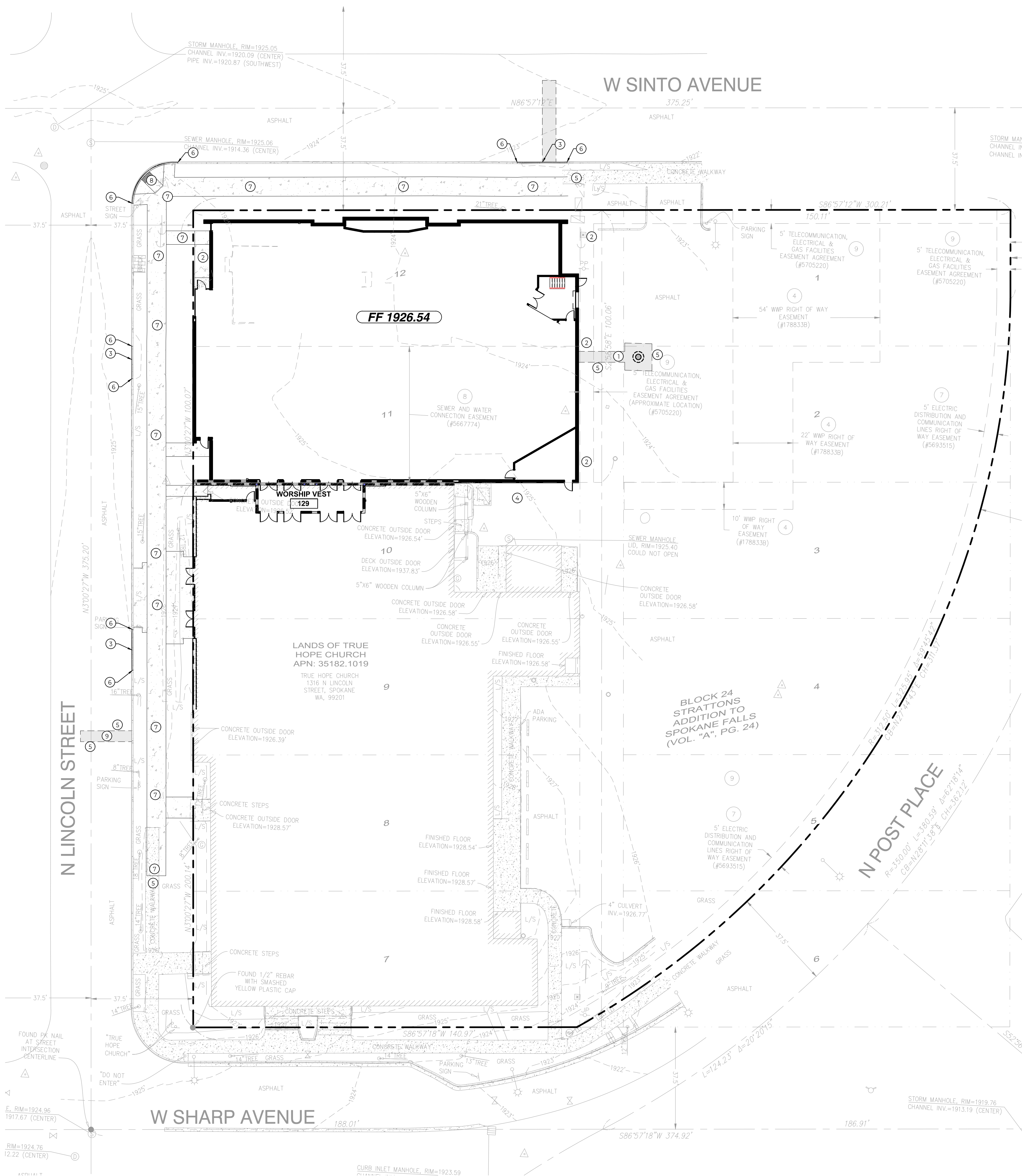
E

D

C

B

A



GRADING KEY NOTES

- 1 NEW ASPHALT PAVEMENT. SEE DETAIL 1 ON SHEET C-800.
- 2 NEW ON-SITE CONCRETE SIDEWALK. SEE DETAIL 6 ON SHEET C-800.
- 3 NEW 6" CONCRETE CURB PER CITY OF SPOKANE STANDARD PLAN F-106. SEE DETAIL 1 ON SHEET C-801.
- 4 NEW TRASH ENCLOSURE. CONTRACTOR SHALL REFERENCE ARCHITECTURAL PLANS FOR ADDITIONAL INFORMATION. SEE DETAIL 5 ON SHEET C-800.
- 5 CONTRACTOR SHALL MATCH EXISTING ELEVATION ALONG SAWCUT LINE, TYPICAL.
- 6 CONTRACTOR SHALL TIE PROPOSED TOP OF CURB INTO EXISTING TOP OF CURB ELEVATION.
- 7 NEW OFF-SITE CONCRETE SIDEWALK PER CITY OF SPOKANE STANDARD PLAN F-102. SEE DETAIL 9 ON SHEET C-800.
- 8 NEW TYPE 1 CONCRETE CURB RAMP PER CITY OF SPOKANE STANDARD PLAN F-105. SEE DETAIL 10 ON SHEET C-800.
- 9 NEW ASPHALT PAVEMENT FOR ROAD. CONTRACTOR SHALL MATCH EXISTING ROAD PAVEMENT SECTION.

GENERAL GRADING NOTES

1. ALL CLEARING, GRUBBING, SITE PREPARATION, OVER-EXCAVATION, EARTHWORK, ENGINEERED FILL, AND MATERIAL TESTING SHALL BE IN COMPLIANCE WITH THE GEOTECHNICAL ENGINEERING REPORT.
2. CONTRACTOR SHALL ADJUST ALL EXISTING UTILITY SURFACE STRUCTURES (LIDS, CLEANOUTS, VALVE BOXES/COVERS, GRATES, ETC.) TO MATCH PROPOSED FINISHED GRADES.
3. ALL STREET DEMOLITION AND PATCHING WITHIN THE ROW SHALL BE DONE IN CONFORMANCE WITH THE INLAND NORTHWEST PAVEMENT CUT POLICY (LATEST EDITION).
4. ALL SIGNAGE, STRIPPING, AND TRAFFIC SIGNS LOCATED WITHIN THE ROW SHALL BE COMPLETED/INSTALLED PER CITY OF SPOKANE STANDARD PLANS AND SPECIFICATIONS.
5. SEE STORMWATER SHEET C-600 FOR ADDITIONAL STORMWATER INFORMATION.
6. SEE UTILITY PLAN SHEET C-700 FOR ADDITIONAL UTILITY INFORMATION.
7. ALL WORK WITHIN THE PUBLIC RIGHT-OF-WAY WILL REQUIRE A CITY OF SPOKANE OBSTRUCTION PERMIT. THE OBSTRUCTION PERMIT MAY REQUIRE A TRAFFIC CONTROL PLAN.

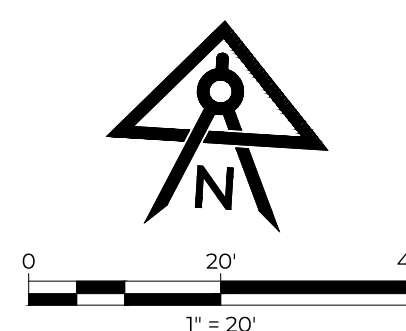
TRUE HOPE
CHURCH
EXPANSIONTRUE HOPE
CHURCHDESIGN
DEVELOPMENT

REV	DATE	DESCRIPTION

PROJ. NO.	2025-016
DRAWN	EMF
PROJ MNGR	EMF
DATE	06/13/2025

© ALSC ARCHITECTS, P.S.

SITE PLAN



C-500



Know what's below. Call 811 before you dig.

NOTE: UTILITIES SHOWN WERE PLOTTED FROM OBSERVED EVIDENCE AND PLANS OBTAINED FROM UTILITY PROVIDERS. EXACT LOCATIONS AND QUANTITIES MAY VARY. THE CONTRACTOR SHALL CALL 811 FOR UTILITY LOCATING SERVICES PRIOR TO EXCAVATION AND USE EXTREME CAUTION WHEN EXPOSING UTILITIES. ANY DAMAGE TO EXISTING UTILITIES WILL BE THE SOLE RESPONSIBILITY OF THE CONTRACTOR.