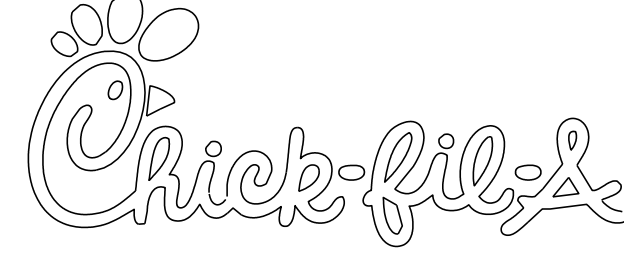
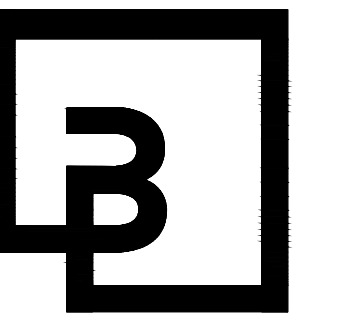


PRELIMINARY SITE PLAN
FOR
CHICK-FIL-A SPOKANE

SEC. 17, TWP 25 N., R 43 E, W.M.
CITY OF SPOKANE, SPOKANE COUNTY, WASHINGTON STATE



Chick-fil-A
5200 Buffington Road
Atlanta, Georgia 30349-2998



Barghausen Consulting Engineers, Inc.
18215 72nd Avenue South
Kent, WA 98032
425.251.6222
barghausen.com

CHICK-FIL-A
SPOKANE, WA
EAST SINTO AVENUE
SPOKANE, WA 99202

FSR# 05536

BUILDING TYPE / SIZE: P14SE LRG / 5,028 SF
RELEASE: PCR

REVISION SCHEDULE

NO.	DATE	DESCRIPTION

CONSULTANT PROJECT # 22784
PRINTED FOR
DATE 10/8/2024
DRAWN BY CMH

Information contained on this drawing and in all digital files produced for above named project may not be reproduced in any manner without express written or verbal consent from authorized project representatives.
SHEET

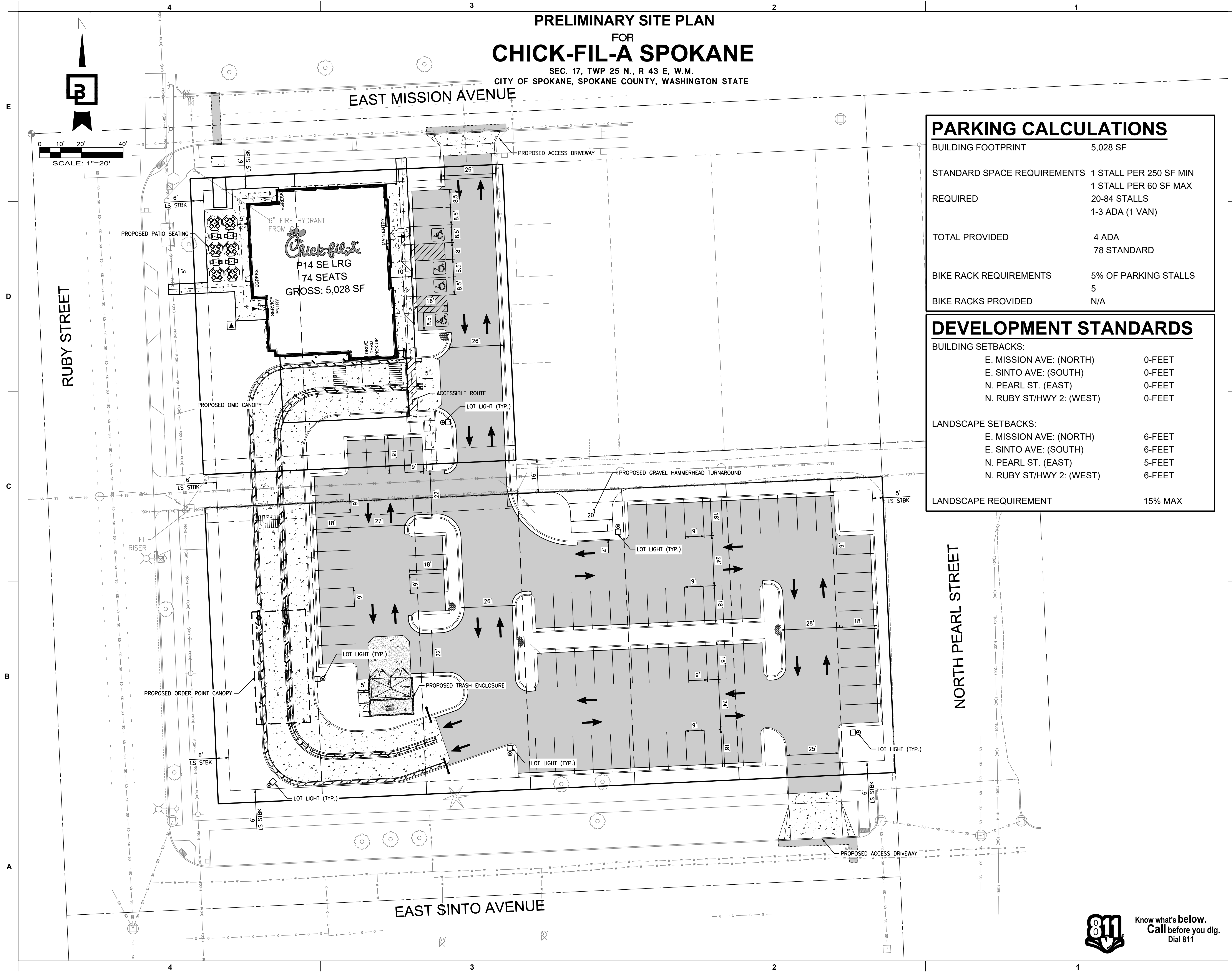
PRELIMINARY SITE PLAN

SHEET NUMBER

01 OF 04

PARKING CALCULATIONS	
BUILDING FOOTPRINT	5,028 SF
STANDARD SPACE REQUIREMENTS	1 STALL PER 250 SF MIN 1 STALL PER 60 SF MAX
REQUIRED	20-84 STALLS 1-3 ADA (1 VAN)
TOTAL PROVIDED	4 ADA 78 STANDARD
BIKE RACK REQUIREMENTS	5% OF PARKING STALLS
BIKE RACKS PROVIDED	5 N/A

DEVELOPMENT STANDARDS	
BUILDING SETBACKS:	
E. MISSION AVE: (NORTH)	0-FEET
E. SINTO AVE: (SOUTH)	0-FEET
N. PEARL ST. (EAST)	0-FEET
N. RUBY ST/HWY 2: (WEST)	0-FEET
LANDSCAPE SETBACKS:	
E. MISSION AVE: (NORTH)	6-FEET
E. SINTO AVE: (SOUTH)	6-FEET
N. PEARL ST. (EAST)	5-FEET
N. RUBY ST/HWY 2: (WEST)	6-FEET
LANDSCAPE REQUIREMENT	15% MAX



Know what's below.
Call before you dig.
Dial 811