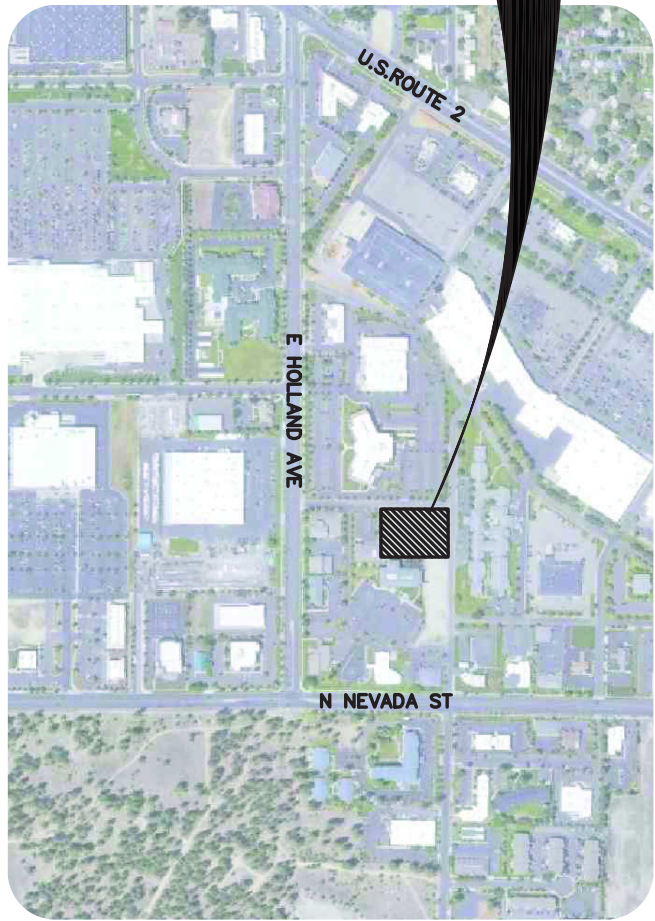


NEW CONSTRUCTION

MT SPOKANE PEDIATRICS

A PORTION OF THE SOUTHEAST 1/4 OF SECTION 17,
TOWNSHIP 26 NORTH, RANGE 43 EAST, W.M.
SPOKANE COUNTY, WASHINGTON



VICINITY MAP

PROJECT
AREA

SHEET INDEX

- C1.0 - COVER AND INDEX SHEET
C2.0 - ESC PLAN
C3.0 - SITE PLAN
C4.0 - GRADING AND DRAINAGE PLAN
C5.0 - UTILITIES PLAN
C6.0 - GENERAL DETAILS
C6.1 - STANDARD DETAILS
C6.2 - STANDARD DETAILS

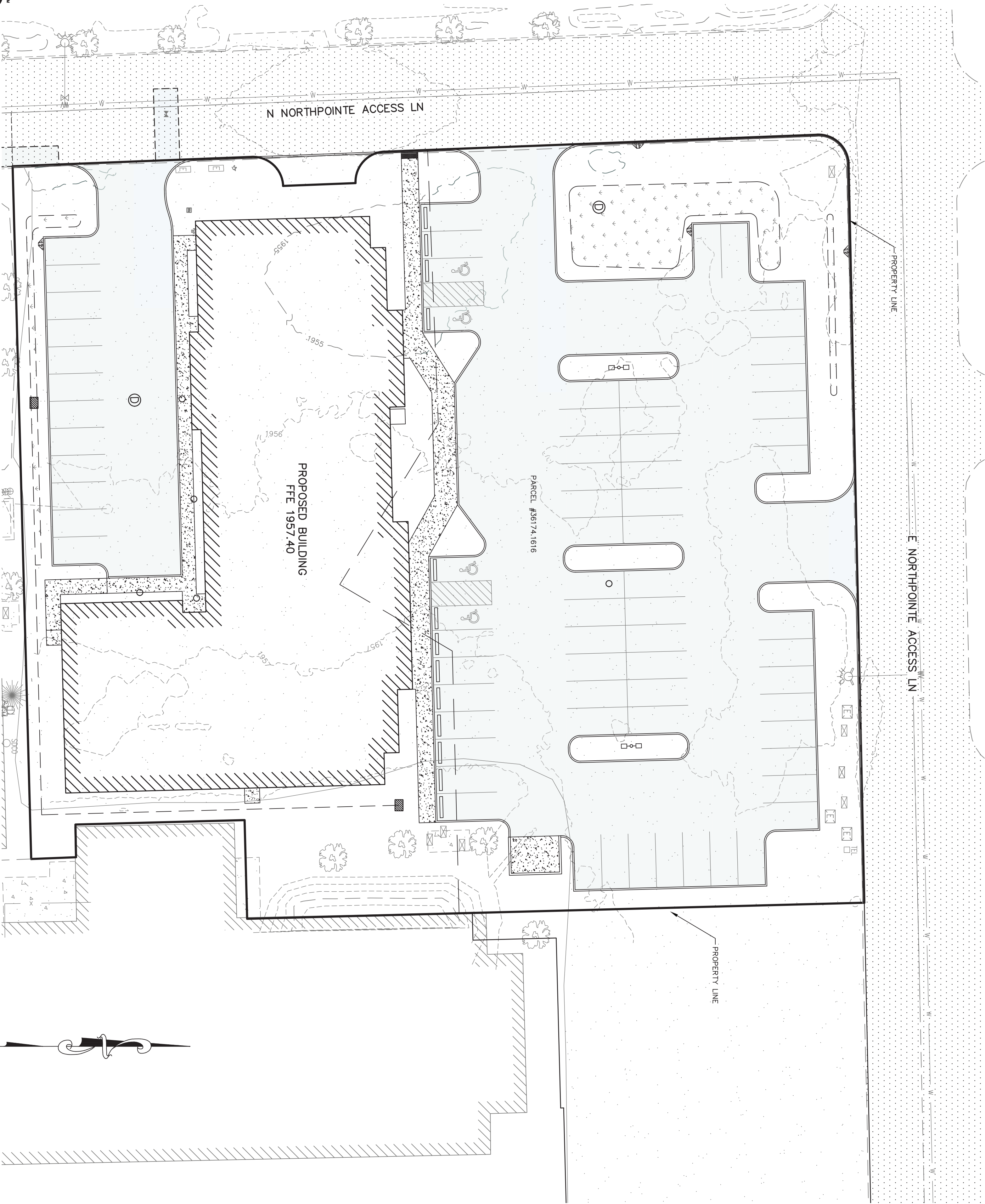
LEGEND

EXISTING FEATURES

- ASPHALT SURFACING
CURB
SIDEWALK OR CONCRETE
FOUND POINT AS NOTED
DRAINAGE
STORM MANHOLE
CATCH BASIN
GUY WIRE POLE
POWER POLE/TELEPHONE POLE
LIGHT POLE
TELEPHONE ENCLOSURE
WATER VALVE
FIRE HYDRANT
SANITARY SEWER MANHOLE
TREE (DECIDUOUS OR CONIFEROUS)
W
SS
SD
OHP
BT
G
2434
X
X
BFO
WATER LINE
SANITARY SEWER LINE
STORM DRAIN LINE / CULVERT
POWER LINE (OHP OR BP)
TELEPHONE LINE (OHT OR BT)
GAS LINE
CONTOURS
FENCE
FIBER OPTIC LINE

PROPOSED IMPROVEMENTS

- ASPHALT SURFACING
CURB
CONCRETE OR SIDEWALK
DRAINAGE
STORM MANHOLE
CONCRETE INLET
CURB INLET
POWER POLE
SIGN
WATER VALVE
WATER METER
FIRE HYDRANT
WATER SHUTOFF / WATER VAULT
SANITARY SEWER MANHOLE
CLEANOUT (CO)
GAS METER
WATER LINE (AS SIZED)
SLEEVE FOR WATER / SEWER CROSSING
SANITARY SEWER LINE
STORM DRAIN LINE / CULVERT
CONTOURS
STORM WATER SWALE / POND
DIRECTION OF SURFACE STORM WATER DRAINAGE
1924.50
1924.00
CURB INLET
1924.00
CURB INLET
1924.00
FINISHED GRADE ELEVATION



ELEVATION DATUM

LOCATES 12 WORKING DAYS NOTICE REQUIRED PRIOR TO EXCAVATION
LOCAL CALLING NUMBERS
SPOKANE COUNTY

SITE IBM

SET 1/4\"

NEW OWNER OF SITE

ELEVATION: 1956.00

8-1-1



GRAPHIC SCALE
(IN FEET)
1 inch = 30 ft.

COVER SHEET

MT SPOKANE PEDIATRICS
SPOKANE, WA



storhäug
civil engineering | planning
landscape architecture | surveying
510 east third avenue | spokane, wa | 99202
509.242.1000 | www.storhauginc.com

NO.	DESC.	DATE	BY
5			
4			
3			
2			
1			

DATE	01/07/21
DRAWN	DWL
CHECKED	SPS
PROJECT NUMBER	20-275
DRAWING NO.	C1.0
COVER	

CITY OF SPOKANE PERMIT #
XX-XX-XX-XX
PROPERTY OWNER/APPLICANT:
OWNER: JIM ELMER CONSTRUCTION
3022 E BOONE AVE
SPOKANE, WA 99202
CALL BEFORE YOU DIG: 811