

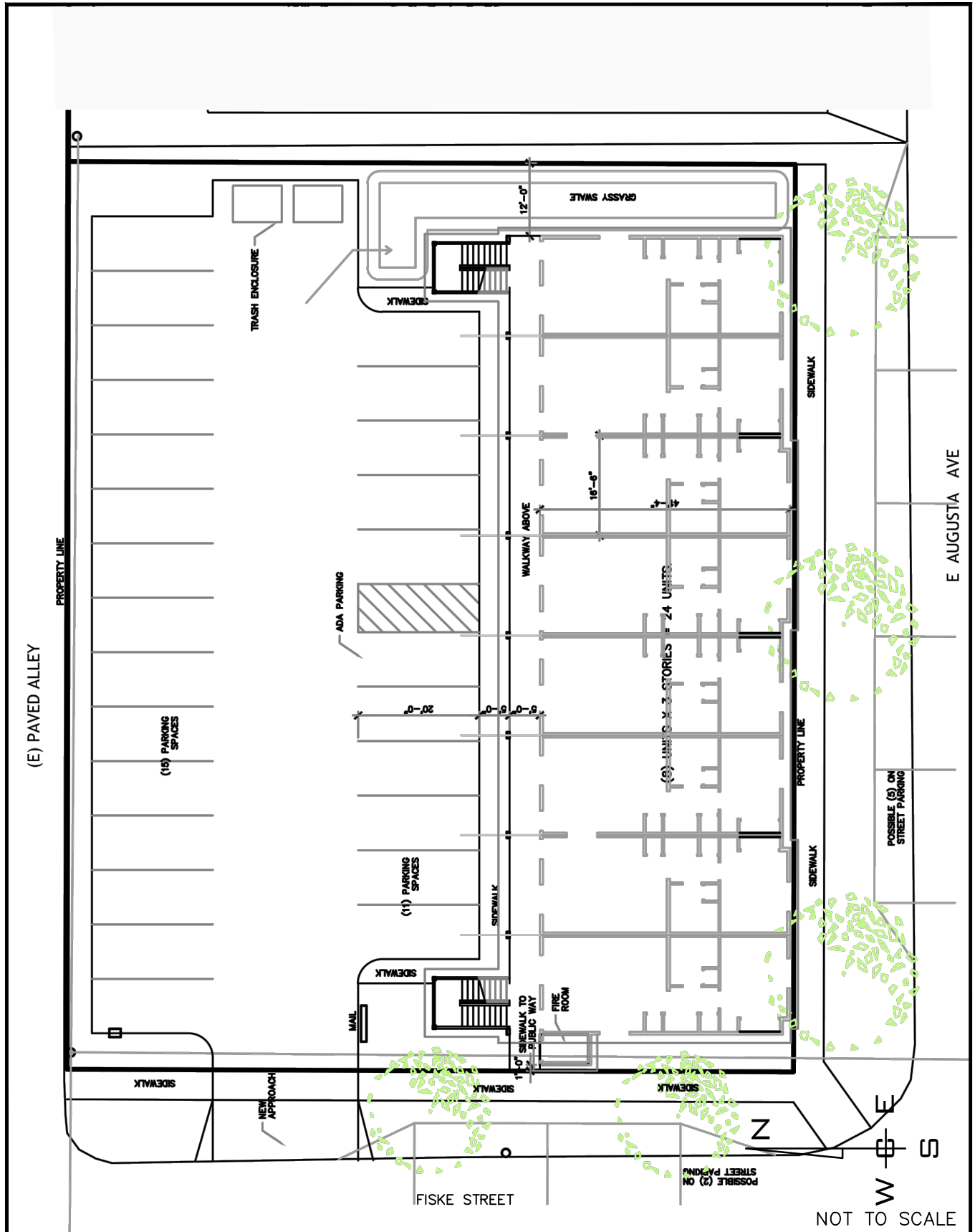
PROJ #: 20-2776
 DATE: 12/22/20
 DRAWN: KMK
 APPROVED: TRW

FIGURE 1

TRIP GENERATION AND DISTRIBUTION
FISKE APARTMENT
1606 NORTH FISKE STREET
SPOKANE, WASHINGTON

VICINITY MAP

WCE
 WHIPPLE CONSULTING ENGINEERS
 CIVIL AND TRANSPORTATION ENGINEERING
 21 S. PINES ROAD
 SPOKANE VALLEY, WASHINGTON 99206
 PH: 509-893-2617 FAX: 509-926-0227



PROJ #: 20-2776
 DATE: 12/22/20
 DRAWN: KMK
 APPROVED: TRW

TRIP GENERATION AND DISTRIBUTION
FISKE APARTMENT
 1606 NORTH FISKE STREET
 SPOKANE, WASHINGTON

FIGURE 2

PRELIMINARY SITE PLAN

WCE
 WHIPPLE CONSULTING ENGINEERS
 CIVIL AND TRANSPORTATION ENGINEERING
 21 S. PINES ROAD
 SPOKANE VALLEY, WASHINGTON 99206
 PH: 509-893-2617 FAX: 509-926-0227