



School District & City Facility Improvement Partnership Projects

June 2018



Schools, City, Library, & Park Facility Interests

- Additional schools for class size reduction at elementary level – need 3 additional middle schools to accommodate moving 6th graders into a 6 -8 grade configuration to reduce class size and overcrowding at elementary schools
- Modernizing or replacing old schools to improve learning environments and school safety
- Additional space for option programs
- Modernizing or replacing aging stadium
- More recreational facilities for City Park users
- Expanding and transforming City libraries
- Better use of City's non -performing properties and assets



Reasons & Benefits for Partnership Ideas

- ***Tax Rates:*** School levy tax rates in Spokane are dropping significantly, starting in 2019, due to State assuming more responsibility for basic education funding
- ***School District Bond Schedule:*** Accelerate reduction in class size and replacement/modernization of old schools
- ***School District/City Bond Plan:*** Opportunity to improve School District and City facilities while still reducing tax rate
- ***Government Efficiencies:*** Save citizens monies by partnering for community benefit



School Tax Rate Information

	<i>Estimated rate per thousand of assessed value</i>				
	2018	2019	2020	2021	2022
SPS Debt Service Fund	\$1.87	\$1.96	\$1.96	\$1.96	\$1.96
SPS General Fund	3.79	1.50	1.50	1.50	1.50
State Schools	1.81	1.81	1.81	1.81	1.81
New State Schools #2	0.99	0.69	0.99	0.99	0.99
	\$8.46	\$5.96	\$6.26	\$6.26	\$6.26

Decrease – from 2018

\$2.50

\$2.20

-

-



Tax Rate Goal of Proposed School District/City Bond Plan

\$2.20

(per thousand of
assessed valuation)

total local tax rate reduction, starting
in 2020

\$1.10

(per thousand of
assessed valuation)

local investment in schools, libraries
and recreation

\$1.10

(per thousand of
assessed valuation)

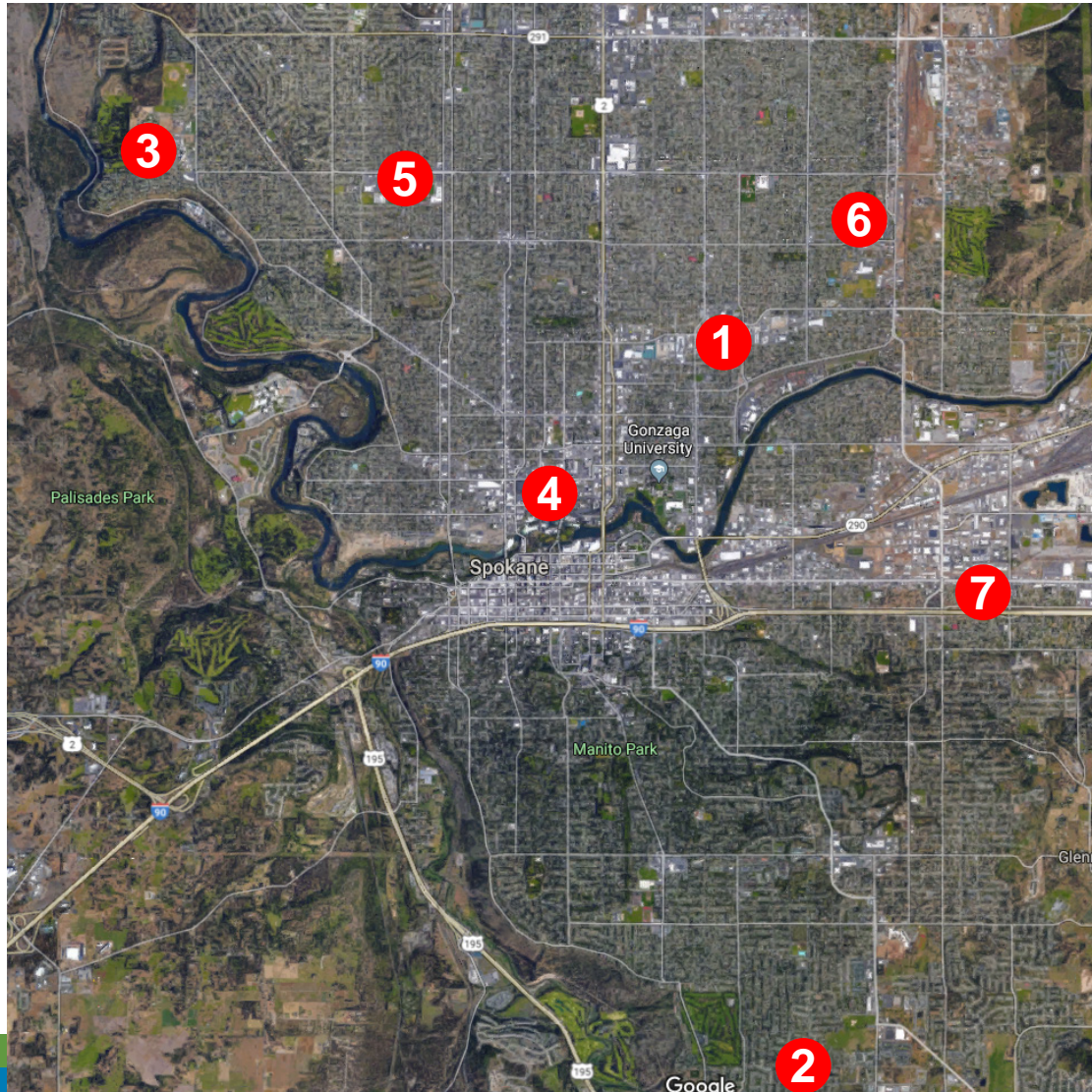
local tax rate reduction for citizens



The Partnership

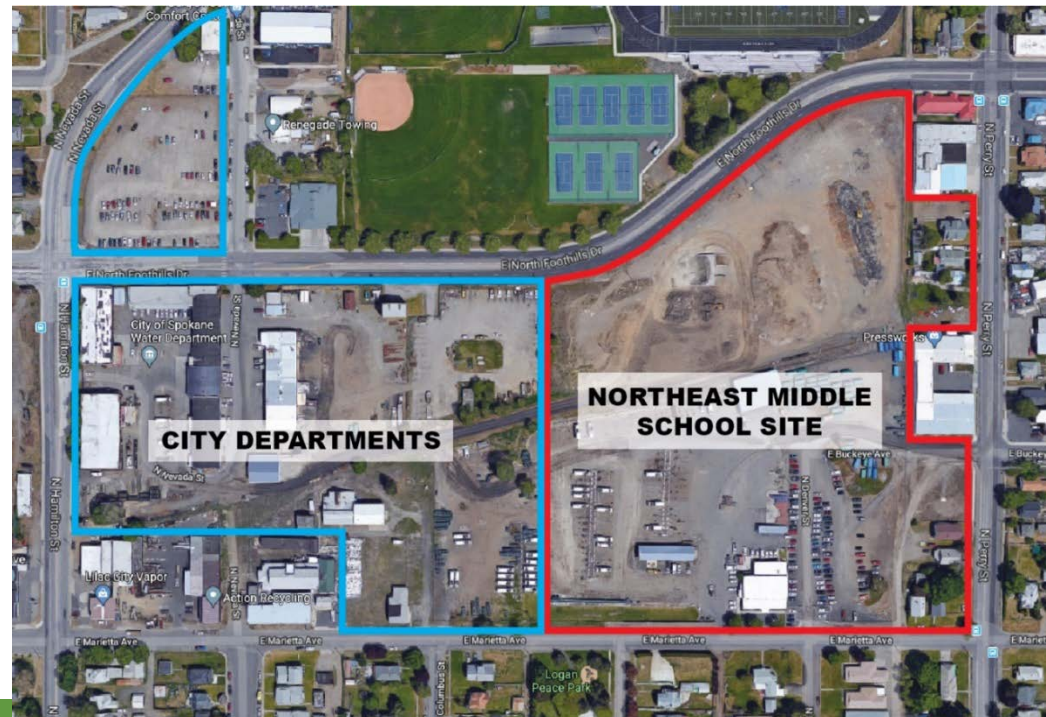
Locations of Potential Partnerships

- 1 Foothills
- 2 Mullan
- 3 Albi Stadium Option 1
- 4 Downtown Stadium Option 2
- 5 Shadle Library
- 6 Hillyard Library
- 7 Sprague Library



The Partnership Foothills — Northeast Middle School

- City provides property for new school
- School District builds new neighborhood middle school on property for Northeast area of School District
- New school would provide gyms and athletic fields for school and community use
- Site could accommodate use by City departments and new middle school



The Partnership Mullan — Southside Middle School

- City provides property for new school
- School District builds new middle school on property for Southside of School District
- New school would provide gyms and athletic fields for school and community use



The Partnership Joe Albi Stadium

— Current Conditions



Facility feels empty during events



No lighting at parking lot



Significant maintenance required



Supervision challenges



Scoreboard needs to be replaced



Facility is too large for most events



Concession roof has failed



Significant maintenance required



Buildings are in disrepair



Supervision challenges



Supervision challenges around facility and site

The Partnership Albi Site

— Northwest Middle School Option 1

- Modernize and downsize Joe Albi Stadium from 30,000 to 5,000 seats
- School District builds new middle school for Northwest area of School District on existing dirt parking area
- Site located adjacent to City's Merkel Fields



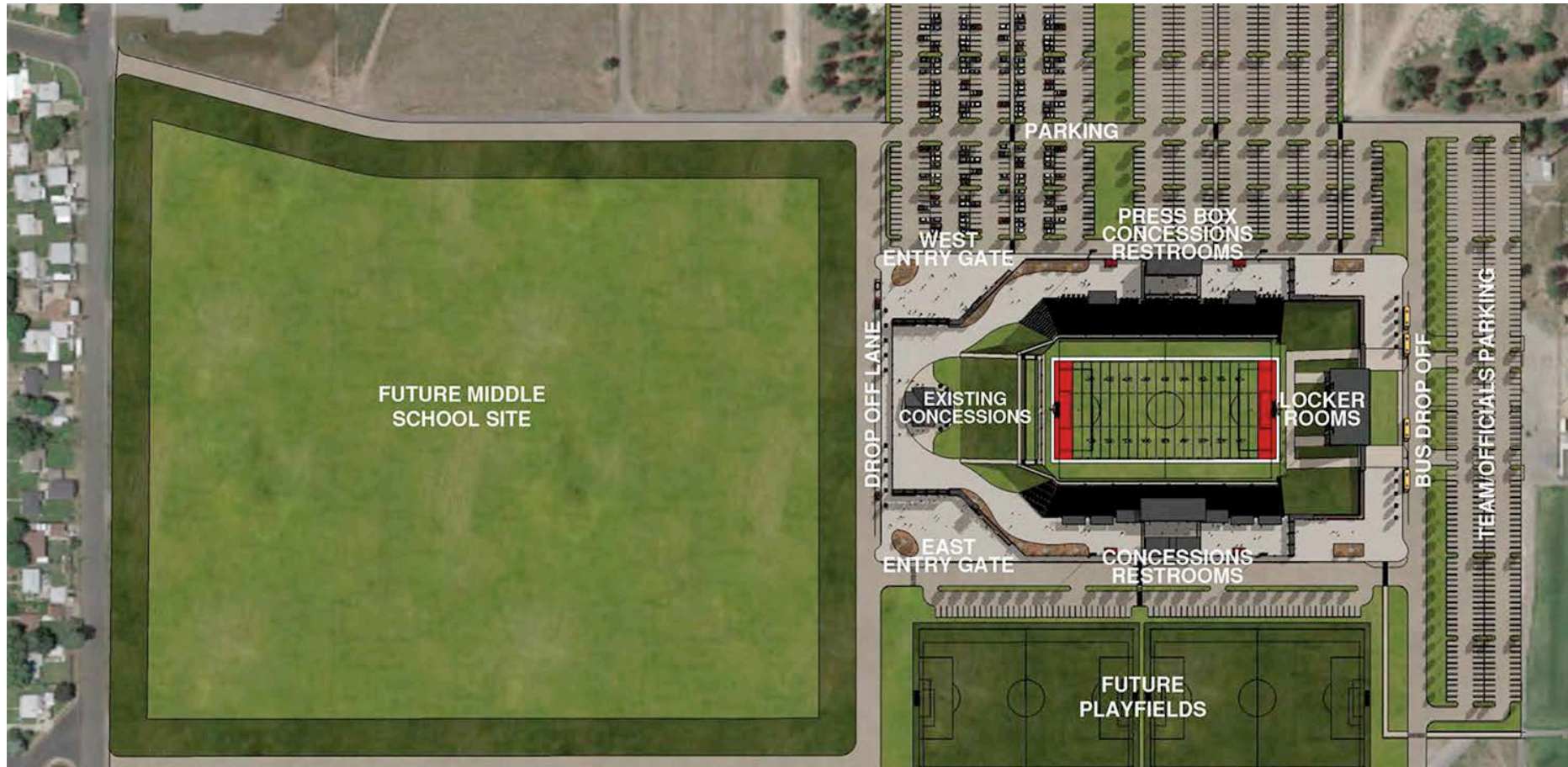
Renovated Albi Stadium

— Capacity 5000 seats

Amenities

Field Surface: New Artificial Turf
Field Lighting: New Lighting
Sound System: New System
Concessions:
Full Capacity Concessions
Toilet Facilities: New

Locker Rooms:
2 Dedicated Locker Rooms
Ticket Booths: New
Parking: New Paved and Lighted Lot
Bus Drop-Off: Yes
Scoreboard: Yes



The Partnership Downtown Albi Stadium

– Option 2

- School District builds new middle school for Northwest area on 20 acres at Albi site
- School District builds new, centrally located, 5,000 seat stadium downtown to replace Albi
- Spokane Public Facility District (SPFD) provides downtown site for stadium by Spokane Arena and new Sportsplex
- SPFD operates stadium for School District as owner – parking free for school events
- City adds additional recreational fields at Merkel on Albi stadium site to meet growing use and recreational demands



New Downtown Stadium

— Capacity 5000 seats

Amenities

Field Surface: New Artificial Turf
Field Lighting: New Lighting
Sound System: New System
Concessions
Full Capacity Concessions
Toilet Facilities: New

Locker Rooms: 2 Dedicated
Locker Rooms
Ticket Booths: New
Parking: Additional parking included
Bus Drop -Off: Yes
Scoreboard: Yes



Convert Albi Stadium to Additional Fields

Capacity Six Fields

Amenities

Demolition of Existing Stadium & Supporting Structures

Field Surface: Six New Artificial Turf Fields

Field Lighting

Concessions: N/A

Toilet Facilities: N/A

Parking: New Paved and Lighted Lot

Drop-Off: Yes



The Partnership Libraries

- Expand Shadle Library to meet demand and include space for Spokane Virtual Learning (SVL)
- Build new Library on School District property adjacent to Libby Center on Sprague and include space for SVL and School District training rooms
- Build new Hillyard Library in conjunction with new Shaw Middle School



School District Projects in Proposed Bond Plan - 2018 to 2024

School District Projects

- 3 new middle schools
 - Northeast, Northwest, Southside
- 3 replacement middle schools
 - Glover, Sacajawea, Shaw
- Stadium project
- Lewis & Clark commons
- On Track Academy
- Libby remodel
- Technology
- Safety
- Smaller building improvement projects

<i>Bond</i>	<i>\$505.3 million</i>
<i>State Match</i>	<i>\$ 57.9 million</i>
<i>Total</i>	<i>\$563.2 million</i>

City Projects

- 3 new libraries
 - Hillyard, Sprague, East Central
- 4 modernized libraries
 - Shadle, Downtown, Southhill, Indian Trail
- Expansion of fields at Merkel Park

Bond = \$103.0 million

Tax Rate Impact of Proposed School District/City Bond Plan

\$2.20

(per thousand of
assessed valuation)

total local tax rate reduction, starting
in 2020

\$1.10

(per thousand of
assessed valuation)

local investment in schools, libraries
and recreation

\$1.10

(per thousand of
assessed valuation)

local tax rate reduction for citizens



Delayed School Bond Plan 2021 to 2027

Considerations

- Cost of same projects significantly more than a 2018 -2024 bond schedule - *approximately \$100 mil more due to construction cost escalation*
- Tax rate increase for 2021 bond – *approximately \$.80 per thousand of assessed valuation*
- Delays reduction of K-3 class size for 3+ years
- Delays moving 6th grade to middle schools for 3+ years
- Property acquisition for new middle schools may be needed



Feedback on Proposed Partnership Plan from Key Focus Groups

- Citizens Advisory Committee
- Grade Configuration and Boundary Study Committees
- Sports Booster Groups
- Greater Spokane Incorporated Board
- Spokane Education Association Executive Council
- Citizens for Spokane Schools
- Spokane Sports Commission Board
- Survey of parents and staff



School District/City Partnership Ideas

Next Steps

- Refine various School District and City facility cost estimates
- Determine stadium option
- Continue to study, seek legal input, and determine agreements needed for implementing partnership ideas
- Decide by mid -July whether to place School District/City facility bond projects on November 2018 election ballot
- Hold joint School Board and City Council meeting on August 1, 2018 to adopt bond election resolutions for November 6, 2018 election
- Continue to study School District/City Phase 2 partnership ideas (Hamblen Park, Qualchan , Comstock, Space of Community School)

