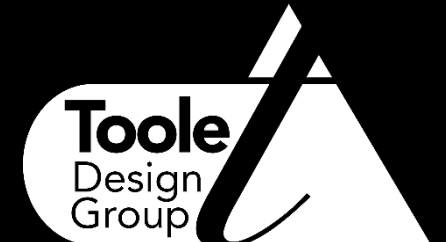


SPOKANE

#everyplacecounts



Spokane



Context » What we saw



Context » What we saw



Context » What we saw

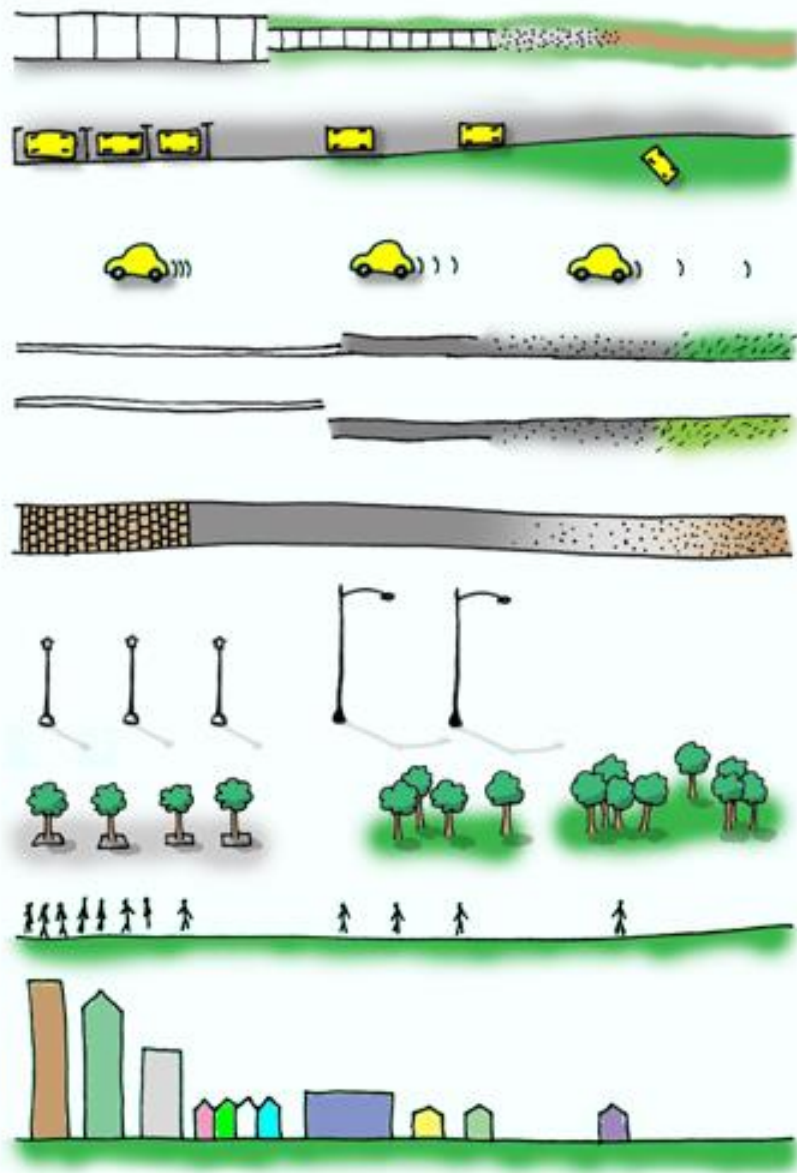


Context » What we saw



Engagement

Transect



URBAN

RURAL



Urban



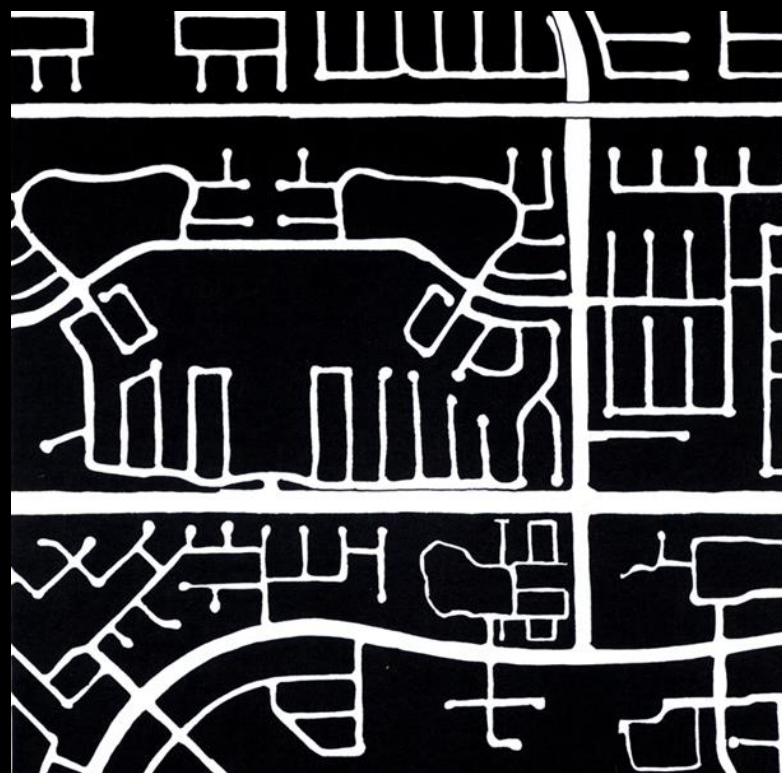
Suburban



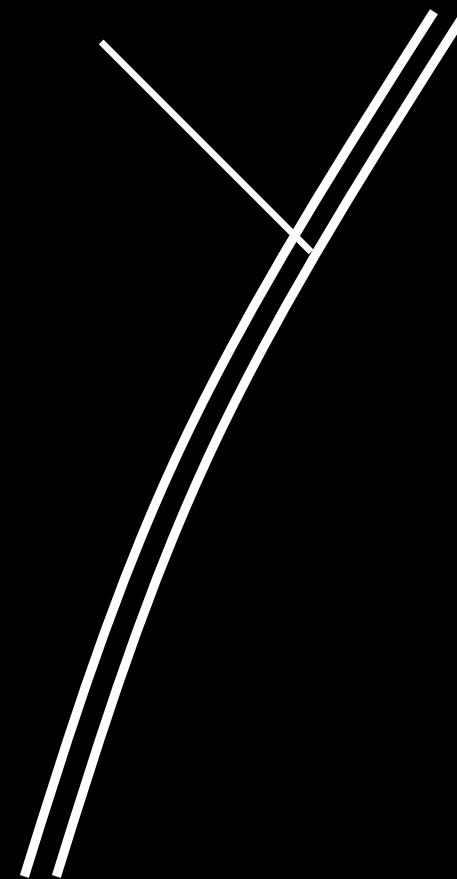
Rural



Urban



Suburban



Rural

Spokane's Challenge Outcomes

After seeing, learning and evaluating we decided on some core values and next steps to guide our future collaborative work in reimagining our transportation network.

DRAFT VISION STATEMENT

The vision will be successful if residents and business owners stay in Spokane and have the strongest voice in determining outcomes and receive the receptive ear of local and state decision makers.

Value Statements

- » Ensure public investment is used to strategically encourage private investment
- » Land uses should be supported by planning, infrastructure, financial incentives, and long-term assistance.
- » Promote strategic redevelopment of private vacant land and public right-of-way
- » Private redevelopment and infill needs to reflect and serve the diverse community
- » Public infrastructure should reflect the values of the community including the impacted neighborhood.

Connectivity / Reconnections (crossing 1-90)

- » Widen pedestrian overpasses and make ramps gradual to accommodate bicycles, walkers, scooters



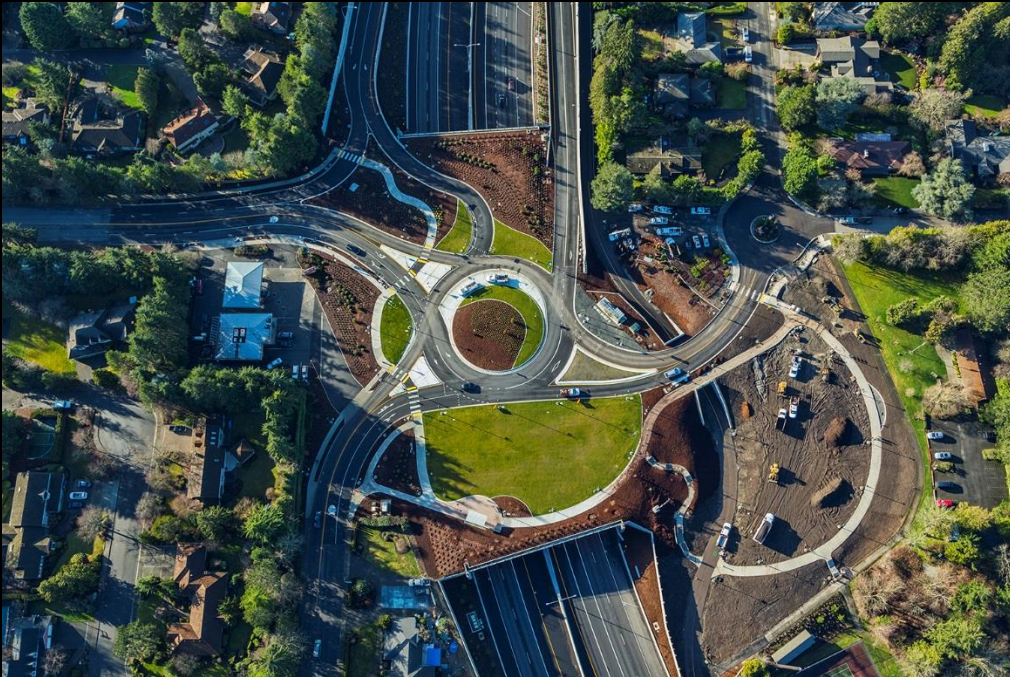
Connectivity / Reconnections (crossing 1-90)

- » Greatly improve lighting at underpasses and wayfinding signage to indicate thorough-ways and / or provide directions to key locations



Connectivity / Reconnections (crossing 1-90)

- » Investigate a partial lid or cap over depressed areas of the interstate to increase north/south connectivity (multi-use for commercial/residential options)



Connectivity / Reconnections (crossing 1-90)



Connectivity / Reconnections (crossing 1-90)

- » Investigate rebuilding interstate as a multi-way boulevard

North Spokane Corridor

- » Design areas underneath the interstate with active community involvement to incorporate neighborhood culture, art, and history (possible uses: parks parklets, farmer's market, art installations, stormwater treatment/management, new housing, community gardens)



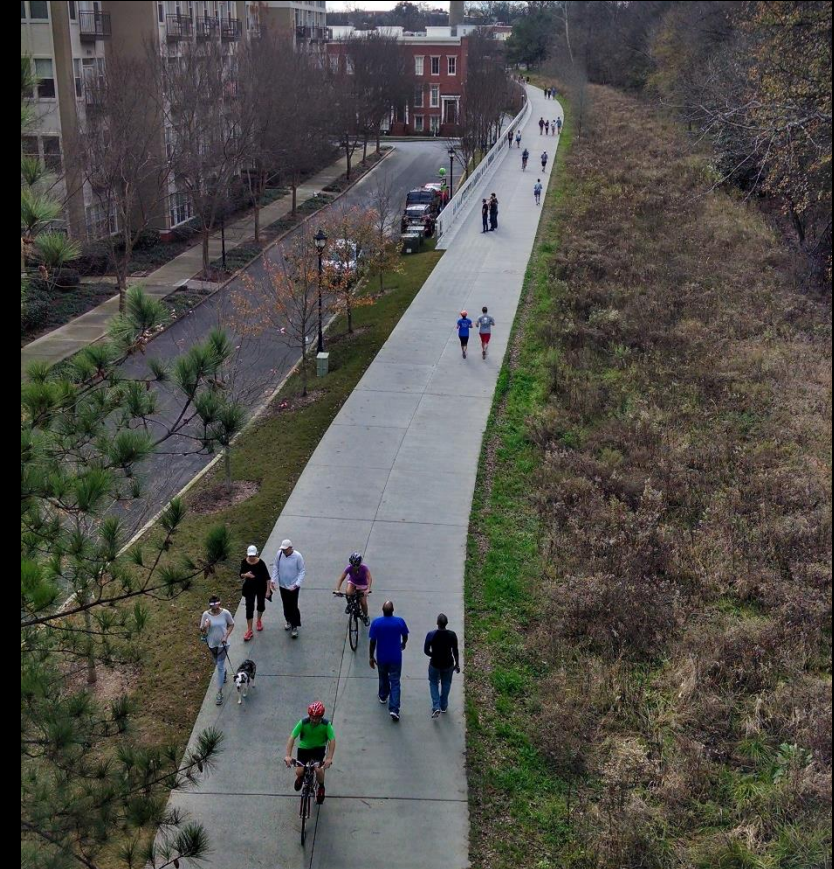
North Spokane Corridor

- » Start using and programming underutilized open spaces (where the coming highway will be) with year-round coordinated community activity calendar



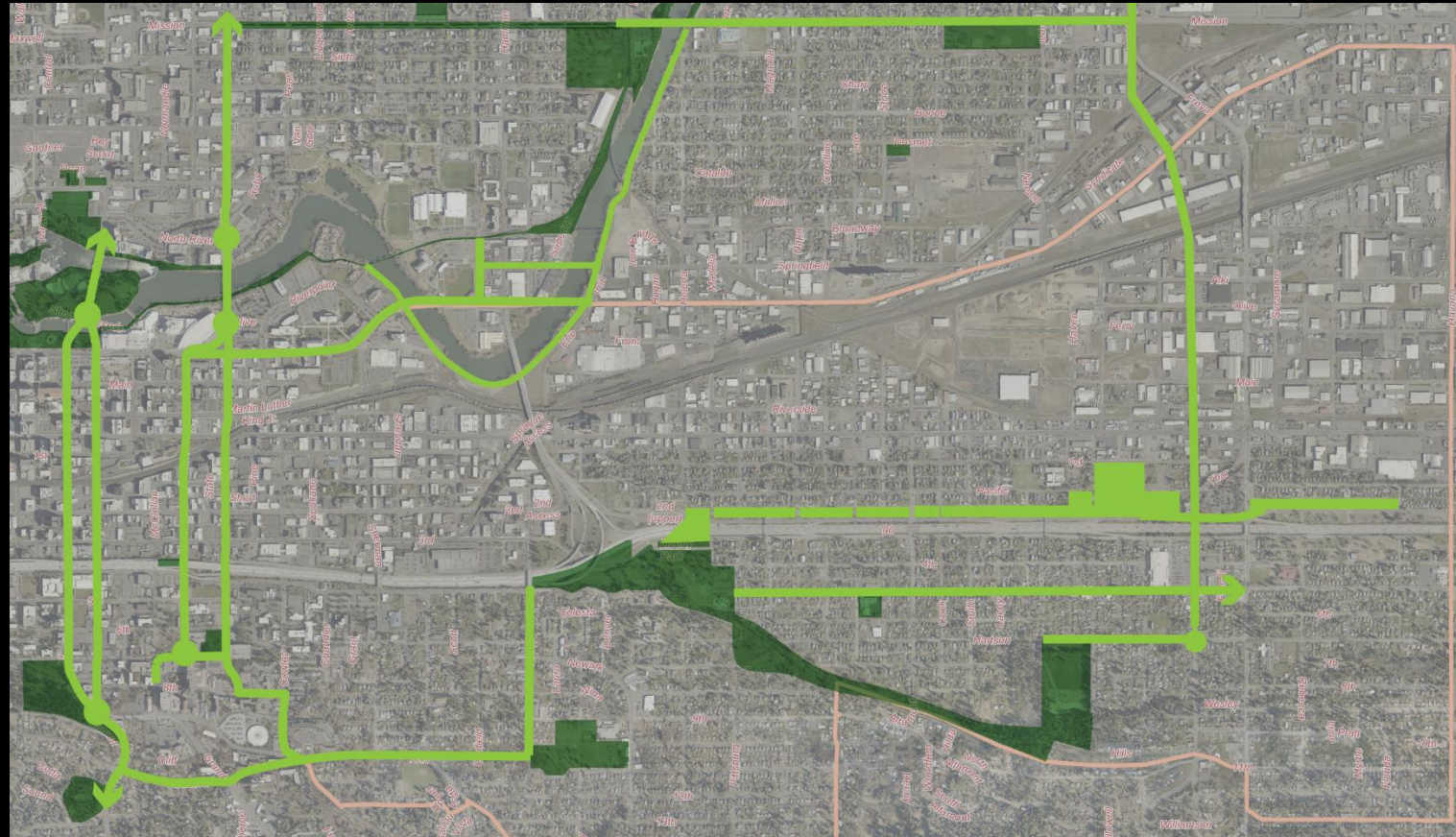
North Spokane Corridor

» Begin a detailed design and actually construct the Children of the Sun Trail now



Open Space and Green Infrastructure

- » Create a connected network of parks and trails to form an open space system and a recreational loop



Open Space and Green Infrastructure

- » Incorporate enhanced programming for all ages, including educational, historic, and cultural civic art features throughout the neighborhood



Open Space and Green Infrastructure

- » Air and water quality, wildlife corridors, and tree canopy coverage. (layered within the streets and open spaces to solve multiple problems)



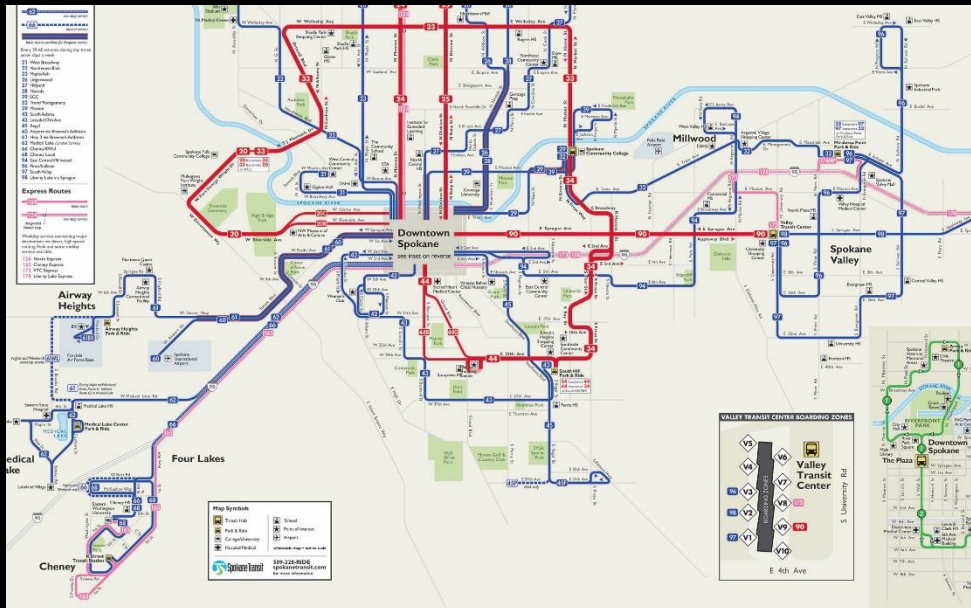
Safety and Accessibility

- » Improve the comfort and safety of existing accessible routes for all mobility options throughout the neighborhood (e.g. including more crosswalks, increased lighting, and possible policing)



Safety & Accessibility

- » Give all citizens access to multi-modal transportation & information (ex. maps & apps)



16th & M (northbound)		1776 WHERE REVOLUTIONS BEGIN *** This demo screen is brought to you by TransitScreen.com K & 15th		capital bikeshare BIKES DOCKS Thomas Circle 19 12 K & 14th	
S2	Northbound to Silver Spring Station	4	4		
S4	Northbound to Silver Spring Station	6	20		
16th & M (southbound)					
S2	Southbound to Federal Triangle	0			
S4	Southbound to Federal Triangle	1			
S2	Southbound to McPherson Square	3	3		
M Farragut North: 3 min bike ride 8 min walk					
RD	Shady Grove	2	5		
RD	Glenmont	3	8		
D1	Eastbound to Federal Triangle	0			
D3	Westbound to Dupont Circle	1	9		
16Y	Eastbound to McPherson Square	1	1		
D6	Westbound to Dupont Circle	5			
80	Southbound to Kennedy Center	11			
M McPherson Square: 5 min bike ride 7 min walk					
OR	Largo Town Center	1			
OR	New Carrollton	3			
BL	Franconia-Springfield	3			
OR	Vienna	4			
BL	Largo Town Center	5			

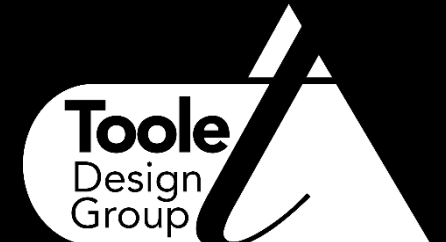
Safety & Accessibility

- » Incorporate public transit agencies into community needs of connectivity to provide improved routing and rideshare possibilities

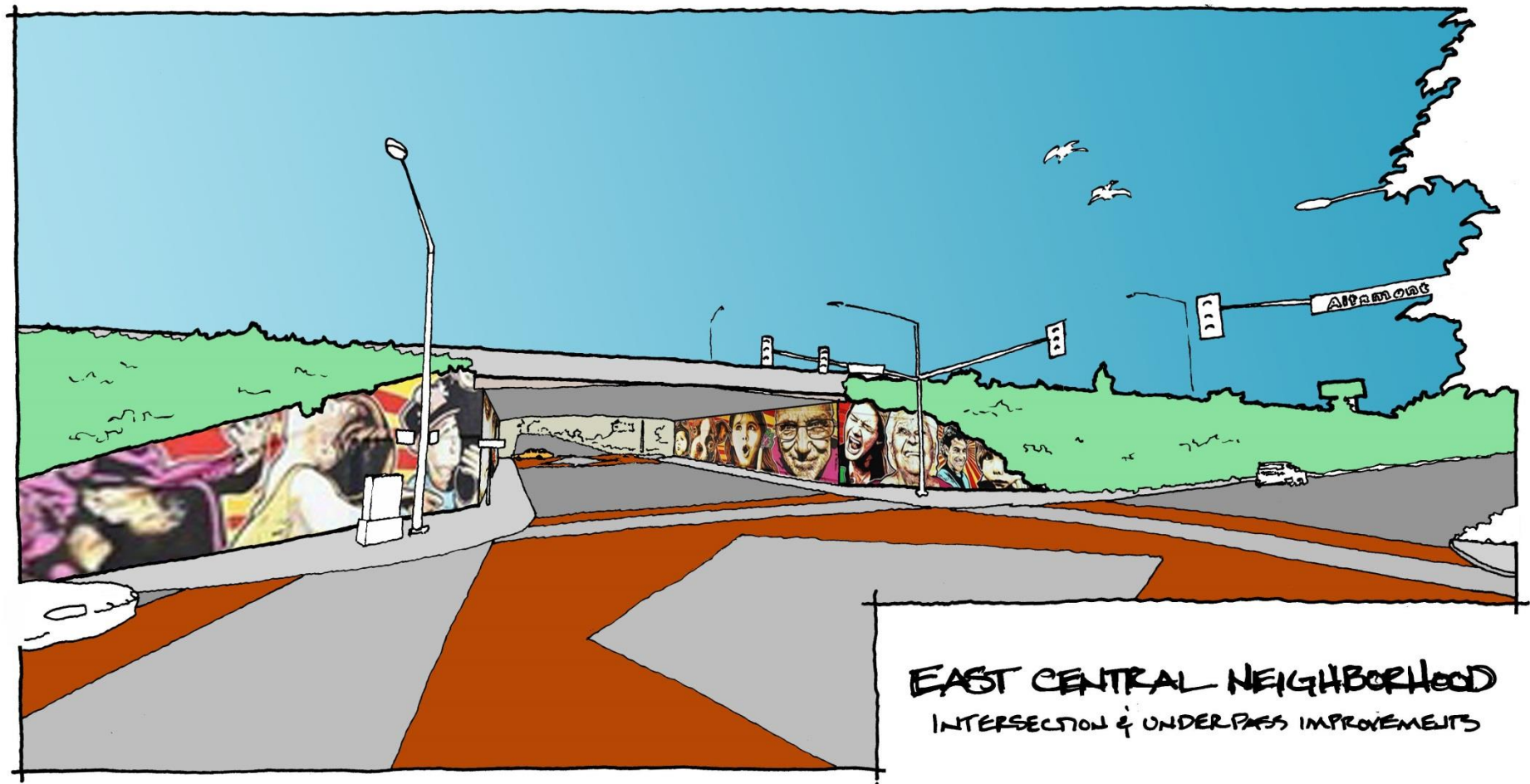


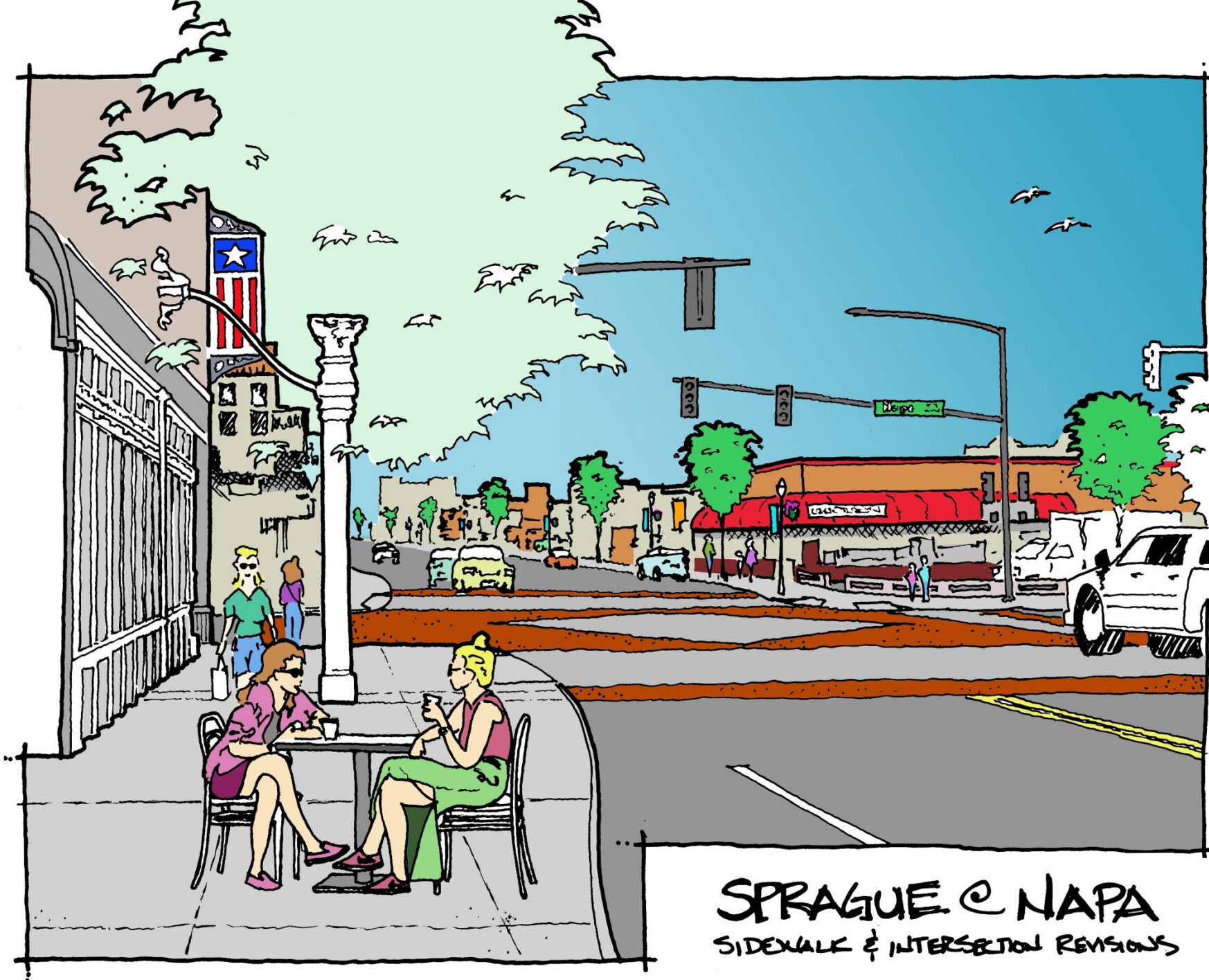
Spokane

Thank you!



Energized & Empowered Participants





SPRAGUE @ NAPA
SIDEWALK & INTERSECTION REVISIONS