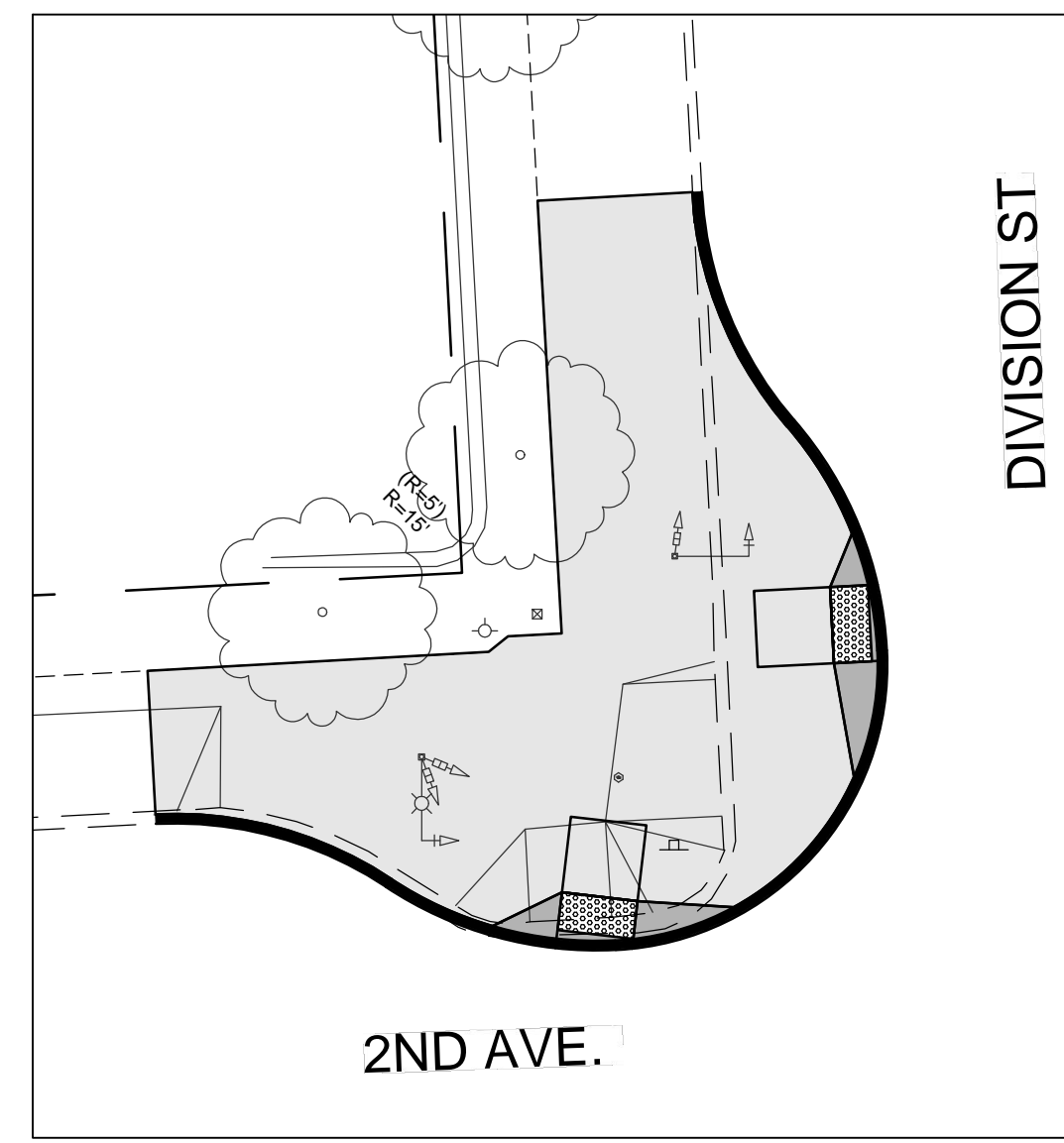
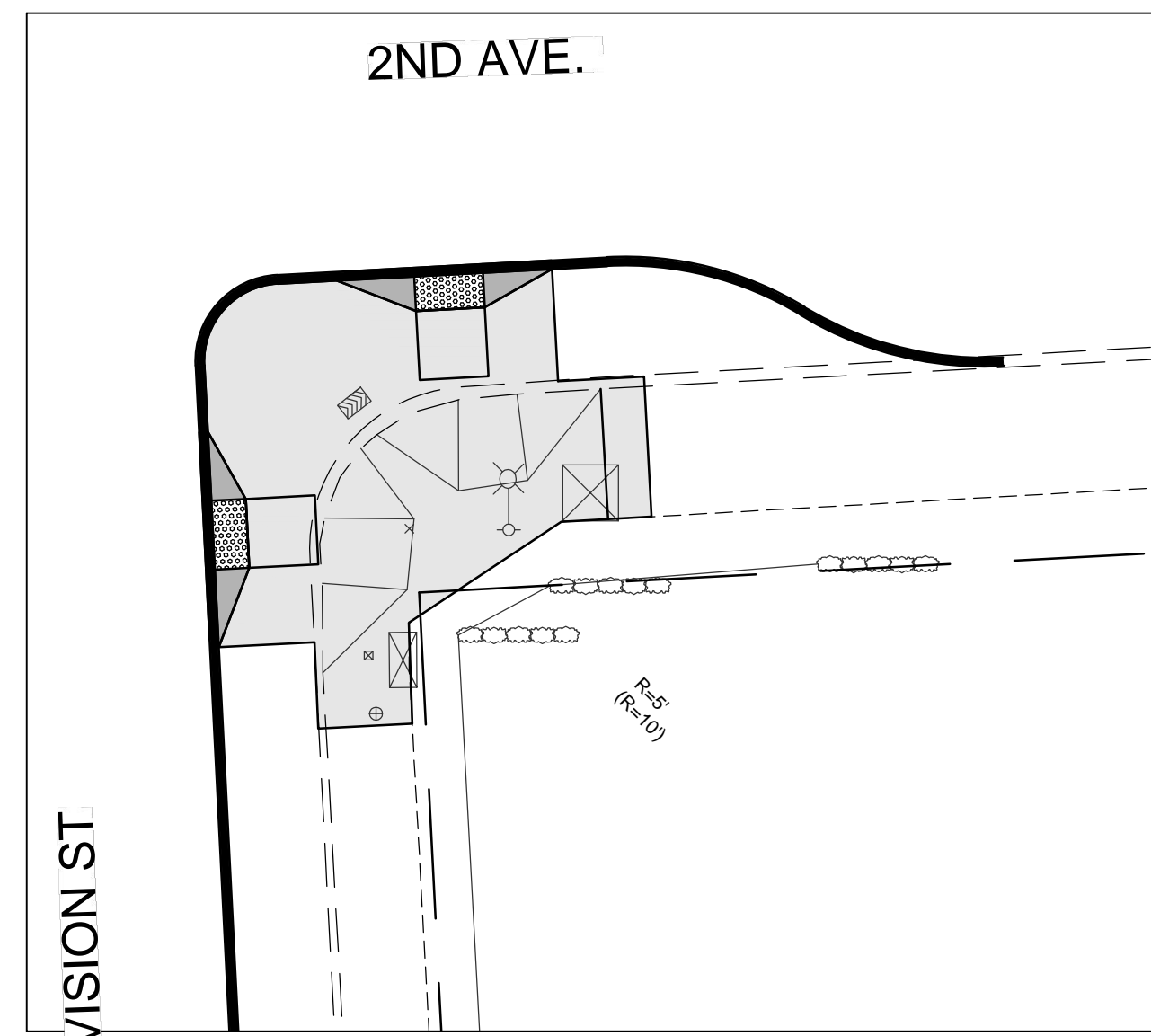


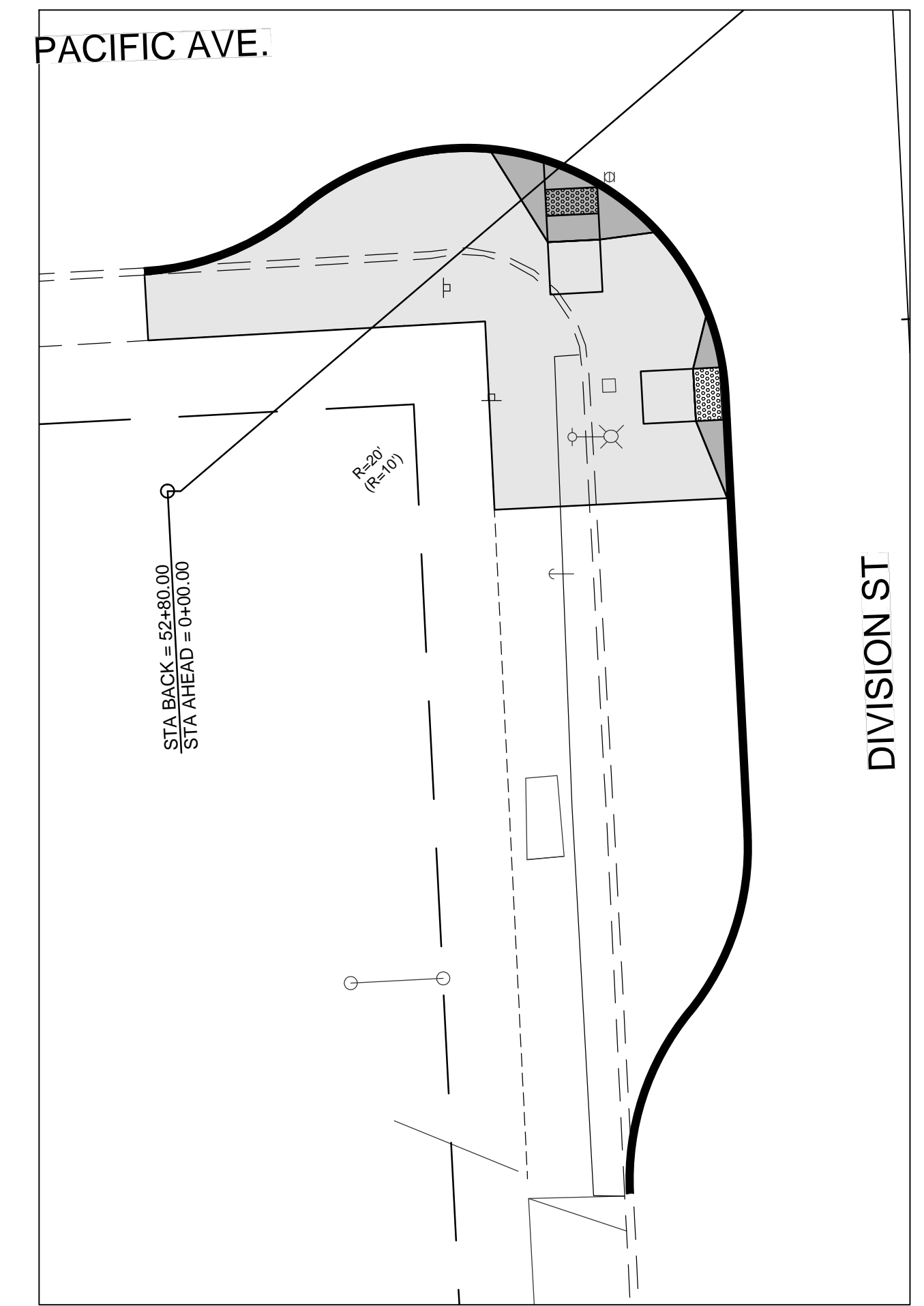
D1 DIVISION ST. & 3RD AVE.
R3 NORTHEAST CORNER



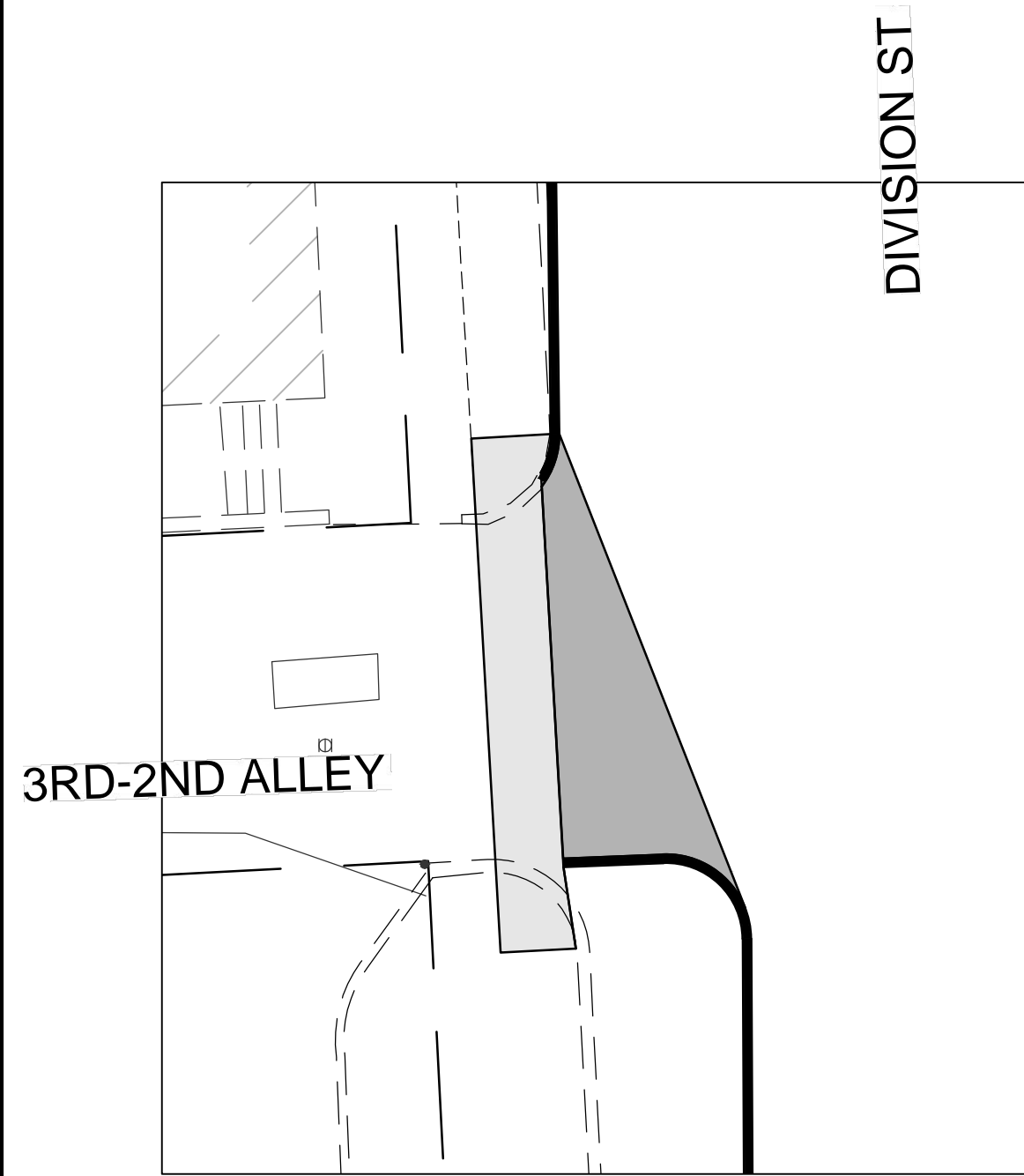
D2 DIVISION ST. & 2ND AVE.
R3 NORTHWEST CORNER



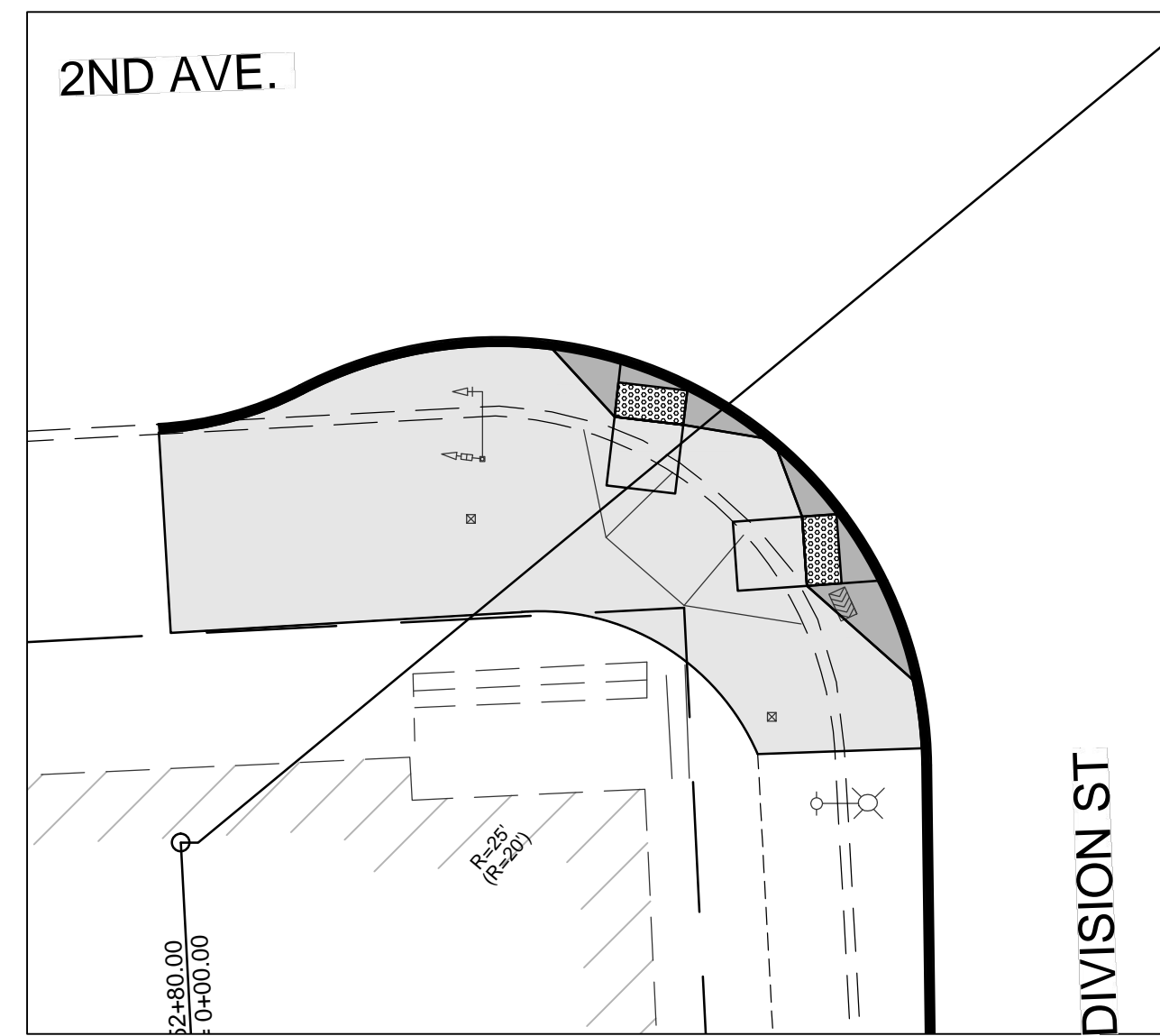
D3 DIVISION ST. & 2ND AVE.
R3 SOUTHEAST CORNER



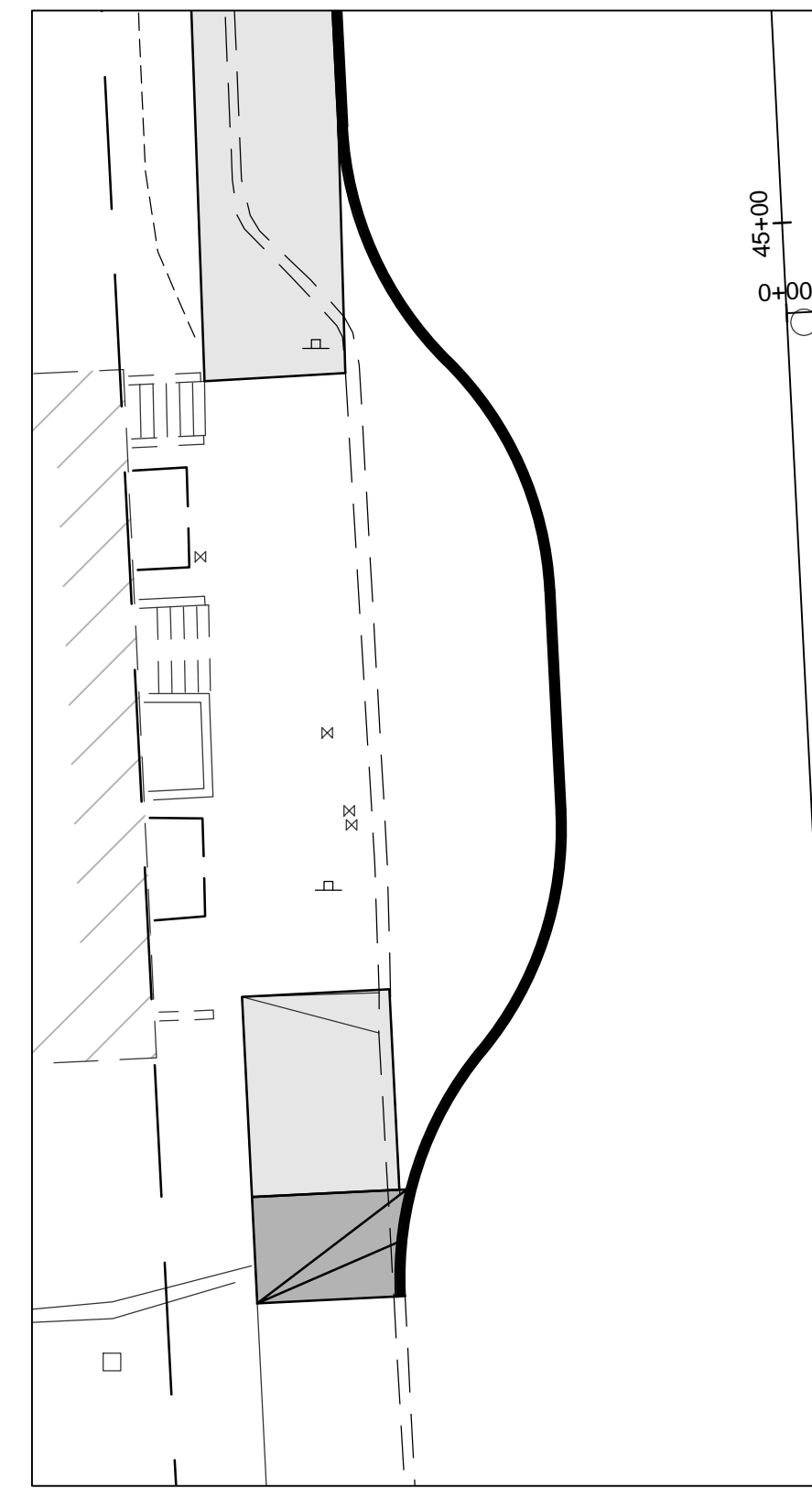
D4 DIVISION ST. & PACIFIC AVE.
R3 SOUTHWEST CORNER



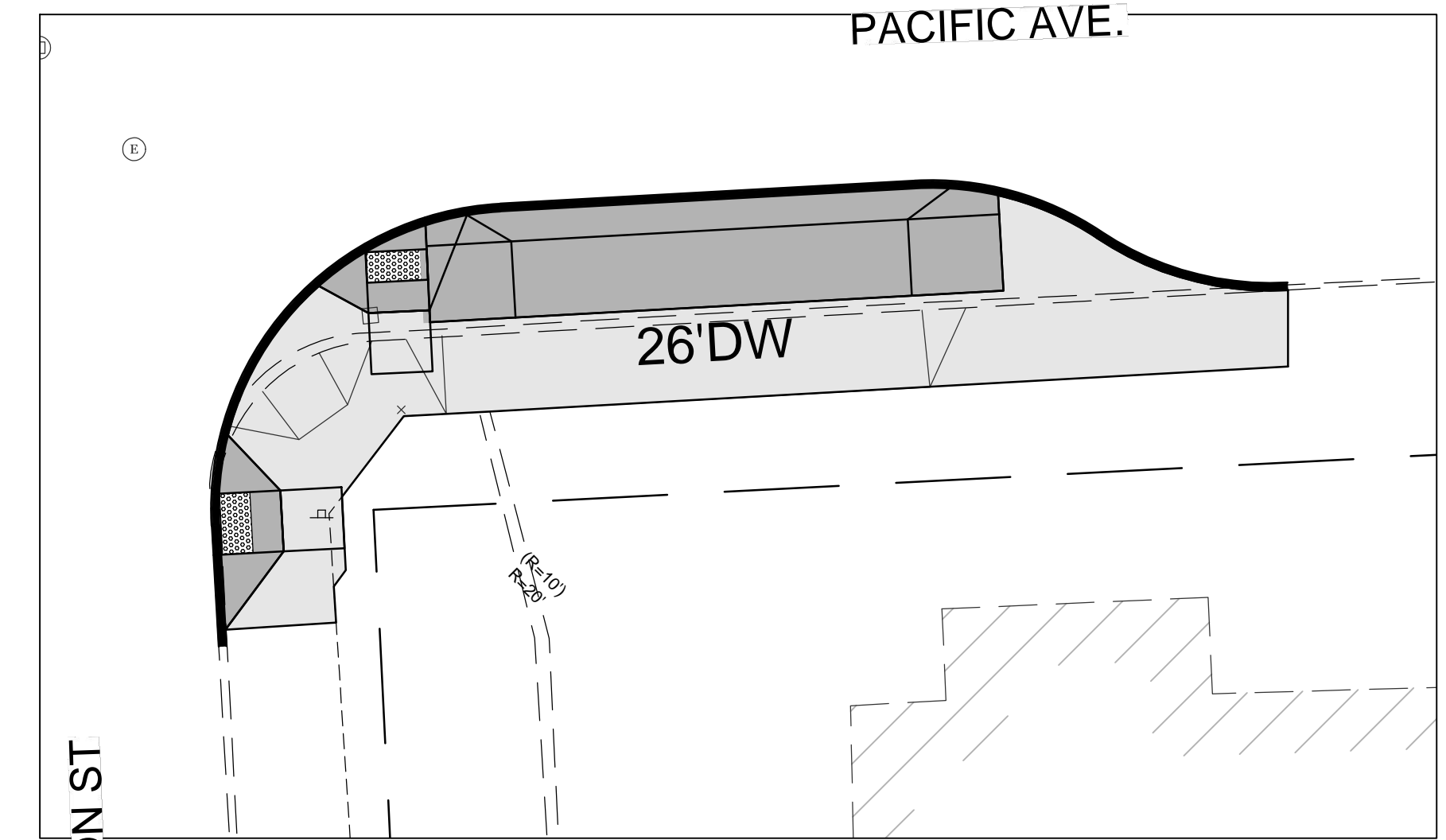
D5 3RD AVE. TO 2ND AVE.
R3 ALLEY - WESTSIDE



D6 DIVISION ST. & 2ND AVE.
R3 SOUTHWEST CORNER



D7 DIVISION ST. & SHORT AVE.
R3 WESTSIDE



D8 DIVISION ST. & PACIFIC AVE.
R3 SOUTHEAST CORNER

R3
3 OF ??

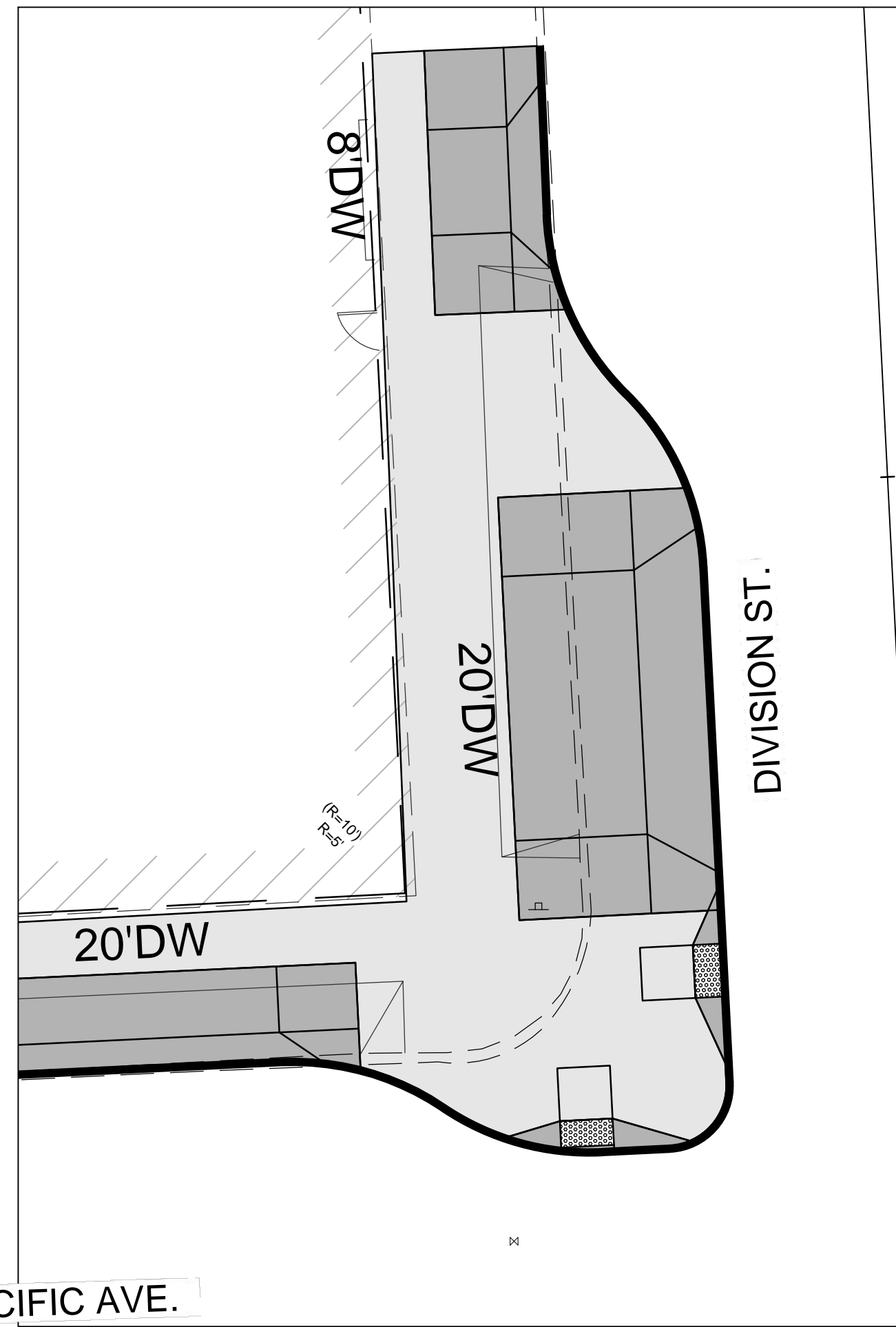
Plotted On Nov 16, 2016 - 1:28pm

DATE	BY	PROJ	DESCRIPTION	DATE	BY	PROJ	E.F.N. U.S.N.	FROM	TO	COUNCIL	ACCEPT	DATE	FROM	TO	ORD. NO.	DATE	FILE NO.
REVISIONS													AS BUILT				
GRADE ORDINANCE LIST													NAVD88 DATUM				

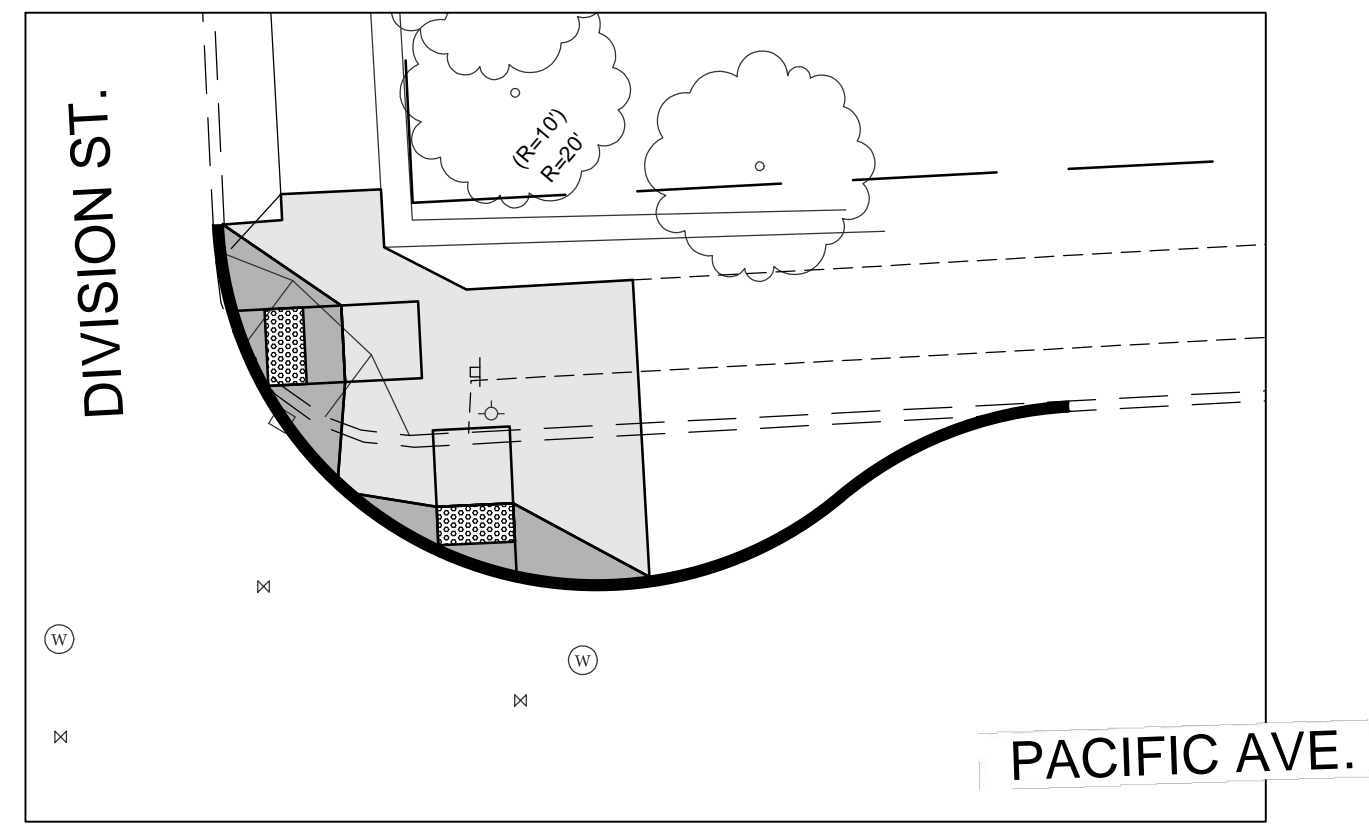
NAVDS8 = (OLD CBM ELEV.) (13.13)	AS OF JANUARY, 2000 USE NORTH AMERICAN VERTICAL DATUM OF 1988 (NAVD88)
SE CORNER, DIVISION & SPRAGUE 15.1' EECL, 14.0' SSCL	
NAVDS8 ELEV. 1907.554	CURRENT C.O.S. DESIGN STANDARDS ADOPTED FEB. 2007
CBM NO. 0N 0E	BY JAB 10/20/16
BAR IS ONE INCH ON ORIGINAL DRAWING	DRAWN JAB 10/20/16
HORIZONTAL PLAN PROFILE 1" = 10'	REVISED ?? 7/??
VERTICAL PROFILE ONLY NA	CHECKED RKP 11/20/16
IF NOT ONE INCH ON THIS SHEET, ADJUST SCALES ACCORDINGLY	APPROVED RKP 11/20/16
SCALE	

CITY OF SPOKANE, WASHINGTON
DEPARTMENT OF ENGINEERING SERVICES
808 WEST SPOKANE FALLS BLVD.
SPOKANE, WASHINGTON 99201-3343
(509) 625-6700

CONSTRUCTION DRAWING	NOT AS-BUILT	PROJECT NAME: DIVISION GATEWAY	SEGMENT LIMITS: INTERSECTION DETAILS	TYPE OF IMPROVEMENT: DETAIL
		CITY PROJECT NUMBER: 2014149	CITY PLAN NUMBER: 19-25-43	
		PROJECT LIMITS: 3RD AVENUE TO SPOKANE FALLS BOULEVARD	EFN: 2014149_MAJ.DWG	20-25-43



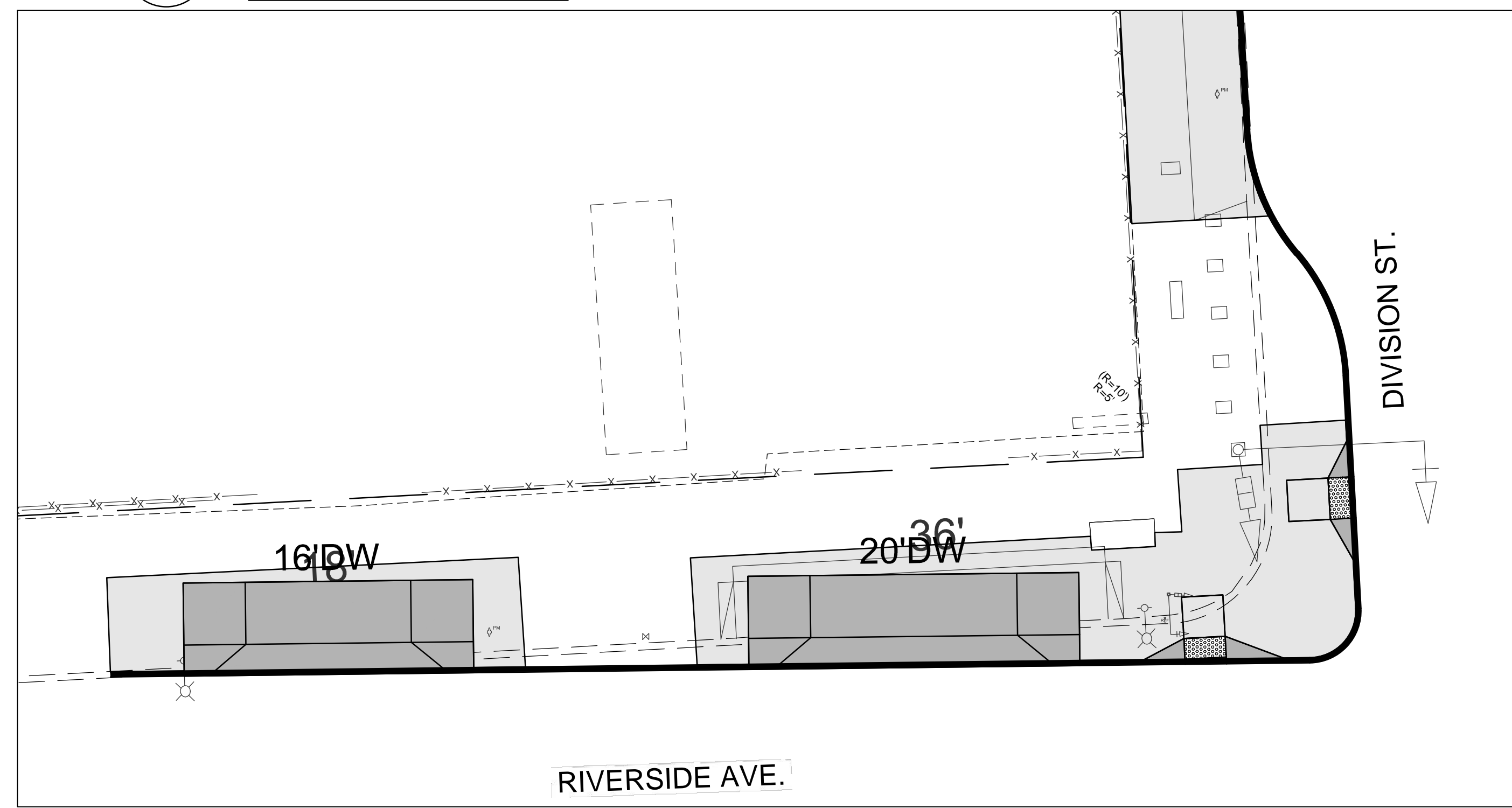
D9
R4
DIVISION ST. & PACIFIC AVE.
NORTHWEST CORNER



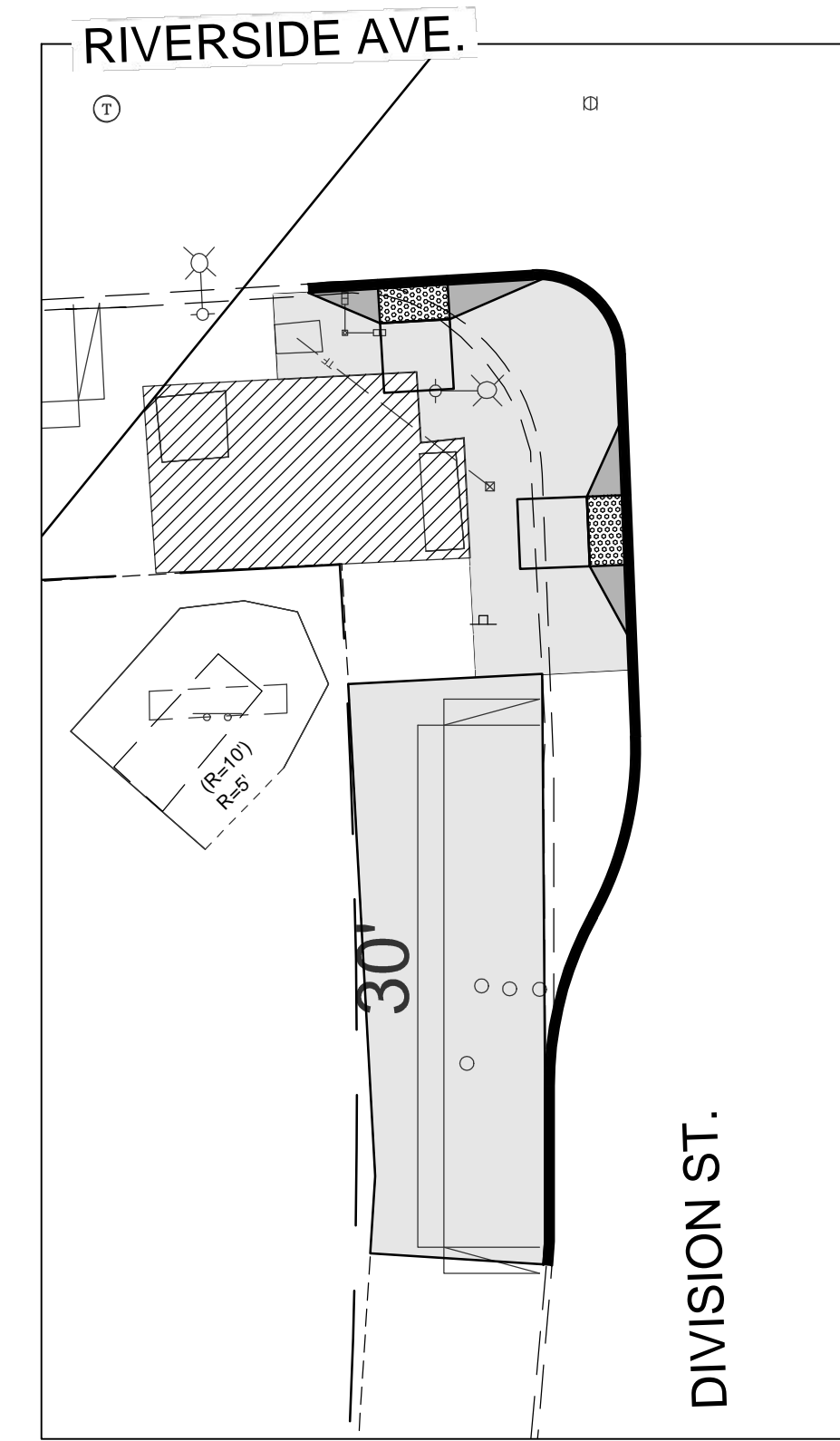
D10
R4
DIVISION ST. & PACIFIC AVE.
NORTHEAST CORNER



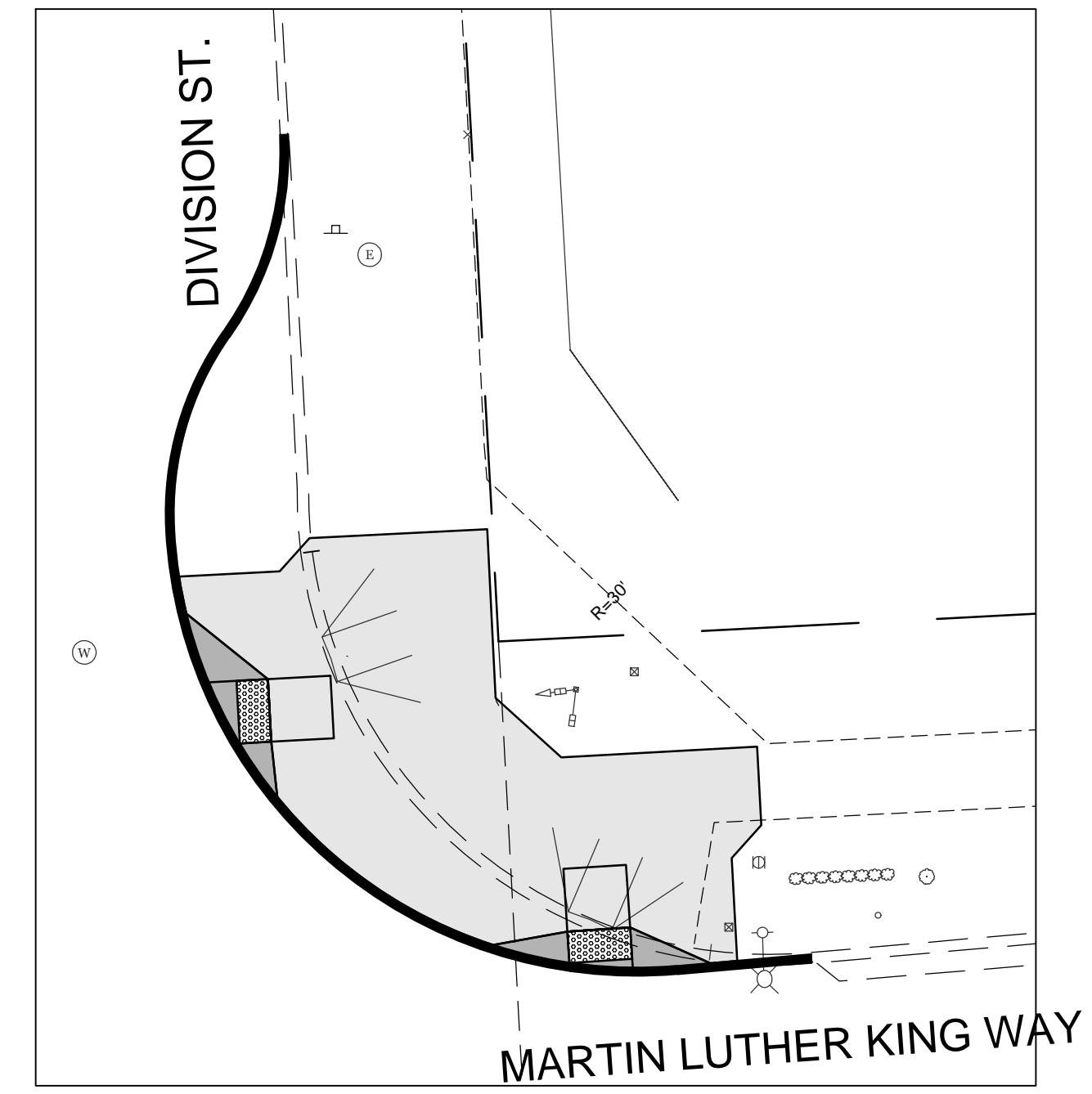
D11
R4
DIVISION ST. & SPRAGUE AVE.
NORTHWEST CORNER



D12
R4
DIVISION ST. & RIVERSIDE AVE.
NORTHWEST CORNER



D13
R4
DIVISION ST. & RIVERSIDE AVE.
SOUTHWEST CORNER



D14
R4
DIVISION ST. & MLK WAY
NORTHEAST CORNER



R4
4 OF ??

Printed On Nov 16, 2016 - 1:29pm

DATE	BY	PROJ	DESCRIPTION	DATE	BY	PROJ	E.F.N. U.S.N.	FROM	TO	COUNCIL	ACCEPT	DATE	FROM	TO	ORD. NO.	DATE	FILE NO.

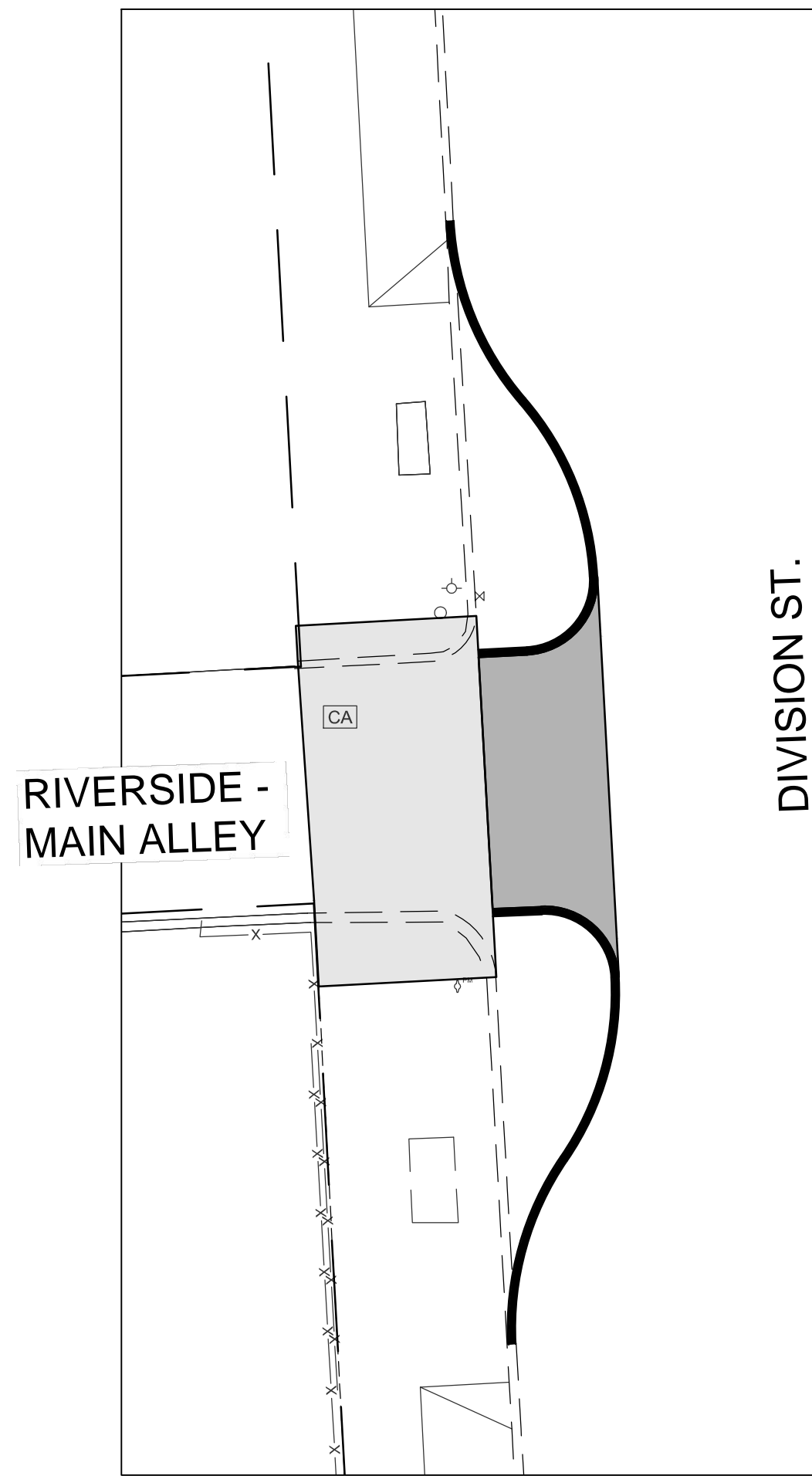
NAVDS8 = (OLD CBM ELEV.) (13.13)	AS OF JANUARY, 2000 USE NORTH AMERICAN VERTICAL DATUM OF 1988 (NAVD88)
BENCH MARK LOCATION SE CORNER, DIVISION & SPRAGUE 15.1' EECL, 14.0' SSCL	
NAVDS8 ELEV. 1907.554	BAR IS ONE INCH ON ORIGINAL DRAWING
CBM NO. 0N 0E	HORIZONTAL PLAN/PROFILE 1" = 10'
NAVDS8 DATUM	VERTICAL PROFILE ONLY NA
	SCALE



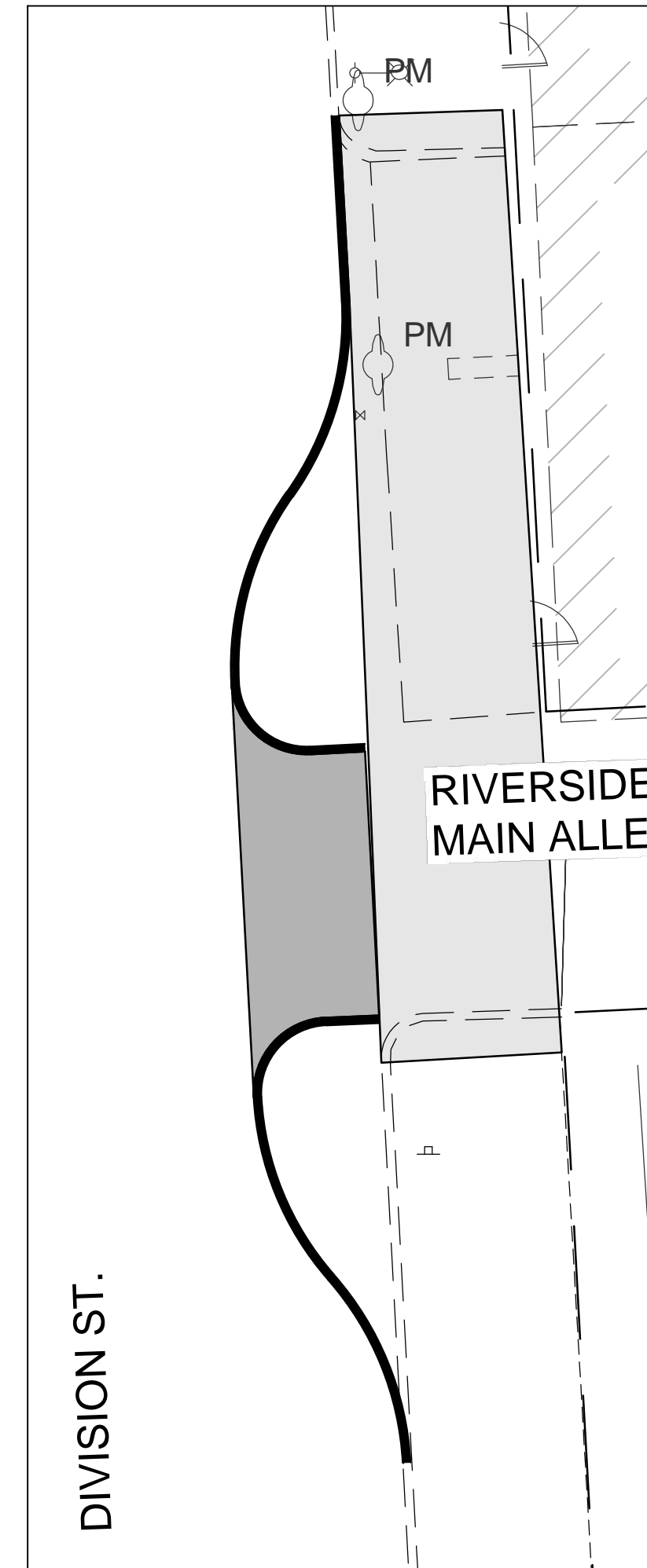
CITY OF SPOKANE, WASHINGTON
DEPARTMENT OF ENGINEERING SERVICES
808 WEST SPOKANE FALLS BLVD.
SPOKANE, WASHINGTON 99201-3343
(509) 625-6700

CONSTRUCTION DRAWING
NOT AS-BUILT

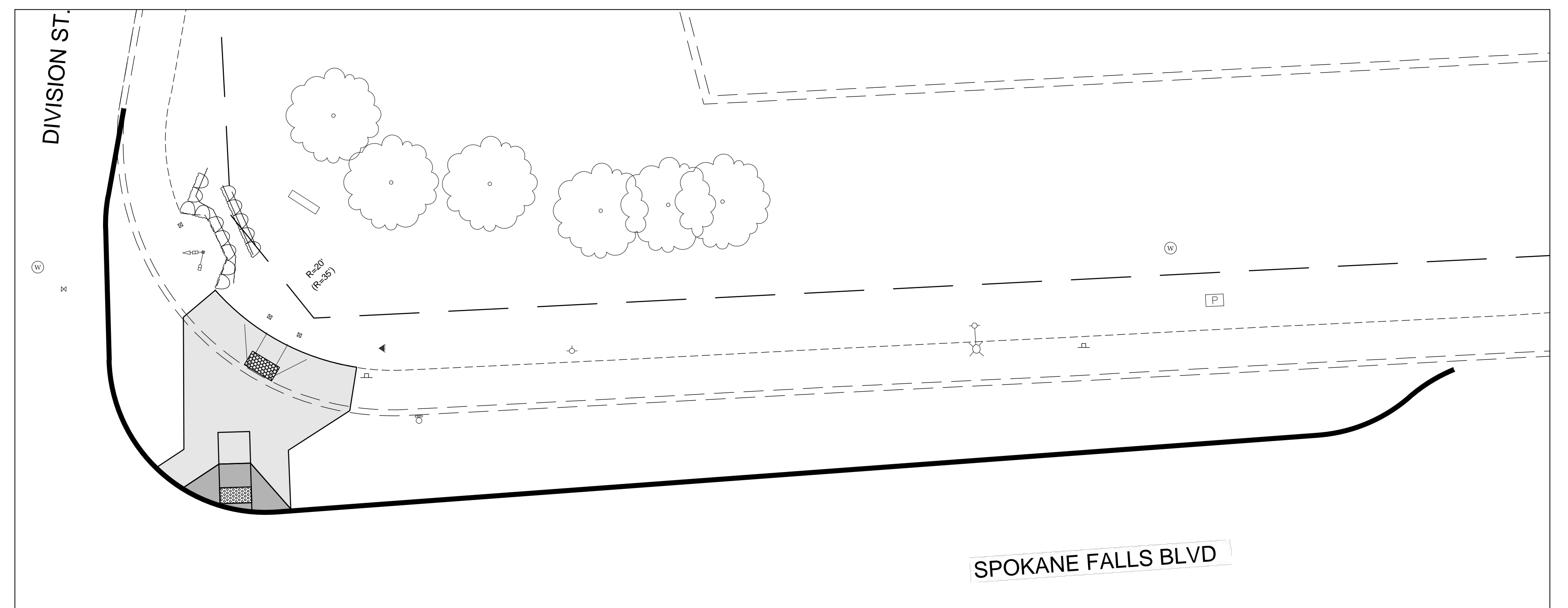
PROJECT NAME: DIVISION GATEWAY	SEGMENT LIMITS: INTERSECTION DETAILS	TYPE OF IMPROVEMENT: DETAIL
CITY PROJECT NUMBER: 2014149	CITY PLAN NUMBER: 19-25-43	
PROJECT LIMITS: 3RD AVENUE TO SPOKANE FALLS BOULEVARD		



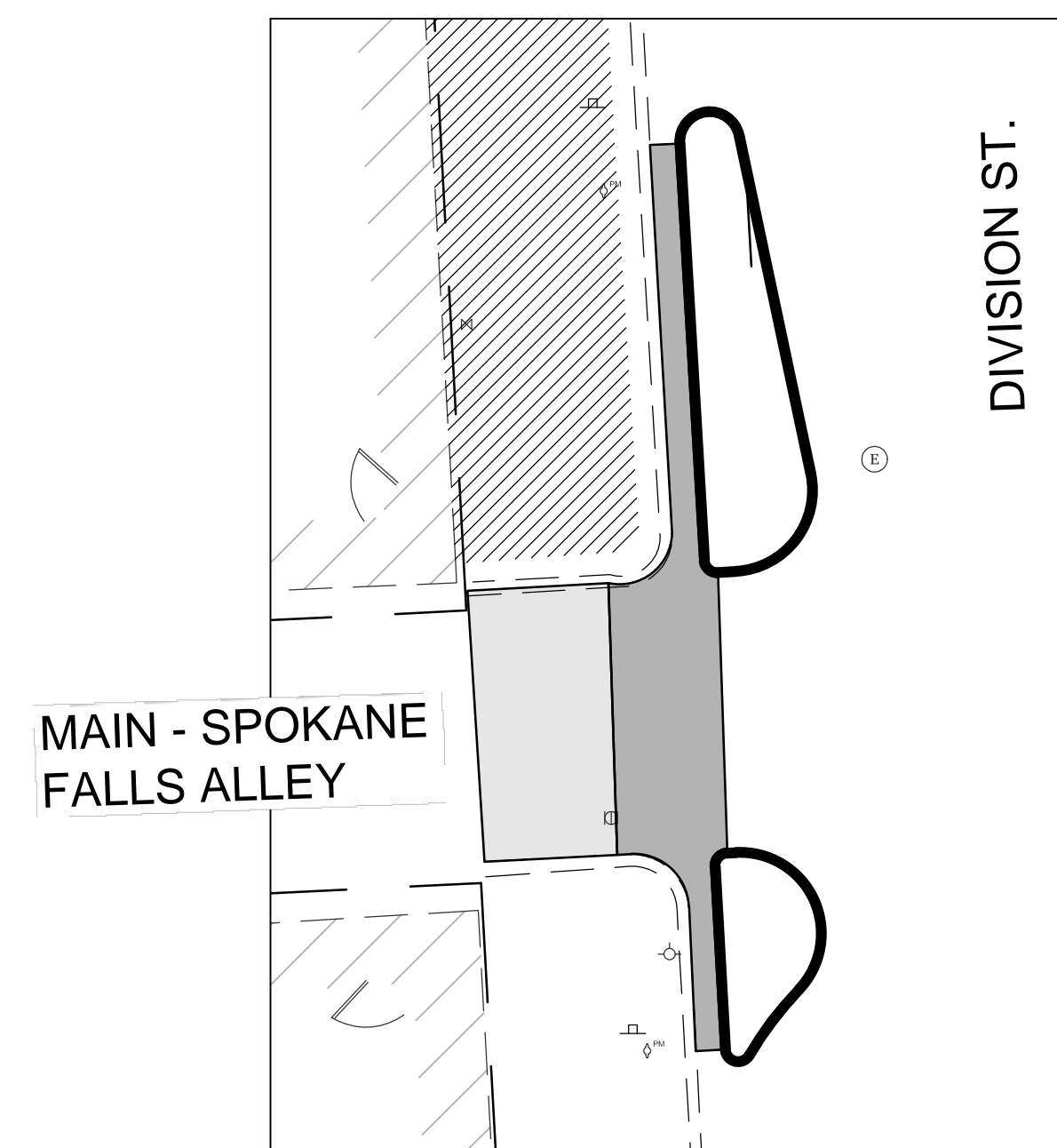
D15 DIVISION ST.-RIVERSIDE/MAIN ALLEY - WESTSIDE
R5



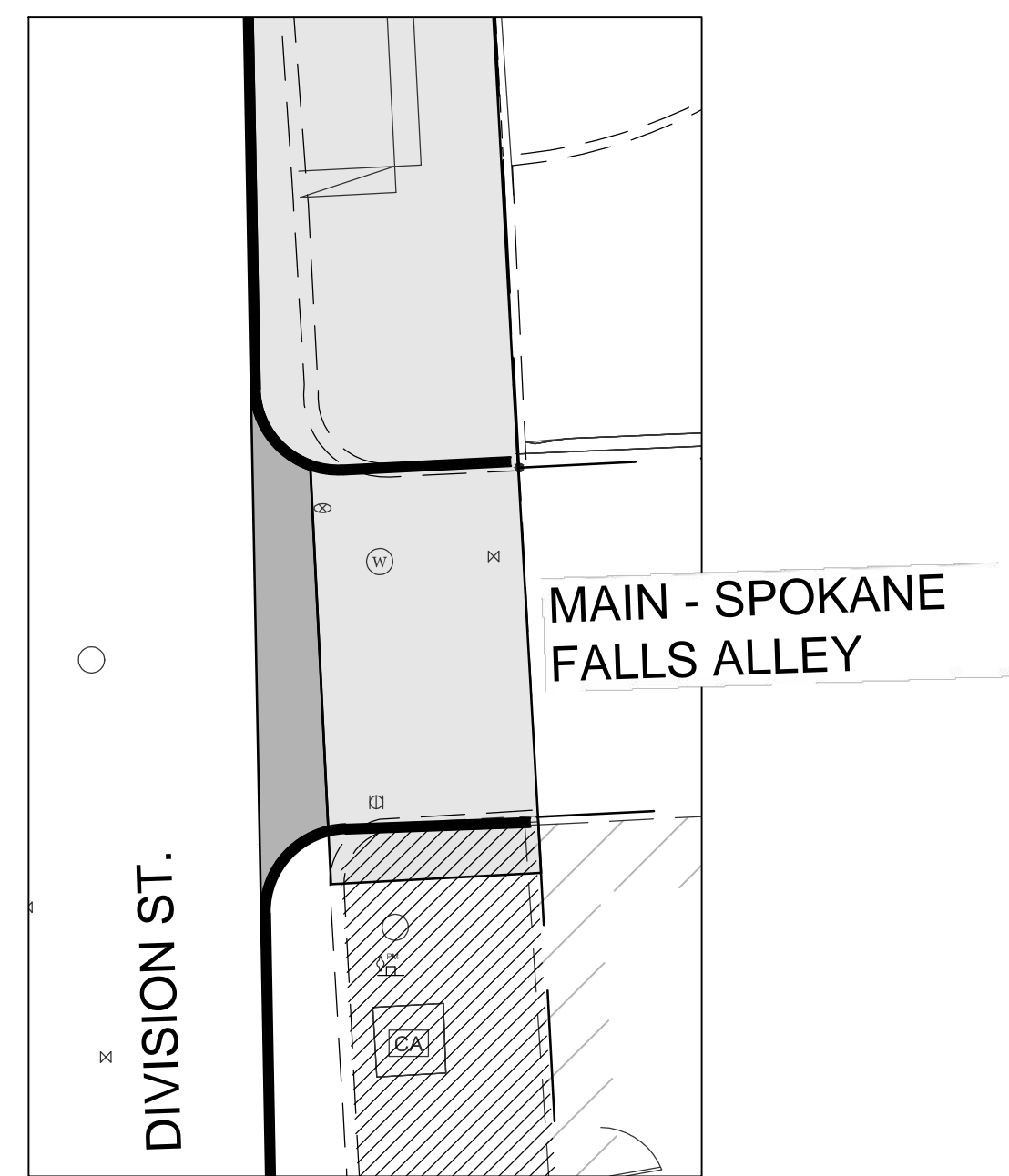
D16 DIVISION ST.-RIVERSIDE/MAIN ALLEY - EASTSIDE
R5



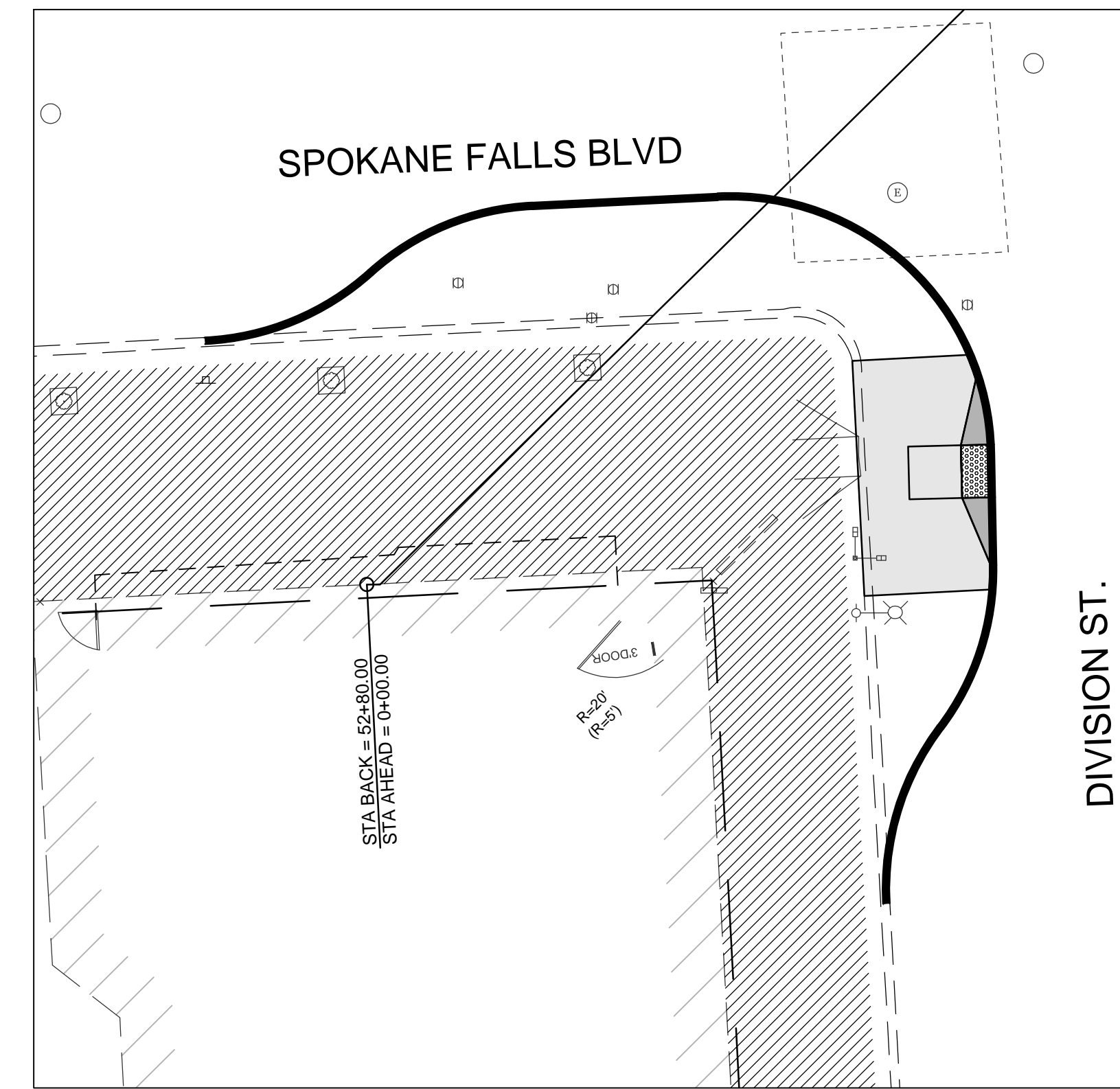
D17 DIVISION ST. & SPOKANE FALLS BLVD. - NORTHEAST
R5



D18 DIVISION ST. - MAIN/SPOKANE FALLS ALLEY - WESTSIDE
R5



D19 DIVISION ST. - MAIN/SPOKANE FALLS ALLEY - EASTSIDE
R5



D20 DIVISION ST. & SPOKANE FALLS BLVD. - SOUTHWEST
R5

Plotted On Nov 16, 2016 - 1:30pm

NAVD83 = (OLD CBM ELEV.) - (13.13) AS OF JANUARY, 2000 USE NORTH AMERICAN VERTICAL DATUM OF 1988 (NAVD88)		SE CORNER, DIVISION & SPRAGUE 15.1' EECL, 14.0' SSCL		CURRENT C.O.S. DESIGN STANDARDS ADOPTED FEB. 2007		CITY OF SPOKANE, WASHINGTON DEPARTMENT OF ENGINEERING SERVICES 808 WEST SPOKANE FALLS BLVD. SPOKANE, WASHINGTON 99201-3343 (509) 625-6700		PROJECT NAME: DIVISION GATEWAY		TYPE OF IMPROVEMENT: DETAIL	
NAVD88 ELEV. 1907.554 CBM NO. 0N 0E NAVD88 DATUM		BAR IS ONE INCH ON ORIGINAL DRAWING IF NOT ONE INCH ON THIS SHEET, ADJUST SCALES ACCORDINGLY		HORIZONTAL PLAN/PROFILE 1" = 10' VERTICAL PROFILE ONLY NA SCALE		BY DATES DRAWN: JAB 10/20/16 REVISIONS: ?? 7/?? CHECKED: RKP 11/20/16 APPROVED: RKP 11/20/16		SEGMENT LIMITS: INTERSECTION DETAILS		CITY PROJECT NUMBER: 2014149 CITY PLAN NUMBER: 19-25-43 20-25-43	
REVISIONS		AS BUILT		GRADE ORDINANCE LIST		PROJECT LIMITS: 3RD AVENUE TO SPOKANE FALLS BOULEVARD		EFN: 2014149_MA.DWG		CALL BEFORE YOU DIG 1-800-424-5555	