

# Riverton CSO 38 & 39

## Intent:

- Restore natural areas at CSO 38 & 39.
- Provide irrigation to all new plantings.
- Extend irrigation along Riverton for future community planting projects.
- Noxious weed control.

# Plant Selection

- Mulch (3 in.) will be applied at all planting locations.
- Shrubs will be blended groupings and naturally arranged.



Maple



Wild Rose

- Trees
  - Maples
  - Serviceberry
  - Choke Cherry



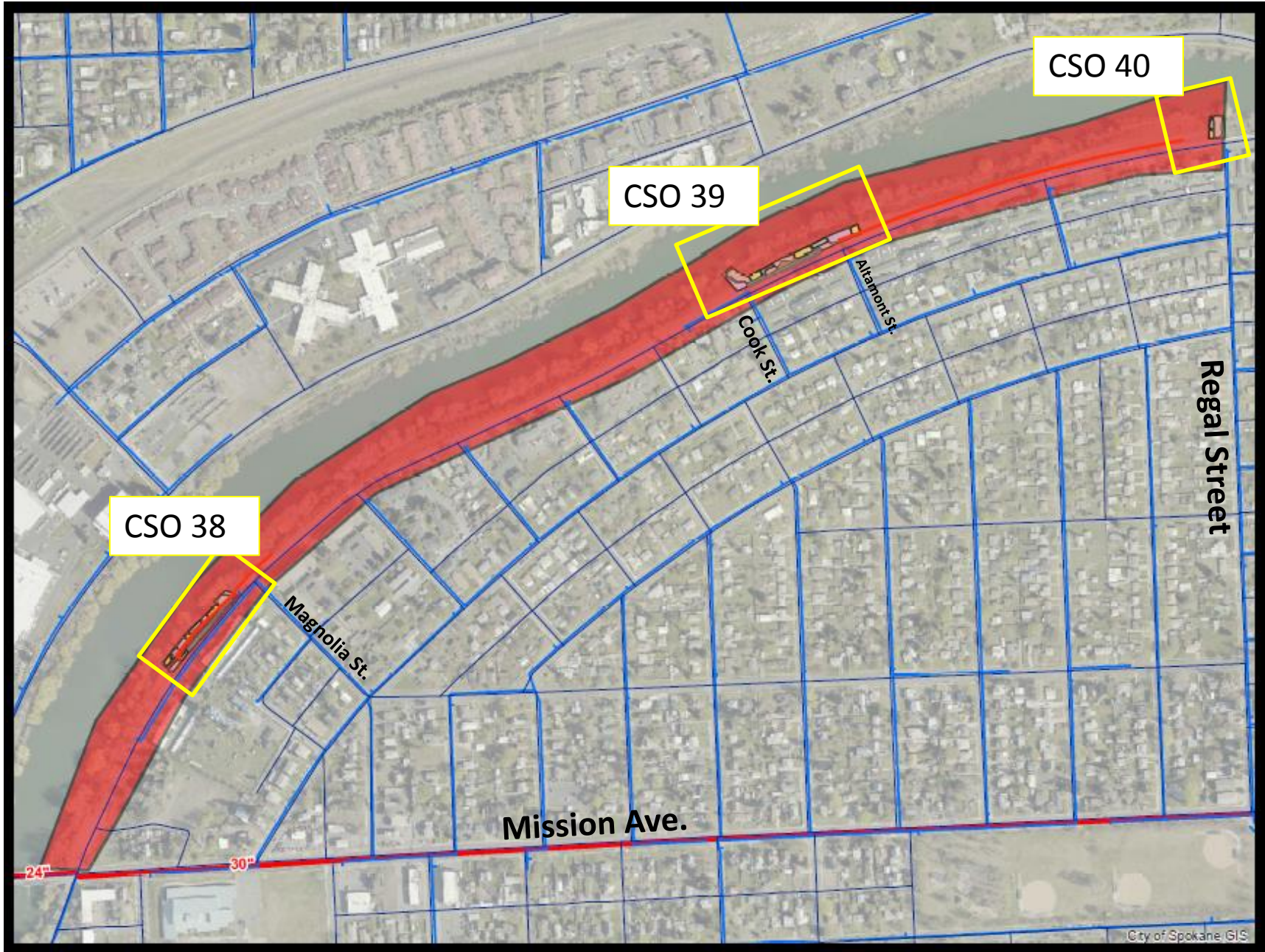
Choke Cherry

- Shrubs
  - Snowberry
  - Wild Rose
  - Mock Orange
  - Nootka Rose
  - Birch Leaf Spiraea
  - Mallow Ninebark
  - Woods rose



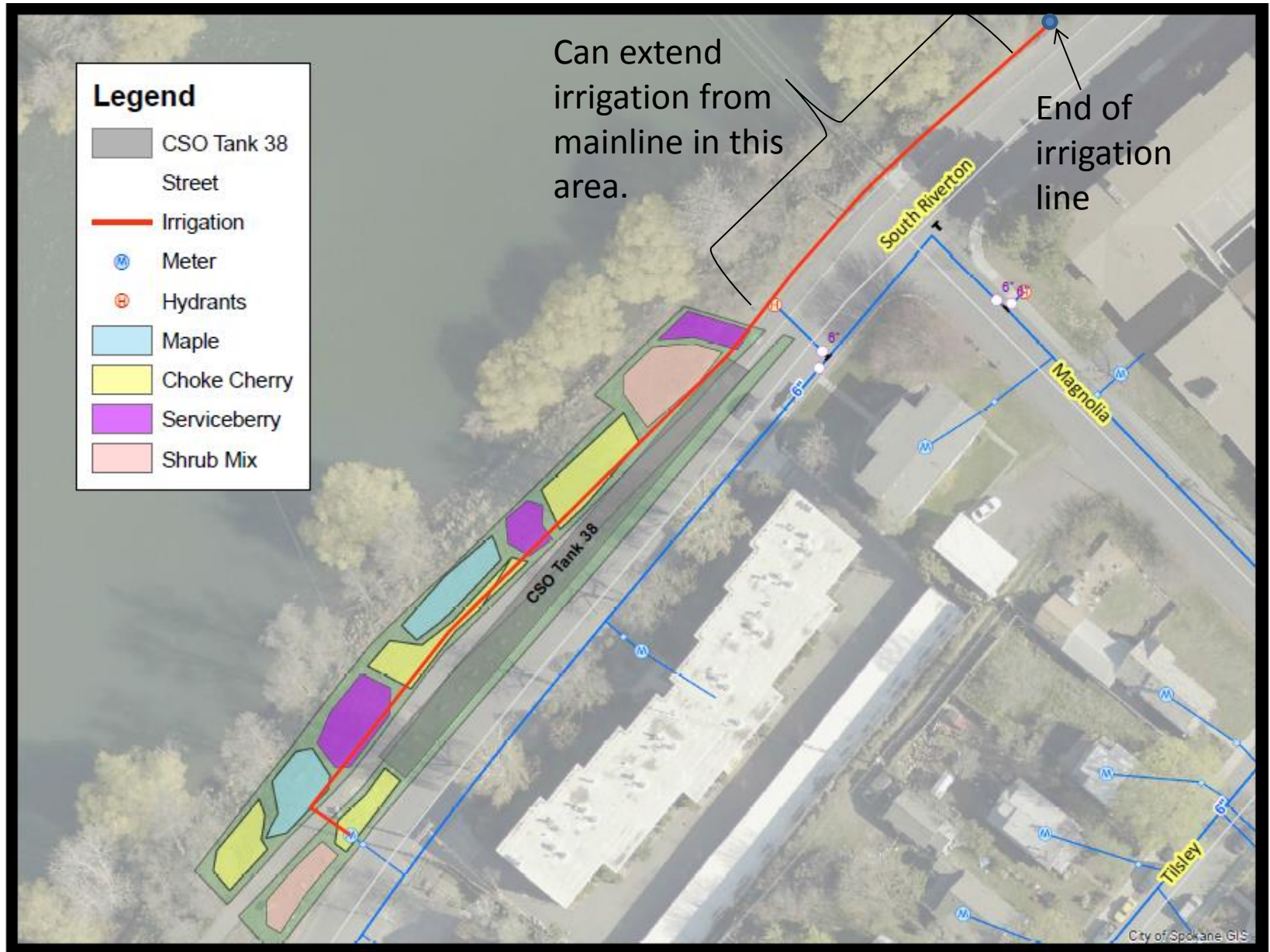
Serviceberry

# Site Overview



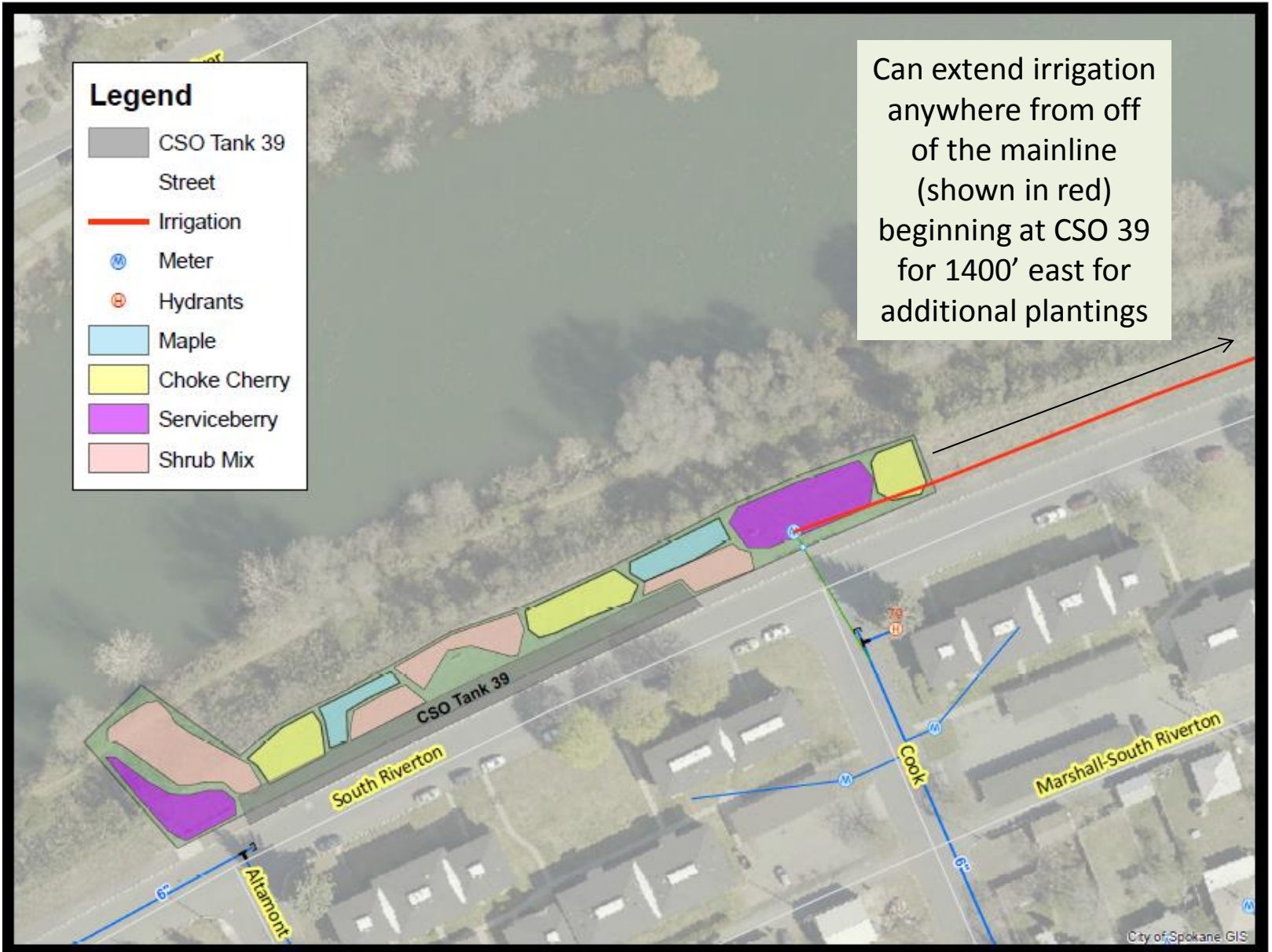
# CSO 38

S. Riverton Ave. & Magnolia St.



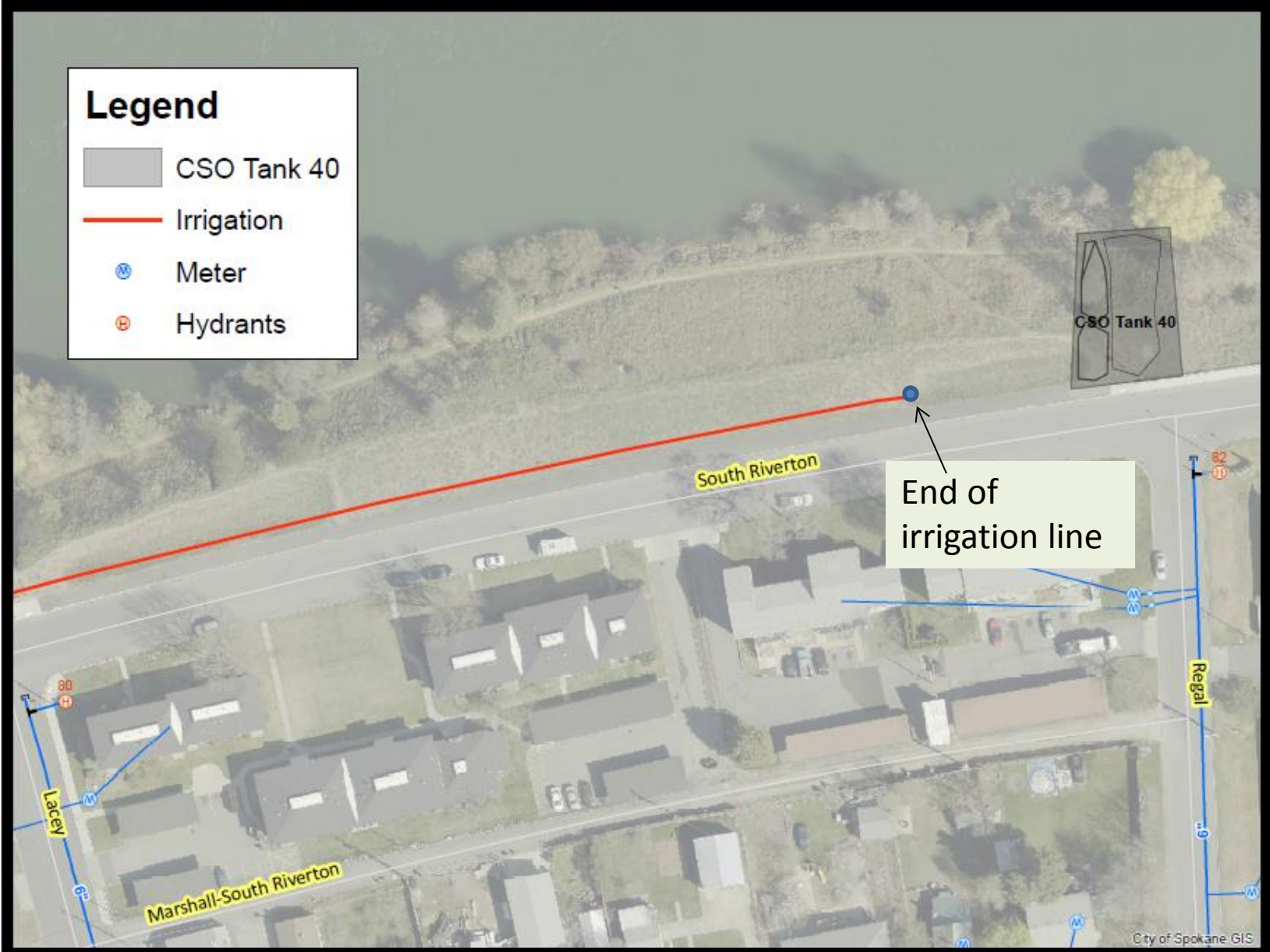
# CSO 39

Corner of S. Riverton Ave & Cook St.



# CSO 40

## Regal Street



**For questions contact:**

Office of Neighborhood Services &  
Code Enforcement

Alicia Powell

[Apowell@spokanecity.org](mailto:Apowell@spokanecity.org)

625-6780